

ACCENTRA

ASSA ABLOY

NTB600TSACC
Cylindrical Lock
Touchscreen
and Push
Button



ACCENTRA NTB600TSACC Cylindrical Lock Touchscreen and Push Button Installation Guide

[Home](#) » [ACCENTRA](#) » ACCENTRA NTB600TSACC Cylindrical Lock Touchscreen and Push Button Installation Guide 

Contents

- [1 ACCENTRA NTB600TSACC Cylindrical Lock Touchscreen and Push Button](#)
- [2 Specifications](#)
- [3 Programming Instructions](#)
- [4 Resetting Lock to Factory Default](#)
- [5 Definitions](#)
- [6 Programming Troubleshooting](#)
- [7 FAQs](#)
- [8 Documents / Resources](#)
 - [8.1 References](#)
- [9 Related Posts](#)

ACCENTRA

ASSA ABLOY

ACCENTRA NTB600TSACC Cylindrical Lock Touchscreen and Push Button



Specifications

- Product Name: Cylindrical Lock Touchscreen and Push Button
- Optional Accessories: Multi-Family Key Module, Door Position Sensor (DPS)
- Dimensions: Various sizes as per installation requirements
- Compatibility: Wood and Metal Doors
- Battery: AA batteries
- Model Number: 80-9150-0080-010
- Expiry Date: 04/2024

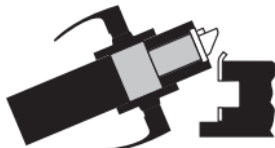
Determine Handing



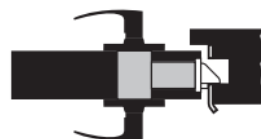
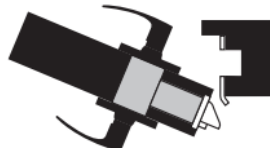
The hand of a door is determined from the secure side of the door. The term "secure" means the side from which you initially unlock and enter.



Left Hand "LH", Hinges Left,
Open Inward

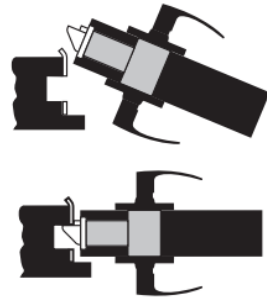


Left Hand Reverse "LHR",
Hinges Left, Open Outward

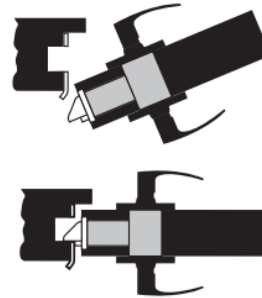




Right Hand "RH", Hinges Right,
Open Inward



Right Hand Reverse "RHR",
Hinges Right, Open Outward



Prepare Door

DPS Option

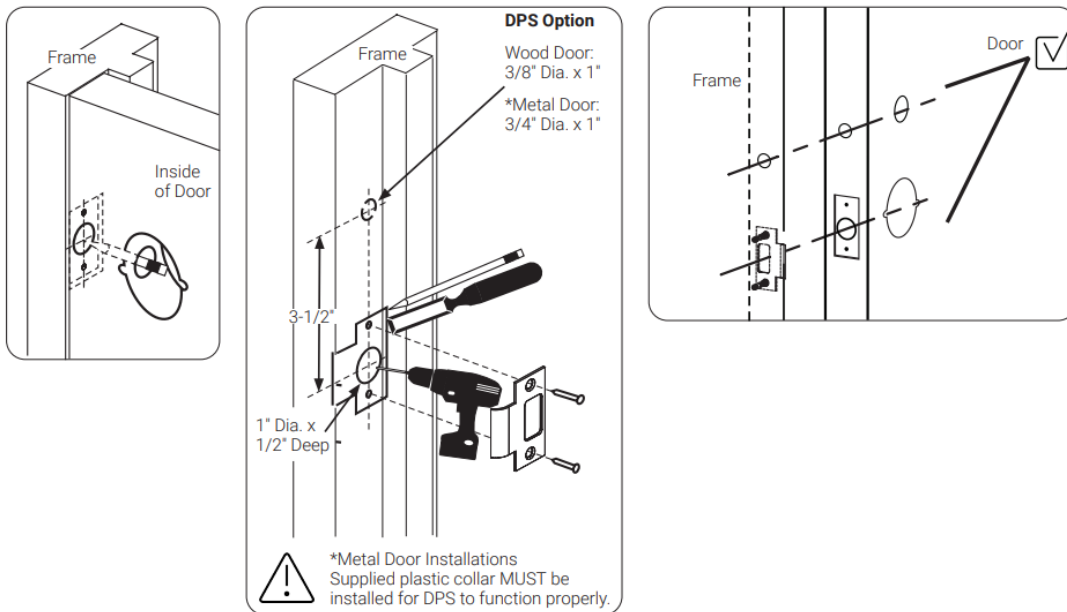
Wood Door:
3/8" Dia. Thru to
Hole in Door Face

*Metal Door:
3/4" Dia. Thru to
Hole in Door Face

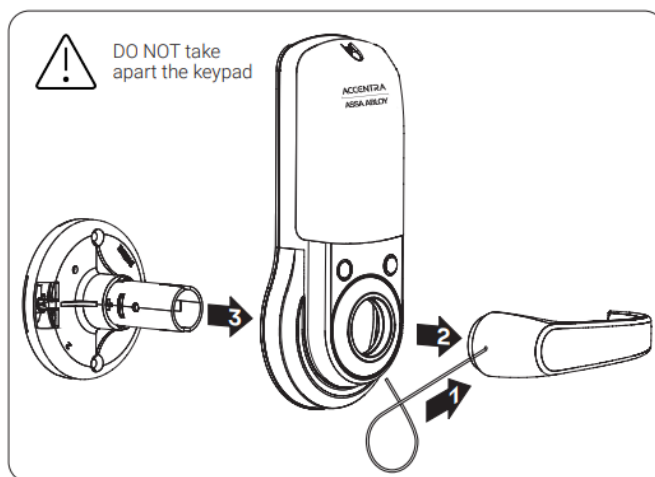
Drill holes 1/2 way thru
door then complete
from other side to
prevent splitting.

***Metal Door Installations**
Supplied plastic collar **MUST** be
installed for DPS to function properly.

Prepare Frame



Prepare Inside Lock

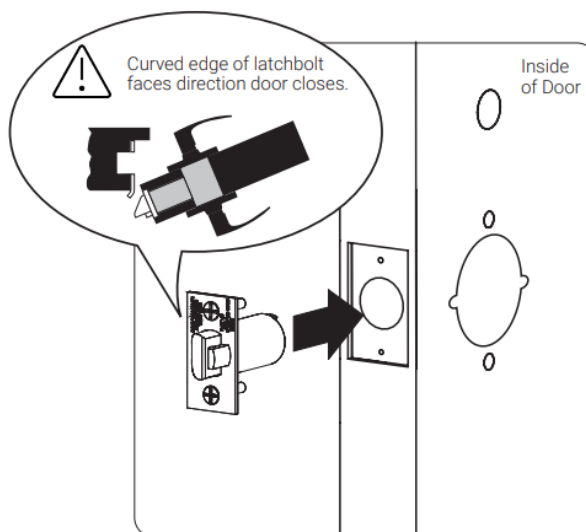


Install Latchbolt

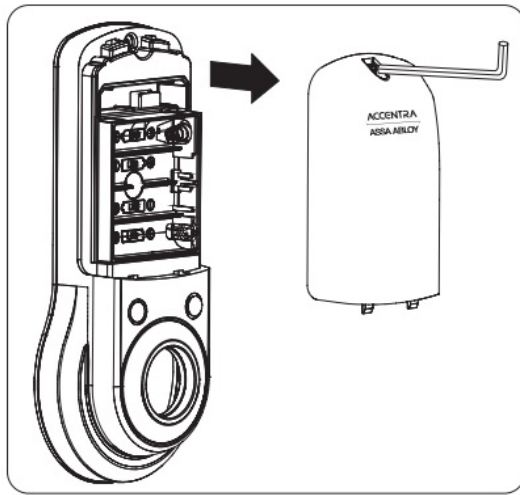
7-16 / 8-32 x 1" UNCWS



x2

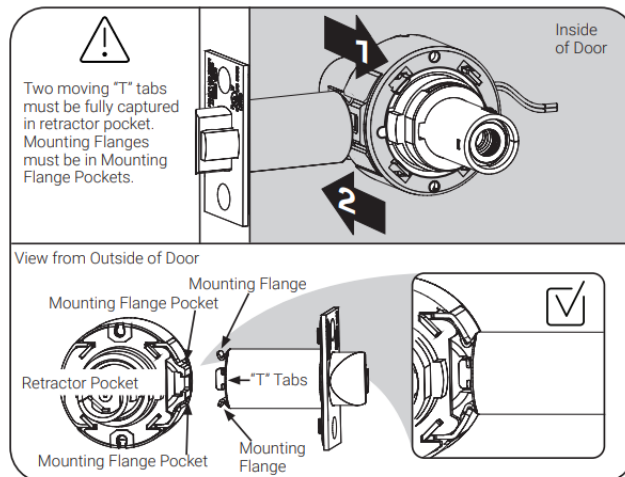
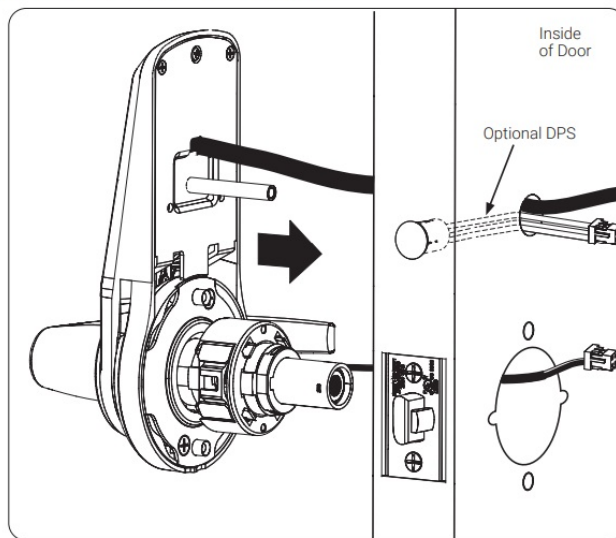


Remove Battery Cover



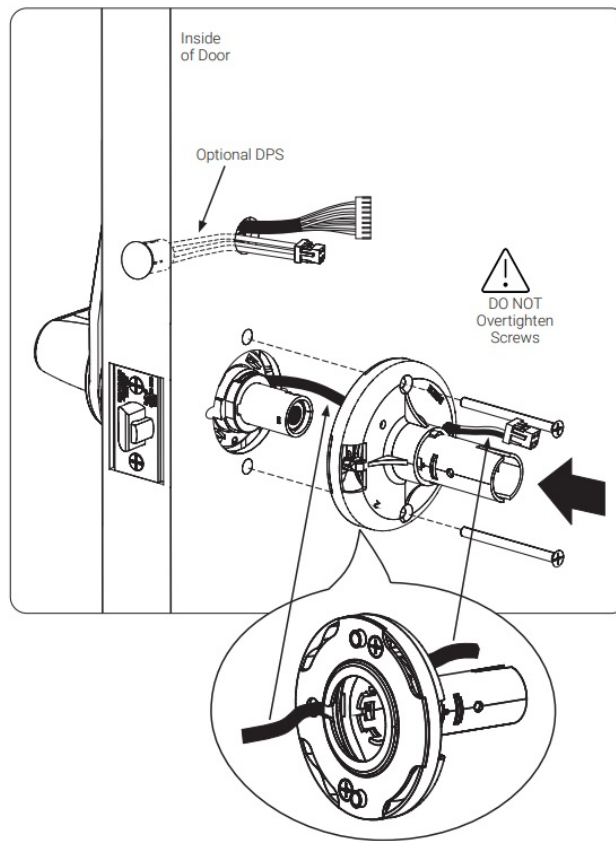
Install Keypad

Thin door gaskets sold separately. See Installation Options.

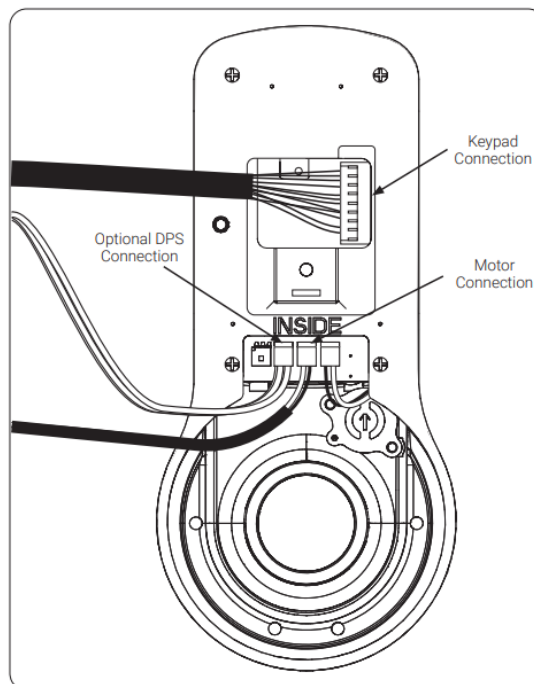


Install Inside Support

10-32 x 2-1/2" PFHMS

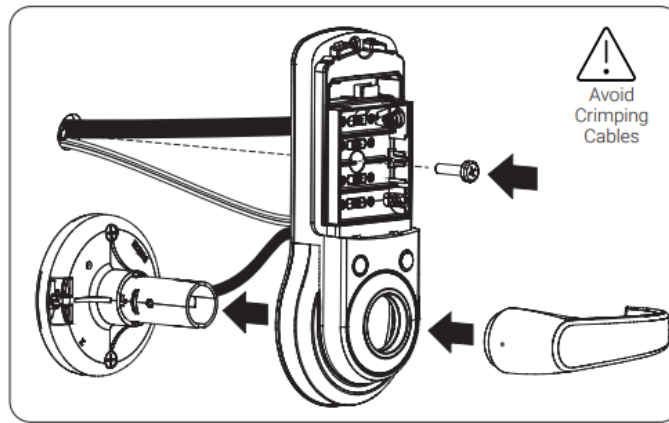


Attach Cables to the Inside Lock



Install Inside Lock

Thin door gaskets are sold separately. See Installation Options.

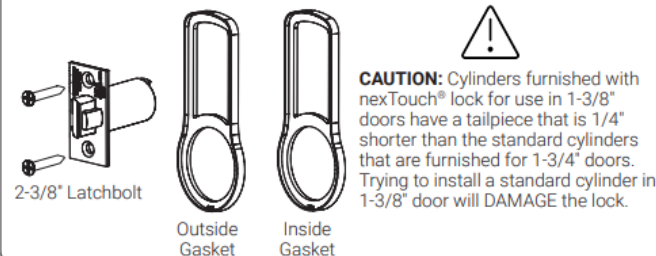


Installation Options

Install any spacers or DPS before securing the interior escutcheon to the door. Install the Multi-Family Key Module before installing batteries.

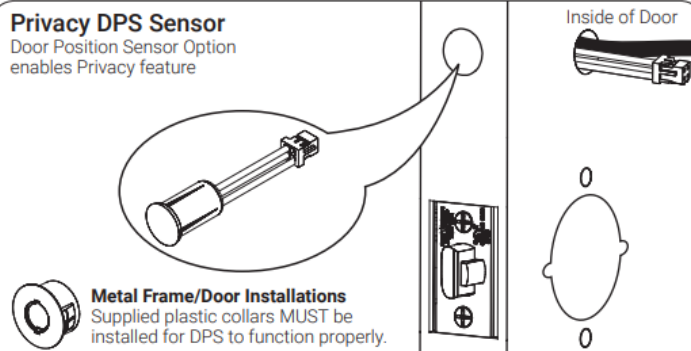
Adjusting for 1-3/8" Door (if necessary)

Order 1-3/8" Thin Door Kit: 14-4761-0106



Privacy DPS Sensor

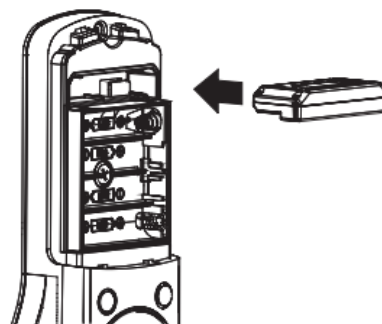
Door Position Sensor Option enables Privacy feature



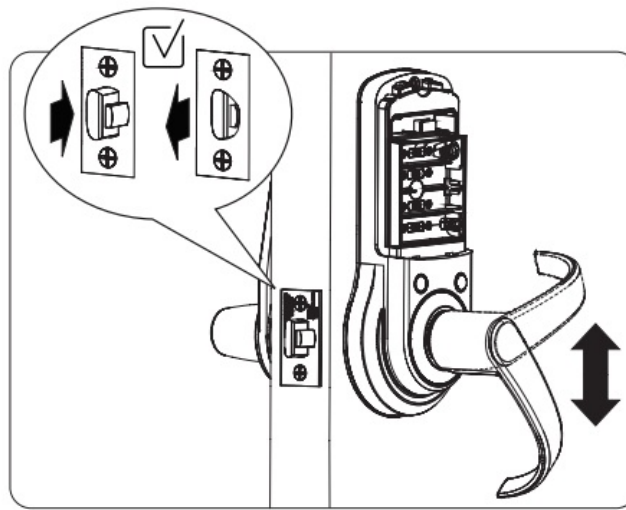
Multi-Family Key Module

Module must be installed BEFORE batteries. Remove batteries if adding module to existing unit.

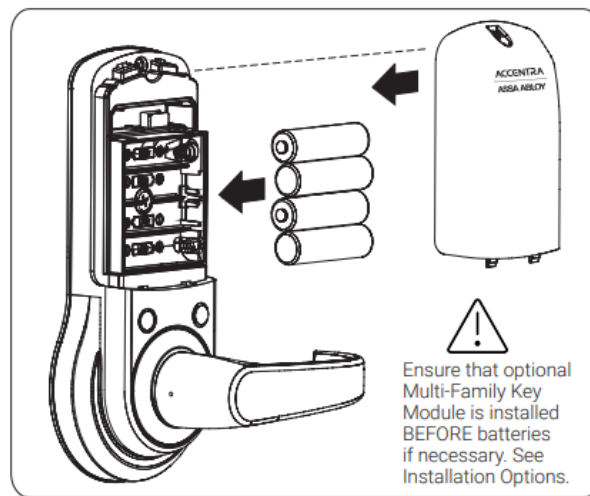
The Multi-Family Key module enables access with physical (cards and fobs) and mobile credentials ONLY. Creation and use of User PIN codes are disabled.



Test Inside Lever Operation



Install Batteries and Cover



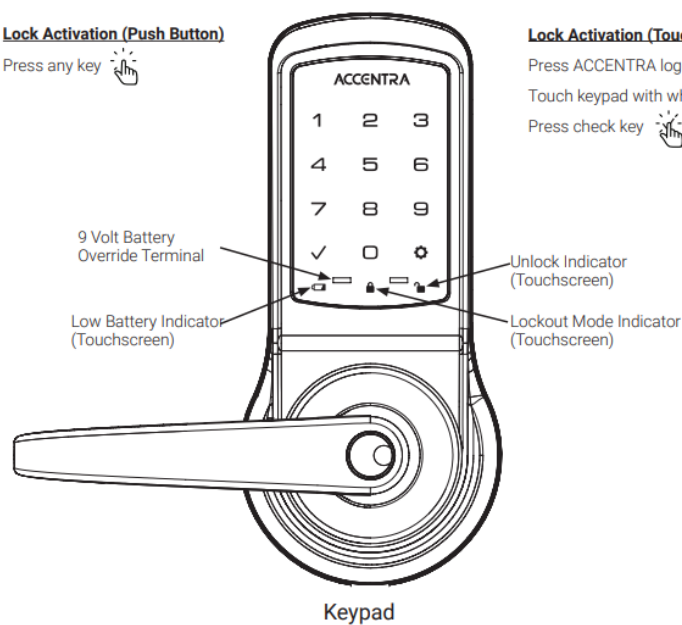
Programming Instructions

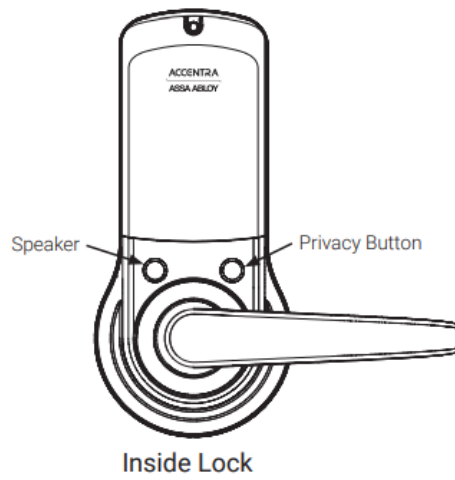
Lock Activation (Push Button)

Press any key

Lock Activation (Touchscreen)

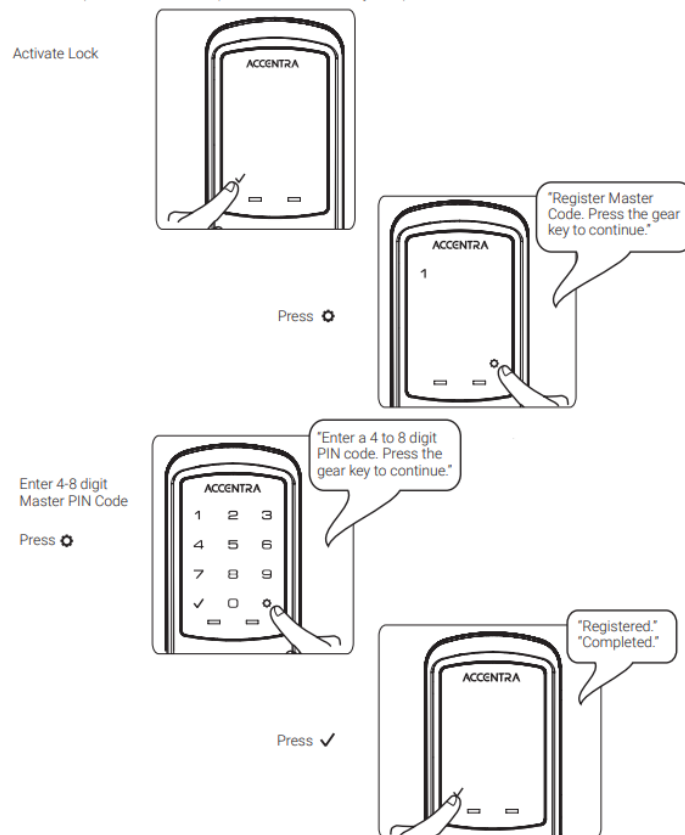
Press ACCENTRA logo
 Touch keypad with whole hand
 Press check key





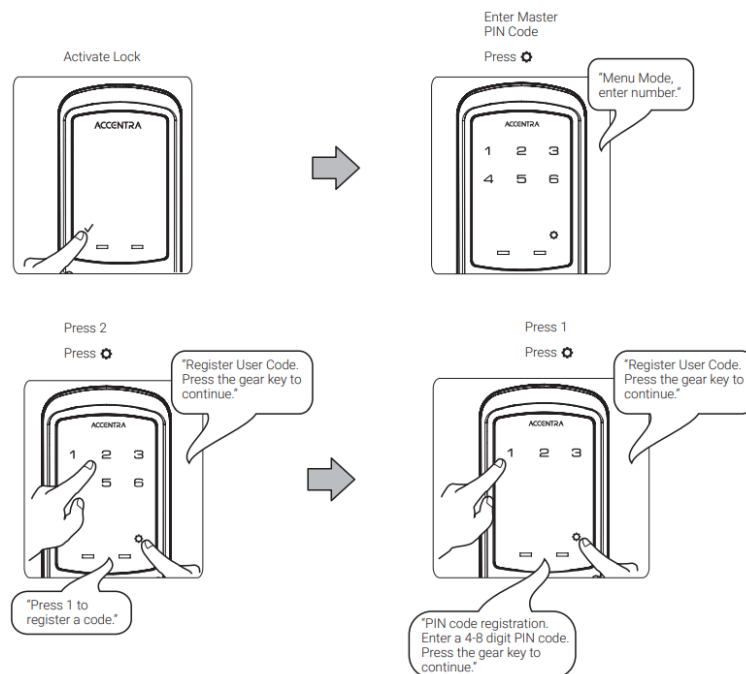
Creating a Master PIN Code

Creating a Master PIN Code must be performed upon installation or after resetting the lock to factory default. Programming and using the lock are not possible until this step has been successfully completed.

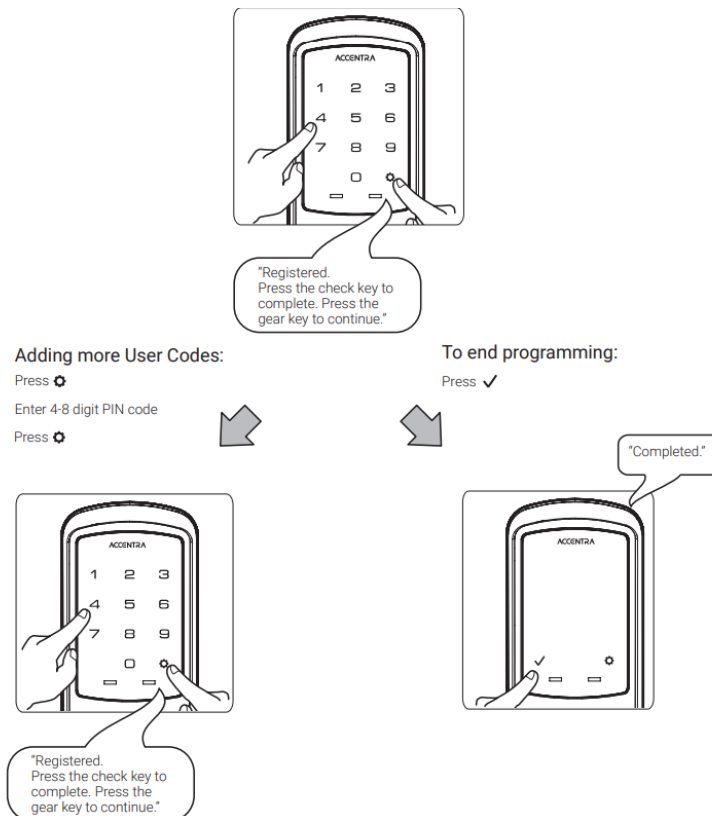


Creating User PIN Codes

A master PIN code must be created first. The Multi-Family Key module enables access with physical (cards and fobs) and mobile credentials ONLY. Creation and use of User PIN codes are disabled.



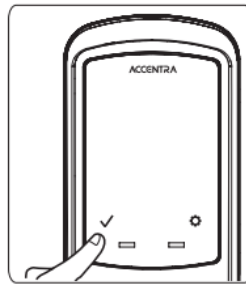
Creating User PIN Codes, continued



Locking and Unlocking Door with Registered Master or User PIN Code

The Multi-Family Key module enables access with physical (cards and fobs) and mobile credentials ONLY. Creation and use of User PIN codes are disabled. The master PIN code is only used for programming and configuring the lock with the ACCENTRA Multi-Family configuration app and will not unlock the door. When the lock is configured into the Multi-Family system, "#2" and "#6" will no longer be visible when in "Menu" mode.

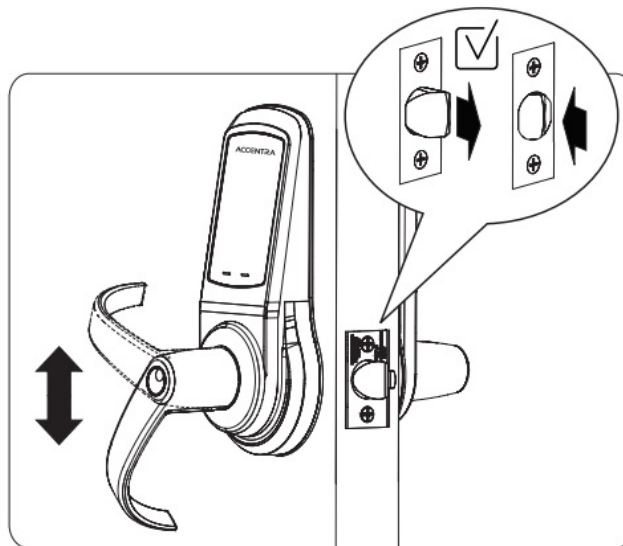
Activate Lock



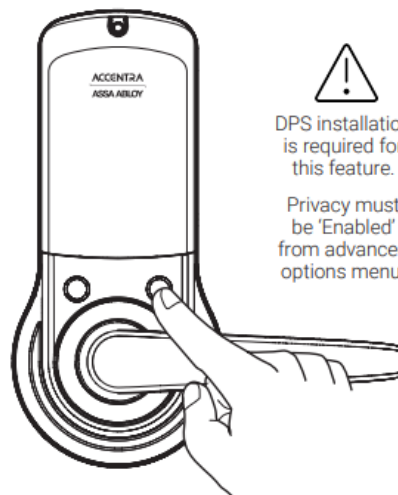
Enter PIN code
Press ✓



Testing Outside Lever Operation



Locking Door with Privacy Button

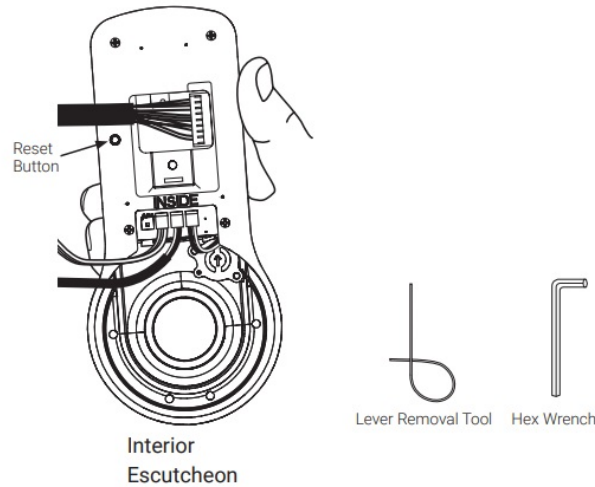


DPS installation
is required for
this feature.

Privacy must
be 'Enabled'
from advanced
options menu.

When the door is in a Locked state (door closed) press the privacy button once to activate privacy mode. When the door is not in a Locked state, press the privacy button two times. The first press puts the door in a Locked state, second time activates privacy mode.

Resetting Lock to Factory Default



When the lock is reset to factory defaults, all PIN codes, including the Master PIN code, are deleted and all programming features are reset to the original default settings (see Factory Settings).

1. Remove the inside lever with the supplied lever removal tool.
2. Remove the battery cover with the supplied hex wrench and then remove all batteries.
3. Remove the 10-32 x 3/4" pan head screw from the center of the battery housing.
4. Remove the interior escutcheon from the door to access the reset button on the back of the interior escutcheon.
Cables should stay connected (See illustration above for the location of the reset button.)
5. Reinstall three (3) AA batteries.
6. Press the reset button for 3 seconds.
7. While continuing to press the reset button, insert the remaining one (1) AA battery.
8. Release the reset button and wait approximately 15 seconds, or until the lock announces "Factory Reset Complete."
9. Reassemble the interior escutcheon and lever.

Upon reset, Master PIN Code creation is the only option available and must be performed prior to any other programming of the lock.

Definitions

All Code Lockout Mode: This feature is enabled by the Master PIN code. When enabled, it restricts all user (except Master) PIN code access. When attempting to enter a code while the unit is in Lockout, there will be an audible lock response. The touchscreen keypad will display a RED locked padlock. (Main Menu selection #6)

Automatic Re-lock Time: After a successful unlock, the unit will re-lock automatically after 3 seconds or for a duration selected in Advanced Lock Settings. (Main Menu selection #3 then #1) **Eco Mode:** When enabled, Eco Mode puts the unit in low power mode extending the life of the battery.

Language Setting Mode: Choose English (1), Spanish (2), or French (3) for the lock's voice prompts. (Main Menu selection #5)

Low Battery: When battery power is low, the Low Battery Warning indicator is a flashing red battery icon on the touchscreen keypad and the ACCENTRA logo will flash red on the push button keypad. If battery power is completely lost, use 9 9-volt battery override. To use a 9V battery override apply a 9V battery, in either direction, to terminals on the keypad for a backup power option. Activate the lock and enter your PIN code to unlock the door.

Master PIN Code: The Master PIN code is used for programming and feature settings. It must be created before programming the lock. The Master PIN code will also unlock/lock the lock except when configured to the Multi-Family system.

Network Module Setting: With the optional Multi-Family Key Module installed, this setting becomes available (Main Menu selection #0) and allows the lock to be configured into the ACCENTRA Multi-Family system.

One Touch Locking: When the unit is unlocked, activating the lock will lock the unit (during Automatic Re-lock duration or when Automatic Re-lock is disabled). When One-Touch Re-lock is not in use (disabled), any valid PIN code will re-lock the lock. (Main Menu selection #3 then #3)

Passage PIN Code: When used to unlock, the lock will remain unlocked/open. The lock cannot be locked/secured until the Passage code is entered again.

Privacy Button to Lock Door: Press this button will lock the door if the door is not locked.

Privacy Mode: With an optional Door Position Sensor installed, Privacy Mode enabled through Menu Mode and the door closed, all keypad functions can be disabled with a press of the Privacy Button. Privacy Mode is disabled by default. Enable Privacy Mode through Main Menu selection #3 then #4. With the door closed, press and hold the privacy button until the voice prompt indicates Privacy Mode enabled. Privacy Mode duration ends when the door is opened and the voice prompt indicates Privacy Mode is disabled.

Shut Down Time: The unit will shut down for sixty (60) seconds and not allow operation after the wrong code entry limit (5 attempts) has been met. When the unit is Shut down, the keypad will flash. Tamper Alert: An audible alarm sounds if attempting to forcibly remove the outside lock from the door.

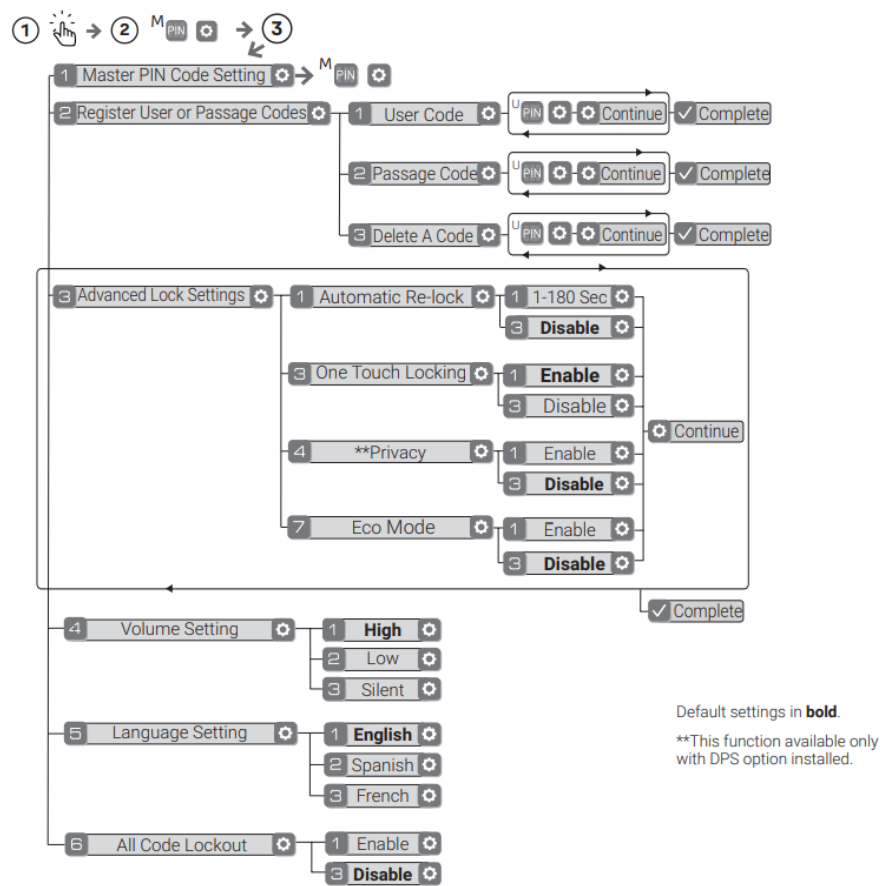
User PIN Code: The User PIN code operates the lock when the Multi-Family Key module is not installed. Maximum number of user codes is 500.

Volume Setting Mode: The volume setting for PIN code verification is set to HIGH (1) by default; otherwise it can be set to Low (2) or Silent (3) for quiet areas. (Main Menu selection #4)

Wrong Code Entry Limit: After five (5) unsuccessful attempts at entering a valid PIN code, the lock will not accept a PIN code for the duration of the shutdown time. The touchscreen keypad will flash, and a red padlock symbol will be at the bottom of the keypad. The push button keypad will flash and the ACCENTRA icon will flash blue for the shutdown period. The keypad will be available after the shutdown time is complete.

Feature Programming Through Menu Mode Using Master PIN Code

1. Activate the lock.
2. Enter 4-8 digit Master PIN code* followed by the key. Lock Response: "Menu mode, enter a number (the entered digit corresponding to the function to be performed med), press the key to continue".
3. Follow the voice commands.
4. Press the key to complete the process and conclude the programming session. *The Master PIN code must be created before any other programming of the lock.



Programming Troubleshooting

Symptom	Suggested Action
Lock does not respond. There are no lights or chimes and there is no mechanical sound indicating latchbolt movement.	<p>Touchscreen models become active by pressing ACCENTRA logo or key or by touching keypad with whole hand.</p> <ul style="list-style-type: none"> Check batteries are installed and oriented correctly (polarity). Replace batteries. Check that cables are fully connected on inside lock and not crimped. Apply 9V battery to terminals on the keypad for emergency power jump option.
Lock wakes but does not respond. Lights dim.	<ul style="list-style-type: none"> Batteries do not have enough power. Replace batteries.
Lock chimes to indicate code acceptance, but door will not open.	<ul style="list-style-type: none"> Check for another locking device on the door, i.e., deadbolt. Check the door gaps for any foreign objects between door and frame. Check that the motor cable is firmly connected into the PC board marked "MOTOR" on inside lock.
Lock operates to allow access, but will not automatically re-lock.	<ul style="list-style-type: none"> Ensure Auto Re-lock Mode is enabled by Master user. Replace batteries. Ensure Passage PIN code was not used for access.
User/Passage PIN codes will not register	<ul style="list-style-type: none"> Master user creates/manages User and Passage PIN codes. PIN codes must consist of 4 to 8 digits to register. PIN code may already be registered. Check to see if a yellow Multi-Family Key module is installed. PIN codes are disabled when the Key module is installed. PIN codes must be entered within 20 seconds (while keypad is active) or process will have to be restarted. Check ✓ or gear ⚙ cannot be used as part of the PIN code.
Upon entering a User/Passage PIN code and pressing the ✓ key, the lock chimes an error or lock times out without responding.	<ul style="list-style-type: none"> Ensure All Code Lockout Mode is disabled by Master user. Touchscreen will display a red padlock on keypad. The digits entered were incorrect or incomplete. Re-enter 4-8 digits followed by the check ✓ key. Master user may have deleted PIN code. PIN code may have expired. Check to see if a yellow Multi-Family Key module is installed. PIN codes are disabled when Key module is installed. PIN codes must be entered within 20 seconds (while keypad is active) or process will have to be restarted.
TS lock displays "Low Battery" on keypad. PB lock ACCENTRA logo flashes red.	<ul style="list-style-type: none"> This is the alert to replace the batteries. Replace all four (4) batteries with new AA alkaline batteries.
The lock operates, but it does not chime.	<ul style="list-style-type: none"> Ensure Volume is set to Low or High by Master user.
Lock will not enter Privacy Mode.	<ul style="list-style-type: none"> Ensure Privacy Mode is enabled by Master user. Ensure door gap is correct. Ensure DPS is installed.

NOTE: When batteries are replaced, Multi-Family Key module locks have a real-time clock that will be set through the Cloud Software User Interface. It is recommended to update the lock using the ACCENTRA Configuration app to verify the correct date and time, particularly for those locks operating under Daylight Saving Time (DST).

Hardware Troubleshooting

Door is binding.
a. Check that door and frame are properly aligned and door is free swinging. b. Check hinges: They should not be loose or have excessive wear on knuckles.
Latchbolt will not deadlock.
a. Either strike is out of alignment or the gap between door and jamb is too great. Realign strike or shim strike out towards flat area of latchbolt.
Latchbolt does not retract or extend properly.
Latchbolt tail and retractor are not properly positioned: a. Remove lockset. Look through 2-1/8" hole and verify latchbolt tail is centered between top and bottom of hole. b. Remove latchbolt and insert lockset. Look through latchbolt hole and verify retractor mouth is centered in hole. If not, adjust outside rose plate. c. If necessary, rebore holes to line up retractor and tail.

Factory Settings

Settings	Factory Setting
Master PIN Code	Creation required*
All Code Lockout Mode	Disabled
Automatic Relock	3 Seconds
Language	English**
One Touch Locking	Enabled
Privacy Setting	Disabled
Shutdown Time	60 Seconds
Wrong Code Entry Limit	5 Times
Volume Setting	High

FCC:

This equipment has been tested and found to comply with the limits for a Class B digital device, under Part 15 of the FCC Rules. These limits are designed to protect reasonably against harmful interference in a residential installation. This equipment generates, uses, and can radiate radio frequency energy and, if not installed and used by the instructions, may cause harmful interference to radio communications. However, there is no guarantee that interference will not occur in a particular installation. If this equipment does cause harmful interference to radio or television reception, which can be determined by turning the equipment off and on, the user is encouraged to try to correct the interference by one or more of the following measures: Reorient or relocate the receiving antenna. Increase the separation between the equipment and the receiver. Connect the equipment to an outlet on a circuit different from that to which the receiver is connected. Consult the dealer or an experienced radio/TV technician for help.

Contact Us

U.S.A.

ASSA ABLOY ACCENTRA

Address: 225 Episcopal Road Berlin, CT 06037-4004

Tel: 1-[800-438-1951](tel:8004381951)

Fax: 1-[800-338-0965](tel:8003380965)

accentra-assaabloy.com

Canada:

ASSA ABLOY Door Security Solutions Canada

Address: 160 Four Valley Drive Vaughan, Ontario L4K 4T9

Tel: 1-[800-461-3007](tel:8004613007)

Fax: 1-[800-461-8989](tel:8004618989)

assaabloydss.ca

International:

ASSA ABLOY Americas International

Tel: 1-[905-821-7775](tel:9058217775)

Fax: 1-[905-821-1429](tel:9058211429)

assaabloyai.com

Phone 1-[800-810-9473](tel:8008109473)

Customer Service Email: customerservice.accentra@assaabloy.com

Technical Product Support Email: techsupport.accentra@assaabloy.com

Order Entry Email: orders.accentra@assaabloy.com

Fax: 1-[800-338-0965](tel:8003380965)

Website : www.accentra-assaabloy.com

FAQs

Q: Can I retrofit or modify the product?

A: Retrofitting or modifying the product may impact fire rating, safety features, and warranty. Consult with code specifications to ensure compliance with all codes and ratings.

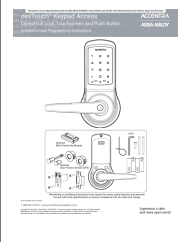
Q: How do I determine the handling of the door?

A: The hand of a door is determined from the secure side of the door. Follow the provided guidelines for left-hand, right-hand, hinges direction, and inward or outward opening.




Q: What batteries does the product use?

A: The product uses AA batteries for operation.

Documents / Resources

	<p>ACCENTRA NTB600TSACC Cylindrical Lock Touchscreen and Push Button [pdf] Installation Guide</p> <p>NTB600PBACC, NTB600TSACC, NTB600TSACC Cylindrical Lock Touchscreen and Push Button, NTB600TSACC, Cylindrical Lock Touchscreen and Push Button, Lock Touchscreen and Push Button, Touchscreen and Push Button, Push Button, Button</p>
---	--

References

-  [Home | ASSA ABLOY ACCENTRA™, formerly Yale Commercial Locks | ASSA ABLOY ACCENTRA™, formerly Yale Commercial](#)
-  [Patents | ASSA ABLOY DSS](#)
-  [P65warnings.ca.gov](#)
- [User Manual](#)

[Manuals+](#), [Privacy Policy](#)

This website is an independent publication and is neither affiliated with nor endorsed by any of the trademark owners. The "Bluetooth®" word mark and logos are registered trademarks owned by Bluetooth SIG, Inc. The "Wi-Fi®" word mark and logos are registered trademarks owned by the Wi-Fi Alliance. Any use of these marks on this website does not imply any affiliation with or endorsement.