



Driver-Less USB Docking Station User Manual

[Home](#) » [Accell](#) » Driver-Less USB Docking Station User Manual 

Contents

[1 Driver-Less USB Docking Station User Manual](#)

- [1.1 Package Contents](#)
- [1.2 Product Overview](#)
- [1.3 Connect to Computer](#)
- [1.4 Connect to Android Smartphone](#)
- [1.5 Customer support](#)
- [2 Related Posts](#)

Driver-Less USB Docking Station User Manual



P/N: K31G2-001B

Package Contents

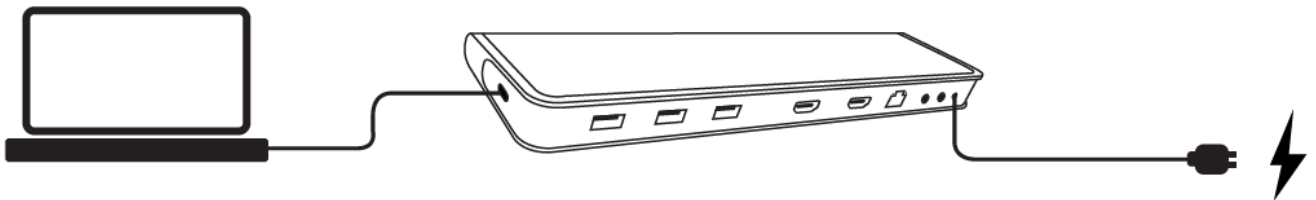
- Driver-Less USB Docking Station
- USB 3.1 Gen2 type-A to C cable
- USB 3.1 Gen2 type-C to C cable
- DC 5V/3A Int'l power supply kit [Type A, C, G]
- User manual

Product Overview

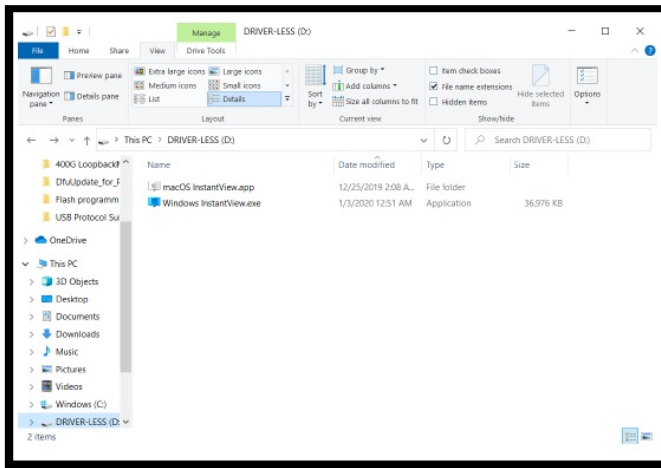


Connect to Computer

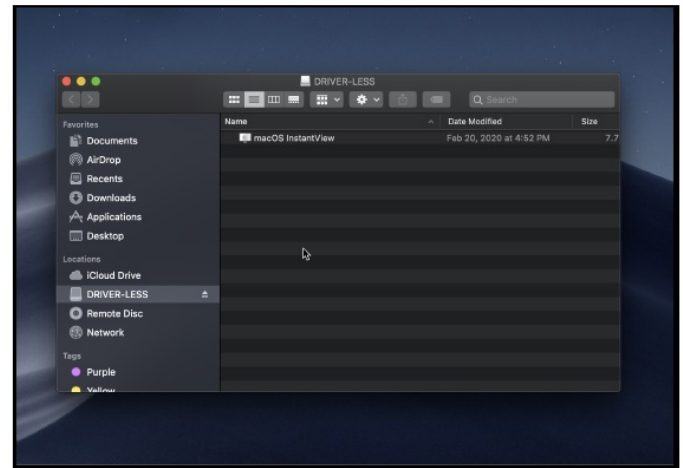
1. Connect the docking station to a computer with the included USB-C cable and connect the dock to power with the included power supply. All ports are active and up to two monitors can be connected with HDMI cables to the dock.



2. Open the Driver-Less InstantView folder that automatically loaded on your desktop, select and run the exe file matching to your operating system. After the first use, Driver-Less InstantView will load automatically.



MS Windows



macOS

Compatible with Windows 8, 8.1, 10 32-bit/64-bit, macOS 10.10 and newer.

3. Driver-Less InstantView will instantly enable the external displays and start in mirror mode. The status bar at the bottom of the screen will indicate when the dock and devices are not properly connected.

Accell Driver-Less USB Docking Station

USB 3.1 Gen 2 • 10Gbps Speed • 4K HDMI
Dual Display • 3.5mm Headphone/Microphone Jacks



Connect
Disconnect

Extended Display | Optional Driver Installation



©2020 Accell Corporation, Fremont, CA, USA
www.accellww.com

v1.0 R16



4. Extended Mode can be enabled for Windows / Mac by installing additional drivers from the Driver-Less InstantView Interface.

Accell Driver-Less USB Docking Station

USB 3.1 Gen 2 • 10Gbps Speed • 4K HDMI
Dual Display • 3.5mm Headphone/Microphone Jacks



Connect

Disconnect

Extended Display | Optional Driver Installation

ACCCELL
GET CONNECTED

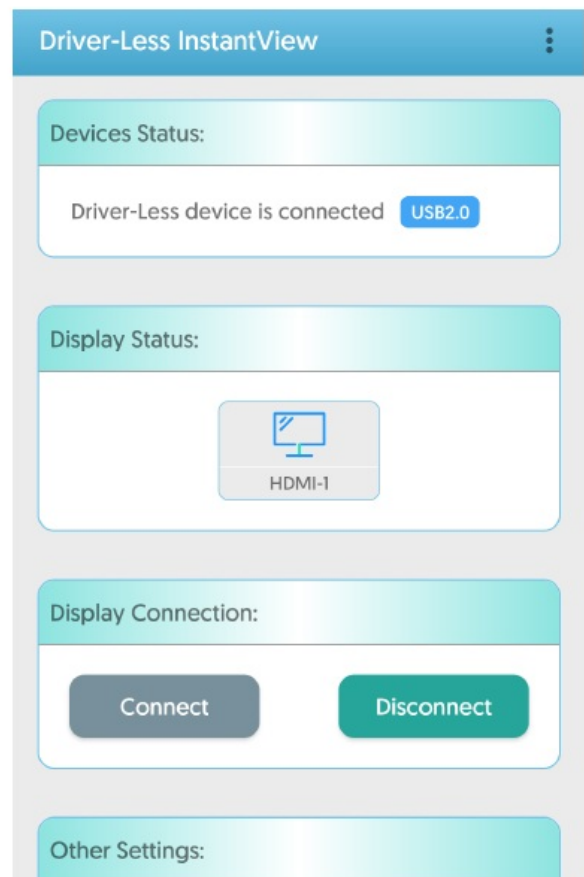
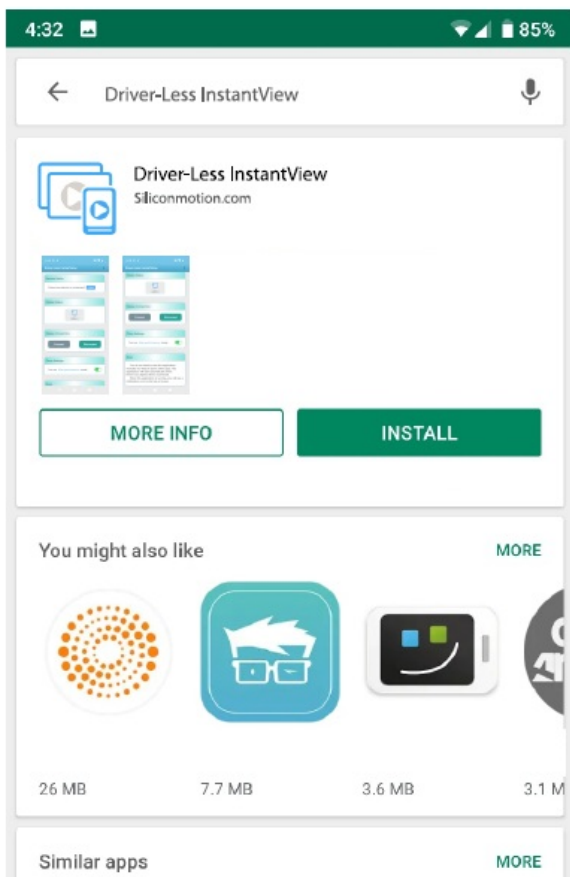
©2020 Accell Corporation, Fremont, CA, USA
www.accellww.com

v1.0 R16



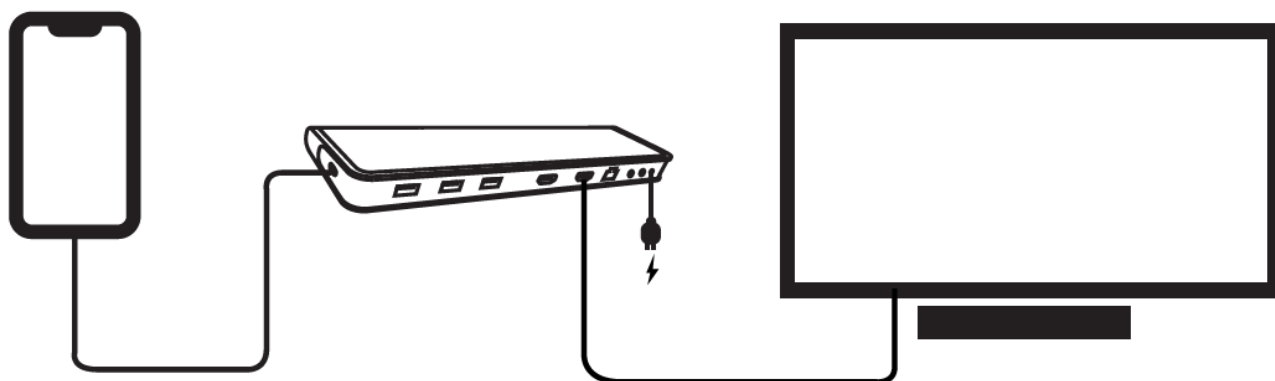
Connect to Android Smartphone

1. Download the “Driver-Less InstantView” App from Google Play Store.



2. Connect the dock to your smartphone and launch the Driver-Less InstantView App. The connected external monitor[s] will be enabled, ready for screen sharing and presentation.

**Android
Smartphone**



Compatible with Android 7.1, 8.x and 9.0

Known compatible devices: Google Pixel 2, 3, 4, SAMSUNG Galaxy S70+, S70, S9, S8, A20s
Motorola G7, Huawei Honor 8x, Mate10, Honor V10, 9x, 8x, OPPO R15, VIVO X20 A. Xiaomi M18

Customer support

If you have questions, please visit our website at **www.accellww.com/accell-driver-less-dock**

Or contact us directly by email at **support@accellww.com**

Or call toll free number **1-877-353-0772** [Monday – Friday 9am – 5pm PST]

Driver-Less USB Docking Station User Manual – [Optimized PDF](#)

Driver-Less USB Docking Station User Manual – [Original PDF](#)