

accelerated 6300-LX USB Router



accelerated 6300-LX USB Router User Guide

[Home](#) » [accelerated](#) » accelerated 6300-LX USB Router User Guide 

Contents

- [1 accelerated 6300-LX USB Router](#)
- [2 Specifications](#)
- [3 Welcome](#)
- [4 PACKAGE CONTENTS](#)
- [5 FAQ](#)
- [6 Documents / Resources](#)
 - [6.1 References](#)
- [7 Related Posts](#)



accelerated 6300-LX USB Router



Specifications

- **Model:** 6300-LX
- **Type:** USB Router

Welcome

Thank you for purchasing the Accelerated 6300-LX USB Router. Before beginning your setup, please familiarize yourself with the package contents and download and review the 6300-LX User's Guide at Accelerated.com/6300-LX/guide.

For more Product Documentation and Support information, visit: Accelerated.com/6300-LX/doc and Accelerated.com/6300-LX/support.

CAUTION: If flashing red/yellow, do not remove power.

Package Contents of the 6300-LX

If the contents are incomplete, please contact us at: Support@Accelerated.com

1. 6300-LX Unit
2. Power Supply Unit
3. Temporary Battery Pack

4. Ethernet Cable
5. Passive Power over Ethernet (PoE) Injector Cable
6. Mounting Bracket
7. 4 Ceiling Rail Clips; 2 Screws & Drywall Anchors
 - 2 Narrow clips
 - 2 Screws
 - 2 Wide clips
 - 2 Drywall Anchors
8. Velcro Strip
9. 2 Zip Ties

Welcome

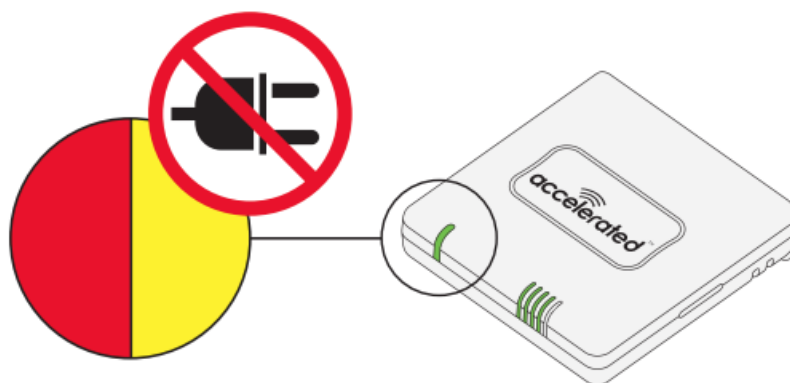
Thank you for purchasing the Accelerated 6300-LX USB Router. Before beginning your setup please familiarize yourself with the package contents (see reverse side) and download and review the 6300-LX User's Guide at Accelerated.com/6300-LX/guide.

For more Product Documentation and Support information visit:

- Accelerated.com/6300-LX/doc
- Accelerated.com/6300-LX/support

CAUTION

- IF FLASHING RED/YELLOW
- DO NOT REMOVE POWER

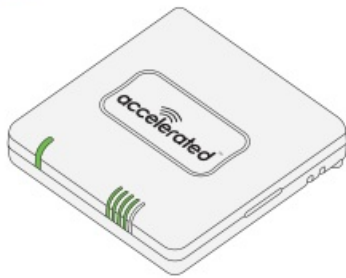


PACKAGE CONTENTS

PACKAGE CONTENTS OF THE 6300-LX

If the contents are incomplete contact us at: Support@Accelerated.com

1 6300-LX Unit



2 Power Supply Unit



3 Temporary Battery Pack



4 Ethernet Cable



5 Passive Power over Ethernet (PoE) Injector Cable



6 Mounting Bracket



7 4 Ceiling Rail Clips;
2 Screws & Drywall Anchors



2 Screws



2 Drywall Anchors



8 Velcro Strip



9 2 Zip Ties



FAQ

• **Q: What should I do if the router's LED is flashing red or yellow?**

- A: If the LED on the router is flashing red or yellow, do not remove the power. Please refer to the troubleshooting section in the 6300-LX User's Guide for further assistance.

©2016 Accelerated Concepts, Inc. All Rights Reserved.

ACCELERATED.COM

Documents / Resources

The cover of the user guide for the Accelerated 6300-LX USB Router. It features the 'accelerated' logo, the model number '6300-LX', and the text 'USB Router'. There is a 'Welcome' section and a 'CAUTION' section with a warning icon.	<p>accelerated 6300-LX USB Router [pdf] User Guide 6300-LX USB Router, 6300-LX, USB Router, Router</p>
--	--

References

-  [Accelerated | Digi International](#)
-  [Manual-Hub.com - Free PDF manuals!](#)
- [User Manual](#)

Manuals+, Privacy Policy

This website is an independent publication and is neither affiliated with nor endorsed by any of the trademark owners. The "Bluetooth®" word mark and logos are registered trademarks owned by Bluetooth SIG, Inc. The "Wi-Fi®" word mark and logos are registered trademarks owned by the Wi-Fi Alliance. Any use of these marks on this website does not imply any affiliation with or endorsement.