



ACASIS AC-M03 M.2 NVMe Enclosure and Duplicator Instructions

[Home](#) » [ACASIS](#) » ACASIS AC-M03 M.2 NVMe Enclosure and Duplicator Instructions 

Contents

- [1 ACASIS AC-M03 M.2 NVMe Enclosure and Duplicator Instructions](#)
- [2 INTRODUCTION](#)
- [3 SPECIFICATIONS](#)
- [4 Connecting steps](#)
- [5 ASSEMBLY INSTRUCTIONS](#)
- [6 Documents / Resources](#)
 - [6.1 References](#)



ACASIS AC-M03 M.2 NVMe Enclosure and Duplicator Instructions



INTRODUCTION

The ACASIS AC-M03 M.2 NVMe Enclosure and Duplicator is a versatile and high-performance storage solution designed to meet the demands of modern data storage and transfer needs. This innovative device allows you to harness the power of NVMe SSDs (Non-Volatile Memory Express Solid State Drives) by providing an enclosure that not only protects your valuable data but also facilitates seamless data duplication. Whether you are a professional looking for efficient data management or an enthusiast seeking lightning-fast storage solutions, the ACASIS AC-M03 offers a compact and user-friendly solution.

In this comprehensive set of instructions, we will guide you through the setup, installation, and operation of the ACASIS AC-M03 M.2 NVMe Enclosure and Duplicator. We'll cover topics such as hardware assembly, device connectivity, data duplication procedures, and troubleshooting tips. By the end of this guide, you will have the knowledge and confidence to maximize the potential of your AC-M03 enclosure, ensuring efficient data storage, backup, and transfer operations.

Let's embark on this journey together to unlock the full capabilities of your ACASIS AC-M03 M.2 NVMe Enclosure and Duplicator, allowing you to experience the benefits of high-speed, reliable storage solutions for your personal or professional needs.

SPECIFICATIONS

- Model Number: M03
- Material: Aluminum alloy
- Transmission Speed: 10Gbps(Theoretical speed)
- Compatibility: M Key & (M+B) Key
- USB Interface: USB3.2 Gen2
- Compatible Systems: Windows/Mac/Linux

Connecting steps

1. Connecting steps.
2. Before cloning, disconnect the USB cable from the device. Plug the source M2. ...
3. Connect the power adapter to the enclosure 2. Press the power button. ...
4. The LED indicators show the cloning process from 25%,50%,75% and 100%. When all four LEDs stop flashing, the cloning is finished.

ASSEMBLY INSTRUCTIONS

AC-M03 M.2 NVMe Enclosure & Duplicator Offline Cloning Instructions

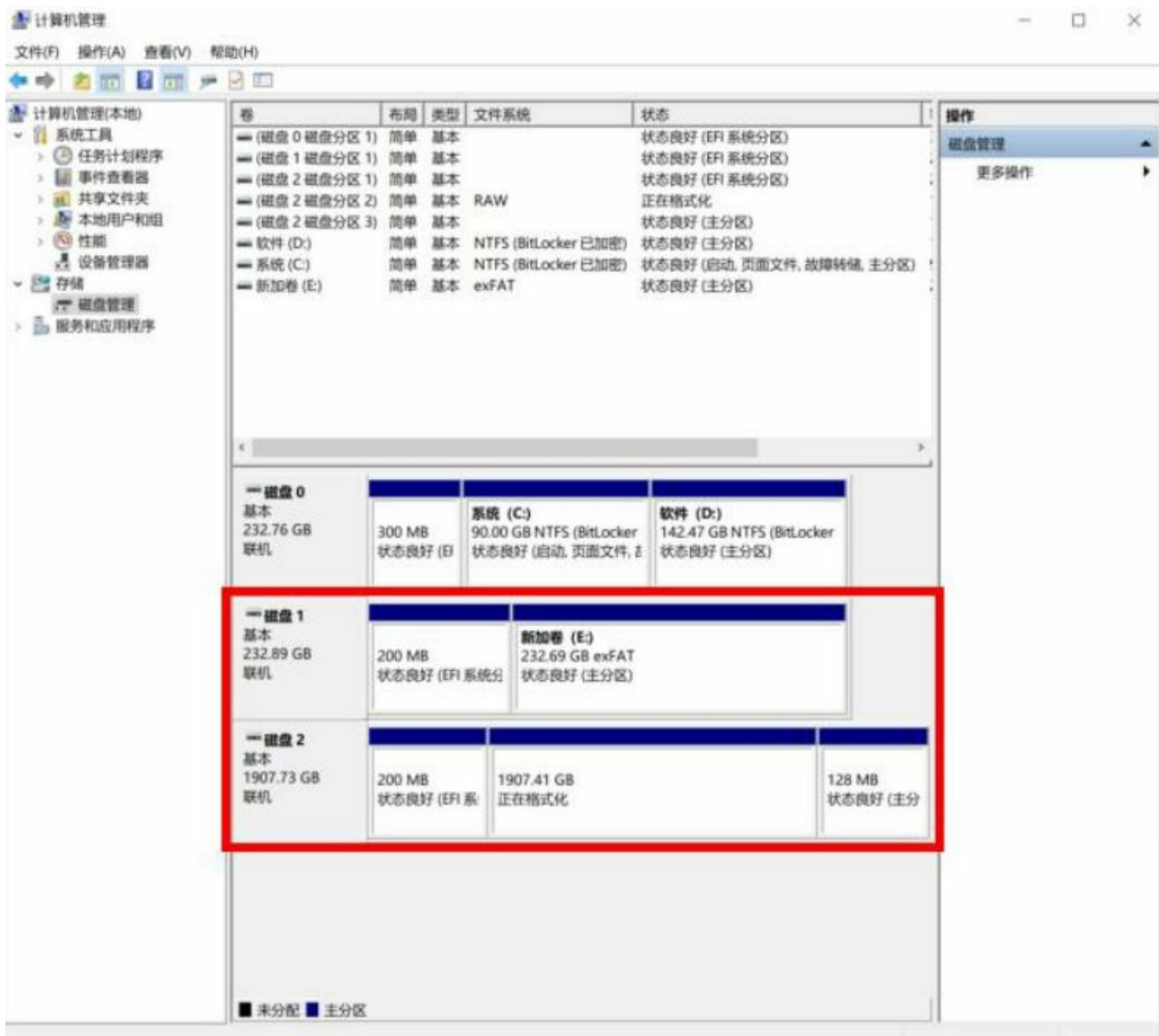
Step 1:

Insert the source SSD into slot A and the target SSD into slot B (the target SSD must have larger capacity than source SSD), as shown below:



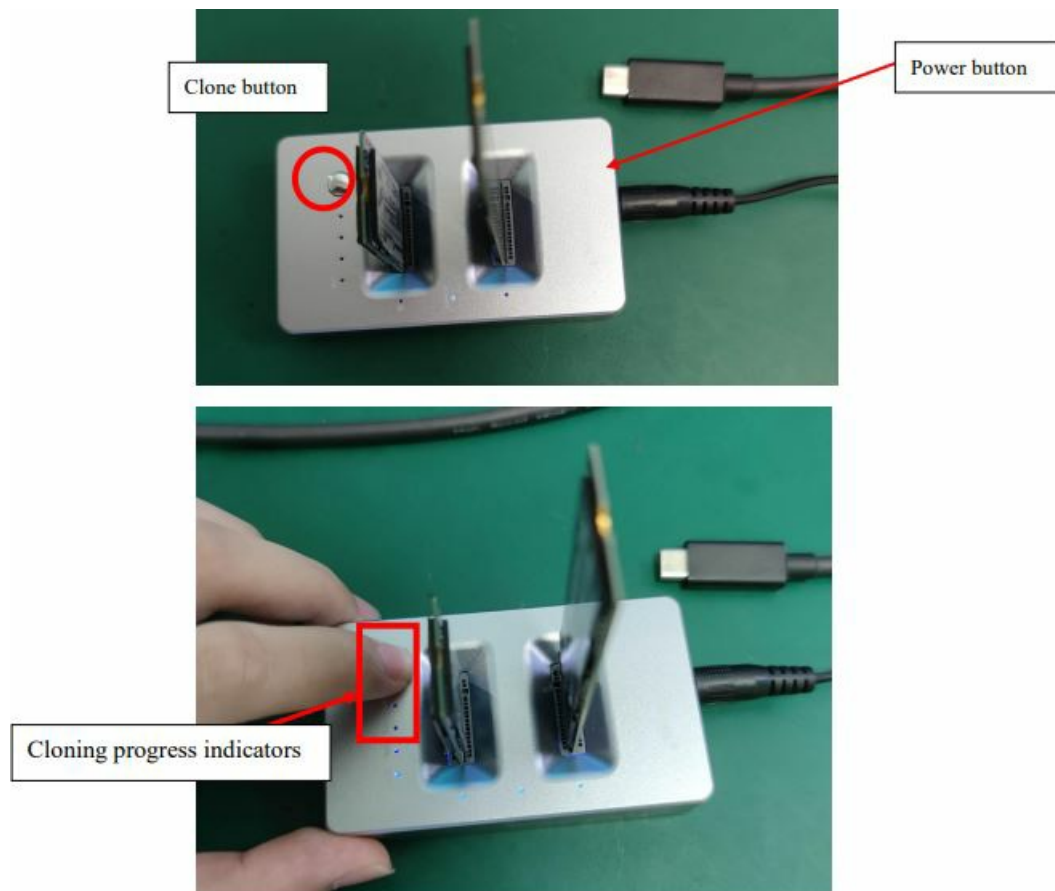
Step 2:

Connect the product to the computer using the data cable, and click the power button to turn on, then check in "Disk Management" whether 2 SSDs are recognized normally and in good conditions, ,as shown below:



Step 3:

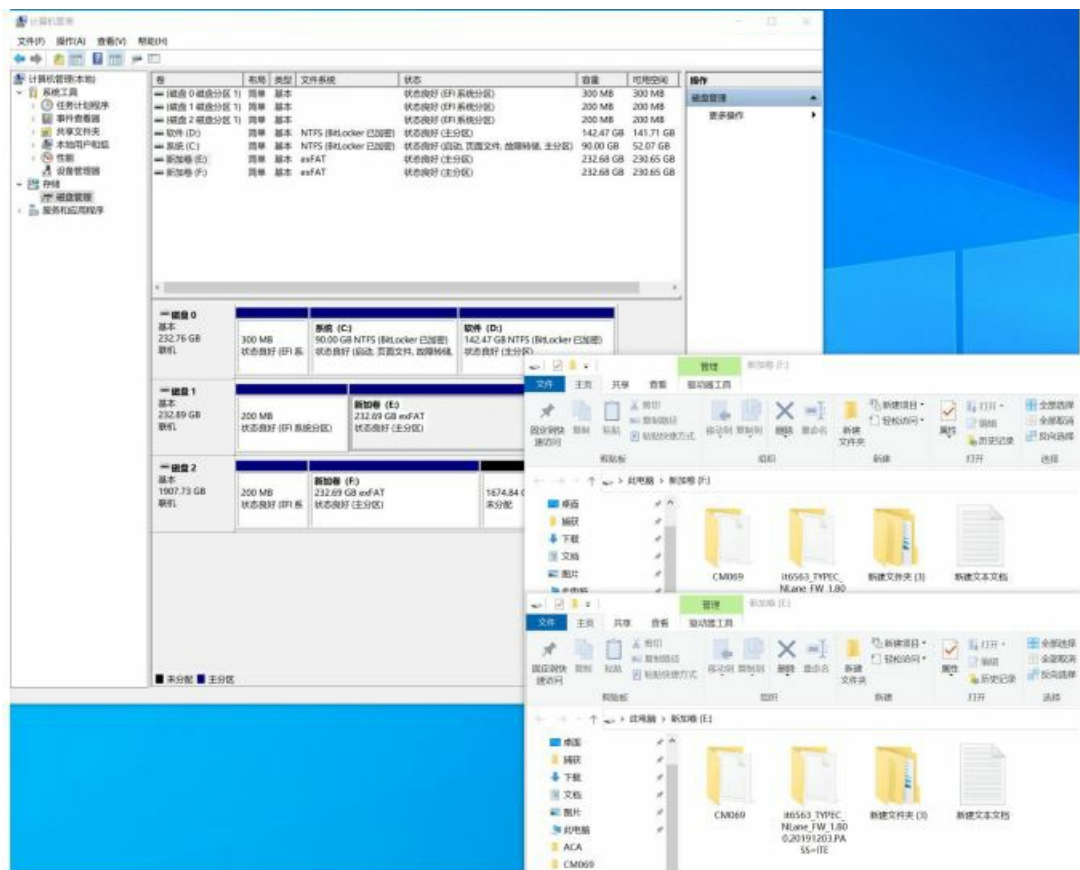
Turn off the product and disconnect the data cable from it, then turn on it again. After 2-3 seconds, the indicators for slot A and slot B will light up, then press and hold the clone button for 3-5 seconds (press and hold the button until all the indicators light up, then press the button again, and the indicators will flicker, meaning the cloning has begun), as shown below:



Step 4:

After all the indicators remain on without flickering, turn off the product. Then connect the product to the computer using the data cable. At this moment, only source SSD will be recognized (target SSD is under "Offline" status). Open "Disk Management", locate target SSD, right click on Disk 2 (marked as "Offline"), and select "Online", then you can open target SSD and read the files inside, as shown below:





Documents / Resources

	<p>ACASIS AC-M03 M.2 NVMe Enclosure and Duplicator [pdf] Instructions</p> <p>AC-M03 M.2 NVMe Enclosure and Duplicator, AC-M03 M.2, NVMe Enclosure and Duplicator, E nclosure and Duplicator, Duplicator</p>
--	---

References

- [User Manual](#)