



Contents [[hide](#)]

- [1 AC INFINITY SLS3 Soil Sensor Probe Exclusively for Controller](#)
- [2 PRODUCT WARNING](#)
- [3 USING THE SENSOR](#)
- [4 USING THE STEM](#)
- [5 CONNECT TO YOUR CONTROLLER](#)
- [6 PROGRAMMING](#)
- [7 MORE INFORMATION](#)
- [8 Documents / Resources](#)
 - [8.1 References](#)

AC INFINITY

AC INFINITY SLS3 Soil Sensor Probe Exclusively for Controller



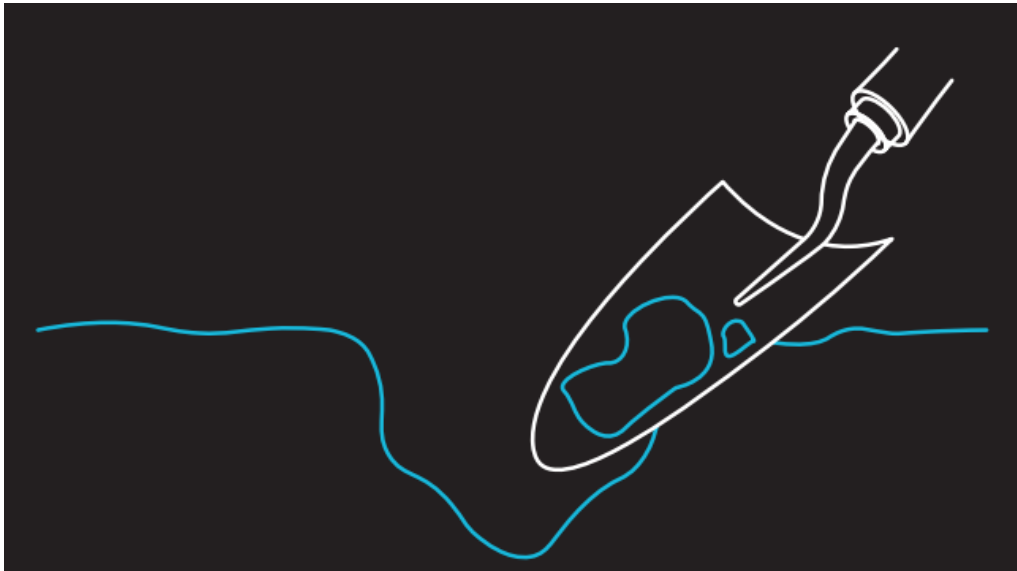
PRODUCT WARNING

- DO NOT FORCE THE SENSOR INTO THE GROUND.
- DO NOT bend the sensor.
- Read all instructions before installing and using this product.
- This product is intended for use with potting soil or potting mixes.
- Do not operate this product while its cord is damaged, or if it malfunctions, or has been dropped.

USING THE SENSOR

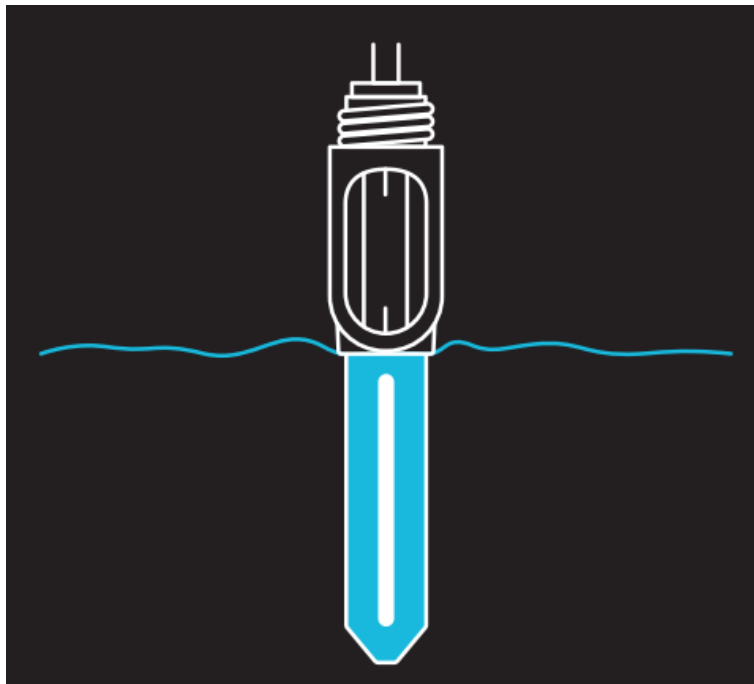
STEP 1

Dig a hole to your desired depth.



STEP 2

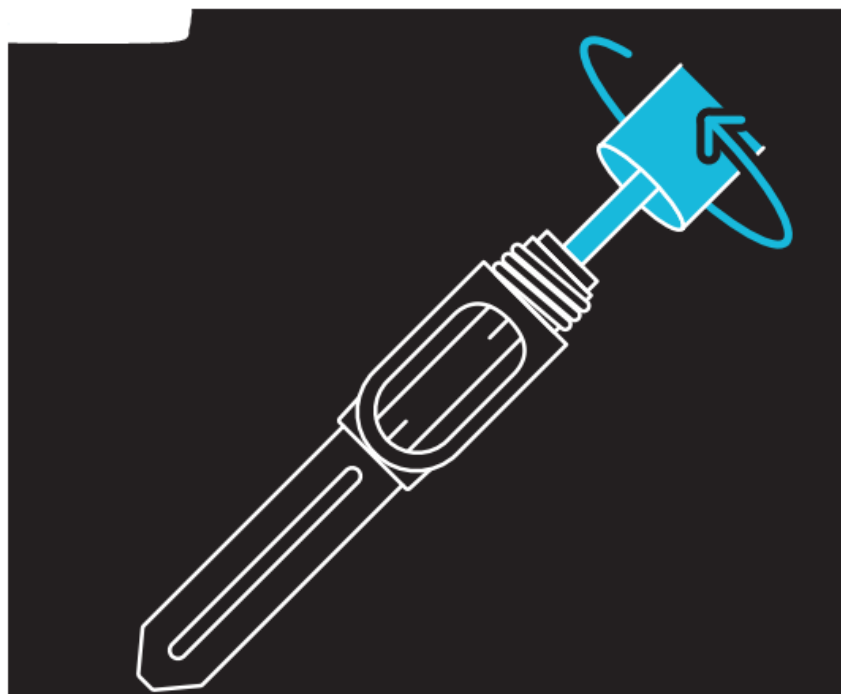
Remove the sensor cap and gently place the soil sensor into the hole (DO NOT force it). Pack soil around the sensor to secure its placement.



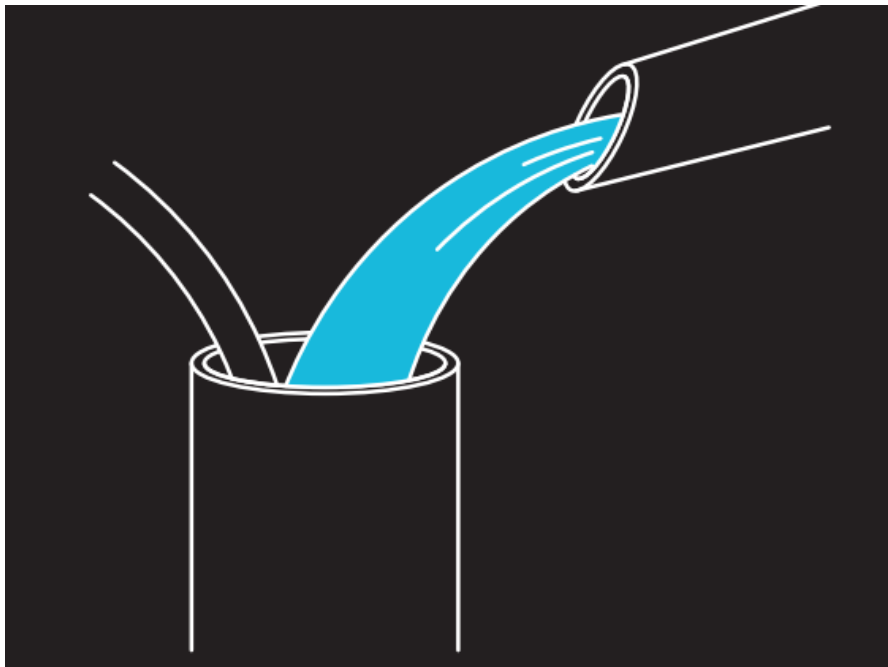
USING THE STEM

You may attach the stem to the sensor to bury it deeper within the soil, using the measurements along the sides to determine soil depth.

Feed the sensor cord through the stem, then twist the stem onto the sensor.

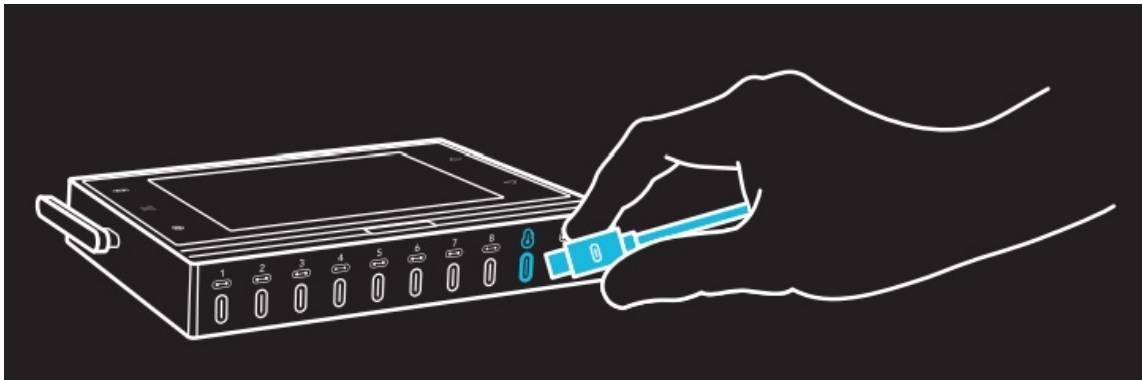


You may use the stem to slowly funnel water deeper into the soil. Make sure to cap the stem when not in use.



CONNECT TO YOUR CONTROLLER

Plug your sensor into the first sensor port if no other sensors are plugged in.



Only one soil sensor may be used per controller at a time. Use sensor splitters (sold separately) to pair additional ones.

PROGRAMMING

Visit our website at www.acinfinity.com or refer to your controller's manual to learn how to program our controllers.



This soil sensor is only compatible with specific controller models. Please visit our website for more information.

To set up automations and alerts, download the app.



MORE INFORMATION

WARRANTY

- WEBSITE | www.acinfinity.com
- EMAIL | support@acinfinity.com
- PHONE | [626-923-6399](tel:626-923-6399), 9 am to 5 pm PST
- ADDRESS | 21880 BAKER PARKWAY CITY OF INDUSTRY, CA 91789

DEALERS

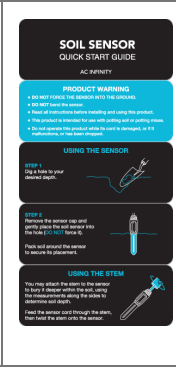
- EMAIL dealers@acinfinity.com
- PHONE | [626-838-4656](tel:626-838-4656), 9 am to 5 pm PST



MANUAL CODE SLS2412X1

COPYRIGHT © 2025 AC INFINITY INC. ALL RIGHTS RESERVED No part of the materials including graphics or logos available in this booklet may be copied, photocopied, reproduced, translated or reduced to any electronic medium or machine readable form, in whole or in part, without specific permission from AC Infinity Inc.

Documents / Resources





[AC INFINITY SLS3 Soil Sensor Probe Exclusively for Controller \[pdf\]](#) Use
r Guide

SLS3, SLS3 Soil Sensor Probe Exclusively for Controller, Soil Sensor Pro
be Exclusively for Controller, Sensor Probe Exclusively for Controller, Pro
be Exclusively for Controller, Exclusively for Controller, Controller

References

- [User Manual](#)

 AC
Infinity

 AC Infinity, controller, Exclusively for Controller, Probe Exclusively for Controller, Sensor Probe Exclusively for Controller, SLS3, SLS3 Soil Sensor Probe Exclusively for Controller, Soil Sensor Probe Exclusively for Controller

Leave a comment

Your email address will not be published. Required fields are marked *

Comment *

Name

Email

Website

☐ Save my name, email, and website in this browser for the next time I comment.

Post Comment

Search:

e.g. whirlpool wrf535swhz

Search

[Manuals+](#) | [Upload](#) | [Deep Search](#) | [Privacy Policy](#) | [@manuals.plus](#) | [YouTube](#)

This website is an independent publication and is neither affiliated with nor endorsed by any of the trademark owners. The "Bluetooth®" word mark and logos are registered trademarks owned by Bluetooth SIG, Inc. The "Wi-Fi®" word mark and logos are registered trademarks owned by the Wi-Fi Alliance. Any use of these marks on this website does not imply any affiliation with or endorsement.