

AC INFINITY CTR79P CONTROLLER 79 PRO



AC INFINITY CTR79P Controller 79 Pro User Guide

[Home](#) » [AC Infinity](#) » AC INFINITY CTR79P Controller 79 Pro User Guide 

Contents

- 1 AC INFINITY CTR79P Controller 79 Pro
- 2 Product Information
- 3 Product Usage Instructions
- 4 PRODUCT CONTENTS
- 5 POWERING AND SETUP
- 6 PROGRAMMING
- 7 DOWNLOAD THE APP
- 8 ADD A DEVICE
- 9 FCC Statement
- 10 FAQ
- 11 Documents / Resources
 - 11.1 References
- 12 Related Posts



AC INFINITY CTR79P Controller 79 Pro



Product Information

Specifications:

- **Product Label:** Product label
- **Product S/N:** ProductS/N

Product Instructions:

- To maintain compliance with FCC's RF Exposure guidelines, this equipment should be installed and operated with a minimum distance of 20cm from the radiator to your body. The device and its antenna(s) must not be co-located or operated in conjunction with any other antenna or transmitter.
- **IC Warning:** This device contains license-exempt transmitter(s)/receiver(s) that comply with Innovation Science and Economic Development Canada's license-exempt RSS(s). Operation is subject to the following two conditions: 1) this device may not cause interference, and 2) this device must accept any interference, including interference that may cause undesired operation of the device.
- **Radiation Exposure:** This equipment complies with Canada's radiation exposure limits set forth for an uncontrolled environment. To maintain compliance with IC's RF Exposure guidelines, this equipment should be installed and operated with a minimum distance of 20cm from the radiator to your body. The device and its antenna(s) must not be co-located or operated in conjunction with any other antenna or transmitter.

Product Usage Instructions

1. **Installation:** Ensure the equipment is installed with a minimum distance of 20cm from your body.
2. **Operation:** Do not co-locate or operate the device with any other antenna or transmitter.
3. **Compliance:** Make sure the device does not cause interference and is able to accept any interference that may occur.

Product label



Product S/N



PRODUCT CONTENTS

CTR79P



WALL HANG
CONTROLLER
(x1)



SENSOR
PROBE
(x1)



WALL-HANG
WOOD SCREWS
(x2)



WIRE
TIE
(x1)

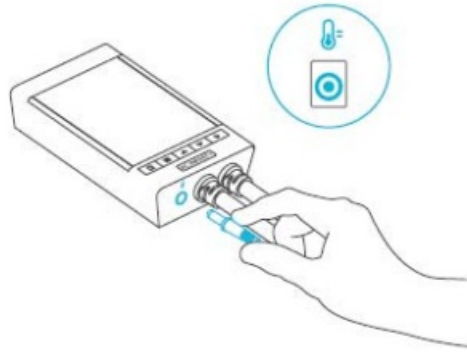


CABLE TIE
MOUNT
(x1)

POWERING AND SETUP

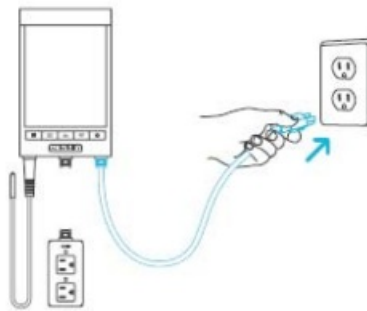
1. STEP 1

Plug the sensor probe into the 3.5mm port located at the bottom side of your controller.



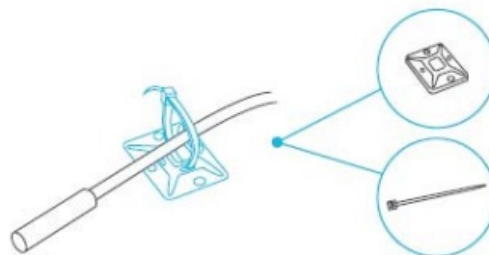
2. STEP 2

Insert the power plug into a wall outlet to power your controller.



3. STEP 3

Position the corded sensor probe and secure it by using the included zip ties and tie mounts.



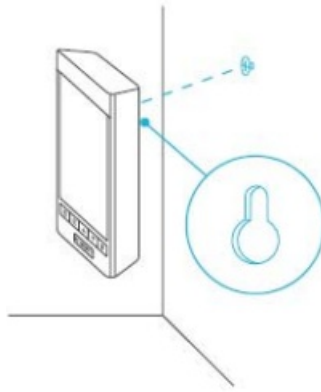
4. STEP 4

Locate a spot free of obstruction and secure the anchor into your wall. Twist the wood screw into the anchor.



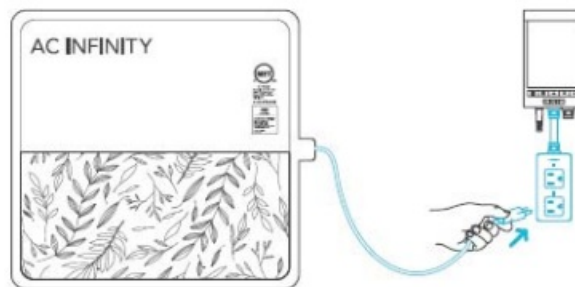
5. STEP 5

Hang your controller by the screw using the hole located on its backside.



6. STEP 6

Plug your device (not included) into one of the two sockets to power it with your controller.



PROGRAMMING



1. OUTLET BUTTON

Cycles through the two outlet devices. Each outlet device is programmed independently, or together when navigating to ALL.

2. MODE BUTTON

Cycles through each of your controller's modes: OFF, ON, AUTO (4 triggers), TIMER TO ON, TIMER TO OFF, CYCLE (On and Off), and SCHEDULE (On and Off).

3. UP/DOWN BUTTONS

Adjusts the value of your current mode. The up button increases and down button decreases the setting. Hold both to reset values to OFF or 0.

4. SETTING BUTTON

Cycles through each of your controller's settings: DISPLAY BRIGHTNESS, °F/ °C, CLOCK, CALIBRATION (Temperature and Humidity), and BUFFER (Temperature and Humidity).

DOWNLOAD THE APP

THE AC INFINITY APP

The AC Infinity app enables you to connect with the next generation of our intelligent controllers, giving you access to advance programs and environmental data.

1. Download the AC Infinity app from the App Store or Play Store by searching "AC Infinity".
2. Open the AC Infinity app and follow the instructions on page 36-42 to pair your controller with the app.



HOW TO USE THE APP

Visit our website at www.acinfinity.com or open your smartphone camera and scan the QR code below for more information on the AC Infinity app.



Appearance and features subject to change.

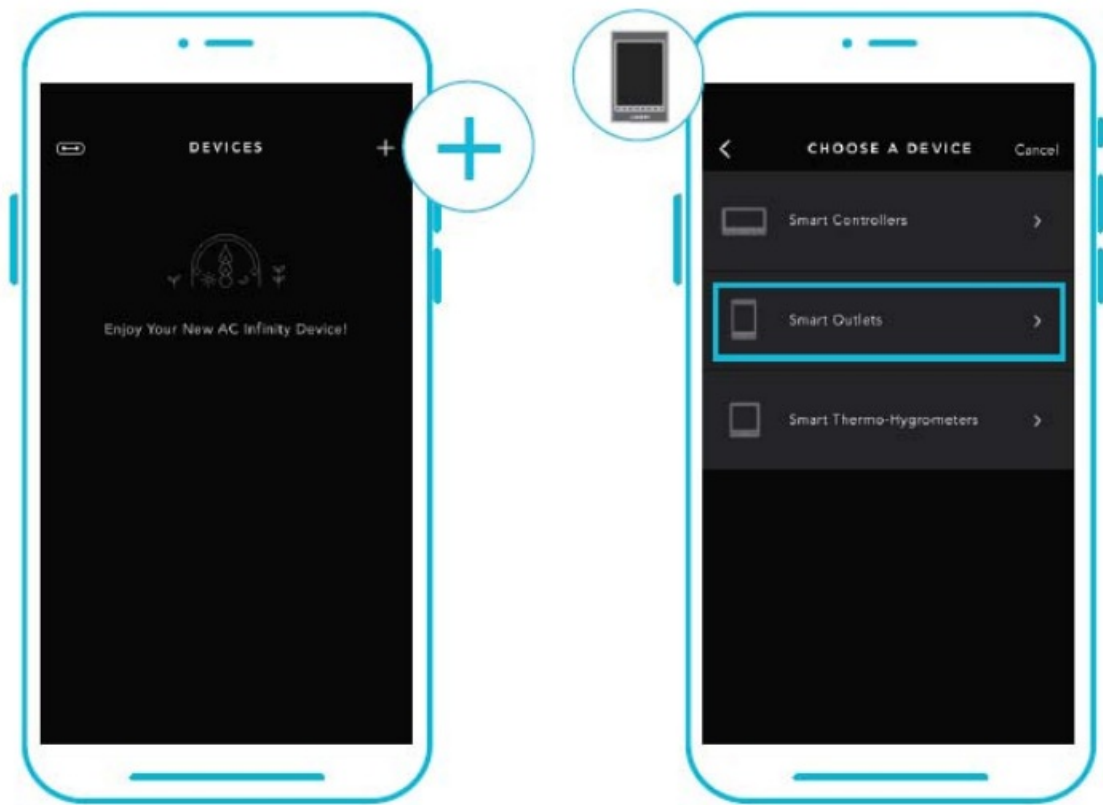
ADD A DEVICE

BLUETOOTH

SETUP AND PAIRING

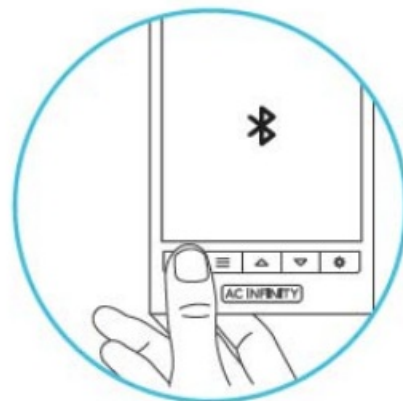
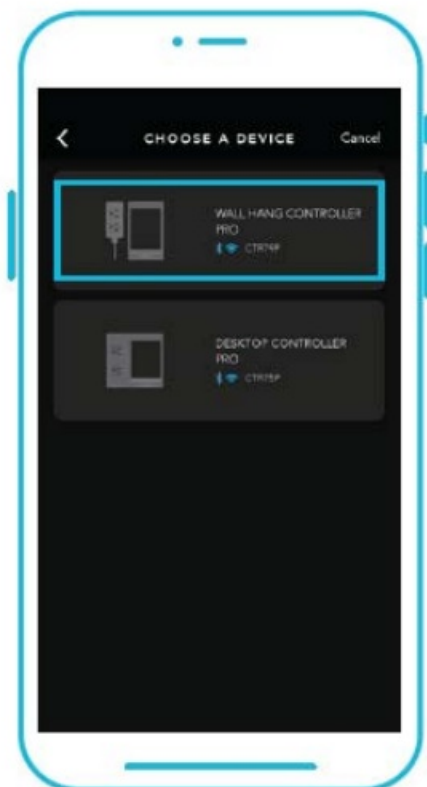
Power your device on before pairing your device with the app. Refer to pages 10-12 for more information regarding controller setup.

1. Tap on the "+" tab to add your smart device.
2. To launch the app, tap on the "Smart Outlets" tab to begin pairing.

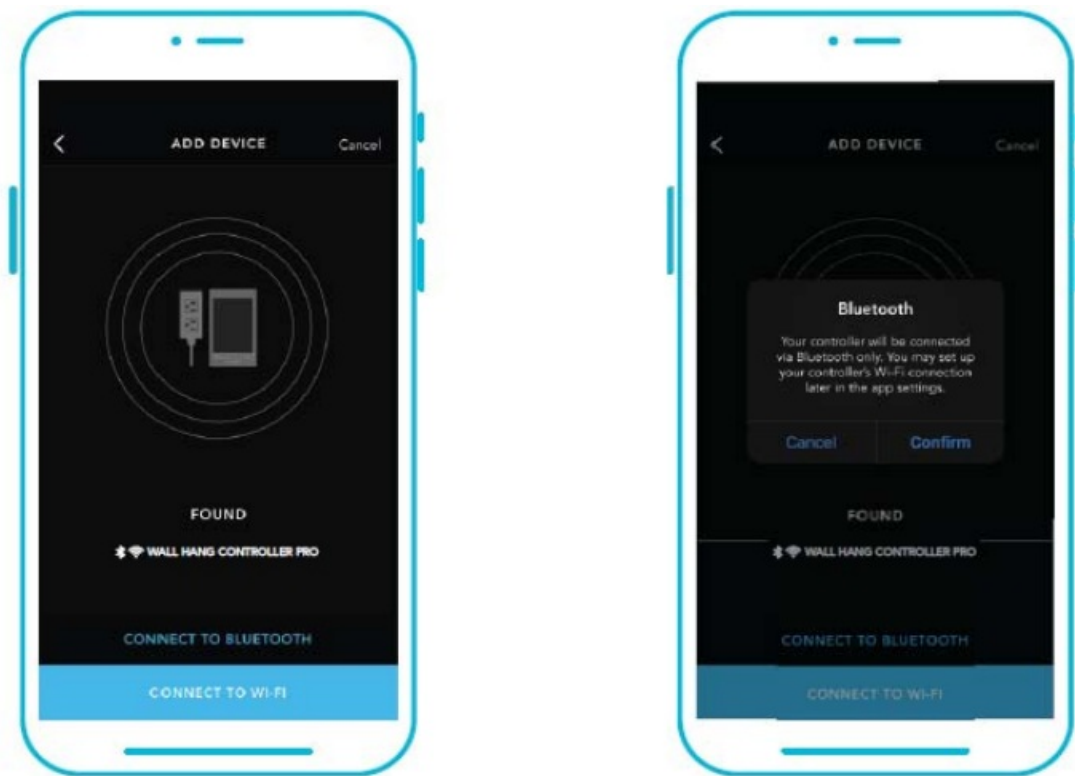


Please note: Bluetooth must be enabled on your mobile device before starting the pairing process.

3. Select your controller to begin pairing.
4. Hold the port button for 5 seconds to activate Bluetooth. Wait for the Bluetooth icon to start flashing on your controller's screen.



5. Connect using Bluetooth. To connect using Wi-Fi, skip to step 8.
6. Connecting with Bluetooth will disable Wi-Fi functionality. Go to the app settings page to re-enable and connect using Wi-Fi.



When pairing the app around multiple controllers, move your mobile device closer to your desired controller.

7. Tap the DONE button to complete the pairing process.



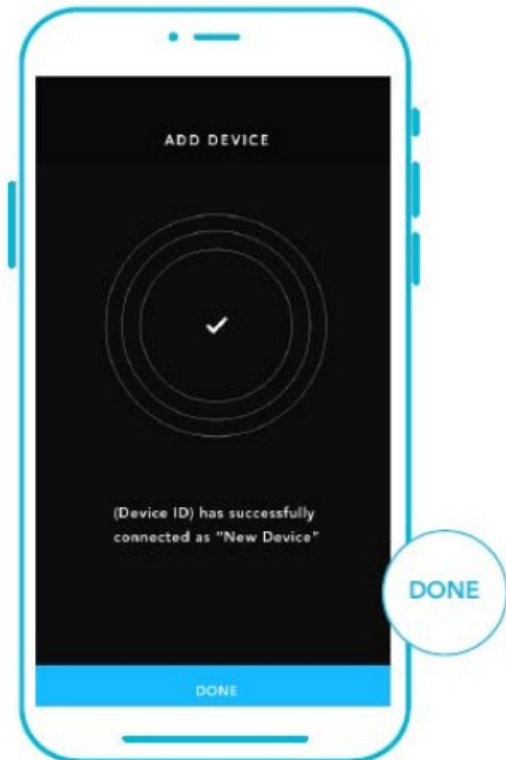
8. Log in or create an account to continue.

9. Enter your Wi-Fi network's password. You may also connect to an alternate 2.4 GHz router*.

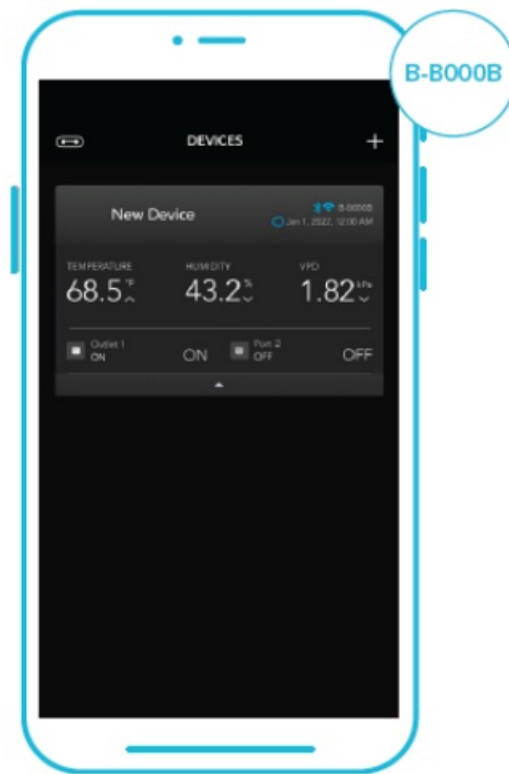


When pairing the app around multiple controllers, move your mobile device closer to your desired controller.

10. Follow these tips if the pairing process is unsuccessful.
11. Tap the DONE button to complete the pairing process. This controller is only compatible with 2.4 GHz frequency band routers. When connecting using Wi-Fi, make sure your mobile device is not connected to a 5 GHz frequency band network.



12. Your controller will appear in your smart device with a unique ID.



FCC Statement

copies e coi time te rest a proper are the equest tile for equipment has been tested and found to comply with the limits for a Class B digital device, pursuant to Part 15 of the FCC Rules. These limits are designed to provide reasonable protection against harmful interference in a residential installation. This equipment generates uses and can radiate radio frequency energy and, if not installed and used in accordance with the instructions, may cause harmful interference to radio communications. However, there is no guarantee that interference will not occur in a particular installation. If this equipment does cause harmful interference to radio or television reception, which can be determined by turning the equipment off and on, the user is. encouraged to try to correct the interference by one or more of the following measures:

- Reorient or relocate the receiving antenna.
- Increase the separation between the equipment and receiver.
- Connect the equipment into an outlet on a circuit different from that to which the receiver is connected.
- Consult the dealer or an experienced radio/TV technician for help.

This device complies with part 15 of the FCC Rules.

Operation is subject to the following two conditions:

1. This device may not cause harmful interference, and
2. this device must accept any interference received, including interference that may cause undesired operation.

RF Exposure Statement

To maintain compliance with FCC's RF Exposure guidelines, This equipment should be installed and operated with minimum distance of 20cm the radiator your body. This device and its antenna(s) must not be co-located or operation in conjunction with any other antenna or transmitter.

IC warning: This device contains license-exempt transmitters)/receivers)/ that comply with Innovation Science

and Economic Development Canada's licence-exempt RSS(s). Operation is subject to the following two conditions:

1. this device may not cause interference and
2. this device must accept any interference, including interference that may cause undesired operation of the device.

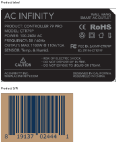
Radiation Exposure: This equipment complies with Canada radiation exposure limits set forth for an uncontrolled environment; To maintain compliance with IC's RF Exposure guidelines, This equipment should be installed and operated with minimum distance of 20cm the radiator your body. This device and its antenna(s) must not be co-located or operation in conjunction with any other antenna or transmitter.

FAQ

Q: What should I do if I experience interference while using the device?

A: If you experience interference, try adjusting the placement of the device to minimize potential sources of interference. Ensure no other antennas or transmitters are operating in close proximity to the device.

Documents / Resources

	<p>AC INFINITY CTR79P Controller 79 Pro [pdf] User Guide 2AXMF-CTR79P, 2AXMFCTR79P, ctr79p, CTR79P Controller 79 Pro, CTR79P, CTR79P Controller, Controller 79 Pro, Controller</p>
--	--

References

- [User Manual](#)

[Manuals+](#), [Privacy Policy](#)

This website is an independent publication and is neither affiliated with nor endorsed by any of the trademark owners. The "Bluetooth®" word mark and logos are registered trademarks owned by Bluetooth SIG, Inc. The "Wi-Fi®" word mark and logos are registered trademarks owned by the Wi-Fi Alliance. Any use of these marks on this website does not imply any affiliation with or endorsement.