



# AC INFINITY AC-CCA1 Cloudcom Thermo Hygrometer User Manual

[Home](#) » [AC Infinity](#) » AC INFINITY AC-CCA1 Cloudcom Thermo Hygrometer User Manual 



## CLOUDCOM THERMO-HYGROMETER USER MANUAL

### WELCOME

Thank you for choosing AC Infinity. We are committed to product quality and friendly customer service. If you have any questions or suggestions, please don't hesitate to contact us.  
Visit [www.acinfinity.com](http://www.acinfinity.com) and click contact for our contact information.

### MANUAL CODE CC2205X1

PRODUCT	MODEL	UPC-A
CLOUDCOM A1	AC-CCA1	819137022355
CLOUDCOM A2	AC-CCA2	819137022362
CLOUDCOM B1	AC-CCB1	819137022379
CLOUDCOM B2	AC-CCB2	819137022386

## Contents

- 1 **PRODUCT WARNING**
- 2 **INTERFERENCE from MH and HPS LIGHTS**
- 3 **KEY FEATURES**
- 4 **PRODUCT CONTENTS**
- 5 **INSTALLATION**
- 6 **PROGRAMMING**
- 7 **DOWNLOAD THE APP**
- 8 **DOWNLOAD THE APP**
- 9 **ADD A DEVICE**
- 10 **AC INFINITY PRODUCTS**
- 11 **WARRANTY**
- 12 **Documents / Resources**
  - 12.1 **References**
- 13 **Related Posts**



## **PRODUCT WARNING**

TO REDUCE THE RISK OF FIRE, ELECTRIC SHOCK, OR INJURY TO PERSONS, OBSERVE THE FOLLOWING:

1. Read all instructions before installing and using this product.
2. If you are unfamiliar or have doubts about performing this product's installation, seek the services of a qualified, trained, and licensed professional. Inappropriate installation will void this product's warranty.
3. Do not operate this product while its cord is damaged, or if it malfunctions, has been dropped, or is damaged in any manner.

## **INTERFERENCE from MH and HPS LIGHTS**

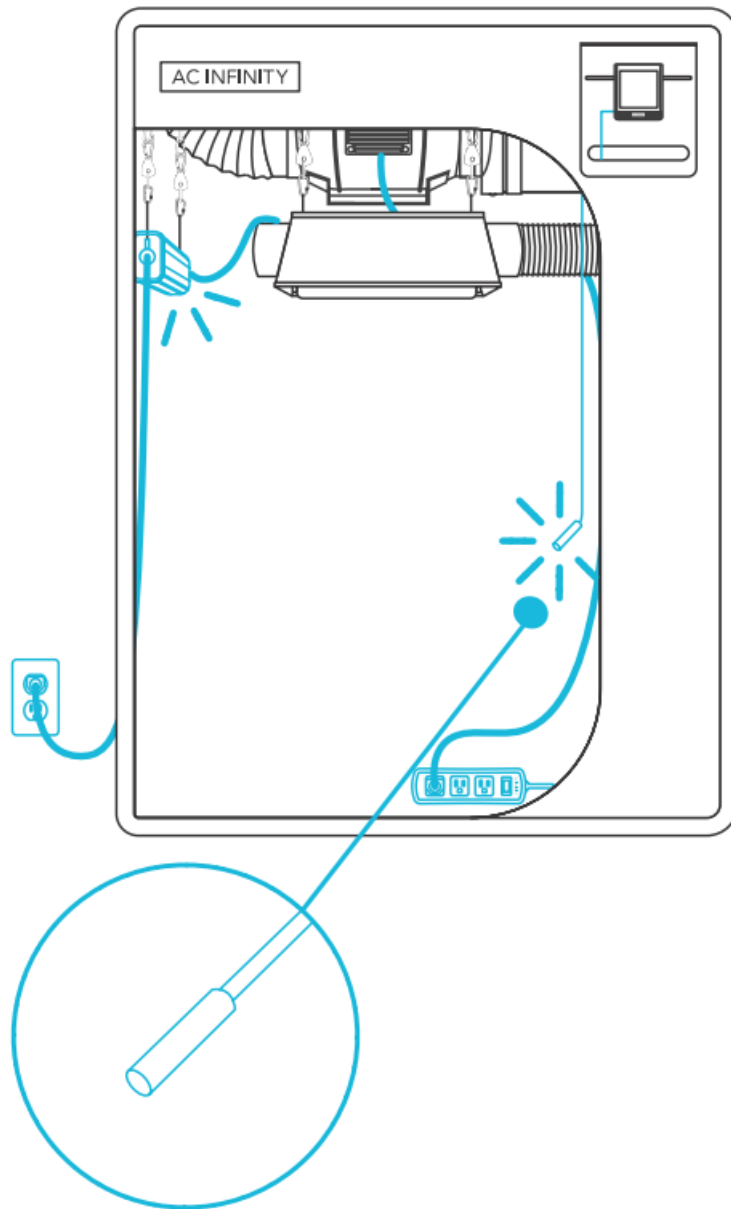
Certain grow light models with HID\* ballasts that do not use electromagnetic shielding will create an area of radio frequency interference (RFI). This can distort nearby frequency-sensitive components like internet lines and climate sensors. RFI can be emitted from the ballast's cords or the ballast itself.

Follow these steps to ensure proper functionality and to prevent radio frequency interference from affecting your sensor probe:

### **TIP 1**

Keep the probe cord far away from your ballast's cords to ensure the controller properly detects climate conditions.

You may also wrap the probe cord and create a cone around the sensor head with aluminum foil tape.



### **TIP 2**

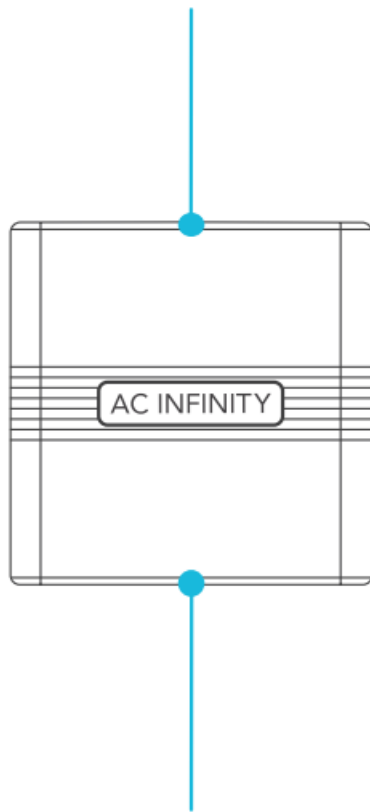
Do NOT plug your grow light and inline fan into the same duplex outlet. Plug your grow light and inline fan into separate power strips and electrical sockets.

\*MH, HPS, CMH, or CHPS

## **KEY FEATURES**

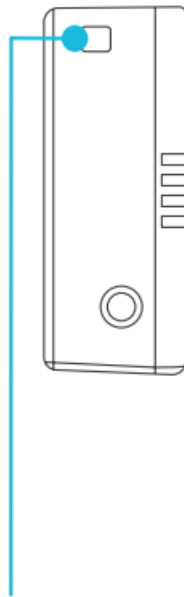
### **THERMO-HYGROMETER**

Detects current temperature and humidity and programs alarms when used with the AC Infinity app.



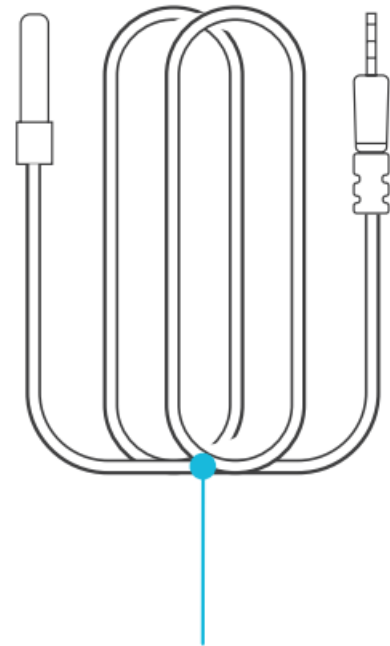
### VERSATILE

Compact design  
fits in any setting.



### STRAP HOLE

Allows for mobility  
and hanging.



### SENSOR PROBE

Provides precise  
climate readings.

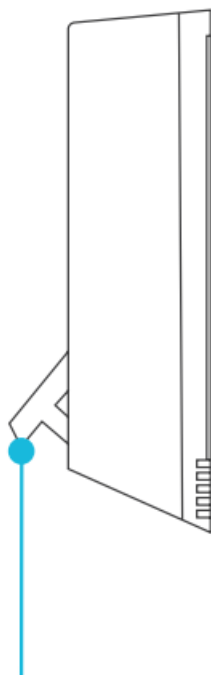
#### THERMO-HYGROMETER

Displays and detects current temperature and humidity.  
Programs alarms when used with the AC Infinity app.



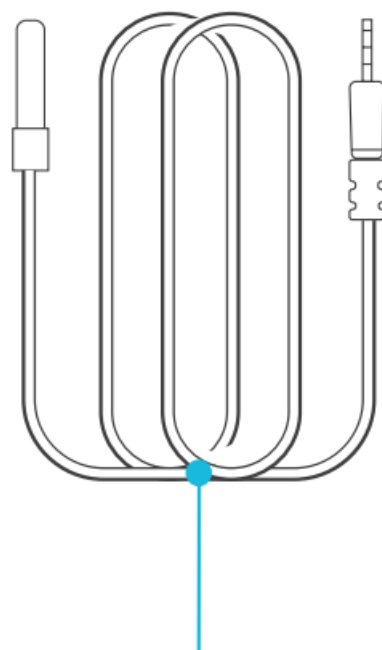
### BACKLIGHT

Improves visibility  
in darker settings.



### KICKSTAND

Keeps your  
hygrometer upright.



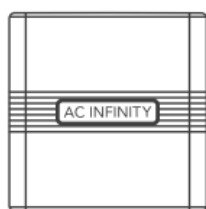
### SENSOR PROBE

Provides precise  
climate readings.

**Note:** External sensor probe included with AC-CCB1 only.

## PRODUCT CONTENTS

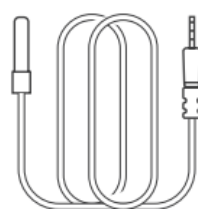
Included in AC-CCA1



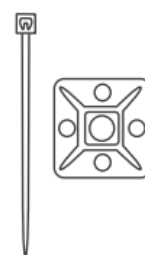
SMART  
HYGROMETER  
(x1)



CR2477 3V  
BATTERY  
(x1)

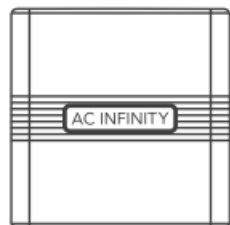


SENSOR  
PROBE  
(x1)



WIRE  
TIES  
(x1)

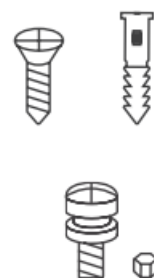
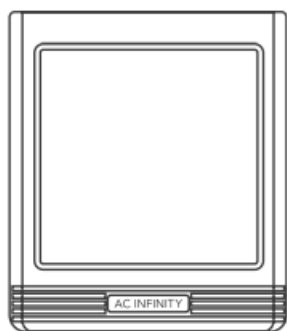
Included in AC-CCA2



SMART  
HYGROMETER  
(x1)

CR2477 3V  
BATTERY  
(x1)

Included in AC-CCB1

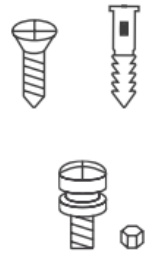
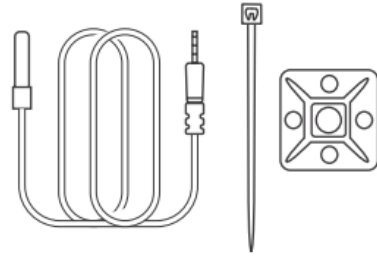
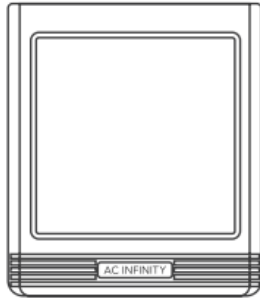


SMART  
HYGROMETER  
(x1)

AAA  
BATTERIES  
(x2)

MOUNTING  
SET  
(x1)

Included in AC-CCB2



SMART  
HYGROMETER  
(x1)

AAA  
BATTERIES  
(x2)

SENSOR  
PROBE  
(x1)

WIRE  
TIES  
(x1)

MOUNT-  
ING SET  
(x1)

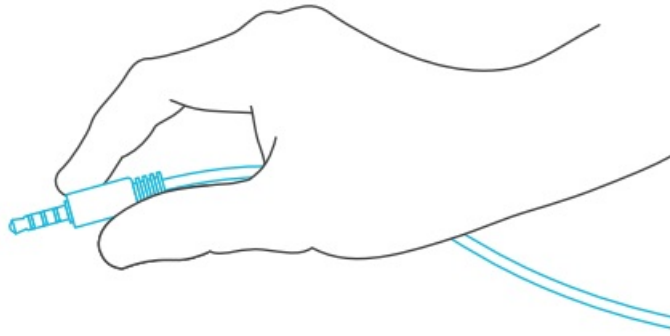
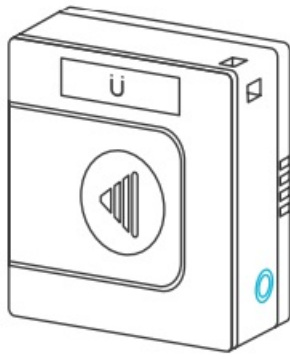
## INSTALLATION

### CLOUDCOM A1/B1

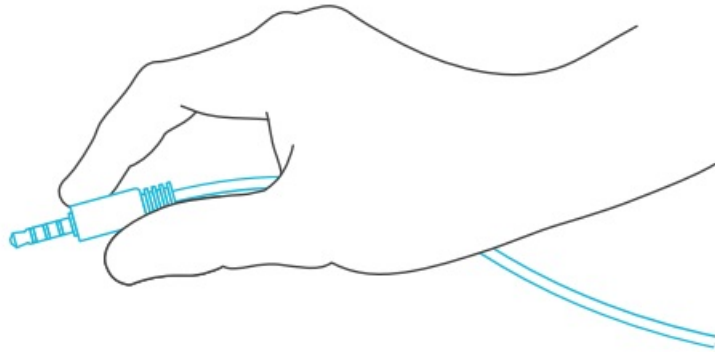
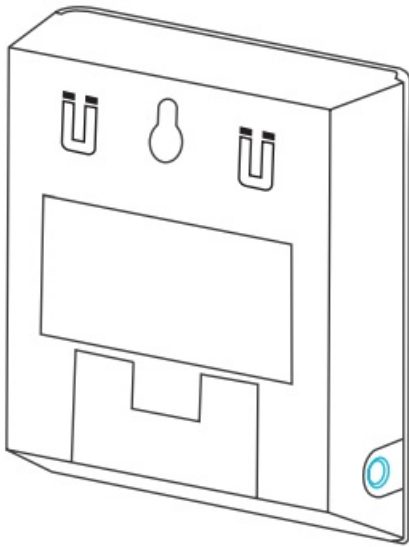
#### STEP 1

Plug the sensor probe into the hygrometer's 3.5mm jack.

Skip steps 1 and 2 if your model does not have a probe jack.



**CLOUDCOM A1**

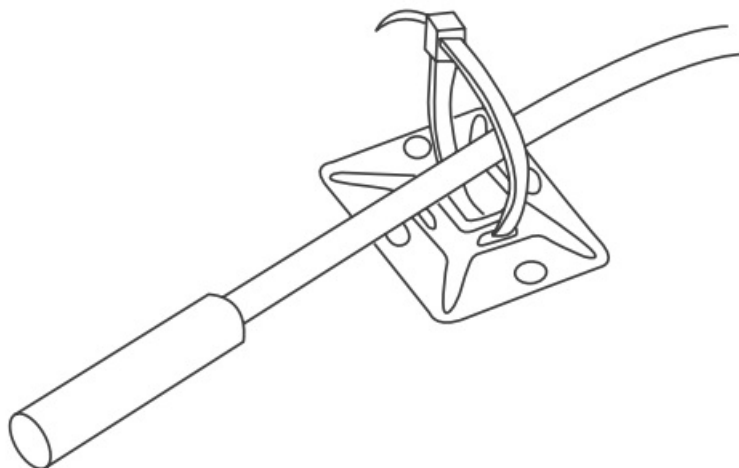


**CLOUDCOM B1**

**CLOUDCOM A1/B1**

**STEP 2**

Position the corded sensor probe and secure it by using the included zip tie and tie mount.

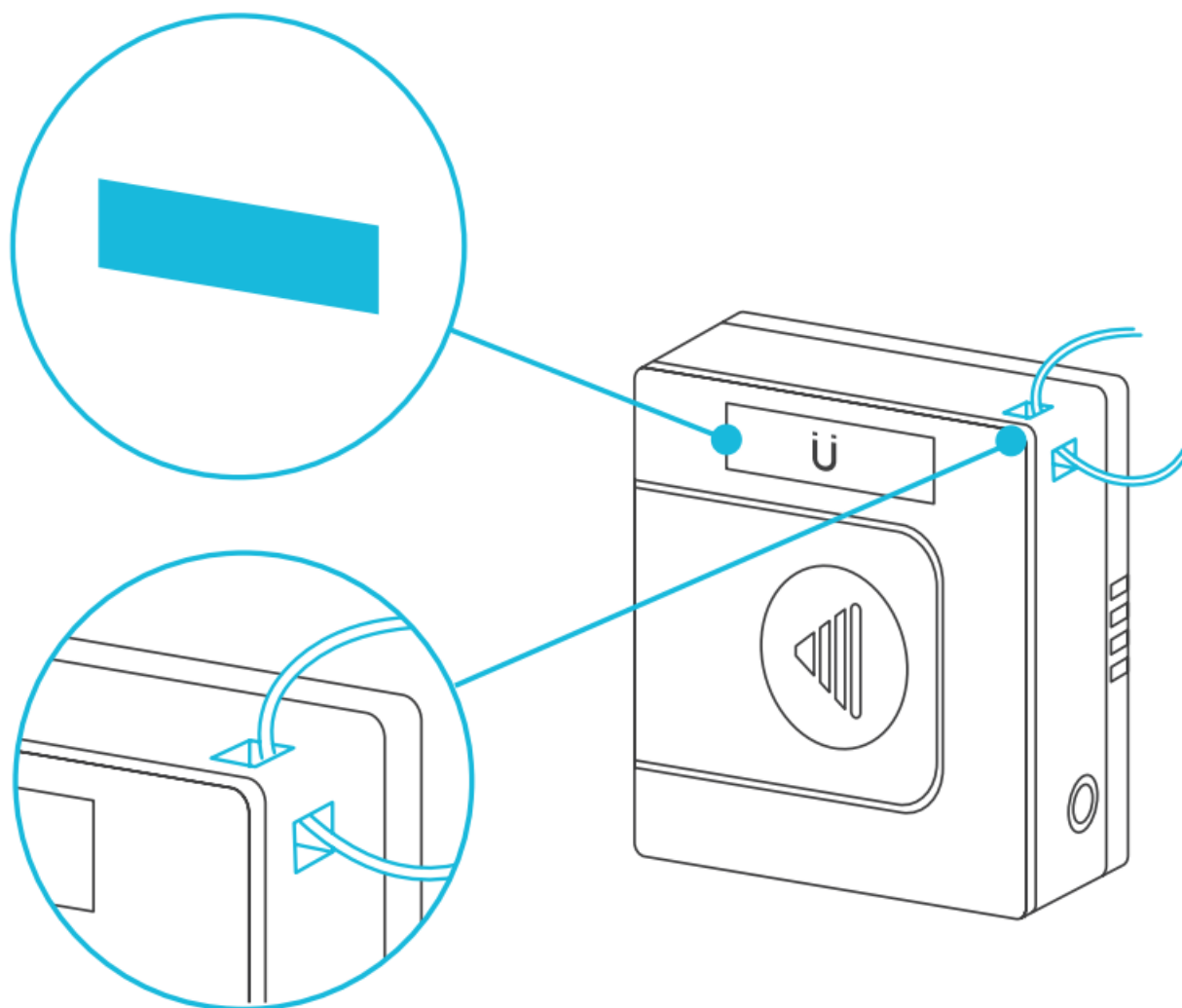


**CLOUDCOM A1/A2**



## MAGNET MOUNTING

Use the magnets on the back of your hygrometer to mount it onto a magnetic surface. You may also thread a strap through the corner hole to hang your hygrometer.

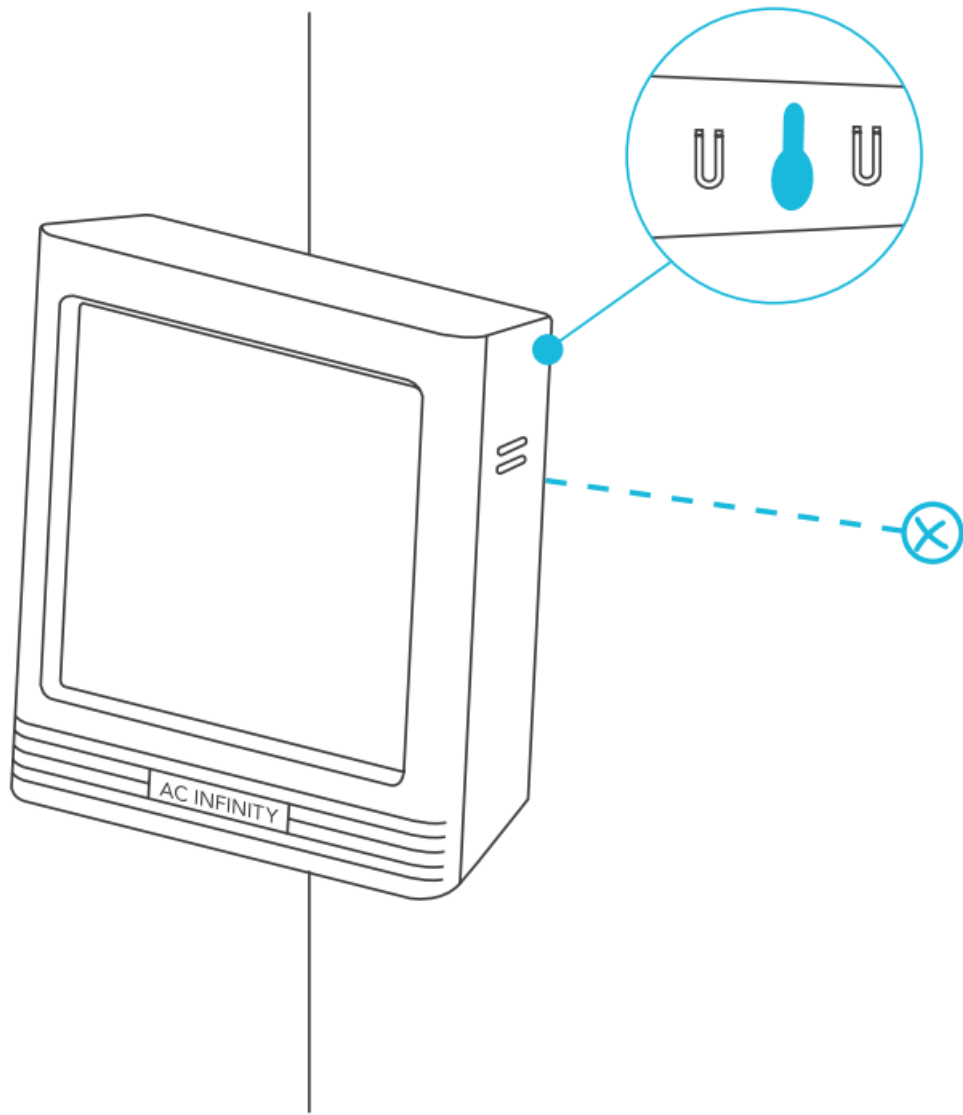


For temperature and humidity display and alarm programming, see page 21 to download the app.

## CLOUDCOM B1/B2

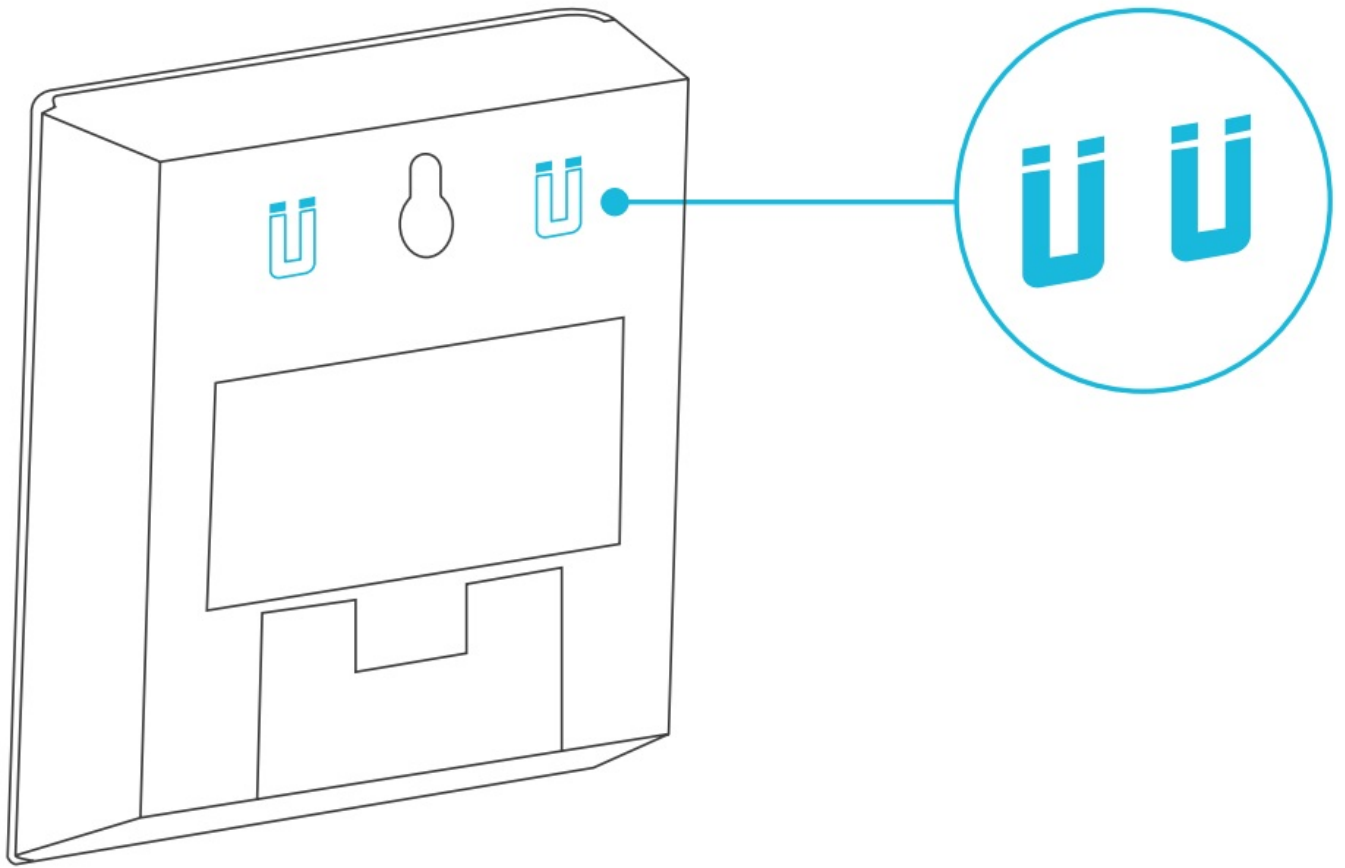
### WALL MOUNTING

Apply a screw set onto a spot on your wall to wall mount your hygrometer.



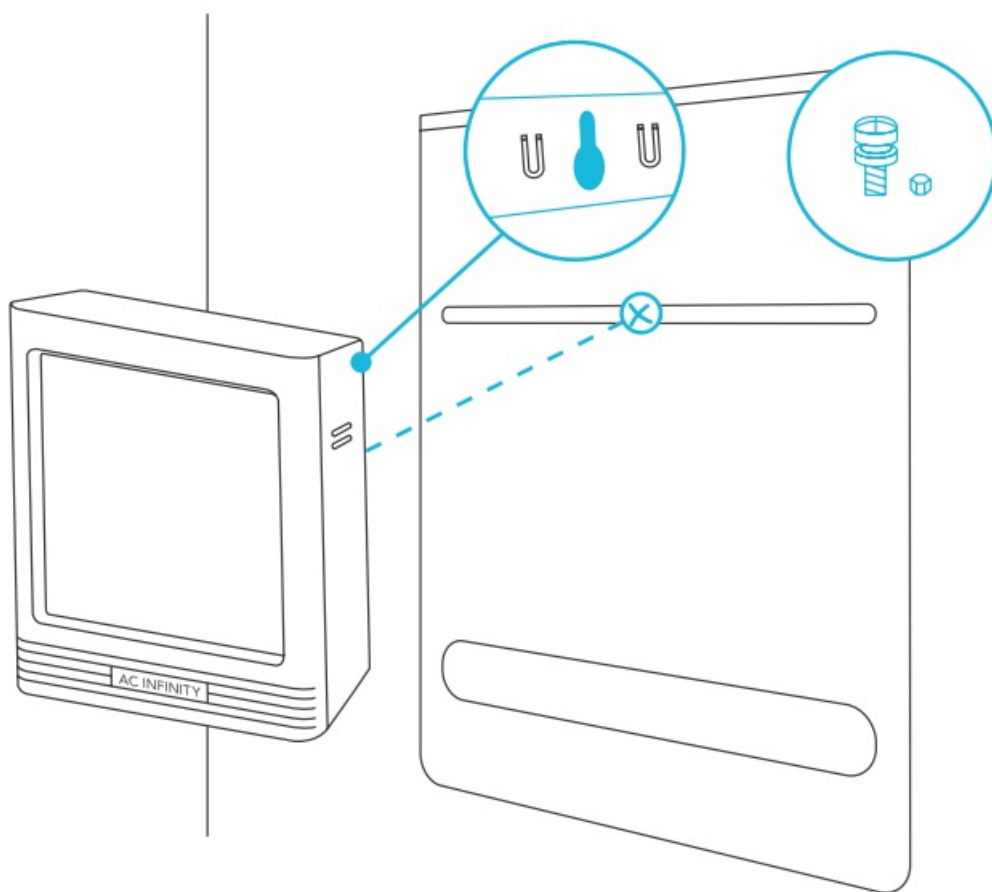
**CLOUDCOM B1/B2**  
**MAGNET MOUNTING**

Use the magnets on the back of your hygrometer to mount it onto a magnetic surface.



**CLOUDCOM B1/B2  
PLATE MOUNTING\***

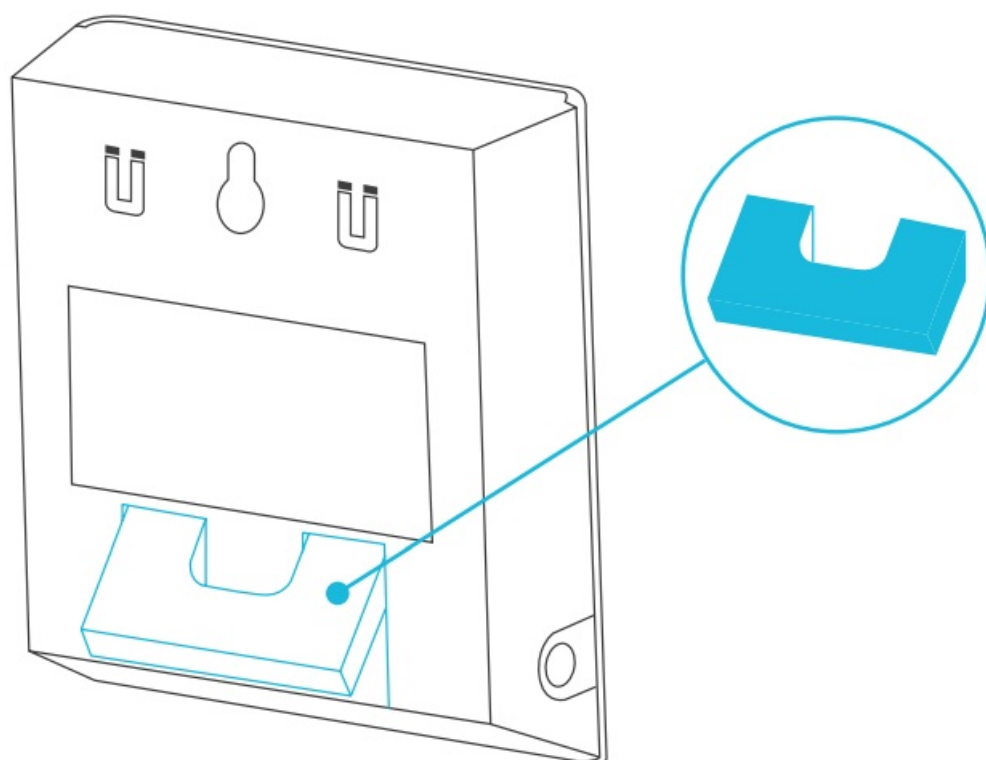
Screw the bolts into the slit at the upper half of the plate.  
Hang the hygrometer by the bolts using the holes on the backside.



\*Controller plate not included

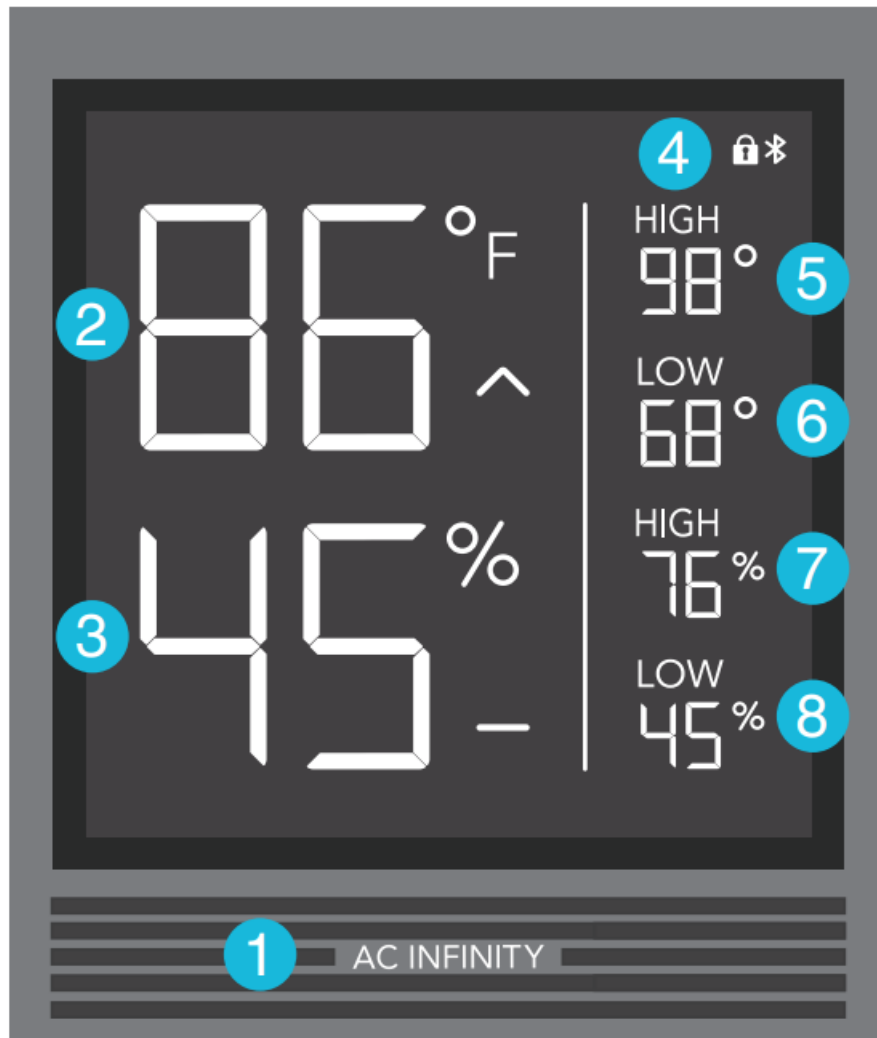
**CLOUDCOM B1/B2  
KICKSTANDING**

Open the stand behind the hygrometer to set it tilted on your desktop.



## PROGRAMMING

CLOUDCOM B1/B2



### 1. LOGO BUTTON

Toggles the backlight between on and off when tapped, and switches the temperature scale between Fahrenheit and Celsius when held for 5 seconds.

Hold the logo button for 10 seconds until the alarm icon disappears to stop the alarm beeping.

### 2. PROBE TEMPERATURE

Displays the current temperature that the probe is detecting.

Shows "—" if no probe is plugged in (AC-CCB1 only). Trend indicator signals a rise, steady, or fall in temperature within the last hour.

### 3. PROBE HUMIDITY

Displays the current humidity that the probe is measuring.

Shows "—" if no probe is plugged in (AC-CCB1 only). Trend indicator signals a rise, steady, or fall in humidity within the last hour.

### 4. STATUS ICONS

Flashes or displays the alert icons from the controller. Icons include Alarm and Bluetooth.

### 5. HIGH TEMPERATURE

Displays the current highest temperature reading.

#### 6. LOW TEMPERATURE

Displays the current lowest temperature reading.

#### 7. HIGH HUMIDITY

Displays the current highest humidity reading.

#### 8. LOW HUMIDITY

Displays the current lowest humidity reading.

### DOWNLOAD THE APP

#### THE AC INFINITY APP

The AC Infinity app enables you to connect with this intelligent hygrometer, giving you access to advance programs and environmental data.

1. Download the AC Infinity app from the App Store or Play Store by searching “AC Infinity”.



2. Open the AC Infinity app and follow the instructions on page 22-27 to pair your hygrometer with the app.



When pairing the app around multiple hygrometers, move your mobile device closer to your desired hygrometer.

### DOWNLOAD THE APP

#### QUICK TIP FOR EASY ACCESS

Open your smart phone camera and scan the QR code below to visit our website [www.acinfinity.com](http://www.acinfinity.com) for more information on the AC Infinity app.

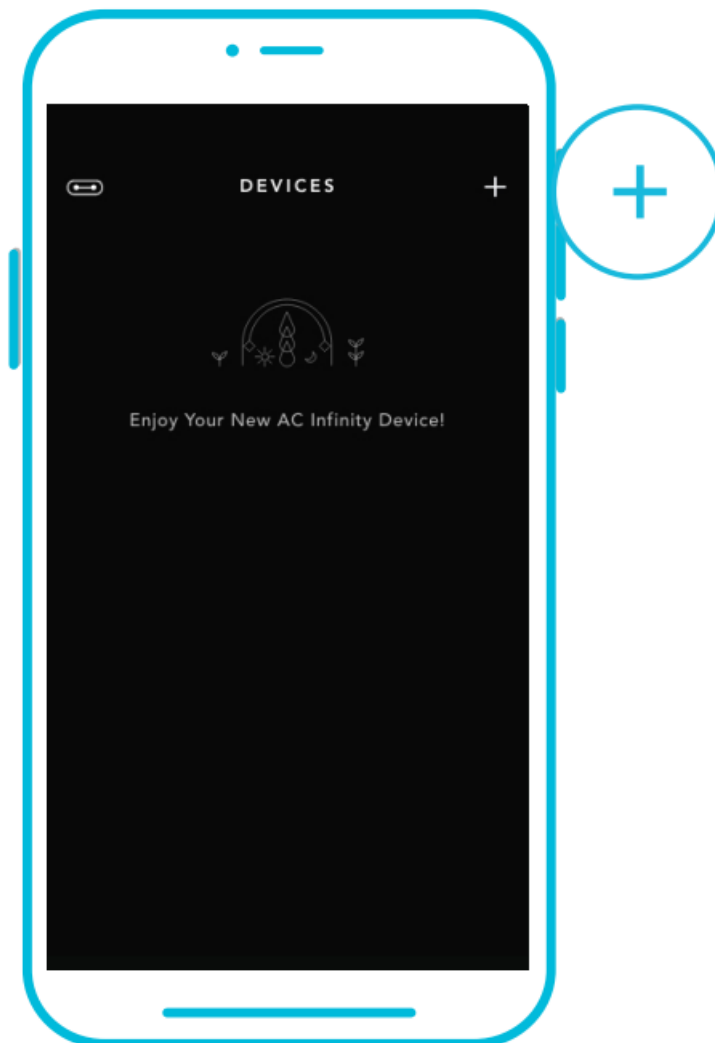


<https://www.acinfinity.com/pages/technical-guides/how-to-use-the-ac-infinity-app.html>

The AC Infinity app's appearance and features are subject to change. Refer to our website for the latest instructions.

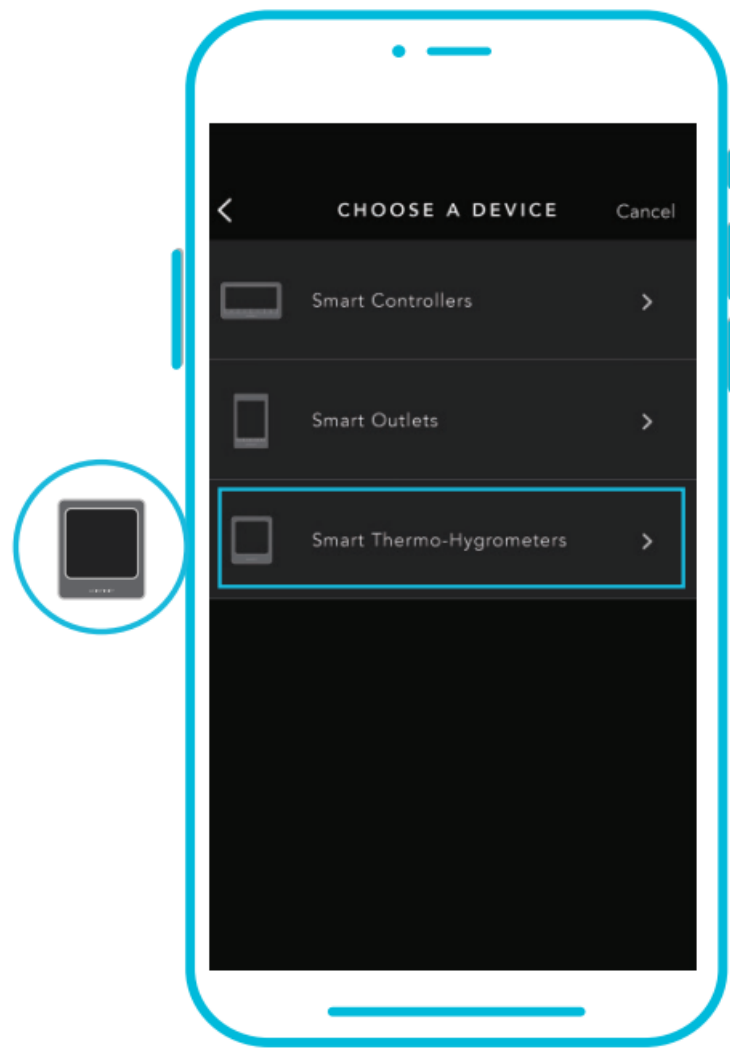
## ADD A DEVICE

1. Tap on the “+” tab to add your smart device.



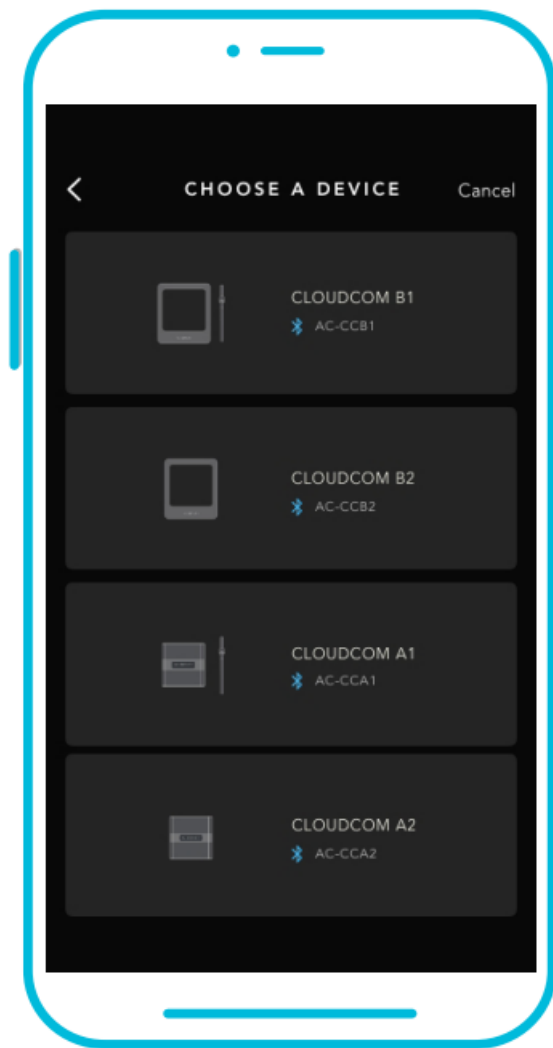
**Note:** Enable Bluetooth before starting the pairing process.

2. To launch the app, tap on the “Smart Thermo-Hygrometers” tab to begin pairing.

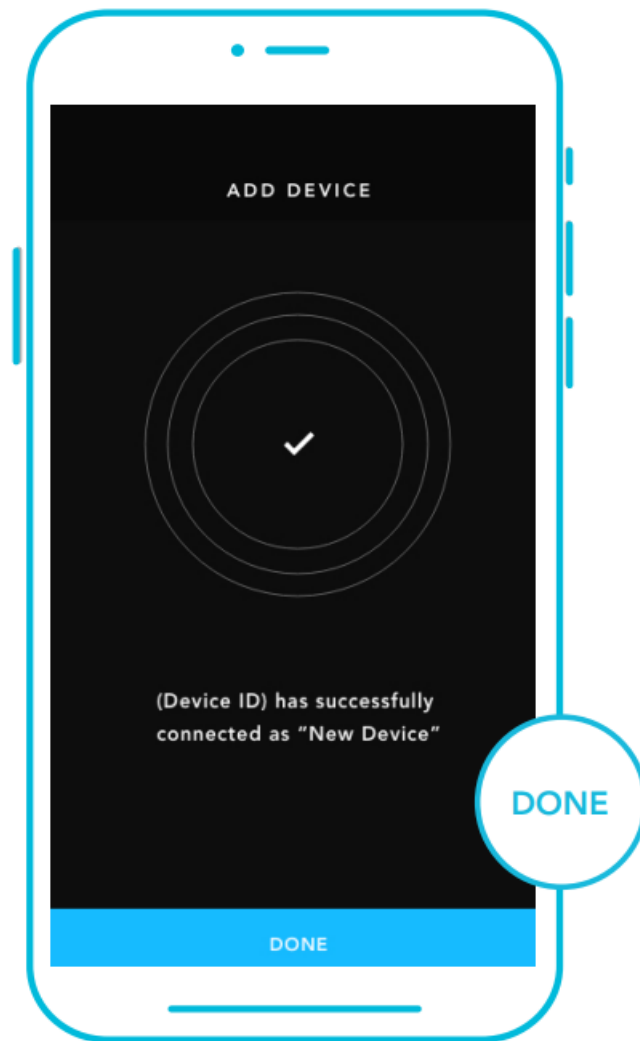


3. Select your hygrometer to begin pairing.

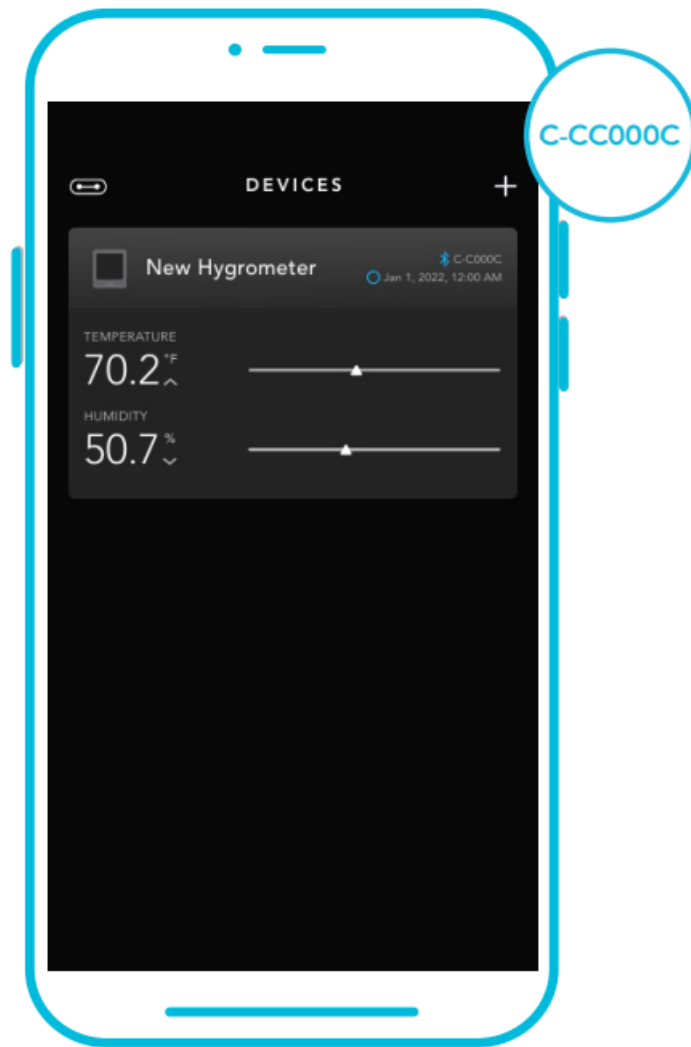




4. Tap DONE button to complete the pairing process.



5. Your hygrometer will appear in your smart device with a unique ID.



## AC INFINITY PRODUCTS

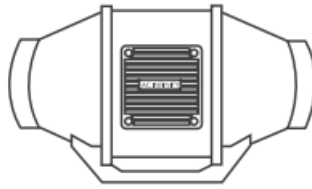
### Seedling Mats

The SUNCORE series is a line of seedling mat designed to improve germination success and accelerate your seeds' growth process by emitting steady heat. Each mat is lined with an innovative farinfrared film that provides even heating distribution.



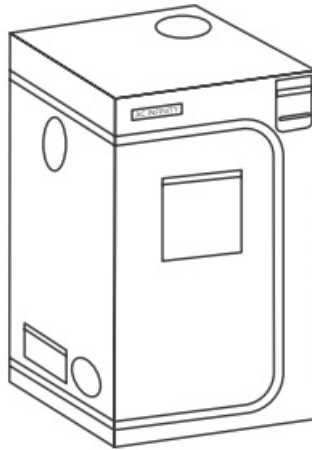
### Inline Duct Fans

The CLOUDLINE series is a line of duct fans designed to quietly ventilate AV rooms and closets, as well as various DIY air circulation and exhaust projects. Features a thermal controller with intelligent programming that will automatically adjust duct fan speeds in response to changing temperatures.



### Advance Grow Tents

The CLOUDLAB series is a line of grow tents designed to create ideal growing conditions and facilitate indoor plant cultivation year-round. Features 2000D thick oxford canvas lined with inner diamond patterned mylar that maximizes grow light luminosity, and a reinforced frame with 150 lb. weight capacity. Includes a mounting plate to install your AC Infinity controller onto.



Discover the latest innovations in environmental controls at [acinfinity.com](https://acinfinity.com)

### WARRANTY

This warranty program is our commitment to you, the product sold by AC Infinity will be free from defects in manufacturing for a period of two years from the date of purchase. If a product is found to have a defect in material or workmanship, we will take the appropriate actions defined in this warranty to resolve any issues.

The warranty program applies to any order, purchase, receipt, or use of any products sold by AC Infinity or our authorized dealerships. The program covers products that have become defective, malfunctioned, or expressively if the product becomes unusable. The warranty program goes into effect on the date of purchase. The program will expire two years from the date of purchase. If your product becomes defective during that period, AC Infinity will replace your product with a new one or issue you a full refund.

The warranty program does not cover abuse or misuse. This includes physical damage, submersion of the product in water, incorrect Installation such as wrong voltage input, and misuse for any reason other than intended purposes. AC Infinity is not responsible for consequential loss or incidental damages of any nature caused by the product. We will not warrant damage from normal wear such as scratches and dings.

Contact our dealers department at [dealers@acinfinity.com](mailto:dealers@acinfinity.com) or (626) 838-4656 for more information about our dealers and distributors program. Contact our customer service department at [support@acinfinity.com](mailto:support@acinfinity.com) or 626-923-6399 for product and warranty assistance. Our business hours are Monday through Friday, 9:00 am to 5:00 pm PST.



If you have any issues with this product, contact us and we'll happily resolve your problem or issue a full refund!

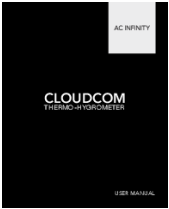
### COPYRIGHT © 2022 AC INFINITY INC. ALL RIGHTS RESERVED

No part of the materials including graphics or logos available in this booklet may be copied, photocopied, reproduced, translated or reduced to any electronic medium or machine readable form, in whole or in part, without

specific permission from AC Infinity Inc.

[www.acinfinity.com](http://www.acinfinity.com)

## Documents / Resources

	<p><a href="#">AC INFINITY AC-CCA1 Cloudcom Thermo Hygrometer</a> [pdf] User Manual AC-CCA1, AC-CCA2, AC-CCB1, AC-CCB2, AC-CCA1 Cloudcom Thermo Hygrometer, Cloudco m Thermo Hygrometer, Thermo Hygrometer, Hygrometer</p>
---	--

## References

- [AC Infinity](#)
- [AC Infinity](#)

Manuals+.