



ABUS FG400 Lockable Window Handle Instruction Manual

[Home](#) » [ABUS](#) » ABUS FG400 Lockable Window Handle Instruction Manual 

ABUS

Security Tech Germany
FG400 Lockable Window Handle
Instruction Manual





Contents

- 1 FG400 Lockable Window Handle
- 2 Installation instructions
- 3 Operation
- 4 Documents / Resources
 - 4.1 References

FG400 Lockable Window Handle

Lockable window handle

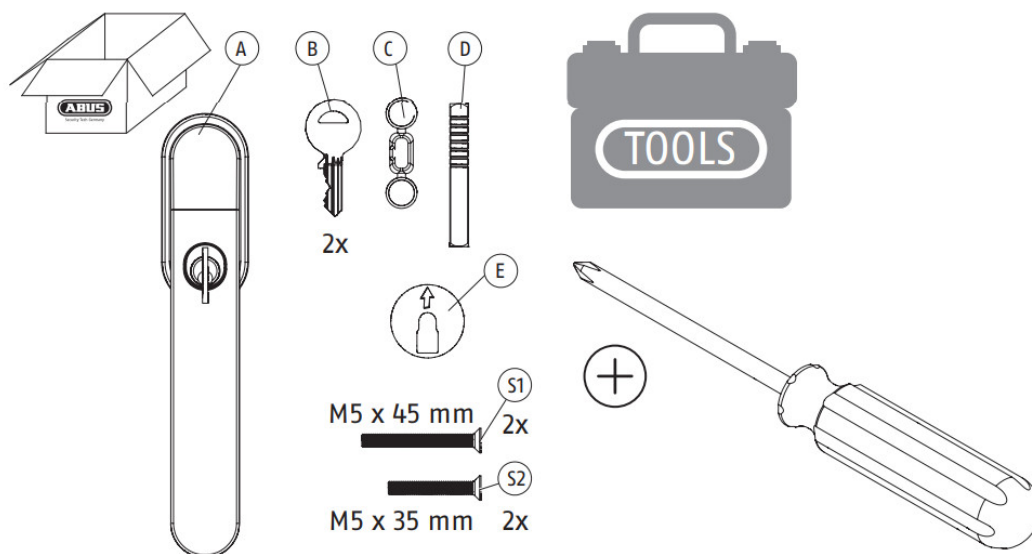
Please read this guide carefully before installation and use. Keep these instructions and provide all users with instruction on how to use it.

Possible uses and important information

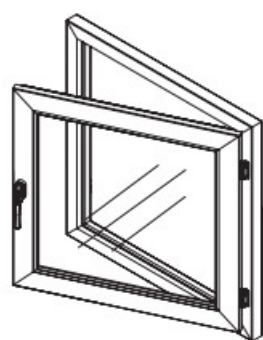
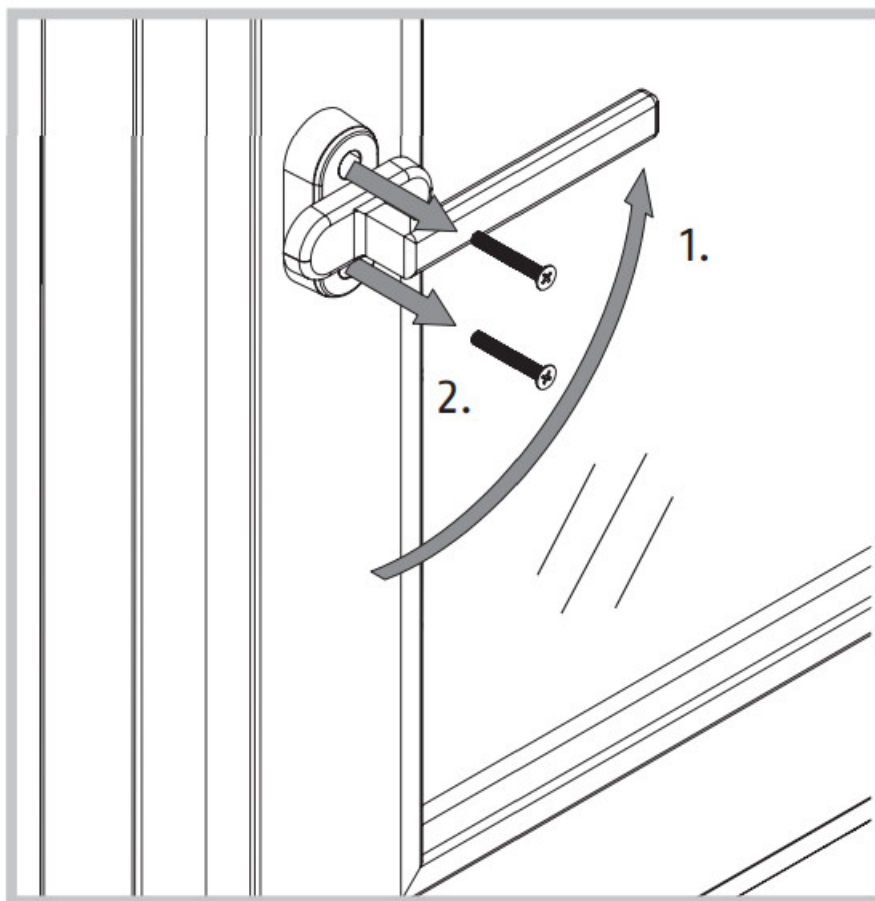
FG400 is suitable for all windows that can open to the rights or left which are made of plastic, wood and aluminum. FG400 complies with the strict test requirements of the DIN 18267. Classification key according to DIN EN 13126-3:201202: 2 3/180 – 0 1 2 3/3 3/C1 -. The registration number of the DIN Carto-approval is: 9N005.



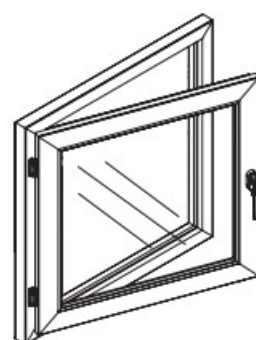
Further fitting / using details



Dismantling existing handle (if screws > 45 mm: keep and insert at 2.4).



R

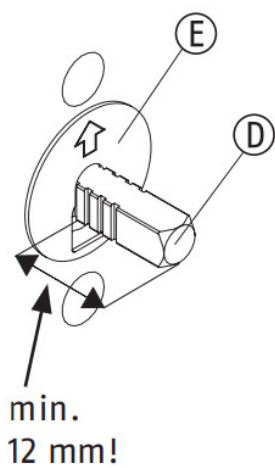


L

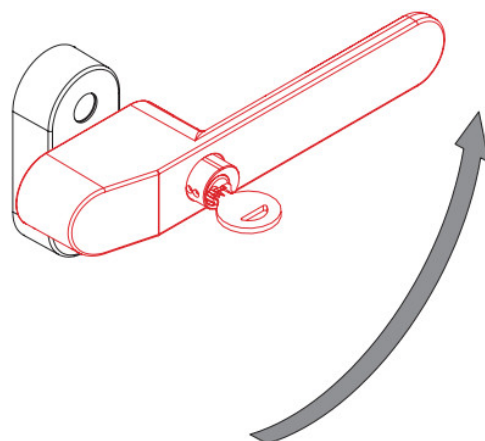
The instructions show the assembly on a right-hand window (R). The assembly is reversed for left-hand windows

Installation instructions

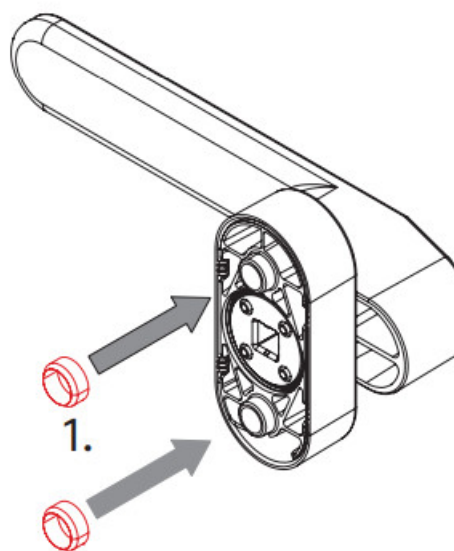
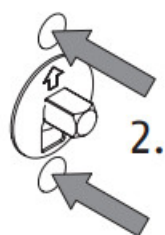
2.1



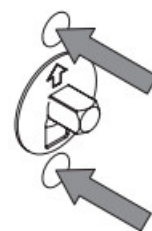
2.2



2.3



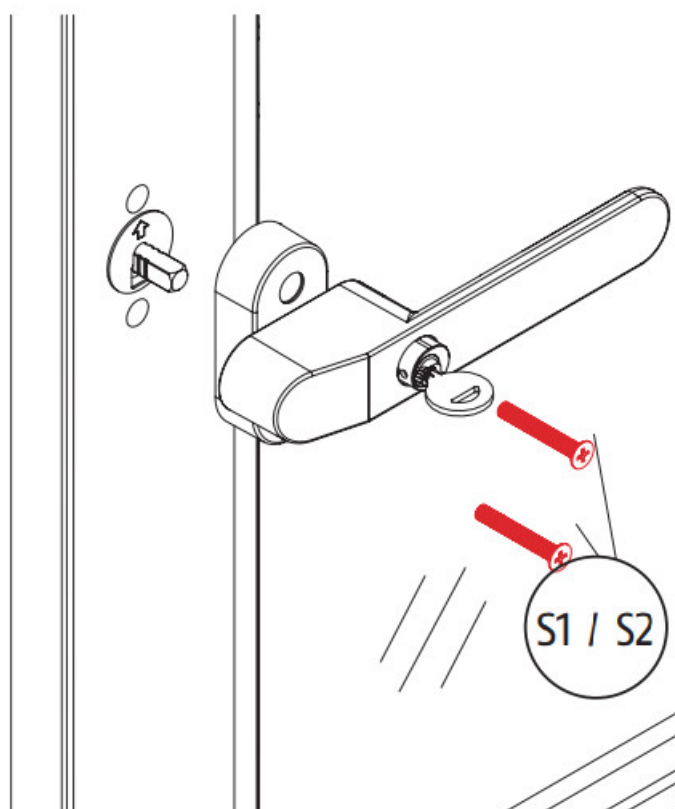
= \varnothing 10 mm, ~~C~~
< \varnothing 10 mm *



> \varnothing 10 mm, C

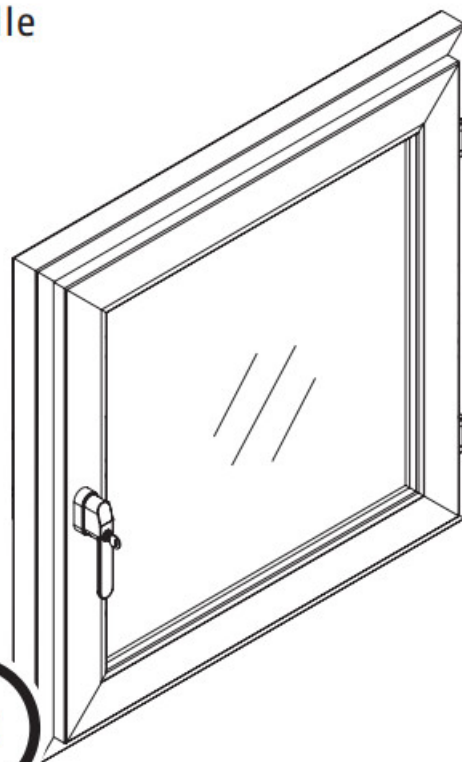
* \varnothing < 10 mm: drill out to \varnothing 10 mm approx. 6 mm deep

2.4

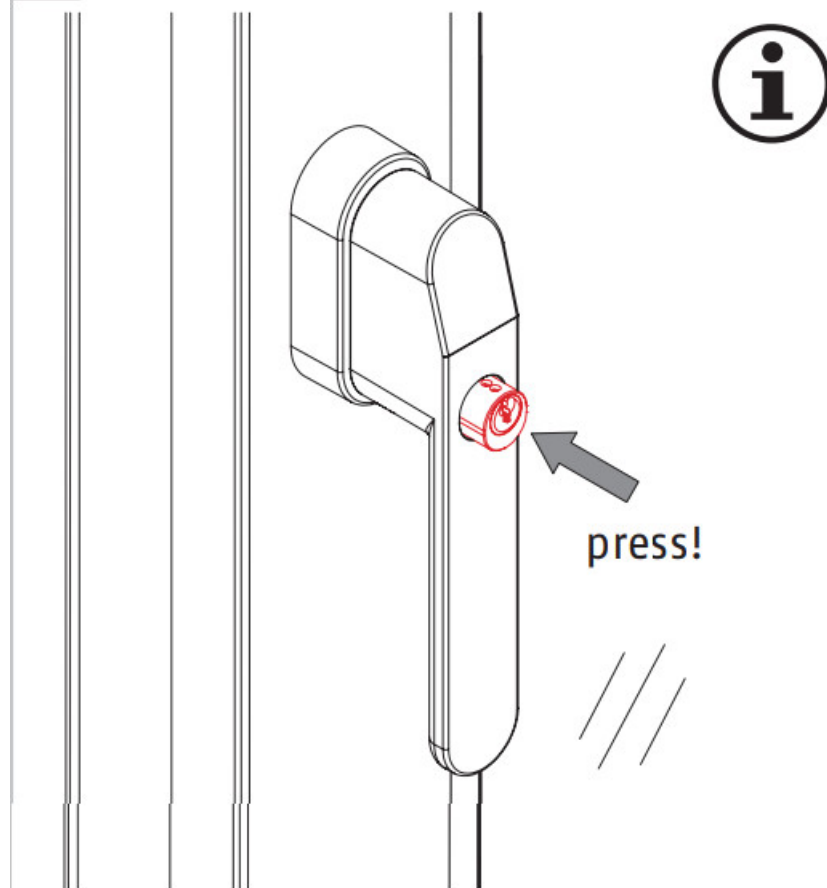


2.5

Close handle

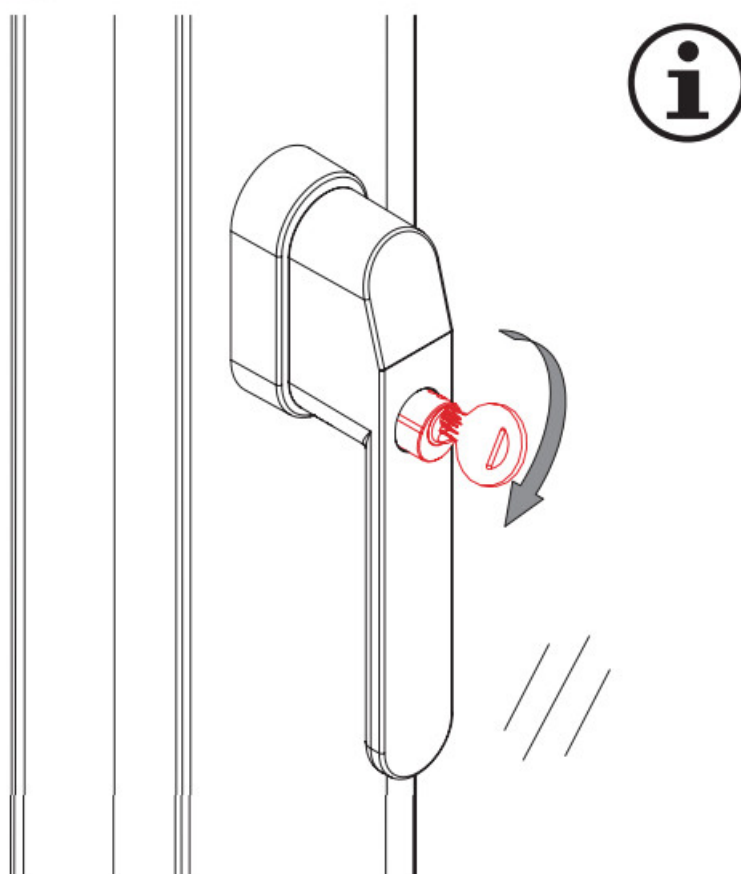


3.1

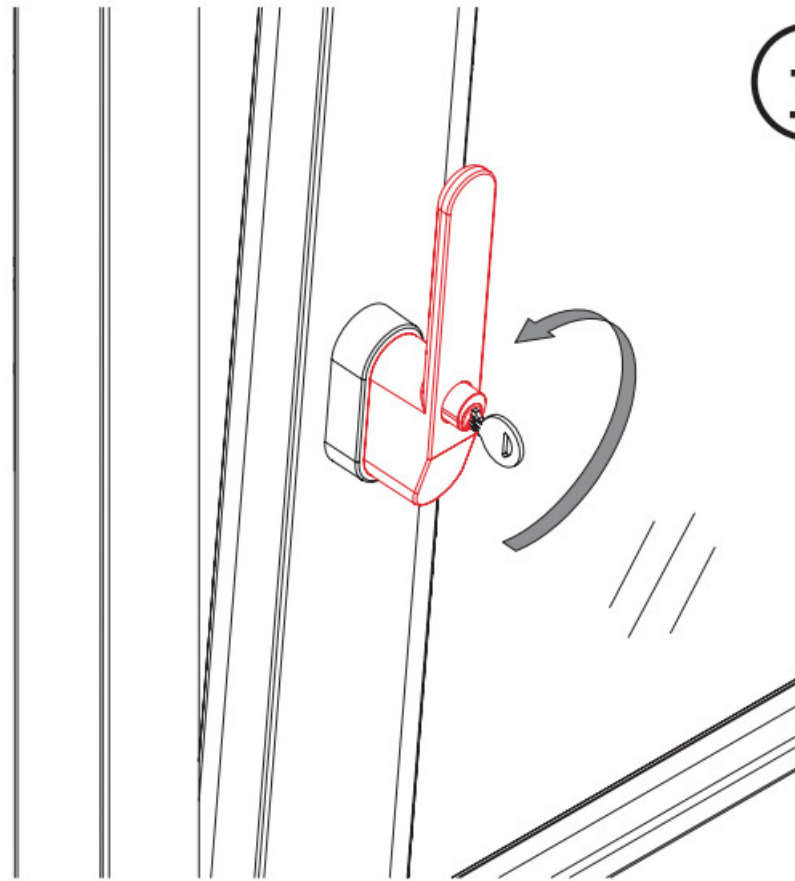


To close, press in cylinder

3.2



Open from the locking mechanism with key



Turn window handle up for tilt position

Disposal: At the end of its service life, dispose of the product in accordance with the applicable legal requirements. Please contact the local authority responsible for disposal if you have any queries. Dispose of the packaging according to type. Separate the cardboard, foil and plastic elements for recycling.

Warranty: ABUS products are designed, manufactured and tested in accordance with applicable regulations with great care. The warranty exclusively covers faults that are caused by material or manufacturing defects. If a material or manufacturing defect can be proven, the product will be repaired or replaced at the discretion of the warrantor. In such cases, the warranty ends with the termination of the original warranty period. Any further claims are expressly excluded. ABUS assumes no liability for defects or damage that has been caused by external influences (e.g. transport, external forces), improper use, normal wear and tear or non-compliance with this operating and installation instructions document. If a warranty claim is asserted, the product must be returned with the original receipt with date of purchase and a brief written description of the fault.

Subject to technical alterations. No liability for mistakes and printing errors.



© ABUS 2022 | ABUS August Rewicker Shone KG

D 58292 Wetter | Germany.

Tel.: +49 (0) 23 35 63 40

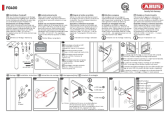
UK-Importer: ABUS (UK) Ltd.

Unit 8 Third Way Corner, Avon mouth

Bristol BS11 9HL, UK

Tel.: +44 117 204 70 00 | info@abus-uk.com

T390749 V1 | K22



[ABUS FG400 Lockable Window Handle](#) [pdf] Instruction Manual
FG400, FG400 Lockable Window Handle, Lockable Window Handle, Window Handle, Handle

References

- [UK.COM](#)

Manuals+