

ABUS DF88 Securing windows



ABUS DF88 Securing windows Instruction Manual

[Home](#) » [ABUS](#) » ABUS DF88 Securing windows Instruction Manual 

Contents

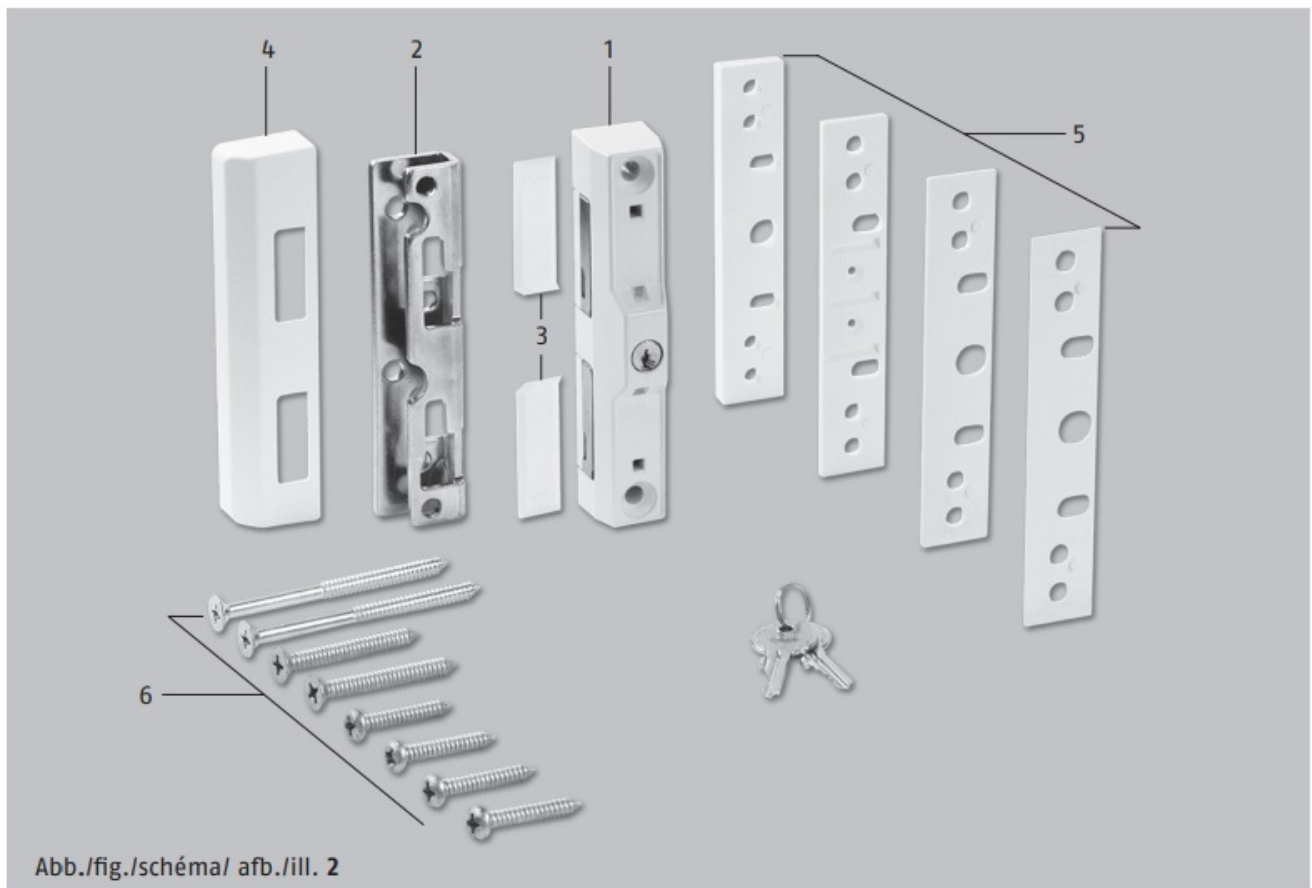
- [1 ABUS DF88 Securing windows](#)
- [2 General instructions](#)
- [3 Possible use](#)
- [4 Pack contents](#)
- [5 Installation tools](#)
- [6 Installation instructions](#)
- [7 Installation](#)
- [8 Operation](#)
- [9 Documents / Resources](#)
 - [9.1 References](#)
- [10 Related Posts](#)



ABUS DF88 Securing windows



These instructions are organized in the following sections:



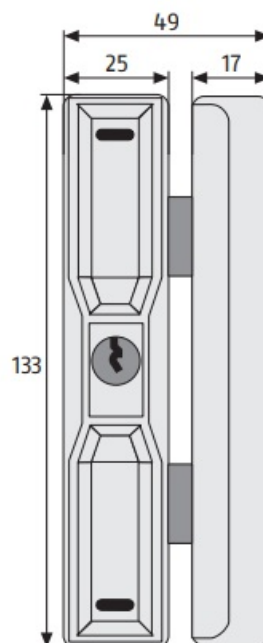
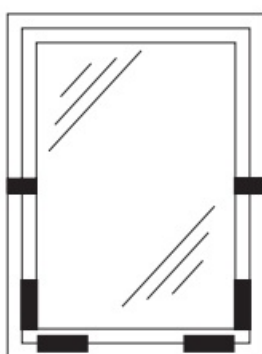
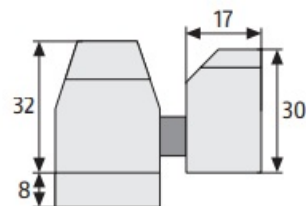
1. General instructions
2. Possible uses
3. Pack contents
4. Tools
5. Installation instructions
6. Operation

General instructions

DF88 offers additional protection from unauthorized intruders in your rooms. The lock is suitable for dormer windows made of wood, metal, and PVC where the lock body and locking case have to be fitted at an angle of 90° to each other (fig. 1). Some dormer windows are built like a normal window. In this case, FTS88 can be used.



Abb./
fig./
schéma/
afb./
ill. 1



Caution! Some dormer window types have a locked cleaning setting at 180°. After fitting DF88, this locked setting may be no longer possible.

Recommendation: Fit DF88 as low as possible to achieve a maximum turning angle. Optimum protection can be achieved by proceeding according to these installation and operation instructions. To prevent the risk of overtightening, the fastening screws should be screwed in using a suitable tool and tightened by hand. Only use ABUS fastening material. The manufacturer does not assume any liability for possible injuries or damages caused during installation and/or by incorrect handling! One entrance possibility of the whole object must be accessible with a key from the outside.

Possible use

- DF88 is suitable for dormer windows that open to the outside and which are hinged at the top or in the middle.
- DF88 is always mounted to the inside, with the locking case on the window casement and the lock case on the frame.
- From an inner frame width of approx. 50 cm, two DF88 should be fitted, on the right or left, on the side or bottom.
- When only one lock is fitted, it should be positioned on the right side of the window.

Pack contents

- 1 lock case
- 1 locking plate

- 2 cover caps lock case
- 1 cover locking plate
- 1 set shims for lock case 1 each 1, 2, 4, 8 mm
- Screws:
 - 2 each 6,3 x 100 mm
 - 2 each 6,3 x 60 mm
 - 4 each 5,5 x 38 mm

Installation tools

- Screwdriver
- Drill
- Saw, file for shortening the screws, possibly vice

Drilling table

For screws Ø	In wood and PVC without metal inlay drill bit Ø	in aluminum and PVC with metal inlay drill bit Ø
6,3 mm	4,5 mm	5,0 mm
5,5 mm	4,0 mm	4,5 mm

Installation instructions

Important instructions

- Before installation, please check the settings of the window. If necessary, readjust the fittings so that the window opens and closes perfectly.
- Also, check whether your window complies with the minimum dimensions shown in fig. 1.
- The depths of the drilled holes and screw lengths must be adjusted to the local conditions.
- Avoid the drill or screws from coming out at the back! Possibly work with a drill stopper or shorten the existing screws.
- When drilling, do not damage any moving parts, seals, or glass panes.

Abb./fig./schéma/afb./ill. 1

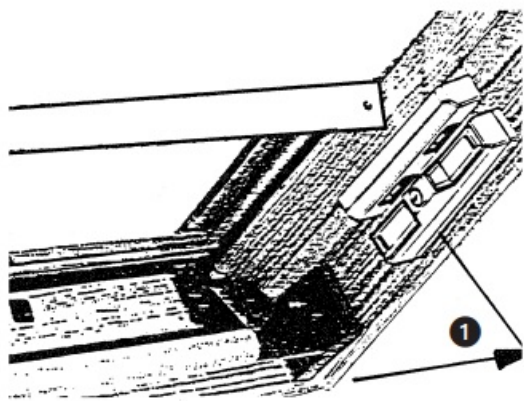
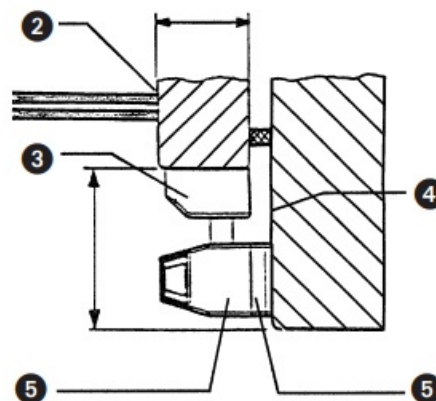


Abb./fig./schéma/afb./ill. 2



Installation

1. Fit the shims (5) under the lock case (1). The space from the casement to the soffit/frame corresponds to the shim height (see fig. 4).

Abb./fig./schéma/afb./ill. 3

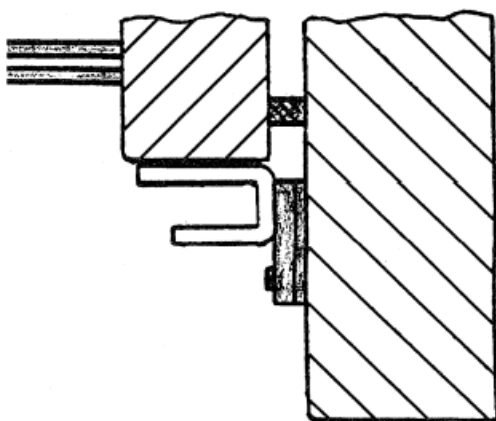
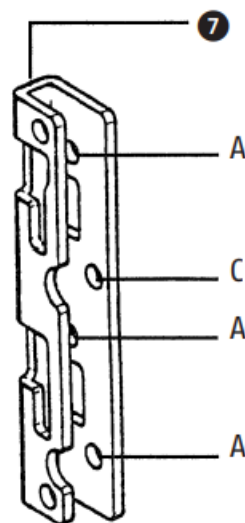
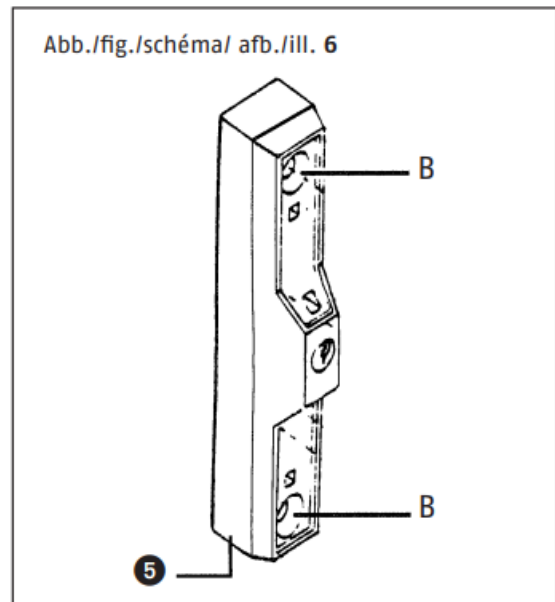
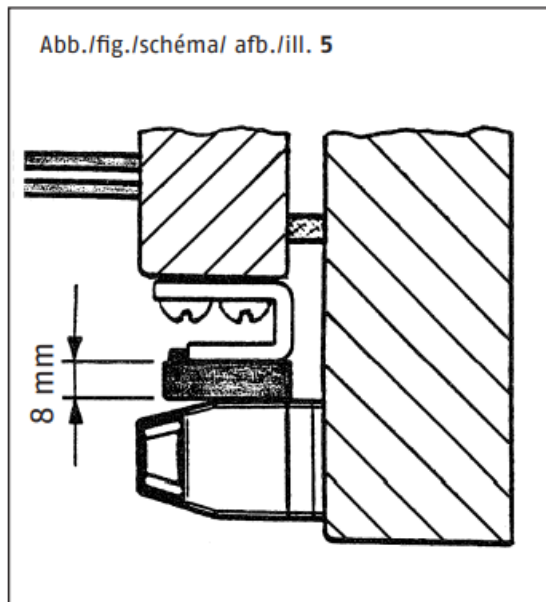


Abb./fig./schéma/afb./ill. 4



2. Unclip the plastic cover (4) from the locking plate (2) using a screwdriver.
3. Hold the locking plate (2) as close as possible to the opening side of the window (make sure the handle has room to move) with the long leg side flush on the window casement. Aid: previously defined shim package (5) (see fig. 5).



4. Mark and pre-drill holes A + C (see fig. 6) (see drilling table). Screw closing plate (2) using screws 5.5 x 38 mm.
5. Carefully push the cover plates (3) of the lock case (1) out from below. Fit shims (5) under the lock case (1) and hold centrally at the same height in parallel spacing of 8 mm to the locking plate (2). Aid: 8 mm shim (5) (see fig. 7).
6. Mark and pre-drill hole B (see drilling table). Screw the lock case (1) on including shims (5) using screws 6.3 x 60 mm or 6.3 x 100 mm.

Check function:

Bolt must run freely when closing the window.

7. Then press on the cover (4) and cover plates (3) onto the locking plate (2) or lock case (1).

Operation

DF88 is locked and unlocked with the key.

1. = Inside frame width
2. = Window
3. = Schließkasten
4. = Window soffit
5. = Lock case
6. = Spacers
7. = Locking plate

Subject to technical alterations. No liability for mistakes and printing errors. ©ABUS | D 58292 Wetter | Germany



[ABUS DF88 Securing windows](#) [pdf] Instruction Manual DF88 Securing windows, DF88, Securing windows, windows

References

-  [Manual-Hub.com - Free PDF manuals!](#)
- [User Manual](#)

[Manuals+](#), [Privacy Policy](#)

This website is an independent publication and is neither affiliated with nor endorsed by any of the trademark owners. The "Bluetooth®" word mark and logos are registered trademarks owned by Bluetooth SIG, Inc. The "Wi-Fi®" word mark and logos are registered trademarks owned by the Wi-Fi Alliance. Any use of these marks on this website does not imply any affiliation with or endorsement.