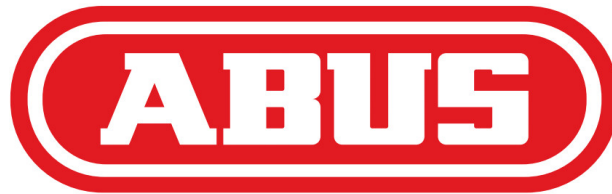




ABUS Bicycle Security Alarm Box Instruction Manual

[Home](#) » [ABUS](#) » ABUS Bicycle Security Alarm Box Instruction Manual 



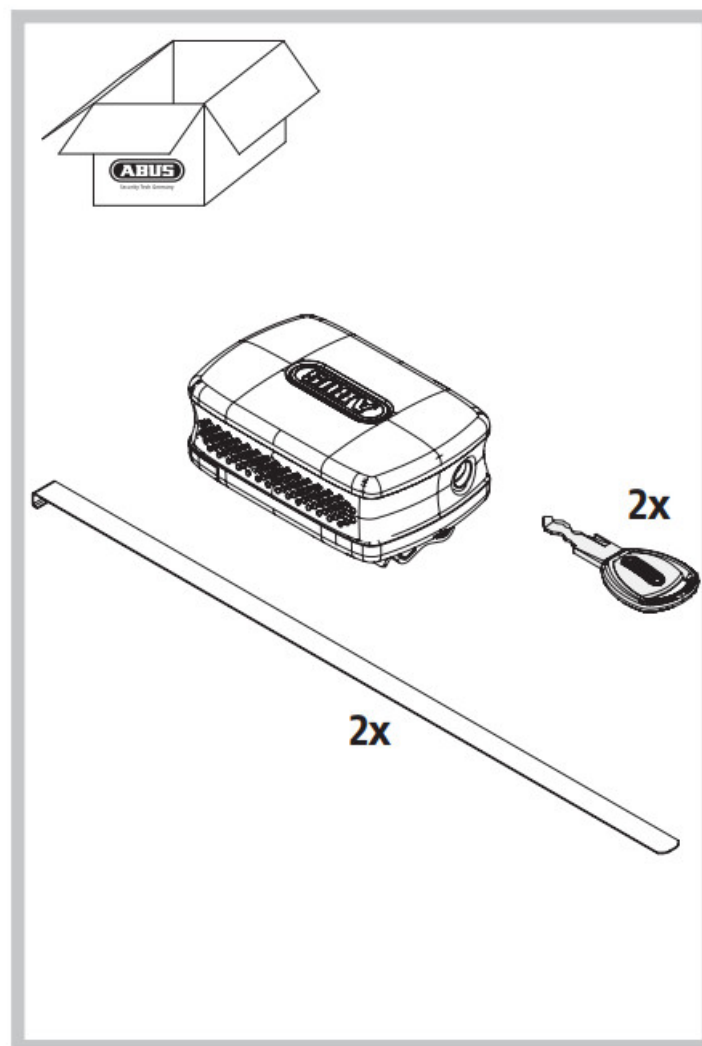
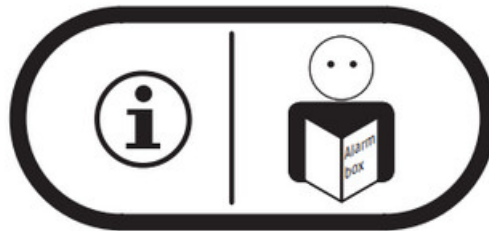
Security Tech Germany
Bicycle Security Alarm Box
Instruction Manual



Contents

- 1 Bicycle Security Alarm Box
- 2 Initial commissioning
- 3 Battery replacement
- 4 Battery instructions
- 5 Warranty
- 6 Documents / Resources

Bicycle Security Alarm Box

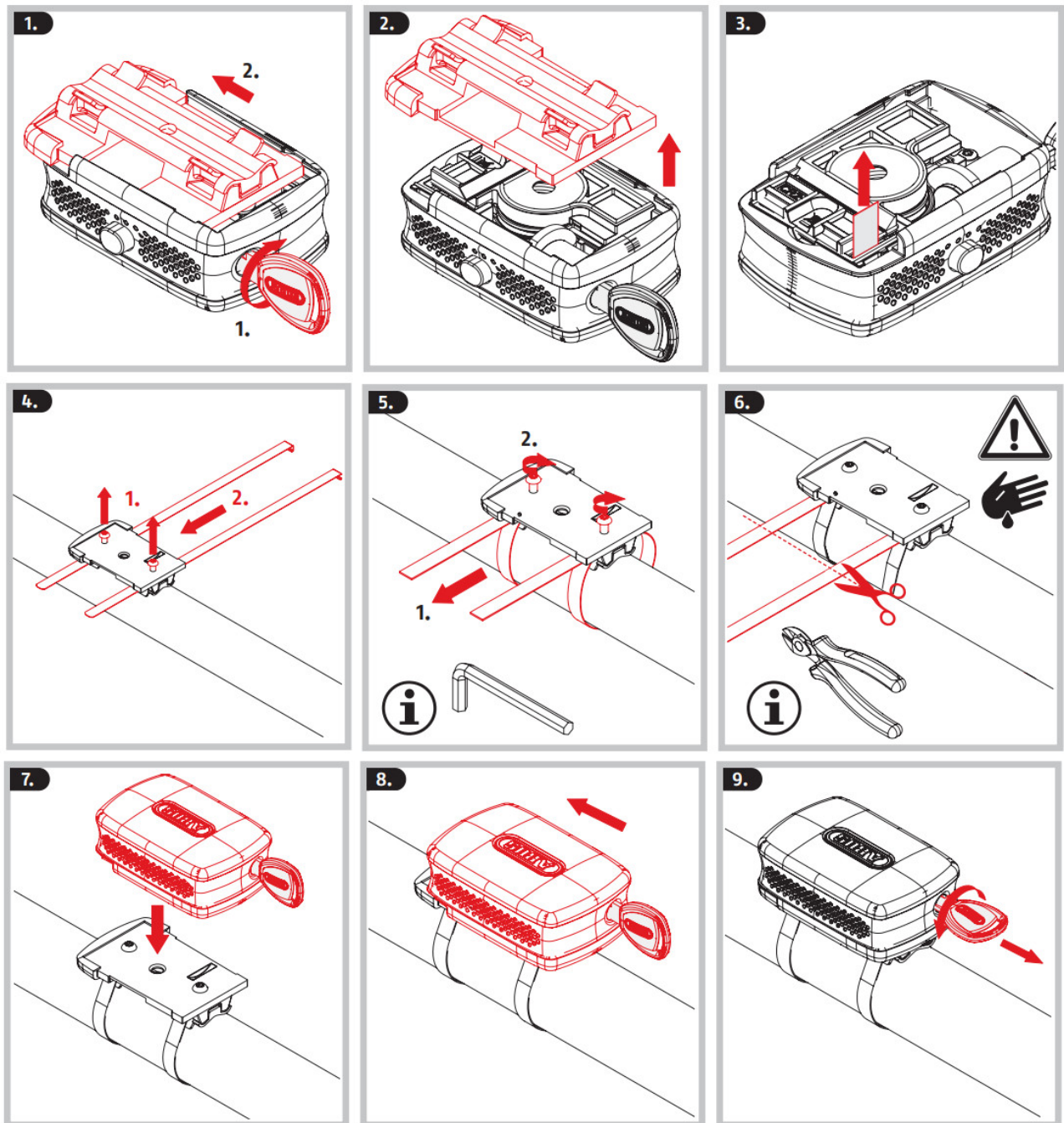


Icon explanation

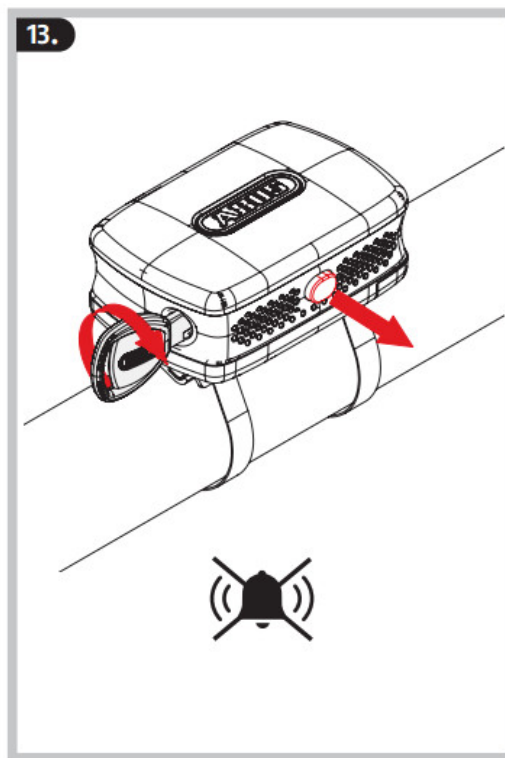
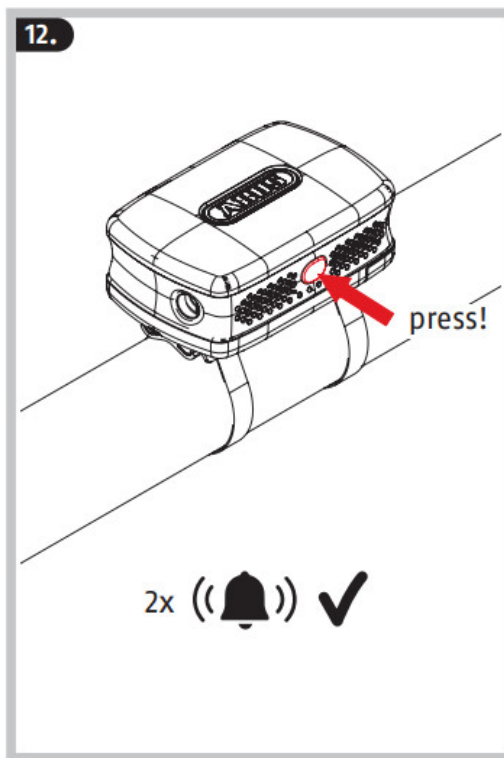
⚠ Caution!

ⓘ Further fitting / using details

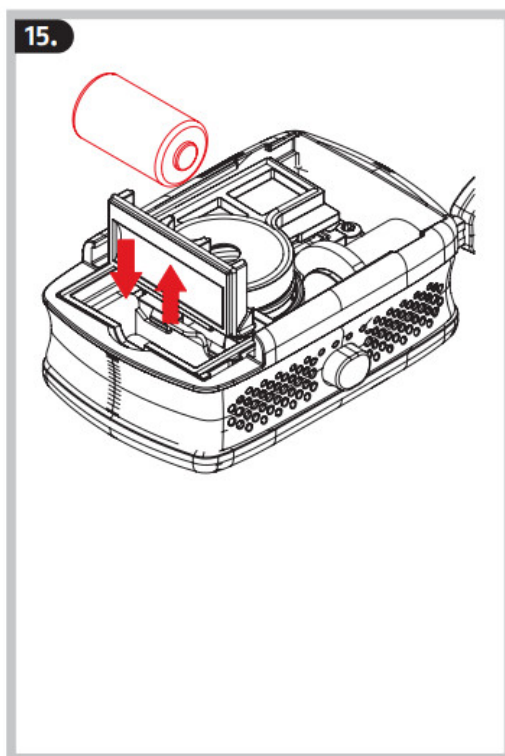
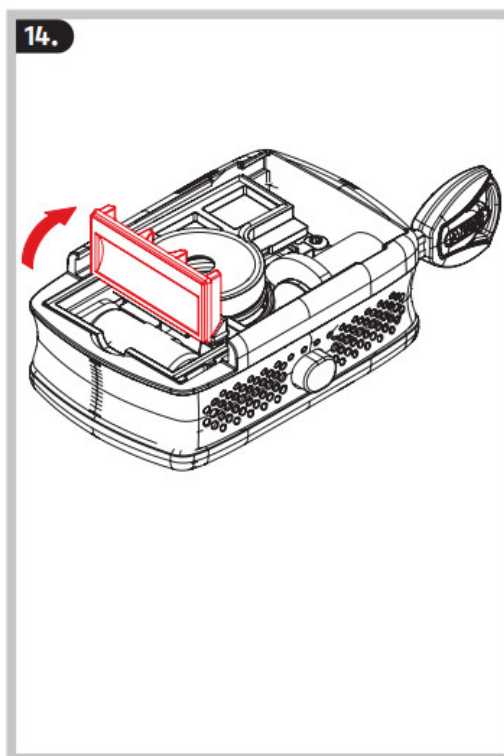
Initial commissioning



Activate / Deactivate



Battery replacement



Battery instructions

Batteries must be kept out of reach of children. Children can put batteries in their mouths and choke. This can cause serious injury. Seek immediate medical attention in this event!

Contact with expired or damaged batteries may cause chemical burns! In these cases, use suitable protective gloves and clean the battery compartment with a dry cloth.

Batteries must not be dismantled, pierced or otherwise damaged, be short-circuited, be heated or thrown into an open fire (risk of explosion!). Do not dispose of batteries in domestic waste.

Disposal

Dispose of the device in accordance with EU Directive 2002/96/EC – WEEE (Waste Electrical and Electronic

Equipment). If you have any questions, please contact the municipal authority responsible for disposal. You can get information on collection points for waste equipment from your local authority, from local waste disposal companies or your dealer.

Warranty

ABUS products are designed, manufactured and tested in accordance with applicable regulations with great care. The warranty exclusively covers faults that are caused by material or manufacturing defects. If a material or manufacturing defect can be proven, the product will be repaired or replaced at the discretion of the warrantor. In such cases, the warranty ends with the termination of the original warranty period. Any further claims are expressly excluded. ABUS assumes no liability for defects or damage that has been caused by external influences (e.g. transport, external forces), improper use, normal wear and tear or non-compliance with this operating and installation instructions document. If a warranty claim is asserted, the product must be returned with the original receipt with date of purchase and a brief written description of the fault.



© ABUS 2019

ABUS August Bremicker Söhne KG

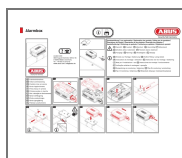
D 58292 Wetter | Germany.

Tel.: +49 (0) 23 35 63 40

www.abus.com | info@abus.de

V1 | H19

Documents / Resources



[ABUS Bicycle Security Alarm Box](#) [pdf] Instruction Manual
Bicycle Security Alarm Box, Bicycle, Security Alarm Box, Alarm Box