



ABUS Alarmbox RC TwinSet Instruction Manual

[Home](#) » [ABUS](#) » ABUS Alarmbox RC TwinSet Instruction Manual 

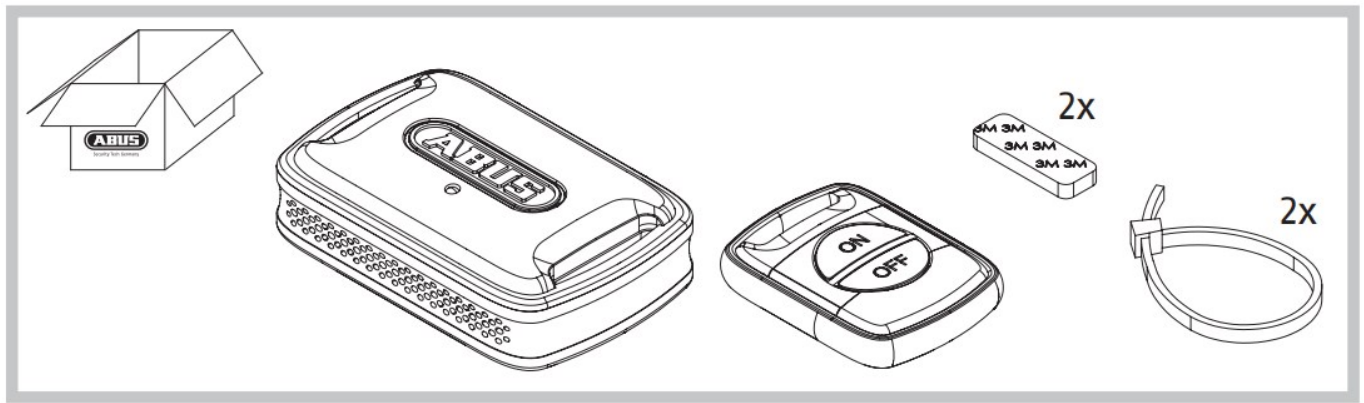
ABUS Alarmbox RC TwinSet Instruction Manual



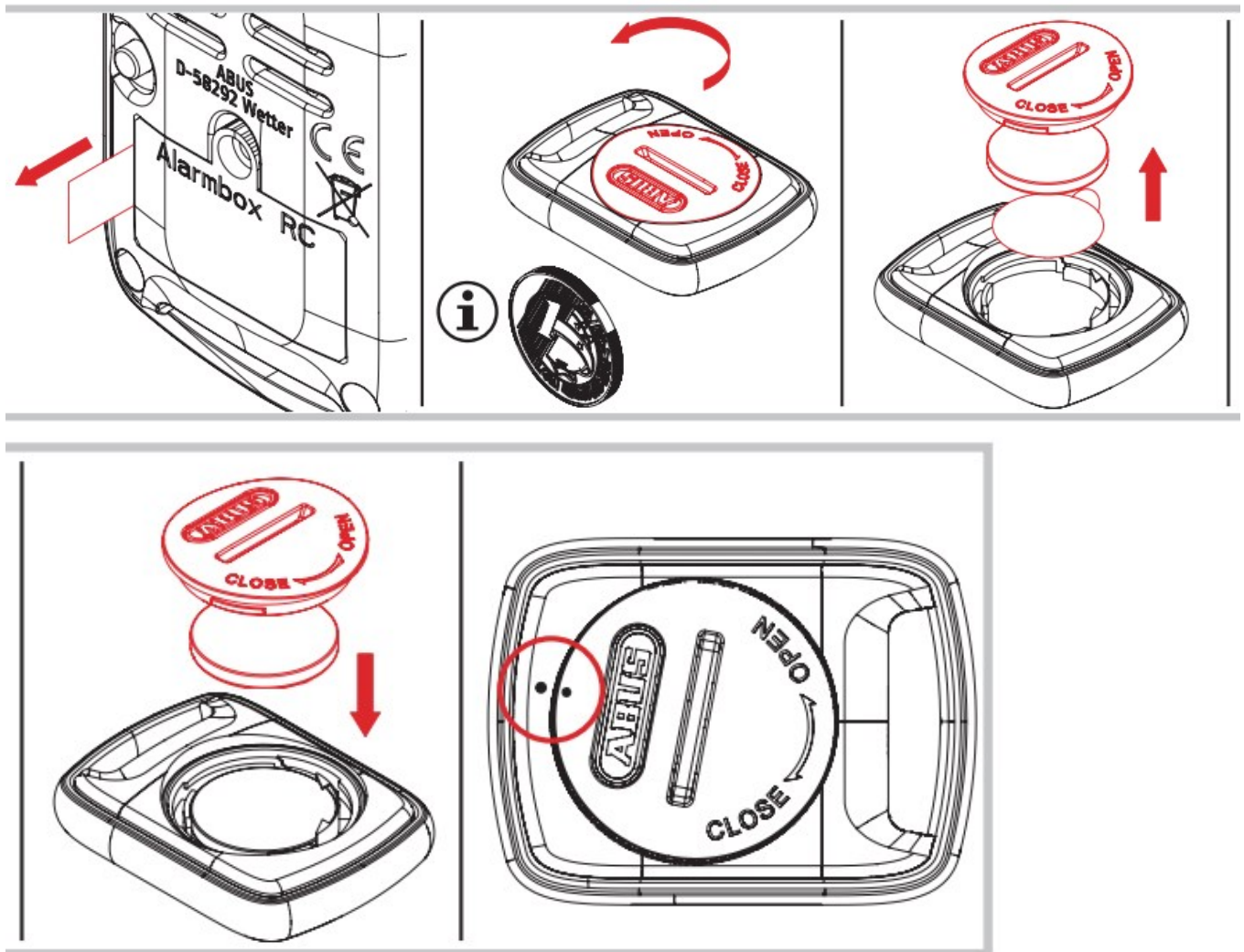
Contents

- [1 What's in the Box](#)
- [2 Initial commissioning](#)
- [3 Pairing](#)
- [4 Battery replacement](#)
- [5 Unpair](#)
- [6 Safety instruction](#)
 - [6.1 Battery instructions](#)
- [7 EU Declaration of Conformity](#)
 - [7.1 UK Declaration of Conformity](#)
- [8 Disposal](#)
- [9 Warranty](#)
- [10 Information regarding FCC certification for USA](#)
- [11 Support](#)
- [12 Documents / Resources](#)
 - [12.1 References](#)
- [13 Related Posts](#)

What's in the Box

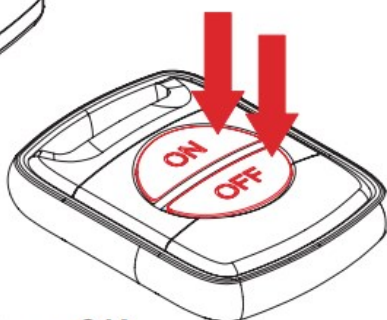
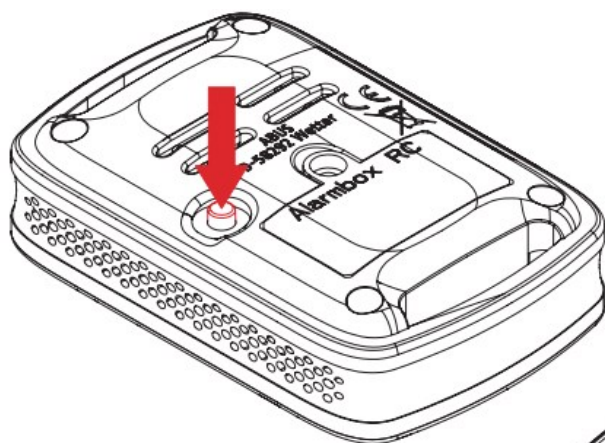


Initial commissioning



Pairing

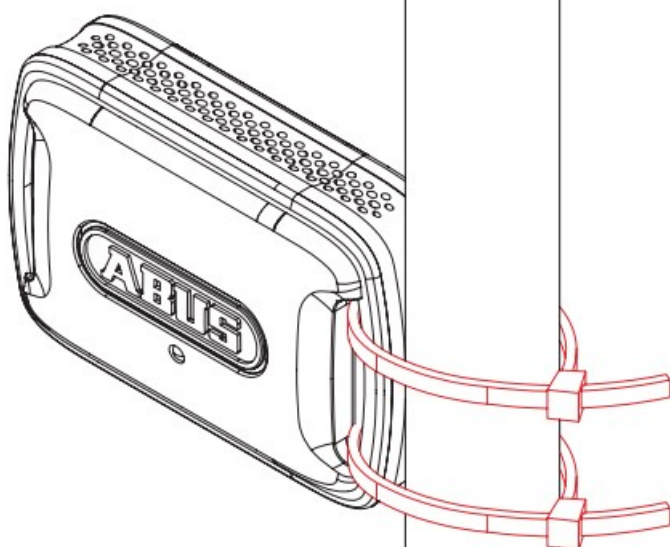
To pair the Alarm box and remote control, press reset button on the Alarm box and both buttons on the remote control simultaneously.



3x ((🔔)) + 1x ((🔔)) = OK



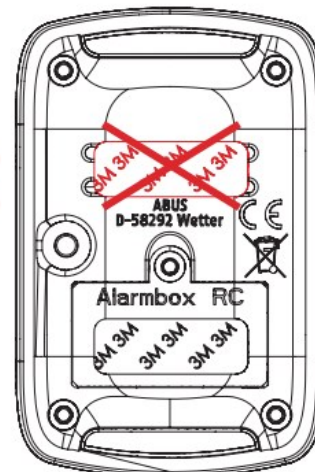
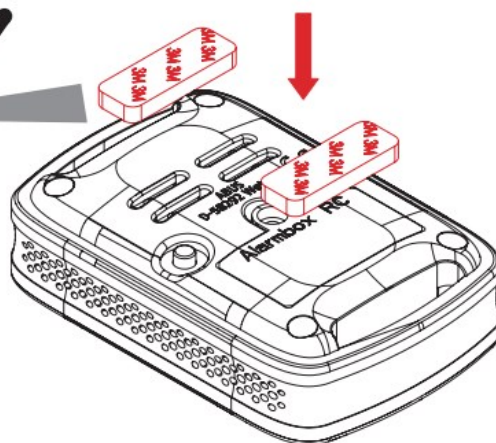
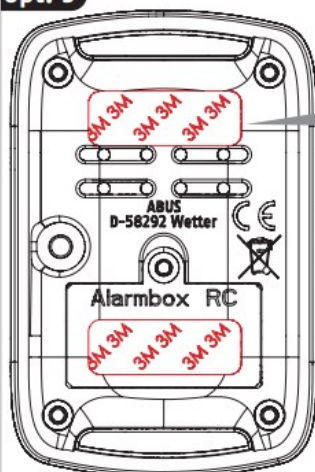
Opt. 1



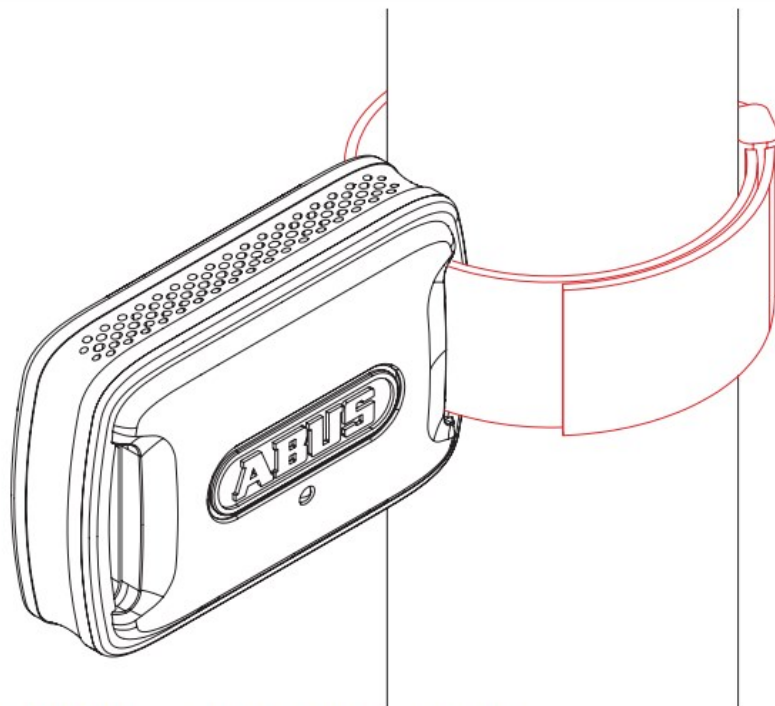
Opt. 2



Opt. 3

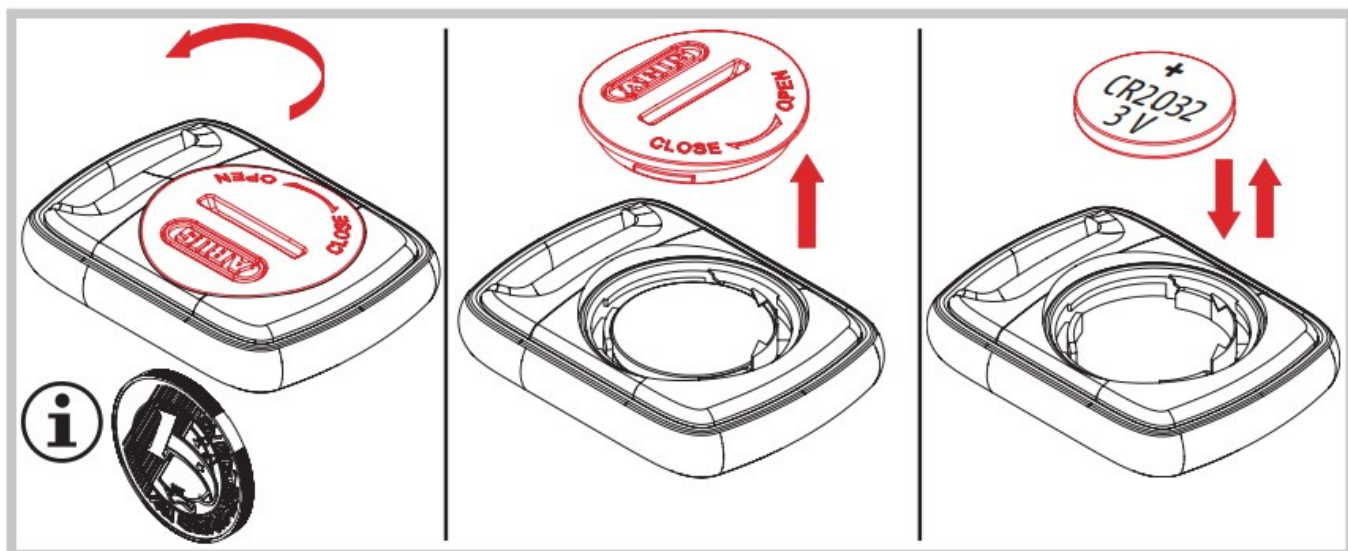
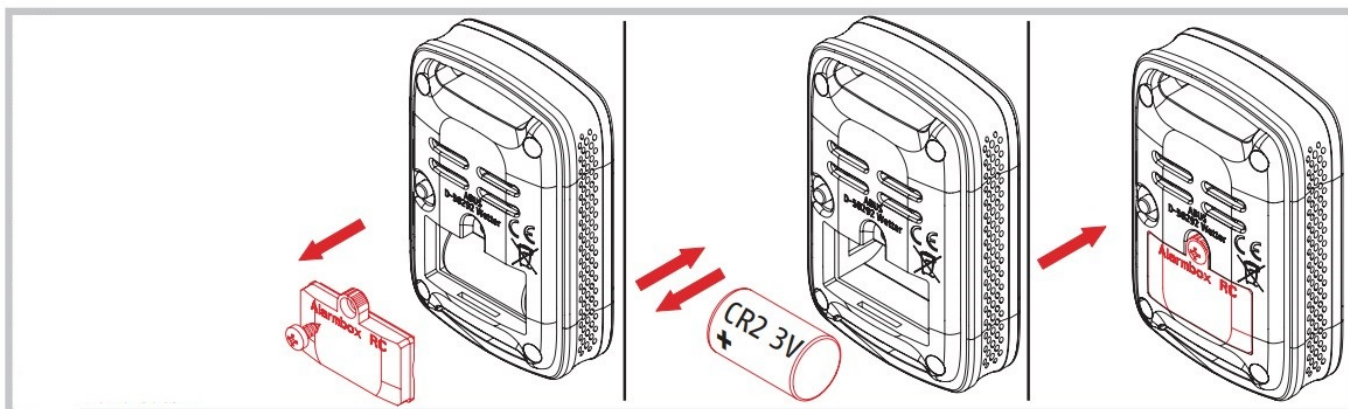


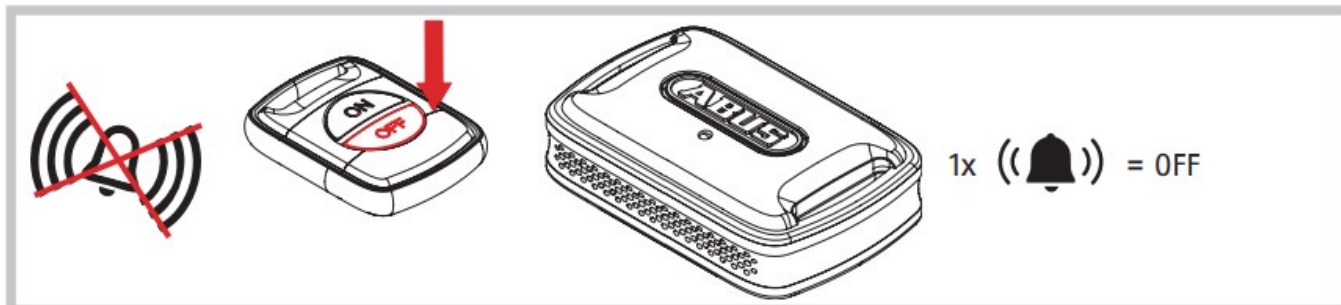
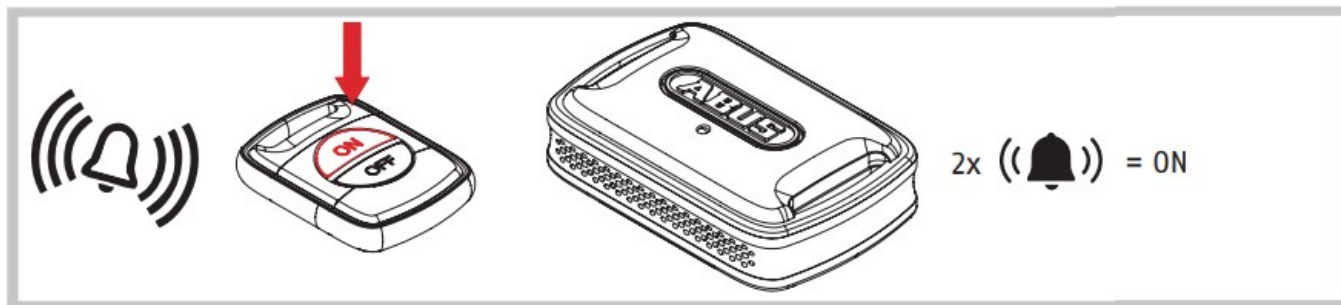
Opt. 4



ABUS 37760 Klettband ST 6000 - 28,5 cm
ABUS 44262 Klettband ST 6000 - 30,5 cm

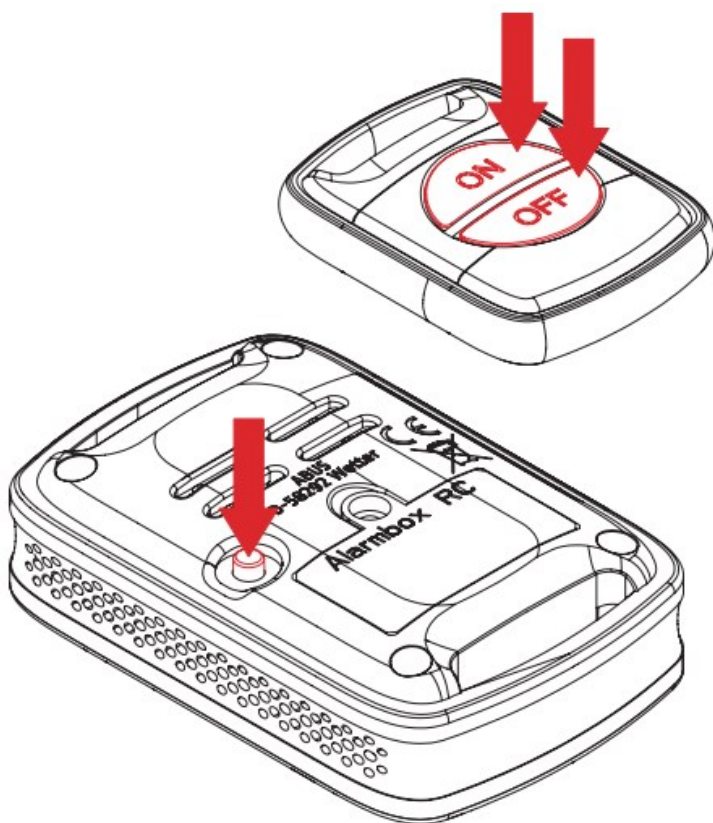
Battery replacement





Unpair

To un pair, switch off the Alarm box with the remote control. Press reset button on the Alarm box until 3 beeps sound. Press all 3 buttons together for 6 seconds and release when the beep sounds again.



Safety instruction

Please read and follow these safety instructions.

Non-observance of these instructions could lead to fire, injury to persons and/or device damage! Keep packaging material away from children: Danger of suffocation! The product may only be used for its intended purpose. Any modification to the product is prohibited. Radio frequency: 868.0 MHz – 868.6 MHz, maximum transmission power: 84.8 dBμV/m @ 3m.

Battery instructions

This product contains two 3 V lithium batteries (CR2 and CR2032).

Keep batteries out of the reach of children. Children may put batteries in their mouths and swallow them. This can cause serious harm to their health. Seek immediate medical attention in this event!

Batteries must be inserted with the correct polarity (+ and -). Empty batteries must be removed or replaced immediately. The battery terminals must not be short-circuited. Risk of burns from contact with leaking or damaged batteries! In these cases, use suitable protective gloves and clean the battery compartment with a dry cloth. Batteries must not be dismantled, punctured, damaged, short-circuited, heated, charged or thrown into an open fire (risk of explosion!). Do not use or store the product in areas where the temperature could reach below -20°C or above +40°C. Do not expose the product to direct sunlight for long periods of time.

EU Declaration of Conformity

ABUS August Bremicker Söhne KG hereby declares that the radio equipment type Alarmbox RC is in compliance with Directives 2014/53/EU and 2011/65/EU. The full text of the EU declaration of conformity is available at the following internet address: docs.abus.com

UK Declaration of Conformity

Hereby, ABUS August Bremicker Söhne KG declares that the radio equipment type Alarmbox RC is in compliance with the Radio Equipment Regulations 2017 and the Restriction of the Use of Certain Hazardous Substances in Electrical and Electronic Equipment Regulations 2012. The full text of the UK declaration of conformity is available at the following internet address: docs.abus.com

Disposal



■ This product contains valuable raw materials. At the end of its service life, dispose of the product in accordance with the applicable legal requirements. Electrical appliances, rechargeable batteries and batteries must not be disposed of with household waste.

Disposal must be carried out in accordance with Directive 2012/19/

EU on waste electrical and electronic equipment (WEEE), or Directive 2006/66/EC on batteries and accumulators and waste batteries and accumulators. Batteries must be removed from electrical appliances and disposed of separately before disposal. Dispose of the packaging according to type. Separate the cardboard, foil and plastic elements for recycling. Please contact the local authority responsible for disposal if you have any queries. You can obtain information on collection points for your old appliances, for example, from the local municipal or city administration, the local waste disposal companies, or your specialist dealer.

Warranty

ABUS products are designed, manufactured and tested in accordance with applicable regulations with great care. The warranty exclusively covers faults that are caused by material or manufacturing defects. If a material or manufacturing defect can be proven, the product will be repaired or replaced at the discretion of the warrantor. In such cases, the warranty ends with the termination of the original warranty period. Any further claims are expressly excluded. ABUS assumes no liability for defects or damage that has been caused by external influences (e.g. transport, external forces), improper use, normal wear and tear or non-compliance with this operating and installation instructions document. If a warranty claim is asserted, the product must be returned with the original receipt with date of purchase and a brief written description of the fault.

Information regarding FCC certification for USA

Warning: Changes or modifications not expressly approved by the party responsible for compliance could void the user's authority to operate the equipment.

NOTE: This equipment has been tested and found to comply with the limits for a Class B digital device, pursuant to part 15 of the FCC Rules. These limits are designed to provide reasonable protection against harmful interference in a residential installation. This equipment generates, uses and can radiate radio frequency energy and, if not installed and used in accordance with the instructions, may cause harmful interference to radio communications. However, there is no guarantee that interference will not occur in a particular installation. If this equipment does cause harmful interference to radio or television reception, which can be determined by turning the equipment off and on, the user is encouraged to try to correct the interference by one or more of the following measures:

- Reorient or relocate the receiving antenna.
- Increase the separation between the equipment and receiver.
- Connect the equipment into an outlet on a circuit different from that to which the receiver is connected.
- Consult the dealer or an experienced radio/TV technician for help.

This device complies with Part 15 of the FCC Rules. Operation is subject to the following two conditions: (1) This device may not cause harmful interference, and (2) this device must accept any interference received, including interference that may cause undesired operation.

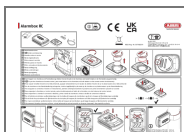
ABUS Mobile Security, Inc.
1765 N. Elston Avenue – Suite 204
Chicago, IL 60642
Phone: 312-640-1111

Support



© ABUS 2022
ABUS August Bremicker Söhne KG
D 58292 Wetter
Germany.
Tel.: +49 (0) 23 35 63 40
www.abus.com
info@abus.de

Documents / Resources



[ABUS Alarmbox RC TwinSet](#) [pdf] Instruction Manual
IN2TX73, 2A3VOIN2TX73, Alarmbox RC TwinSet, Alarmbox RC, TwinSet, Alarmbox, Alarmbox TwinSet, RC TwinSet

References

- [Declarations of conformity - Service - ABUS](#)

