



# ABLEWE KVM-Switches USB and HDMI Switch User Manual

[Home](#) » [ABLEWE KVM-Switches USB and HDMI Switch User Manual](#) » **ABLEWE KVM-Switches USB and HDMI Switch User Manual** 

## Contents

- [1 ABLEWE KVM-Switches USB and HDMI Switch](#)
- [2 I. Applicable Models:](#)
- [3 II. Product Features:](#)
- [4 III. Important Reminder before Set-up:](#)
- [5 IV. How to Set Up](#)
- [6 V. Connection Diagram](#)
- [7 VI. Dual graphics card display settings](#)
- [8 VII. Switch Modes:](#)
- [9 VIII. Hotkey Setting:](#)
- [10 IX. Keyboard Hot-key Operation:](#)
- [11 X. Sound Settings](#)
- [12 XI.Box Contents:](#)
- [13 XII. FAQ & Trouble Shooting](#)
- [14 XIII. Customer Care](#)
- [15 FAQ's](#)
- [16 Video – Product Introduction](#)
- [17 Related Posts](#)

**ABLEWE**

**ABLEWE KVM-Switches USB and HDMI Switch**



## I. Applicable Models:

- Dual HDMI KVM Switch 2 Port
- Dual HDMI KVM Switch 4 Port
- Dual VGA KVM Switch 2 Port
- Dual VGA KVM Switch 4 Port

These models are designed to control up to 2 or 4 multi-graphics card dual-output computers, laptops, and other applicable devices from one set of keyboards, a mouse, and 2 monitors for extended or duplicated display. The mouse and keyboard can be used alternately between two monitors, operating two interface files respectively. It is suitable for high-resolution display and monitoring, multimedia design, multimedia post-production, and video editing, etc. It provides users with great convenience. There are two kinds of dual KVM switches for your selection in this series including dual HDMI KVM switch, and dual VGA KVM switch. Please refer to the correspondent product type for product features and specifications in this manual.

## II. Product Features:

- One USB console controls 2/4 multi-graphics card dual-output computer and other devices.
- Support extended or duplicated display depending on a computer setting.
- Support Resolution:
  - **For Dual HDMI KVM Switch:** 480i, 480p, 720p, 1080i, 1080p, and 4K@30Hz.
  - **For Dual VGA KVM Switch:** 2048\*1536@450MHz
- **Multiplatform support:** Windows 10/7/2000/XP/Vista, Linux, and Mac;
- Support hot plug & play
- Support HDCP and auto EDID for Dual HDMI KVM Switch
- Support DDC2 for Dual VGA KVM Switch
- Support auto detection, if one computer is powered off, the switch will automatically switch to the next powered-on computer (The default is in the closed state if you want to open it . Please read the below-setting operation instructions).
- With memory function in case of power-down
- Support independent mouse keyboard switch, even without USB signal input, you can switch the input device easily by keyboard or mouse.

- Auto Scan Mode for monitoring all computers /DVR/NVR
- With USB2.0 Hub and separate audio & microphone output

### III. Important Reminder before Set-up:

A dual monitor display requires dual video inputs. Most computers and laptops only have one HDMI output + VGA/DVI /DP output or USB C output, make sure you have VGA/DVI /DP to HDMI adapter or USB C Dock ready before setup, you may need multiple adapters for multiple computer connections. Here are some examples:

- Dual HDMI KVM Switches 2 and 4 Port:



- Dual VGA KVM Switches 2 and 4 Port:



- USB-C (Type C) Laptops:



#### Note:

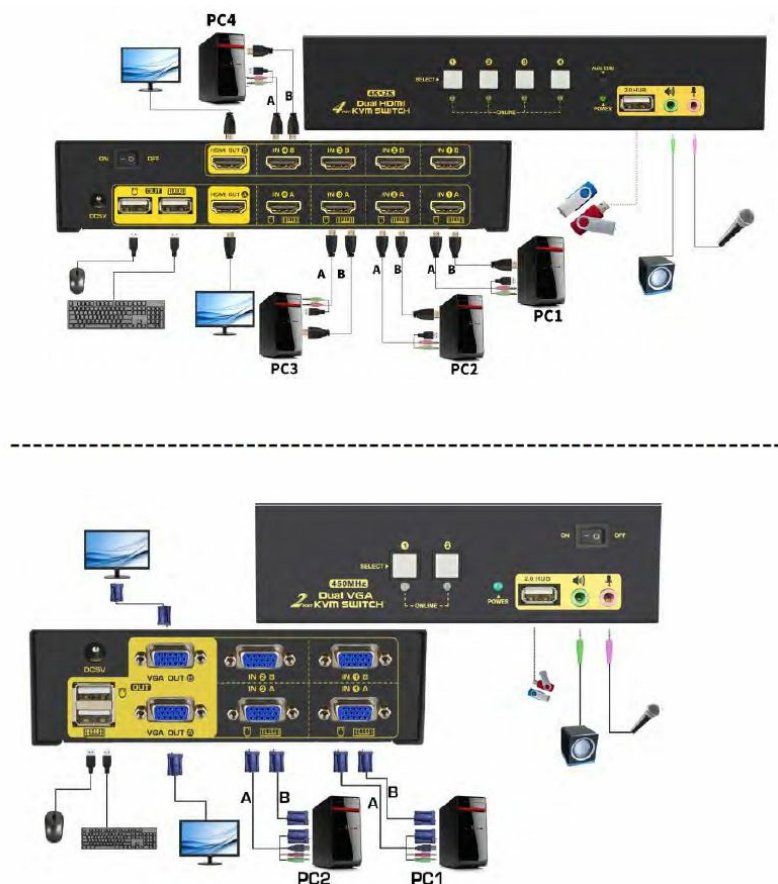
1. If VGA to HDMI adapter is needed, make sure it has built-in chips and a separate power supply. If a USB C Dock has dual video outputs, make sure it supports ts extended display (some only support ts duplicated display).
2. Outsourced adapters or docks are beyond our control, make sure you get those that would work with our KVM switches.

## IV. How to Set Up

1. Power of fall devices ;
2. Connect Cable A from your computer to IN 1 A of the Switch;
3. Connect Cable B from your computer to IN 1 B of the Switch (If an adapter is needed, please connect your adapter with Cable B ;
4. Repeat steps 2 & 3 to connect other input devices to correspondent KVM ports;
5. Plug your mouse and keyboard into the corresponding USB mouse and keyboard port on the back panel; for gaming or mechanical keyboard, please plug them into the USB 2.0 HUB on the front panel if they did not work well on the USB keyboard port.
6. Connect your Moni tors to HDMI OUT 1 & 2; if your monitor has both HDMI2.0 input and HDMI1.4 Input (1080P/4K@40Hz), please plug in the HDMI1.4 Input.
7. Plug in your speaker or microphone if needed;
8. Power on the switch and boot all devices;
9. Set computer display modes to extended display/duplicated display as needed.


**Note:** The monitors take around 20 seconds to display at first set-up, later on, it only takes around 2-3 seconds to display upon switching.

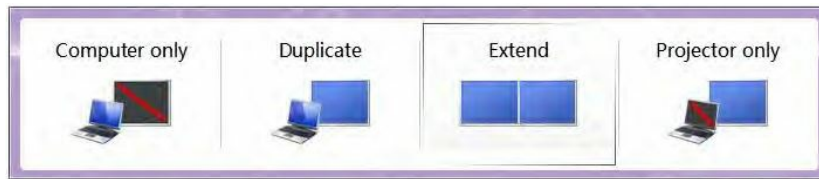
## V. Connection Diagram



## VI. Dual graphics card display settings



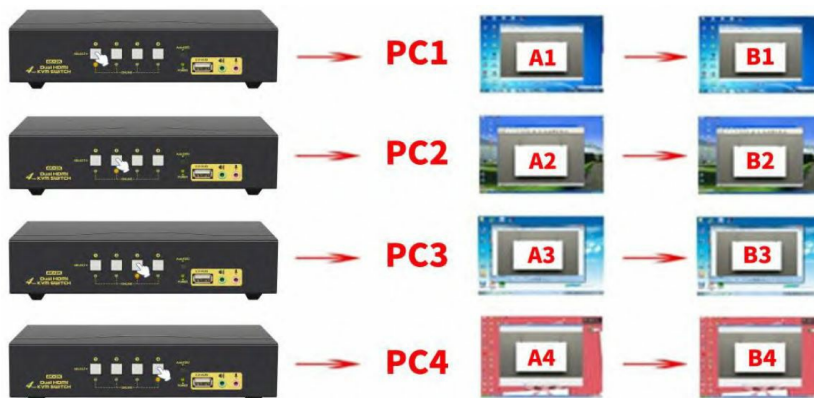
Take win7 as an example: hold down the keyboard windows + P, as shown in the figure  , a dialog will pop up as below.



Select Duplicate or Extend, then the two monitors can be displayed at the same time per the selected display mode.

## VII. Switch Modes:

- **Button Switch:** Switch to any port by buttons on the front panel.



- **Click mouse Switch:**

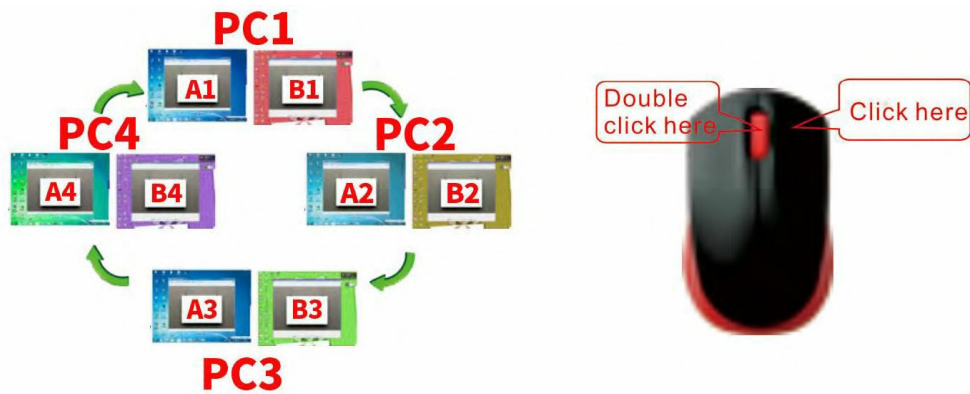
2 port dual KVM switch: Double click the mouse middle roller for circular switching (within 1 second)



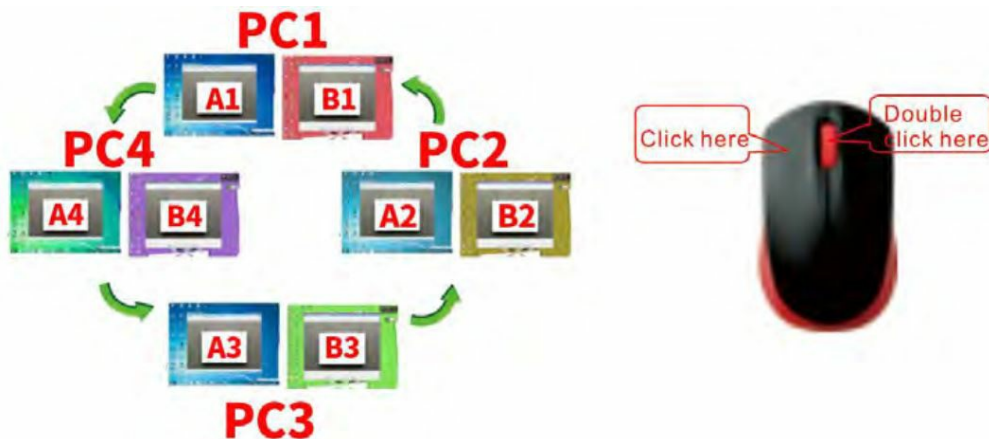
### 4 port dual KVM switch:

- Double-click the middle roller of the mouse, and then press the right mouse button to switch to the next port.





b. Double-click the middle roller of the mouse, then press the left mouse button to switch to the previous port.



- Keyboard Hot-key Switch: Double click the right Ctrl + Port Number + Enter

## VIII. Hotkey Setting:

The default hotkey is the right Ctrl (the Ctrl key on the right side of the keyboard). If using the right Ctrl conflicts with another hot-key, the hot-key can be set to Num lock or Scroll Lock .

For example: Double click the right Ctrl + Num lock + Enter , and The hot-key changes to Num lock ; double click the right Ctrl + Scroll Lock + Enter , and The hot-key changes to Scroll Lock key. If the hotkey is set as Scroll Lock , and you want to set the hotkey as the left Ctrl key, then double click the Scroll Lock +the left Ctrl + Enter , then the hot-key changes to the left Ctrl .

### Hotkey Change Setting:

Double click the right Ctrl + Num lock + Enter	Hotkey change to Num lock
Double click the right Ctrl +left Ctrl + Enter	Hotkey change to the left Ctrl
Double click the right Ctrl + Scroll Lock + Enter	Hotkey change to Scroll Lock
If the hotkey is changed to Scroll Lock You want to change it to the left Ctrl Then double click Scroll Lock +the left Ctrl + Enter	

## IX. Keyboard Hot-key Operation:

Double click the right Ctrl + N+ Enter	The KVM can switch to the device you choose.
Double click the right Ctrl + S + Enter	Turn on/off the auto-scan function, or you can press the scan button on front panel
Double click the right Ctrl + S +N+ Enter	Set the scan interval Can set to 8-999 seconds The system defaults to 8 seconds
Double click the right Ctrl + B + Enter	Turn on/off the beeping sound
Double click the right Ctrl + T + Enter	Turn on/off the detection function (default is off)
Double click the right Ctrl + R + Enter	Reset the KVM System to solve the keyboard and mouse freeze.

### Notes:

1. The “N” stands for the computer’s Port ID number (1, 2, 3, 4) or auto scan interval time of 8 to 999 seconds.
2. When the auto scan function is activated, you can press any key on the KVM front panel, the auto scan function turns off automatically.
3. The keyboard and mouse must be plugged in the positions marked with the keyboard and mouse icon, so keyboard hotkeys and mouse click switching will be effective.
4. For wireless mouse and keyboard; Please plug the Bluetooth receiver into the USB keyboard port for better performance.
5. For some high-speed, optical, multi-functional, gaming, or mechanical keyboard or mouse, please plug into the USB 2.0 port on the front panel, this connection does not support hotkey or mouse switching.

## X. Sound Settings

### 1. AMD HDMI Output Setting


Right-click  on the desktop taskbar to pop up the task box shown in Figure A, click ‘Playback devices’, then jump out of the interface shown in Figure A.



Figure A

Then select the ‘AMD HDMI Output’, right-click, and show it as Figure B. And then select the ‘Set as Default



Device’.

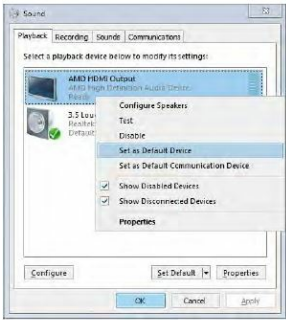

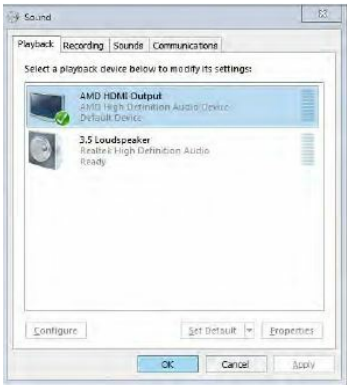


Figure B

It displayed a tick status  , which indicates a successful setup as the Figure C.



2. 3.5 Interface Sound Settings


Right click  on the desktop taskbar to popup task box , click ‘3.5 Loudspeaker’, then jump out of the interface shown in Figure A.



Figure A

Then select the ‘3.5 Loudspeaker’, right-click, and show it as Figure B. And then select the ‘Set as Default Device’.

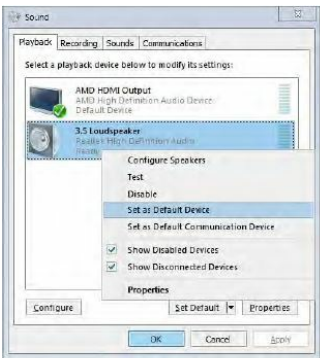



Figure B

It displayed tick status  , which indicates a successful setup as the Figure C.

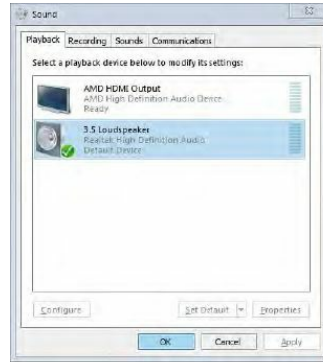


Figure C

## XI.Box Contents:

- 1\* 2 or 4 Port Dual KVM Switch
- 2 or 4\* Cable A 4.92 Feet (1.5 Meters)
- 2 or 4\* Cable B 4.92 Feet (1.5 Meters)
- 1\* power adapter
- 1\* user manual in English

## XII. FAQ & Trouble Shooting

### Q1. Why I cannot get extended displays or does only one monitor work?

1. Make sure your computer has dual video outputs and connect both cable A and cable B from your computer to the switch; use a reliable adapter if needed.
2. Make sure the computer is set to extended display mode.

### Q2: The keyboard or mouse does not work.

1. Firstly, make sure that the USB connector of cable A is already connected to the computer side, there is no signal exception, and the power has been connected.
2. After the image switch is normal, the mouse and keyboard access the KVM switcher, and wait a few seconds for the computer to complete the device recognition.
3. Turn off the KVM and restart power to re-identify
4. Refer to Q9 for gaming or mechanical keyboard

### Q3: Monitors do not display or images display improperly:

1. Check if the cables are connected well or swap the cables, to see if it is a cable problem.
2. Push the 1080P/Auto EDID button to reset (for Dual HDMI KVM Switches only).

### Q4. The mouse on my Mac only has a cursor moving but I can't click and drag the mouse:

1. Try double click the right Ctrl + L + Enter, Or
2. Install USB Overdrive on your Mac

**Q5. My computers only have one HDMI output, how can I connect both cable A and cable B?**

Please refer to "Important Reminder before Set-up"

**Q6. Does it work with USB-C (Type C) Laptops?**

Yes, but depends on the USB-C dock quality which is beyond what we can control.

**Q7. How can I turn off the beep sound?**

You can double-click the right Ctrl + B + Enter to turn the beep on/off.

**Q8. How Can I deactivate the mouse-switching function?**

Simply plug your mouse into the USB2.0 Port on the front panel.

**Q9. My gaming mouse or mechanical keyboard functions are not working. What shall I do?**

Some special mouse and keyboard may not work properly from the USB mouse and keyboard port at the back panel, please try plug them into the USB2.0 HUB on front panel.

**Q10: What is the Auto EDID button for?**

It is for automatically monitoring resolution recognition. If in case monitor does not display properly. Try pressing it several times, and stop a while after each press.

**Q11. I have other issues which are not listed above:**

Please contact our Customer Care Team for support needed, we will reply within 24 hours during business days.

### **XIII. Customer Care**

**E-mail:** [cklservice@163.com](mailto:cklservice@163.com)

**Skype:** eastwind\_11

**Phone:** 0086 13510862456

### **FAQ's**

What is a KVM switch?

A KVM switch is a device that allows you to control multiple computers or servers using a single keyboard, video monitor, and mouse. It helps you switch between different computers without the need for separate peripherals.

How does the ABLEWE KVM switch work?

The ABLEWE KVM switch typically connects to multiple computers or servers via HDMI and USB cables. By pressing a button or using hotkey commands, you can switch between different computers and control them using a shared keyboard, mouse, and monitor.

Does the ABLEWE KVM switch support HDMI video and USB connections?

Yes, the ABLEWE KVM switch is designed to support HDMI video signals and USB connections for keyboard and mouse input. It allows you to connect HDMI-enabled devices and control them with a shared keyboard and mouse.

How many computers can I connect to the ABLEWE KVM switch?

The number of computers you can connect to the ABLEWE KVM switch depends on the specific model you have. Different models may support different numbers of computers, ranging from 2 to 8 or more.

Does the ABLEWE KVM switch support audio switching?

Some models of the ABLEWE KVM switch may support audio switching, allowing you to switch the audio output between connected computers along with the video and USB inputs.

What is the purpose of the ABLEWE KVM-Switches USB and HDMI Switch?

The ABLEWE KVM-Switches USB and HDMI Switch is designed to control up to 2 or 4 multi-graphics card dual-output computers, laptops, and other applicable devices from one set of keyboards, a mouse, and 2 monitors for extended or duplicated display.

What are the applicable models for the ABLEWE KVM-Switches USB and HDMI Switch?

The applicable models for the ABLEWE KVM-Switches USB and HDMI Switch are Dual HDMI KVM Switch 2 Port, Dual HDMI KVM Switch 4 Port, Dual VGA KVM Switch 2 Port, and Dual VGA KVM Switch 4 Port.

What is the resolution supported by the Dual HDMI KVM Switch?

The resolution supported by the Dual HDMI KVM Switch is 480i, 480p, 720p, 1080i, 1080p, and 4K@30Hz.

What is the resolution supported by the Dual VGA KVM Switch?

The resolution supported by the Dual VGA KVM Switch is 2048\*1536@450MHz.

What platforms are supported by the ABLEWE KVM-Switches USB and HDMI Switch?

The ABLEWE KVM-Switches USB and HDMI Switch supports Windows 10/7/2000/XP/Vista, Linux, and Mac.

How do I set up the ABLEWE KVM-Switches USB and HDMI Switch?

Please refer to section IV of the user manual for instructions on how to set up the ABLEWE KVM-Switches USB and HDMI Switch.

How do I switch between devices on the ABLEWE KVM-Switches USB and HDMI Switch?

You can switch between devices on the ABLEWE KVM-Switches USB and HDMI Switch using button switch, click mouse switch, or keyboard hot-key switch. Please refer to section VII of the user manual for more information.

How do I change the hotkey setting on the ABLEWE KVM-Switches USB and HDMI Switch?

Please refer to section VIII of the user manual for instructions on how to change the hotkey setting on the ABLEWE KVM-Switches USB and HDMI Switch.

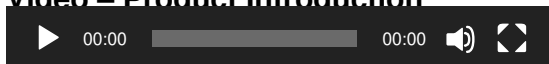
How do I troubleshoot if my keyboard or mouse is not working on the ABLEWE KVM-Switches USB and HDMI Switch?

Please refer to Q2 in section XII of the user manual for troubleshooting steps if your keyboard or mouse is not working on the ABLEWE KVM-Switches USB and HDMI Switch.

How do I troubleshoot if my monitors do not display or images display improperly on the ABLEWE KVM-Switches USB and HDMI Switch?

Please refer to Q3 in section XII of the user manual for troubleshooting steps if your monitors do not display or images display improperly on the ABLEWE KVM-Switches USB and HDMI Switch.

#### Video – Product Introduction



[Download This PDF Link: ABLEWE KVM-Switches USB and HDMI Switch User Manual](#)  
[content/uploads/2023/06/KVM-Switch-](#)  
[HDMI-2-Port-Box.pdf](#)

Manuals+