



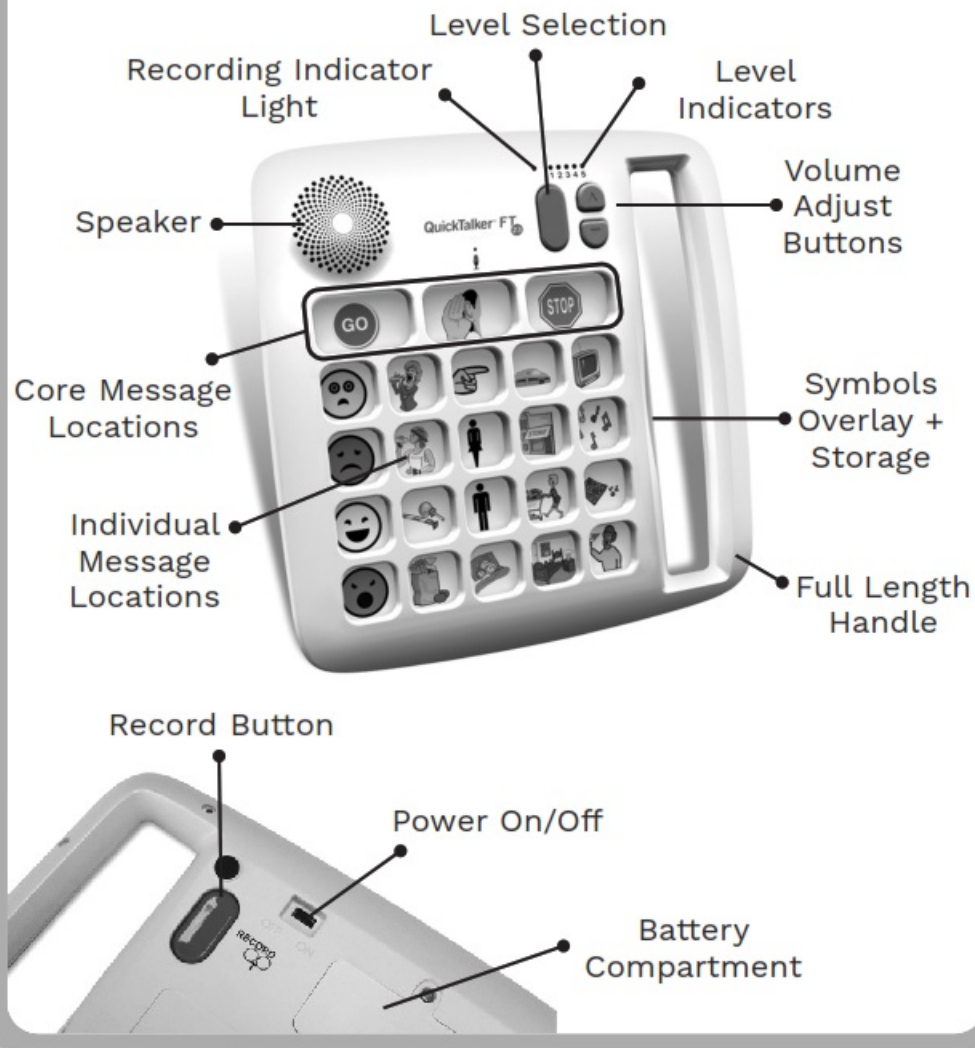
AbleNet FT 7 QuickTalker Speech Device That is Easy-to-us User Guide

[Home](#) » [AbleNet](#) » AbleNet FT 7 QuickTalker Speech Device That is Easy-to-us User Guide 

AbleNet[®]

Quickstart Guide
QuickTalker™ FT 7

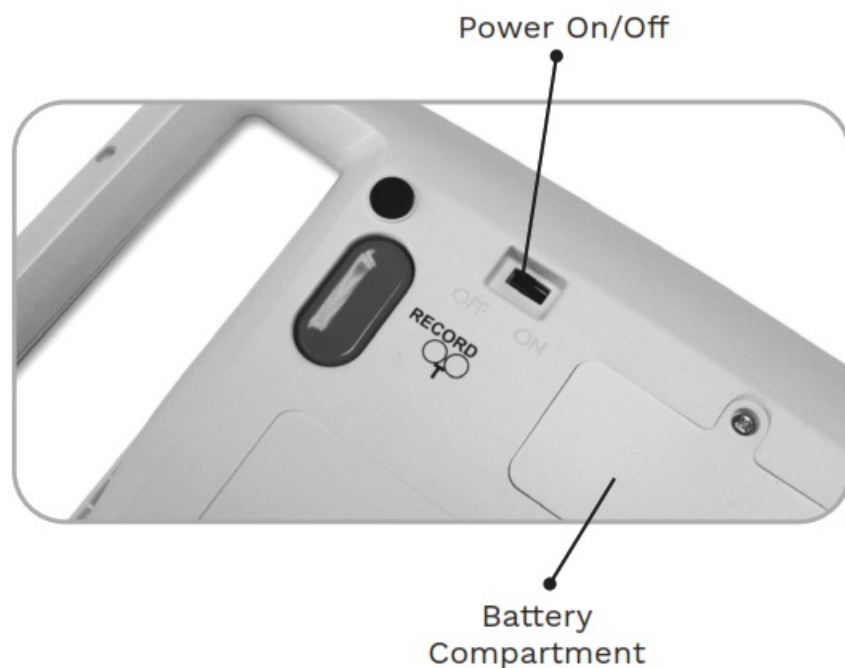
Key Features



Step 1 – Powering QuickTalker™

Powering QuickTalker™

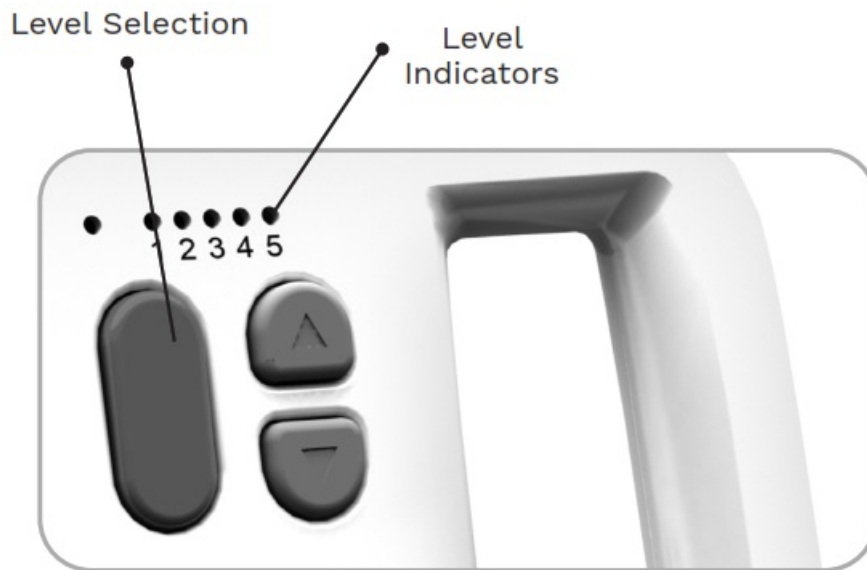
Turn the device to the backside. Insert 4 AA batteries into the battery compartment. Use the On/Off switch to turn on the device.



Step 2 – Select Level

Select Level

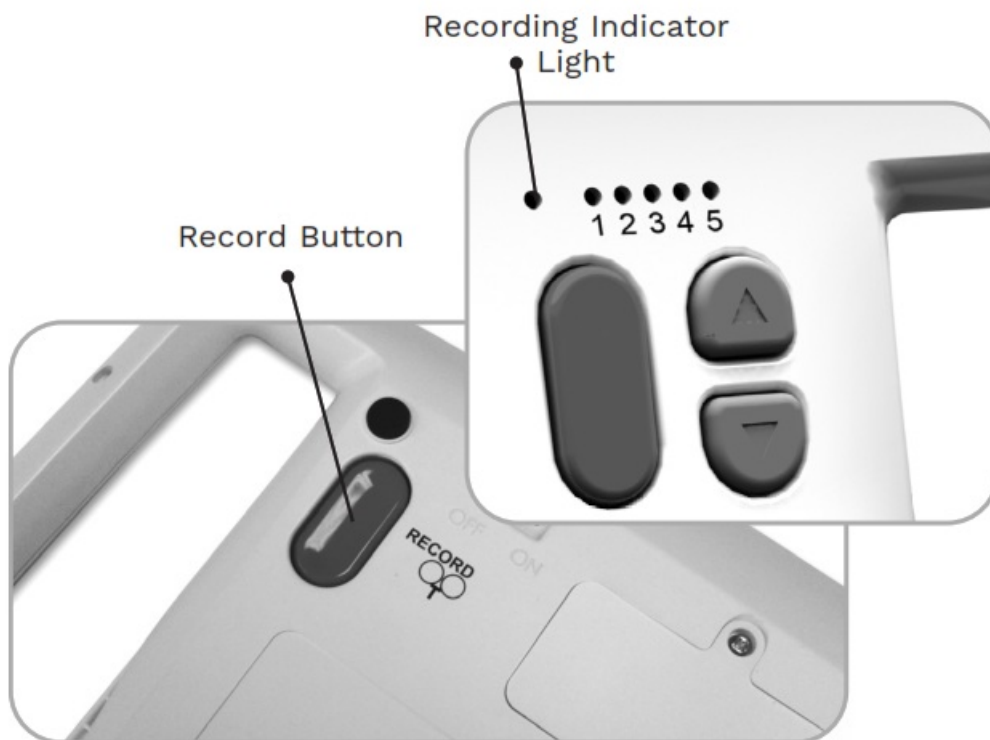
Select LEVEL (1-5) by pressing the white button on the front of the device.



Step 3 – Recording Messages

a) Entering Record Mode

Press and hold the RECORD button on the back of the device until the red light turns on, then release.

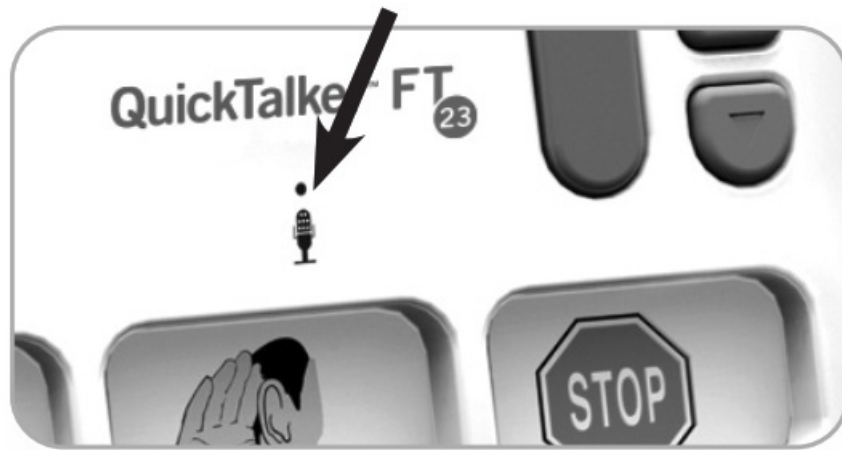


b) Recording Messages

Press and release the desired message location, begin speaking after the beep. Press and release the desired message location a second time to stop recording.

Repeat for other locations.

Tip! Speak 6-8" from the microphone for loud, clear sound.



c) Exiting Record Mode

Press and release the RECORD button. The light turns off.

Note: The device will automatically exit Record Mode after 20 seconds of no activity.

Step 4 – Playing a Message

Playing a Message

Press the desired location to play a message.

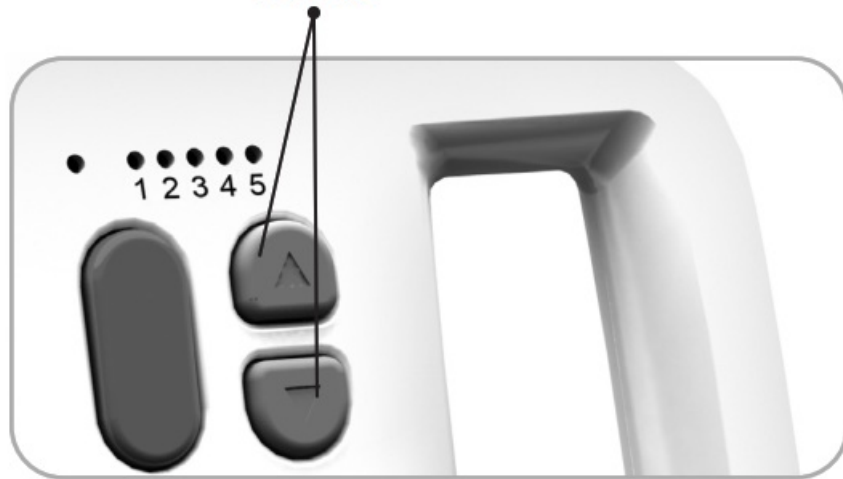


Note: Pressing another location will stop the current message.

Adjusting Volume

Press the gray arrow buttons to adjust the volume.

Volume Adjust
Buttons



Message and light function

When a location is pressed the record light will flash yellow if the location is blank.

Erasing Messages

Level – Press and hold the RECORD button for 10 seconds and all messages on the current level will be cleared. Core messages will remain.

Master Clear – Press and hold the RECORD button for 30 seconds and ALL QuickTalker messages will be cleared.

Record Button



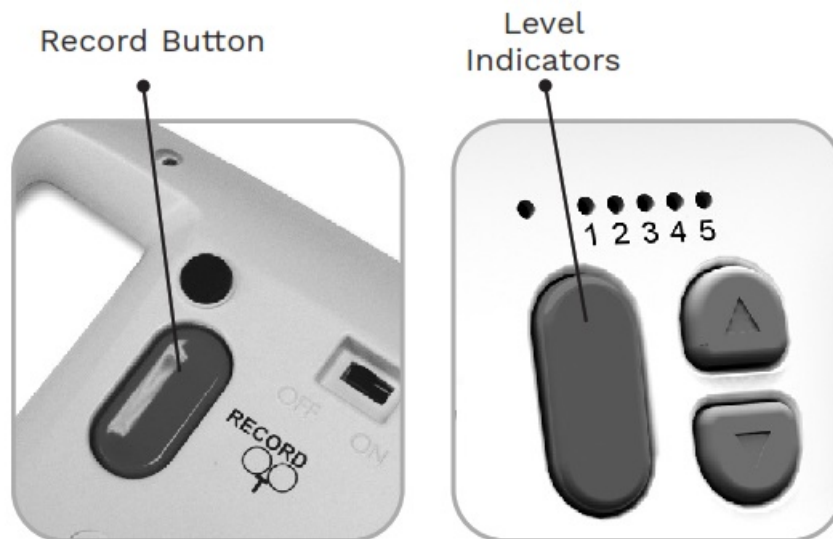
Advanced Features

Core messages

The three core messages will be the same for all levels. The last recorded messages will be played.

Locking the Controls (RECORD & LEVEL)

Press and hold the red RECORD and LEVEL buttons simultaneously for 5 seconds. All lights will flash twice. Repeat to unlock controls.



Warranty and Care

Cleaning and Care

To clean, wipe with a slightly damp cloth.

Warranty

AbleNet manufactured products include a two-year limited warranty. This warranty is against defects in materials and manufacturing for two years from the date of purchase. Warranty in full text is available at www.ablenetinc.com.

More Information

You can find a warranty, guarantee and return information online.

For more information on AbleNet products and services, or for contact:

AbleNet, Inc.

2625 Patton Road, Roseville, MN 55113

800-322-0956

www.ablenetinc.com

Warranty & Contact Information

AbleNet manufactured products include a two-year limited warranty. This warranty is against defects in materials and manufacturing for two years from the date of purchase. Warranty in full text, along with return/repair information is available at www.ablenetinc.com.

AbleNet, Inc. 2625 Patton Road, Roseville, MN 55113 (800) 322-0956 / www.ablenetinc.com

FCC

Warning: Changes or modifications to this unit not expressly approved by the party responsible for compliance could void the user's authority to operate the equipment.


This equipment has been tested and found to comply with the limits for a Class B digital device, pursuant to part 15 of the FCC Rules. These limits are designed to provide reasonable protection against harmful interference in a residential installation. This equipment generates, uses, and can radiate radio frequency energy and, if not installed and used in accordance with the instructions may cause harmful interference to radio communications. However, there is no guarantee that interference will not occur in a particular installation. If this equipment does cause harmful interference to radio or television reception, which can be determined by turning the equipment off and on, the user is encouraged to try to correct the interference by one or more of the following measures:

- Reorient or relocate the receiving antenna.
- Increase the separation between equipment and receiver.
- Consult AbleNet Technical Support or your local Distributor for help.

For private households:

Information on Disposal of Users of WEEE



This symbol  on the product and/or accompanying documents means that used electrical and electronic equipment (WEEE) should not be mixed with general household waste. For proper treatment, recovery, and recycling, please take this product to designated collection points where it will be accepted free of charge. Alternatively, in some countries, you may be able to return your products to your local retailer upon the purchase of an equivalent new product.

Disposing of this product correctly will help save valuable resources and prevent any potential negative effects on human health and the environment, which could otherwise arise from inappropriate waste handling. Please contact your local authority for further details of your nearest designated collection point. Penalties may be applicable for incorrect disposal of this waste, in accordance with your national legislation.

For professional users in the European Union:

If you wish to discard electrical and electronic equipment (EEE), please contact your dealer or supplier for further information.

For disposal in countries outside of the European Union:

This symbol is only valid in the European Union (EU). If you wish to discard this product please contact your local authorities or dealer and ask for the correct method of disposal.

AbleNet[®]

www.ablenetinc.com

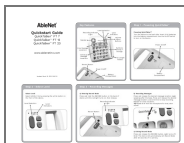
Contents

1 Documents / Resources

1.1 References

2 Related Posts

Documents / Resources



[AbleNet FT 7 QuickTalker Speech Device That is Easy-to-us](#) [pdf] User Guide
FT 7, FT 12, FT 23, QuickTalker Speech Device That is Easy-to-us

References

- [A Home - AbleNet](#)
- [A Home - AbleNet](#)