

abl
Port-O Power
Module



abl Port-O Power Module Owner's Manual

[Home](#) » [ABL](#) » [abl Port-O Power Module Owner's Manual](#) 

Contents

- [1 abl Port-O Power Module](#)
- [2 Product Information](#)
- [3 Product Usage Instructions](#)
- [4 Introduction](#)
- [5 USP](#)
- [6 INSTALLATION](#)
- [7 STANDARD DIMENSIONS](#)
- [8 TECHNICAL INFORMATION](#)
- [9 Documents / Resources](#)
 - [9.1 References](#)
- [10 Related Posts](#)



abl Port-O Power Module



Product Information

Specifications

- **Configuration:** Power socket (Schuko or UK socket type), USB 35W or 65W A+C charger (PD & QC), one or two media connections (RJ45Cat6A, USB-A, USB-C, or HDMI)
- **Fusing:** 5mm x 20mm ceramic fuses for UK sockets, with appropriate marking indicating the rating (3.15A/5A)
- **Power cord:** 0.25m standard lead with 3 Pole connectors, optionally available hardwired cable with national mains plugs
- **Testing:** 100% testing for continuity, polarity & earth; USB PD & QC chargers tested for output voltages, current, and power
- **Manufacturing:** Fully in-house using ISO 9001:2015 quality-controlled practices
- **Colors:** Black (RAL 9005), White (RAL 9003)

Product Usage Instructions

Installation

1. Unclip the ring and place the module in the cutout.
2. Turn the screw clamp clockwise till the fascia is flush with the surface.
3. Secure the ring on the grommet fascia.

Standard Dimensions

- **Cutout:** 60mm
- **Cutout:** 54mm

Technical Details

- The power module offers various socket types including F Type and G Type USB Charger.
- Media connections available include Data, USB, and HDMI.

FAQ

- **Q: What are the available socket types for the Port-O power module?**

A: The available socket types are F Type and G Type USB Charger.

- **Q: What are the available media connections supported by the Port-O power module?**

A: The available media connections are Data, USB, and HDMI.

Introduction

PORT-O IN desk power solutions

- Port-O 60mm grommet is the latest innovation from ABL. It is designed to meet the diverse needs of modern workspaces.
- Its compact size allows for effortless installation into desks, panels, and soft seating areas, ensuring maximum connectivity without sacrificing space.
- With its 60mm grommet feature, this power module offers a range of options including power outlets, USB A and C PD charging ports 35W or 65W charging sockets, as well as media connections, catering to the charging and data transfer requirements of mobile devices, tablets and laptops.
- Port-O combines versatility, functionality, and compact design into one seamless solution.



AVAILABLE SOCKET TYPES:



F TYPE

G TYPE

USB CHARGER

AVAILABLE MEDIA CONNECTIONS:



DATA

USB

HDMI



FASCIAS



USP

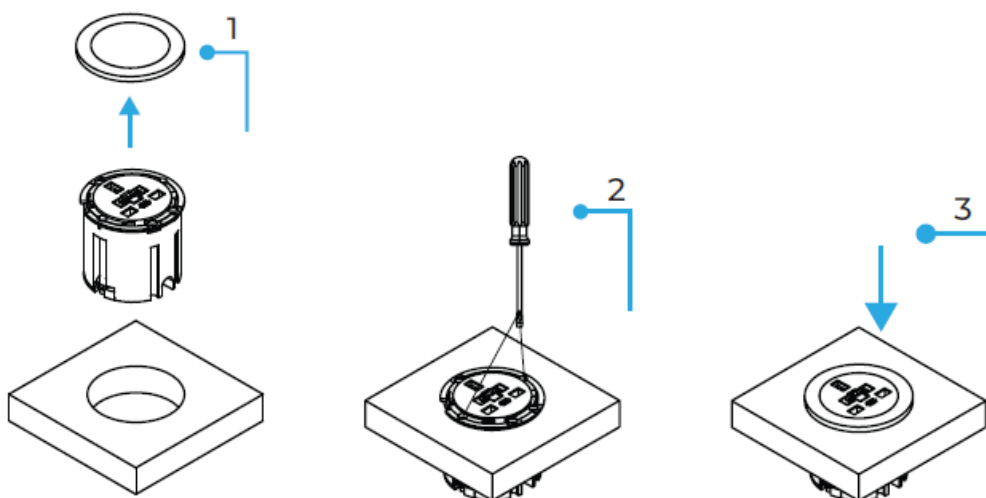
- AVAILABLE WITH A CHOICE OF SCHUKO OR UK POWER SOCKET
- AVAILABLE WITH 35W OR 65W USB A+C CHARGER (PD & QC)
- AVAILABLE WITH A CHOICE OF ONE OR TWO MEDIA CONNECTIONS
- DESIGNED TO FIT INTO A 54 MM GROMMET HOLE AND DESK THICKNESS BETWEEN 10 AND 40 MM
- LOCKING RING ENABLES PERFECT FIXATION WITH NO EFFORT

APPROVALS & CERTIFICATES:



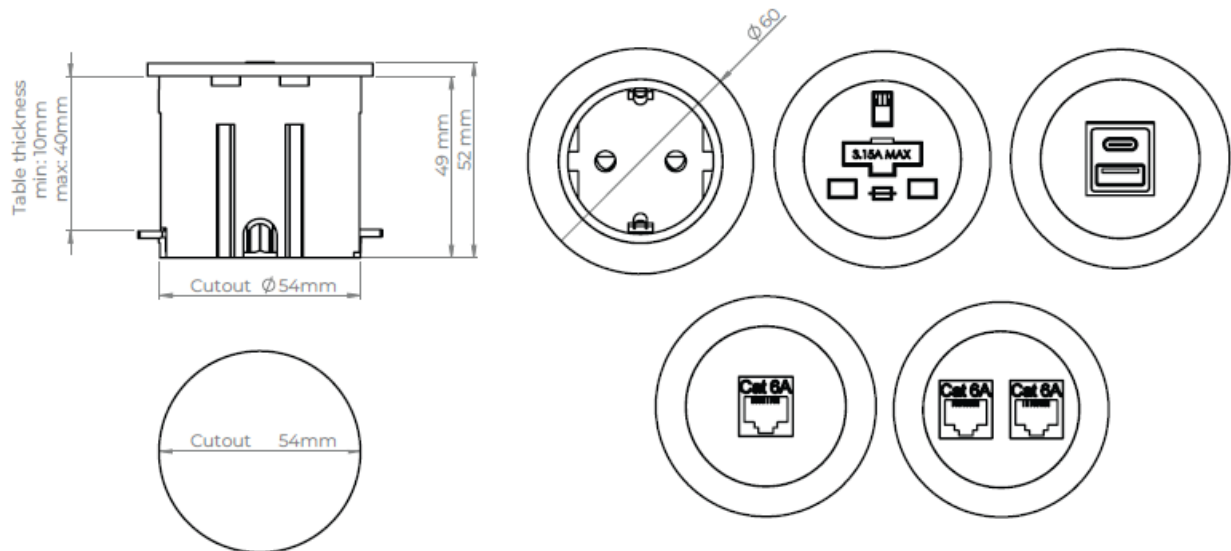
INSTALLATION

Make Ø54mm cutout. Ensure that there is sufficient clearance, below the surface and between the cutout edge and the edge of the work surface.



- **STEP 1.** Unclip the ring and place the module in the cutout
- **STEP 2.** Turn the screw clamp clockwise till the fascia is flush with the surface
- **STEP 3.** Secure the ring on the grommet fascia.

STANDARD DIMENSIONS



TECHNICAL INFORMATION

- **Configuration:**
 - Power socket only (Schuko or UK socket type)
 - USB 35W or 65W A+C charger (PD & QC) only
 - One or two media connections (RJ45Cat6A, USB-A, USB-C, or HDMI)
- **Fusing** (UK sockets only to enable compliance to BS6396): 5mm x 20mm ceramic fuses, with appropriate marking indicating the rating (3.15A/5A). The UK socket features an integral, spare fuse.
- **Power cord:** 0.25m standard lead with 3 Pole connector allows mains or connector leads to be changed to suit requirements, especially useful during moves and changes. Optionally available hardwired cable with appropriate national mains plugs.
- **Testing:** 100% testing – continuity, polarity & earth
- **Testing of the USB PD & QC chargers:** Output voltages, current, and power in all types of charging standard
 - Port-O power module is fully manufactured in-house using ISO 9001:2015 quality-controlled practices.
 - Our power modules are tested in accredited laboratories of certification houses twice a year; in-house quality control testing of each product is completed on every single power module before it leaves the factory.
- **Standard colors:** black (RAL 9005), white (RAL 9003)

Contact Information

- sales@abl-ltd.com
- **UK & Ireland** +44 (0) 1933 400 080
- **EMEA Region** +381 (0) 32 420 100

Documents / Resources



[abl Port-O Power Module](#) [pdf] Owner's Manual

Port-O Power Module, Port-O, Power Module, Module

References

- [User Manual](#)

[Manuals+](#), [Privacy Policy](#)

This website is an independent publication and is neither affiliated with nor endorsed by any of the trademark owners. The "Bluetooth®" word mark and logos are registered trademarks owned by Bluetooth SIG, Inc. The "Wi-Fi®" word mark and logos are registered trademarks owned by the Wi-Fi Alliance. Any use of these marks on this website does not imply any affiliation with or endorsement.