

abl Port-O Desk Power Module



abl Port-O Desk Power Module User Manual

[Home](#) » [ABL](#) » **abl Port-O Desk Power Module User Manual** 

Contents

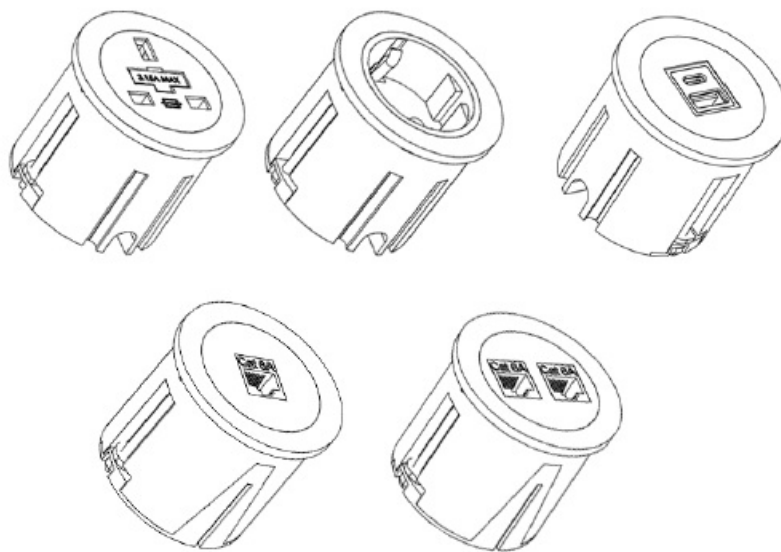
- [1 abl Port-O Desk Power Module](#)
- [2 INSTALLATION](#)
- [3 MAIN FEATURES](#)
- [4 SAFETY NOTES](#)
- [5 CONTENTS](#)
- [6 MAINTENANCE](#)
- [7 WARRANTY CONDITIONS](#)
- [8 CONTACT US](#)
- [9 Documents / Resources](#)
 - [9.1 References](#)



abl Port-O Desk Power Module



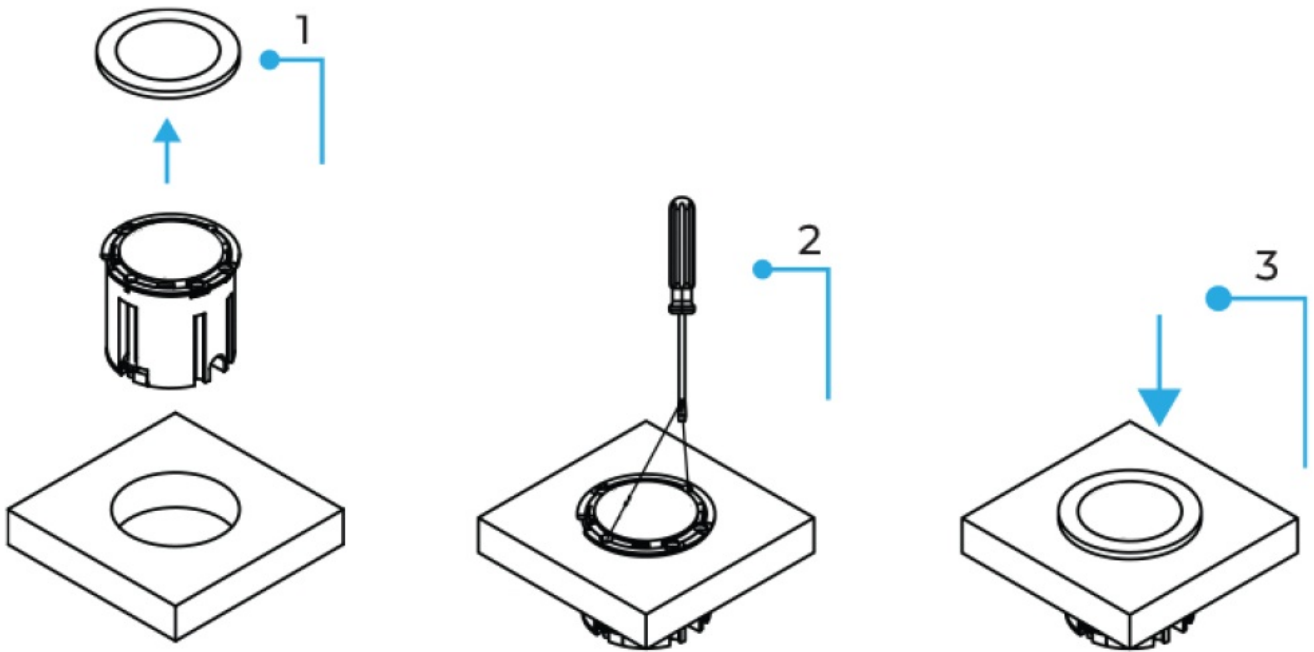
Thank you for purchasing ABL's Port-O power module. Port-O has been manufactured and tested by relevant standards.



INSTALLATION

Make a 54 mm cutout. Ensure that there is sufficient clearance below the surface and between the cut-out edge and the edge of the work surface.

1. Unclip the ring and place the module in the cutout
2. Turn the screw clamp clockwise till the fascia is flush with the surface
3. Secure the ring on the grommet fascia



MAIN FEATURES

- The module is available in Black or White, with a Black profile
- Available in variations of UK socket, Schuko socket, USB charger and one or two media connections
- The rated voltage of the Port-O power module unit is 250V AC (G, F type socket)
- **Nominal intensity of the unit:**
 - 3,15A or 5A for G-type socket
 - 16A for F-type sockets
- **Power of Port-O with USB A+C charger:**
 - 35 W Max (for USB A+C 35W)
 - 65 W Max (for USB A+C 65W)
- G-type sockets are individually fused with 3.15A or 5A fuse.
- Fit into a 54 mm port hole, and desk thickness between 10 mm and 40 mm
- The locking ring enables quick installation and fitting with no effort

Contact us for more information.

SAFETY NOTES

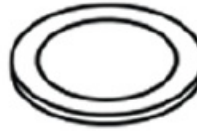
- Items such as Vacuum Cleaners, Kettles, Coffee Makers, and Fan Heaters should not be connected via these power modules
- Installation is to be carried out by a qualified professional

CONTENTS

- **Port-O power module**



- **Plastic ring**



MAINTENANCE

Do not open, disassemble, change, or modify the device. Every unauthorized opening or repair of the device leads to a loss of warranty. During device usage, you need to follow basic safety measures. since safety requirements vary, please check with local laws.

WARRANTY CONDITIONS

ABL warrants this product as free of defects in material, design, and workmanship for twenty-four (24) months from the original date of receipt of the product unless applicable national laws stipulate otherwise. If during the period of warranty, this product proves defective under normal use and service you should return the product to the retailer from whom it was originally purchased. The liability of the ABL is limited to the cost of repair and/or replacement of the unit under warranty. The warranty is void if a failure occurs due to the following reasons:

- Improper device installation
- Improper handling
- Improper transport
- Force majeure

WARNING:

Do not use this product for any other purpose other than what it was designed for.

CONTACT US

UK DISTRIBUTION CENTRE

Unit A6 Brooklands Technology Park, Wellingborough Road, Sywell, Northamptonshire, NN6 OBN, United Kingdom United Kingdom

- +44 IOI 1933 400 080
- sales@abl-ltd.com.

EMEA DISTRIBUTION CENTRE

- Lava Tolstoja 25 32103 Cacak Serbia
- +381 (0) 32 420 100
- sales@abl.co.rs.

Complies with BS 5733 (UK)
IEC 60884-1 and IEC 60884-2-7 (Europe)


Manufacturing in-house within central Europe under strict compliance with ISO 9001:2015

SCAN ME



www.abl-ltd.com

Documents / Resources

	<p>abl Port-O Desk Power Module [pdf] User Manual Port-O Desk Power Module, Port-O, Desk Power Module, Power Module, Module</p>
-----------------------------------------------------------------------------------	-----------------------------------------------------------------------------------------------------------------------------------------------------

References

- [User Manual](#)

[Manuals+.](#) [Privacy Policy](#)

This website is an independent publication and is neither affiliated with nor endorsed by any of the trademark owners. The "Bluetooth®" word mark and logos are registered trademarks owned by Bluetooth SIG, Inc. The "Wi-Fi®" word mark and logos are registered trademarks owned by the Wi-Fi Alliance. Any use of these marks on this website does not imply any affiliation with or endorsement.