



abl Port EI Desk Power Module User Manual

[Home](#) » [ABL](#) » **abl Port EI Desk Power Module User Manual** 

Contents

- [1 abl Port EI Desk Power Module](#)
- [2 OVERVIEW](#)
- [3 INSTALLATION](#)
- [4 MAIN FEATURES](#)
- [5 CONTENTS](#)
- [6 MAINTENANCE](#)
- [7 WARRANTY CONDITIONS](#)
- [8 CONTACT US](#)
- [9 Documents / Resources](#)
- [10 Related Posts](#)

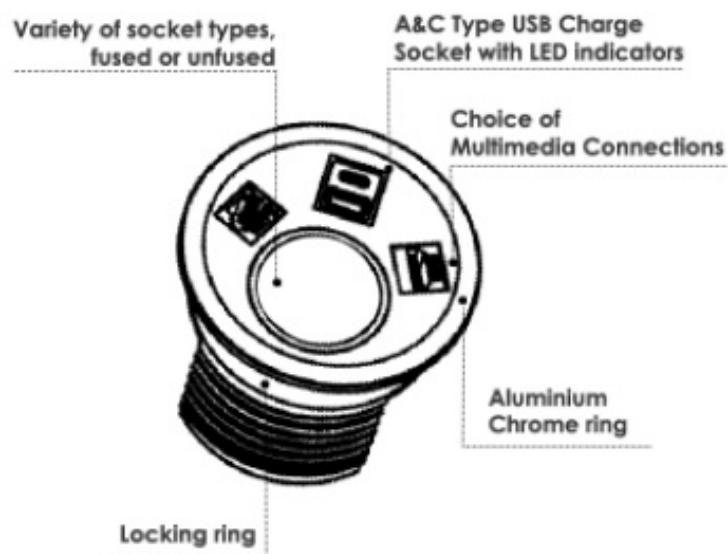
Port EI

abl Port EI Desk Power Module



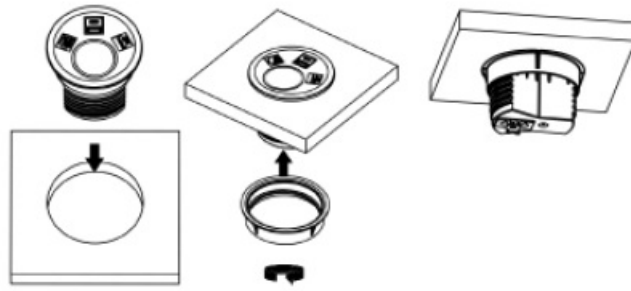
Thank you for purchasing ABL's Port EI power module. Port EI has been manufactured and tested in accordance with relevant standards (see contact page).

OVERVIEW



INSTALLATION

Ensure that there is sufficient clearance, 150mm below the surface and 30mm between the cut-out edge and the edge of the work surface.



- **Step 1:** Place the module in the desk cut-out.
- **Step 2:** Whilst twisting the locking ring, set the module orientation.
- **Step 3:** Connect the mains lead with the 3 Pole Connector.

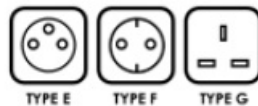
MAIN FEATURES

The module is available in Black, White, or Grey: with an elegant, Silver aluminum ring. Available configurations: one socket, one smart charge, and up to two media connections. The rated voltage of the Port EI power module unit is 250V AC (C, E, F, G, J, L). for B-type sockets 120V AC

The nominal intensity of the unit:

- 13A for G-type sockets
- 16A for B, C, E, F, J, L type sockets
- G type sockets are individually fused with 3.15A or 5A fuse to comply with BS6396
- Fit into an 80mm port hole, and desk thickness between 15 and 45mm
- The locking ring enables quick installation and fitting with no effort

Note: The most common socket types:



- Contact us for more information.

SAFETY NOTES

1. Items such as Vacuum Cleaners, Kettles, Coffee Makers, and Fan Heaters should not be connected via these power modules
2. Installation is to be carried out by a qualified professional.



- Complies with BS 5733 (UK) IEC 60884-1 and IEC 60884-2-7 (Europe)

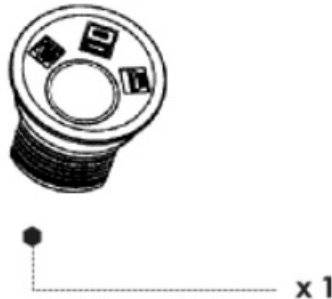


- Kitemark certified on 13A Plugs and Socket outlets (KM686563)



- Manufacturing in-house within central Europe is under strict compliance with ISO 9001:2015

CONTENTS



- Port EI power module

Note: Use mains lead cable to connect Port EI power module with the main power supply.

MAINTENANCE

Do not open, disassemble, change, or modify the device. Every unauthorized opening or repairing of the device leads to loss of warranty. During device Usage, you need to follow basic safety measures. Since safety requirements vary, please check with local laws.

WARRANTY CONDITIONS

ABL warrants this product as free of defects in material, design, and workmanship for the period of twenty-four (24) months from the original date of receipt of the product, unless applicable national laws stipulate otherwise. If during the period of warranty this product proves defective under normal use and service you should return the product to the retailer from whom it was originally purchased. The liability of the ABL is limited to the cost of repair and/or replacement of the unit under warranty. The warranty is void if a failure occurs due to the following reasons:

- Improper device installation
- Improper handling
- Improper transport
- Force majeure

WARNING: Do not use this product for any other purpose other than what it was designed for.

CONTACT US

UK DISTRIBUTION CENTRE

- 14 Fleming Close

- Park Farm Ind. Estate Wellingborough Northants NN8 6UF
- United Kingdom
- 44 (0) 1933 400 080
- sales@abl-ltd.com

EMEA DISTRIBUTION CENTRE

- Lava Tolstoja 25 32103 Cacak Serbia
- +381 (0) 32 420 100
- sales@abl.co.rs

Documents / Resources

	<p>abl Port EI Desk Power Module [pdf] User Manual Port EI, Desk Power Module, Port EI Desk Power Module</p>
---	--

Manuals+.