



# ABKO WKM910 Wireless Keyboard and Mouse Combo User Manual

[Home](#) » [ABKO](#) » ABKO WKM910 Wireless Keyboard and Mouse Combo User Manual 



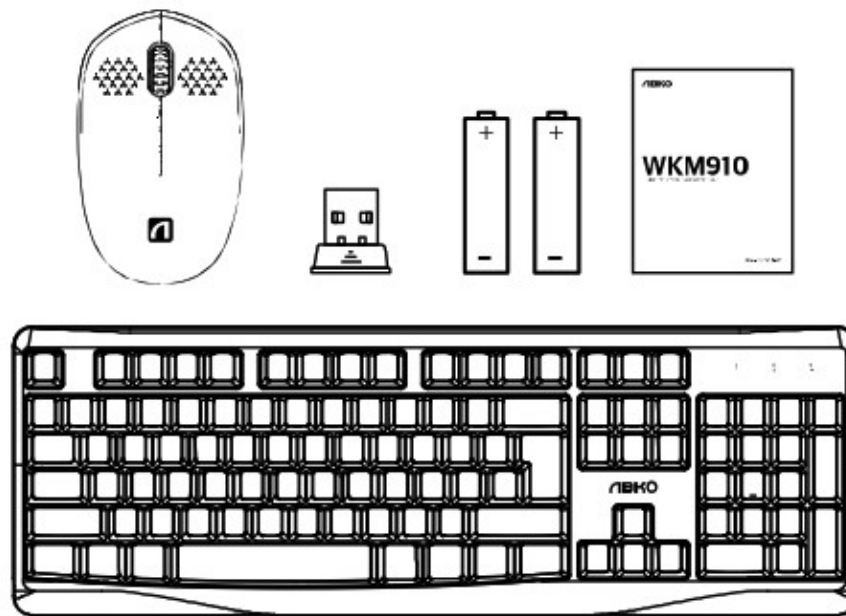
## WKM910 WIRELESS KEYBOARD AND MOUSE COMBO

### Contents

- [1 PACKAGE CONTENTS](#)
- [2 SYSTEM REQUIREMENT](#)
- [3 FUNCTIONS](#)
- [4 INSTALLATION](#)
- [5 FEDERAL COMMUNICATIONS COMMISSION NOTICE](#)
- [6 WARRANTY](#)
- [7 Documents / Resources](#)
- [8 Related Posts](#)

## PACKAGE CONTENTS

- 1x Wireless Keyboard
- 1x Wireless Mouse
- 1x User Manual
- 1x USB Receiver (in mouse battery storage)
- 2.x AA alkaline batteries



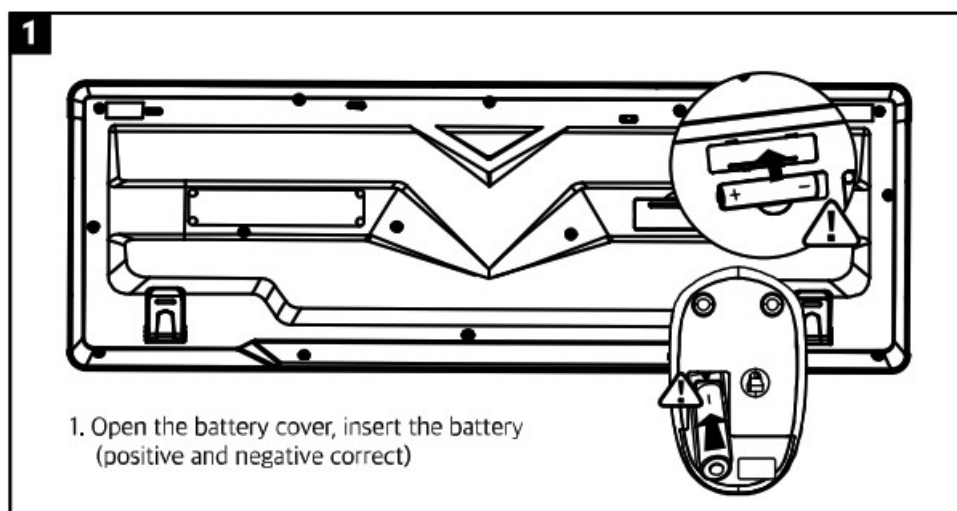
## SYSTEM REQUIREMENT

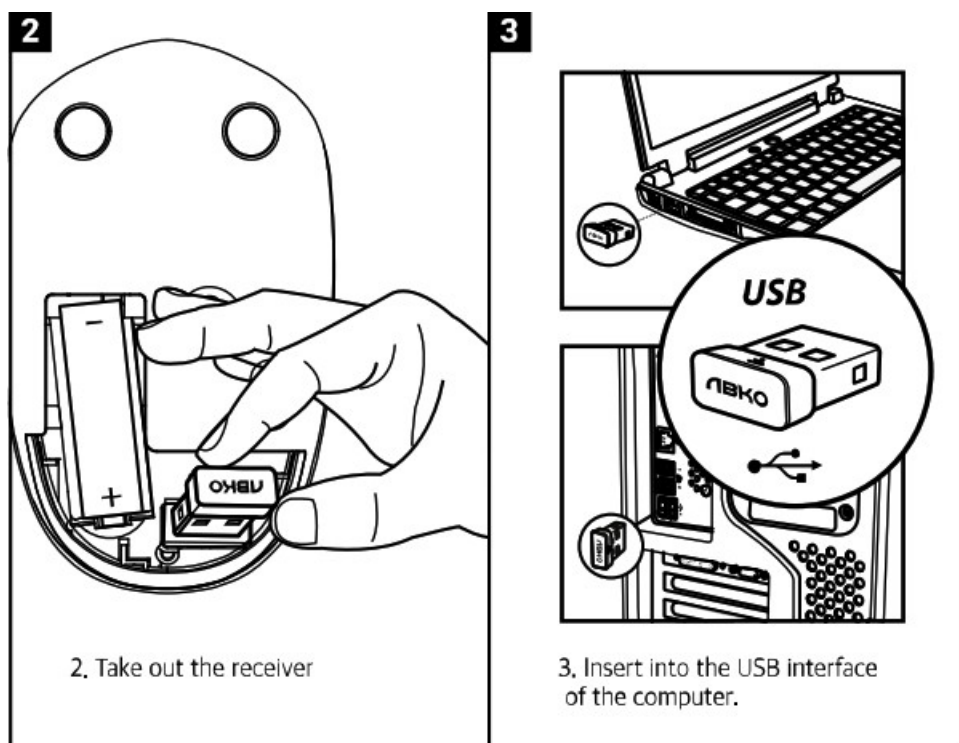
WinXP / Win 7/8/10 or higher Mac OS x 10.4 or higher Workable USB port.

## FUNCTIONS

<b>Fn+F1</b>	<b>Fn+F2</b>	<b>Fn+F3</b>	<b>Fn+F4</b>	<b>Fn+F5</b>	<b>Fn+F6</b>
Open the audio	Volume down	Volume up	Mute	Previous track	Next Track
<b>Fn+F7</b>	<b>Fn+F8</b>	<b>Fn+F9</b>	<b>Fn+F10</b>	<b>Fn+F11</b>	<b>Fn+F12</b>
Play/Pause	Stop	Homepage	Email	My computer	Favorites

## INSTALLATION





## FEDERAL COMMUNICATIONS COMMISSION NOTICE

This device complies with part 15 of the FCC Rules,  
Operation is subject to the following two conditions:

1. This device may not cause harmful interference, and
  2. this device must accept any interference received, including interference that may cause undesired operation.
- Any Changes of modifications not expressly approved by the party responsible for compliance could void the user's authority to operate the equipment.

**Note:** This equipment has been tested and found to comply with the limits for a Class B digital device, pursuant to part 15 of the FCC Rules. These limits are designed to provide reasonable protection against harmful interference in a residential installation.

This equipment generates uses and can radiate radio frequency energy and, if not installed and used in accordance with the instructions, may cause harmful interference to radio communications,

However, there is no guarantee that interference will not occur in a particular installation, If this equipment does cause harmful interference to radio or television reception, which can be determined by turning the equipment off and on, the user is encouraged to try to correct the interference by one or more of the following measures:

- Reorient or relocate the receiving antenna.
- Increase the separation between the equipment and receiver.
- Connect the equipment into an outlet on a circuit different from that to which the receiver is connected.
- Consult the dealer or an experienced radio/TV technician for help.

The device has been evaluated to meet general RF exposure requirement,

The device can be used in portable exposure condition without restriction.

## WARRANTY

All warranty service is provided by our factory service center, or an authorized customer care technician.  
 If you have any inquiry, please visit our website or email us, Please check below information, To schedule your service, please have your serial number and your model number available for service,  
 Website : <https://abkoglobal.com/contact-us/>  
 E-mail : [cs\\_support@abko.co.kr](mailto:cs_support@abko.co.kr)

For the period of	ABKO will replace
1. year from the date of the original purchase (*6 months for motors)	ABKO will replace free of charge the part that proves defective in material and manufacturing workmanship, under normal installation, use and service,

### What ABKO will not cover

- Failure of the product if it is abused, misused, modified, or used for other than the intended purpose or used commercially.
- Damage to the product caused by accident, fire, floods, any natural disasters or acts of God.
- Damage to finish, such as surface rust, tarnish, or small blemishes not reported within 48 hours of delivery.
- Incidental or consequential damage caused by improper use or not following manual.
- Damage caused after delivery.
- Product not accessible to provide required service.
- Service to repair or replace lights bulbs, except for LED lamp.


\* This limited warranty is extended to the original purchaser and any succeeding owner for products purchased for home use in the world, If the product is located in an area where service by a ABKO is not available, you may be responsible for a trip charge or you may be required to bring the product to an authorized ABKO service location for service. Some regions/countries do not allow the exclusion or limitation of incidental or consequential damages. This limited warranty gives you specific legal rights, and you may also have other rights which vary from country to country. To know what your legal rights are, consult your local/region or country consumer affairs office or your Attorney General,

### EXCLUSION OF IMPLIED WARRANTIES

Your sole and exclusive remedy is product repair as provided in this Limited Warranty. Any implied warranties, including the implied warranties of merchantability or fitness for a particular purpose, are limited to one year or the shortest period allowed by law.

[www.abkoglobal.com](http://www.abkoglobal.com)

### Documents / Resources

	<a href="#">ABKO WKM910 Wireless Keyboard and Mouse Combo</a> [pdf] User Manual WKM910, Wireless Keyboard and Mouse Combo
---	--