



Ability VS68200 AI-Eye 8M Fixed Lens Dome Network Camera User Guide

[Home](#) » [Ability](#) » Ability VS68200 AI-Eye 8M Fixed Lens Dome Network Camera User Guide 

Ability VS68200 AI-Eye 8M Fixed Lens Dome Network Camera User Guide



Contents

[1 Accessing via Web Browser](#)

[2 Installation](#)

[2.1 Cable connection](#)

[3 Desiccant Bag Replacement](#)

[4 Check Item](#)

[5 FCC compliance statement](#)

[6 Documents / Resources](#)

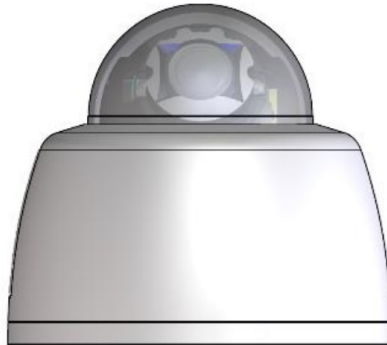
[7 Related Posts](#)

Accessing via Web Browser

| Default IP address | User name | Password |
|----------------------|-----------|--------------|
| https://192.168.0.11 | admin | AbAi.Camera1 |

Appearance Description

The overview of the dome camera is shown below:

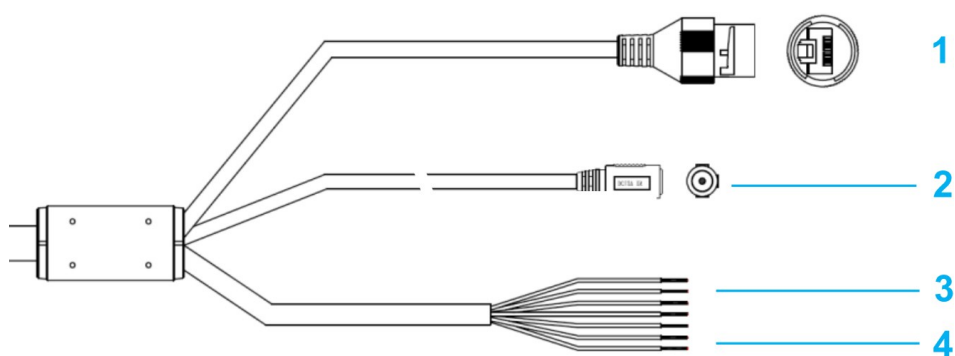


Packing list

| Component | Pieces |
|------------------|--------|
| Camera | 1 |
| Drilling sticker | 1 |
| Expansion tube | 2 |
| Tapping screw | 2 |

Cable

| No | Item | Description |
|----|--------------------------------|--|
| 1 | LAN/POE | Ethernet/POE connection. This interface supports POE. |
| 2 | DC 12V+ / DC 12V – | Power input interface. DC 12V 9.0V 15.0V |
| 3 | ALARM_OUTCOM | Alarm output and COM interfaces. The interface worktogether to form the alarm output. |
| | ALARM_IN ALARM_GND | Alarm input interface. There may be multiple alarm interfaces. For a gi ven number of interfaces, n, they are numbered (for example: ALARM _IN0,ALARM_IN1, ...,ALARM_INn). Each one connects to theALARM _GND connection to form a single alarm input. |
| 4 | AUDIO IN/ AUDIO OUT/AUD IO_GND | Audio input (connect to MIC)/output interface and audio ground interfa ce. |















Installation

Note

Make sure the device in the package is in good condition and all the assembly parts are included. You will need the following

TOOLS REQUIREDMENT

| | | | | | |
|---|--|--|---|--|--|
|  Video surveillance tester |  Hammer drill (for mounting a camera on the ceiling or wall) |  PVC insulation tape |  Phillips screwdriver (Head model:1# and 2#.) |  RJ-45 connector crimping tool |  Measuring tape |
|  Claw hammer (for mounting a camera on the ceiling or wall) |  Cable stripper |  Waterproof tape |  Glass cement |  Utility knife |  Wiring terminal |

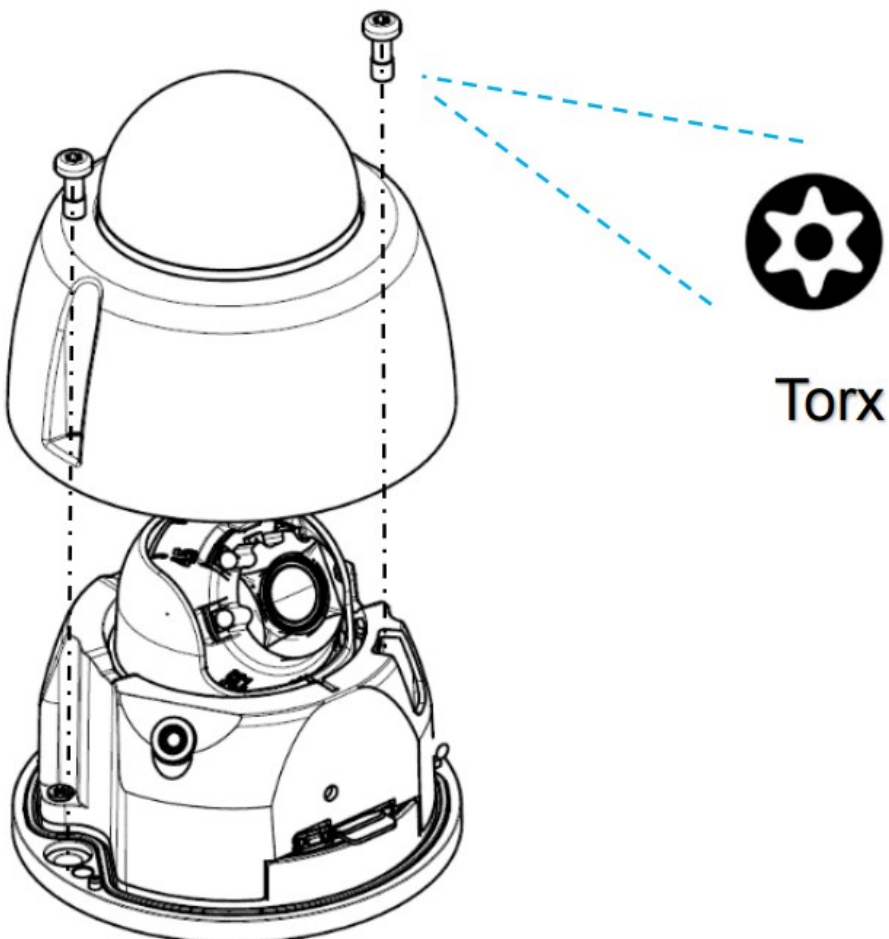
Caution

Please do not lift a camera by its cable



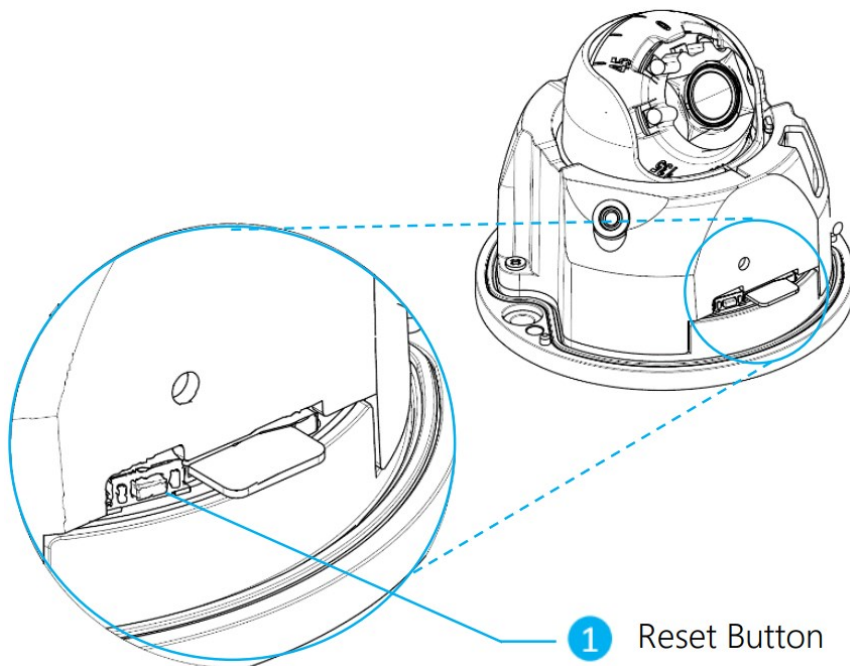
Top cover of the camera removes

- Use a Trox screwdriver to remove the Top cover of the camera, and lift the cover to open it. Then, you can see the Reset button and an SD card slot.



Reset Button

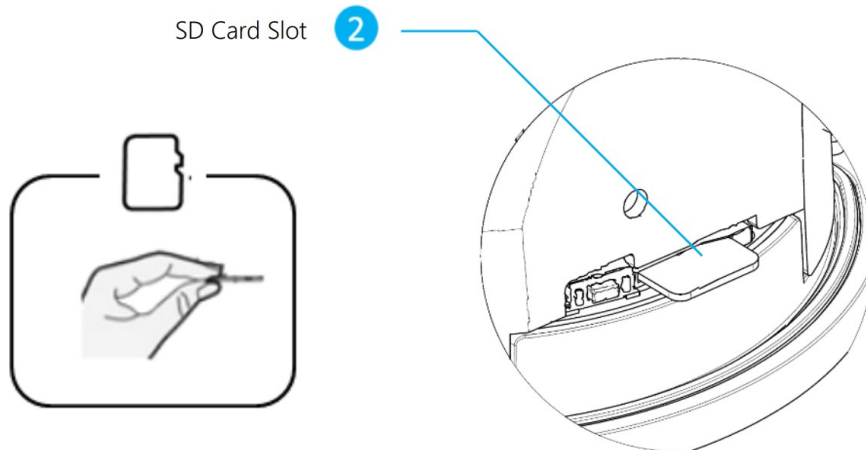
- To restore the camera to factory settings and software reboot the camera, you need to press and hold the reset button 5~10 seconds.
- To restore the camera to factory settings and hardware reboot the camera, you need to press and hold the reset button more than 10 seconds.



Micro SD card installation

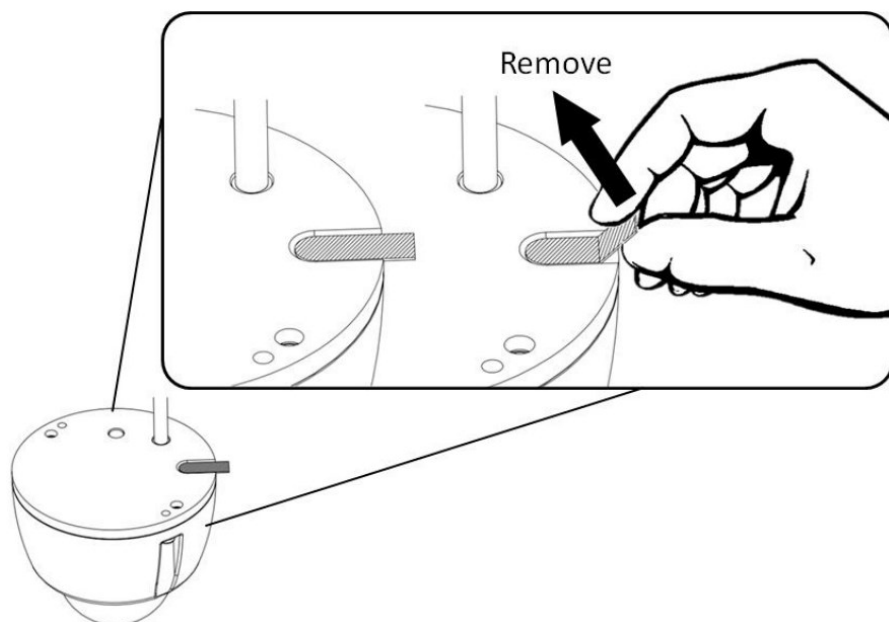
The SD card slot supports only class 6 or higher Micro SD card. To replace a Micro SD card, the device must be powered off. Otherwise, system exception may occur. When a Micro SD card is used for the first time, log in to the web client of the device and format the Micro SD card. For details, see the Configuration Guide.

Please refer to figure 2.5, insert the memory card to memory card slot on the rear housing of the camera. During SD card installation, you are advised to turn the camera maintenance position upward and insert the SD card into the SD card slot from upon to avoid accidentally dropping the SD card into the camera.



Remove the Anti-moisture Sticker

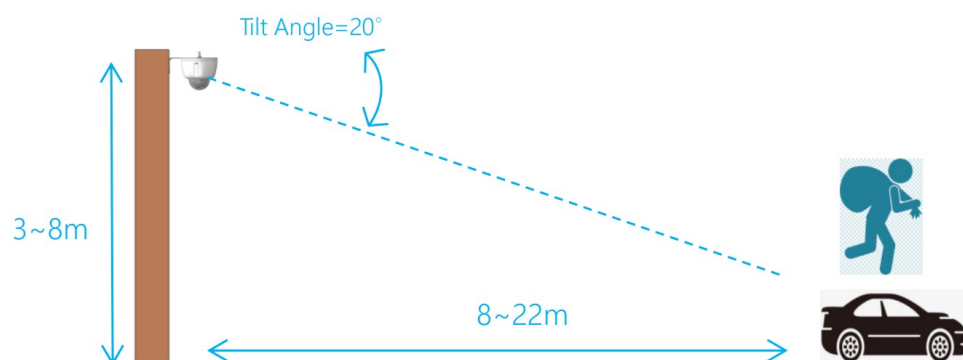
Before mounting the camera onto its install position, please remove the anti moisture sticker in the first place to get the air vent start working



Camera mounting

The suggested mounting height is over 3 meters at least.

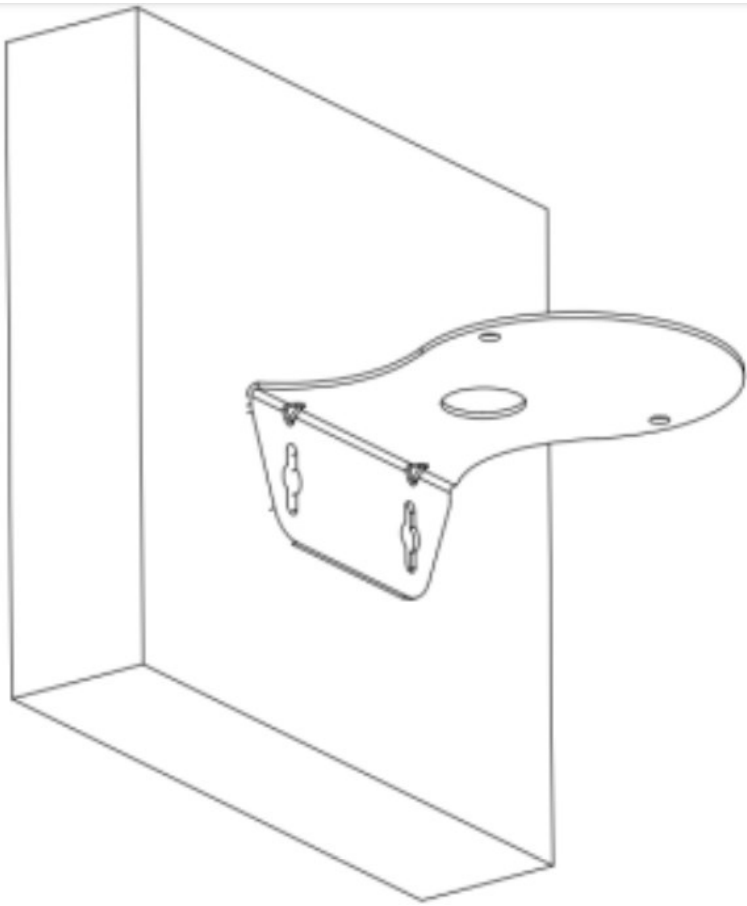
The right height and angle of the camera is important to ensure image quality. The figure of the camera is the installation requirements for concept and reference only.



Wall Mount Installation with wall mount stand

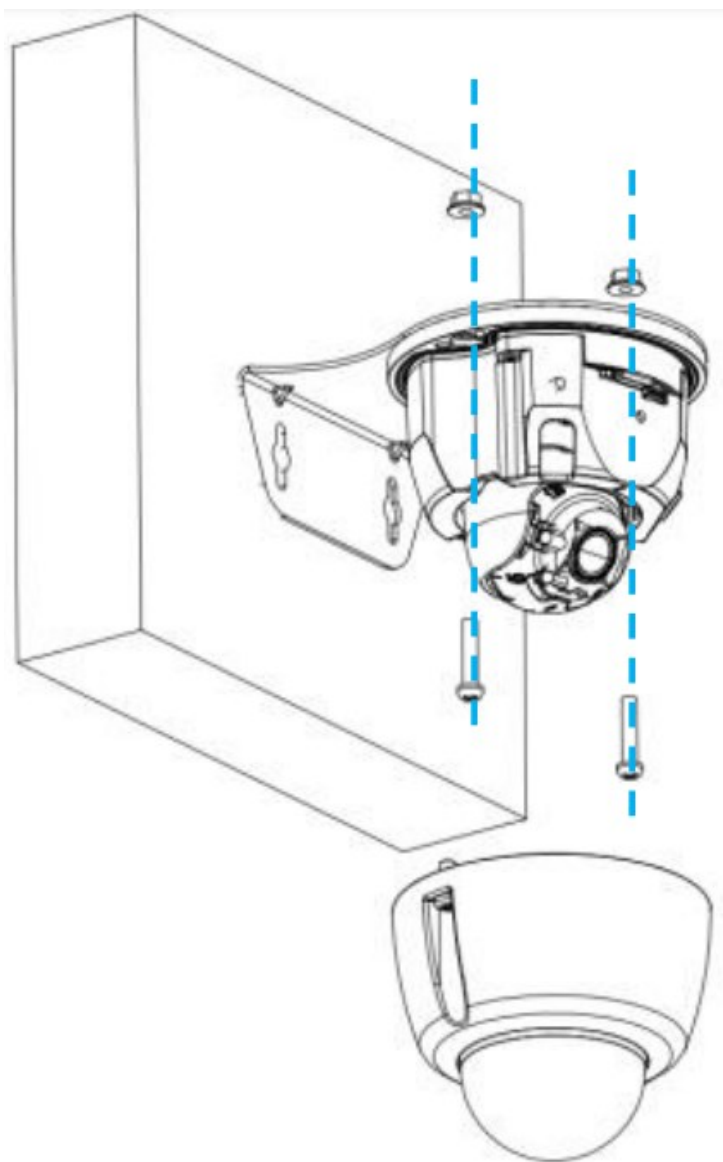
Step 1

Use a 5mm drill bit to drill four 35mm deep holes in the positions marked by the drilling sticker. Use a hammer to carefully drive the white plastic expansion tubes into the holes. Then use 2 screws to mount the wall stand onto the wall.

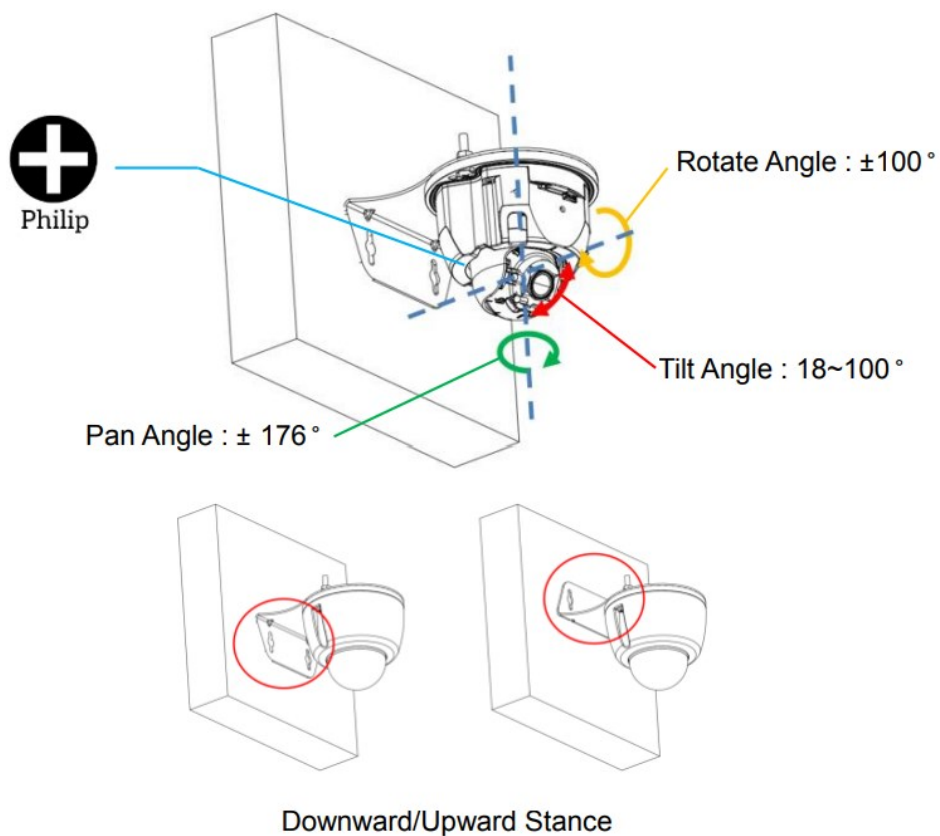


Step 2

Place the camera onto the wall-mount bracket such that the cables are threaded through the hole of the bracket as well as. Then use 2 pairs of screws and nuts to mount the camera onto the wall-mount bracket.

**Step 3:**

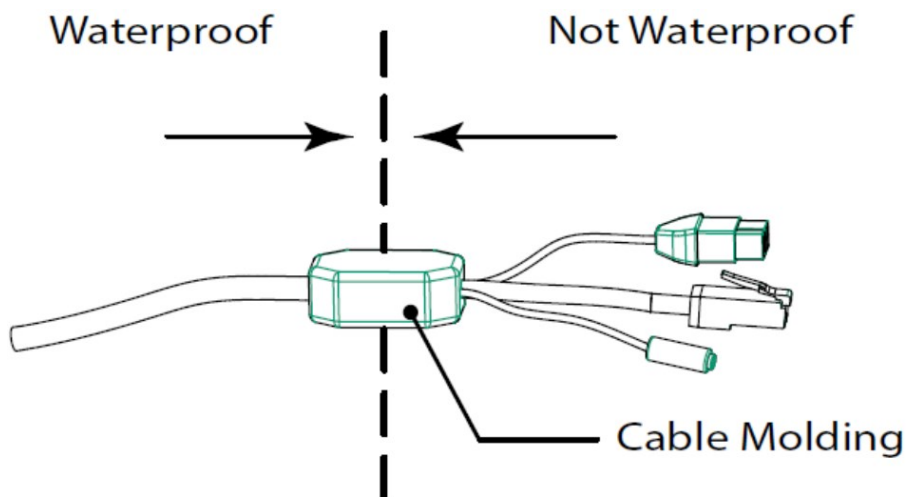
Loosen the Philips head screws and adjust the camera to the required angle. Then re-tighten the screws. Finally, fasten the top cover of the camera. (Note. Depending on the usage and the space limitation, the mounting can be done as the two stances shown in the figures.)



Cable connection

For safety precautions

- The lightning arrester must be installed and grounded if you install camera outdoor.
- Strong and weak current cables must be kept at least 5 cm apart from each other. When connecting the cables to the device, take care to avoid connecting strong current cables to weak current interfaces or you will damage your device.
- The tail of cable must be cut if it cannot pass through the wall, please keep the label on tail of cable. And please make sure to use insulating tape and waterproof tape to insulate and waterproof all tail of cable to avoid short circuits and water leakage.
- Wrap all pigtail cables in insulated, waterproof, rubber tape to prevent short circuits or water damage.



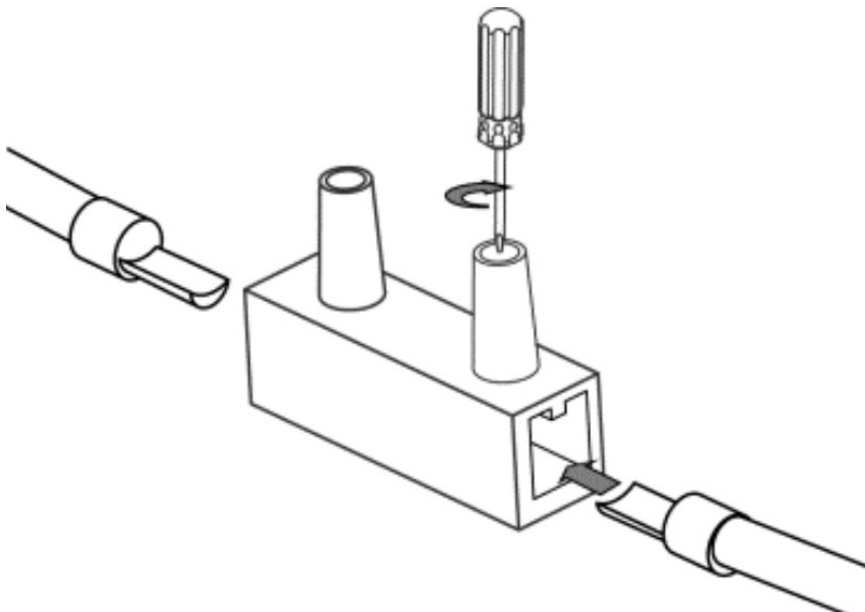
Power cable connection

Connect the power cable to the device.



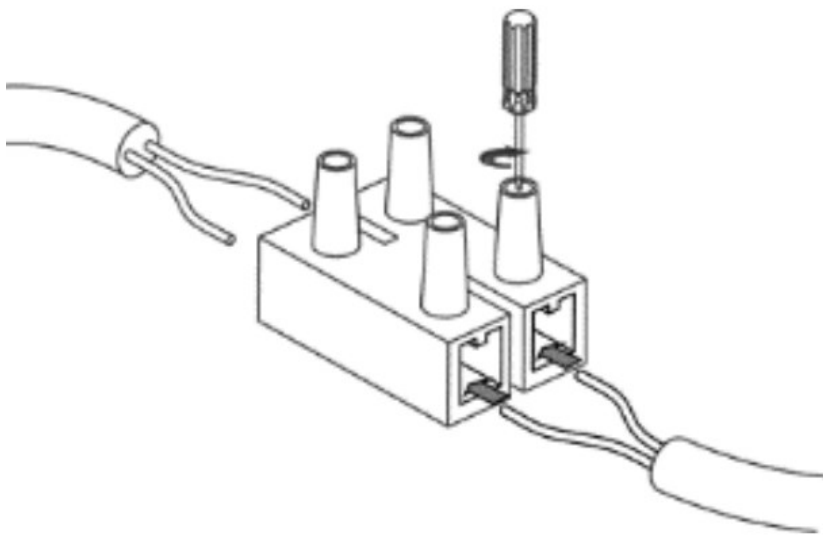
Ground cable installation

Please connect ground cable of camera to ground.



Audio and alarm cable installation

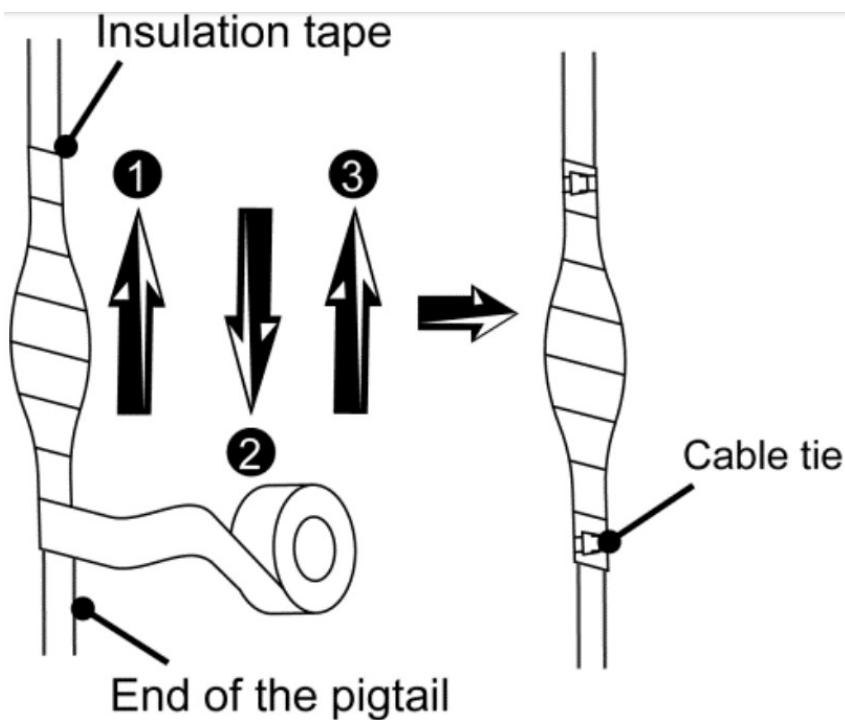
Connect the ground cable to ground the device, and then connect the power cable. If crimp terminals are not used, the wire thickness cannot exceed 1.5mm², and the length cannot exceed 25m. If crimp terminals are used, the wire can be up to 0.75mm² for a 15m length of wiring or up to 1.0mm² if 20m is required. Longer wiring is not supported. The ground impedance cannot exceed 5 ohms.



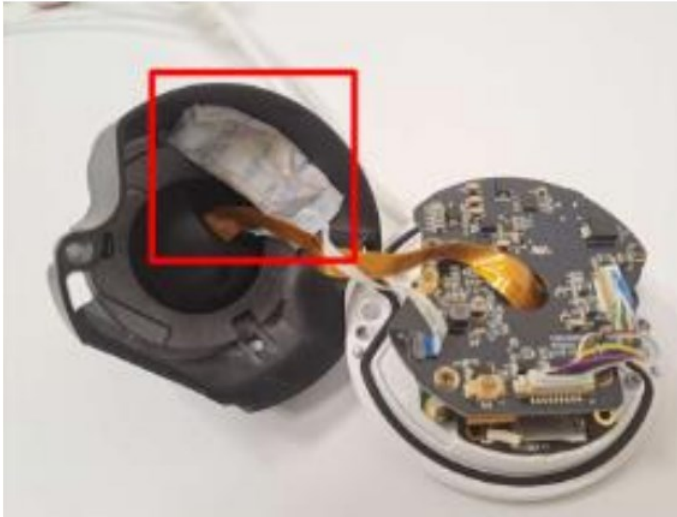
Cable waterproof and insulation

Waterproof and insulate all cables including power cables, network cables, and unused pigtails.

1. Wrap one layer of insulation tape around each cable joint.
2. Stretch the waterproofing tape evenly to twice its original length. Then apply it for three layers from bottom to top, from top to bottom, and from bottom to top again.
3. Stretch the insulation tape evenly to twice its original length. Then apply it for three layers from bottom to top, from top to bottom, and from bottom to top again. Finally tie the upper and lower ends with cable ties. Then use cable ties to secure the both ends.
4. Cover the rest of the cabling in a conduit or with protective waterproof rubber tape. Make a drip loop as shown below to create an artificial lowest point of the cable.



Desiccant Bag Replacement

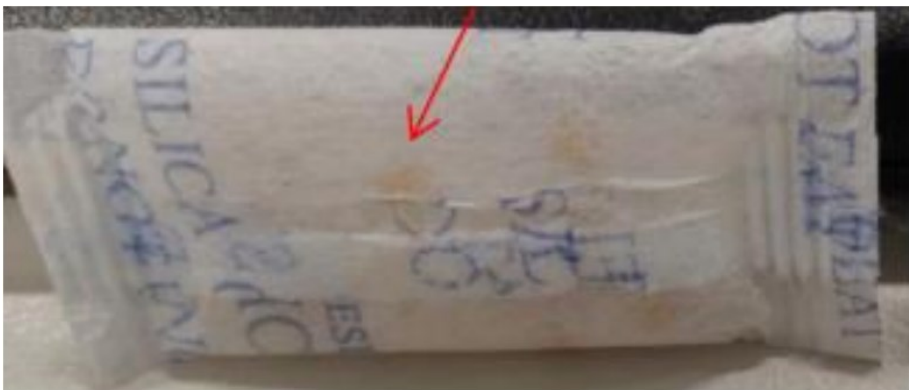


If the camera is experiencing fogging, you will need to replace the existing desiccant bag (The rectangular object inside the camera frame).

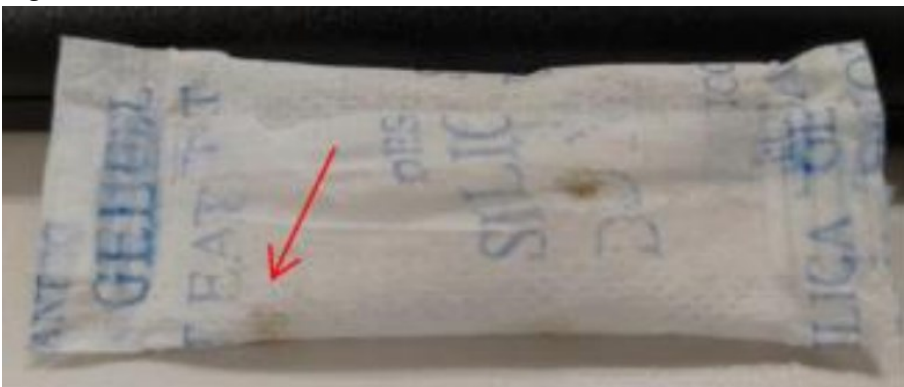
Identification of Desiccant Bag's Functionality

The remained functionality of the desiccant bag can be identified by the color of the silica gel beads among the desiccant, which are:

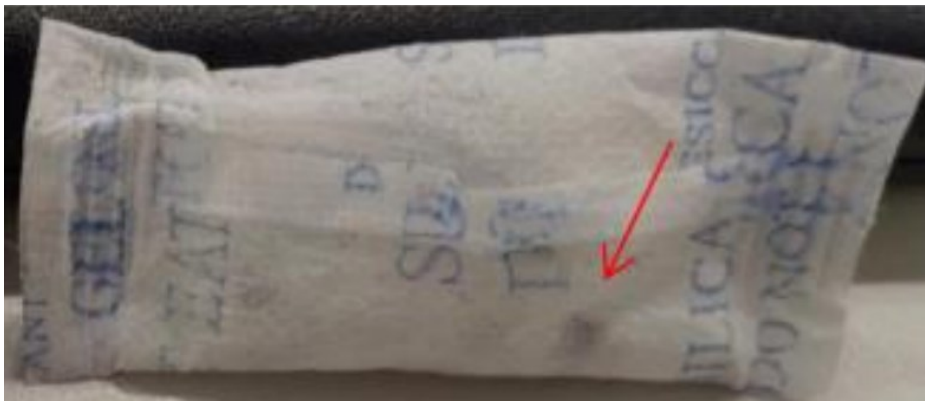
Bright Yellow – Dry



Light Green – Some moisture is absorbed



Dark Green – A considerable amount of moisture was absorbed



To replace the desiccant bag, please follow the steps mentioned in the following sections, and the procedures should be done by the engineering staff.

Replace the Desiccant Bag

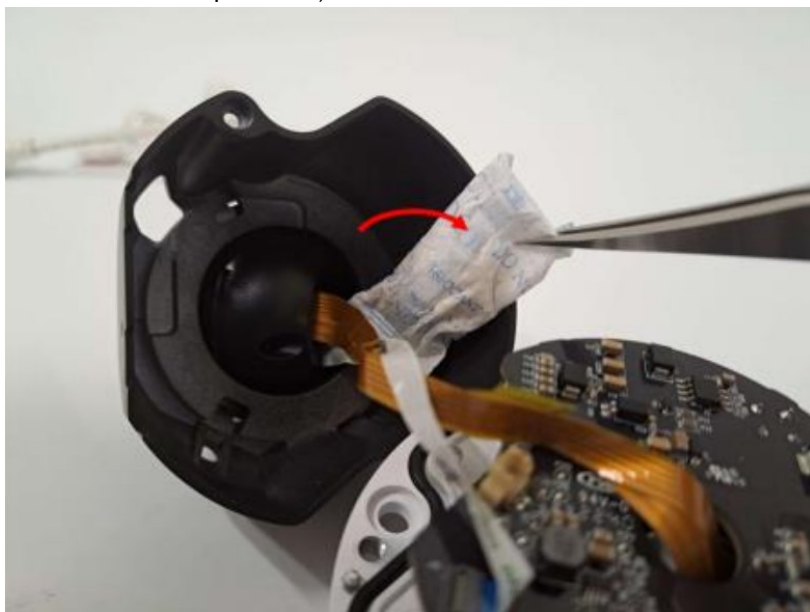
Step1

Open the housing and the BoxPan of camera and locate the desiccant bag. The desiccant bag will be attached to the inner surface of the BoxPan. (For more information, please refers to the user's manual of your camera model.)



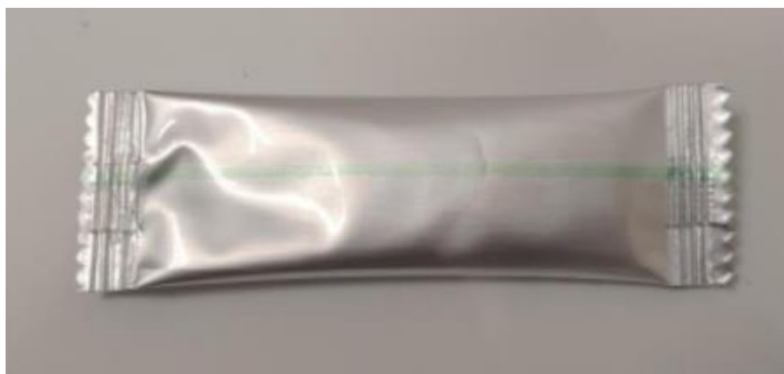
Step2

Remember the place of desiccant bag and remove it. (Note: Be careful, do not exert any pressure in the camera lens or other components.)



Step3

Open the aluminum foil pack that is included in the camera box. The desiccant bag is included inside it.



Step4

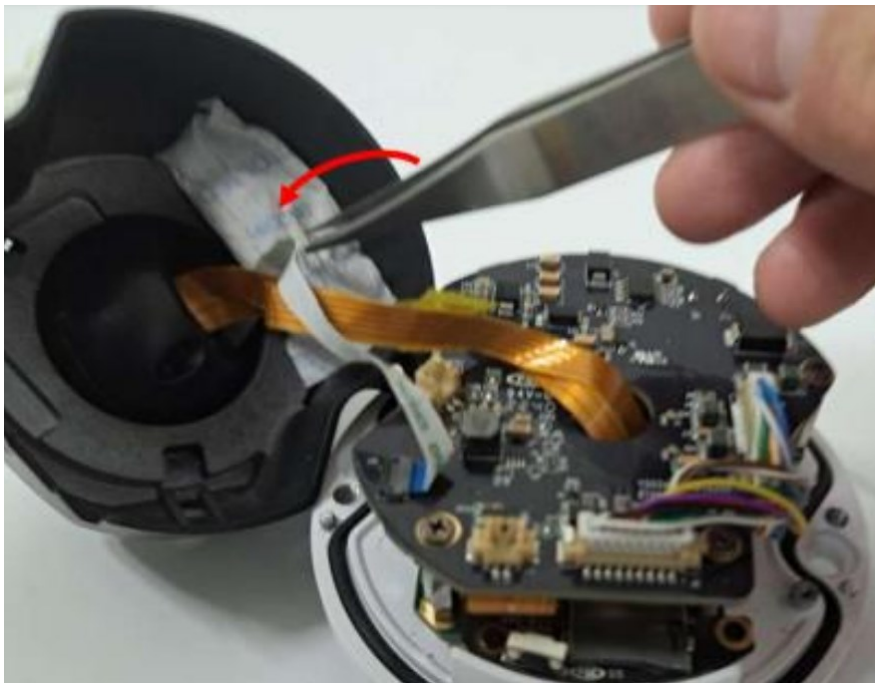
Stick a double-sided tape on desiccant bag. Pull the adhesive tape cover in order to attach the desiccant bag to the camera.

(Note: Some of desiccant bags already stick a double -side tape, so just remove the tape cover then attach the desiccant bag to the housing.)



Step5

Place the desiccant bag to the same place as the old one. Be sure to press it tightly so that it won't fall after.



Step6.

Put back the BoxPan & housing of the camera as soon as the bag is replaced. (If you leave it open too long, the desiccant bag will start absorbing water from the environment.)



Step7

Be sure the housing is closed tightly



Check Item

Please confirm the following to ensure that the equipment is installed correctly.


| Check Item | Result | |
|--|--------|----|
| All screw fully tightened | YES | NO |
| The camera is securely installed to the mount or wall | YES | NO |
| The ambient temperature meets the device specifications. | YES | NO |
| Insulation and waterproofing measures have been taken to protect cables installed in humid environments, and the drip loops are incorrect positions. | YES | NO |
| The camera can power on normally. | YES | NO |
| You can access the camera web portal using the IP address you configured. | YES | NO |
| On the camera web portal, you can view live video from camera. | YES | NO |
| You can view the surveillance from camera web pages and the image is clear, as shown in the following figure. | YES | NO |
| In night vision mode, the surveillance is can be viewed clearly. | YES | NO |

Declaration of toxic and hazardous substances in electronic and electrical products

FCC compliance statement

This device complies with part 15 of the FCC Rules. Operation is subject to the following two conditions: (1) this device may not cause harmful interference, and (2) this device must accept any interference received, including interference that may cause undesired operation.

Documents / Resources

| | |
|---|---|
|  | <p>Ability VS68200 AI-Eye 8M Fixed Lens Dome Network Camera [pdf] User Guide VS68200 AI-Eye 8M Fixed Lens Dome Network Camera, VS68200, AI-Eye 8M Fixed Lens Dome Network Camera, Lens Dome Network Camera, Network Camera</p> |
|---|---|