



# abi ATTACHMENTS TR3 Rake Tractor Implement Installation Guide

[Home](#) » [abi ATTACHMENTS](#) » [abi ATTACHMENTS TR3 Rake Tractor Implement Installation Guide](#) 

## Contents

- [1 abi ATTACHMENTS TR3 Rake Tractor Implement](#)
- [2 Specifications](#)
- [3 Safety Precautions](#)
  - [3.1 Safety](#)
  - [3.2 CALIFORNIA PROPOSITION 65](#)
- [4 Components](#)
- [5 Initial Setup](#)
- [6 Attaching & Using Optional Parts](#)
  - [6.1 Attaching & Using The TR3 Profiler Attachment](#)
- [7 How To Attach The Profiler](#)
- [8 Attaching & Using The TR3 Rolling Basket](#)
- [9 Adjusting The Rolling Basket For Use](#)
- [10 Customer Support](#)
- [11 Documents / Resources](#)
  - [11.1 References](#)
- [12 Related Posts](#)



**abi ATTACHMENTS TR3 Rake Tractor Implement**



Welcome To The Family! On behalf of the ABI family we would like to thank you for your recent purchase of your TR3. We exist to provide you, our customer; with innovative, quality tools that empower you with better ways to get outdoor work done.

### **Model and Serial Number**

- Model Number:
- Serial Number:
- Invoice Number:
- Purchasers Name:

### **Note To Operator**

The information presented in this manual will prepare you to operate the TR3 in a safe and knowledgeable manner. Operating the TR3 in a proper manner will provide a safer working environment and create a more efficient result. Read this manual fully and understand the entire manual prior to setup, operation, adjusting, performing maintenance, or storing TR3. This manual contains information that will allow you the operator to get years of dependable performance from the TR3. This manual will provide you with information on safely operating and maintaining the TR3. Operating the TR3 outside of the stated safety and operations guidelines may result in injury to operator and equipment or void the warranty. The information provided in this manual was current at the time of printing. Variations may be present as ABI Attachments continues to improve and upgrade the TR3 for future use. ABI Attachments, Inc. reserves the right to implement engineering and design changes to the TR3 as may be necessary without prior notification.

### **Specifications**

PART #	TR35.5	TR36.5	TR37.5	TR38.5	TR310
Width	5.5'	6.5'	7.5'	8.5'	10'
Weight	616 lbs.	774 lbs.	920 lbs.	1,105 lbs.	1,230 lbs.
# of Scarifiers	5	6	8	10	12
Profile Ready	NO	YES	YES	YES	YES
Hitch CAT	0 & 1	1	1	1 OR 2	2
Min. H.P.	23 H.P.	27 H.P.	35 H.P.	48 H.P.	60+ H.P.
Warranty	1 YEAR LIMITED				

## Safety Precautions

**CAUTION:** Our machines are designed considering safety as the most important aspect and are the safest available in today's market. Unfortunately, human carelessness can override the safety features built into our machines. Injury prevention and work safety, aside from the features on our tools, are very much due to the responsible use of the equipment. It must always be operated prudently following with great care, the safety instructions laid out in this manual.

- Before operating equipment, read and understand the operator's manual.
- Thoroughly inspect the implement before initial operation to assure that all packaging materials, i.e., wires, bands, and tape have been removed.
- Personal protection equipment including safety glasses, safety shoes, and gloves are recommended during assembly, installation, operation, adjustment, maintaining and/or repairing the implement.
- Operate the implement only with a tractor equipped with an approved Roll-Over-Protective-System (ROPS). Always wear your seat belt. Serious injury or even death could result from falling off the tractor.
- Operate the TR3 in the daylight or under good artificial light. Operator should always be able to clearly see where they are going.
- Ensure the implement is properly mounted, adjusted and in good operating condition.
- As with all arena dragging equipment, always ensure footing material in the arena is at a consistent depth, if an arena base is installed, before engaging subsurface implements. If the footing layer depth is not consistent, you could damage your arena base layer.
- Double check implement depth into the footing to ensure it will NOT go below the footing layer into the base layer of the arena. (If base exists) This double check must be completed upon entering the arena and again after pulling forward a short distance, to remove any slack from pins and linkages, after each time the implement or linkages are adjusted.

## Operation Safety

- The use of this equipment is subject to certain hazards which cannot be prevented by mechanical means or product design.
- All operators of this equipment must read and understand this manual, paying particular attention to safety and operating instructions, prior to using.

- Do not operate the tractor/ATV/UTV and implement when you are tired, sick, or when using medication.
- Keep all helpers and bystanders at least 50 feet away from the machine. Only properly trained people should operate this machine.
- The majority of accidents involve operators being knocked off the tractor by low hanging limbs and then being run over by the implement. Accidents are most likely to occur with machines that are loaned or rented to someone who has not read the operator's manual and is not familiar with the implement.
- Always stop the tractor/ATV/UTV, set brake, shut off the engine, remove the ignition key, lower implement to the ground, and allow rotating parts to come to a complete stop before dismounting tow vehicle. Never leave equipment unattended with the tow vehicle running.
- Never place hands or feet under implement with tractor engine running or before you are sure all motion has stopped. Stay clear of all moving parts.
- Do not reach or place yourself under equipment until it is blocked securely.
- Do not allow riders on the implement or tractor at any time. There is no safe place for riders.
- Never place hands or feet under implement with tractor/ATV/UTV engine running or before you are sure all motion has stopped. Stay clear of all moving parts.
- Before backing up, disengage the implement from the ground and look behind carefully.
- Keep hands, feet, hair, and clothing away from moving parts.
- Never operate tractor and implement under trees with low hanging limbs. Operators can be knocked off the tractor and then run over by implement.
- Stop implement immediately upon striking an obstruction. Turn engine off, remove key, inspect and repair any damage before resuming operation.
- Stay alert for holes, rocks, and roots in the terrain and other hidden hazards. Keep away from drop-offs.
- Use extreme care and maintain minimum ground speed when transporting over a hillside, over rough ground, and when operating close to ditches or fences. Be careful when turning sharp corners.
- Reduce speed on slopes and sharp turns to minimize tipping or loss of control. Be careful when changing directions on slopes.
- Inspect the entire machine periodically. Look for loose fasteners, worn or broken parts, and leaky or loose fittings.
- Pass diagonally through sharp dips and avoid sharp drops to prevent "hanging up" tractor and implement.
- Avoid sudden starts and stops while traveling up or downhill.
- Always use down slopes; never across the face. Avoid operation on steep slopes. Slow down on sharp turns and slopes to prevent tipping and/or loss of control.

## **Safety**

**WARNING!** The SAFETY ALERT SYMBOL indicates there is a potential hazard to personal safety involved and extra safety precaution must be taken. When you see this symbol, be alert and carefully read the message that follows it. In addition to design and configuration of equipment, hazard control, and accident prevention are dependent upon the awareness, concern, prudence, and proper training of personnel involved in the operation, transport, maintenance, and storage of equipment

## **CALIFORNIA PROPOSITION 65**

WARNING! Cancer and reproductive harm- [www.P65Warnings.ca.gov](http://www.P65Warnings.ca.gov)

## **SAFETY AT ALL TIMES**

Careful operation is your best assurance against an accident. All operators, no matter how much experience they may have, should carefully read this manual and other related manuals, or have the manuals read to them, before operating the tow vehicle and this implement.

- Thoroughly read and understand the “Safety Label” section. Read all instructions noted on them.
- Do not operate the equipment while under the influence of drugs or alcohol as they impair the ability to safely and properly operate the equipment.
- The operator should be familiar with all functions of the tow vehicle and attached implement and be able to handle emergencies quickly.
- Make sure all guards and shields appropriate for the operation are in place and secured before operating implement.
- Keep all bystanders away from equipment and work area.
- Start tow vehicle from the driver’s seat with hydraulic controls in neutral.
- Operate tow vehicle and controls from the driver’s seat only.
- Never dismount from a moving tow vehicle or leave tow vehicle unattended with engine running.
- Do not allow anyone to stand between tow vehicle and implement while backing up to implement. Keep hands, feet, and clothing away from power-driven parts.
- While transporting and operating equipment, watch out for objects overhead and along side such as fences, trees, buildings, wires, etc.
- Do not turn tow vehicle so tight as to cause hitched implement to ride up on the tow vehicle’s rear wheel.
- Store implement in an area where children normally do not play. When needed, secure attachment against falling with support blocks.

## **SAFETY PRECAUTIONS FOR CHILDREN**

Tragedy can occur if the operator is not alert to the presence of children. Children generally are attracted to implements and their work.

- Never assume children will remain where you last saw them.
- Keep children out of the work area and under the watchful eye of a responsible adult.
- Be alert and shut the implement and tractor down if children enter the work area.
- Never carry children on the tractor or implement. There is not a safe place for them to ride. They may fall off and be run over or interfere with the control of the tow vehicle. Never allow children to operate the tow vehicle, even under adult supervision.
- Never allow children to play on the tow vehicle or implement.
- Use extra caution when backing up. Before the tractor starts to move, look down and behind to make sure the area is clear.

## **SHUTDOWN & STORAGE**

- If engaged, disengage power take-off.
- Park on solid, level ground and lower implement to ground or onto support blocks.
- Put tractor in park or set park brake, turn off engine, and remove switch key to prevent unauthorized starting. Relieve all hydraulic pressure to auxiliary hydraulic lines. Wait for all components to stop before leaving operators seat.
- Use steps, grab-handles and anti-slip surfaces when stepping on and off the tractor.

- Detach and store implement in an area where children normally do not play.
- Secure implement using blocks and supports.

## **TIRE SAFETY**

- Tire changing can be dangerous and must be performed by trained personnel using the correct tools and equipment.
- Always maintain correct tire pressure. Do not inflate tires above recommended pressures shown in the Operators Manual.
- When inflating tires, use a clip-on chuck and extension hose long enough to allow you to stand to one side and NOT in front of or over the tire assembly. Use a safety cage if available.
- Securely support the implement when changing a wheel.
- When removing and installing wheels, use wheel handling equipment adequate for the weight involved.
- Make sure wheel bolts have been tightened to the specified torque. Some attachments may have foam or sealant inside them and must be disposed of properly.

## **TRANSPORT SAFELY**

- Comply with federal, state, and local laws.
- Use towing vehicle and trailer of adequate size and capacity. Secure equipment towed on a trailer with tie downs and chains.
- Sudden braking can cause a towed trailer to swerve and upset. Reduce speed if towed trailer is not equipped with brakes.
- Avoid contact with any overhead utility lines or electrically charged conductors.
- Always drive with load on end of loader arms low to the ground. Always drive straight up and down steep inclines with heavy end of a tow vehicle with loader attachment on the up hill side.
- Engage park brake when stopped on an incline.
- Maximum transport speed for an attached equipment is 20 mph. DO NOT EXCEED. Never travel at a speed which does not allow adequate control of steering and stopping. Some rough terrains require a slower speed.
- As a guideline, use the following maximum speed weight ratios for attached equipment:
  - 20 mph when weight of attached equipment is less than or equal to the weight of machine towing the equipment.
  - 10 mph when weight of attached equipment exceeds weight of machine towing equipment but not more than double the weight.
- **IMPORTANT:** Do not tow a load that is more than double the weight of the vehicle towing the load.

## **PRACTICE SAFE MAINTENANCE**

- Understand procedure before doing work. Refer to the Operator's Manual for additional information. Work on a level surface in a clean dry area that is well-lit.
- Lower implement to the ground and follow all shutdown procedures before leaving the operator's seat to perform maintenance.
- Do not work under any hydraulic supported equipment. It can settle, suddenly leak down, or be lowered accidentally. If it is necessary to work under the equipment, securely support it with stands or suitable blocking

beforehand.

- Use properly grounded electrical outlets and tools.
- Use correct tools and equipment for the job that are in good condition. Allow equipment to cool before working on it.
- Disconnect battery ground cable (-) before servicing or adjusting electrical systems or before welding on implement.
- Inspect all parts. Make certain parts are in good condition & installed properly.
- Replace parts on this implement with genuine ABI Attachments parts only.
- Do not alter this implement in a way which will adversely affect its performance.
- Do not grease or oil implement while it is in operation.
- Remove buildup of grease, oil, or debris.
- Always make sure any material and waste products from the repair and maintenance of the implement are properly collected and disposed. Remove all tools and unused parts before operation.

## **PREPARE FOR EMERGENCIES**

- Be prepared if a fire starts. Keep a first aid kit and fire extinguisher handy.
- Keep emergency numbers for doctor, ambulance, hospital, and fire department near phone.

## **USE SAFETY LIGHTS AND DEVICES**

- Slow moving tractors, skid steers, self-propelled machines, and towed equipment can create a hazard when driven on public roads. They are difficult to see, especially at night. Use the Slow Moving Vehicle sign (SMV) when on public roads.
- Flashing warning lights and turn signals are recommended whenever driving on public roads.

## **AVOID UNDERGROUND UTILITIES**

- Dig Safe, Call 811 (USA). Always contact your local utility companies (electrical, telephone, gas, water, sewer, and others) before digging so that they may mark the location of any underground services in the area.
- Be sure to ask how close you can work to the marks they positioned.

## **USE SEAT BELT AND ROPS**

- ABI Attachments recommends the use of a CAB or roll-over protective structures (ROPS) and seat belt in almost all tow vehicles. Combination of a CAB or ROPS and seat belt will reduce the risk of serious injury or death if the tow vehicle should be upset.
- If ROPS is in the locked-up position, fasten seat belt snugly and securely to help protect against serious injury or death from falling and machine overturn.

## **AVOID HIGH PRESSURE FLUIDS HAZARD**

- Escaping fluid under pressure can penetrate the skin causing serious injury.
- Before disconnecting hydraulic lines or performing work on the hydraulic system, be sure to release all residual

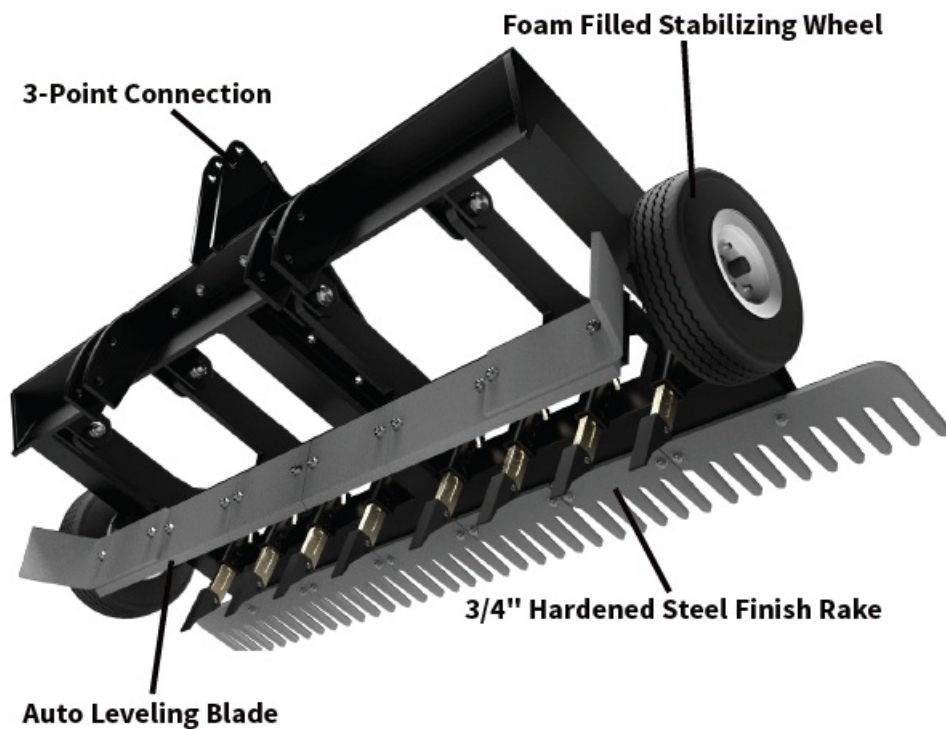
pressure. Make sure all hydraulic fluid connections are tight and all hydraulic hoses and lines are in good condition before applying pressure to the system.

- Use a piece of paper or cardboard, NOT BODY PARTS, to check for suspected leaks.
- Wear protective gloves and safety glasses or goggles when working with hydraulic systems.
- DO NOT DELAY. If an accident occurs, see a doctor familiar with this type of injury immediately. Any fluid injected into the skin or eyes must be treated within a few hours or gangrene may result.

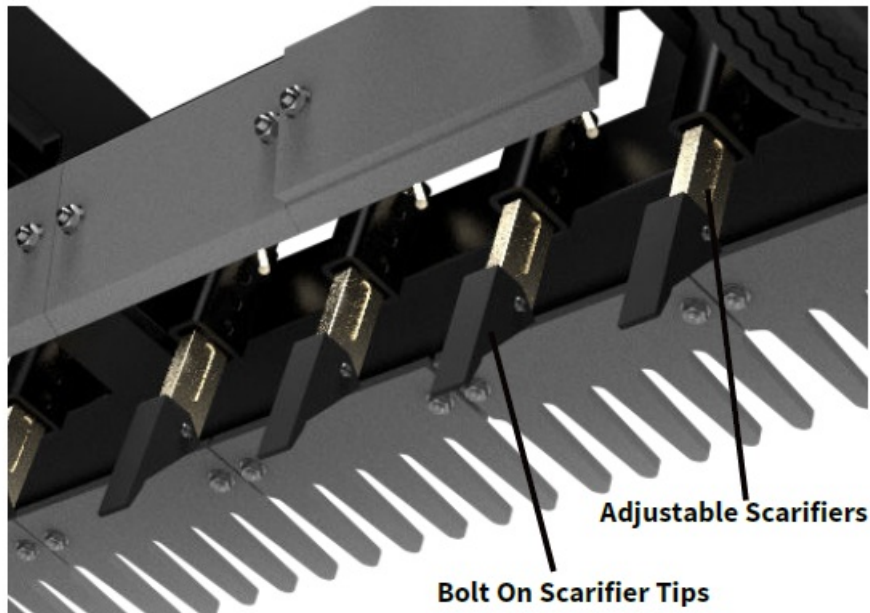
## **KEEP RIDERS OFF MACHINERY**

- Never carry riders on tractor or implement.
- Riders obstruct operators view and interfere with the control of the tow vehicle.
- Riders can be struck by objects or thrown from the equipment. Never use tractor or implement to lift or transport riders.

## **Components**

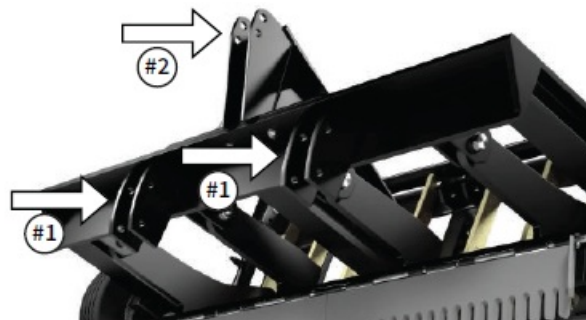






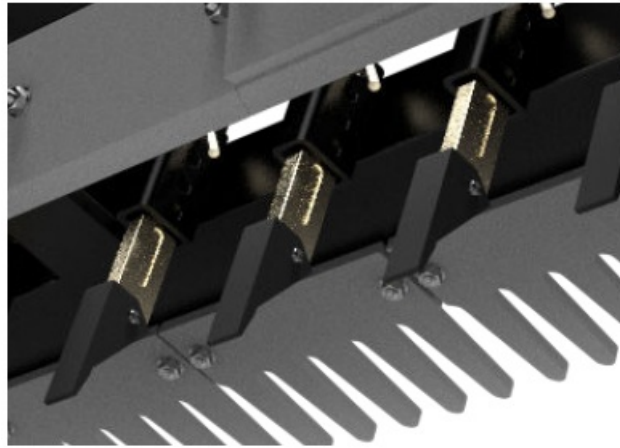
## Initial Setup

1. **Step 1:** Attach the tractor to the lower arms indicated by arrow #1 in the picture. There are two connecting holes on the TR3 for the bottom arms of the tractor to attach to. If the TR3 is connected to the bottom holes, then make sure to connect the Top Link in the bottom holes on the mast shown by the arrow labeled #2. If the lower arms of the tractor are connected to the TR3 in the top hole, connect the Top Link using the top hole as well. The Top Link is shown in Fig. 1.



**NOTE:** Ensure the Draw Bar on the Tractor is pushed in before hooking up the TR3 to the Tow Vehicle. Make sure the bottom 3 point arms are set to the same length, and that the Tractor sway bars are fully locked on the bottom 3 point arms prior to operation.

2. **Step 2:** Make sure that the Scarifiers are pinned in the first hole or above on top of the Scarifier Tube for the setup process. The Scarifier tube has 4 holes in it, allowing the Scarifier's to be adjusted to the depth desired for ripping with the TR3. For setup purposes the Scarifier's should be pinned up, so that the TR3 can be properly leveled; without the Scarifier's hindering any adjustments.



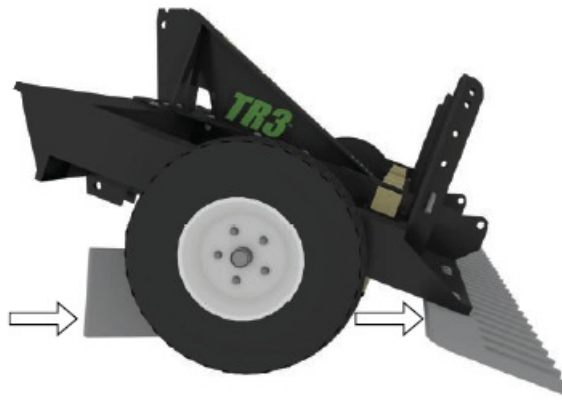
3. **Step 3:** Remove the ½" bent pins from the upright mast on the back that is locking down the leveling blade. If these pins are already up then skip this step and move on to step 4. If the pins are in place and cannot be removed from the uprights, then the TR3 may need to be lowered to the ground to take the pressure off the pins. Remove the pins and pin each one in the top hole on the uprights.



4. **Step 4:** Make sure the Stabilizing wheels are mounted in the middle hole on the tire mounted bracket. This can be adjusted later if needed. For now make sure the tire is mounted in the center hole.



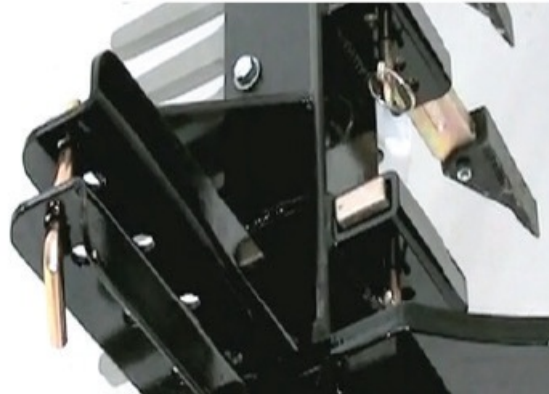
5. **Step 5:** With the TR3 and Tractor on a hard flat surface, and the Scarifiers lifted out of play, adjust the TR3 using the Top Link (shown on page 10 Step 1 Fig. 1) so that the Leveling Blade and the Finish Rake touch at the same time. Once the Leveling Blade and Finish Rake touch at the same time; lift the TR3 and set it back down. This will ensure that everything is properly adjusted. If Leveling Blade and Finish Rake are not touching at the same time continue to adjust the TR3 using the Top Link until they touch after the TR3 has been lifted and lowered. The TR3 may need to be adjusted multiple times for it to be level. Make sure to raise and lower the TR3 after every adjustment.



**NOTE:** Due to 3 point hook ups on some models of tractors, it may be necessary to move the tires on the TR3 forward or back a hole to properly adjust the TR3. If you are not able to adjust the TR3 so that the Leveling Blade and Finish Rake touch at the same time try moving the wheel forward one hole and then repeat Step 5.

### **Setting Scarifiers For Use**

Before setting the Scarifiers for use in an Arena, check the level of footing throughout the Arena. If the footing height varies throughout the Arena, it may need to be leveled, using the TR3; before using the Scarifiers. For assistance with leveling the Arena, read section Leveling an Arena below.



To move the Scarifiers up and down, raise the TR3 off the Ground. Then remove the Lynch pin from the Bent pin, remove the Bent pin. Next, move the Scarifier up or down until the holes realign at the depth desired, and reinsert the Bent pin. Secure the Bent pin by putting back in the Lynch pin. When the Scarifiers are pinned in the 2nd hole from the top on the Scarifier tube, the Scarifiers will be set to rip at about 2 – 3. Adjust the Scarifiers up or down for more or less depth, as needed for use.

### **If the leveling blade is carrying too much material.**

Adjust Top Link out to lift the Leveling Blade up more. This will put more downward pressure on the Finish Rake if this adjustment is made. If the problem continues please contact the ABI Customer Service Department for additional setup advice.

### **To carry more material**

Draw in the Top Link on the TR3. This puts more weight on the Leveling Blade allowing the Leveling Blade to move more material. Doing this will lift the Finish rake up so it will not be touching ground while grooming.

### **Pushing Material Backwards**

- Make sure the material is loose before attempting to push material with the TR3!
- Raise the TR3 off the Ground 2- 3 and extend out the Top Link until the Finish Rake is pressing on the ground firmly.
- Make sure the scarifiers are not touching the ground. The scarifiers may need to be moved up to prevent them

from contacting the ground while pushing backward with the TR3.

- Push back slowly. If you are pushing back on a hard pack surface, or area with large rocks; and you go too fast you could damage the TR3 or Tractor. Use caution to not hit large rocks, trees, or other objects that may not be movable.

Use caution when backing the TR3 into areas with embedded objects. Always use caution when pushing material backwards with the TR3.

### **Grading a Driveway**

- Make sure the TR3 is set up in the base position, or normal drag position. Next, make several passes with the Scarifiers in play to ensure the gravel is loose. The TR3 may need to the depth of the Scarifiers adjusted as passes are made to remove potholes or washouts in the driveway.
- After loosening the gravel, remove the Scarifiers from play by pinning them above the receiver. Now make a couple of passes using just the Leveling Blade and the Finish Rake. This will grade and compact the driveway, and remove all potholes and washouts.

### **Stabilizing Wheel Maintenance**

The stabilizing wheels on the TR3 should be greased every 3 months. The stabilizing wheels should also be greased before and after any period of storage.

### **Leveling An Arena**

If the Arena needs to be leveled before the use of the TR3 for the first time, or as Maintenance on the Arena over time; Go to the ABI support page

(<http://www.abisupport.com>) and watch the video listed under the TR3 called Video- How to Drag Arena. In this video there are helpful patterns to use in an Arena for leveling and maintaining the Arena. For leveling out an arena with Waves and differences in footing heights check out the Spinning Drag Pattern located at the 7:38 mark of the video. Please use caution if the Arena has a Crown in it.

### **Attaching & Using Optional Parts**

#### **Rail Blade Attachment**

- The Rail Blade attaches to the right side or left side of the Leveling Blade. To attach the Rail Blade remove the 2 bolts from the 45 degree wing and remove the wing from the Leveling Blade. Then align the Rail blade to the Leveling Blade over the Leveling Blade section on the outside. Using the same 2 bolts removed from the wing, and attach and secure the Rail Blade.
- The Rail blade will not come directly in contact with the ground when the TR3 is in the normal drag position. The Rail Blade was designed this way so that it could be attached to the TR3 while dragging the rest of the Arena, without disturbing the footing as it is groomed.”



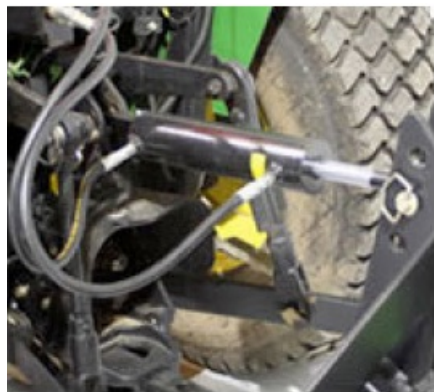
### **Rail Buster Attachment & Use**

- To attach the Rail Buster to the TR3 remove one of the stabilizing wheels on the TR3 and insert the Rail Buster in place of the stabilizing wheel.
- The Rail Buster depth can be adjusted by adjusting where the scarifier is pinned on the Scarifier tube. Adjust the scarifier to the same depth as the scarifiers on the TR3.
- The Rail Buster can be used in conjunction with the Rail Blade or separately.



### **Hydraulic Top Link Option**

Some Tractors may need an extender with the optional Hydraulic Top Link to get maximum range of movement with the Hydraulic Top Link.



- Attach the hydraulic top link to the Tractor replacing the manual top link. For tractors with enclosed mounting areas the hydraulic top link may need to be mounted with the body of the hydraulic top link attached to the TR3 with the shaft attached to the Tractor. If the hydraulic top link must be mounted with the body of the hydraulic top link on the TR3, ensure the hoses will

be long enough to reach the tractor when the hydraulic top link is fully extended before operating the TR3.

- Hook the hydraulic hoses of the hydraulic top link to the hydraulic fittings on the tractor.
- Extend out the hydraulic top link shaft so that it can be attached to the TR3/Tractor and attach using a hitch in to the TR3/Tractor. The hydraulic top link is now ready for use.

### Attaching & Using The TR3 Profiler Attachment

**NOTE:** Before using the TR3 and “Profiler” it is imperative to know the depth of the footing in the Arena. Find the shallowest spot in the Arena and set the depth of the Scarifier’s and Profile Blades to that level. This will prevent any damage to the base in the Arena.



### How To Attach The Profiler

Some Tractors may need an extender with the optional Hydraulic Top Link to get maximum range of movement with the Hydraulic Top Link.

1. **Step 1:** The profiler has three points that it attaches to the TR3 (similar to the 3 point setup on your tractor). Simply put the two hitch pins through both the outside brackets on the TR3, as well as through the outside brackets on your Profiler attachment. Then attach the 11 Top Link to the center tower on the TR3, and the center tower on the Profiler attachment as well.





2. **Step 2:** With the TR3 in base position (covered above in TR3 setup, with Scarifiers lifted out of play) and the Profile blade lifted up so that is out of play; adjust the TR3 so that the Finish Rake attached to the TR3 is roughly  $\frac{3}{4}$ " to 1" off the ground. This will allow material to properly flow through the TR3, and back to the Profiler attachment.



3. **Step 3:** Lower the Profile blades back down so they touch the ground and insert the pins back in to the Profile blade to secure it. Next, adjust the Profiler attachment using the 11" Top Link so the Profile blade sits level to the ground, or the base in the Arena. You may need to make an adjustment later to ensure that the Profile Blade is sitting level to the base.



4. **Step 4:** Place the pins on the Leveling Blade under the Leveling Blade arms. This will prevent excess material from building up on the Leveling blade due to raising the Finish Rake off the ground.



### **Checking The Profile Blade For Leveling & Depth**

Once the Profiler attachment is set up you will want to set the depth of the Profile Blades. Below are instructions on setting the depth:

- Raise the TR3 off the ground until the wheels are lifted up to match (roughly) the depth desired to use the profile blades at. If the desired grooming depth for the profile blades is about 2", then raise the TR3 until the wheels are roughly 2" off the surface. \*\*As footing becomes loosened the TR3 may rest lower in the footing.
- Remove the pins from each arm of the Profile Blade allowing it to rest on the ground. Do this for both sides of the Profile blade(s).
- Insert the pins back into the Profile Blade arms to secure the Profile Blades. There are two holes in the arms of the Profiler attachment Profile Blades. Choose the closes hole to where the desired depth of the Profile blades is, and insert the pins.

Next, take the TR3 out into the Arena and being dragging the Arena with the TR3 and Profiler attachment. Once the Scarifiers and Profile Blade(s) have entered the footing stop and check to make sure everything is at the depth desired to drag the Arena at, and that the Profile Blade is setting level to base. To check the levelness and depth of the Profile Blade, pull the footing back from the edge of one side of the Profile Blade. Continue to remove the footing until the base can be seen under the Profile Blade. Ensure that the Profile Blade is setting level to the base of the Arena and at the proper depth. If the Profile Blade is not sitting level, adjust the levelness using the 11" Top Link used to secure the Profiler attachment to the TR3. Continue dragging a few more feet, and recheck the profile blade again. You may need to make multiple adjustments to get the profile blade to sit level to the base. If you need to adjust the depth up or down repeat the above steps to set the depth of the Profile Blade.

### **Adjusting The Finish Rake On The Profiler Attachment**

- To adjust the Finish rake on the Profiler attachment, raise or lower the Finish Rake depending on the desired effect on the footing.
- There are 3 holes on the outside mast of the Profiler attachment where the Finish Rake is attached. Remove the pins holding each arm of the Finish rake in place, and raise or lower the Finish Rake depending on the effect desired for the footing. Put the Finish Rake in the top hole for the least contact with the footing. Put the



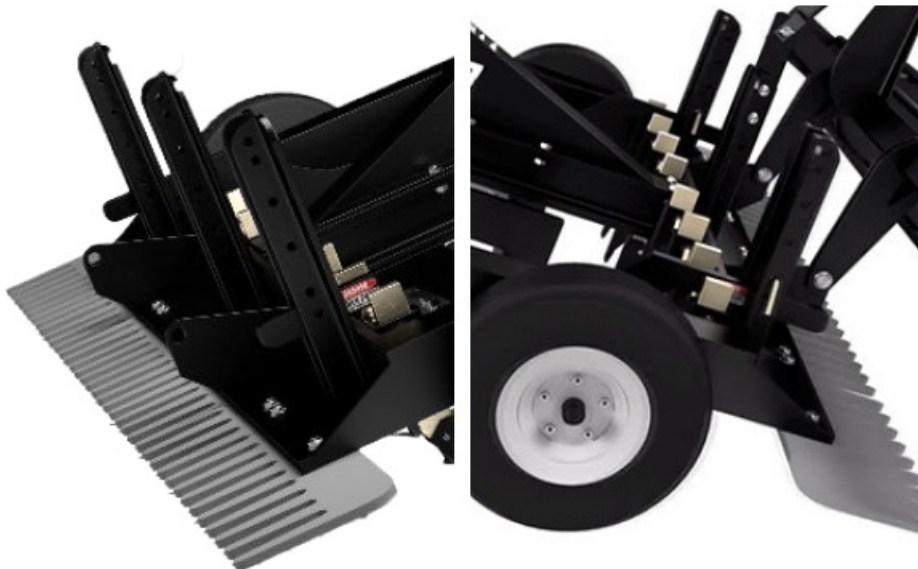
Finish Rake in the bottom hole for maximum contact with the footing.

## Attaching & Using The TR3 Rolling Basket



### How to attach the TR3 Rolling Basket

1. **Step 1:** Make sure the TR3 is setup for normal operation and is located in an area with a flat hard surface for making adjustments, refer to section Attaching and Setting up the TR3 above for information on setting up the TR3
2. **Step 2:** Next you will attach the Rolling basket starting with the bottom arms of the Rolling Basket. The bottom arms of the Rolling basket will connect to the TR3 using the pre-welded ears located on the back of the TR3 above the Finish Rake. Secure the Rolling Basket to the TR3 using the provided hardware.



3. **Step 3:** Now attach the ratcheting top link bracket on the Rolling Basket to the TR3. The ratcheting top link bracket will attach to the TR3 using the center mast on the back of the TR3. Use the provided hardware to secure the ratcheting top link to the center mast.



The ratcheting top link bracket may need to be extended to allow the bracket to be secured to the TR3. Use the center handle on the ratcheting top link to extend out the top link until the bracket is able to be secured to the center top mast on the TR3.

4. **Step 4:** Adjust the Rolling basket using the center handle for the ratcheting top link until the rolling basket is sitting off the ground and is ready for transport. The operational depth of the rolling basket will need to setup with the TR3 with the Rolling Basket in the arena.

## **Adjusting The Rolling Basket For Use**

### **1. Step 1:**

With the TR3 in the arena, and the Rolling Basket raised to clear the ground; lower the TR3 down until the wheels are resting on the surface of the arena.

### **2. Step 2:**

Using the tractor pull the TR3 forward about 3- 5' to allow the TR3 contact points to fully rest against the surface. This will allow the leveling blade, scarifiers, and finish rake to all make contact with the surface.

### **3. Step 3:**

Using the ratcheting top link between the TR3 and the Rolling Basket, adjust the Rolling Basket until it rest firmly against the surface of the Arena. **\*\*Note to Operator –** Adjust the Rolling Basket so it makes firm contact to the arena surface, but does lift the TR3 off the surface of the arena.

### **4. Step 4:**

With the Rolling Basket adjusted to sit firmly on the surface of the arena, use the tractor to pull the TR3 with the Rolling Basket adjusted forward 3- 5'.

### **5. Step 5:**

Check the arena surface behind the TR3 to ensure the desired results are achieved. The Rolling Basket may need to be adjusted further to allow for more cushion/ compaction as desired. Use the ratcheting top link to adjust the Rolling Basket until the desired results are achieved.

**NOTE:** Always adjust the Rolling Basket after making any changes to the setup of the TR3 to ensure the Rolling Basket is setup for the desired results after every adjustment.

## **Contact Information**


ABI Attachments, Inc 520 S. Byrkit Ave. Mishawaka, IN 46544

## **Customer Support**

- Email: [support@abiattachments.com](mailto:support@abiattachments.com)
- Phone: 877-788-7253
- Website: [www.abisupport.com](http://www.abisupport.com)

To order parts or to speak to one of ABI's Customer Service Representatives contact us Monday to Friday 9am to 5pm EST. The setup video and additional support material is available at [abisupport.com](http://abisupport.com) under TR3. For additional information on the use or setup of the TR3 and for TR3, TR3 Profiler, TR3 Rolling Basket Replacement Parts: Contact the ABI customer support team at 855.211.0598. Additional support videos are available at the ABI support page ([abisupport.com](http://abisupport.com)) under each tool. Warranty Information and Return Policy – Warranty and return policy information can also be found on the ABI support page under each tool. For additional questions regarding warranty or return policy, contact the ABI customer support team at 855.211.0598.

**Documents / Resources**

	<a href="#">abi ATTACHMENTS TR3 Rake Tractor Implement</a> [pdf] Installation Guide TR3 Rake Tractor Implement, Rake Tractor Implement, Tractor Implement, Implement
---	---

**References**

-  [ABI - Online Support & Service Center](#)
-  [ABI - Online Support & Service Center](#)
-  [P65Warnings.ca.gov](http://P65Warnings.ca.gov)