

**ABESTORM R
App Wi-Fi
Connection**



ABESTORM R App Wi-Fi Connection User Guide

[Home](#) » [ABESTORM](#) » ABESTORM R App Wi-Fi Connection User Guide 

Contents

- [1 ABESTORM R App Wi-Fi Connection](#)
- [2 How it works](#)
- [3 Documents / Resources](#)
 - [3.1 References](#)
- [4 Related Posts](#)



ABESTORM R App Wi-Fi Connection

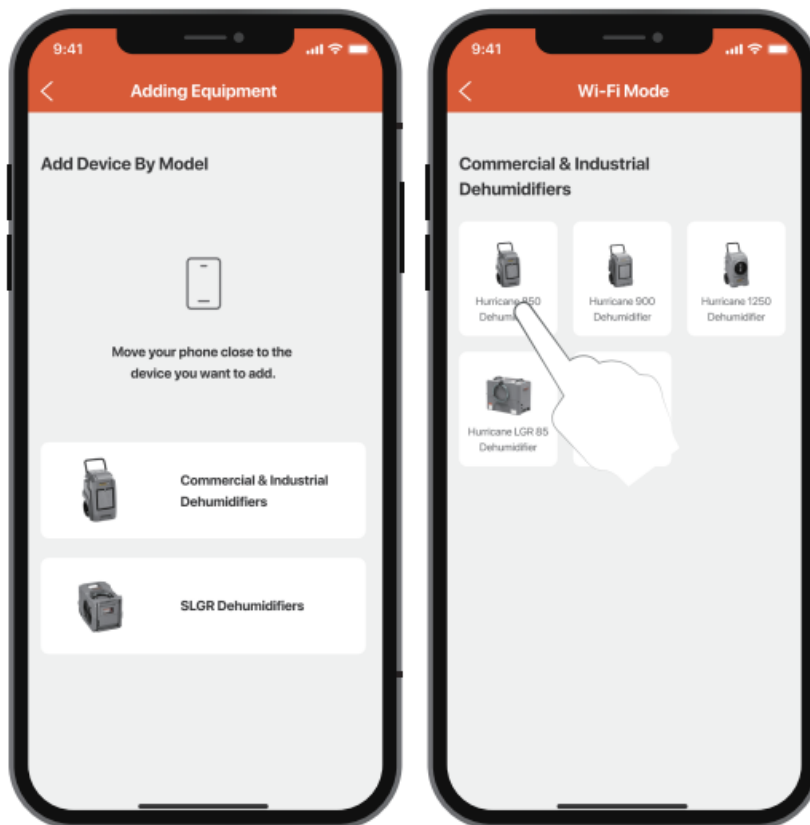


How it works

1. Sign up and login your account. Can't log in? Please make sure you enter the correct password.



2. Find your dehumidifier model. Let's take Hurricane LGR 85 Dehumidifier as an example.



3. Follow the steps on the App, press the “MENU” key of the board to switch the hotspot to “OFF”.



4. Follow the App steps to reset your device.



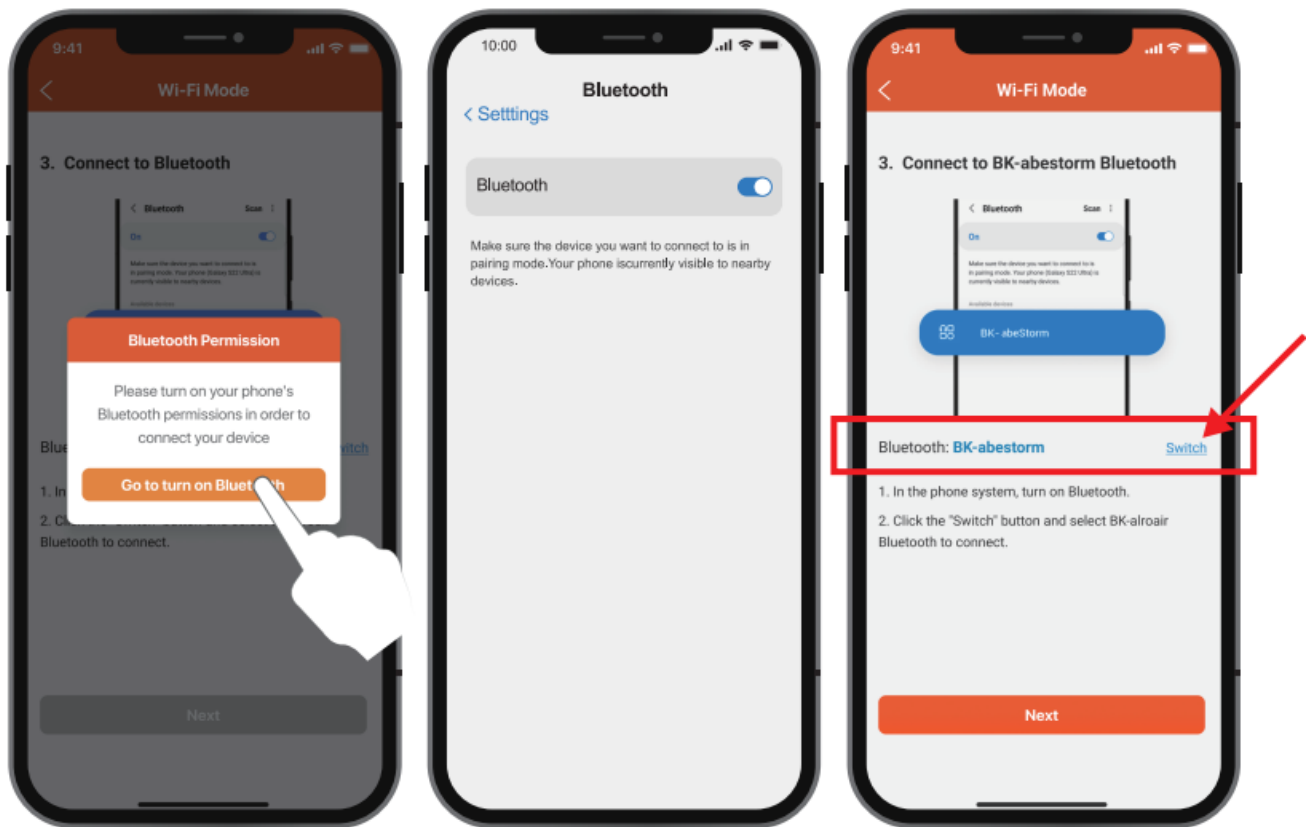
- Press the “PURGE” key and the “MENU” key at the same time for 3-5 seconds.



- After the system beeps, the WI-FI icon will start flashing on the upper right of the board.

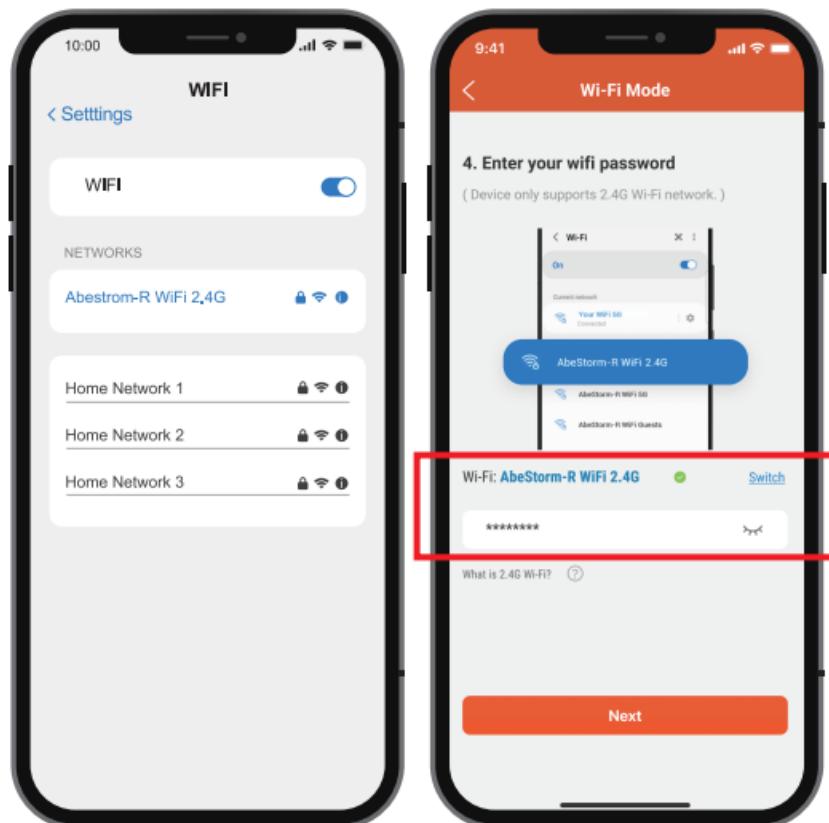


5. Turn on your phone's Bluetooth, return to the app, click the “Switch button”, and connect to the Bluetooth: BK-be storm.



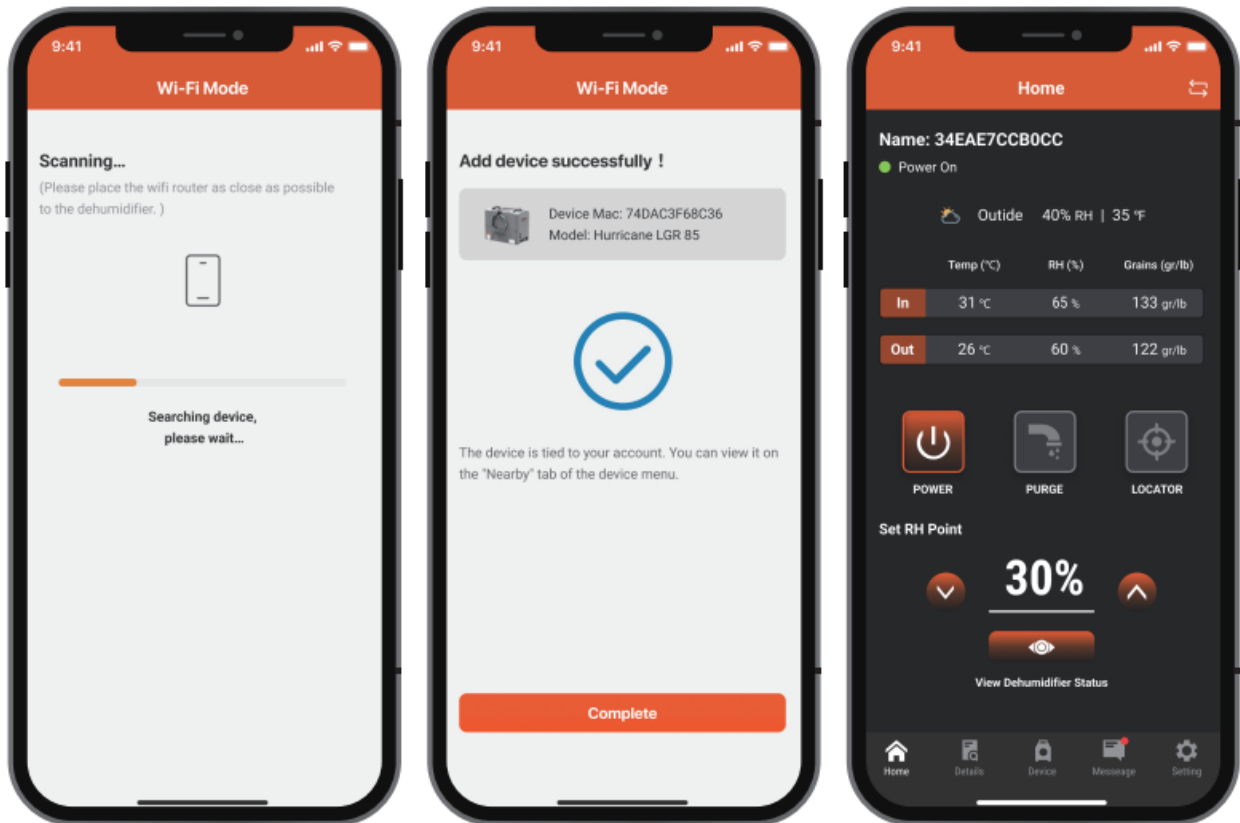
6. Connect to the home Wi-Fi.

Wrong password will cause subsequent connection failure.



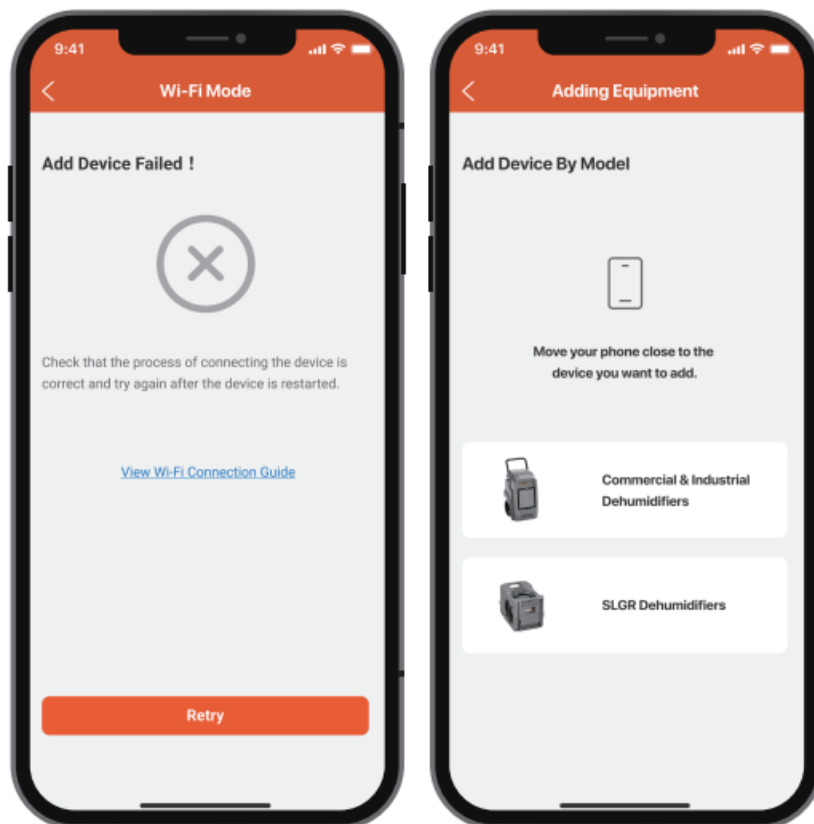
✓ Connection Succeeded

Once the app has finished Connection, you can start controlling the device.



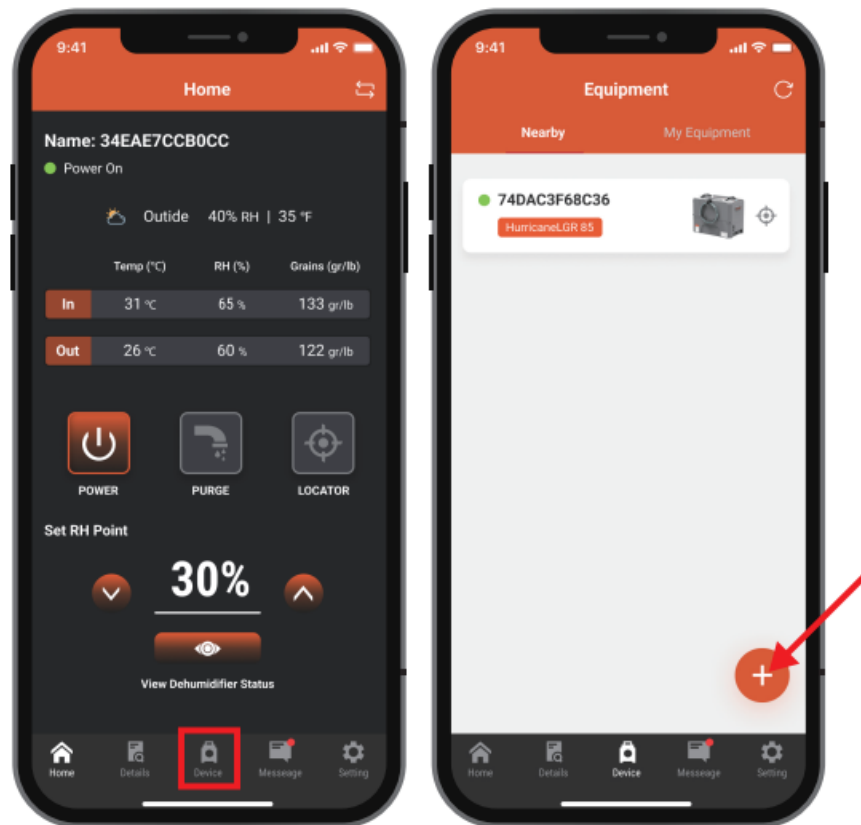
• ✗ Connection Failure

If it fails, follow the APP prompts to troubleshoot and restart the connected device.



• + Add New Device

Enter the device list, you can click the "0" button to continue adding new.



1. Download and install Abestorm -R from the App Store or Google Play Store.
2. For Android and Apple users, the operation method and process are the same.

Documents / Resources



[ABESTORM R App Wi-Fi Connection](#) [pdf] User Guide
R App Wi-Fi Connection, R App Wi-Fi Connection, Wi-Fi Connection, Connection

References

- [User Manual](#)

This website is an independent publication and is neither affiliated with nor endorsed by any of the trademark owners. The "Bluetooth®" word mark and logos are registered trademarks owned by Bluetooth SIG, Inc. The "Wi-Fi®" word mark and logos are registered trademarks owned by the Wi-Fi Alliance. Any use of these marks on this website does not imply any affiliation with or endorsement.