



**Tereno 4
Stroller**



ABC Design Tereno 4 Stroller User Manual

[Home](#) » [ABC DESIGN](#) » ABC Design Tereno 4 Stroller User Manual 

Contents

- 1 [ABC Design Tereno 4 Stroller User Manual](#)
- 2 [Assembly](#)
- 3 [Important information on the carrycot](#)
- 4 [Care instructions](#)
- 5 [Customer complaints](#)
- 6 [References](#)

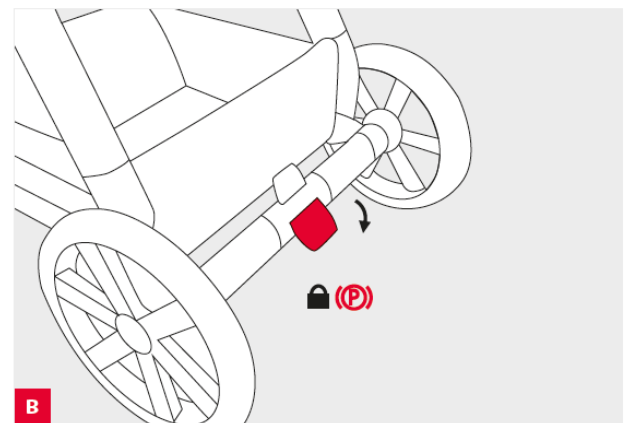
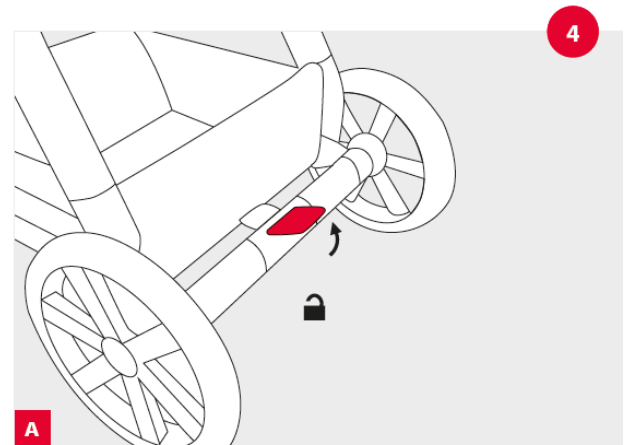
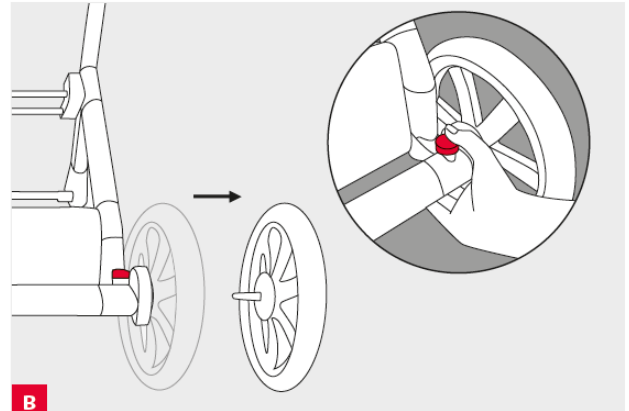
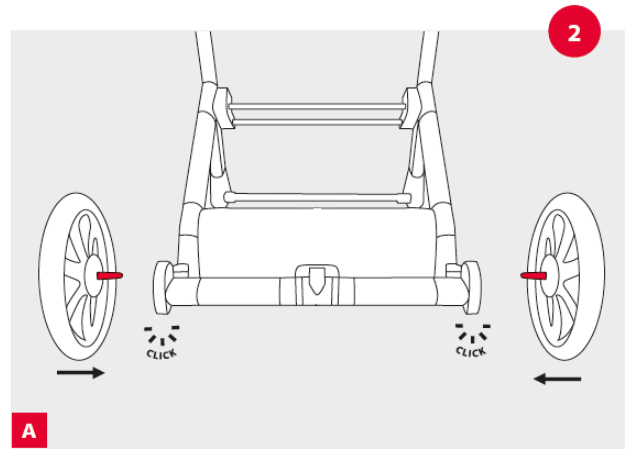
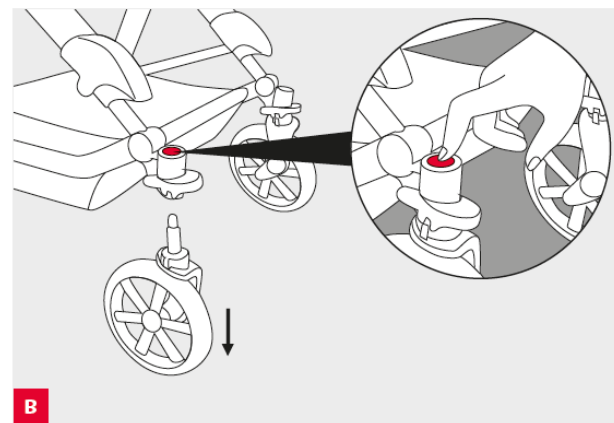
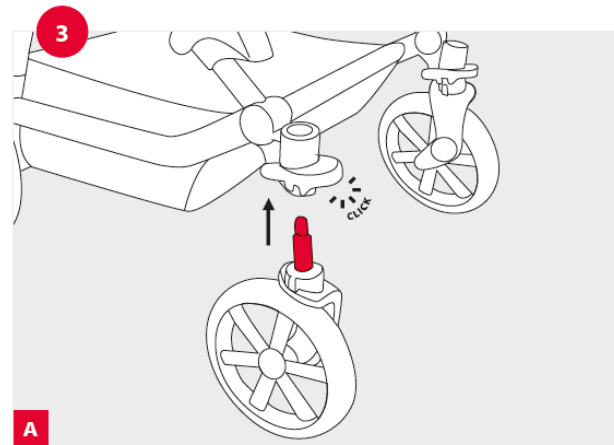
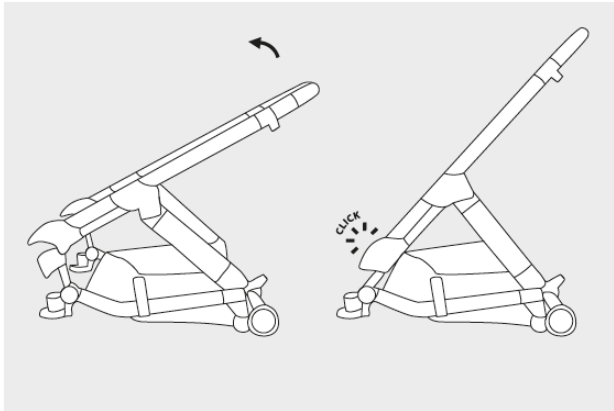
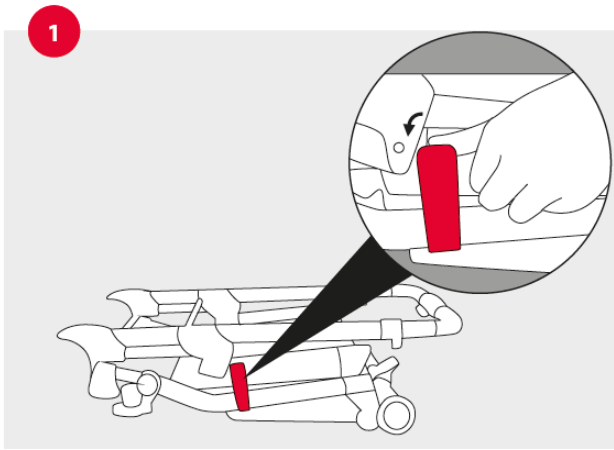


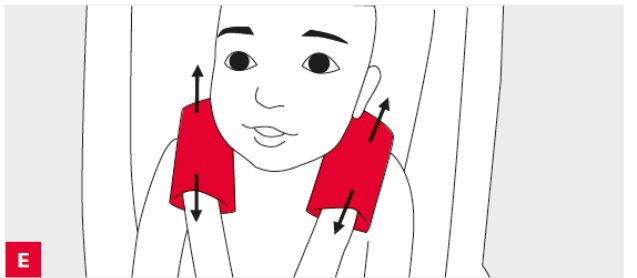
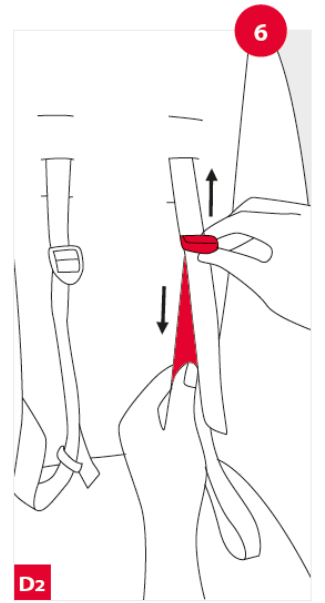
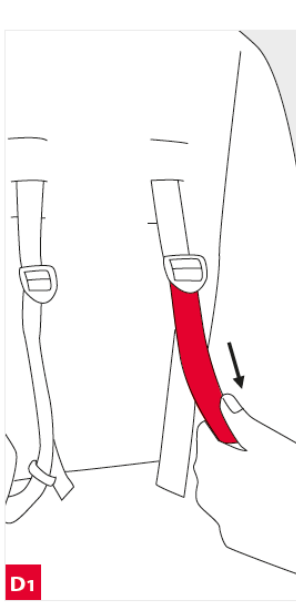
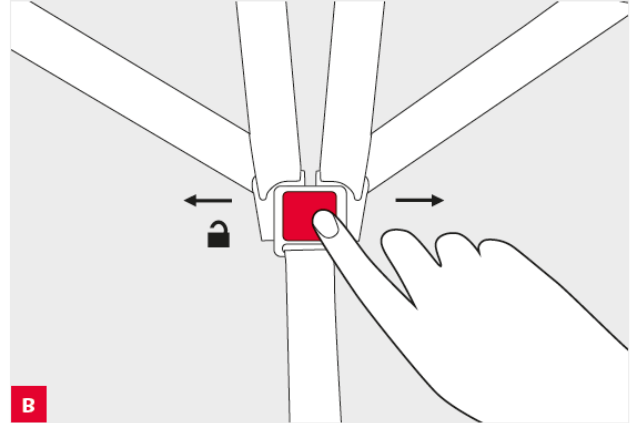
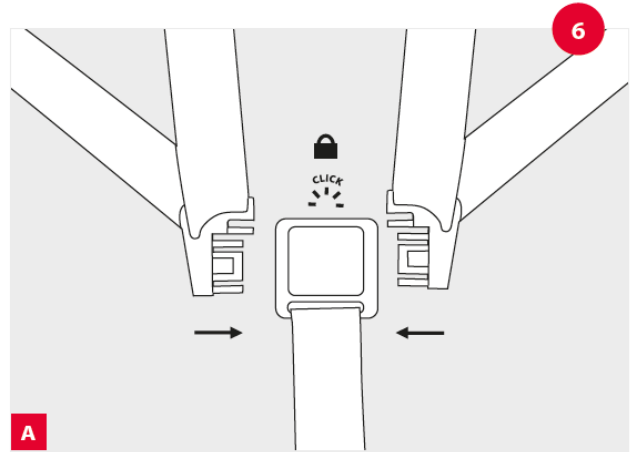
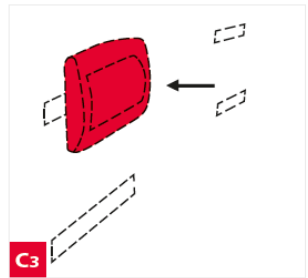
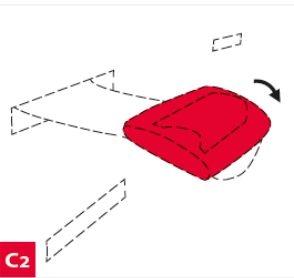
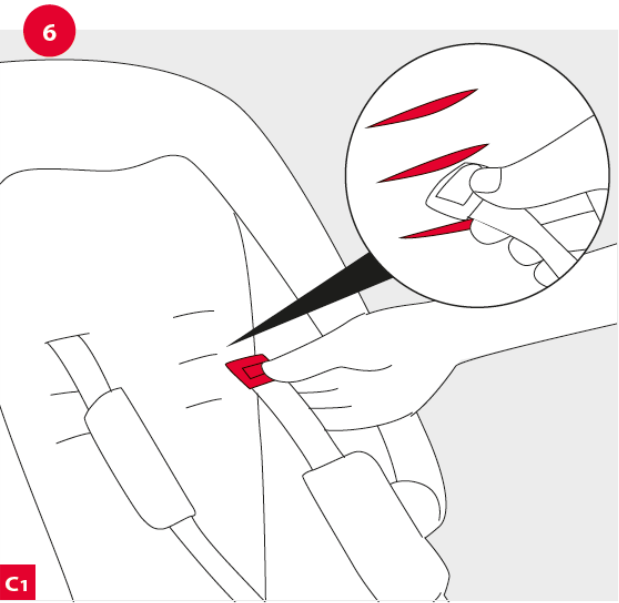
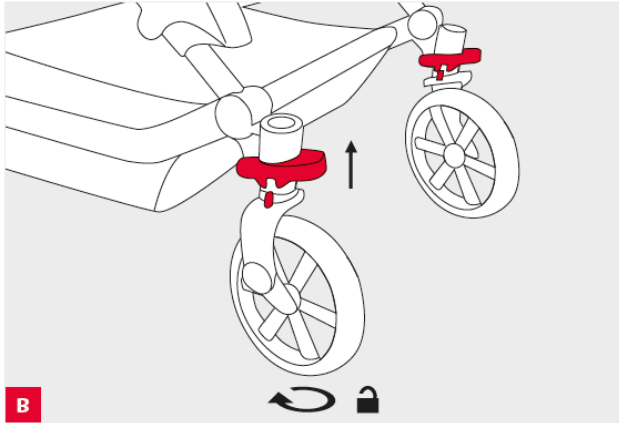
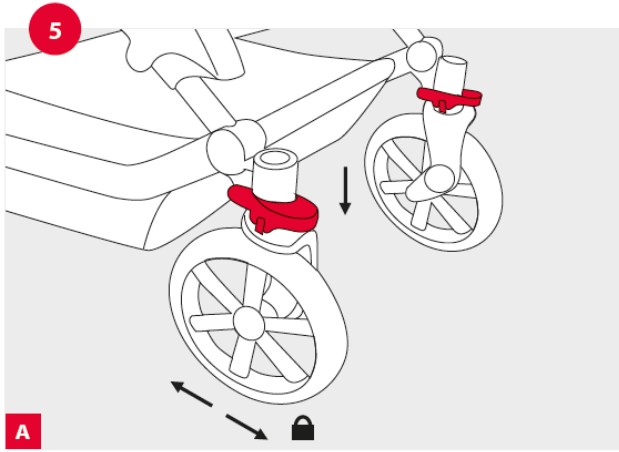
ABC Design Tereno 4 Stroller User Manual

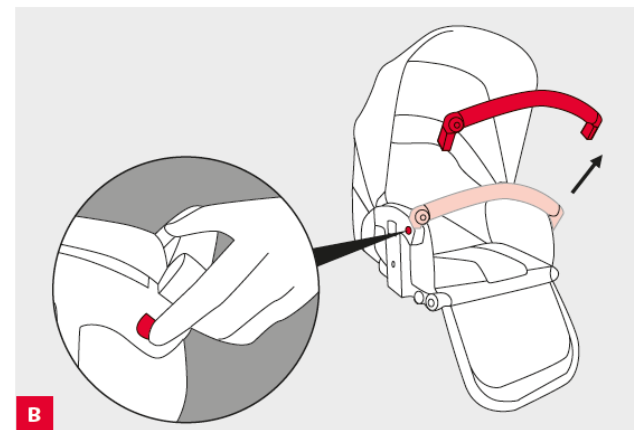
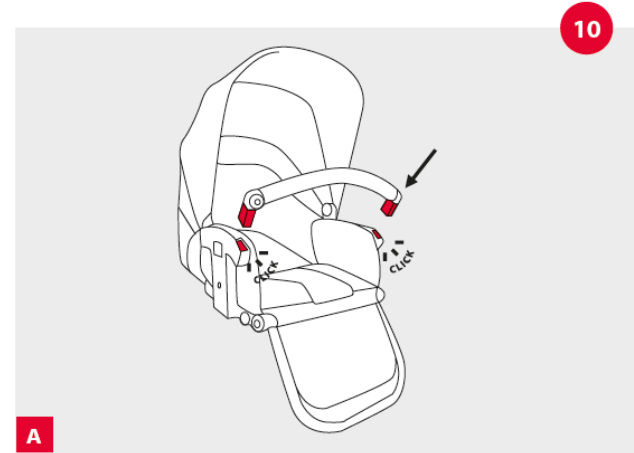
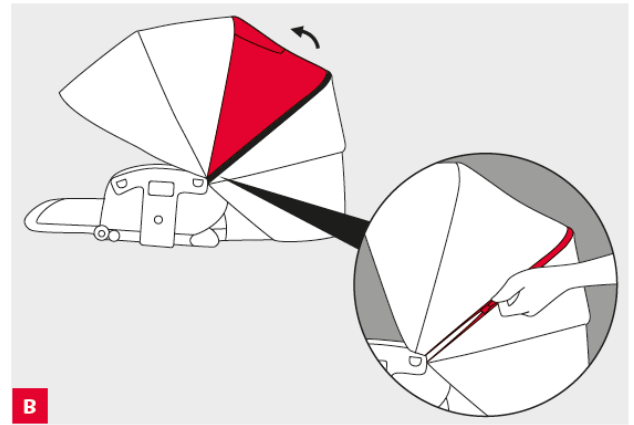
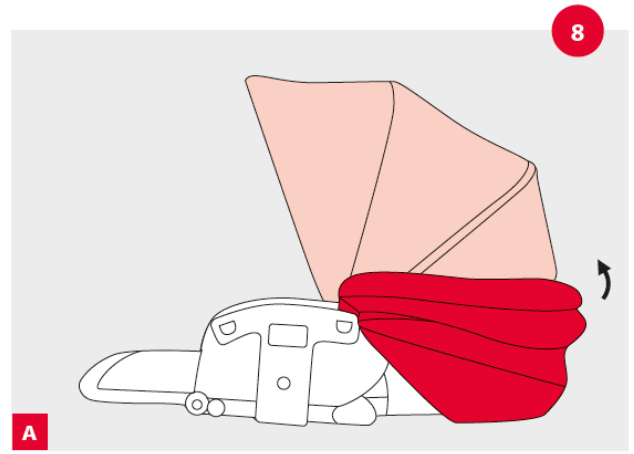
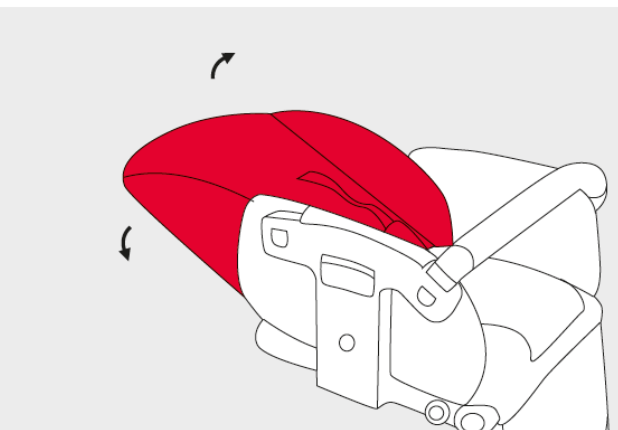
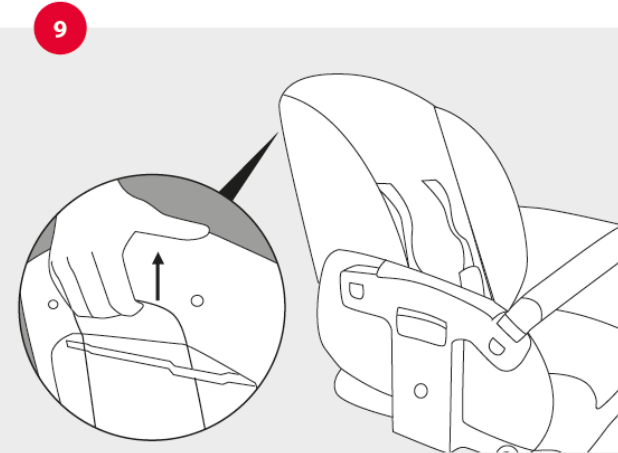
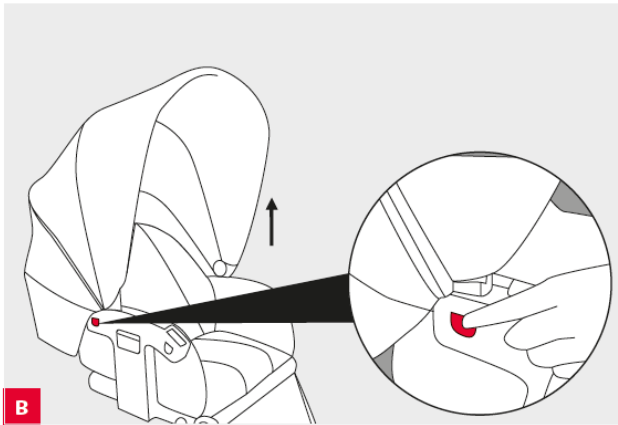
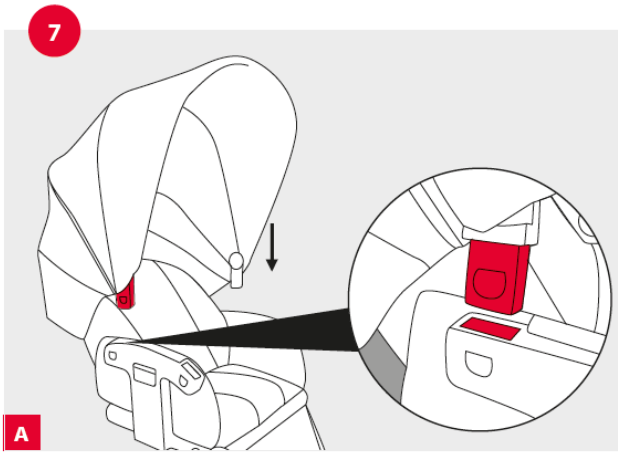


NB: Keep instructions for future reference.

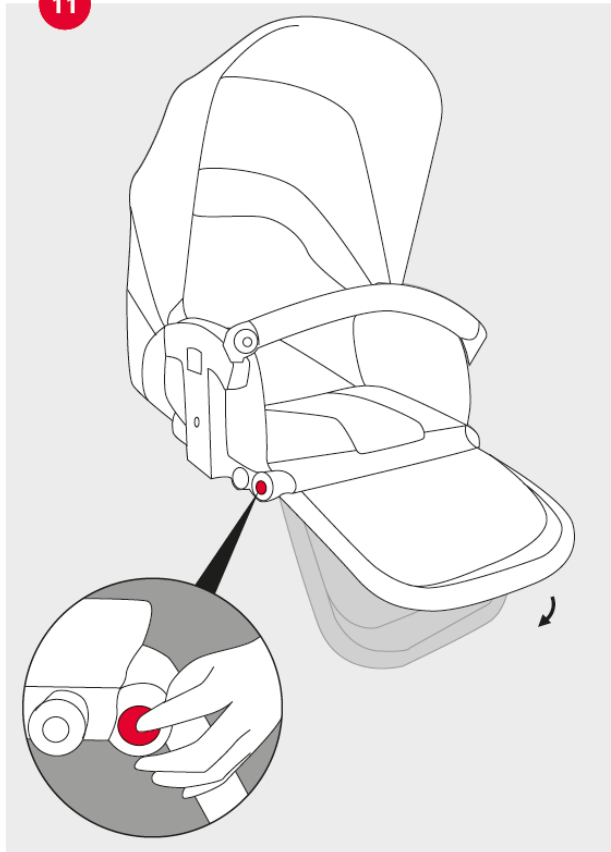
Assembly



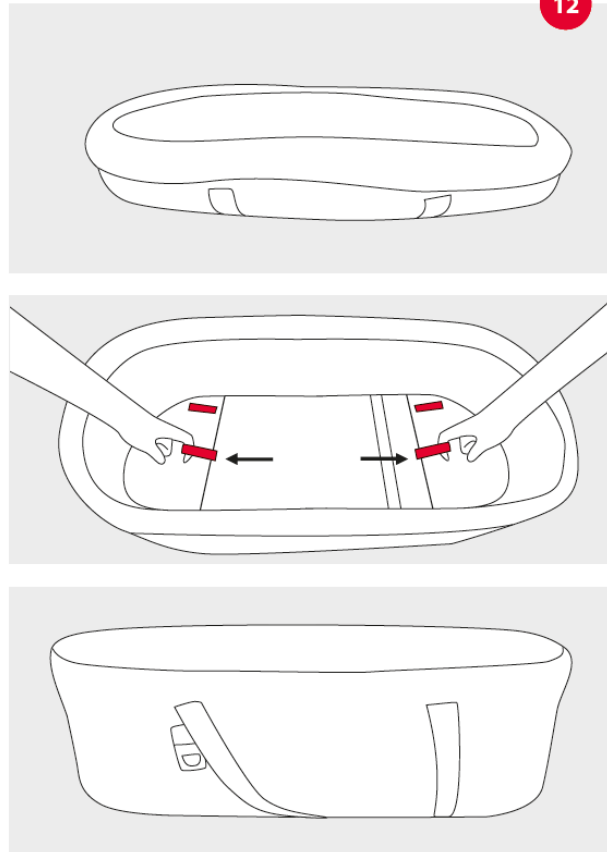




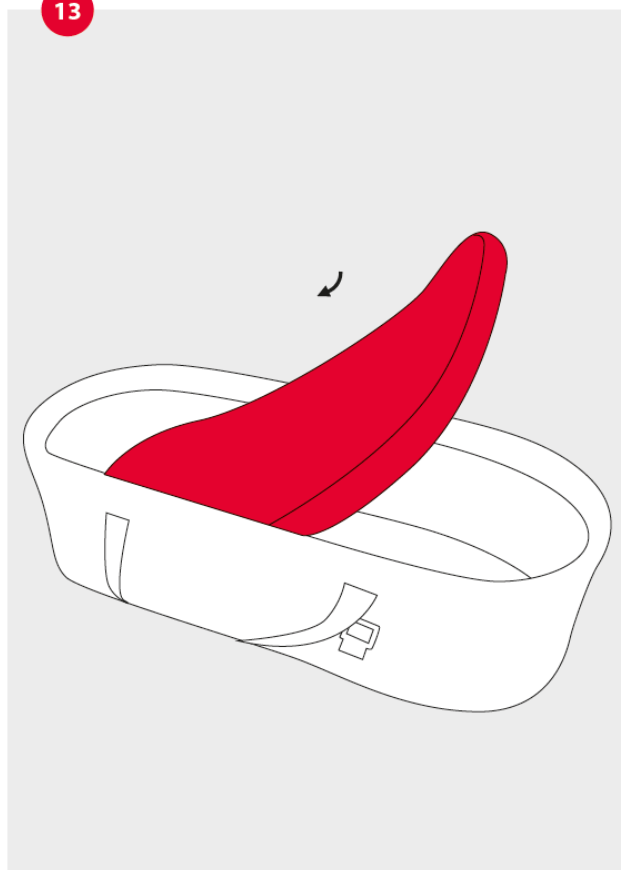
11



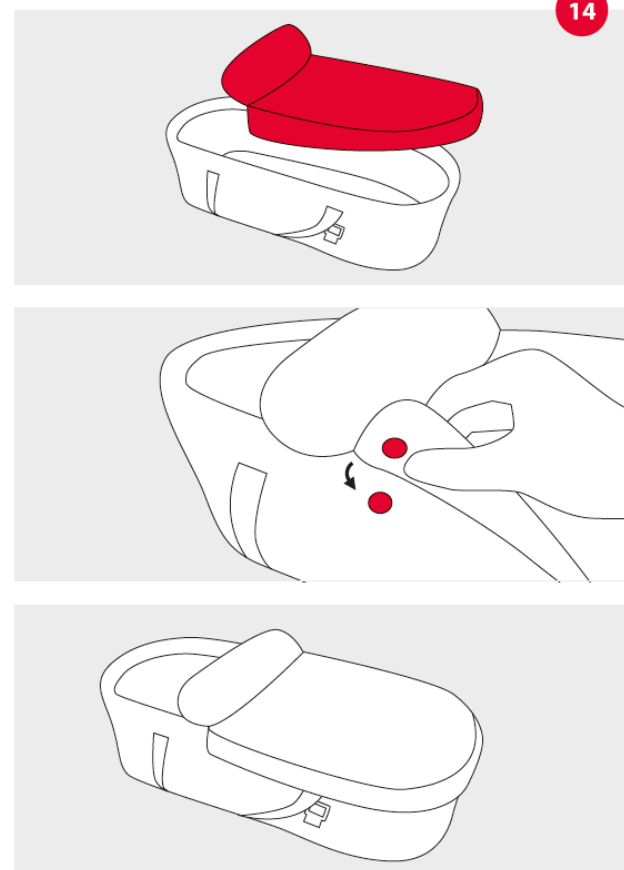
12

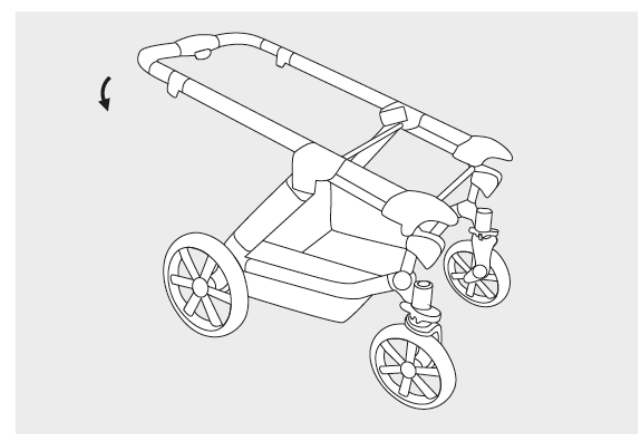
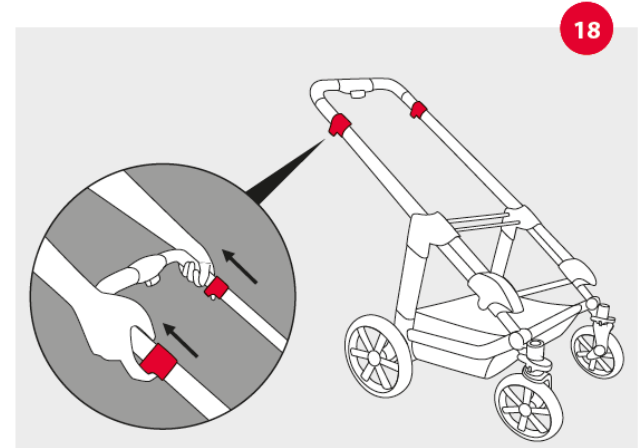
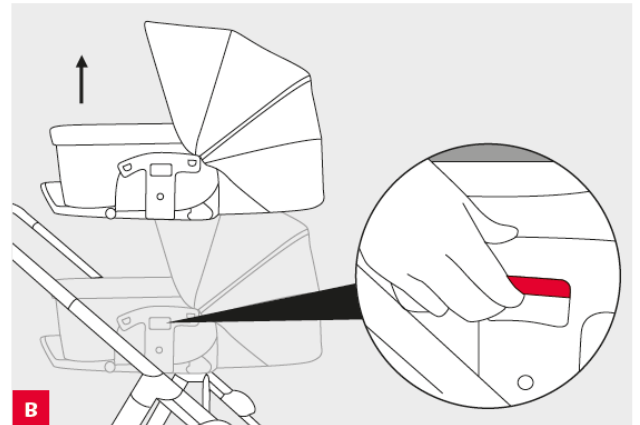
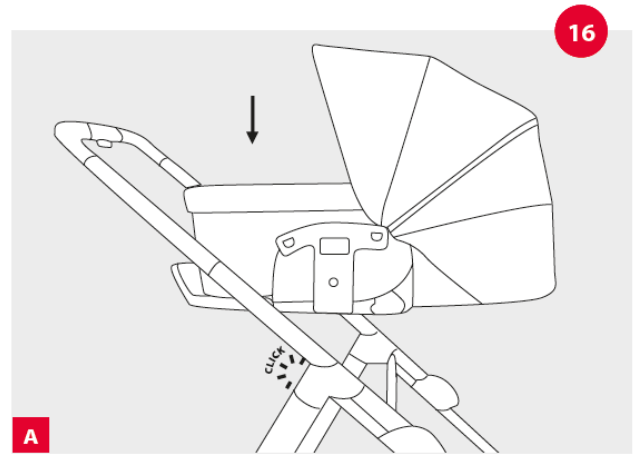
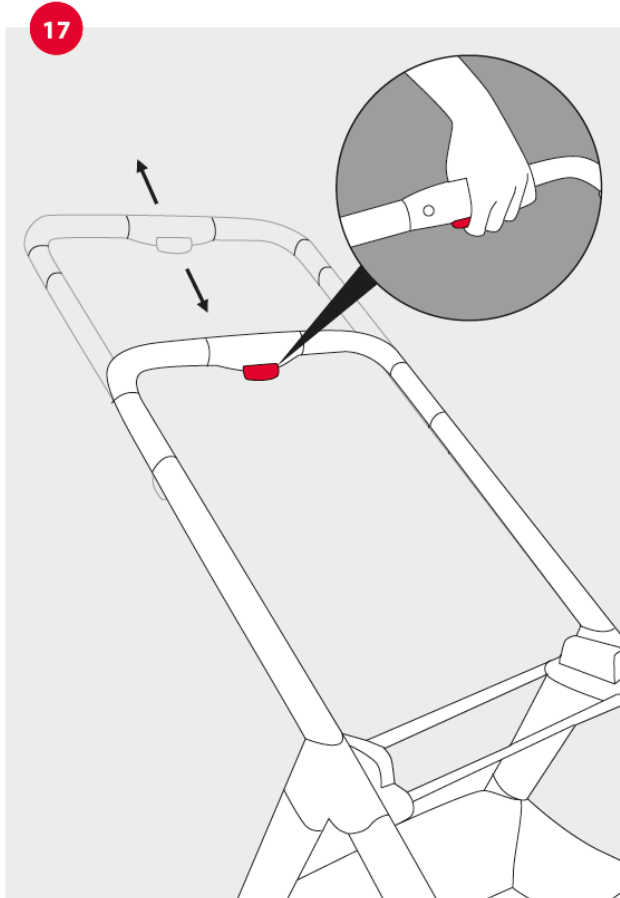
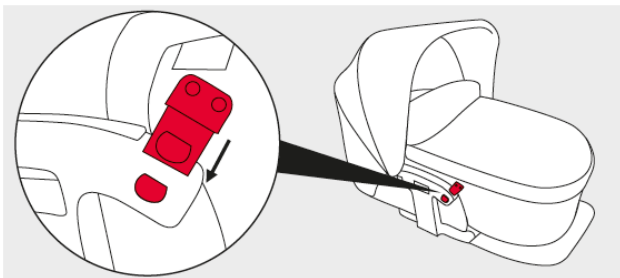
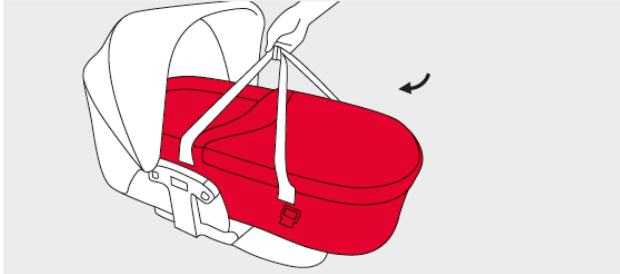
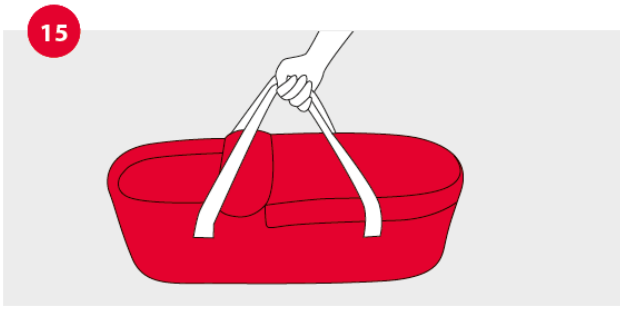


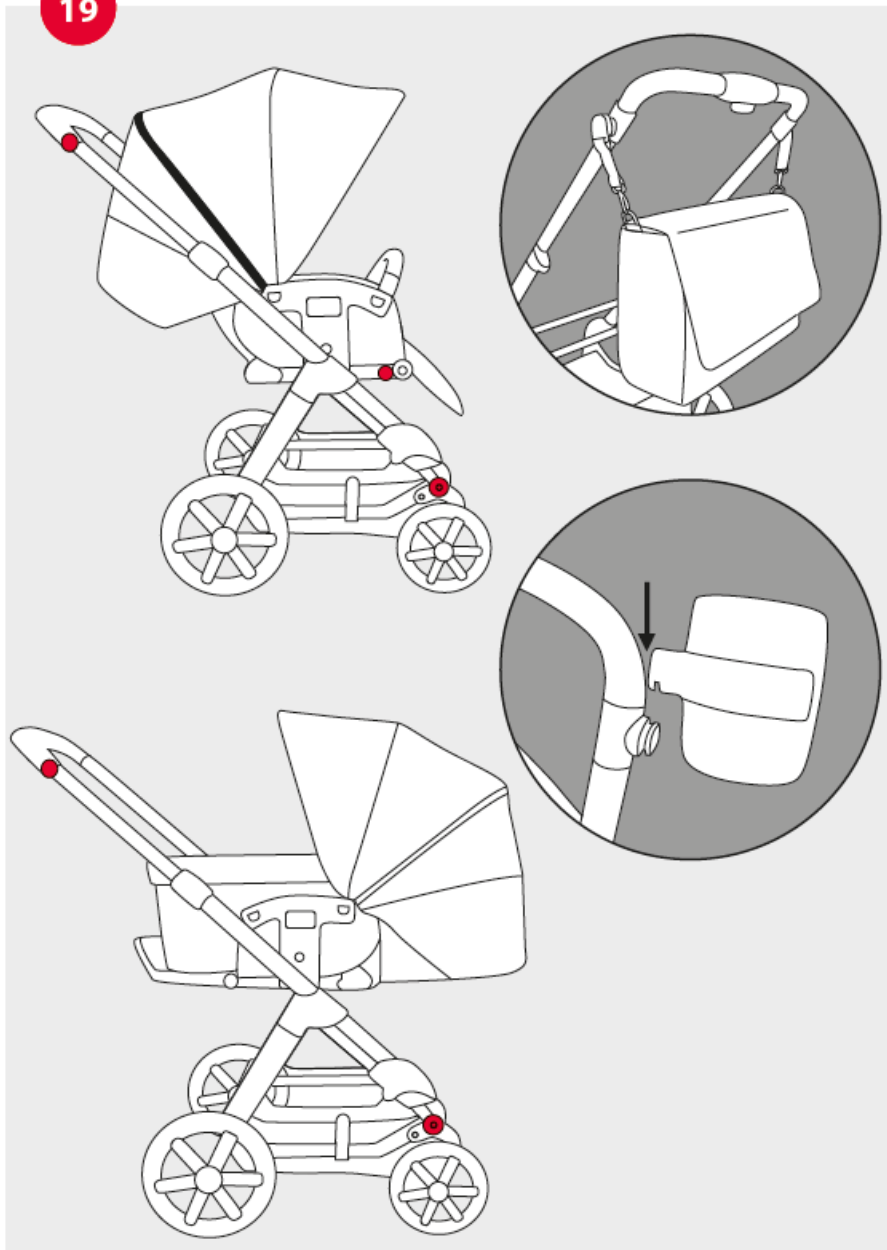
13



14







CAUTION

- Never leave your baby unattended.
- Ensure that all the catches are engaged before use.
- Make sure that your child is at a safe distance while opening and collapsing the pushchair to avoid injuries.
- Do not let your child play with the pushchair.
- Use a safety harness as soon as your baby can sit independently.
- This seat is not suitable for babies under 6 months old.
- Always use the safety restraint.
- Before use, check that the pushchair attachment, seat unit, or car seat is correctly engaged in position.
- This product is not suitable for jogging or skating.

WARNINGS relating to the carrycot:

- This product is only suitable for a baby still unable to sit up independently.
- For use on firm, horizontal, and dry surfaces only.

- Do not let other children play unsupervised in the vicinity of the portable cot/carrycot.
- Do not use the carrycot if parts are broken, ripped, or missing.
- Do not leave the handles inside the carrycot. Important information
- This product is suitable for infants from 6 months (from birth with portable cot/carrycot) and up to a maximum weight of 15 kg.
- This product is designed to transport a child.
- The brake must be engaged when lifting the child in and out.
- The net bag can carry up to 5 kg.
- Any loads resting on the pushbar, rear, backrest, or sides of the pushchair will affect the stability of the pushchair.
- Always use the crotch strap and the lap restraint together.
- Do not use any accessories other than those approved by the manufacturer.
- If you use the frame in conjunction with a car seat, this is not a substitute for a cradle or a cot.
- When your baby needs to sleep, it should be placed in a suitable pushchair attachment, cradle, or cot.
- Do not use any spare parts other than those approved by the manufacturer.
- Do not make any modifications to the product that compromise its safety.
- Keep this product away from fire and other sources of heat.
- You are advised to take your child out of the pushchair as a matter of principle when negotiating steps or flights of stairs or if the pushchair needs to be lifted or carried.
- Before use, check that the pushchair attachment or seat is correctly engaged in position.

Important information on the carrycot

- Do not use any accessories other than those approved by the manufacturer.
- Keep this product away from fire and other sources of heat.
- Only use the mattress supplied with the product. Do not place an additional mattress in the carrycot.
- Check the carrying straps and the base regularly for damage.
- Carrycot: This product is suitable for infants who cannot sit up or turn over independently and who cannot get up on their hands and knees.
- Maximum weight of child: 9 kg
- If straps are attached to your carrycot, they must not be in the pushchair attachment while the pushchair is in use.
- Make sure that your baby's head is always higher than the rest of his body.

Care instructions

- The materials used to manufacture our products comply with the AZO requirement, EN1103, EN71-3, and lightfastness and color fastness standards for textiles. Nevertheless, we advise you not to leave the product exposed to bright sunlight for any length of time. No claims may be made for wear and tear or if the colors bleed or fade when exposed to strong sunlight. The fabric cover on this product is washable. The covers can be washed by hand or on a cold cycle in the washing machine (mild detergent).
- An ABC Design rain canopy is available in retail stores and is the only guarantee of complete protection against the rain.

- Regular care and upkeep play a major part to play in maintaining the safety and value of your product. Exposure to such things as salt in the air, road-gritting salt, or acid rain will encourage the onset of corrosion, as will inappropriate storage of the product.
- The moving and mechanical parts, such as the wheel, brake, and pushbar adjustment mechanism, must be cleaned and/or oiled regularly.
- Use mild and gentle aids for cleaning, such as sponges, soft brushes, and lukewarm water.
- Only use silicone-free oil as a lubricant.
- We recommend regular maintenance of all coated parts. In serious cases of soiling, please clean the surface coating immediately.
- Check for loose parts and fastenings from time to time and tighten if necessary.
- Removable covers can generally be washed.
- Note the washing instructions on the product.

Customer complaints

- If you wish to make a complaint, please contact the stockist where you bought the product.
- Claims may only be made on the warranty subject to proof of purchase.
- No claims may be made for natural wear and tear or for damage caused by undue demands on the product or by exceeding the permissible load.
- No claims may be made for damage caused by Improper use.
- No claims may be made for damage caused by Incorrect assembly or operation.
- No claims may be made for damage caused by Improper modifications to the product.
- Areas of rust may appear through lack of maintenance or improper care and do not constitute a fault with the product.
- Scratch marks are normal signs of wear and do not constitute a fault with the product.
- Mildew is likely to appear on textiles that are not dried out after getting wet and cannot be attributed to shortcomings in production conditions.
- The product may fade if exposed to sunlight, perspiration, and detergents or if subject to abrasion or excessive washing therefore, Fading cannot be attributed to a fault with the product.
- No claims may be made for wheels that become worn out as a natural result of wear and tear.

ABC Design GmbH

Dr. Rudolf-Eberle Straße 29
79774 Albbruck

Germany

Telefon // Phone +49 (0) 7753 / 93 93-0

Telefax // Fax +49 (0) 7753 / 93 93-40

info@abc-design.com

www.abc-design.com



www.abc-design.de/videos

Download PDF: [ABC Design Tereno 4 Stroller User Manual](#)

References

- [User Manual](#)

[Manuals+](#), [Privacy Policy](#)

This website is an independent publication and is neither affiliated with nor endorsed by any of the trademark owners. The "Bluetooth®" word mark and logos are registered trademarks owned by Bluetooth SIG, Inc. The "Wi-Fi®" word mark and logos are registered trademarks owned by the Wi-Fi Alliance. Any use of these marks on this website does not imply any affiliation with or endorsement.