



ABC DESIGN

**ABC.2025.1
Salsa 5 Run**



ABC DESIGN ABC.2025.1 Salsa 5 Run Instruction Manual

[Home](#) » [ABC DESIGN](#) » ABC DESIGN ABC.2025.1 Salsa 5 Run Instruction Manual 

Contents

- 1 [ABC DESIGN ABC.2025.1 Salsa 5 Run](#)
- 2 [Product Usage Instructions](#)
- 3 [FAQ](#)
- 4 [WARNING](#)
- 5 [Important information](#)
- 6 [Care instructions](#)
- 7 [Customer complaints](#)
- 8 [Installation Instruction](#)
- 9 [Contact](#)
- 10 [Documents / Resources](#)
 - 10.1 [References](#)
- 11 [Related Posts](#)



ABC DESIGN

ABC DESIGN ABC.2025.1 Salsa 5 Run



Specifications

- Model: Salsa 5 Run ABC.2025.1
- Compliance: EN 1888-2:2018+A1:2022
- Maximum Weight Capacity: 22 kg
- Tire Pressure: MAX 1.8 BAR (26 PSI)

Product Usage Instructions

Important Safety Information

Before using the product, ensure all safety devices are correctly engaged. Do not use the stroller for sport activities unless properly equipped and used according to safety guidelines.

Care Instructions

Follow the care instructions provided by the manufacturer. Avoid exposing the product to direct sunlight for extended periods to prevent color fading.

Warnings

- Do not exceed the maximum weight capacity of 22 kg.
- Ensure all safety devices are correctly engaged before using the product.
- Avoid exposure to high salt levels in the air, road salt, or strong heat sources to prevent corrosion.

FAQ

- **Q: What is the maximum weight capacity of the Salsa 5 Run stroller?**
 - A: The maximum weight capacity is 22 kg.
- **Q: Can I use the stroller for sport activities?**
 - A: Only use the stroller for sport activities if properly equipped and following safety guidelines.

IMPORTANT – READ CAREFULLY AND KEEP FOR FUTURE REFERENCE

WARNING

- Never leave the child unattended
- Ensure that all the locking devices are engaged before use
- To avoid injury ensure that the child is kept away when unfolding and folding this product
- Do not let the child play with this product
- Use a harness as soon as the child can sit unaided
- This seat unit is not suitable for children under 6 months
- Always use the restraint system
- Check that the pram body or seat unit or car seat attachment devices are correctly engaged before use
- WARNING when using as a sport stroller
- Running and skating: A child is involved in your sporting activity: Be particularly careful at the kerbside, steps, on uneven ground and at obstacles.
- Do not use the pushchair for running/jogging or skating before the child is 9 months old.
- The seat unit must always be placed fully upright and facing forward when running/jogging or skating.
- The swivel function of the front wheel (or the front wheels) must always be locked when running/jogging or skating. 32 Salsa 5 Run ABC.2025.1

Important information

- This product is designed for children aged 6-48 months or above and weighing up to a maximum of 22 kg.
- This product is designed to transport a child.
- The brake must be engaged when lifting the child in and out.
- The net bag can carry up to 5 kg.
- Any loads resting on the push bar, rear, backrest, or sides of the pushchair will affect the stability of the pushchair.
- Always use the crotch strap and the lap restraint together.
- Do not use any accessories other than those approved by the manufacturer.
- If you use the frame in conjunction with a car seat, this is not a substitute for a cradle or a cot. When your baby needs to sleep, it should be placed in a suitable pushchair attachment, cradle or cot.
- Do not use any spare parts other than those approved by the manufacturer.

- Do not make any modifications to the product which compromise its safety.
- Keep this product away from fire and other \sources of heat.
- You are advised to take your child out of the pushchair as a matter of principle when negotiating steps or flights of stairs or if the pushchair needs to be lifted or carried.
- Before use, check that the pushchair attachment or seat is correctly engaged in position.

Important notes for use as a sports stroller

- Do not use the article for running/jogging or skating if it is fitted with a car seat or a carrycot.
- The child in the pushchair must wear warmer clothing than the user and must be protected against rain and UV radiation.
- Adults are recommended to wear a reflective vest or clothing when running/skating in or \close to traffic.
- Running and skating: It is advisable to protect your child with suitable protective equipment (e.g., a helmet).
- Check all parts of the pushchair for integrity and function before sporting use.
- The pram is not suitable for children under 9 months who are not yet able to sit up without support – risk to the child's health and physical development.
- Loose objects can fall out of the basket.

Care instructions

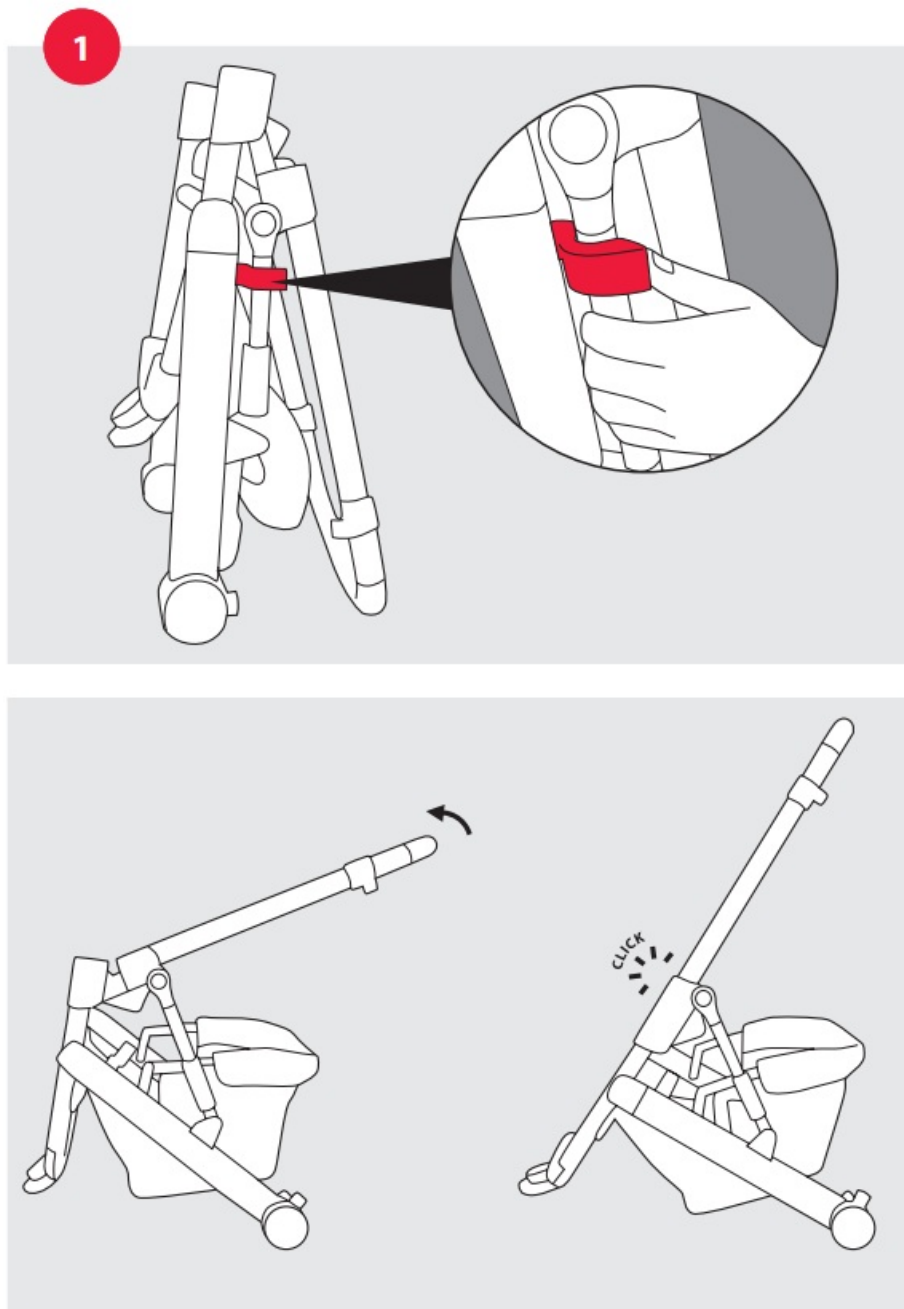
- The materials used to manufacture our products comply with the AZO requirement, EN1103, EN71-3, and lightfastness and colour fastness standards for textiles. Nevertheless, we advise you not to leave the product exposed to bright sunlight for any length of time. No claims\ may be made for wear and tear or if the colors bleed or fade when exposed to strong sunlight. The fabric cover on this product is washable. The covers can be washed by hand or on a cold cycle in the washing machine (mild detergent).
- Regular care and upkeep have a major part to play in maintaining the safety and value of your product. Exposure to such things as salt in the air, road-gritting salt or acid rain will encourage the onset of corrosion, as will inappropriate storage of the product.
- The moving and mechanical parts, such as the wheels, brake, and push bar adjustment mechanism, must be cleaned and/or oiled regularly. Use mild and gentle aids for cleaning, such as sponges, soft brushes and lukewarm water. Only use silicone-free oil as a lubricant.
- We recommend regular maintenance of all coated parts. In serious cases of soiling please clean the surface coating immediately.
- Check for loose parts and fastenings from time to time and tighten if necessary.
- Removable covers can generally be washed.
Note the washing instructions on the product.

Customer complaints

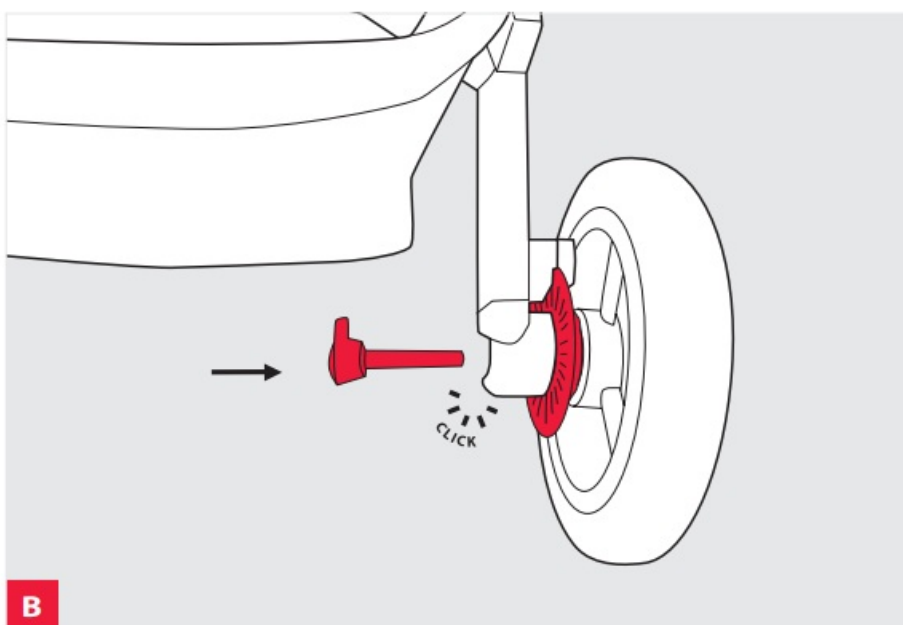
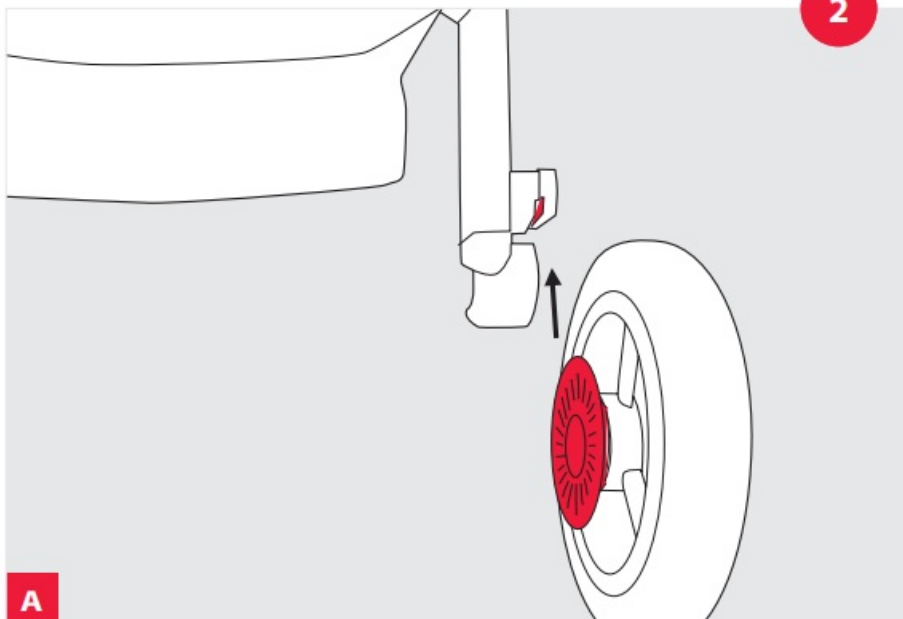
- If you wish to make a complaint, please contact the stockist where you bought the product.
- Claims may only be made on the warranty subject to proof of purchase.
- No claims may be made for natural wear and tear or for damage caused by undue demands on the product or by exceeding the permissible load.
- No claims may be made for damage caused by \improper use.

- No claims may be made for damage caused by incorrect assembly or operation.
- No claims may be made for damage caused by improper modifications to the product.
- Areas of rust may appear through lack of maintenance or improper care and do not constitute a fault with the product.
- Scratch marks are normal signs of wear and do not constitute a fault with the product.
- Mildew is likely to appear on textiles that are not dried out after getting wet and cannot be attributed to shortcomings in production conditions.
- The product may fade if exposed to sunlight, perspiration and detergents, or if subject to abrasion or excessive washing, therefore fading cannot be attributed to a fault with the product.
- No claims may be made for wheels that become worn out as a natural result of wear and tear.

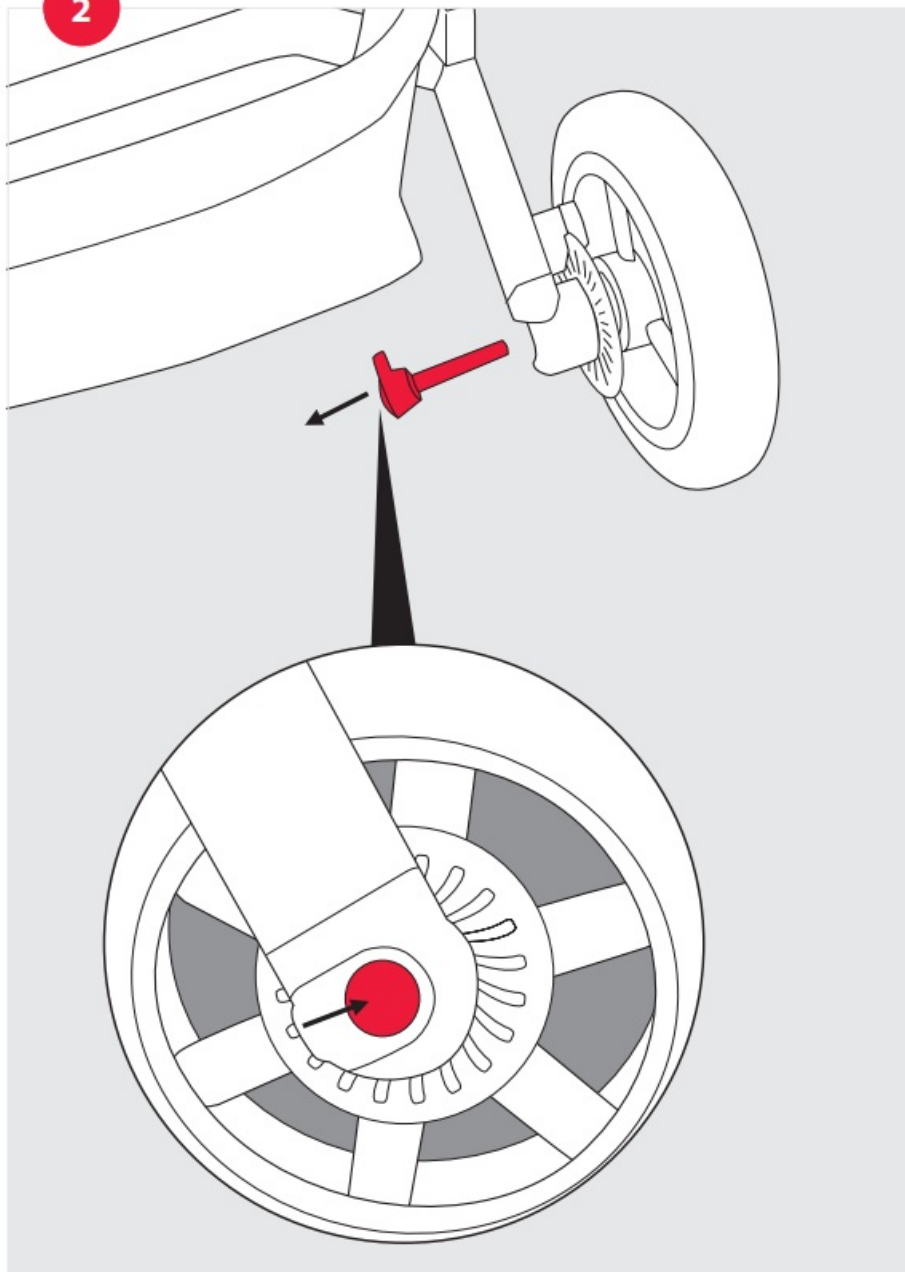
Installation Instruction

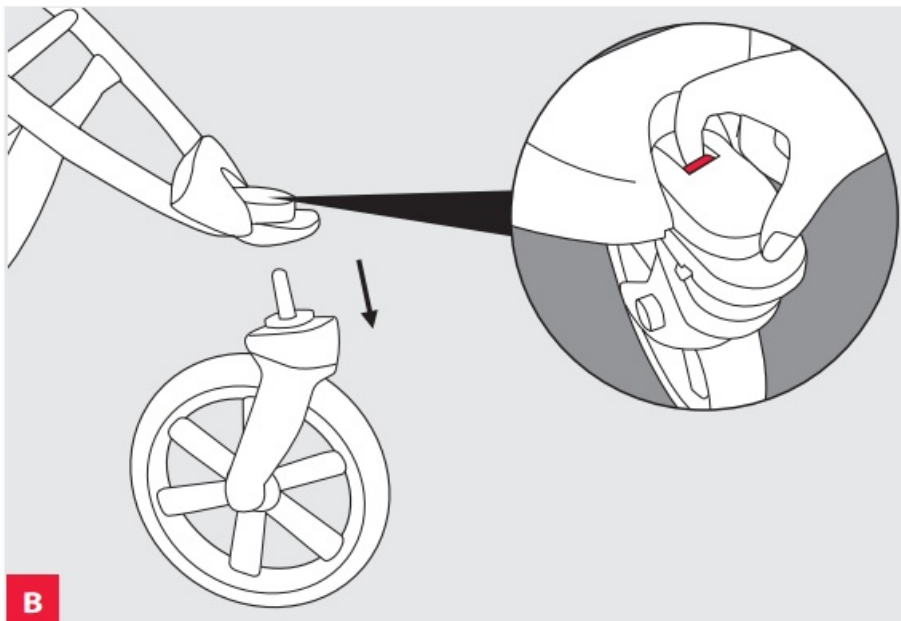
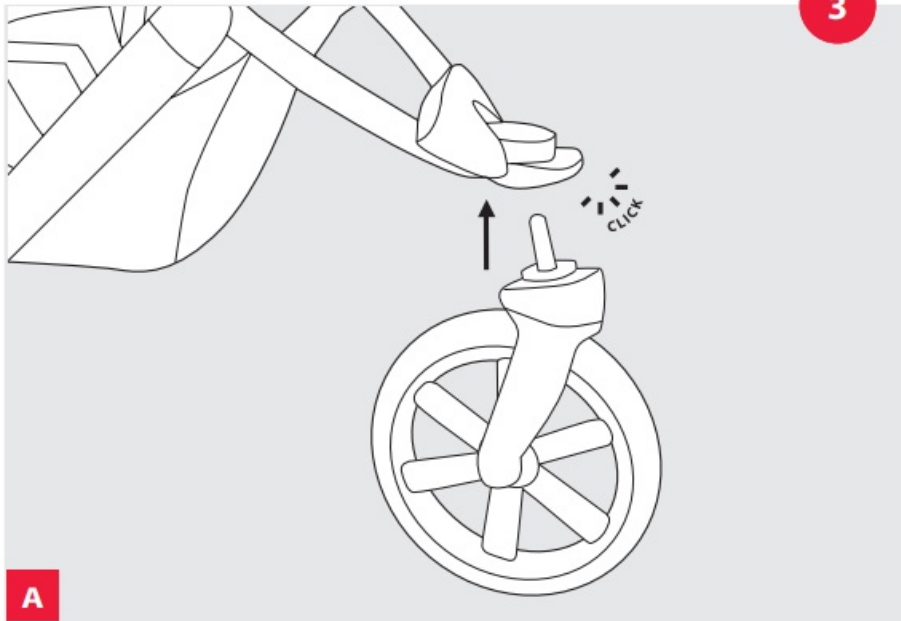


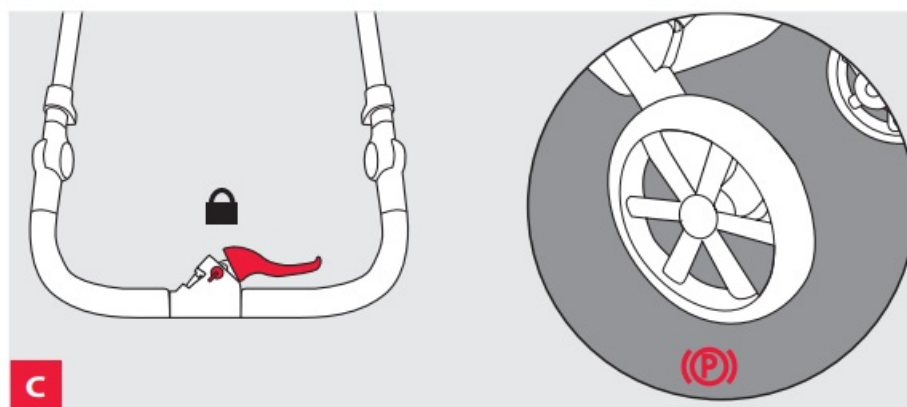
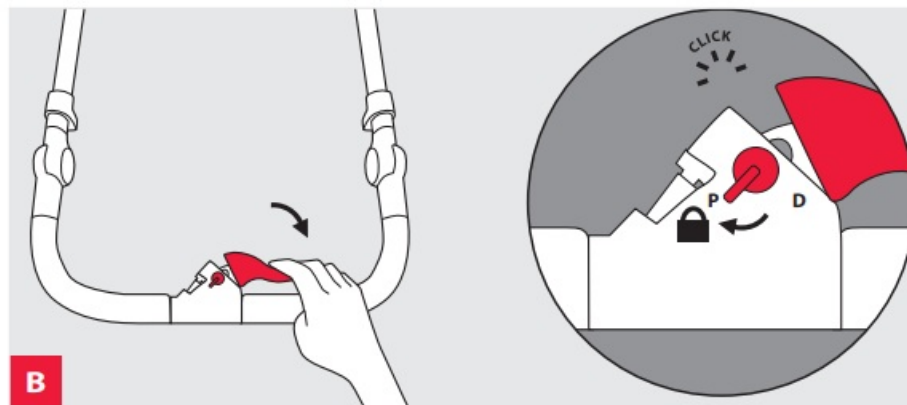
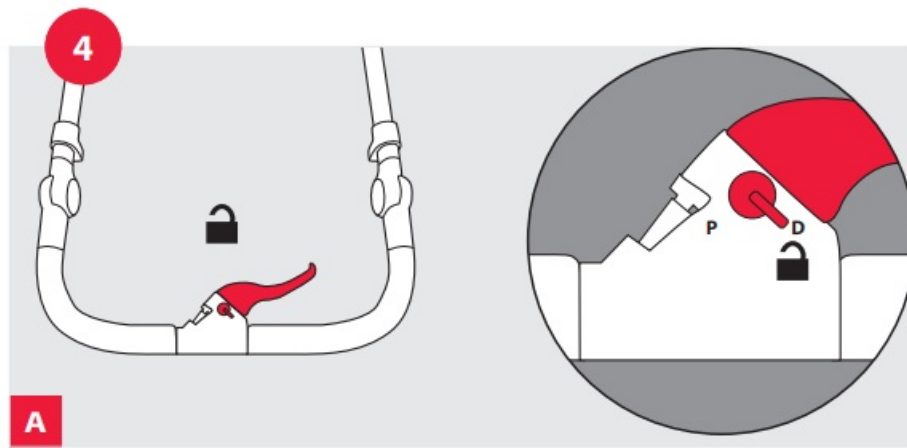
2

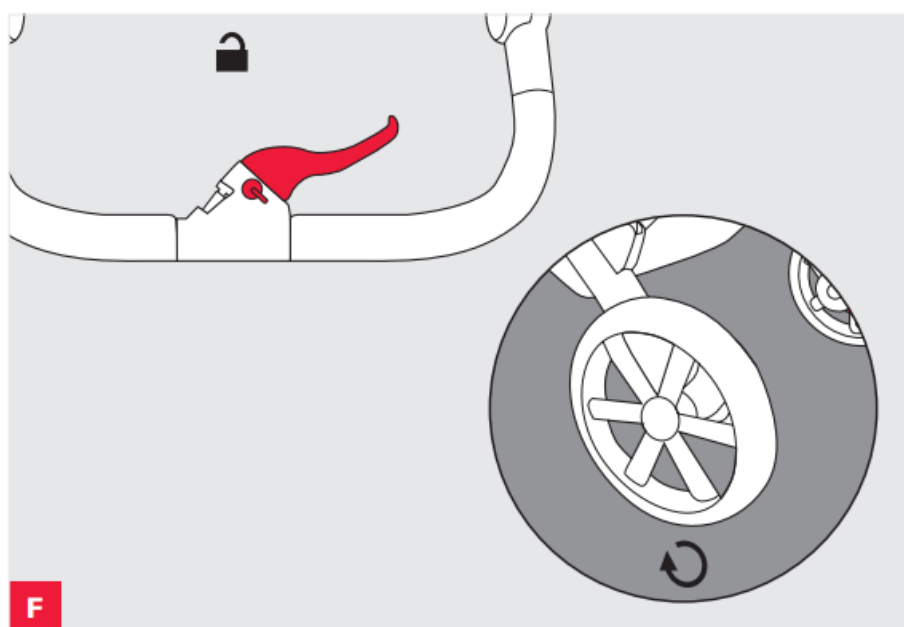
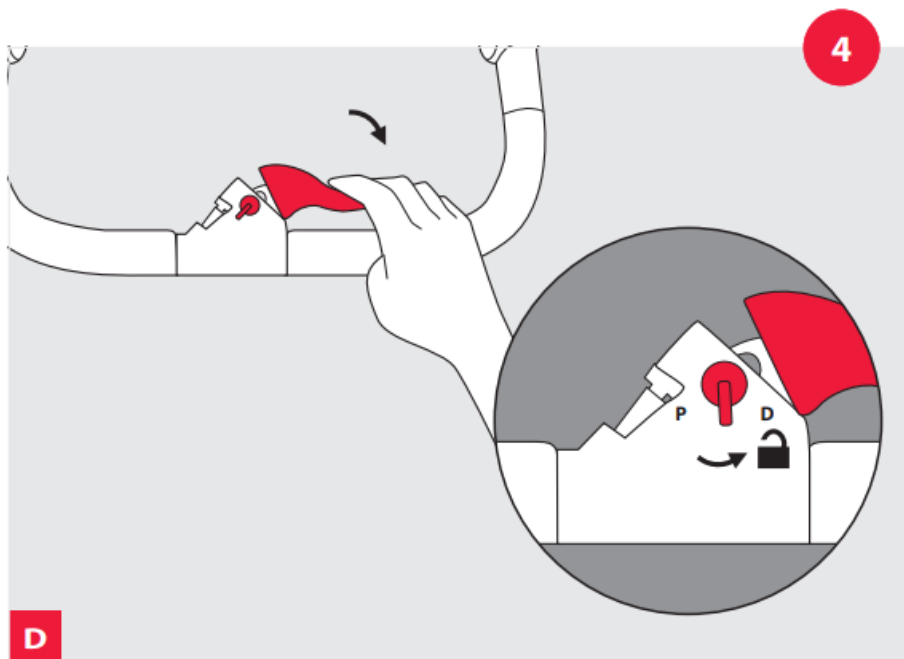


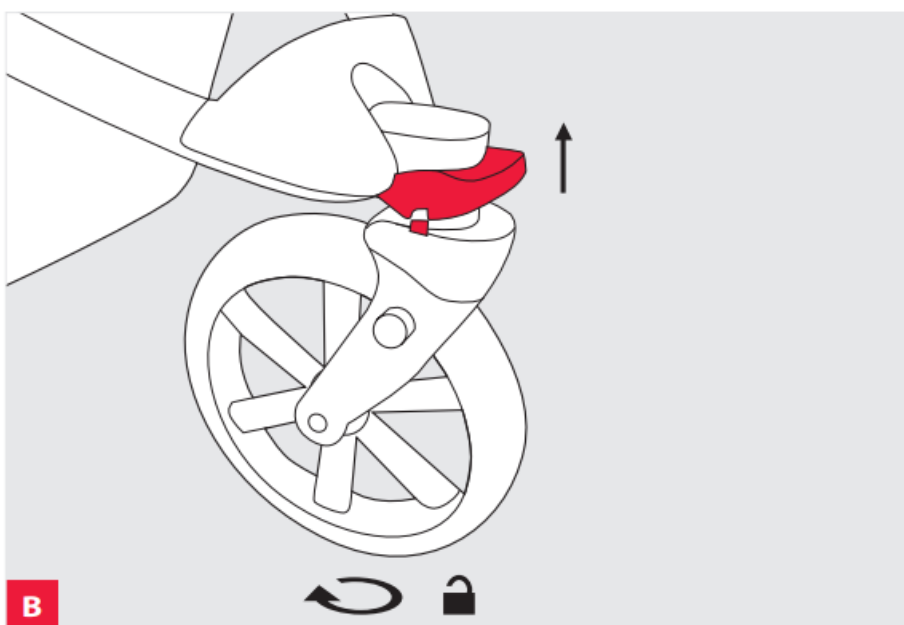
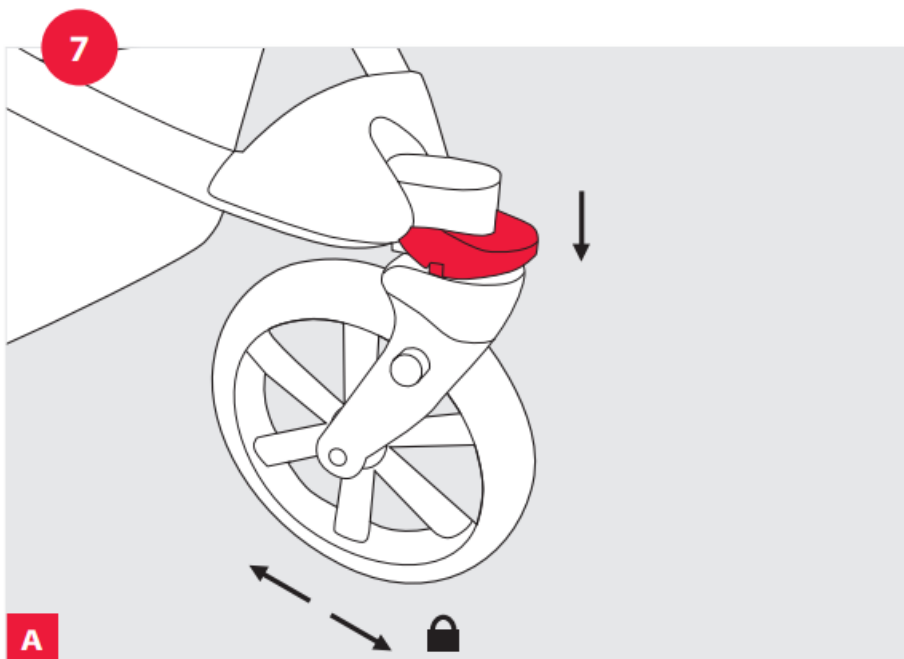
2

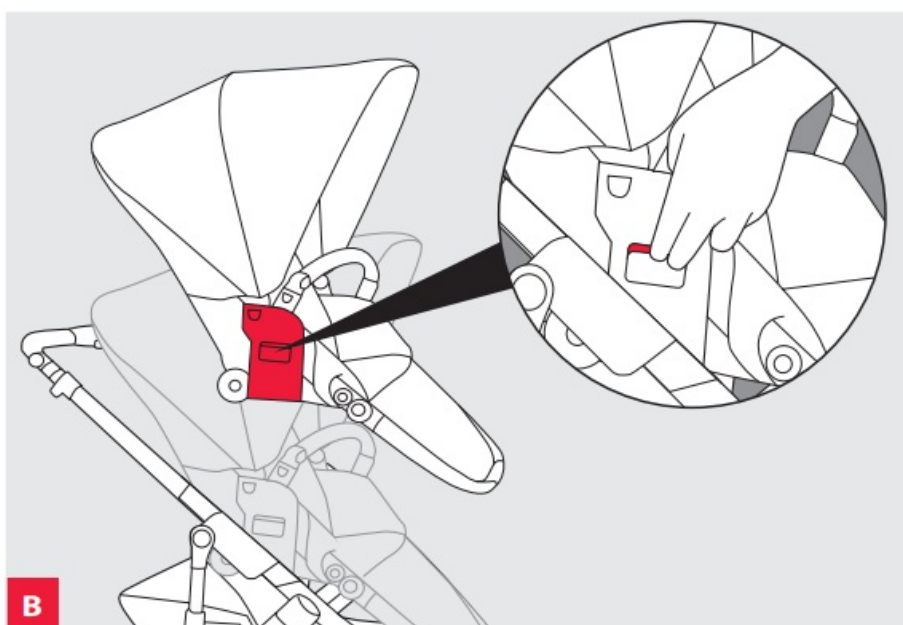
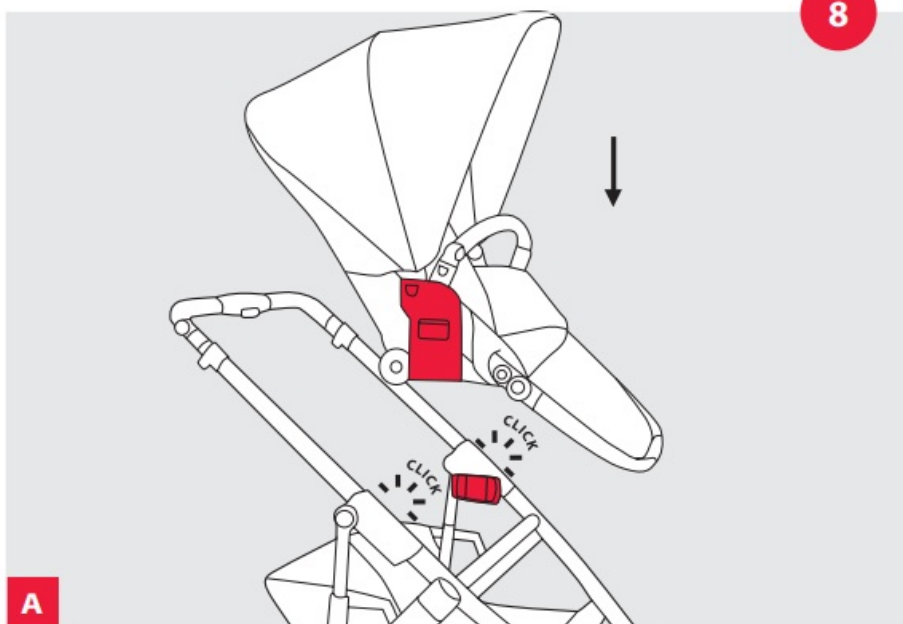


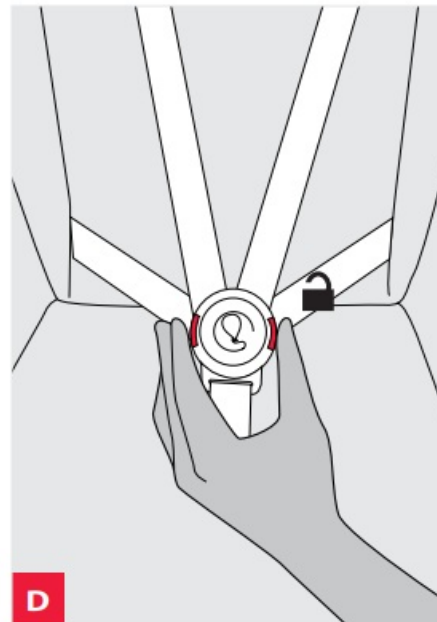
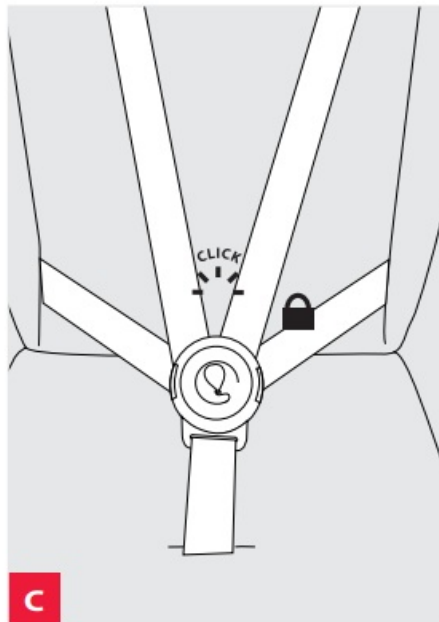
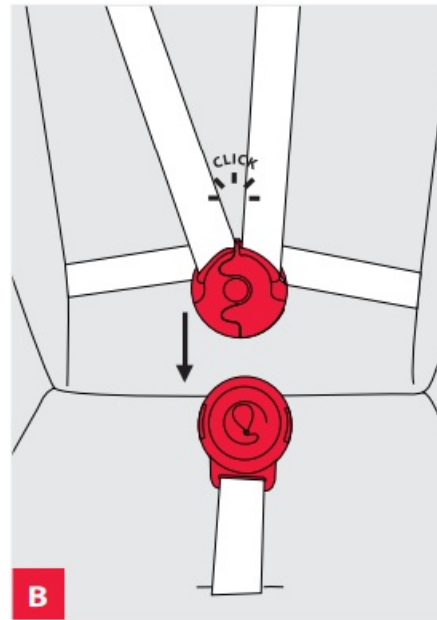
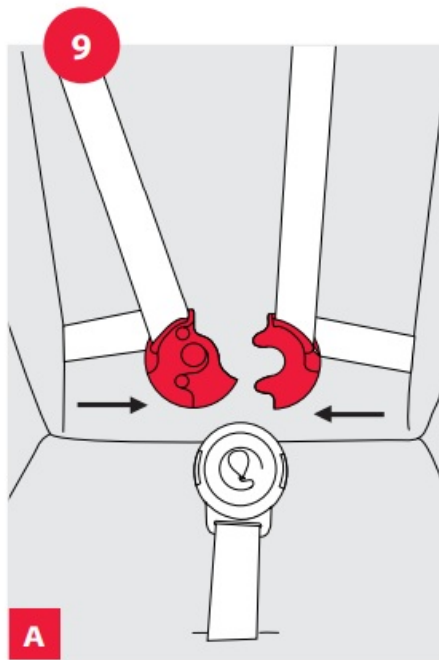


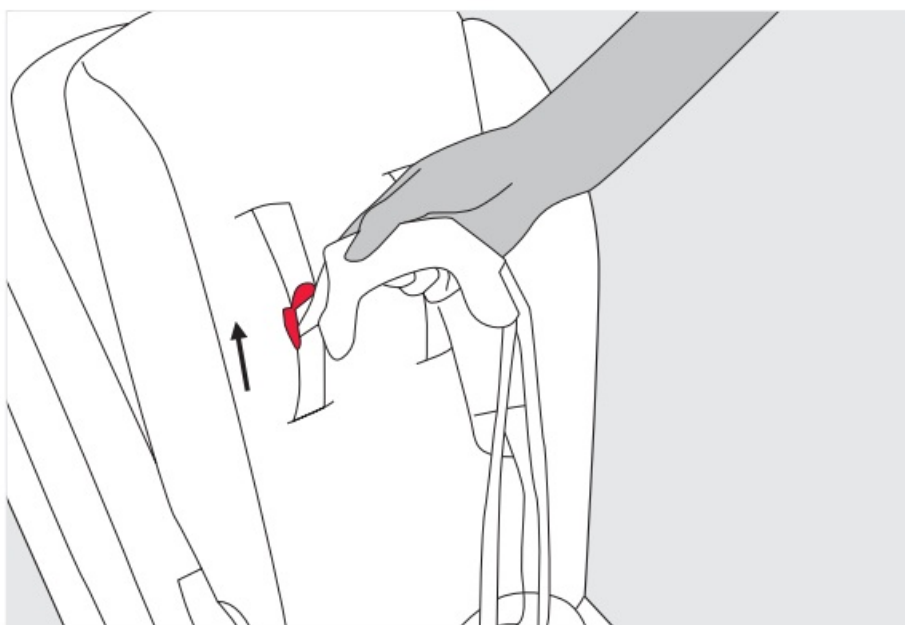
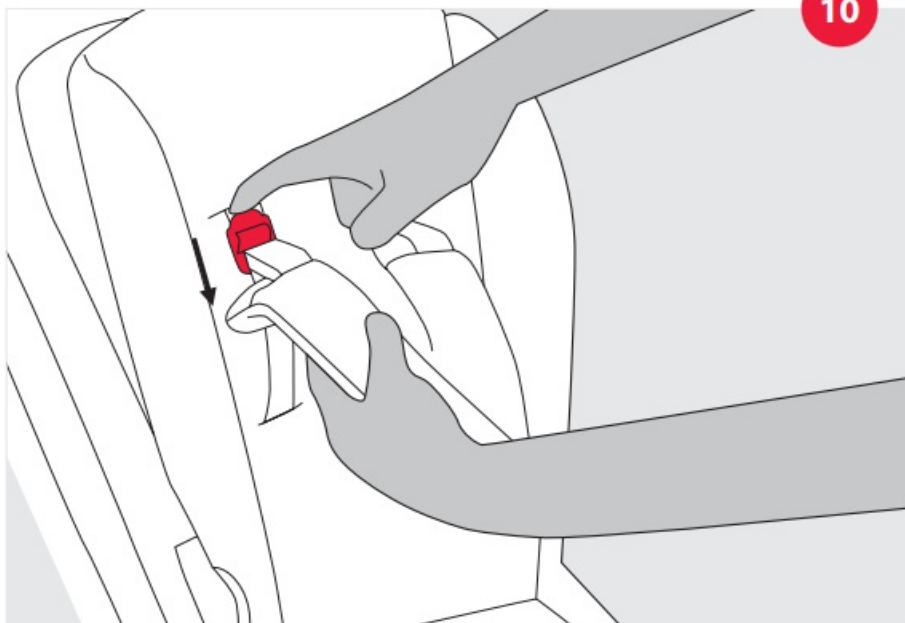




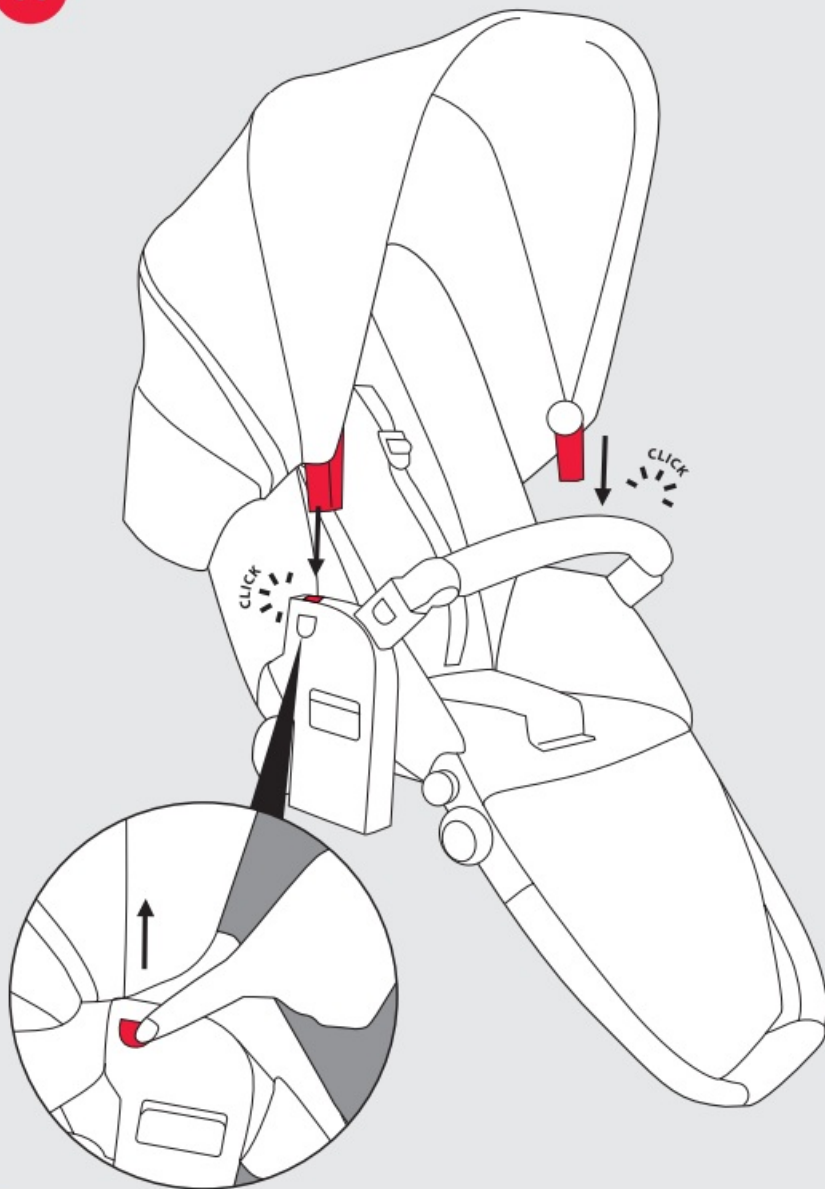




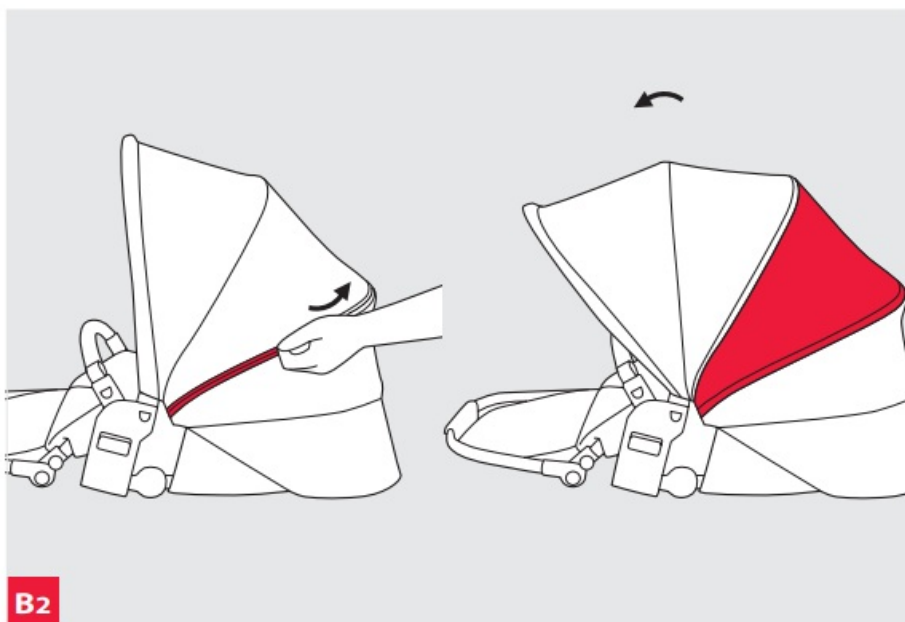
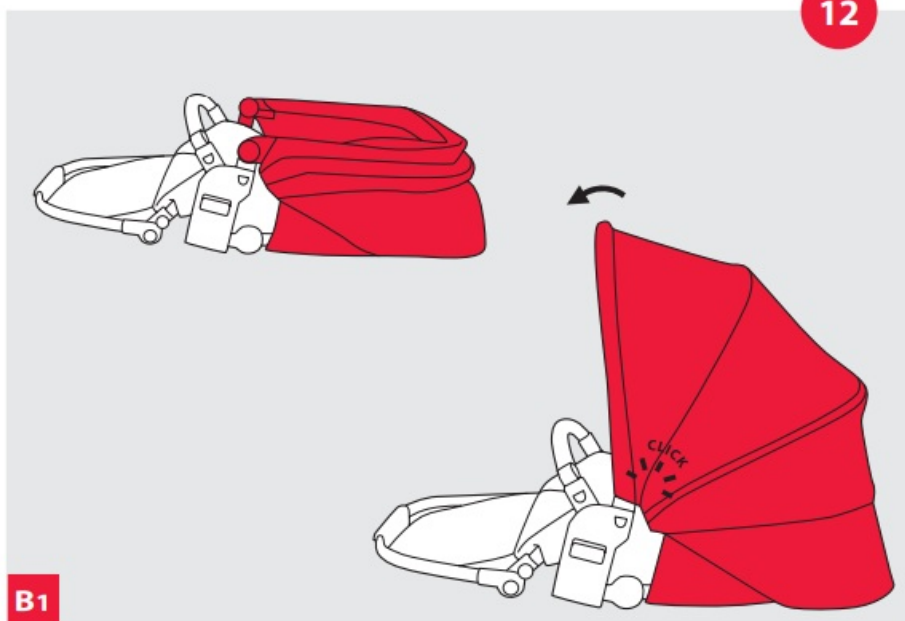


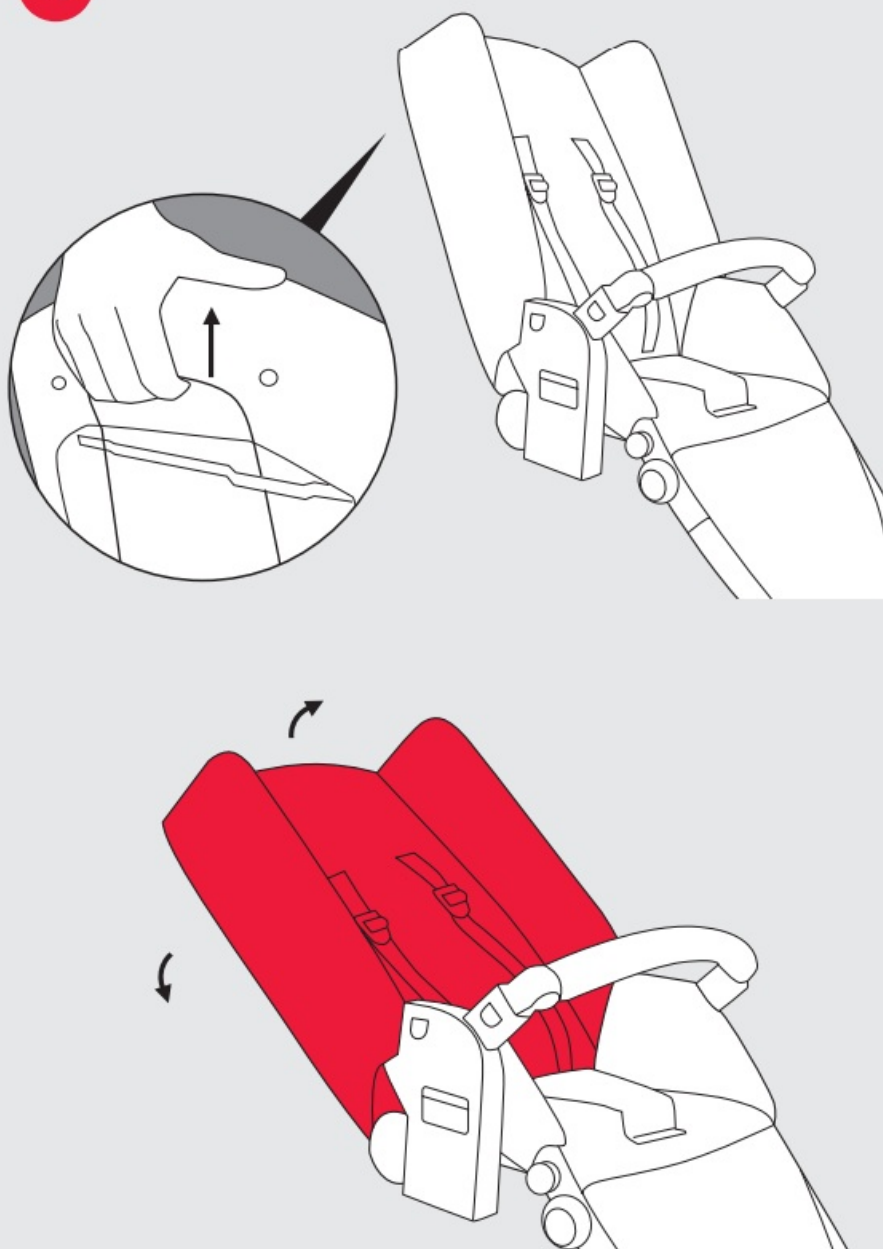


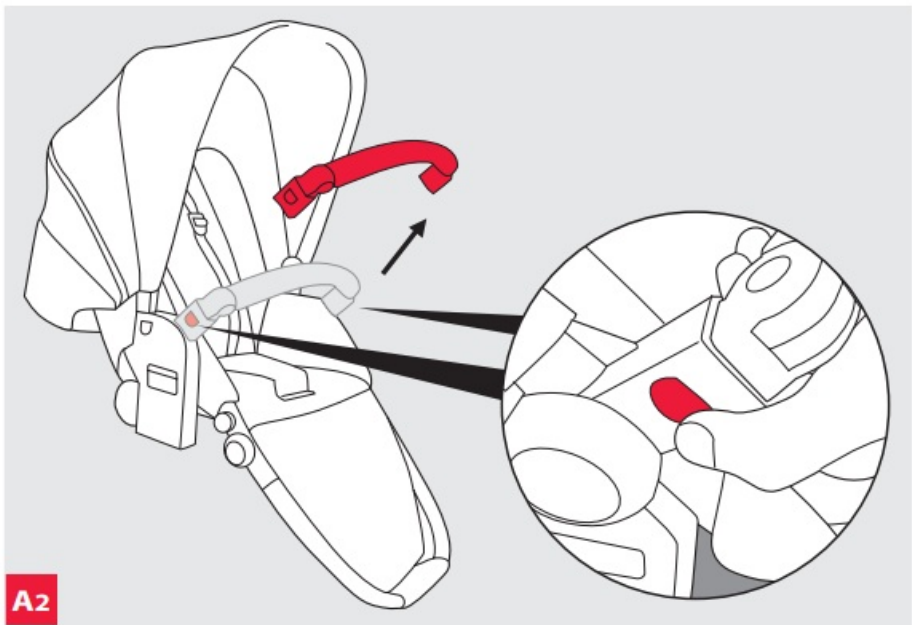
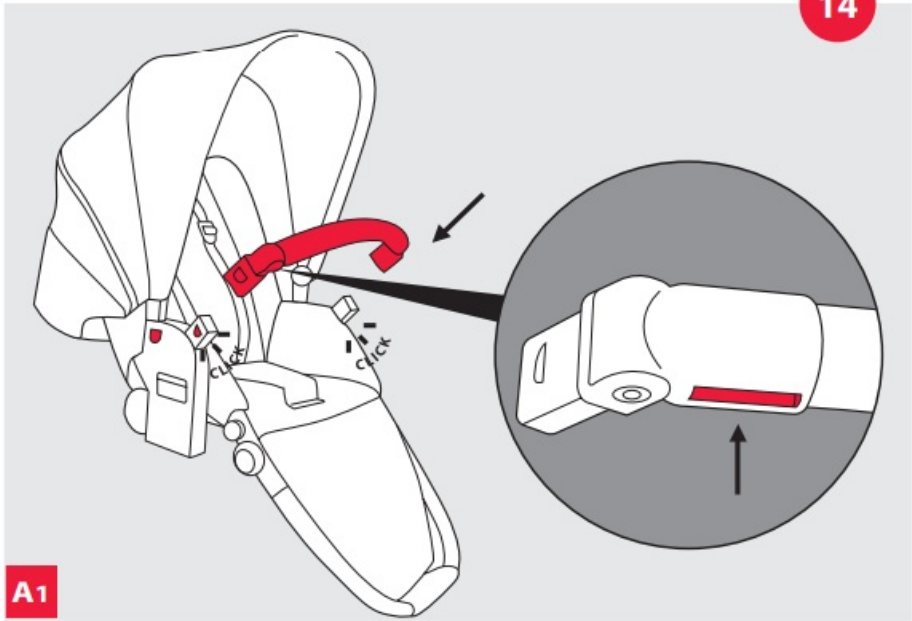
11



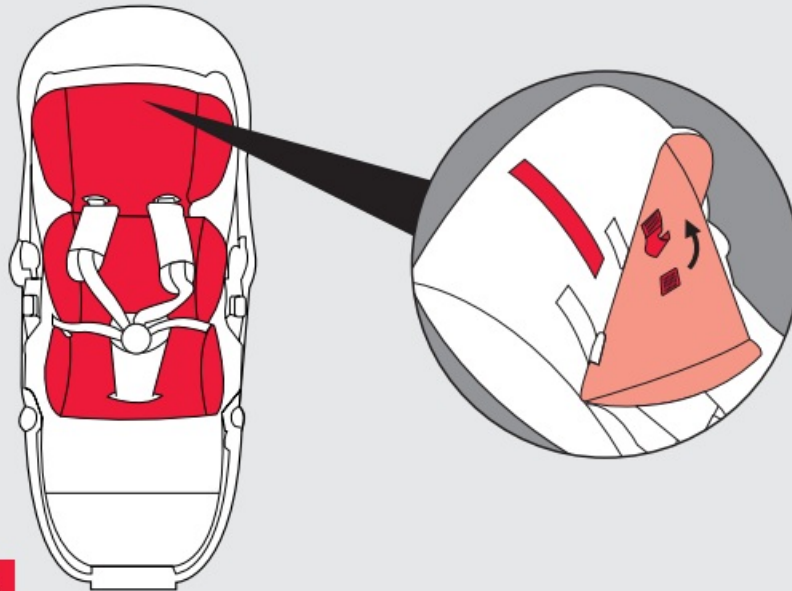
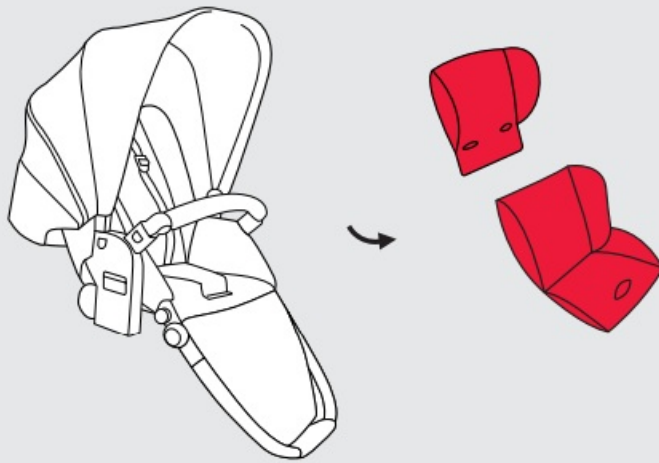
A1



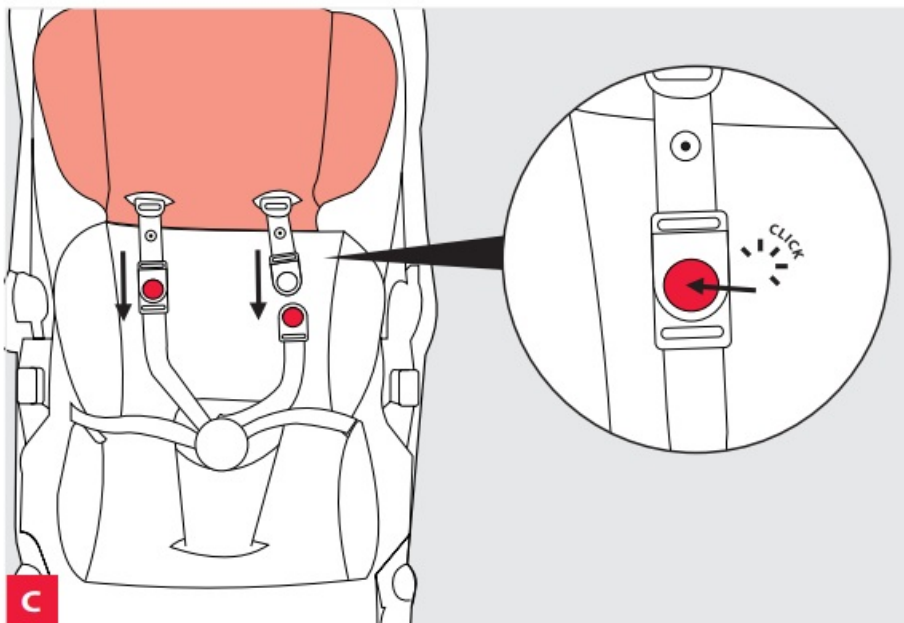
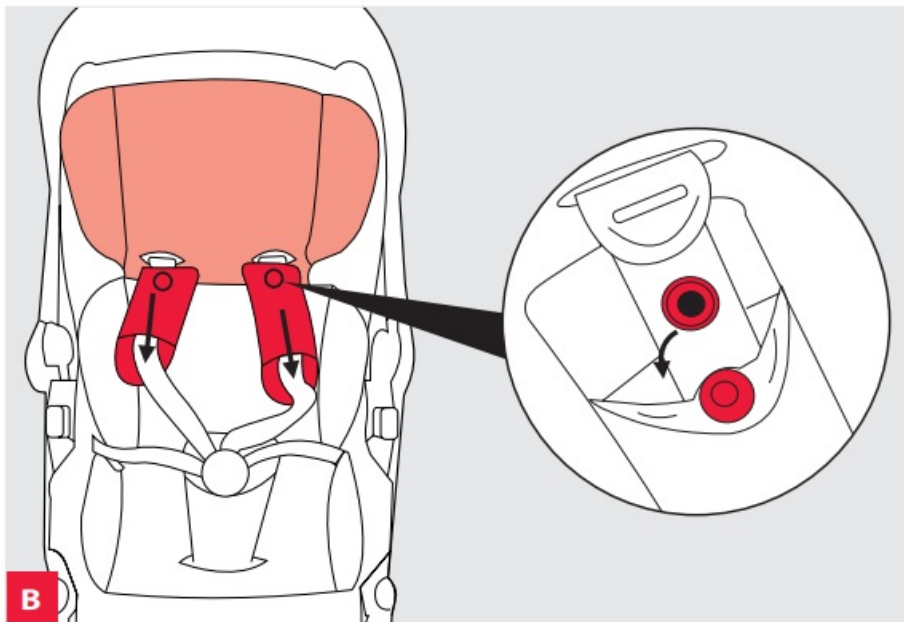


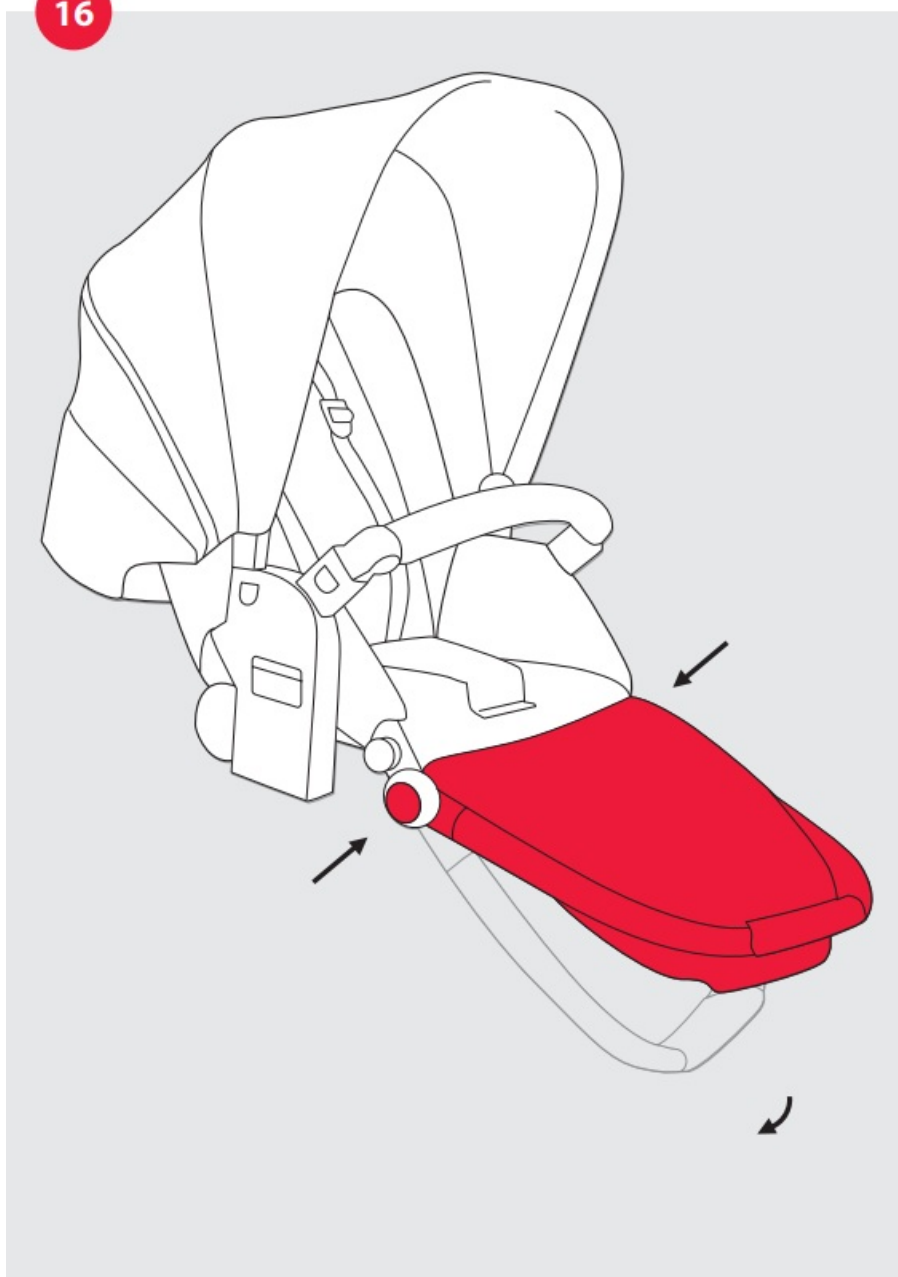


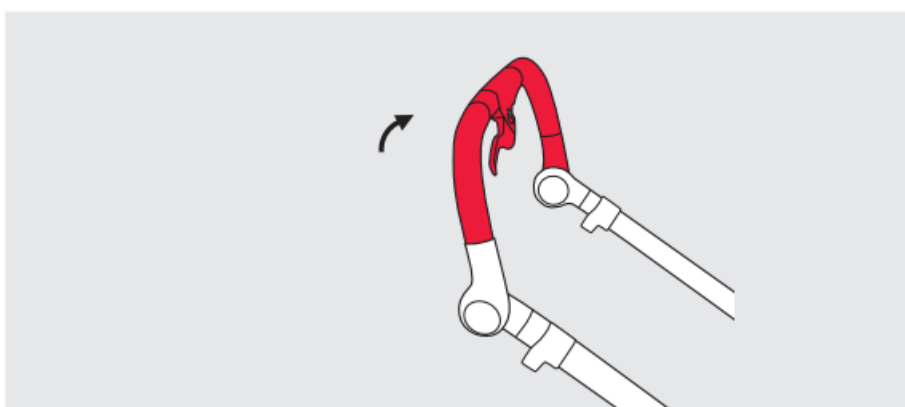
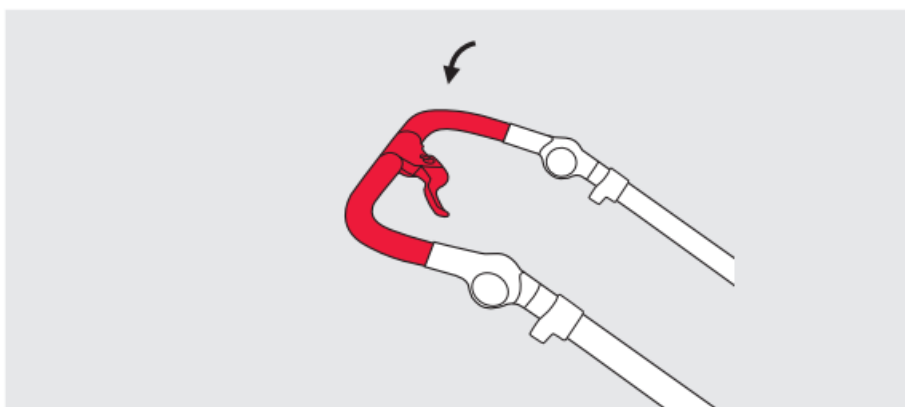
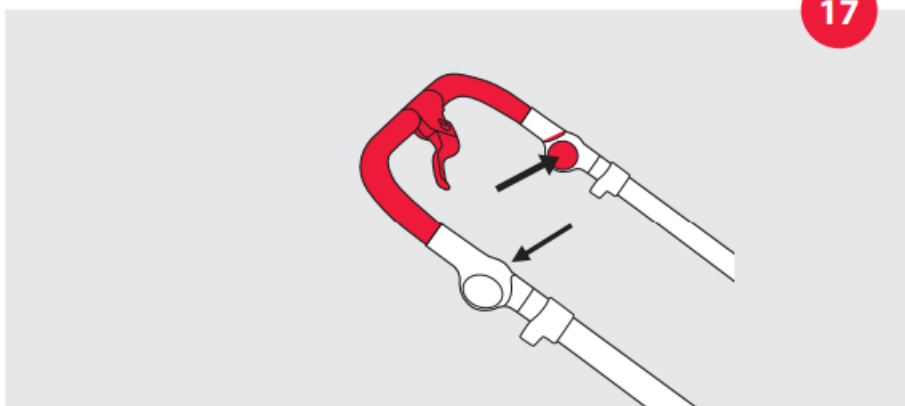
15



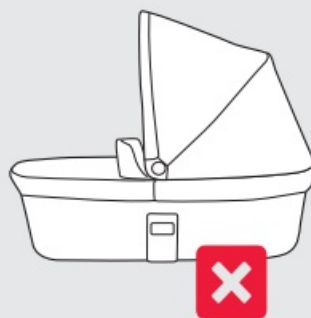
A





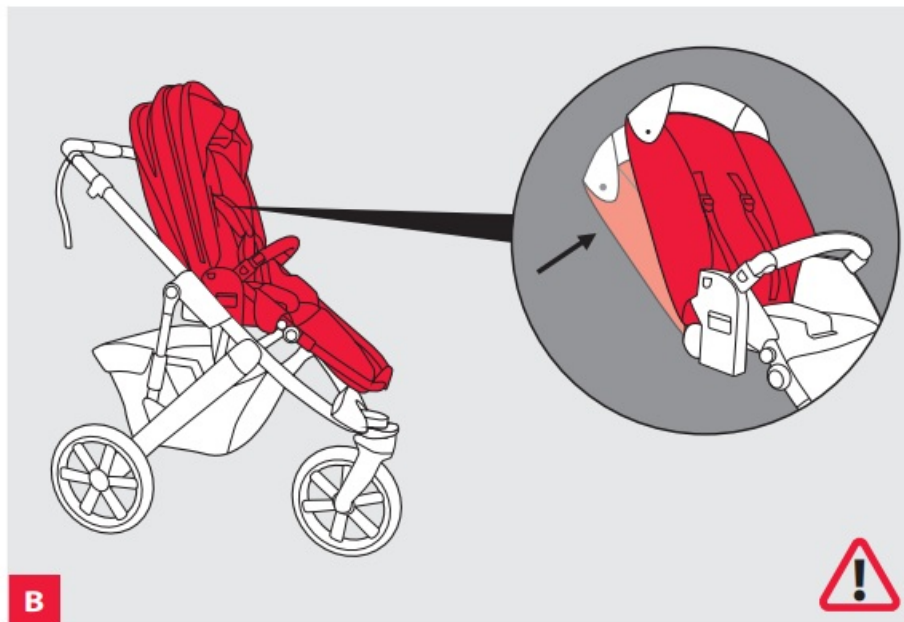
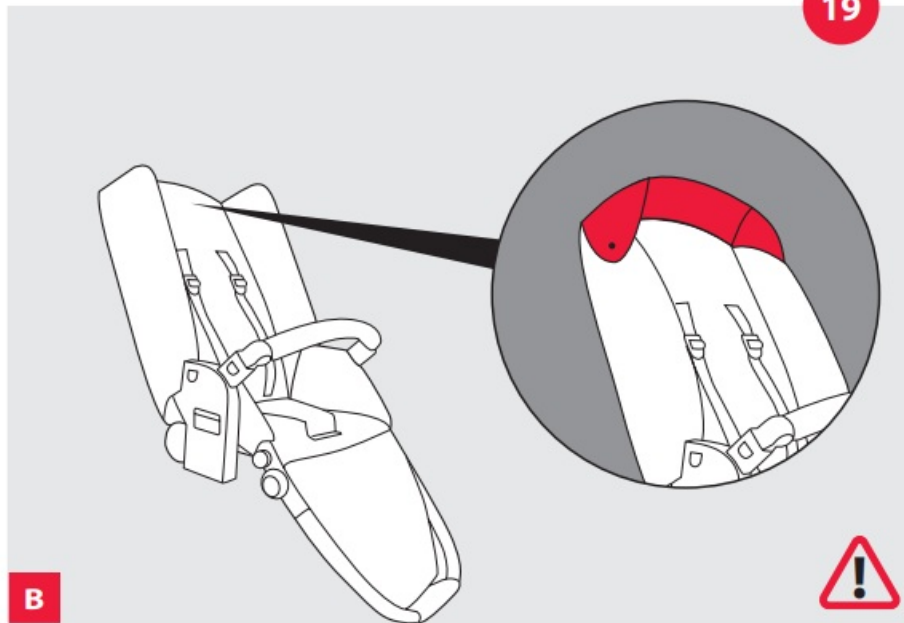


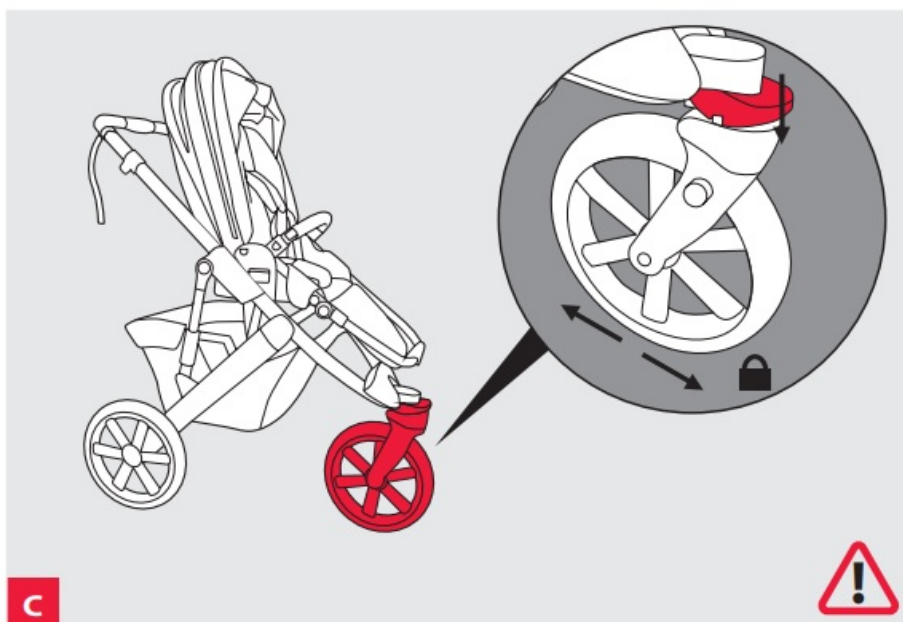
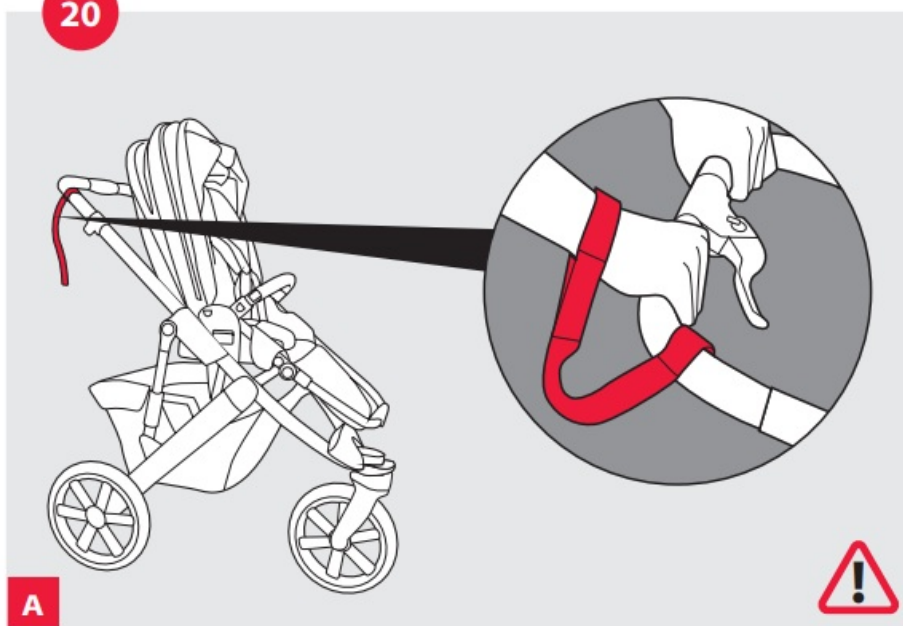
18

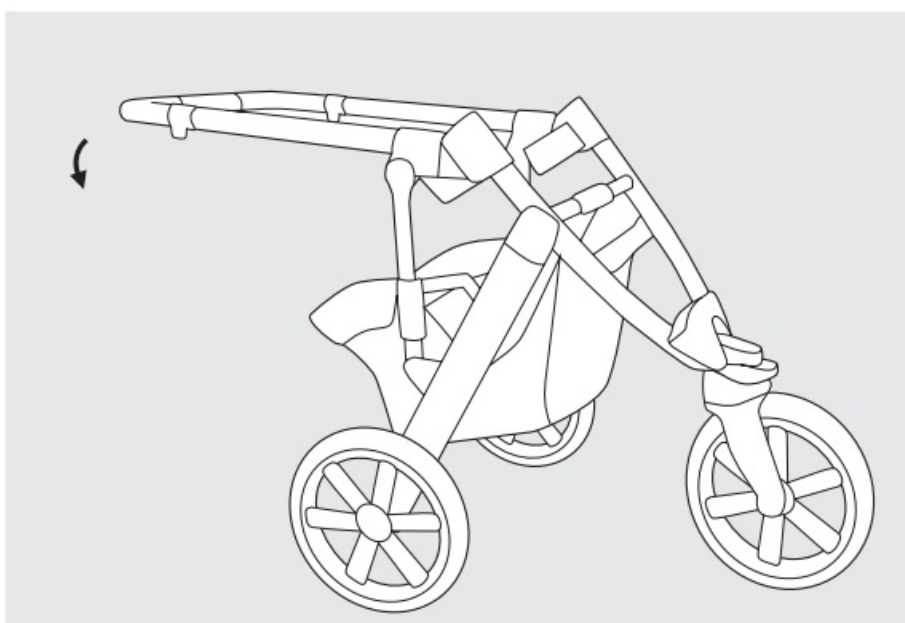
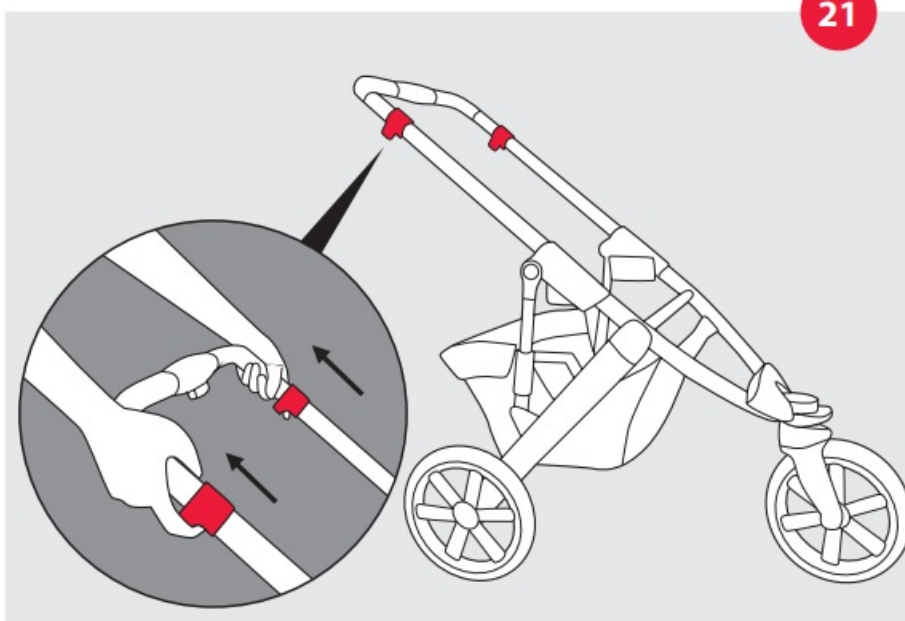


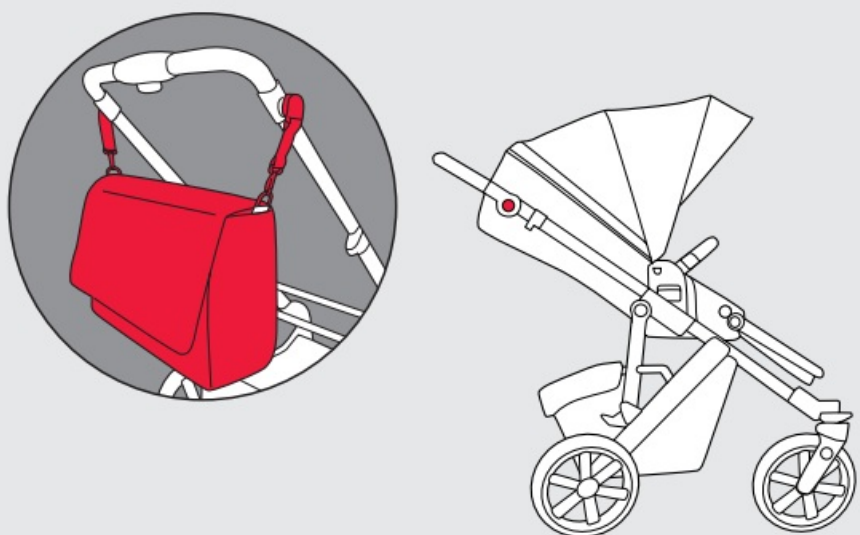
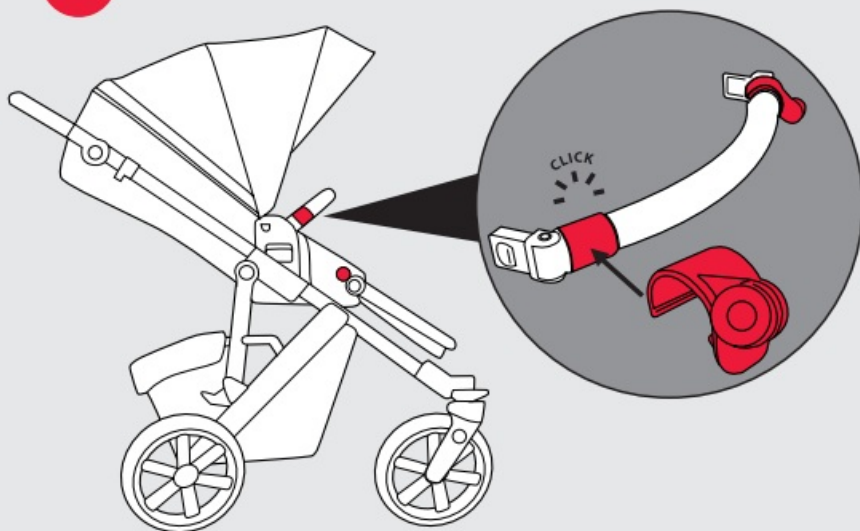
A

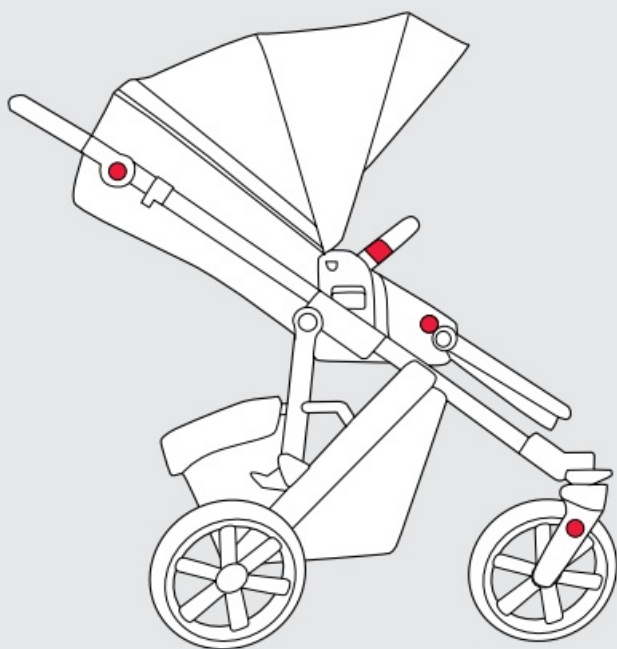
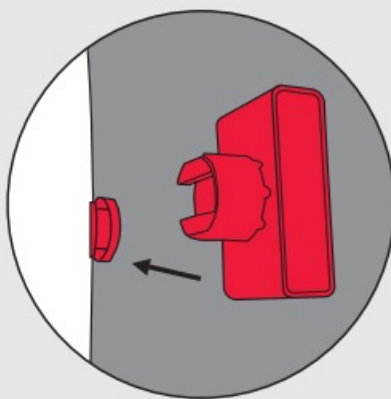
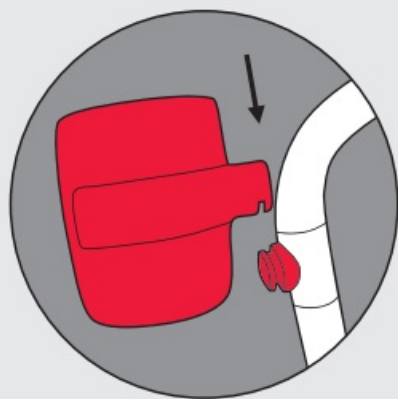




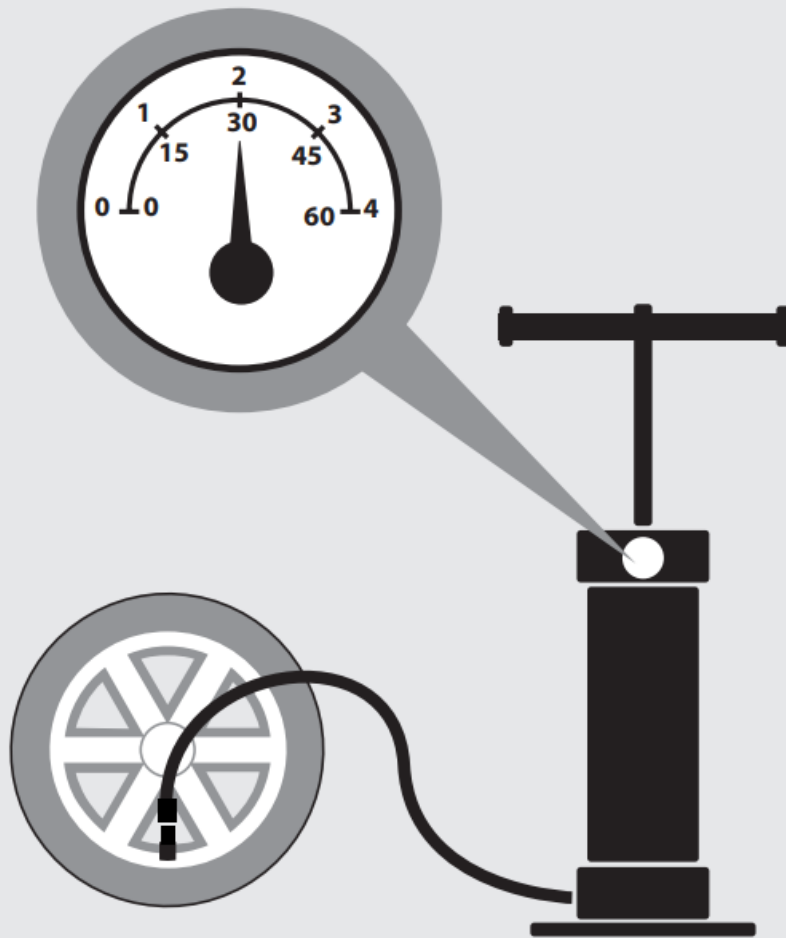




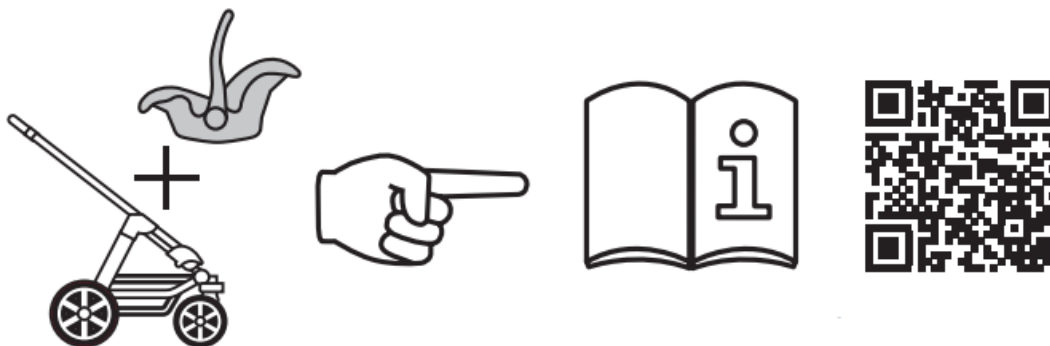




MAX 1,8 BAR (26 PSI)



More Info




- <https://www.abc-design.de/adapter>

Contact

- ABC Design GmbH
- Dr. Rudolf-Eberle Straße 29
- 79774 Albbruck
- Deutschland | Germany
- Tel.: +49 (0) 7753 / 93 93-0
- Fax: +49 (0) 7753 / 93 93-40
- info@abc-design.com
- www.abc-design.com

Documents / Resources

 The image shows a grey, curved, ergonomic running shoe insert. It has the 'ABC DESIGN' logo at the top, 'SALSA 5 RUN' in the middle, and 'Bodentherapie' and 'Innenschuh für den Lauf' in smaller text below. At the bottom, it says 'Think Baby Think Family'.	<p>ABC DESIGN ABC.2025.1 Salsa 5 Run [pdf] Instruction Manual ABC.2025.1 Salsa 5 Run, ABC.2025.1, Salsa 5 Run, 5 Run, Run</p>
---------------------------------------------------------------------------------------------------------------------------------------------------------------------------------------------------------------------------------------------------------------------------------------------------------------------------------------------------	---------------------------------------------------------------------------------------------------------------------------------------------------

References

- [Logo, Graphic & AI Design | Design.com](#)
- [ABC Design | Official Online Store](#)
- [ABC Design UK | Think Baby, Think Family](#)
- [User Manual](#)

Manuals+, Privacy Policy

This website is an independent publication and is neither affiliated with nor endorsed by any of the trademark owners. The "Bluetooth®" word mark and logos are registered trademarks owned by Bluetooth SIG, Inc. The "Wi-Fi®" word mark and logos are registered trademarks owned by the Wi-Fi Alliance. Any use of these marks on this website does not imply any affiliation with or endorsement.