



ABB GEH3417 Molded Case Circuit Breakers Instruction Manual

[Home](#) » [ABB](#) » ABB GEH3417 Molded Case Circuit Breakers Instruction Manual 

Contents

- [1 ABB GEH3417 Molded Case Circuit Breakers](#)
- [2 Industrial Solutions](#)
- [3 ELECTRICAL DATA](#)
- [4 DESCRIPTION](#)
- [5 Documents / Resources](#)
 - [5.1 References](#)
- [6 Related Posts](#)



ABB GEH3417 Molded Case Circuit Breakers



Specifications

- Model: TEDUV1s, TEDUV32ss, TEDUV4s, TEDUV6s, TEDUV7s, TEDUV8s, TEDUV9s, TEDUV10s, TEDUV11s

Rated Voltage

- 120V Ac
- 240V Ac
- 380V Ac
- 480V Ac
- 600V Ac
- 12V Dc
- 24V Dc
- 48V Dc
- 125V Dc
- 250V Dc

MA Current

- Dc: 200, 100, 50
- Ac: 18
- All ratings consume 2.2 watts exclusive of resistor

Description

This device is used for automatic breaker tripping when line voltage drops below a pre-determined level.

Industrial Solutions

GEH3417 INSTALLATION INSTRUCTIONS FOR RIGHT POLE MOUNTING ONLY

- Molded Case Circuit Breakers
- Under voltage Release for Type: TED

CAUTION: Before inspecting or beginning any maintenance work on the breaker, it must be disconnected from all voltage sources, both power and control, and breaker must be off (open).

1. **NOTES:** 1. Any work requiring cover removal of a sealed breaker voids UL listing. The UL label must be destroyed.
2. UVR cannot be installed in breakers code dated with this number or lower: 101

ELECTRICAL DATA

Cat. No. (Right Pole Only)	Rated Voltage	MA Current	
		Dc	Ac
TEDUV1 S	120V Ac	...	18
TEDUV2* S	240V Ac	...	18
TEDUV3* S	380V Ac	...	18
TEDUV4* S	480V Ac	...	18
TEDUV6* S	600V Ac	...	18
TEDUV7 S	12V Dc	200	...
TEDUV8 S	24V Dc	100	...
TEDUV9 S	48V Dc	50	...
TEDUV10 S	125V Dc	18	...
TEDUV11* S	250V Dc	18	...

Kit includes special externally mounted resistor.

ALL RATINGS CONSUME 2.2 WATTS EXCLUSIVE OF RESISTOR

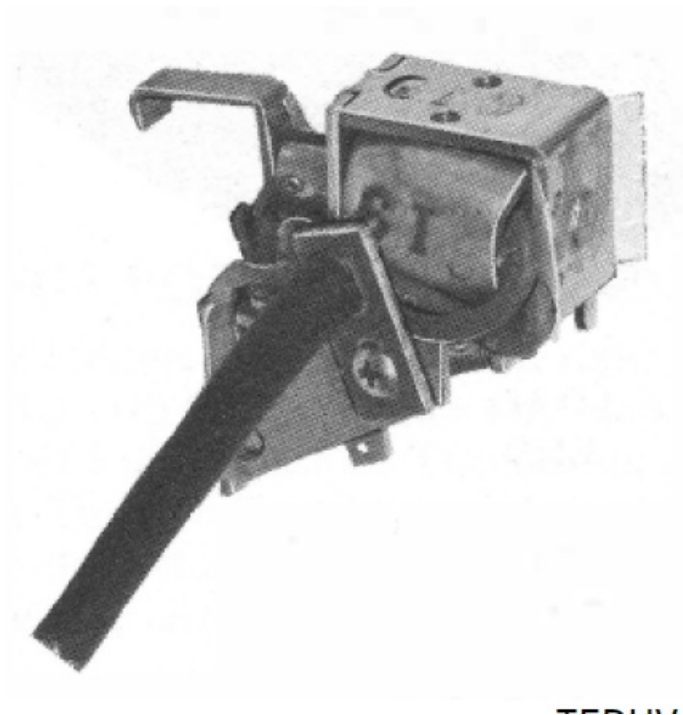
DESCRIPTION

This device is used for automatic breaker tripping when line voltage drops below a pre-determined level.

1. STEP 1

BREAKER PREP ARA TI ON-FOR FIELD INSTALLATION.

Open breaker contacts by moving handle to the breaker "OFF" position.



Remove breaker cover by removing cover screws as shown in Figure 2. (Care must be taken when opening the TB1 as the button shown in Figure 8 may pop out.) Tar must be removed and discarded to gain access to screw shown in Figure 2. Remove and save plastic handle.

Push trip bar towards line end to trip mechanism. (See Figure 3.)

(EIGHT FOR
THLC1, TLB1,
TB1)

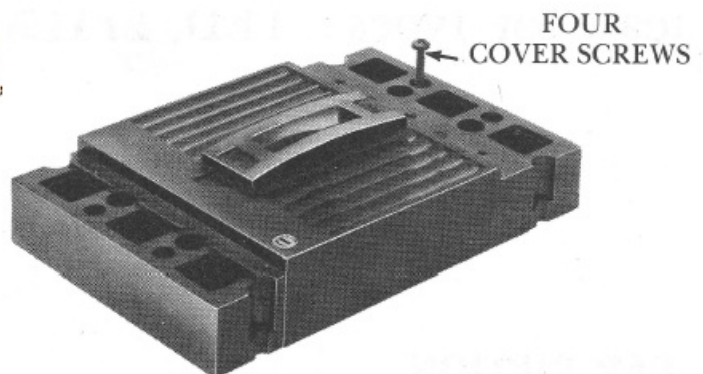


Figure 2.

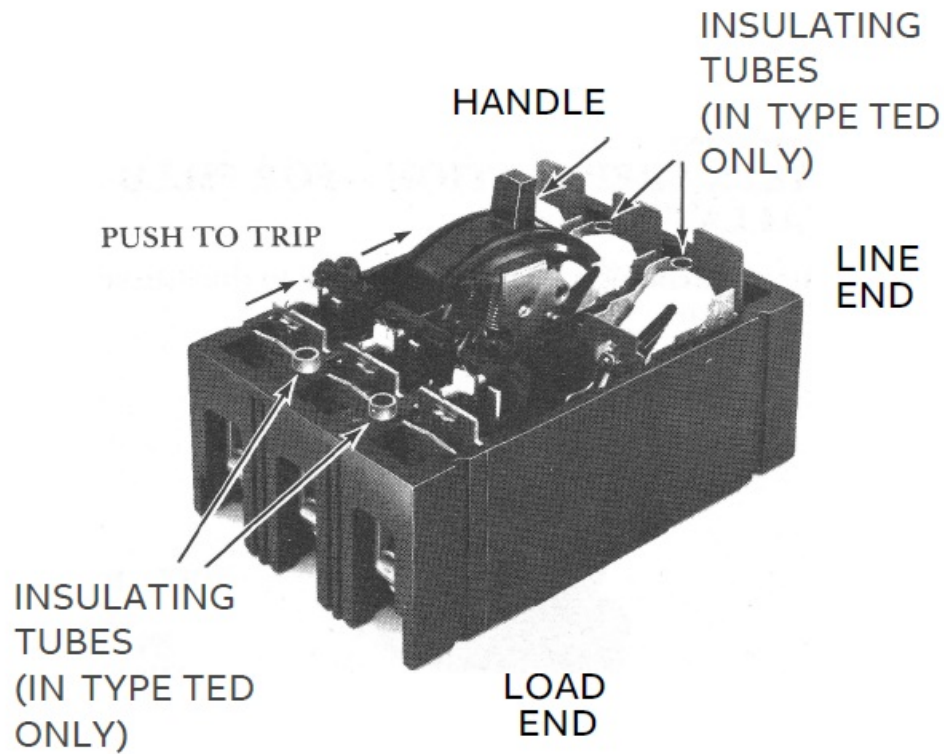


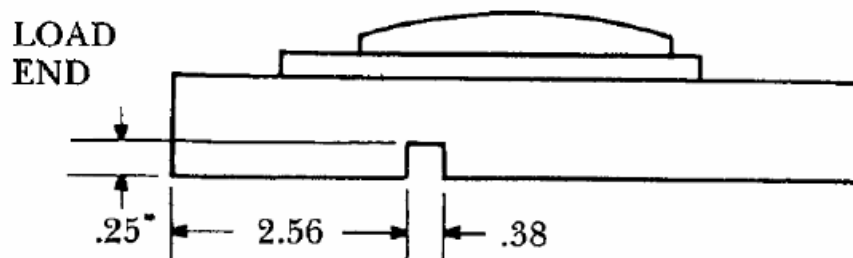
Figure 3.

2. STEP2

MODIFYING COVER

Perform cover modification as shown in Figure 4. Remove all debris.

SIDE WIRING MODIFICATION



CUT NOTCH IN RIGHT SIDE

Figure 4. Side View of Breaker Cover

3. STEP3

MODIFYING TWIST TO TRIP FEATURE

Assembly of the Under voltage Release in the right side of the breaker immobilizes the Twist to Trip feature. Place the enclosed label P/N 331A3044P1 over the Twist to Trip feature button as shown in figure 5. Perform inside cover modification to remove the legs of the Twist to Trip feature (trim even with the Twist to Trip Button) and avoid potential interference with the Undervoltage Release. The trip functionality previously provided by the Twist to Trip feature can be obtained through removal of control voltage to the Under voltage Release.

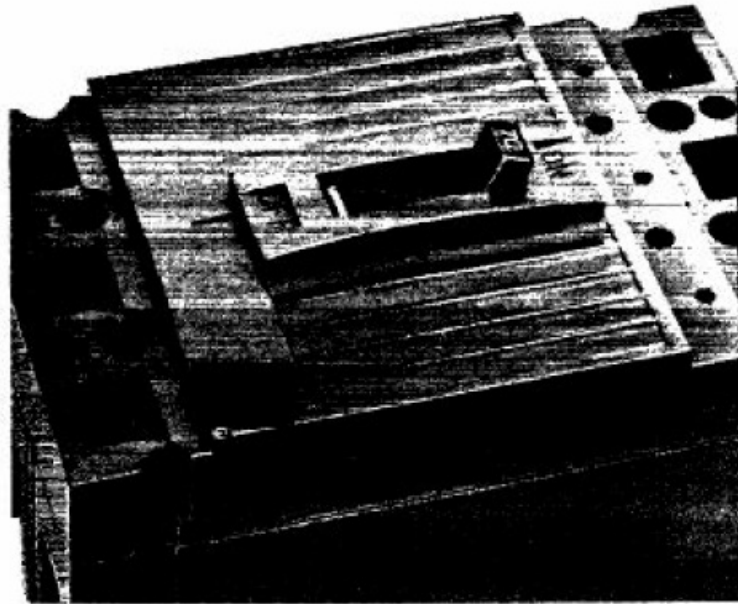


Figure 5.

4. STEP4

REPLACING BARRIER

Remove barrier between right pole and mechanism pole, and replace with barrier supplied with kit. Locate projection of new barrier toward load end of breaker. (See Figure 6.)

BARRIER PROTECTION LOAD END

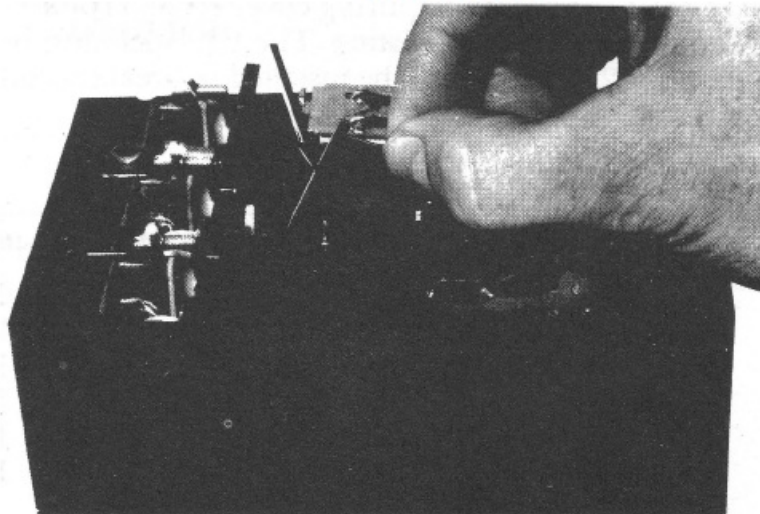


Figure 6.

5. STEP5

INSTALLATION

- Move the handle toward the line end of the breaker to facilitate assembly. Be sure locating tab is plugged into positioning hole in base. (See Figure 7.)
- The pre-positioned coil leads should be close to the current location to fit the notch in the cover.
- Be absolutely sure to reinstall in their proper location barriers or other parts accidentally removed from the breaker. Reinstall plastic breaker handle (white line towards breaker load end).
- Install breaker cover making sure no wires are pinched in the process. Install cover mounting screws and apply label to breaker side.
- Note that on TB1 breakers the second barrier shown in Figures 8 and 9 must be installed

MOVE HANDLE TOWARDS LINE END .

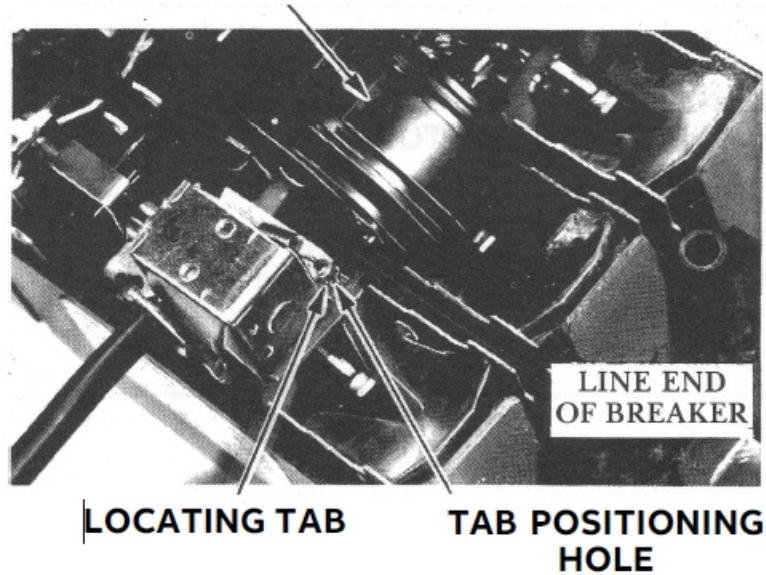


Figure 7.

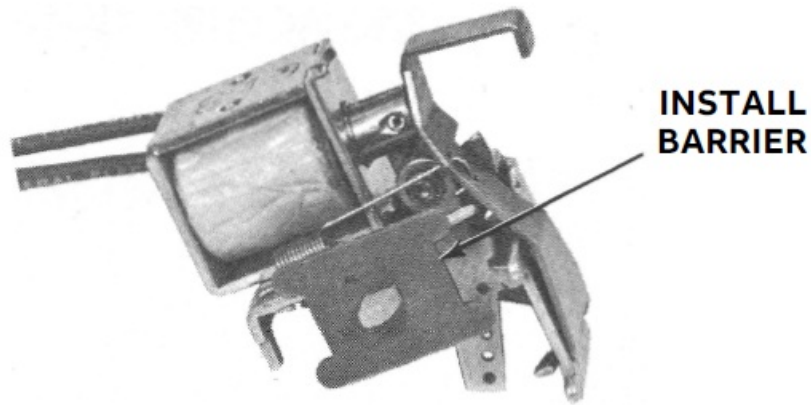


Figure 8.

6. STEP 6

PERFORMANCE CHECK

1. Move breaker handle to "OFF" position to reset breaker.
2. With coil deenergized, move breaker handle towards "ON" position. Breaker should trip and handle should come to rest in the tripped position when released.
3. Apply 80% of rated voltage to coil (use dropping resistor if required). Repeat Step 1, then move handle to "ON" position. Breaker should turn "ON" and stay "ON".
4. Reduce coil voltage. Device should trip breaker between 35% and 70% of rated voltage.

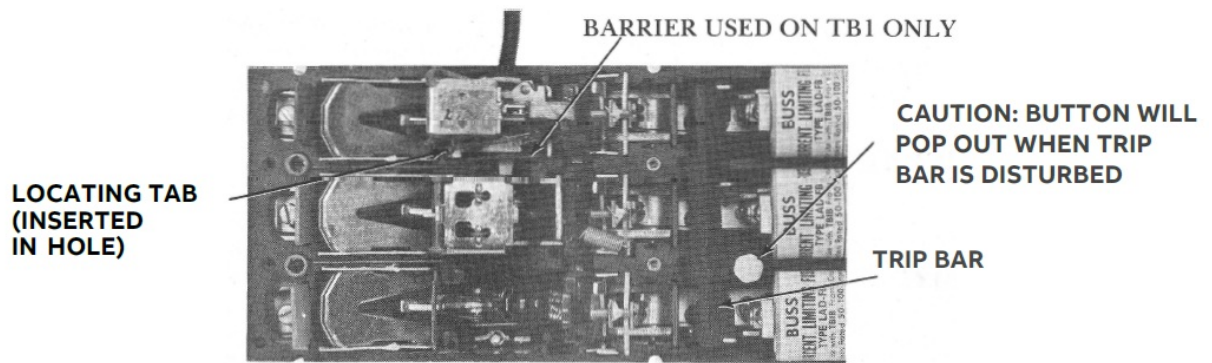


Figure 9.

These instructions do not purport to cover all details or variations in equipment nor to provide for every possible contingency to be met in connection with installation operation or maintenance. Should further information be desired or should particular problems arise which are not covered sufficiently for the purchaser's purposes, the matter should be referred to the ABB Company.—

ABB Inc.

305 Gregson Drive

Cary, NC 27511. electrification.us.abb.com

- GE is a trademark of GE. Manufactured by ABB Inc. under license from GE.
- We reserve the right to make technical changes or modify the contents of this document without prior notice. With regard to purchase orders, the agreed particulars shall prevail. ABB Inc. does not accept any responsibility whatsoever for potential errors or possible lack of information in this document.
- We reserve all rights in this document and in the subject matter and illustrations contained therein. Any reproduction or utilization of its contents – in whole or in parts – is forbidden without prior written consent of ABB Inc.

Copyright© 2019 ABB All rights reserved

1SQC930042M0201, GEH3417 February 2020

Documents / Resources

	<p>ABB GEH3417 Molded Case Circuit Breakers [pdf] Instruction Manual</p> <p>GEH3417 Molded Case Circuit Breakers, GEH3417, Molded Case Circuit Breakers, Case Circuit Breakers, Circuit Breakers, Breakers</p>
--	---

References

- **ABB** [ABB US](#)
- [Manual-Hub.com - Free PDF manuals!](#)
- [User Manual](#)

Manuals+, Privacy Policy

This website is an independent publication and is neither affiliated with nor endorsed by any of the trademark owners. The "Bluetooth®" word mark and logos are registered trademarks owned by Bluetooth SIG, Inc. The "Wi-Fi®" word mark and logos are registered trademarks owned by the Wi-Fi Alliance. Any use of these marks on this website does not imply any affiliation with or endorsement.