

aarke Purifier Large Water Filter Pitcher



aarke Purifier Large Water Filter Pitcher User Guide

[Home](#) » [aarke](#) » aarke Purifier Large Water Filter Pitcher User Guide 



Contents

- 1 aarke Purifier Large Water Filter Pitcher
- 2 Product Information
- 3 Product Usage Instructions
- 4 Items and components
- 5 How to use
- 6 Maintenance and Recycling
- 7 Detailed design
- 8 Safety guidelines
- 9 Documents / Resources
 - 9.1 References
- 10 Related Posts

aarke Purifier Large Water Filter Pitcher



Product Information

The Purifier Large is designed to improve the quality of tap water by using filter cartridges and granules. It is suitable for use in the USA and Canada. The product comes with a filter cartridge and filter refill granules to ensure clean and fresh drinking water.

Specifications:

- **Product Name:** Purifier Large
- **Usage:** Water purification
- **Region:** USA and Canada

Product Usage Instructions

Cleaning and Preparation:

1. Clean the Purifier before first use or when changing granules by using mild soapy water and rinsing thoroughly with warm water. Avoid abrasive cleaning agents or scrubbing sponges.

How to Use:

1. Add the filter granules to the filter cartridge and close the lid.
2. Place the filter cartridge in tap water for 5 minutes and then discard the water.
3. Insert the filter cartridge in the hopper.
4. Fill the hopper with cold tap water, rinse once, and ensure no granules are present in the water.
5. Enjoy the purified water!

Maintenance and Recycling:

- Granules should be replaced after 8 weeks or after filtering 120 liters of water. Dispose of used granules in household waste.
- Wash the filter cartridge before refilling with new granules.
- Store the Purifier in the fridge for optimal water quality.

Refill Reminder:

Use the refill reminder in the lid to track when granules were last replaced. Regular replacement ensures optimal water quality.

Cleaning:

Clean the Purifier weekly. All parts are dishwasher-safe for easy cleaning.

Safety Recommendation:

For 100% product safety, it is recommended to boil the filter before use.

FAQ:

- **Q: How often should I clean the Purifier?**

A: It is recommended to clean the Purifier at least once a week for optimal performance.

- **Q: How long can I use the granules before replacing them?**

A: The granules should be replaced every 8 weeks or after filtering approximately 120 liters of water.

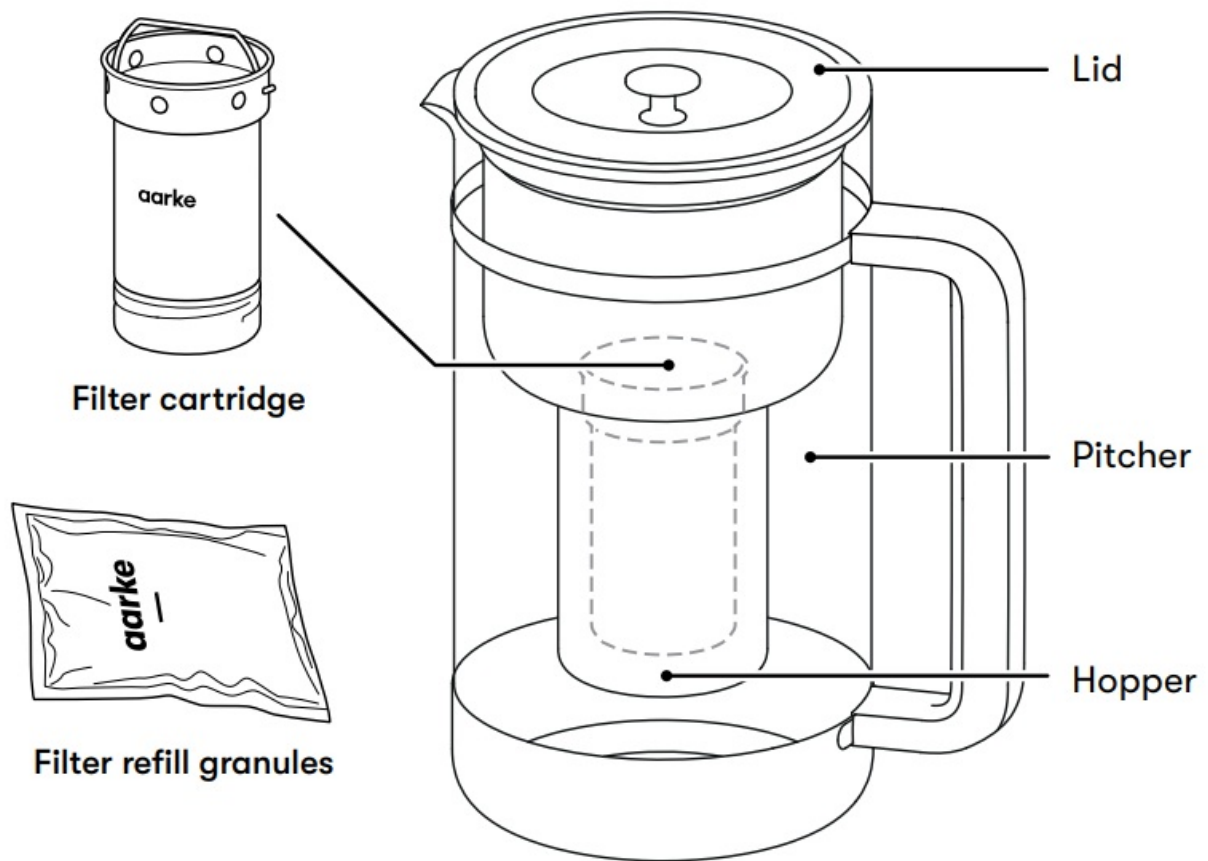
Making water better.

You have just invested in a modern take on water filtration made almost entirely out of stainless steel and glass. No plastic filters, no plastic pitcher – time to say goodbye to disposable and hello to durable. Now that you've said it, please continue reading:

Your new Aarke Purifier is easy to use, easy to clean, more friendly to our planet and designed to elevate any dinner table. A combination of function and elegance. Alongside the Purifier, we offer filter granules produced in collaboration with BWT, one of the world's leading water technology companies. All in all, you get perfectly filtered, pure-tasting water in combination with health benefits. And a filter pitcher for the ages.

Items and components

Included items

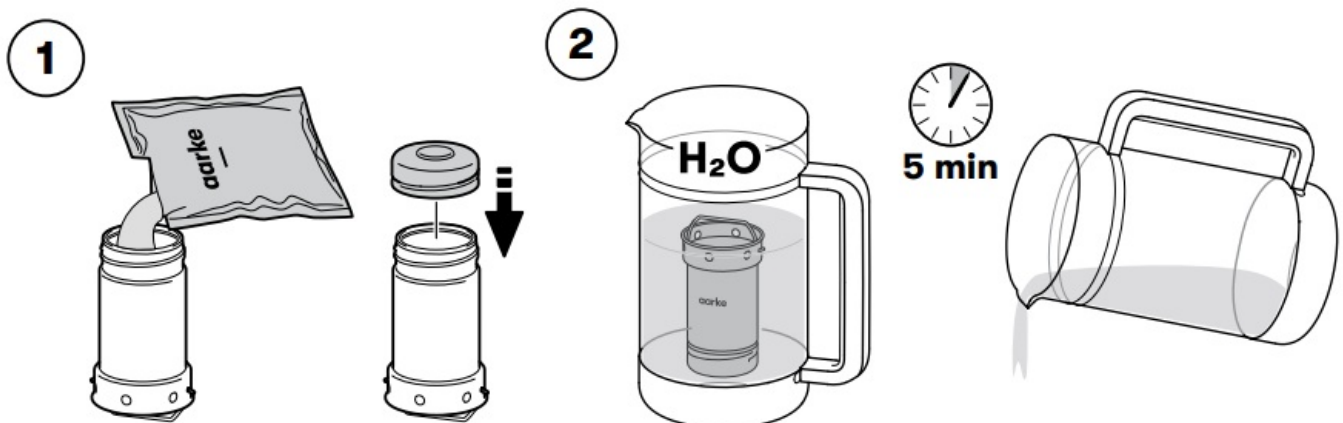


Technical specifications

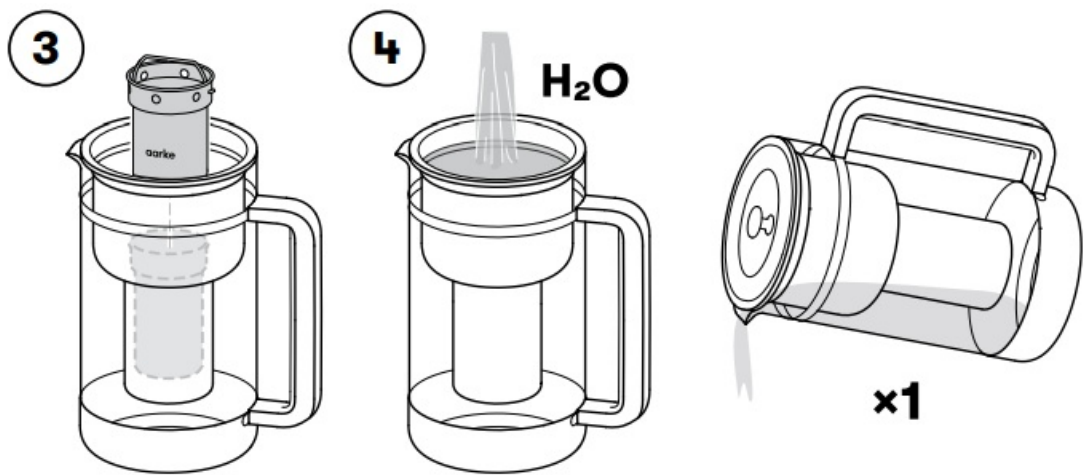
- **Height** ~ 250 mm
- **Pitcher Ø** ~ 137 mm
- **Weight** ~ 1150 g
- **Filter capacity** ~ 1.66 L (7 cups)
- **Total volume** ~ 2.84 L (12 cups)

How to use

Clean the Purifier prior to the first use or when changing the used granules. Use mild soapy water and rinse thoroughly with warm water. Do not use abrasive cleaning agents or scrubbing sponges.

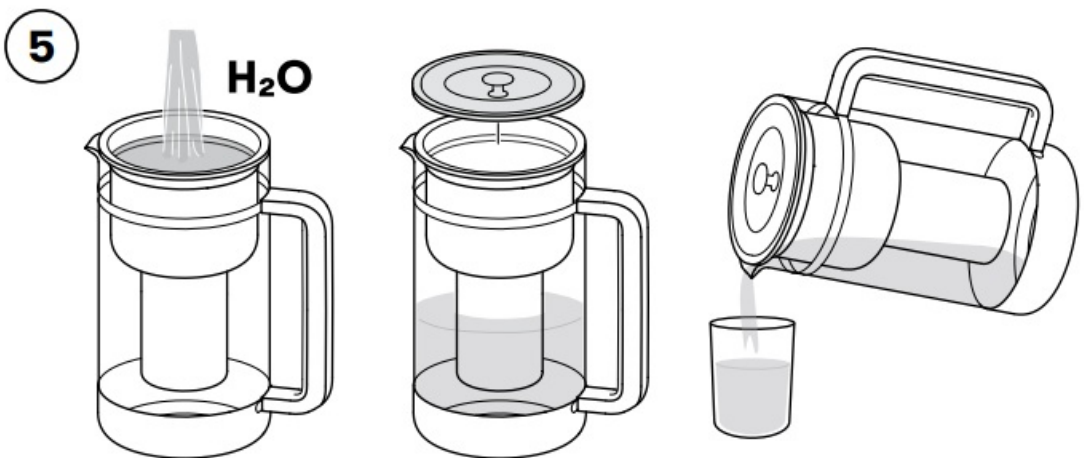


1. Add the filter granules to the filter cartridge. Close the filter cartridge lid.
2. Place the filter cartridge in tap water for 5 minutes. Discard the water.



3. Place the filter cartridge in the hopper.

4. Fill the hopper with cold tap water. Rinse out once. Make sure that there is no granules in the water.



5. Enjoy!

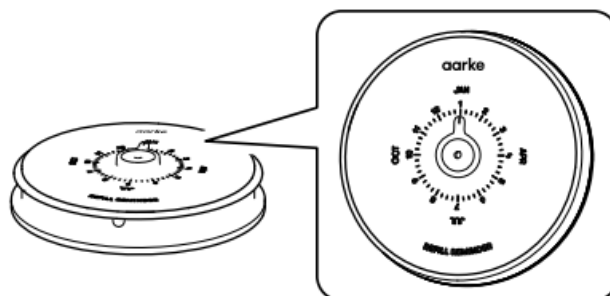
Maintenance and Recycling

Change the granules

The granules can be used for 8 weeks or for 120 liters/31,7 GAL of filtered water. Thereafter the granules are to be replaced. The granules should be disposed in the household waste. Wash the filter cartridge before you fill it with new granules. For best quality of water, store the Purifier in the fridge.

Refill reminder

The granules must be replaced after 8 weeks. Use the refill reminder in the lid to keep track of when the granules was last replaced. Optimal water is only guaranteed if the granules are changed regularly.



Cleaning

Clean the Purifier at least once a week. All parts can be washed in the dishwasher. For 100% product safety, We recommend that you boil the filter cartridge once a week for hygienic reasons. Put the filter cartridge, including the granules, in boiling water for 3 minutes. Let it cool. Place the filter cartridge in the hopper and fill with water. Rinse once.



Lime residues

Lime residues can be removed with limescale removal agents. Do not use steel wool.

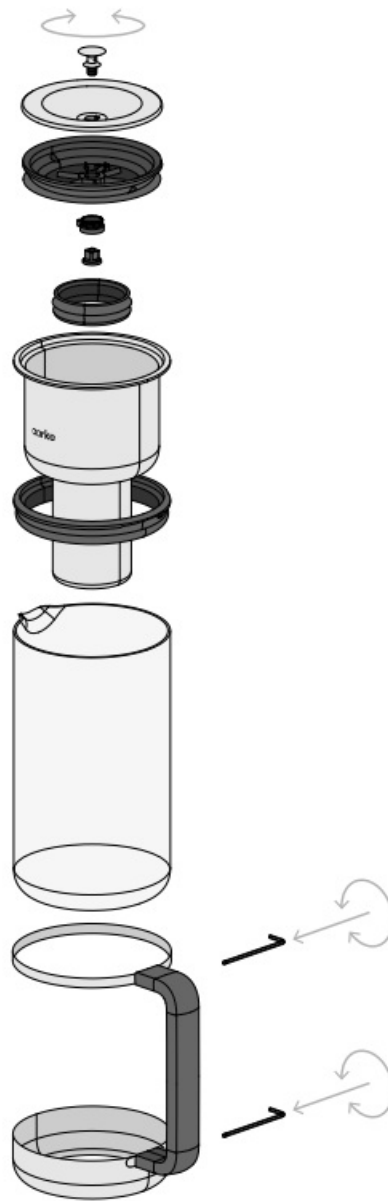
Store the Filter refill granules

- The Filter refill granules should always be kept in the original packing foil until the granules are to be changed.
Don't open before use.
- The Filter refill granules are to be stored in a cool, dry place and may not be exposed to direct sunlight.

Recycling

The Purifier and its associated items are designed and manufactured with high quality materials and components which can be recycled and reused. Separate the parts of the Purifier, including the packaging, and recycle them according to local regulations.

Detailed design



Safety guidelines

- This product may only be used with cold water fulfilling the legal requirements on drinking water quality.
- The water filter is unsuitable for production of drinking water, e.g. the filter may not be used for treatment of contaminated water.
- The filtered water is intended for short-term use. It may not be exposed to direct sunlight, is to be stored in a cool place and not longer than 24 hours. If the filtered water is kept longer than 24 hours in the Purifier, evaporation of water may cause white marks in the jug. Remove these through cleaning.
- After filtering 3 liters continuously, make a 15-minute pause.
- Permanent water contact to the filter cartridge is not particularly necessary in order to guarantee long-term operation of the filter cartridge. The filter cartridge continues to function, even if it is taken out of the water for some time.
- If, officially, you are requested to boil the tap water due to contamination, this applies to Aarkes filtered water. When the authorities classify the tap water again as harmless, the filter granules must be changed and the Purifier must be cleaned.
- For certain groups, e.g. people with limited immune defence and for preparation of baby food, the filtered water is to be boiled.

- Do not eat the granules.
- For hygienic reasons, the filter granules contain small quantities of silver that may be given off to the water. It is harmless and in compliance with the World Health Organization recommendations for potable water.
- The filter granules should be replaced after 8 weeks of use.
- In order to guarantee the drinkability of the treated water and to maintain the improvements as declared by the manufacturer, this product requires regular maintenance.
- If the use is interrupted, keep the Purifier and the filter cartridge in the fridge. In case of interruption of use for more than 2 days, pour out the water and refill.

After a downtime of more than 2 weeks, replace the filter granules.

- Glass product, handle with care.
- Keep the product away from children.
- To prevent bacterial growth. Always place the lid facing up.



- The service life of the filter granules varies according to the location where it is used, as the quality of the water is not the same everywhere. The capacity of the filter granules depends on the hardness of the water. The harder the water, the earlier the filter granules will be exhausted.

Customer support

FAQ and troubleshooting

Do you have a problem with your Purifier? Scan the QR code or go to support at aarke.com.



Customer support

If the troubleshooting guide doesn't help, please contact us at support@aarke.com.

Aarke AB

Hälsingegatan 49,
113 31 Stockholm, Sweden

aarke.com/support

aarke.com

Documents / Resources

<div>Purifier Large</div> <div><small>Use Only as Directed Under All Normal and Reasonable Conditions Always use with filter pitcher</small></div> <div>aarke</div>	<div>aarke Purifier Large Water Filter Pitcher [pdf] User Guide</div> <div>Purifier Large Water Filter Pitcher, Purifier Large, Water Filter Pitcher, Filter Pitcher, Pitcher</div>
---	---

References

- [aarke Aarke Official Website | Aarke](#)
- [User Manual](#)

[Manuals+](#), [Privacy Policy](#)

This website is an independent publication and is neither affiliated with nor endorsed by any of the trademark owners. The "Bluetooth®" word mark and logos are registered trademarks owned by Bluetooth SIG, Inc. The "Wi-Fi®" word mark and logos are registered trademarks owned by the Wi-Fi Alliance. Any use of these marks on this website does not imply any affiliation with or endorsement.