

A4TECH

FB20,FB20S Dual Mode Mouse



A4TECH FB20,FB20S Dual Mode Mouse User Guide

[Home](#) » [A4TECH](#) » A4TECH FB20,FB20S Dual Mode Mouse User Guide 

Contents

- 1 A4TECH FB20,FB20S Dual Mode Mouse
- 2 Product Usage Instructions
- 3 WHAT'S IN THE BOX
- 4 KNOW YOUR PRODUCT
- 5 CONNECTING 2.4G DEVICE
- 6 CONNECTING BLUETOOTH DEVICE 1
- 7 INDICATOR
- 8 Q & A
- 9 WARNING STATEMENT
- 10 Documents / Resources
 - 10.1 References

A4TECH

A4TECH FB20,FB20S Dual Mode Mouse



Specifications

- **Model:** FB20 / FB20S
- **Connectivity:** Bluetooth, 2.4G
- **Power Source:** 2 AAA Alkaline Batteries
- **Compatibility:** Mobile Phone, Tablet, Laptop
- **Devices Supported:** Up to 3 (2 Bluetooth, 1 2.4G)

Product Usage Instructions

Connecting 2.4G Device

1. Plug the 2.4G receiver into the computer's USB port.
2. Turn the mouse power switch on.
3. Wait for the red and blue lights to flash for 10 seconds. The light will turn off once connected.

Connecting Bluetooth Device 1

1. Short-press the Bluetooth button and select Device 1 (Indicator shows blue light for 5 seconds).
2. Long-press the Bluetooth button for 3 seconds until the blue light flashes slowly for pairing.
3. Turn on Bluetooth on your device, search for the BT name "A4 FB20", and connect.
4. Once connected, the indicator will stay solid blue for 10 seconds before turning off automatically.

Connecting Bluetooth Device 2

1. Short-press the Bluetooth button and select Device 2 (The indicator shows a red light for 5 seconds).

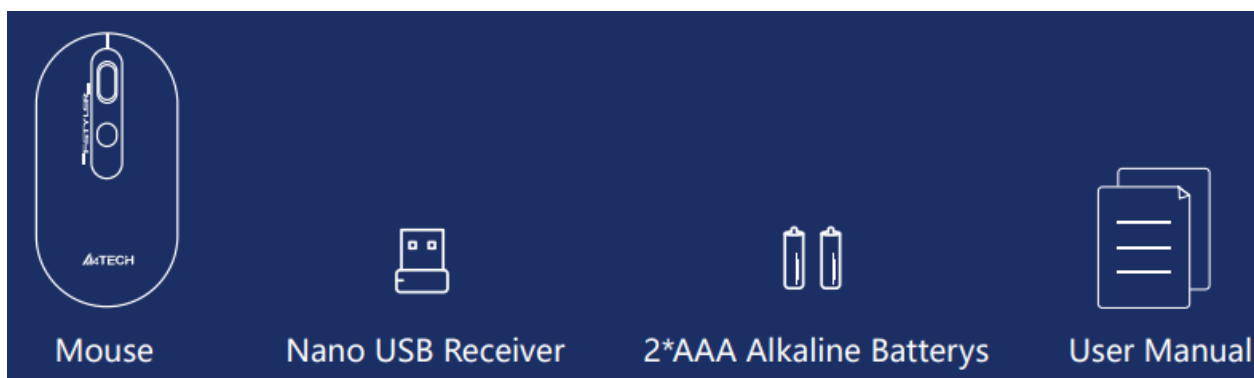
2. Long-press the Bluetooth button for 3 seconds until the red light flashes slowly for pairing.
3. Turn on Bluetooth on your device, search for the BT name "A4 FB20", and connect.
4. Once connected, the indicator will stay solid red for 10 seconds before turning off automatically.

Warning Statement

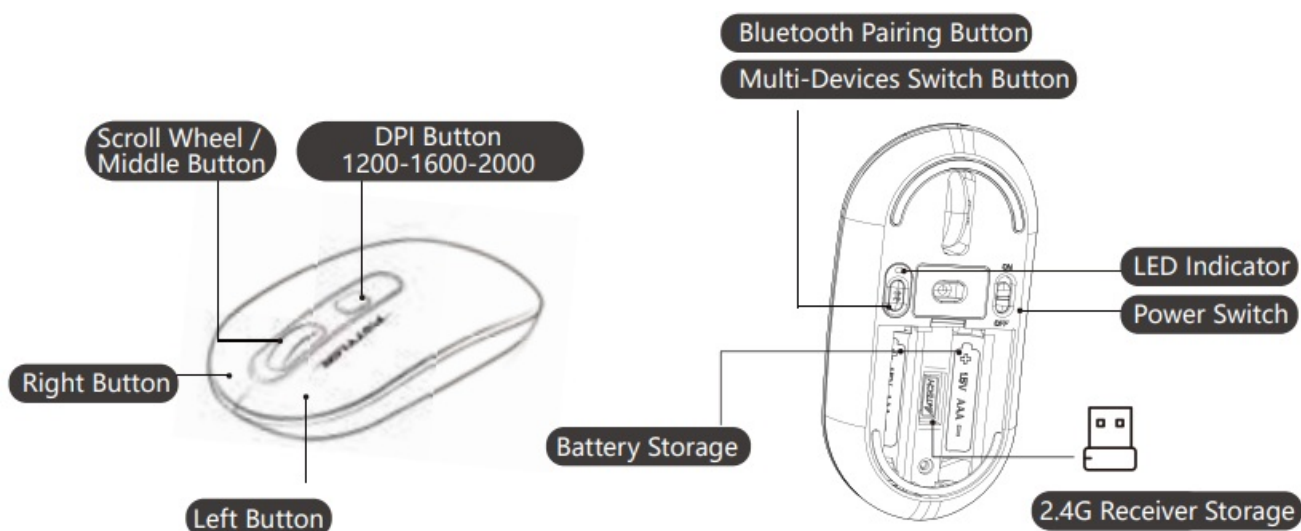
The following actions may cause damage to the batteries:

1. Disassembling, bumping, crushing, or throwing into fire.
2. Avoid exposure to strong sunlight.
3. Obey local laws when discarding batteries and consider recycling options.
4. Avoid using it if there is swelling or leakage.
5. Do not charge the battery.

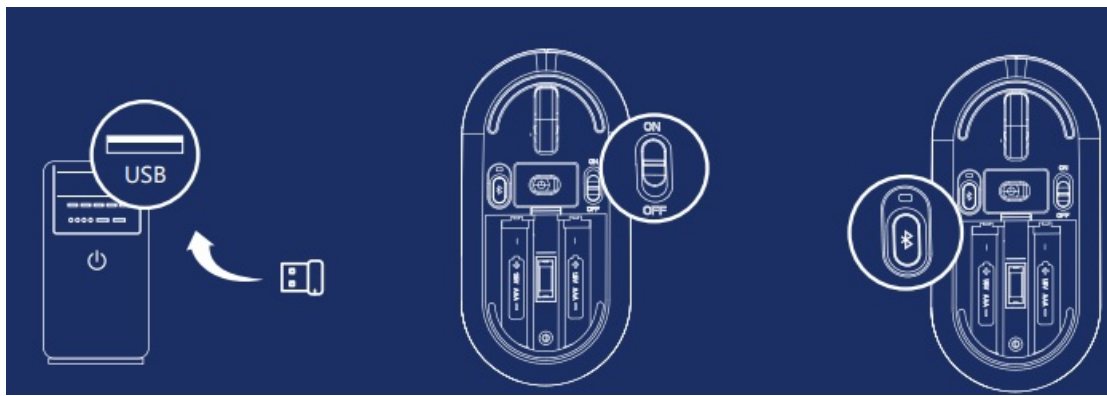
WHAT'S IN THE BOX




KNOW YOUR PRODUCT



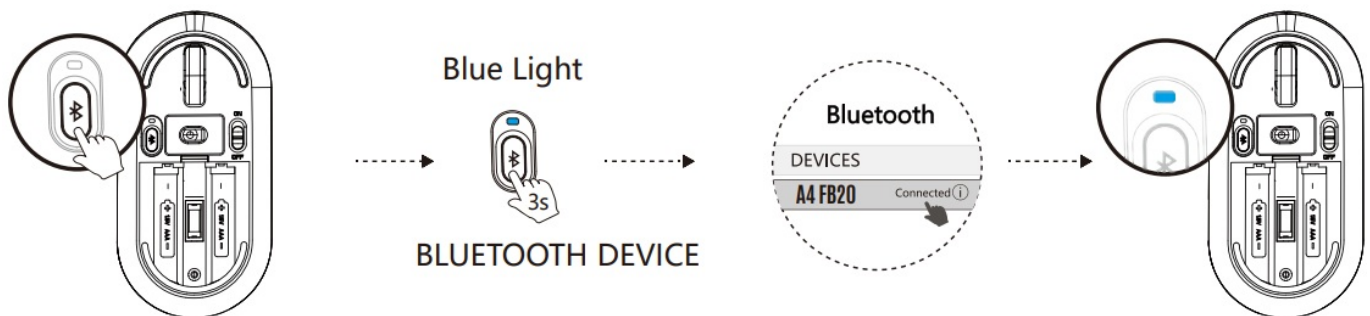
CONNECTING 2.4G DEVICE



1. Plug the receiver into the computer's USB port.
2. Turn the mouse power switch on.
3. **Indicator** 
 - The red and blue light will flash (10S). The light will be off after connected.

CONNECTING BLUETOOTH DEVICE 1

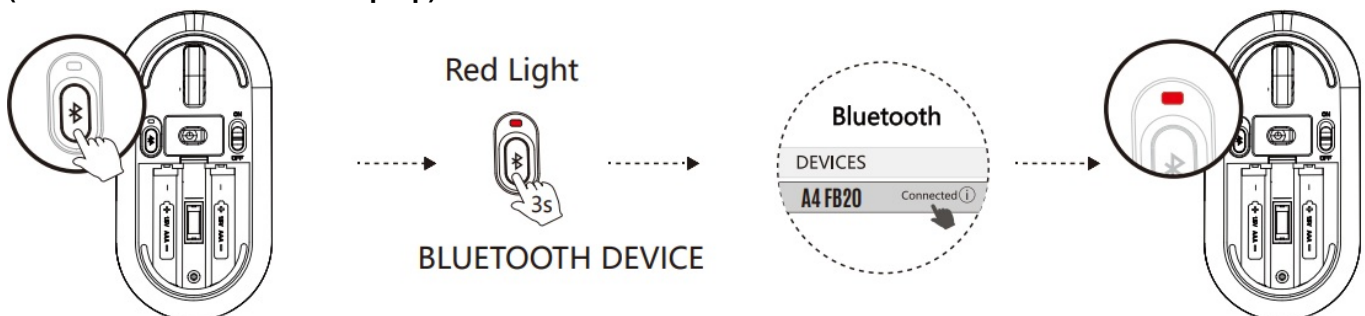
(For Mobile Phone/Tablet/Laptop)



1. Short-press the Bluetooth button and choose Device 1 (The indicator shows a blue light for 5S).
2. Long-press the Bluetooth button for 3S and blue light flashes slowly when pairing.
3. Turn on the Bluetooth of your device, search and locate the BT name on the device: A4 FB20]
4. After the connection is established, the indicator will be solid blue for 10S then off automatically.

CONNECTING BLUETOOTH DEVICE 2

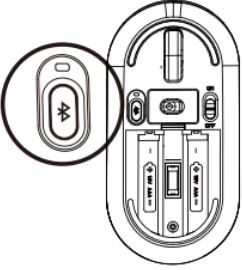
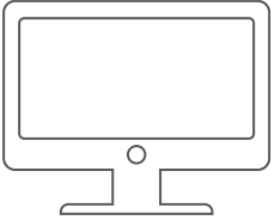


(For Mobile Phone/Tablet/Laptop)



1. Short-press the Bluetooth button and choose Device 2 (The indicator shows a red light for 5S).
2. Long-press the Bluetooth button for 3S and red light flashes slowly when pairing
3. Turn on the Bluetooth of your device, search and locate the BT name on the device: A4 FB20

4. After a connection is established, the indicator will be solid red for 10S then off automatically.

INDICATOR

				 LOW BATTERY INDICATOR Flashing Red light indicates when the battery is below 25% 	
MOUSE		2.4G DEVICE		BLUETOOTH DEVICE 1	
				BLUETOOTH DEVICE 2	
○ Indicator		■ Red and Blue Light		■ Blue Light	
Ⓜ Switch Device: Short-Press 1S		Flashes Quickly 10S		Solid Light 5S	
Ⓜ Pair Device: Long-Press For 3S		No Need to Pair		Pairing: Flashes Slowly Connected: Solid Light 10S	

Q & A

Question How many total devices can be connected at a time?

Answer Interchange and connect up to 3 devices at the same time. 2 Devices with Bluetooth +1 Device with 2.4G Hz.

Question Does the mouse remember connected devices after power off?

Answer The mouse will automatically remember and connect the last device. You may switch the devices as you choose to.

Question How do I know what device is currently connected to?

Answer When the power is turned on, the indicator light will be displayed for 10S.

Question How to switch connected Bluetooth devices?

Answer Repeat the procedure of connecting Bluetooth devices.

WARNING STATEMENT

The following actions may/will cause damage to the batteries.

1. To disassemble, bump, crush, or throw into the fire, you may cause irrefutable damages.
2. Do not be exposed to strong sunlight.
3. Please obey all local laws when discarding the batteries, if possible please recycle them.
Do not dispose of it as household garbage, it may cause a fire or an explosion.

4. Please do not use it if there is swelling or leakage.
5. Do not charge the battery.



FSTYLER
COLLECTION



Scan for E-Manual

www.a4tech.com Scan for E-Manual

Documents / Resources

A thumbnail image of the user guide for the A4TECH FB20,FB20S Dual Mode Mouse. The document is titled 'QUICK START GUIDE' and includes sections for 'WHAT'S IN THE BOX', 'KNOW YOUR PRODUCT', 'CONNECTING 2.4G DEVICE', 'CONNECTING BLUETOOTH DEVICE 1', 'CONNECTING BLUETOOTH DEVICE 2', 'INDICATOR', 'Q & A', and 'WARNING STATEMENT'. The A4TECH logo is visible at the bottom.	<p>A4TECH FB20,FB20S Dual Mode Mouse [pdf] User Guide FB20 FB20S, FB20 FB20S Dual Mode Mouse, Dual Mode Mouse, Mode Mouse, Mouse</p>
--	--

References

- ch.com
- [User Manual](#)

[Manuals+](#), [Privacy Policy](#)

This website is an independent publication and is neither affiliated with nor endorsed by any of the trademark owners. The "Bluetooth®" word mark and logos are registered trademarks owned by Bluetooth SIG, Inc. The "Wi-Fi®" word mark and logos are registered trademarks owned by the Wi-Fi Alliance. Any use of these marks on this website does not imply any affiliation with or endorsement.