

**A4TECH** EST. 1987  
**FBK36C AS**  
**Bluetooth**  
**and 2.4G**  
**Keyboard**



# A4 TECH FBK36C AS Bluetooth and 2.4G Keyboard User Guide

[Home](#) » [A4 TECH](#) » A4 TECH FBK36C AS Bluetooth and 2.4G Keyboard User Guide 

## Contents

- [1 A4 TECH FBK36C AS Bluetooth and 2.4G Keyboard](#)
- [2 Product Usage Instructions](#)
- [3 Frequently Asked Questions](#)
- [4 WHAT'S IN THE BOX](#)
- [5 DESCRIPTION](#)
- [6 CONNECTION](#)
- [7 OPERATING SYSTEM SWAP](#)
- [8 ONE-TOUCH 4 HOTKEYS](#)
- [9 FN MULTIMEDIA KEY COMBINATION SWITCH](#)
- [10 DUAL-FUNCTION KEY](#)
- [11 CHARGING & INDICATOR](#)
- [12 SPECIFICATIONS](#)
- [13 Q & A](#)
- [14 WARNING STATEMENT](#)
- [15 Documents / Resources](#)
  - [15.1 References](#)
- [16 Related Posts](#)

**A4TECH** EST. 1987

**A4 TECH FBK36C AS Bluetooth and 2.4G Keyboard**



## Specifications:

- **Keyboard Type:** Bluetooth/2.4G Wireless
- **Connectivity:** USB Nano Receiver, Bluetooth Device 1, Bluetooth Device 2
- **Compatibility:** PC, MAC, Mobile Phones, Tablets, Laptops
- **Power Source:** Type-C Charging Cable

## Product Usage Instructions

### Connecting Bluetooth Device 1:

1. Short-press the Bluetooth Device 1 Button until the red light flashes slowly for pairing. (Re-Pairing: Long-press Bluetooth Device 1 Button for 3 seconds)
2. From your Bluetooth device, select [A4 FBK36C AS]. The indicator will turn solid red for a while and then turn off after the keyboard is connected.

### Connecting Bluetooth Device 2:

1. Short-press the Bluetooth Device 2 Button until the red light flashes slowly for pairing. (Re-Pairing: Long-press Bluetooth Device 2 Button for 3 seconds)
2. From your Bluetooth device, select [A4 FBK36C AS]. The indicator will turn solid red for a while and then turn off after the keyboard is connected.

### Connecting via 2.4G:

1. Plug the receiver into the computer's USB port.
2. Use the Type-C adaptor to connect the receiver with the computer's Type-C port.
3. Turn on the keyboard power switch. Short-press 2.4G button, the indicator will be solid red for a while then light off after the keyboard is connected.

### Operating System Swap:

The default system layout is Windows/Android. To switch layouts:

- Long-press the System Shortcut for 3 seconds to change the layout.
- The indicator will indicate the current layout (iOS, Mac, Windows & Android).

**Anti-Sleep Setting Mode:**

To prevent PC sleep mode, press both buttons for 1 second to activate the Anti-Sleep Setting Mode.

**One-Touch Hotkeys:**

- Screenshot Options
- Emoji Symbols
- Hide Application
- Lock Computer

**Frequently Asked Questions**

Q: How can I switch between connected devices?

A: Use the Multi-Device Switch by short-pressing for 1 second to switch between devices.

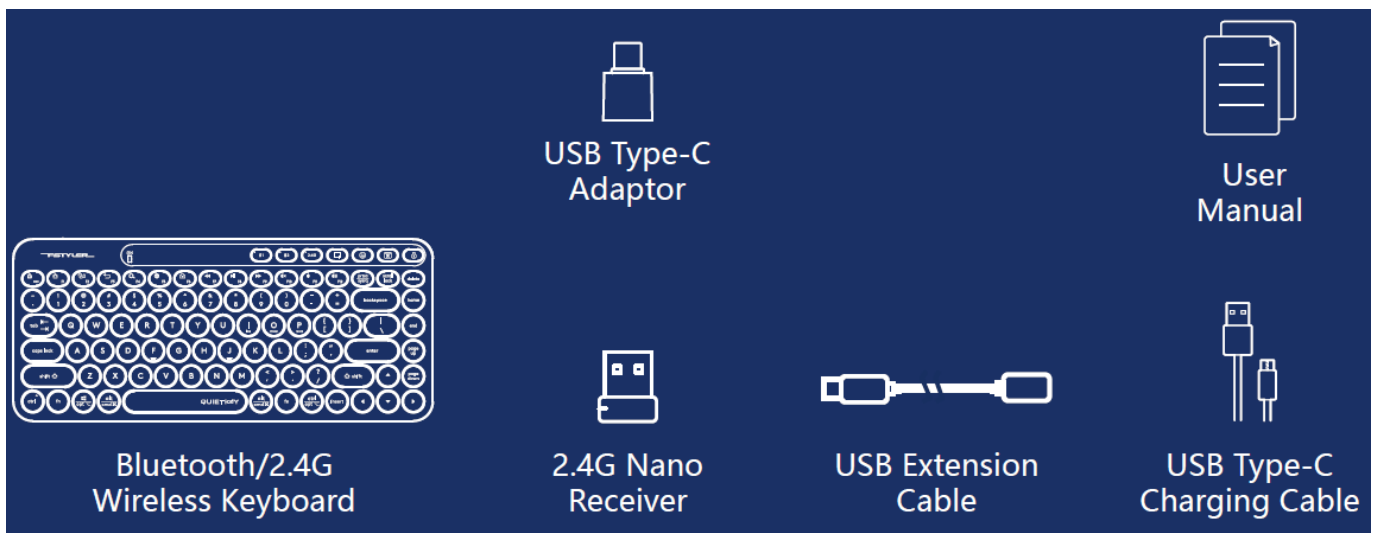
Q: How do I lock/unlock the Fn mode?

A: Lock & unlock Fn mode by short pressing FN + ESC. FN shortcut is locked in FN mode by default after pairing.

Q: How can I adjust volume and media controls?

A: Use multimedia and internet hotkeys for volume adjustment, play/pause, track switching, and more.

**WHAT'S IN THE BOX**



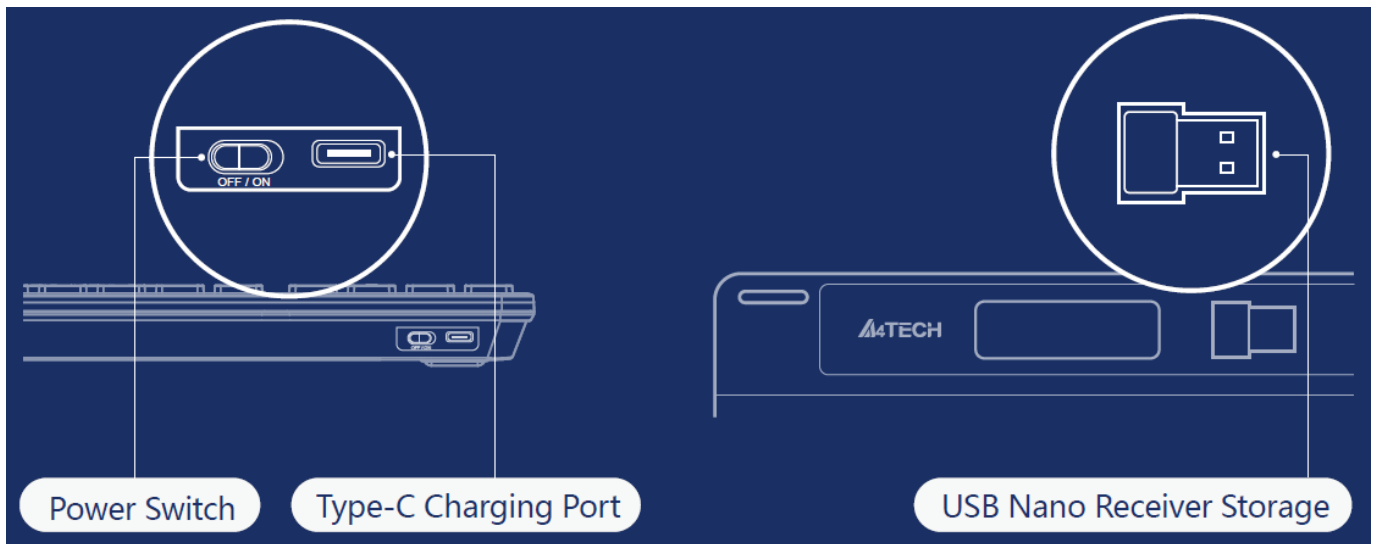
## DESCRIPTION

### THE FRONT



1. FN Locking Mode
2. 12 Multimedia & Internet Hotkeys
3. Multi-Device Switch
4. One-Touch 4 Hotkeys
5. Operating System Swap
6. PC/MAC Dual-Function Keys

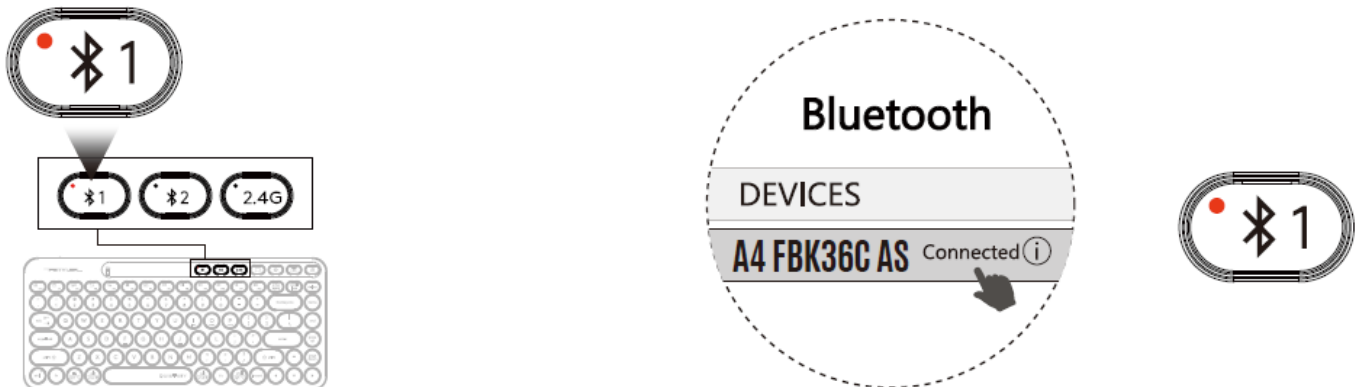
### THE FLANK/BOTTOM



## CONNECTION

### CONNECTING BLUETOOTH DEVICE 1

(For Mobile Phone/Tablet/Laptop)



1. **Short-press**  **Bluetooth Device 1 Button** and the red light flashes slowly when pairing.

(Re-Pairing: Long-press  Bluetooth Device 1 Button for 3S)

2. **Choose [A4 FBK36C AS] from your Bluetooth device.**

The indicator will be solid red for a while then light off after the keyboard is connected.

### CONNECTING BLUETOOTH DEVICE 2

(For Mobile Phone/Tablet/Laptop)



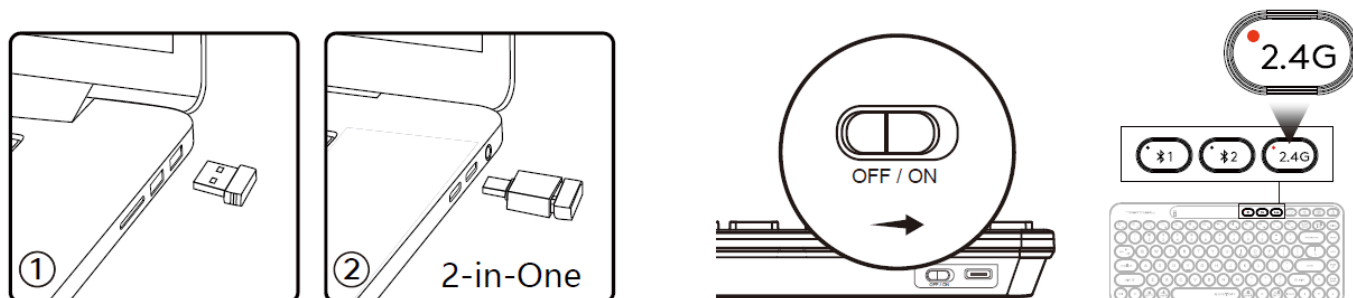
1. Short-press  Bluetooth Device 2 Button and the red light flashes slowly when pairing.

(Re-Pairing: Long-press  Bluetooth Device 2 Button for 3S)

2. Choose [A4 FBK36C AS] from your Bluetooth device.

The indicator will be solid red for a while then light off after the keyboard is connected.



## CONNECTING 2.4G DEVICE



1. Plug the receiver into the computer's USB port.
2. Use the Type-C adaptor to connect the receiver with the computer's Type-C port.
2. Turn on the keyboard power switch. Short-press 2.4G button, the indicator will be solid red for a while then light off after the keyboard is connected.

## OPERATING SYSTEM SWAP

Windows/Android is the default system layout.

System	Shortcut [Long-Press for 3S]	Device / Layout Indicator
iOS	 + 	Light will be off after flashing.
Mac	 + 	
Windows & Android	 + 	

### Note:

The layout you used last time will be remembered. You can switch the layout by following the above step.

## INDICATOR (For Mobile Phone/Tablet/Laptop)



Keyboard



2.4G Device



Bluetooth Device 1

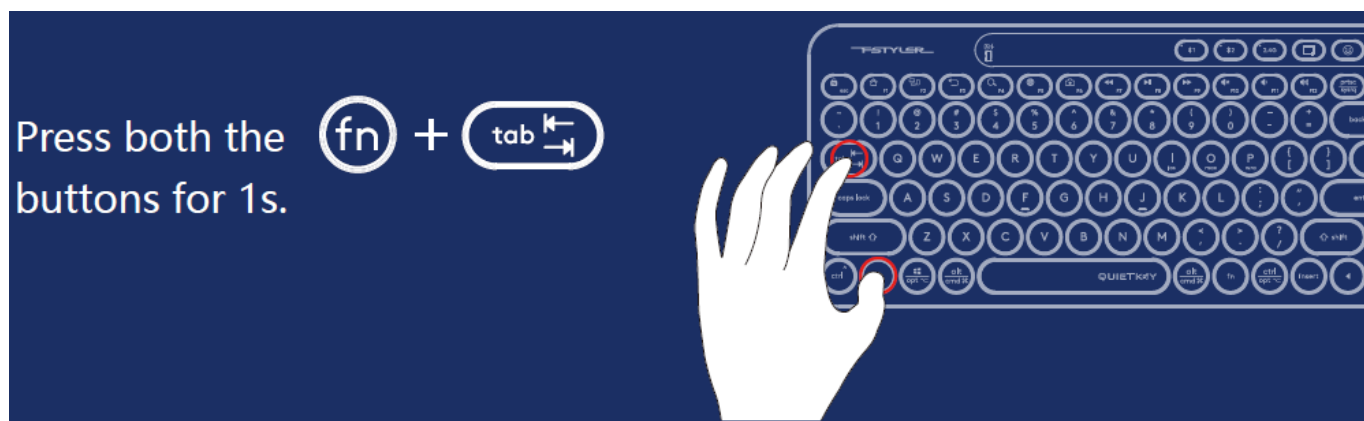


Bluetooth Device 2

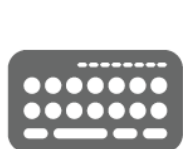
Indicator	Red Light	Red Light	Red Light
Multi-Device Switch			
Device Switch: Short-Press for 1S	Solid Light 5S		
First Pair: Short Press 1S Re-Pair: Long Press 3S	Solid Light 5S	Pairing: Flashes Slowly Connected: Solid Light 10S	

## ANTI-SLEEP SETTING MODE

- To prevent your PC from entering the sleep-mode setting while you are away from your desk, simply turn on our new Anti-Sleep Setting Mode for PC.
- It will automatically simulate the cursor movement once you turn it on.
- Now you may take an hour nap while downloading your favorite movie.



## ONE-TOUCH 4 HOTKEYS



Screenshot Options



Emoji Symbols



Hide Application



Lock Computer

## FN MULTIMEDIA KEY COMBINATION SWITCH

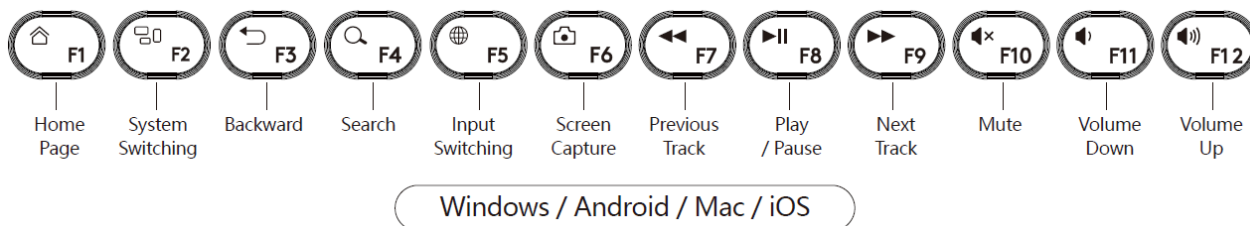
**FN Mode:** You can lock & unlock Fn mode by short-pressing FN + ESC by turn.



1. **Lock Fn Mode:** No need to press the FN key

2. **Unlock Fn Mode:** FN + ESC

- After pairing, the FN shortcut is locked in FN mode by default, and the locking FN is memorized when switching and shutting down.



## OTHER FN SHORTCUTS SWITCH

Shortcuts	Windows	Android	Mac / iOS
	Pause		
	Device Screen Brightness +		
	Device Screen Brightness -		
		Screen Lock	Screen Lock (iOS Only)

## DUAL-FUNCTION KEY

### Multi-System Layout

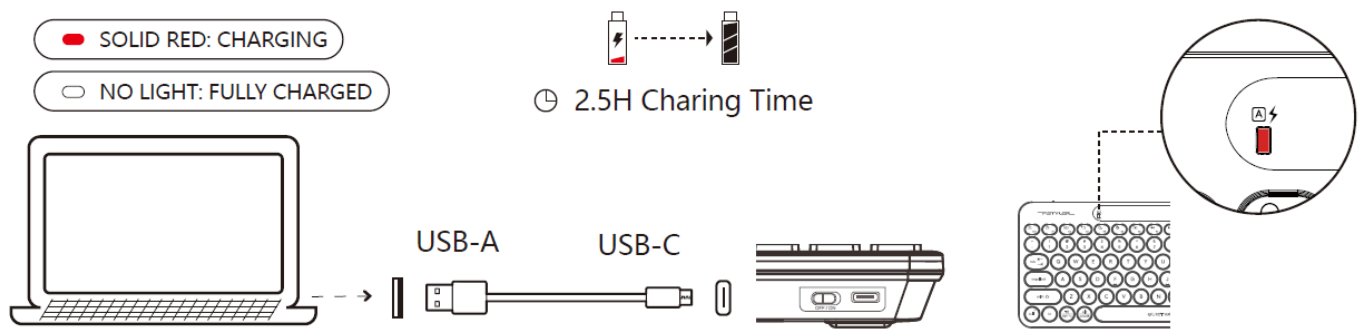
Keyboard Layout	Windows / Android (W / A)	Mac / iOS (ios&mac)
	<b>Switching Steps:</b> ① Choose iOS layout by pressing Fn+I. ② Choose MAC layout by pressing Fn+O ③ Choose Windows / Android layout by pressing Fn+P.	
	Ctrl	Control ^
	Start	Option
	Alt	Command
	Alt-Right	Command
	Ctrl-Right	Option

## CHARGING & INDICATOR

### Warning:

Limite charge with 5V (Voltage)





The flashing Red light indicates when the battery is below 10%.

## SPECIFICATIONS

- **Connection:** Bluetooth / 2.4GHz
- **Multi-Device:** Bluetooth x 2, 2.4G x 1
- **Operation Range:** 5~10 m
- **Report Rate:** 125 Hz
- **Character:** Laser Engraving
- **Includes:** Keyboard, Nano Receiver, Type-C Adaptor, USB Extension Cable, Type-C Charging Cable, User Manual
- **System Platform:** Windows/Mac/iOS/Chrome/Android/Harmony OS...

## Q & A

### • Question

How to switch layouts under different systems?

#### ◦ Answer

You can switch layout by pressing Fn + I / O / P under Windows Android Mac iOS.

### • Question

Can the layout be remembered?

#### ◦ Answer

The layout you used last time will be remembered.

### • Question

How many devices can be connected?

#### ◦ Answer

Interchange and connect up to 3 devices at the same time.

### • Question

Does the keyboard remember the connected device?

#### ◦ Answer

The device you connected to last time will be remembered.

### • Question

How can I know if the current device is connected or not?

#### ◦ Answer

- When you turn on your device, the device indicator will be solid. (disconnected: 5S, connected: 10S)

- **Question**

How to switch between connected Bluetooth devices 1-2?

- **Answer**

By pressing the Bluetooth individual buttons (   ) at the keyboard's top right corner.

## **WARNING STATEMENT**

The following actions may/will cause damages to the product.

1. To disassemble, bump, crush, or throw into the fire, you may cause irrefutable damages in the event of the lithium battery leakage.
2. Do not be exposed to strong sunlight.
3. Please obey all local laws when discarding the batteries, if possible please recycle them.  
Do not dispose of it as household garbage, it may cause a fire or an explosion.
4. Please try to avoid charging in an environment below 0°C.
5. Do not remove or replace the battery.
6. Please use the charging cable included in the package to charge the product.
7. Do not use any equipment with a voltage exceeding 5V for charging.



[www.a4tech.com](http://www.a4tech.com)



Scan for E-Manual

[www.a4tech.com](http://www.a4tech.com)

## **Documents / Resources**



## [A4 TECH FBK36C AS Bluetooth and 2.4G Keyboard](#) [pdf] User Guide

FBK36C AS, 70510-7913R, FBK36C AS Bluetooth and 2.4G Keyboard, FBK36C AS, Bluetooth and 2.4G Keyboard, 2.4G Keyboard, Keyboard

## References

- [User Manual](#)

### [Manuals+](#), [Privacy Policy](#)

This website is an independent publication and is neither affiliated with nor endorsed by any of the trademark owners. The "Bluetooth®" word mark and logos are registered trademarks owned by Bluetooth SIG, Inc. The "Wi-Fi®" word mark and logos are registered trademarks owned by the Wi-Fi Alliance. Any use of these marks on this website does not imply any affiliation with or endorsement.