

A2Z ozone CL2290F08 Flexible PCB Memory Touch Switch Dimmer User Guide

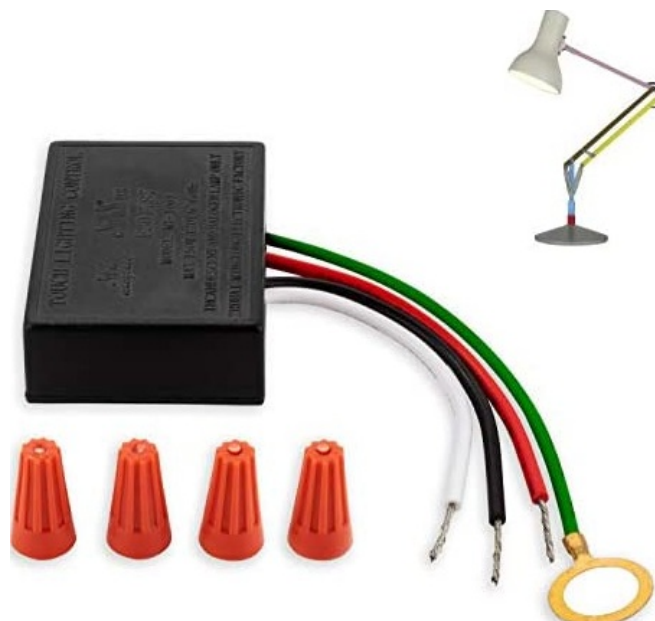
[Home](#) » [A2Z ozone](#) » A2Z ozone CL2290F08 Flexible PCB Memory Touch Switch Dimmer User Guide 

Contents

- [1 A2Z ozone CL2290F08 Flexible PCB Memory Touch Switch Dimmer](#)
- [2 Functions](#)
- [3 Operations](#)
- [4 Installation Steps](#)
- [5 Documents / Resources](#)
- [6 Related Posts](#)



A2Z ozone CL2290F08 Flexible PCB Memory Touch Switch Dimmer



Functions

The Flexible PCB Memory Touch Switch Dimmer CL2290F08 has the following functions:

- V+ – DC input positive
- VLED+ – DC input positive for LED strip
- LED- – DC input negative for LED strip
- DC input positive – DC input positive
- DC input negative – DC input negative
- Output to LED strip positive – Output to LED strip positive
- Output to LED strip negative – Output to LED strip negative

The device has a height of 9.8mm.

Operations

The device requires a DC input of 12V-24V (max. 4A).

Installation Steps

1. Cut the Spring 5mm above the PC Cover to ensure the height requirement of the spring is met. It is easy to cause a short circuit if the spring is too long with the PC cover installed.
2. Customize the function/program according to different needs, such as longer time for stay on, etc.
Note: Follow Steps 1-4 before proceeding with Steps 6-8.

5. Connect the device to a DC power source.
6. Connect the LED strip to the device's output.
7. Test the device to ensure proper operation.
8. Complete the installation process.

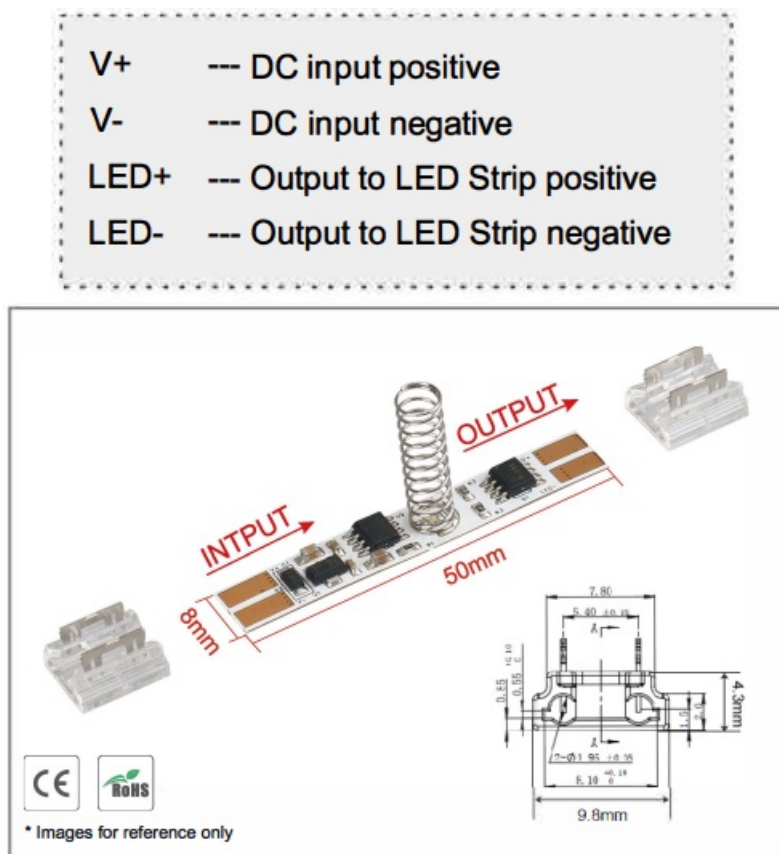
REV: A0

Product Usage Instructions

1. Cut the spring 5mm above the PC cover to ensure the height requirement of the spring is met. If the spring is too long, it can cause a short circuit when the PC cover is installed.
2. Customize the function/program according to different needs, such as longer time for stay on, etc.
3. Connect the device to a DC power source. The device requires a DC input of 12V-24V (max. 4A).
4. Connect the LED strip to the device's output. The device has 2 outputs for the LED strip: Output to LED strip positive and Output to LED strip negative.
5. Test the device to ensure proper operation.
6. Complete the installation process.

Functions

- Touch switch ON/OFF with dimming and memory.
- Input Voltage: 12V-24V DC.
- Input wire outer diameter: 1.9mm MAX
- Output Voltage: 12V-24V DC.
- LED Strip Width: 8mm
- Input Current: 3A.
- Load around 48W for 12V, and 96W for 24V.
- Dimension: 50*8mm.
- Height of Spring: 20mm.



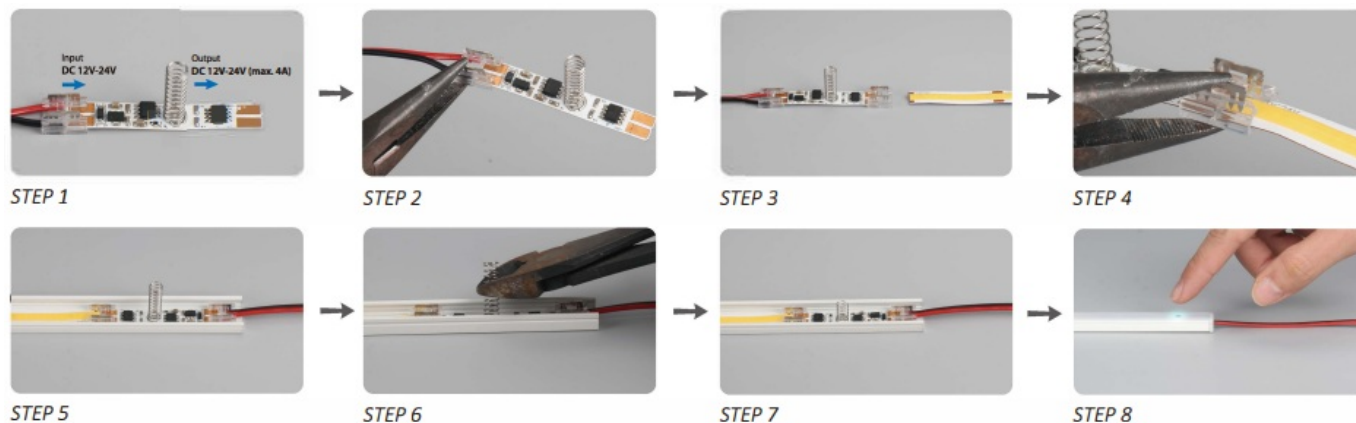
Operations

- Images far reference only
- The conductive spring needs to be covered by insulation material such as glass, plastic or ceramic material, thickness?3mm.
- With memory internal switch on/off and dimmer:
 1. Originally “OFF” when the power is connected. 9.8mm
 2. Quick touch (time is less than 550ms) can turn the light on and off. One touch to turn on; Another touch to turn off.

The lamp is 90% bright when it is on.
 3. Hold on touching (time is above 550ms) can adjust the brightness endlessly; It will reduce the brightness endlessly to the minimum in 3 seconds holding on when the light on.

4. Quick touch and hold on touching can be chosen anytime without any collision.
5. This sensor will memorize the status of the dimming in DC12V-24V.

Installation Steps



Note

1. Height Requirement of Spring : Cut the Spring 5mm above the PC Cover. It is easy to cause a short circuit if the spring is too long with the PC cover is installed.
2. The function/program can be customized, made different needs, such as longer time far stay on, etc.

Documents / Resources

	<p>A2Z ozone CL2290F08 Flexible PCB Memory Touch Switch Dimmer [pdf] User Guide FTD003- 2, CL2290F08, CL2290F08 Flexible PCB Memory Touch Switch Dimmer, CL2290F08 Touch Switch Dimmer, Flexible PCB Memory Touch Switch Dimmer, Memory Touch Switch Dimmer, Memory Switch Dimmer, Touch Switch Dimmer, Switch Dimmer, Dimmer</p>
--	--