

**A-Plus A02 Bedside Table**



# A-Plus A02 Bedside Table Instruction Manual

[Home](#) » [A-Plus](#) » A-Plus A02 Bedside Table Instruction Manual 

## Contents

- [1 A-Plus A02 Bedside Table](#)
- [2 PARTS LIST](#)
- [3 Specifications](#)
- [4 Assembly Instructions](#)
- [5 FAQ](#)
  - [5.1 Documents / Resources](#)
    - [5.1.1 References](#)

# A-Plus

## A-Plus A02 Bedside Table



PARTS LIST

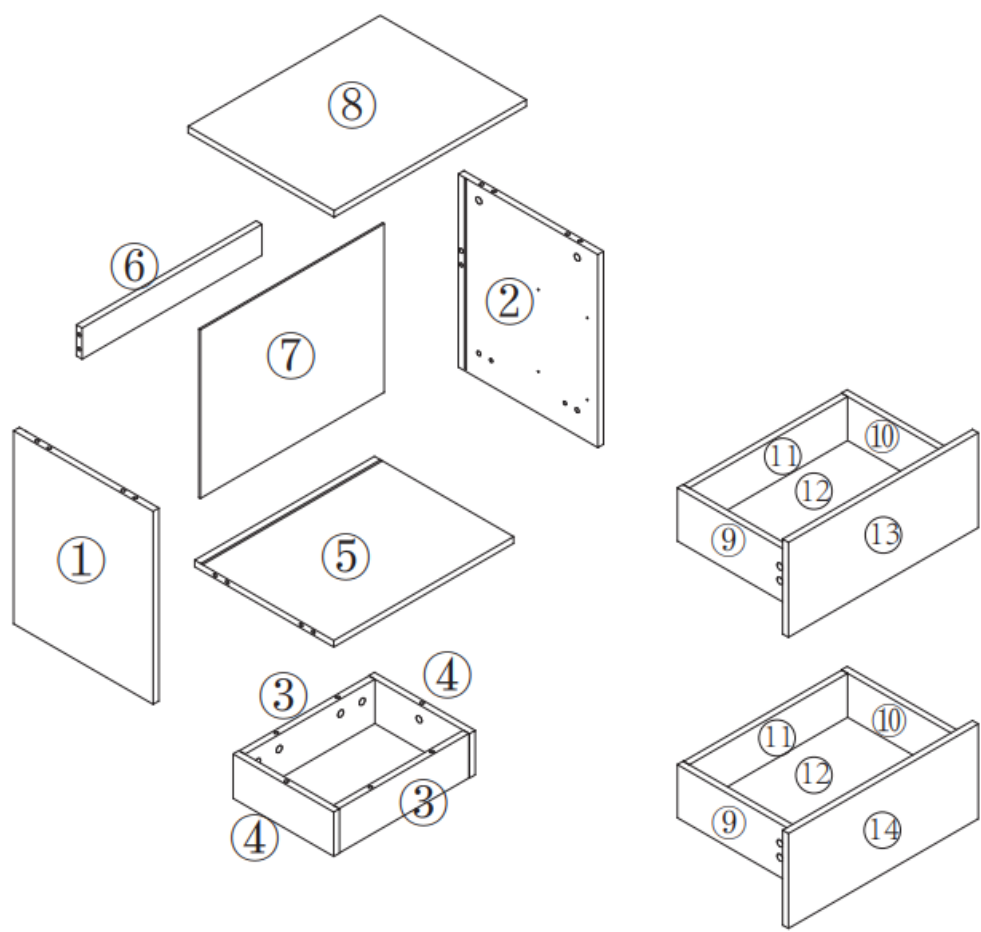
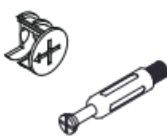


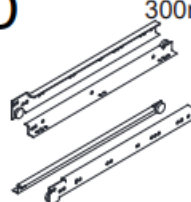

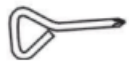
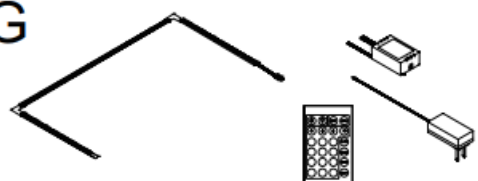


Illustration of various parts labeled with numbers 1 through 14, along with a listing of hardware such as screws and tools required for assembly.

Specifications

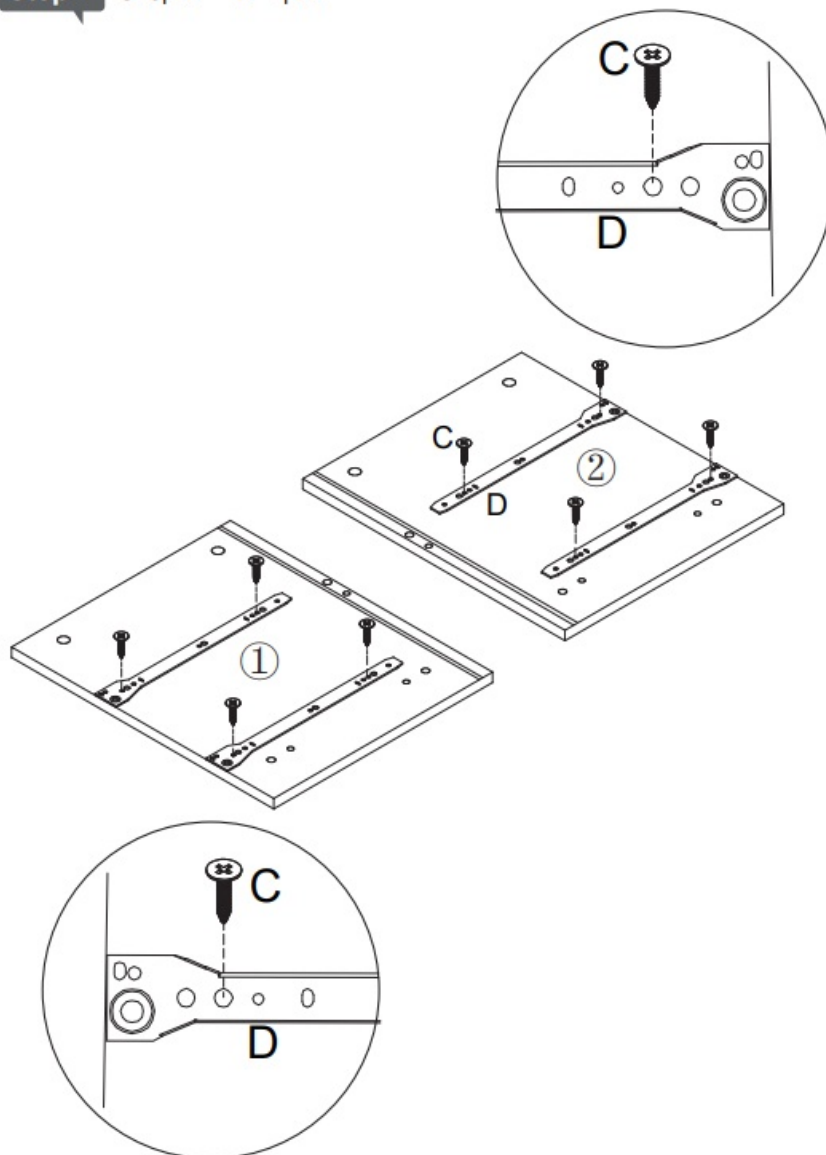
Hardware	Quantity	Size
A (Screw)	36+2 sets	
B (Screw)	14+2 pcs	φ8*30mm
C (Screw)	16+2 pcs	φ3.5*14mm
D (Dowel)	2 sets	300mm
E (Cap)	36+2 pcs	
F (Tool)	1 pcs	
G (Bracket)	1 set	

<b>A</b>  36+2 set	<b>B</b> $\varnothing 8 \times 30\text{mm}$  14+2 pcs	<b>C</b> $\varnothing 3.5 \times 14\text{mm}$  16+2 pcs	<b>D</b> 300mm  2 set
<b>E</b>  36+2 pcs	<b>F</b>  1 pcs	<b>G</b>  1 set	

## Assembly Instructions

### Step 1

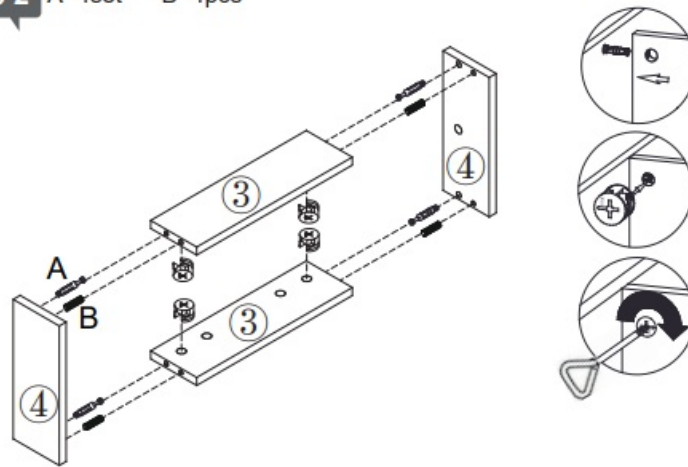
**Step 1**    C=8pcs    D=4pcs



Attach part 2 to part 1 using 8 C screws and 4 D dowels.

## Step 2

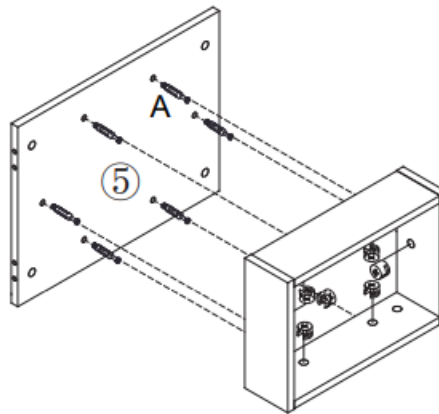
**Step 2** A=4set B=4pcs



Connect parts 3 and 4 to part 2 using 4 A screws and 4 B screws.

## Step 3

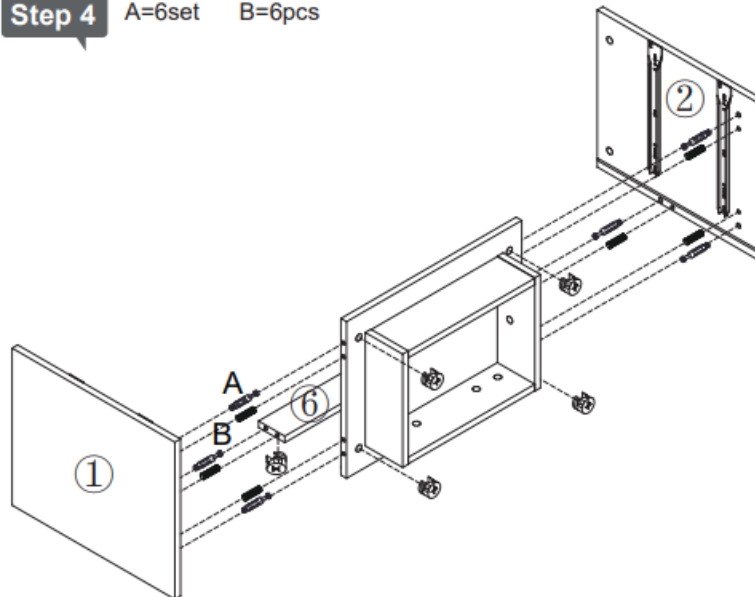
**Step 3** A=6set



Secure part 5 to the assembly using 6 A screws.

## Step 4

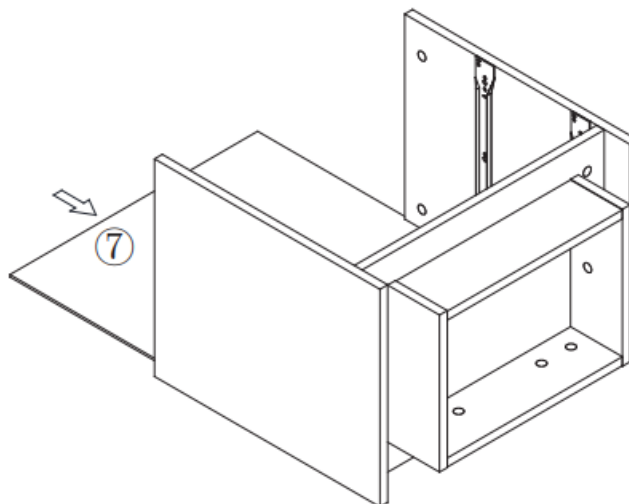
**Step 4** A=6set B=6pcs



Attach part 6 to part 1 using 6 A screws and 6 B screws.

**Step 5**

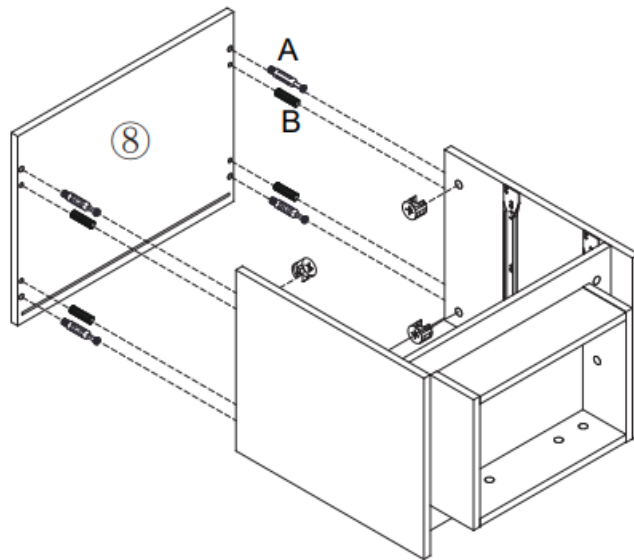
**Step 5**



Place part 7 on the top of the assembly.

**Step 6**

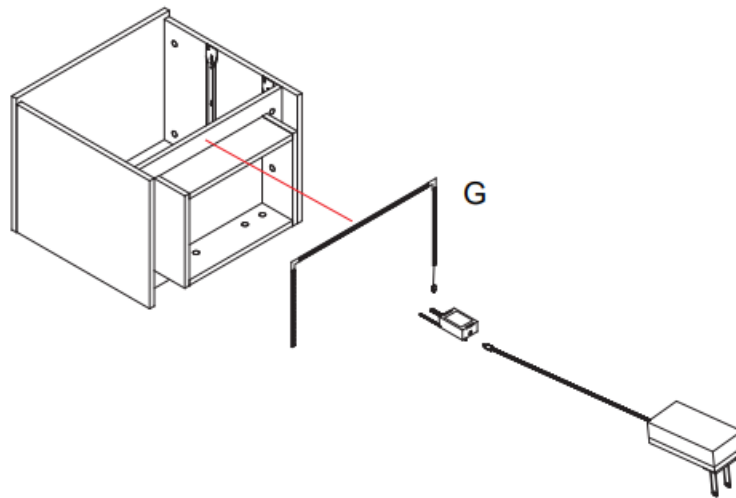
**Step 6** A=4set B=4pcs



Secure part 8 to the assembly using 4 A screws and 4 B screws.

**Step 7**

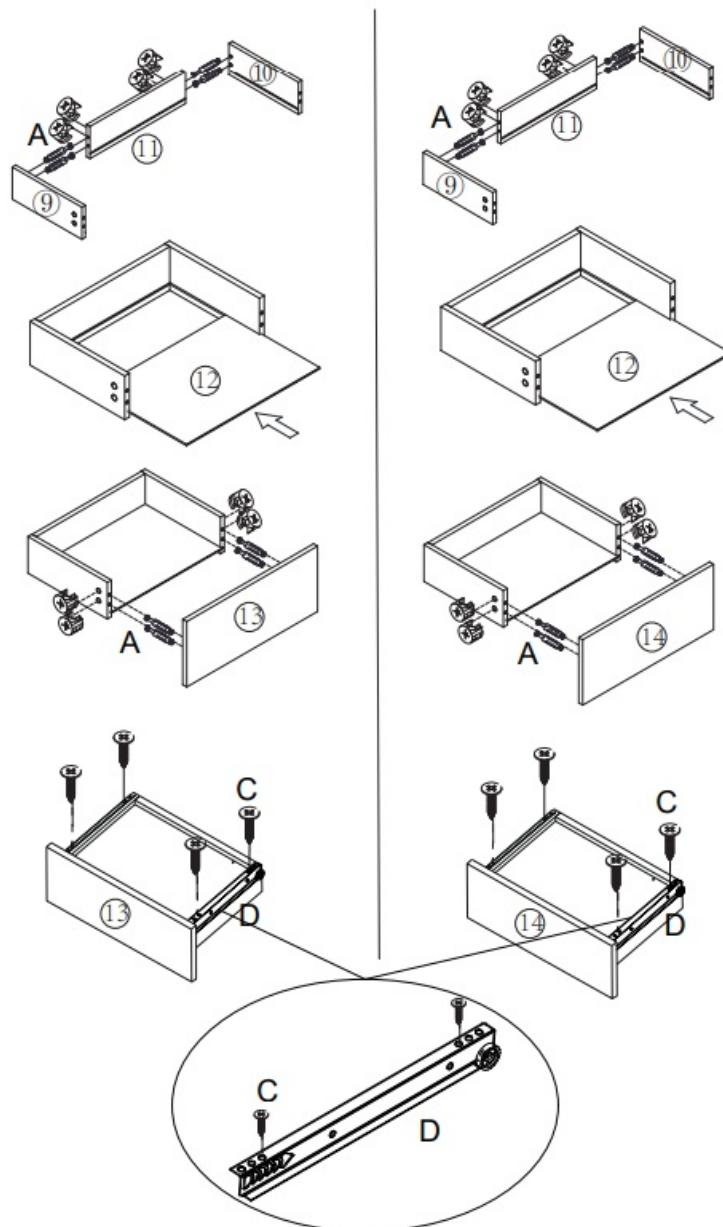
**Step 7** G=1set



Install G bracket to the underside of the assembly.

**Step 8**

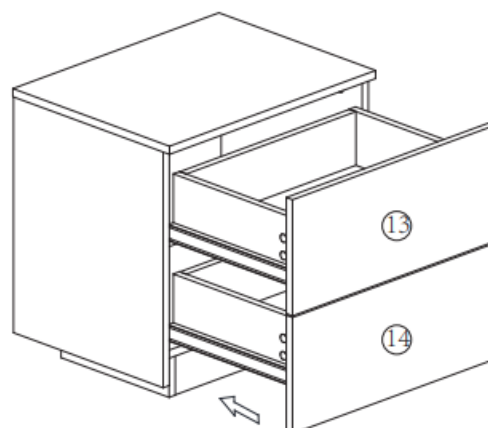
**Step 8** A=16set C=8pcs D=4pcs



Assemble drawer components 9, 10, 11, 12, 13, and 14 using 16 A screws, 8 C screws, and 4 D dowels.

**Step 9**

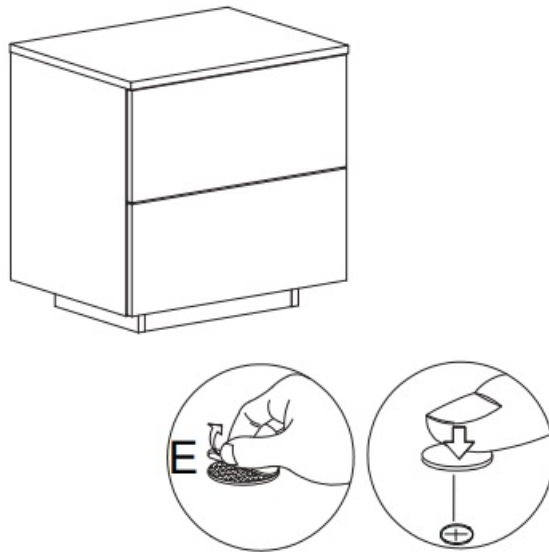
**Step 9**



Insert drawers 13 and 14 into the assembly.

## Step 10

**Step 10** E=36pcs




Attach 36 E caps onto exposed screws for a finished appearance.

---

## FAQ

- **What should I do if I have missing or damaged parts?**
  - Contact customer service at [info@i-aplus.com](mailto:info@i-aplus.com) with details of the missing or damaged parts for assistance.
- **Can I use power tools for assembly?**
  - It's recommended to use the provided manual tools to avoid damaging the parts. If using power tools, ensure they are set to a low torque setting.
- **Where can I find the instruction manual online?**
  - The instruction manual can typically be found on the manufacturer's website or by contacting customer service.
- **What is the best way to ensure the stability of the assembled furniture?**
  - Make sure all screws and dowels are tightly secured and periodically check them to ensure they remain tight over time.



<div>INSTRUCTION MANUAL</div> <div></div> <div>Customer service email: <a href="mailto:info@i-plus.com">info@i-plus.com</a></div>	<div><a href="#">A-Plus A02 Bedside Table</a> [pdf] Instruction Manual</div> <div>A02 Bedside Table, A02, Bedside Table</div>
--	---

References

- [User Manual](#)

Manuals+, Privacy Policy

This website is an independent publication and is neither affiliated with nor endorsed by any of the trademark owners. The "Bluetooth®" word mark and logos are registered trademarks owned by Bluetooth SIG, Inc. The "Wi-Fi®" word mark and logos are registered trademarks owned by the Wi-Fi Alliance. Any use of these marks on this website does not imply any affiliation with or endorsement.