



# A-iPower SUA7000C Portable Generator User Guide

[Home](#) » [A-iPOWER](#) » A-iPower SUA7000C Portable Generator User Guide 

## Contents

- [1 A-iPower SUA7000C Portable Generator](#)
- [2 Product Information](#)
- [3 Product Usage](#)
- [4 Included Items](#)
- [5 Install the wheel kit](#)
- [6 Start Generator](#)
- [7 Shutdown and Storage](#)
- [8 Documents / Resources](#)
  - [8.1 References](#)
- [9 Related Posts](#)



**A-iPower SUA7000C Portable Generator**



## **SUA7000C Generator Quick Start Guide**

### **Product Information**

The SUA7000C Generator is a portable power generator that can provide up to 7000 watts of power. The generator is equipped with a wheel kit that allows for easy movement, and it also features a shock-absorbing seat (cushion) for added protection. The generator should only be used outdoors, as the exhaust contains carbon monoxide which can be deadly if used indoors.

### **Product Usage**

Before using the generator, it is important to read the operator's manual thoroughly to reduce the risk of injury or death.

The following instructions provide a quick reference guide for starting and using the generator:

1. Install the wheel kit by referring to the manual.
2. Adjust the shock-absorbing seat by loosening the lock nut and adjusting the seat to have a 3mm gap between the top of the seat and the bottom of the motor bracket. Re-tighten the lock nut.
3. Make sure to use the generator outdoors and far away from windows, doors, and vents.
4. Turn the fuel valve located under the tank to the ON position.
5. Move the choke lever located on the engine to the RUN position.
6. Plug in items to be powered using only grounded extension cords.
7. Start the generator by pulling the cord starter.
8. Run the generator at no load for 2 minutes and then turn the engine switch located on the control panel to the OFF position.

If you have any questions or concerns about using the generator, please refer to the operator's manual or contact customer support at 1-855-888-3598 or via email at [support@a-ipower.com](mailto:support@a-ipower.com).

Unpack Generator: Remove generator, accessories, inserts and Literature from carton. If any item is missing or damaged, contact our product service department at 1-855-888-3598.

### **Included Items**

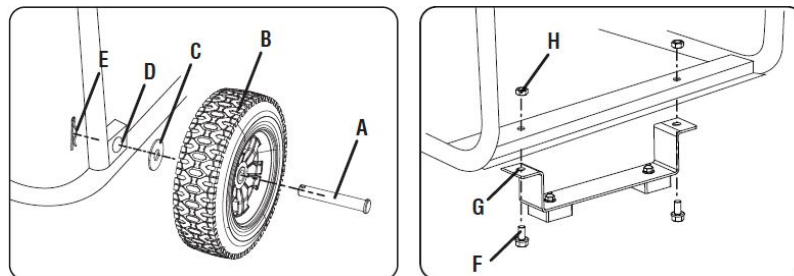


## WARNING

This Quick Reference Guide is not a substitute for reading the operator's manual. To reduce the risk of injury or death, users must read and understand the operator's manual before using this product. All pages reference the operator's manual.

## Install the wheel kit

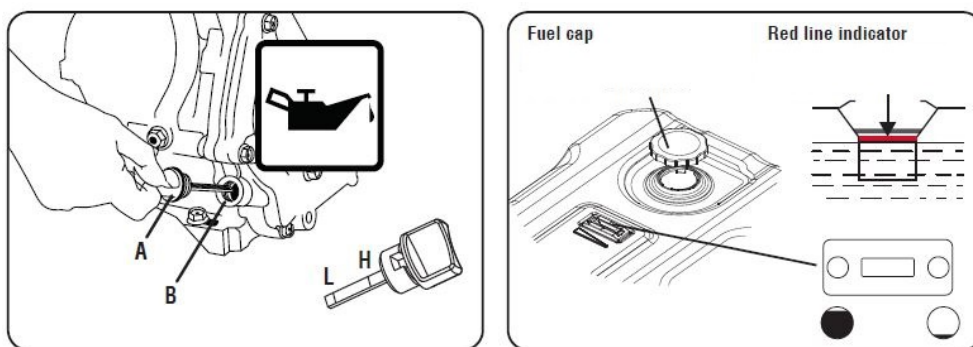
Slide the axle pin(A) through the wheel(B), flat washer(C), and mount point on the frame(D). Secure them with a cotter pin(E).



Attach the support leg(G) to the generator frame with flange bolt(F)(M8X16) and flange lock nut(H)(M8).

## Add Lubricant and Fuel

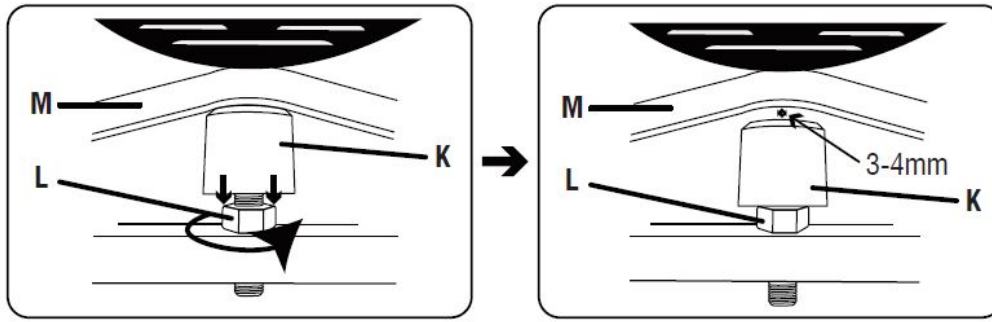
Use a funnel to pour provided engine oil into the engine. Fill to the upper mark of the oil dipstick H.



Use clean/fresh regular UNLEADED gasoline with a minimum of 87 octane.

## Adjust Shock-absorbing Seat

Before operating the generator, the shock-absorbing seat (cushion) must be adjusted for proper clearance. Loosen the lock nut and adjust the shock-absorbing seat so there is a 3mm gap between the top of the seat and the bottom of the motor bracket. Re-tighten the lock nut.



## Start Generator

Move the generator outside to a flat, level surface, away from doors, windows, and vents.

### **DANGER**

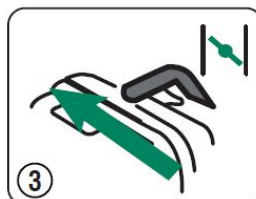
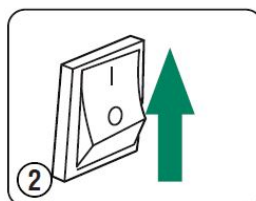
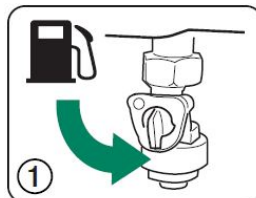
Using a generator indoors **CAN KILL YOU IN MINUTES**. Generator exhaust contains carbon monoxide. This is a poison you cannot see or smell.

- NEVER use it inside a home or garage, **EVEN IF** doors and windows are open.
- Only use **OUTSIDE** and far away from windows, doors, and vents.
- Avoid other generator hazards. **READ THE MANUAL BEFORE USE**

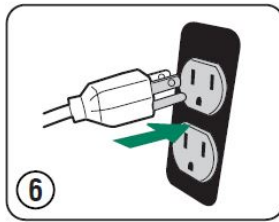
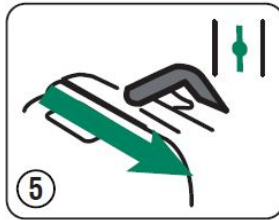
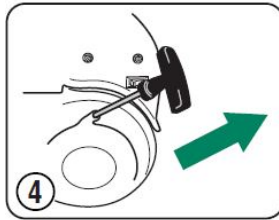
### **WARNING**

Do not overload the generator or electrical cords. Consult the operation manual.

1. Turn the fuel valve under the tank to the ON position
2. Turn the engine switch located on the control panel to the ON position
3. Move the choke lever located on the engine to the START position

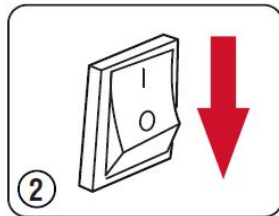
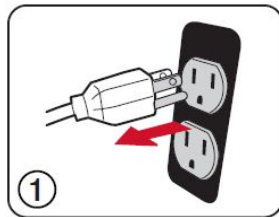


4. Pull cord starter to start engine
5. Move choke lever to RUN Position
6. Plug in items to be powered, using only grounded extension cords

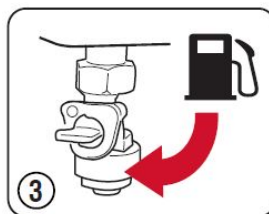


## Shutdown and Storage

1. Remove any load from the generator




2. Run the generator at no load for 2 minutes and then turn engine switch to OFF position
3. Turn fuel valve to OFF(O)position



If generator is to be stored for longer than 30 days, refer to The operator's manual for further Instruction.

Questions? Call 1-855-888-3598 or email [support@a-ipower.com](mailto:support@a-ipower.com)  
Tiene preguntas? Llame al 1-855-888-3598 o escriba a [support@a-ipower.com](mailto:support@a-ipower.com)

## Documents / Resources

|  |   |
|--|---|
|  | <p><a href="#">A-iPower SUA7000C Portable Generator</a> [pdf] User Guide<br/>SUA7000C, SUA7000C Portable Generator, Portable Generator, Generator</p> |
|--|---|

References

-  [Domain Names and Web Hosting by IPOW](#)