

A-IPOWER GXS5000C Portable Generator



A-IPOWER GXS5000C Portable Generator User Guide

[Home](#) » [A-iPOWER](#) » A-IPOWER GXS5000C Portable Generator User Guide 

Contents

- [1 A-IPOWER GXS5000C Portable Generator](#)
- [2 Product Information](#)
- [3 Unpack Generator](#)
- [4 Installation Instructions](#)
- [5 Shutdown And Storage](#)
- [6 Contact](#)
- [7 Documents / Resources](#)
 - [7.1 References](#)



A-IPOWER GXS5000C Portable Generator



Product Information

Specifications

- **Model:** GXS5000C
- Quick Start Guide Included
- Wheel Kit Installation Required
- **Fuel Type:** Gasoline
- Red Line Indicator for Safety
- Shock-absorbing Seat for Motor Bracket Clearance

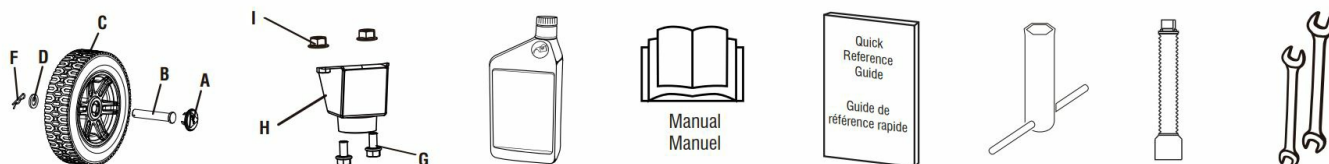
Frequently Asked Questions

- **Q:** Can I use the generator indoors?
 - **A:** No, using the generator indoors can be extremely dangerous as the exhaust contains carbon monoxide. Always operate the generator outdoors in a well-ventilated area.
- **Q:** What type of fuel should I use?
 - **A:** Use gasoline as the fuel for this generator. Make sure to follow the fueling instructions provided in the manual.
- **Q:** How do I know if I have overloaded the generator?
 - **A:** Refer to the operation manual to understand the load limits of the generator and avoid overloading it with electrical cords or appliances.

Unpack Generator

- Remove generator, accessories, inserts and Literature from carton.
- If any item is missing or damaged, contact our product service department at 855-888-3598.

Included Items

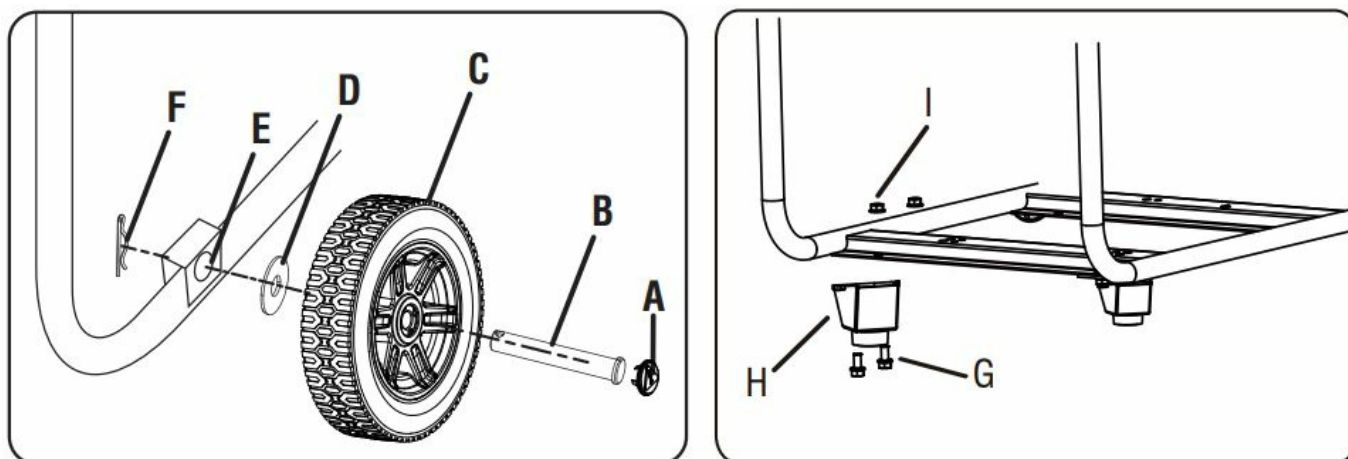


WARNING

- This Quick Reference Guide is not substitute for reading the operator's manual.
- To reduce the risk of injury or death, user must read and understand the operator's manual before using this product. All pages references to the operator's manual.

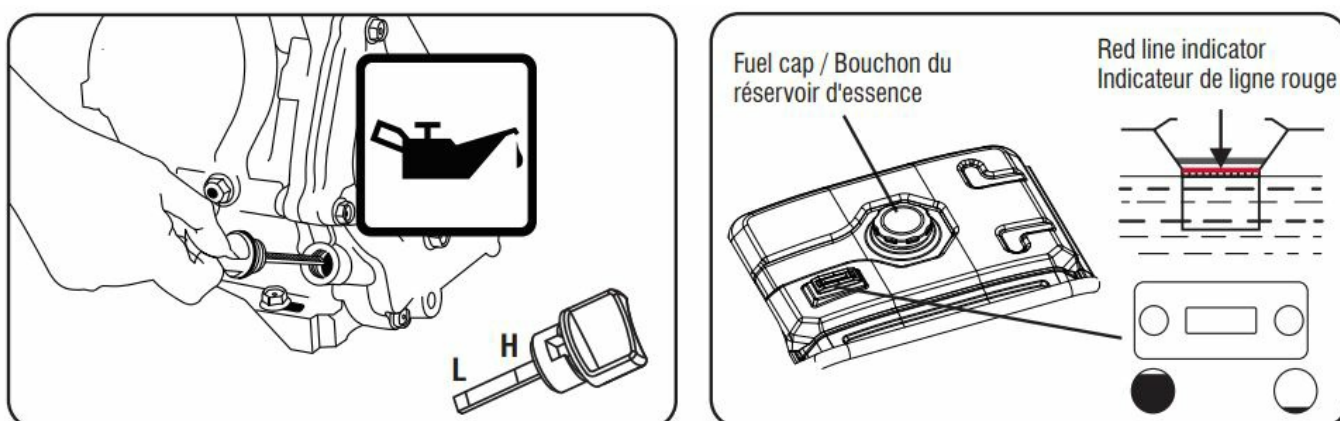
Installation Instructions

Install the wheel kit



- Slide the axle pin(B) through the wheel(C), flat washer(D) and mount point on the frame(E). Secure them with cotter pin(F), then assemble Cap(A) to Wheel(C).
- Attach the support leg(H) to the generator frame with flange bolt(G)(M8X16) and flange lock nut(I)(M8).

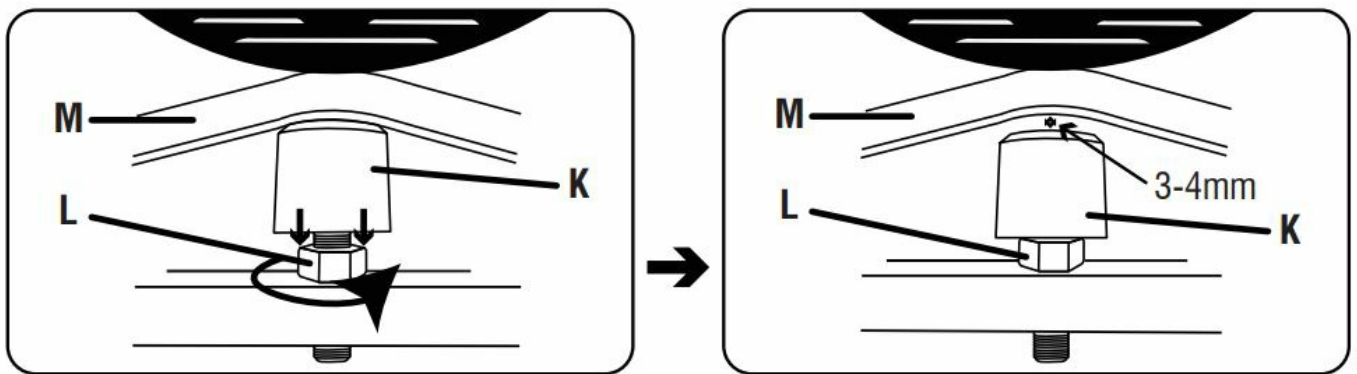
Add Lubricant and Fuel



- Use a funnel to pour provided engine oil into engine. Fill to the upper mark of the oil dipstick H.

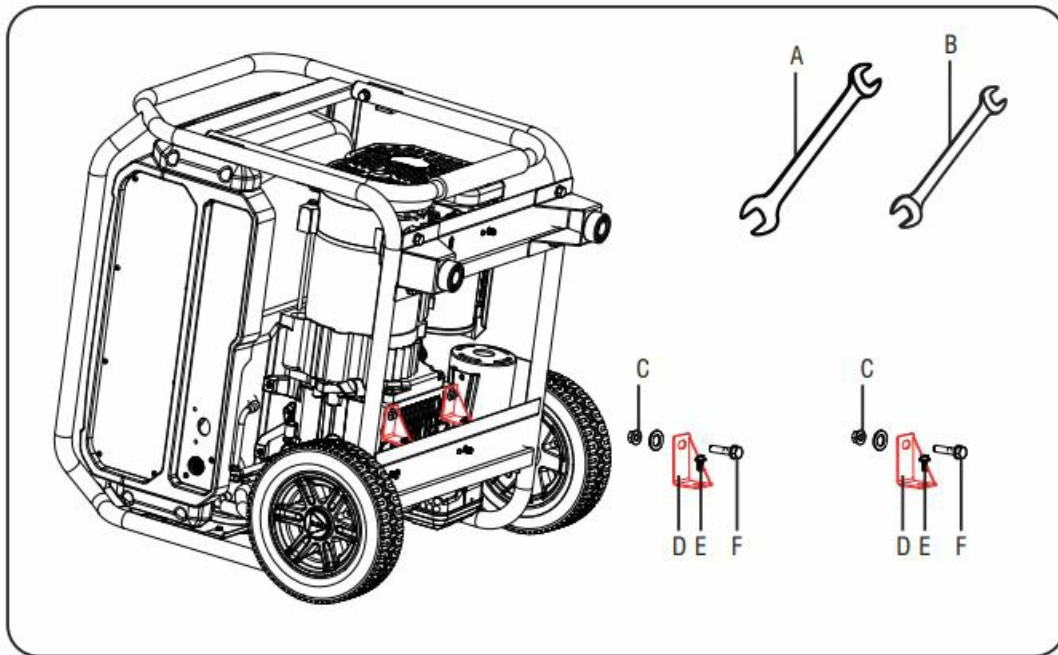
- Use clean / fresh regular UNLEADED gasoline with a minimum 87 octane.

Adjust Shock-absorbing Seat



- Before operating the generator, the shock-absorbing seat (cushion) must be adjusted for proper clearance.
- Loosen the lock nut and adjust the shock-absorbing seat so there is a 3mm gap between the top of the seat and the bottom of the motor bracket. Re-tighten the lock nut.

Removal of Shipping Support Brackets



- Remove the bolt (E) with double open wrench (8mm-10mm) (B).
- Remove the bolt (F) and nut (C) with double open wrench (13mm-15mm) (A) and double open wrench (8mm-10mm) (B).

CAUTION

- Failure to remove the support brackets, can result in damage to your generator, possible personal injury and void your warranty.

Start Generator

- Move generator outside to a flat, level surface, away from doors, windows and vents.

DANGER

Using a generator indoors can kill you in minutes. Generator exhaust contains carbon monoxide. This is a poison you cannot see or smell.



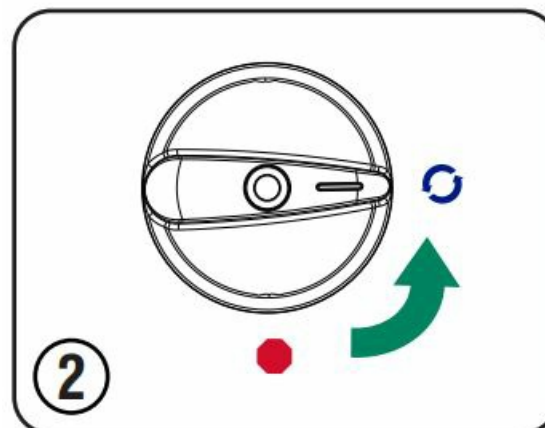
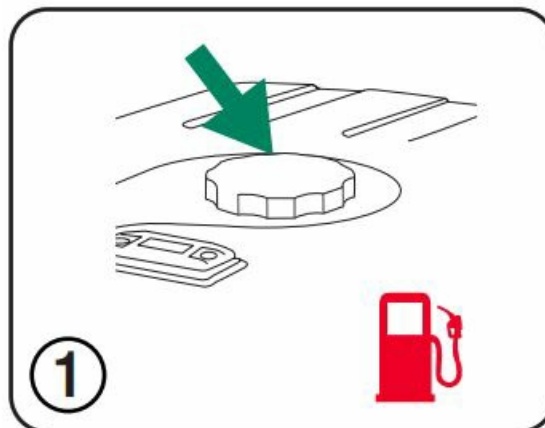
- Never use inside a home or garage, even if doors and windows are open.




- Only use outside and far away from windows, doors and vents.

Avoid other generator hazards. Read manual before use.

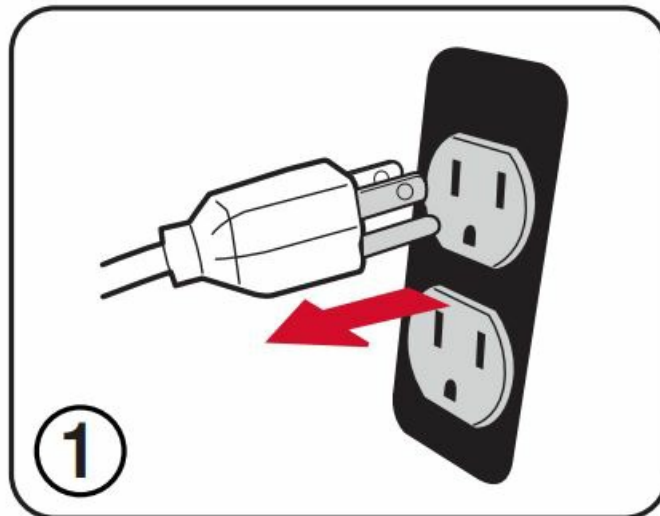
WARNING: Do not overload generator or electrical cords. Consult operation manual.



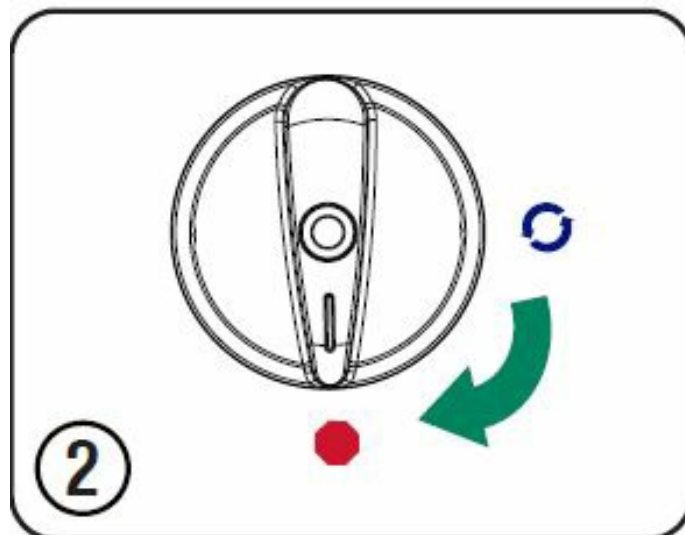
- Add gasoline to the fuel tank.


- Turn the starting dial switch to the  position.

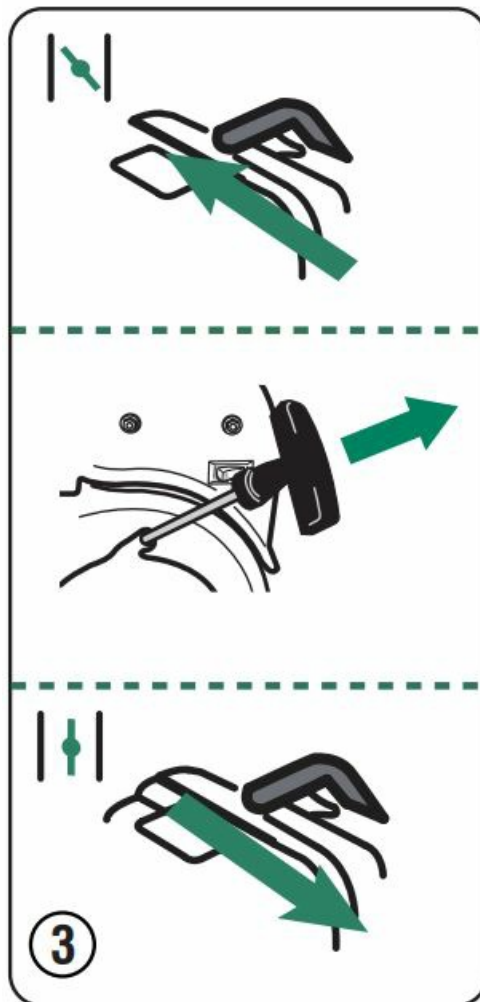
Shutdown And Storage



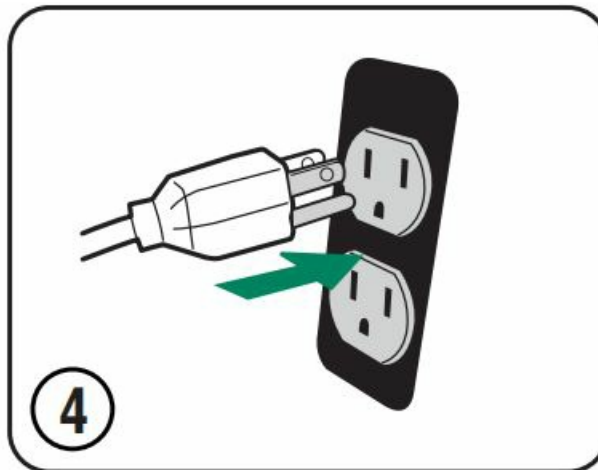
1. Remove any load from the generator.



2. Turn the starting dial switch to the  position.
 - Start



- Move the choke lever to the “START” position.
 - Pull recoil starter slowly until resistance is felt, then pull rapidly.
3. Move the choke lever to the “RUN” position.



4. Plug in items to be powered, using only grounded extension cords.


If generator is to be stored for longer than 30 days, refer to the operator’s manual for further Instruction.

Contact

Questions?

- Call: 855-888-3598
- email: support@a-ipower.com

Documents / Resources

	<p>A-IPOWER GX5000C Portable Generator [pdf] User Guide GX5000C Portable Generator, GX5000C, Portable Generator, Generator</p>
---	--

References

- [User Manual](#)

[Manuals+.](#) [Privacy Policy](#)

This website is an independent publication and is neither affiliated with nor endorsed by any of the trademark owners. The "Bluetooth®" word mark and logos are registered trademarks owned by Bluetooth SIG, Inc. The "Wi-Fi®" word mark and logos are registered trademarks owned by the Wi-Fi Alliance. Any use of these marks on this website does not imply any affiliation with or endorsement.