



## A D GXA-27 Bluetooth Communication Option Instruction Manual

[Home](#) » [A D](#) » A D GXA-27 Bluetooth Communication Option Instruction Manual 

### A D GXA-27 Bluetooth Communication Option



## Contents

- 1 About This Manual
- 2 Introduction
- 3 Support Models
- 4 Connectable Device
- 5 Installation Procedure
- 6 DIP Switch
- 7 HID Function (HID Over GATT Profile)
- 8 Precautions For Use
- 9 Wireless Communication
- 10 Compliance
- 11 IC
- 12 Documents / Resources
  - 12.1 References
- 13 Related Posts

## About This Manual

- The Bluetooth® word mark and logos are registered trademarks owned by Bluetooth SIG, Inc. and any use of such marks by A&D is under license.
- iOS is the name of the operating system of Apple Inc. iOS is a trademark or registered trademark of Cisco in the U.S. and other countries and is used under license.
- Android™, Google Play and the Google Play logo are trademarks of Google LLC.
- Microsoft®, Windows®, Word®, and Excel® are trademarks of the Microsoft group of companies

## Introduction

GXA-27 / GXM-27 / GXL-27 is a Bluetooth communication option. By pairing specific product, PC, tablet or smartphone equipped with Bluetooth function, you can communicate with the balance. Dust and waterproof balances can communicate with Bluetooth device by using GXA-27 / GXM-27 / GXL-27 maintaining its performance.

## Support Models

GXA-27	GX-A / GF-A /GX-AWP / HR-AZ / HR-A / FZ / FX / FZ-WP / FX-WP / FZ-i / FX-i / FZ-iWP / F X-iWP
GXM-27	GX-M / GF-M
GXL-27	GX-L / GF-L

## Connectable Device

1. Smartphone / Tablet / PC with Bluetooth via HID : Refer to “6. HID function (HID Over GATT Profile)”.
2. Smartphone / Tablet via App : Install A&D WeiV® (iOS / Android OS)
3. AD8931 : Wireless Remote Display
4. AD8541-PC : Wireless Communication Interface for Windows PC (Connect to USB port of computer)

**Note:** Refer to the A&D website for details.

## Installation Procedure

**Note:** Before installing the option board, disconnect the AC adapter from the balance.

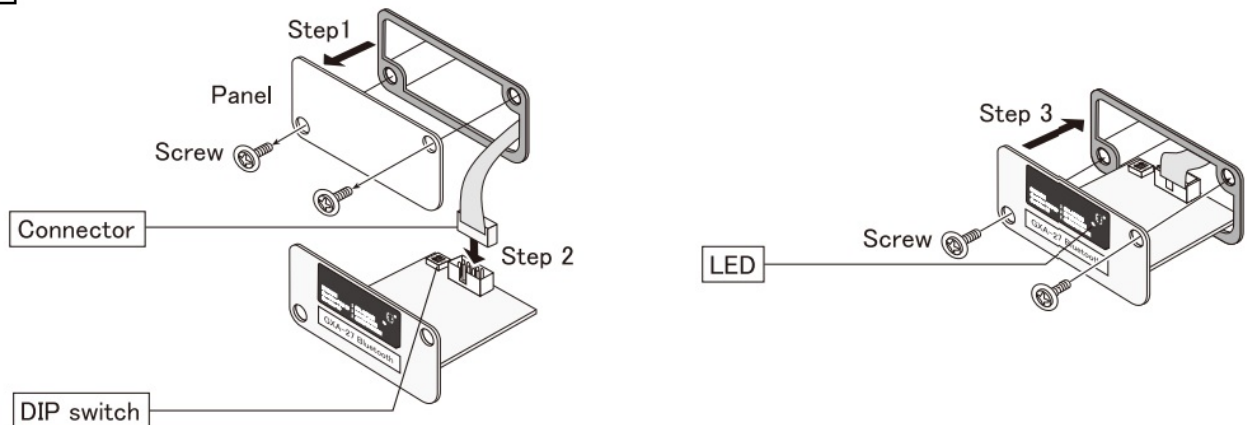
### GXA-27

**Step 1** Remove the two screw from the panel. Pull gently the cable and option board from the balance.

**Step 2** Peel off the connector that is affixed to the panel with double-sided tape and insert it into the socket of the option board.

**Step 3** Attach the option board to the balance. Fix the option panel with two screws removed in step1.

#### GXA-27



### GXM-27 / GXL-27

**Step 1** Remove the two screw from the panel and pull out RS-232C / USB board from the balance.

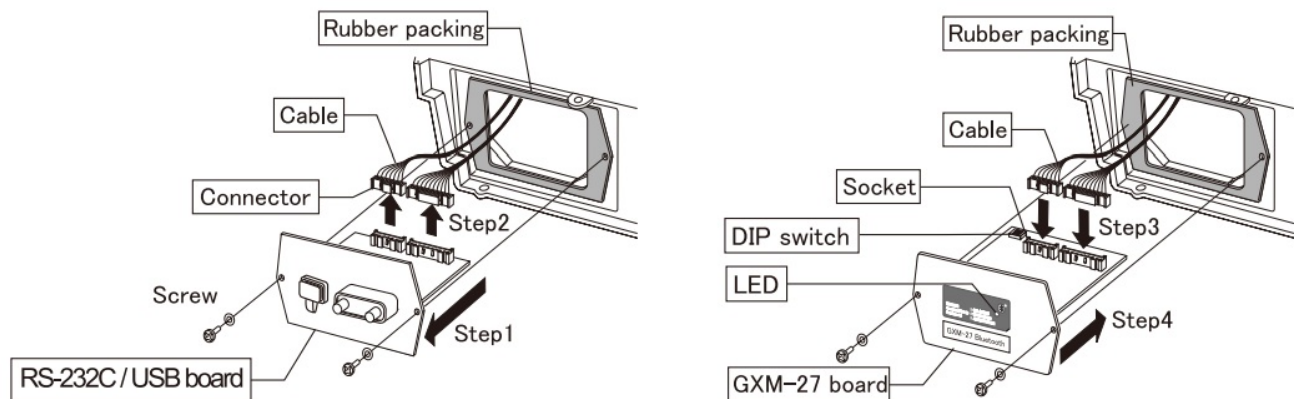
**Step 2** Disconnect two cables gently from the RS-232C / USB board.

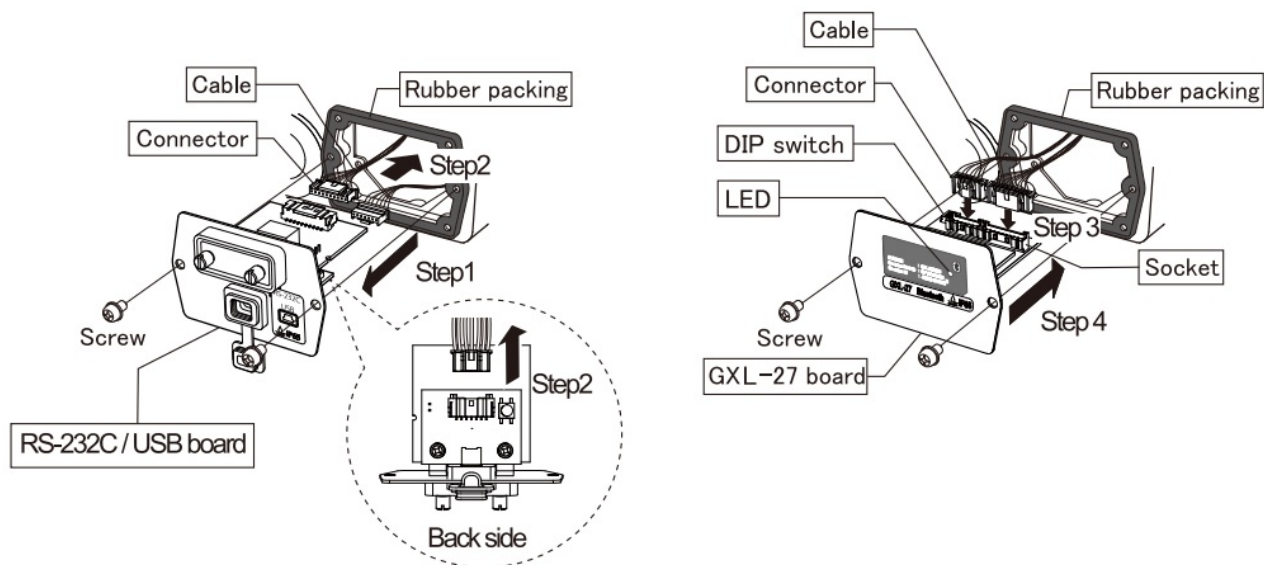
**Step 3** Connect the two cables into the sockets of the GXM-27 / GXL-27 board.

**Step 4** Insert the rubber packing and plug the GXM-27 / GXL-27 into the balance.

Fix the option panel with two screws removed in step1.

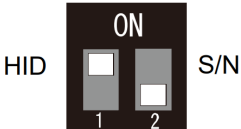
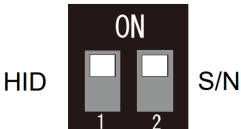
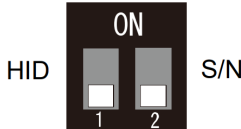
#### GXM-27





## DIP Switch

- GXA-27 / GXM-27 / GXL-27 has two dip switches. DIP switch No.1 sets connection method with Bluetooth device and dip switch No.2 set giving or not giving a serial number (S/N) to the weighing value. Refer to the following table, adjusting the settings of the switch 1 and 2 depending on your application.

Case		DIP switch		Output Data
		No.1	No.2	
		HID	S/N	
1	Keyboard input No S/N (Factory Setting)	ON	OFF	Only numerical data (No header, no +sign and no unit)  Example 1)      1.23 Example 2)    -4.56 ↑ Data
				
2	Keyboard input With S/N	ON	ON	Add S/N before numerical data (Same as case 1 if the balance has no S/N set ting)  Example 1)    12345678      1.23 Example 2)    901234567    -4.56 ↑            ↑            ↑ S/N      Tab      Data
				
3	Two-way communication *	OFF	OFF	Connect to AD8931 or AD8541-PC or A&D W eiV
				

\* See the AD8931 or AD8541-PC or A&D WeiV manual how to set the communication functions.

## **HID Function (HID Over GATT Profile)**

### **About HID function**

- By turning on DIP switch No.1, you can connect to a Smartphone, tablet, or PC with Bluetooth and use a general purpose text application or spreadsheet software.
- The output data has no header (ST, WT, etc.), + sign and unit (g, kg, etc.).
- Set the keyboard language of device to English.
- By turning on DIP switch No.2, the output data has serial number (S/N) of balance. Refer to 3- DIP switch, Case 2.

### **Pairing**

- Turn on the Bluetooth function of connection device and power on the balance. Select the "A&D\_HID" device and pair. S/N may have been added after "A&D\_HID".
- You will not be able to connect if more than 30 seconds have passed without pairing after selecting the device. In that case, power off the balance and try again.

### **Precautions For Use**

- Refer to the instruction manual of the connection device for the pairing.
- The LED lights up when the wireless communication connection is completed.
- It will connect automatically when the paired device is nearby. When connecting to other device, turn off the unused devices or unpairing GX-A-27 / GX-M-27 / GX-L-27 and Bluetooth device.
- If you can't communicate with the balance, check the connection of the balance and the GX-A-27 / GX-M-27 / GX-L-27, settings of the balance, pairing and connected device status.

### **Wireless Communication**

- Bluetooth devices is EC2832 (KAGA ELECTRONICS Co.,Ltd.) Bluetooth 5.0 (Bluetooth Low Energy)
- The effective range communication is 10 m or less in an unobstructed space.  
If there is an obstacle such as a wall, the range of communication will be shorter.
- Interference may be caused near the following devices that use the 2.4 GHz frequency band, which is the same as for Bluetooth. Therefore, this device is not suited for uses that require reliability.
- Wireless LAN
- Bluetooth devices (such as mobile phones)
- Home appliances such as microwave ovens

### **Compliance**

#### **Compliance with FCC Rules**

This device contains transmitter module FCC ID: 2A6NFEC2832

This device complies with part 15 of the FCC Rules. Operation is subject to the following two conditions:

(1) This device may not cause harmful interference, and (2) this device must accept any interference received, including interference that may cause undesired operation. (FCC = Federal Communications Commission in the U.S.A.)

**FCC CAUTION:** Changes or modifications not expressly approved by the party responsible for compliance could void the user's authority to operate the equipment. The antenna used for this transmitter must not be co-located or operating in conjunction with any other antenna or transmitter. This product is certified as type of the portable device with FCC Rules.

To maintain compliance with RF Exposure requirement, please use within specification of this product.

## IC

### IC RADIATION EXPOSURE STATEMENT FOR CANADA

This device contains transmitter module IC : 28568-EC2832

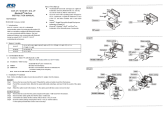
This device complies with Innovation, Science and Economic Development Canada license-exempt RSS standards.

Operation is subject to the following two conditions: (1) This device may not cause interference. (2) This device must accept any interference, including interference that may cause undesired operation of the device.



---

## Documents / Resources

	<p><a href="#">A D GXA-27 Bluetooth Communication Option</a> [pdf] Instruction Manual GXA-27, GXA-27 Bluetooth Communication Option, Bluetooth Communication Option, Communication Option, Option</p>
---	---

## References

- [User Manual](#)

[Manuals+](#), [Privacy Policy](#)

This website is an independent publication and is neither affiliated with nor endorsed by any of the trademark owners. The "Bluetooth®" word mark and logos are registered trademarks owned by Bluetooth SIG, Inc. The "Wi-Fi®" word mark and logos are registered trademarks owned by the Wi-Fi Alliance. Any use of these marks on this website does not imply any affiliation with or endorsement.