



Yi Q6 Security Cameras Wireless App Instructions

[Home](#) » [YI](#) » Yi Q6 Security Cameras Wireless App Instructions 

Contents

- [1 Yi Q6 Security Cameras Wireless App](#)
- [2 Product Information](#)
- [3 Product Usage Instructions](#)
- [4 Download Yi IoT app](#)
- [5 Sign up and log in](#)
- [6 How to add a camera](#)
- [7 How to use the app](#)
- [8 Cloud storage](#)
- [9 Common problem](#)
- [10 Special statement](#)
- [11 Documents / Resources](#)
 - [11.1 References](#)
- [12 Related Posts](#)



Yi Q6 Security Cameras Wireless App



Product Information

Specifications

- Camera Compatibility: Yi IoT app
- Wireless Band: 2.4GHz only (5GHz not supported)
- Storage Capacity: Supports F32 format with a maximum capacity of 64GB
- Cloud Storage: Available with a subscription
- Mobile App and Firmware Updates: Supported
- RF Exposure: Complies with FCC radiation exposure limits

Product Usage Instructions

Download Yi IoT app

To use the smart camera, you need to download the Yi IoT app. Follow the steps below:

1. Scan the QR code below or search for “Yi IoT” in Google Play or App Store.
2. Download and install the app on your mobile device.

Sign up and log in

After installing the Yi IoT app, sign up for a new account or log in if you already have one. Follow the on-screen prompts to complete the process. Make sure to select your country during the sign-up process.

Adding the Camera

To add the camera to your app, follow these steps:

1. Open the Yi IoT app and click on the “Add” button.
2. Follow the on-screen instructions to connect the camera to your Wi-Fi network.
3. If you don't hear the connection sequence, press the RESET button on the camera for more than 5 seconds until you hear the sequence indicating a successful reset.
4. In your mobile phone settings, connect to the Wi-Fi network that the camera is connected to and enter your Wi-Fi password.
5. Scan the QR code displayed on your mobile phone using the camera lens. You will hear a prompt sound indicating successful scanning and Wi-Fi connection.
6. Click “Next” and wait for the network configuration to complete.

Using the App

Once the camera is successfully added to the app, you can use various features and settings:

- **Smart:** Access smart features and functionalities of the camera.
- **Camera Setting:** Configure camera settings such as resolution, motion detection, etc.
- **Full Screen:** View the camera feed in full-screen mode.
- **Local Record:** Record the camera feed locally.
- **Voice Intercom:** Communicate through audio with the camera.
- **Hear the Sound of the Device:** Listen to the audio captured by the camera.
- **Local Screenshot:** Capture screenshots of the camera feed.
- **PTZ Control:** Control the pan, tilt, and zoom functionalities of the camera if available.
- **Alert Messages:** Receive alert notifications from the camera.
- **Playback:** Access recorded footage for playback.
- **Alert Clip:** View specific clips related to alerts.
- **Select Date/Time:** Choose specific dates and times for playback.
- **SD Card Playback:** Playback recorded footage stored on the SD card.
- **Cloud Playback:** Access and playback footage stored in the cloud (requires subscription).
- **Cloud Storage:** Enable cloud storage service to store video (requires subscription).

Frequently Asked Questions (FAQ)

Q: The camera is offline or offline? What should I do?

A: If your camera is offline, try the following troubleshooting steps:

1. Check if the power supply is working properly.
2. Power off and restart the camera to reconnect it to the network.
3. Ensure that the signal coverage is strong enough.
4. Avoid placing the camera in areas with signal interference or shielding.

Q: How does the camera store video?

A: The camera supports the F32 format with a maximum capacity of 64GB. After inserting the SD card, it will automatically record and overwrite the oldest recordings when the storage is full. Additionally, you can opt for cloud storage service to store video by subscribing to it.

Special Statement

Please note the following:

- The product may differ from the actual product, and the instruction manual is for reference only.
- Mobile app and device firmware versions can be updated through the app.
- There might be technical descriptions or inconsistencies with product functions or typographical errors in the manual. Please refer to our company's final interpretation.
- Do not install the product in damp, dusty, high-temperature, flammable, or explosive areas, and keep it out of reach of children.
- RF Exposure: This equipment complies with FCC radiation exposure limits. It should be installed and operated with a minimum distance of 20cm between the radiator and your body.

Download Yi IoT app

Scan QR code below



Search and download

Yi IoT app

In Google play



In App store



The screenshot shows a mobile app login interface. At the top, the status bar displays the time 13:12, signal strength, Wi-Fi, and battery levels. The app header includes a location pin icon, the text "United States of America (USA)", and a dropdown arrow. Below this is a blue square icon with a white person silhouette. The main form consists of two input fields: "Enter email" and "Enter password". To the right of the password field is a small blue eye icon. Below the inputs are two links: "Forgot password" and "Sign up". A large blue "Login" button is centered below these links. At the bottom, there is a section titled "Other login methods" with two circular icons: a blue Facebook 'f' and a black Apple logo. Blue callout boxes with white text point to various elements: "Select Country" points to the location dropdown; "Account and Password" points to the input fields; "Sign up" points to the "Sign up" link; "Forgot Password" points to the "Forgot password" link; and "Other login methods" points to the social media icons.

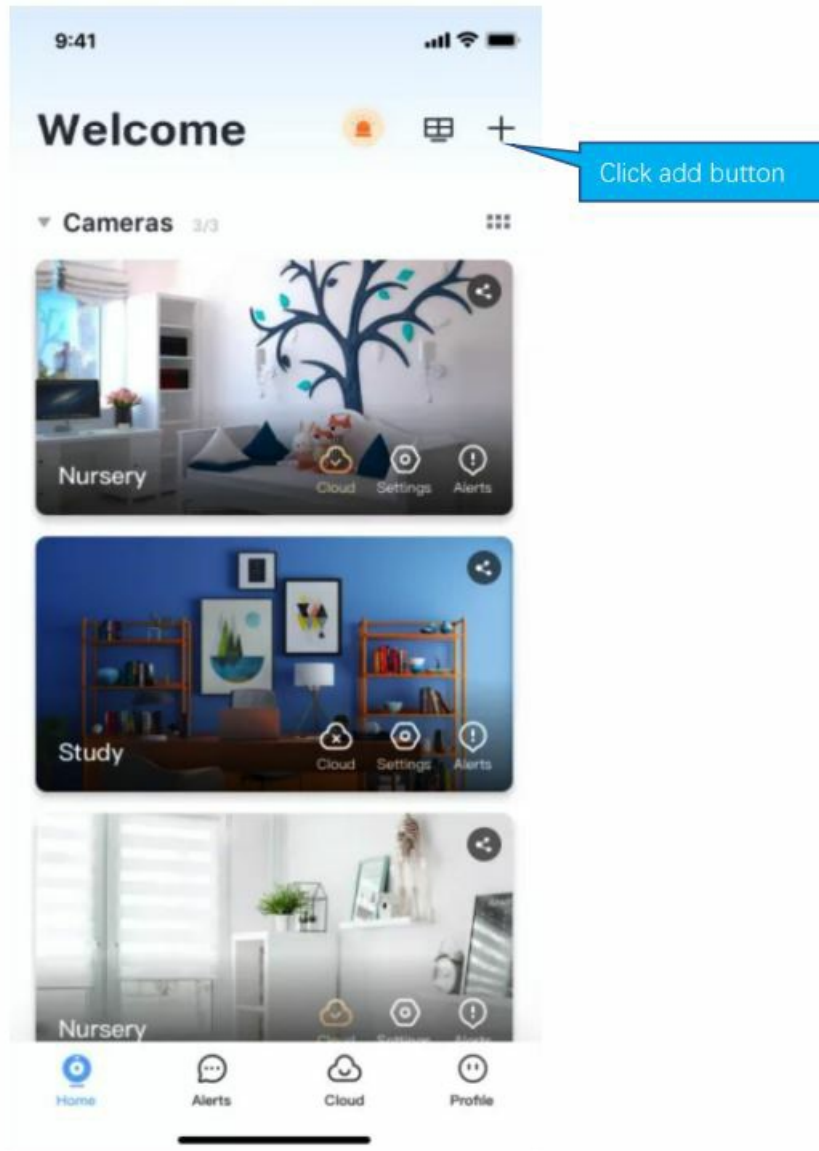
Other login methods

[Sign up](#)[Sign up](#)

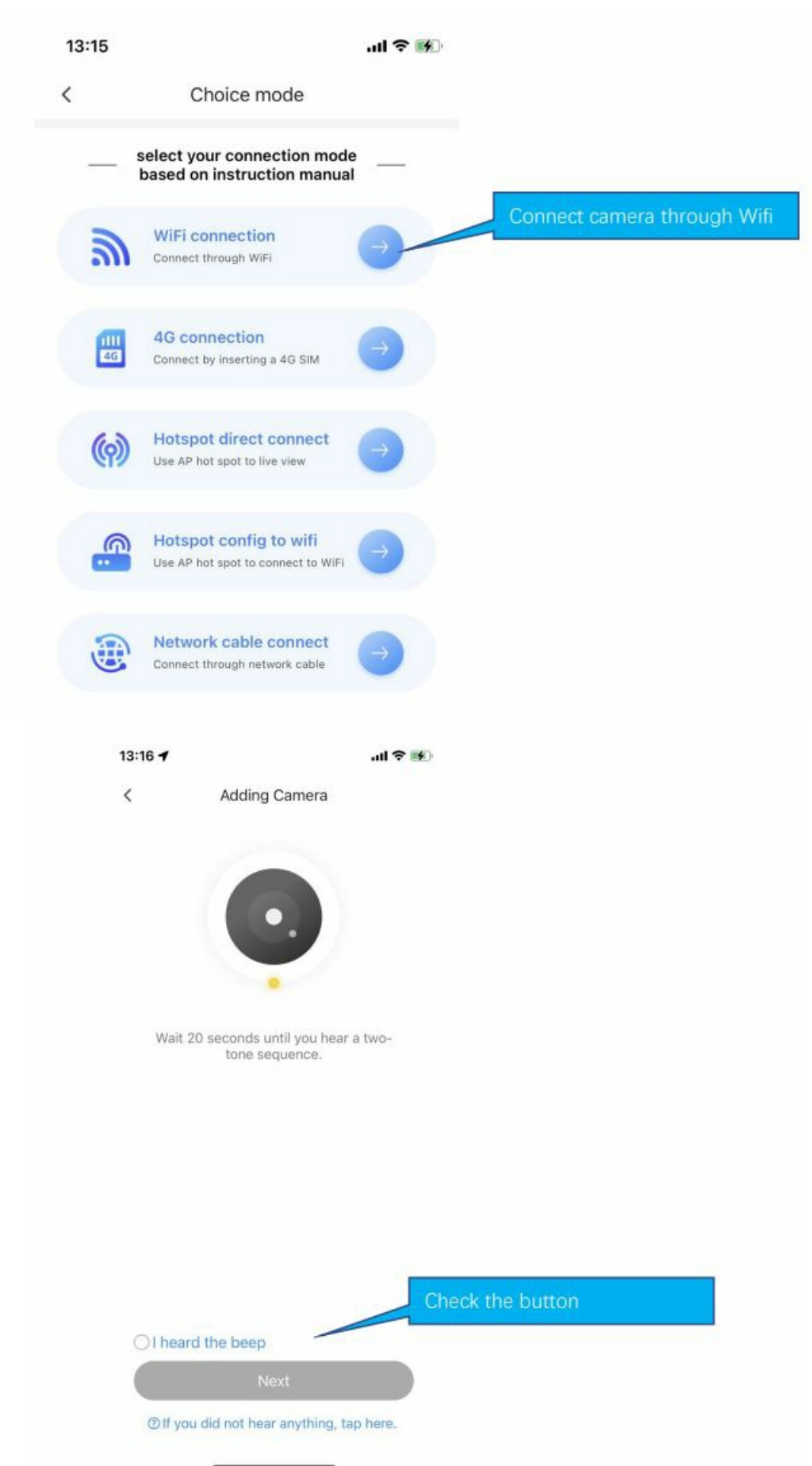
Other login methods



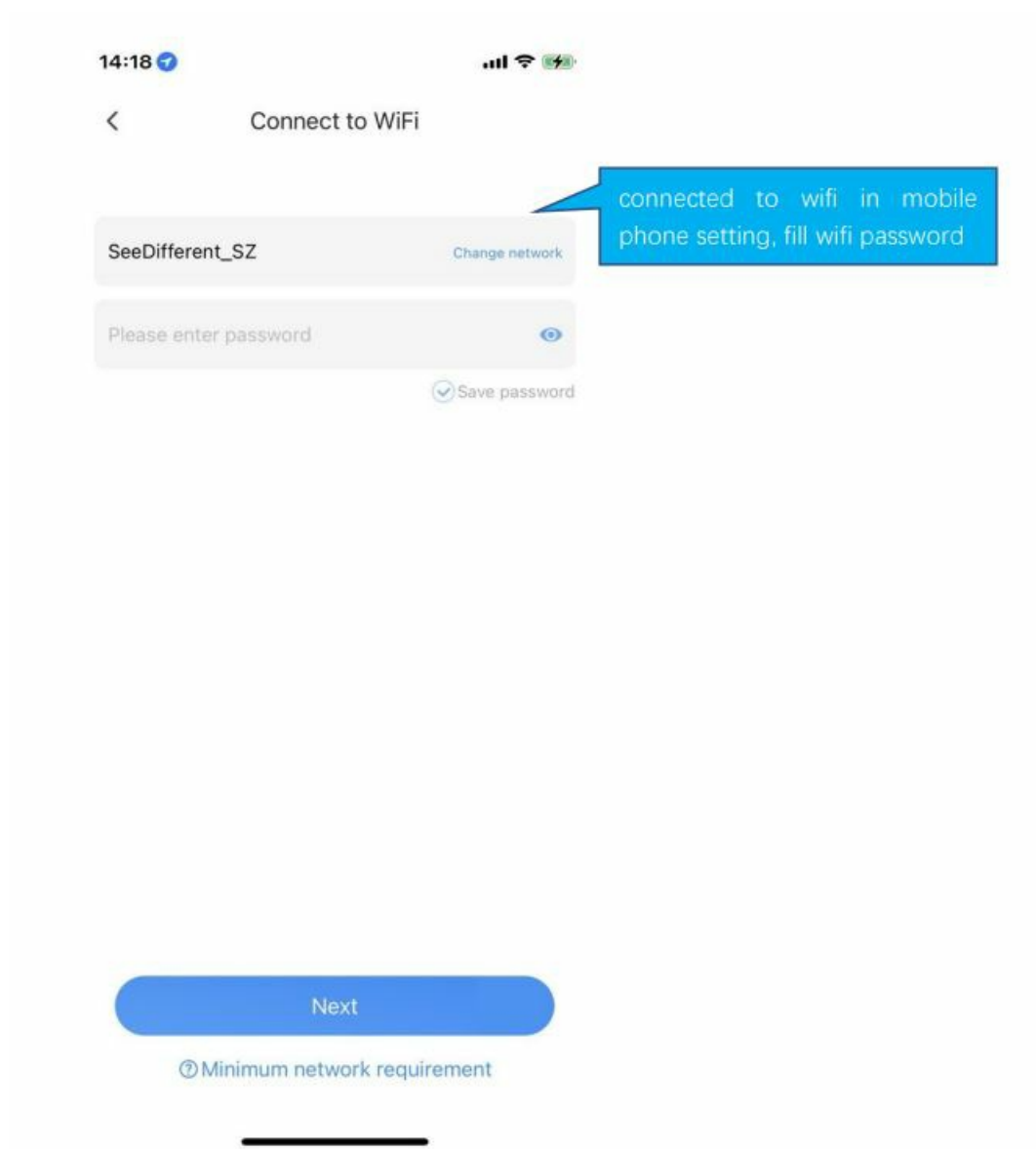
How to add a camera



How to connect with Wi-fi



If you don't hear the sequence, please press the "RESET" on the device. Continue for more than 5 seconds, until you hear the sequence, that means the reset is successful.

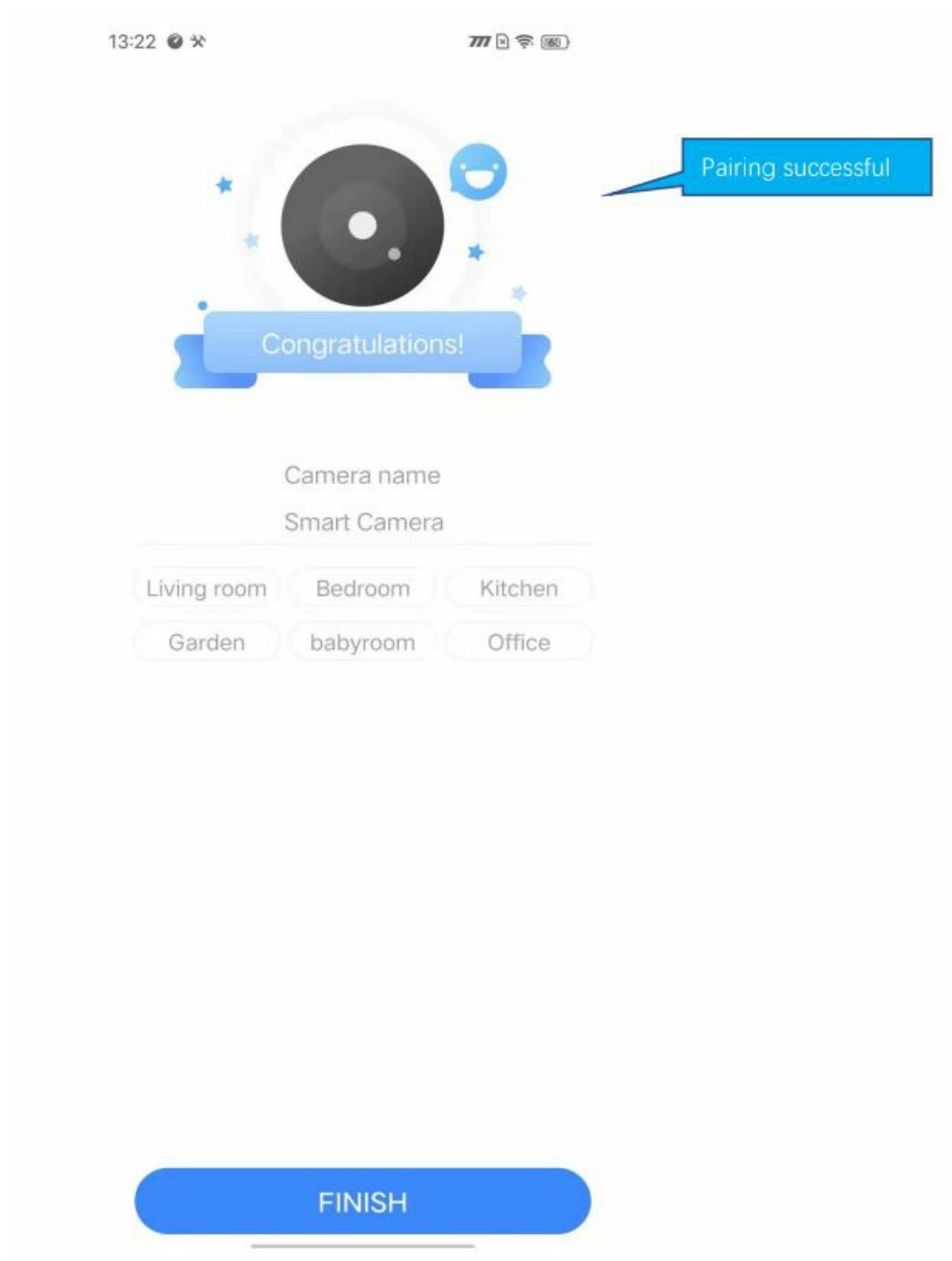


Note:

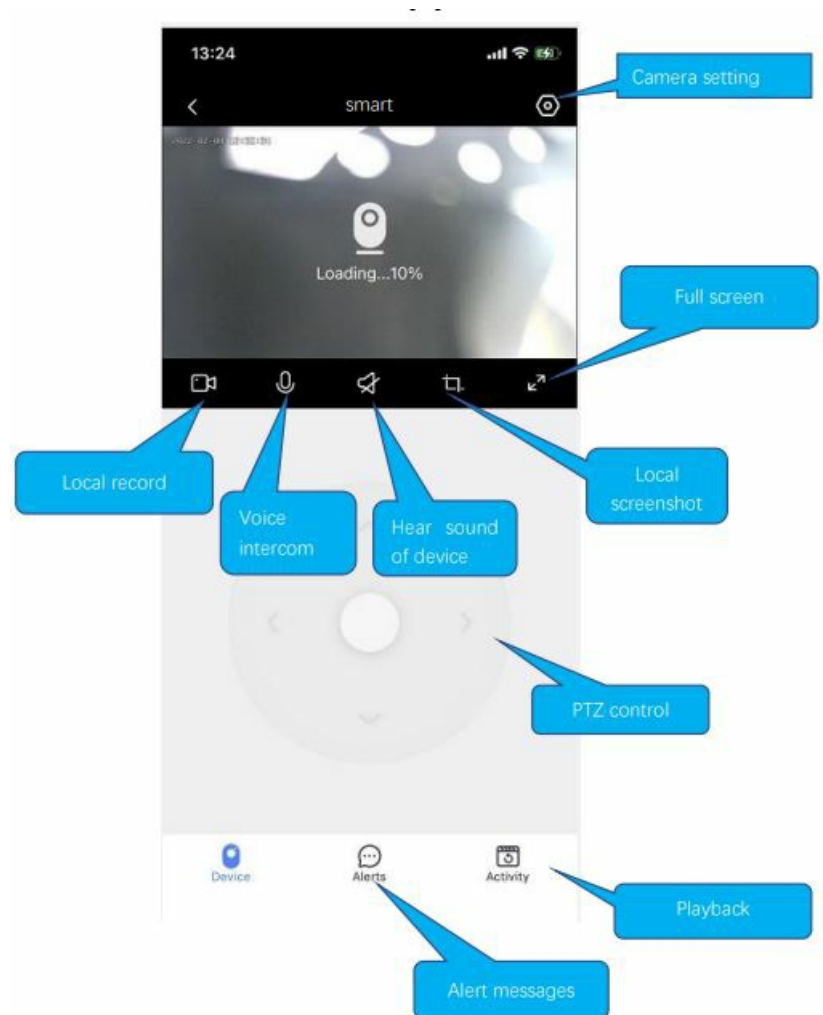
1. 5GHz wireless band is not supported;
2. Please turn on the location of phone connected to wifi in the mobile phone setting, fill in the Wi-Fi password



The QR code that appears on the mobile phone is scanned against the camera lens, and the device emits a prompt sound "QR code scan successful" and "WiFi connected", click Next, and wait for the network configuration to be completed.



How to use the app





< 2022-01-24 >

Alert clip



Smart

15:02

Motion Detected

Alert message



Smart

14:59

Motion Detected



Smart

14:55

Motion Detected

Device



Device

Alerts

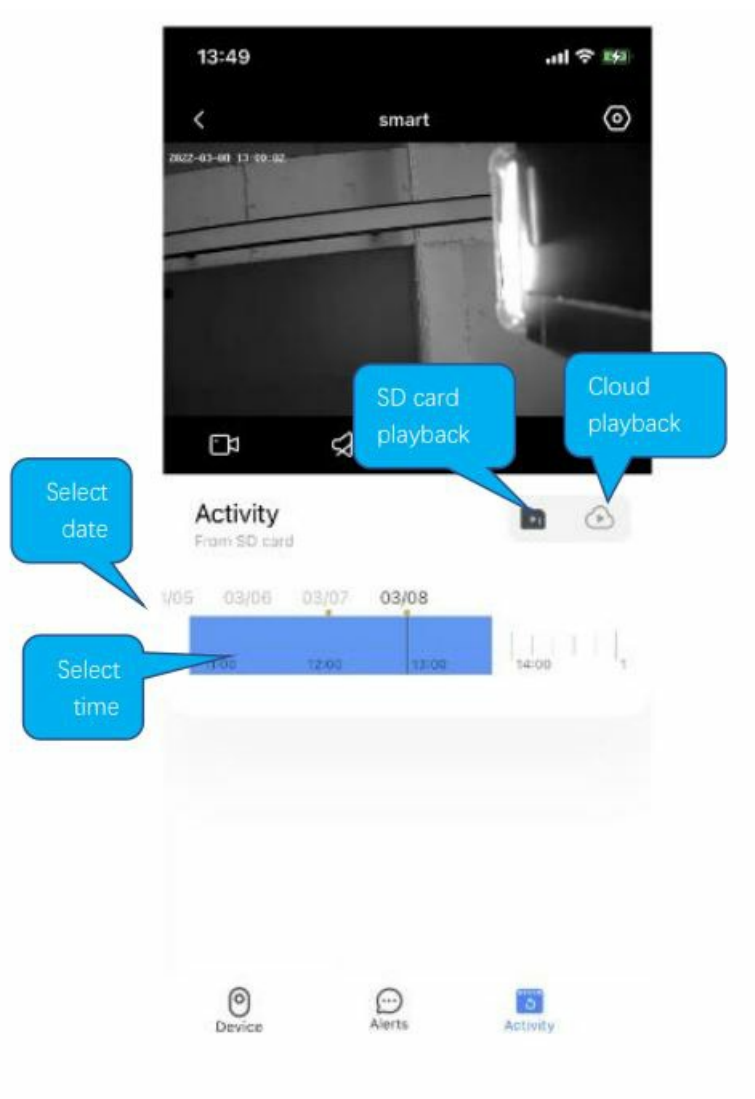


Alerts

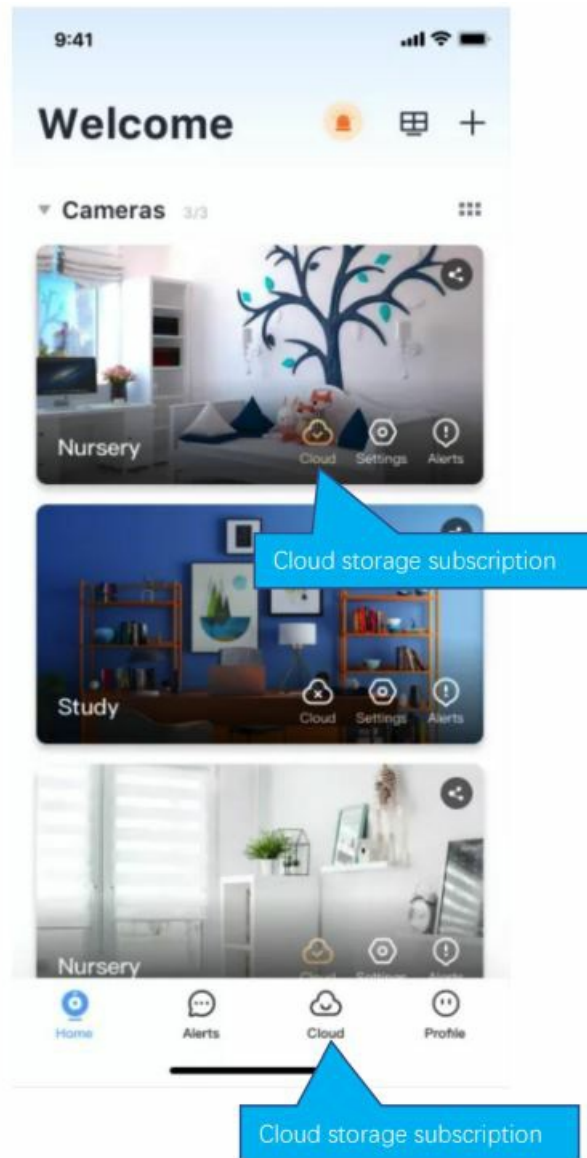
Activity



Activity



Cloud storage



Common problem

Q: The camera is offline or offline

1. Check if the power supply is working properly
2. Power off and restart the device to reconnect to the network
3. The signal coverage is weak
4. Signal interference shielding in special places

Q: How does the camera store video

1. The camera supports the F32 format with a maximum capacity of 64G. After the card is recognized, it automatically records, and when the storage is full, it automatically overwrites the original recording and loops the recording;
2. Support opening cloud storage service to store video

Special statement

- The product is subject to the actual product, the instruction manual is for reference only mobile phone app and device firmware version support updates, and users can upgrade through the app.
- The manual may contain technical descriptions or inconsistencies with product functions or typographical errors. Please understand, please refer to the final interpretation of our company.
- Do not install the product in a place where it is damp, dusty, high temperature, flammable or explosive, and out of reach of children.

This device complies with Part 15 of the FCC Rules. Operation is subject to the following two conditions:

1. This device may not cause harmful interference, and
2. This device must accept any interference received, including interference that may cause undesired operation.

Warning: Changes or modifications not expressly approved by the party responsible for compliance could void the user's authority to operate the equipment.


NOTE: This equipment has been tested and found to comply with the limits for a Class B digital device, under Part 15 of the FCC Rules. These limits are designed to provide reasonable protection against harmful interference in a residential installation. This equipment generates uses and can radiate radio frequency energy and, if not installed and used by the instructions, may cause harmful interference to radio communications. However, there is no guarantee that interference will not occur in a particular installation. If this equipment does cause harmful interference to radio or television reception, which can be determined by turning the equipment off and on, the user is encouraged to try to correct the interference by one or more of the following measures:

- Reorient or relocate the receiving antenna.
- Increase the separation between the equipment and the receiver.
- Connect the equipment to an outlet on a circuit different from that to which the receiver is connected.
- Consult the dealer or an experienced radio/TV technician for help.

RF Exposure

This equipment complies with FCC radiation exposure limits set forth for an uncontrolled environment. This equipment should be installed and operated with a minimum distance of 20cm between the radiator & your body.
2022/3/8 update

Documents / Resources

 <p>Smart camera Instruction ©2022 YI camera</p>	<p>Yi Q6 Security Cameras Wireless App [pdf] Instructions Q6 Security Cameras Wireless, Q6, Security Cameras Wireless, Cameras Wireless, Wireless</p>
---	---

References

- [User Manual](#)

