



VF Tuner App User Guide

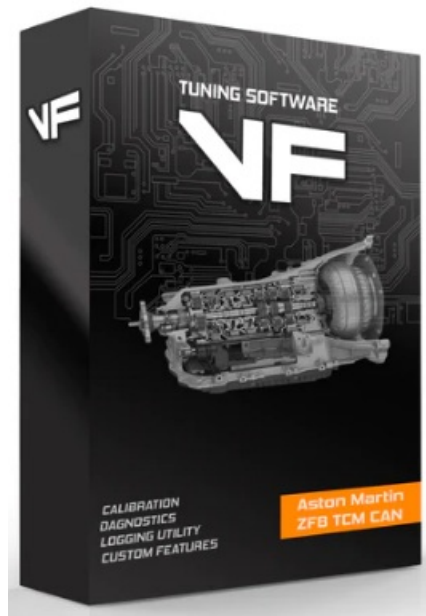
[Home](#) » [VF](#) » VF Tuner App User Guide 

Contents

- [1 VF Tuner App](#)
- [2 Specifications](#)
- [3 Product Usage Instructions](#)
- [4 WHAT YOU'LL NEED](#)
- [5 PROCEDURES](#)
- [6 FAQ](#)
- [7 Documents / Resources](#)
 - [7.1 References](#)
- [8 Related Posts](#)



VF Tuner App



Specifications

- Laptop with VF Tuner
- WiFlash Device or Legacy Device connected to the laptop
- Internet connection
- The vehicle whose ECU ID you need to identify and its car key(s)

Product Usage Instructions

Connect Your Devices

1. Connect the WiFlash/Legacy Device to the cable.
2. Connect the cable to the USB port on your laptop.
3. Connect the WiFlash/Legacy Device to the vehicle's OBD2port.

In step 1-B), you should see the WiFlash/Legacy device light up.

If none, check your connections carefully, and/or try other USB ports on your laptop.

In step 1-C), if you want to test if the car is giving power to the WiFlash/Legacy device, you can disconnect the cable that attaches it to the laptop. If the light stays on, then there's a 12V power coming from the car to power the WiFlash/Legacy device. Make sure to reconnect the cable after testing.

Run/Open VF Tuner

To run VF Tuner:

- If VF Tuner is on the taskbar, right click on the VF Tuner icon and click on Run as administrator.
- If VF Tuner is on the installation folder, locate the VF Tunerexecutable file and run it.
- If VF Tuner is on the desktop, double-click on the VF Tunericon.
- If VF Tuner is on the start menu programs, locate VF Tuner in the programs list and click on it.

ECU ID Identification

If you have a WiFlash device, click on the WiFlash Icon. From here on out, please follow the -A instructions.

WiFlash Vehicle Programming Utility

The WiFlash Vehicle Programming Utility window will pop up. Ensure that:

- The “Log Connection to File” option is checked. This saves a log file on the VF Tuner install folder, which we may ask you to send if there are concerns that arise.
- The Device dropdown displays text. If the dropdown is empty, then the WiFlash device cannot be detected.

Select Vehicle Template

Click on the dropdown menu and select the appropriate template for your vehicle:

- Mazda Skyactiv Denso (2014-2018)
- Mazda Skyactiv Mitsu (2014-2018) – For 2014-2018 Mazda vehicles, except MX-5

WHAT YOU’LL NEED

1. Laptop with VF Tuner
2. WiFlash Device or Legacy Device connected to the laptop
3. Internet connection
4. The vehicle whose ECU ID you need to identify and its car key(s)

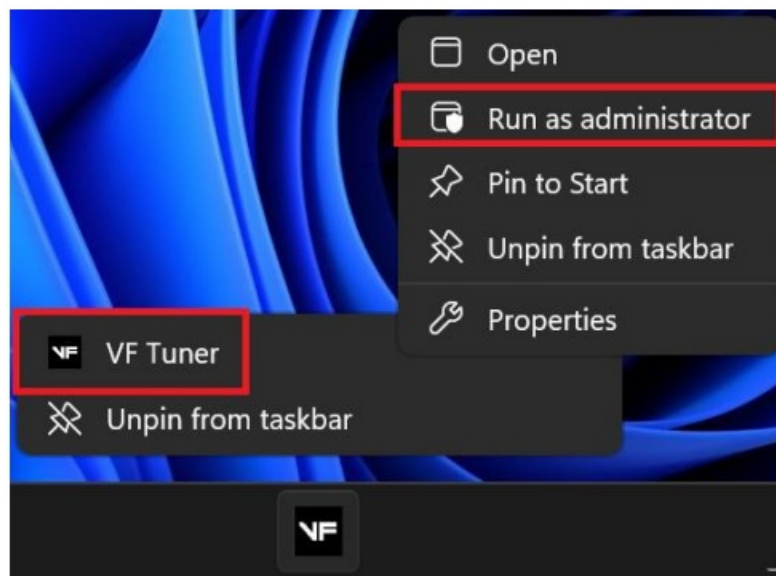
PROCEDURES

- **Connect the following together**
 - **a)** WiFlash/Legacy Device to the cable
 - **b)** The cable to the USB port on your laptop*
 - **c)** The WiFlash/Legacy Device to the vehicle’s OBD2 port**
 - In steps 1-B), you should see the WiFlash/Legacy device light up. If none, check your connections carefully, and/or try other USB ports on your laptop.
 - In steps 1-C), if you want to test if the car is giving power to the WiFlash/Legacy device, you can disconnect the cable that attaches it to the laptop. If the light stays on, then there’s 12V power coming from the car to power the WiFlash/Legacy device. Make sure to reconnect the cable after testing.

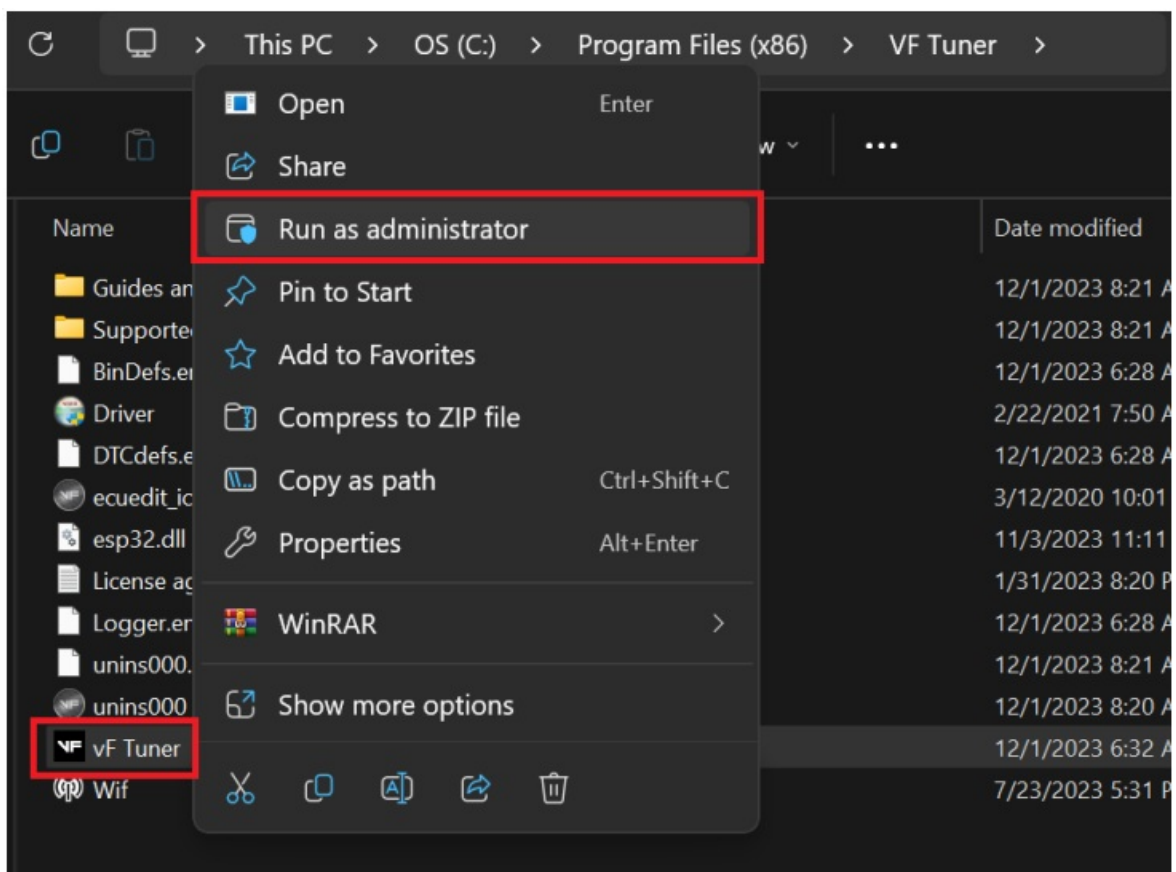
- **Run/Open VF Tuner.**

Right click on the VF Tuner icon and click on “Run as administrator”

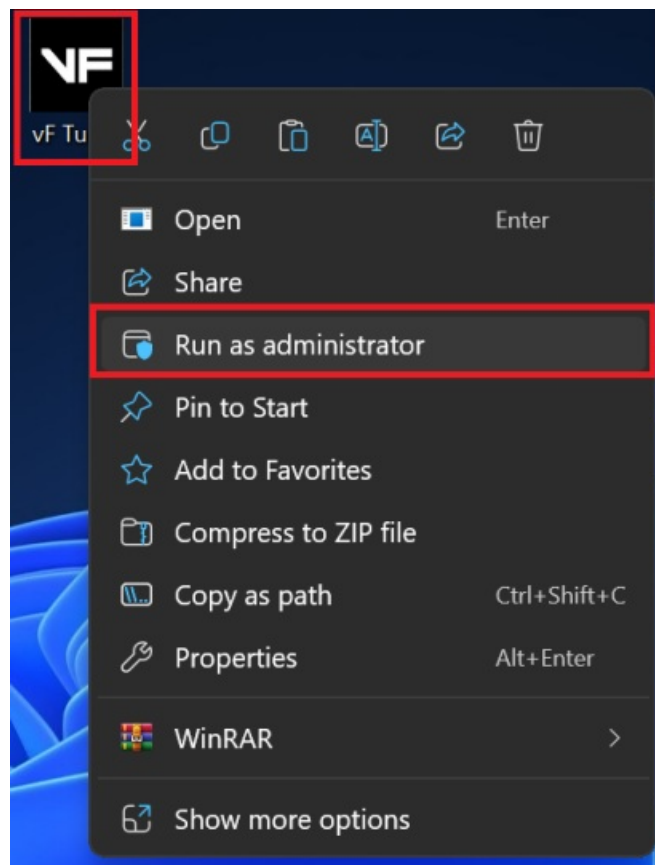
If your VF Tuner is on the taskbar:



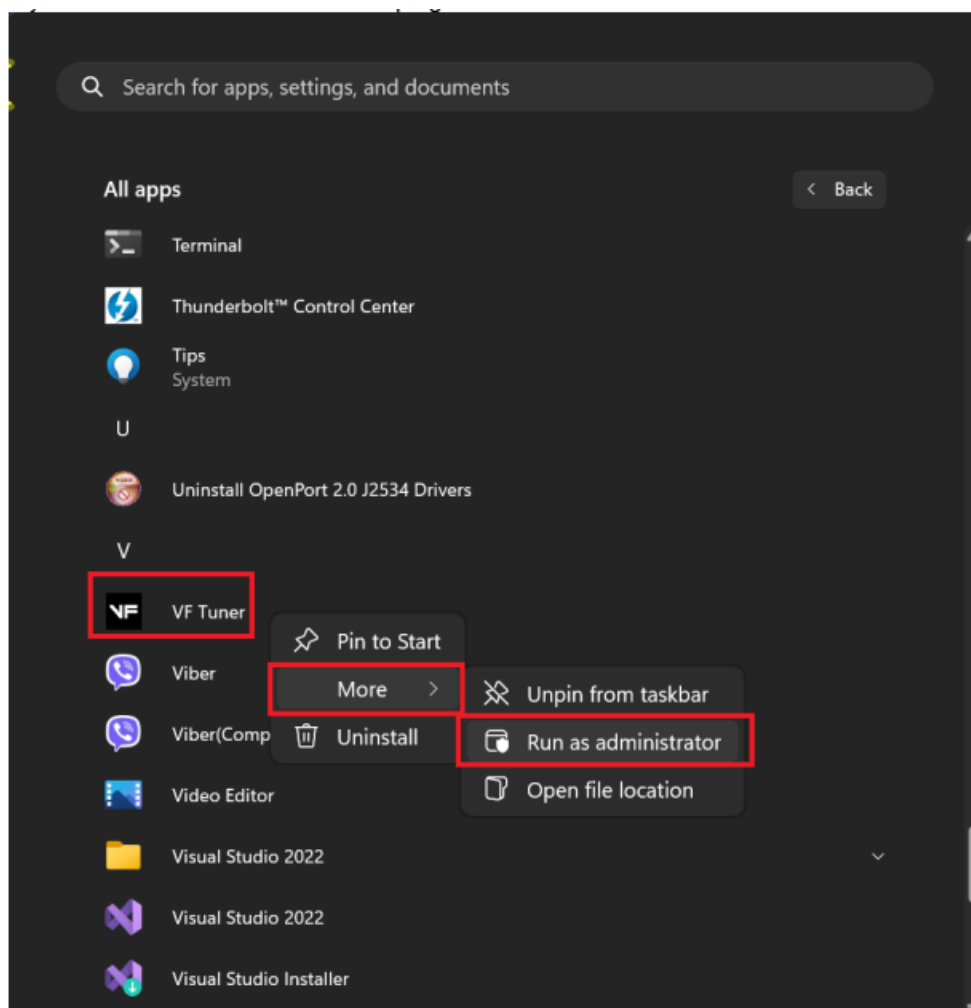
If your VF Tuner is on the installation folder:



If your VF Tuner is on the desktop:

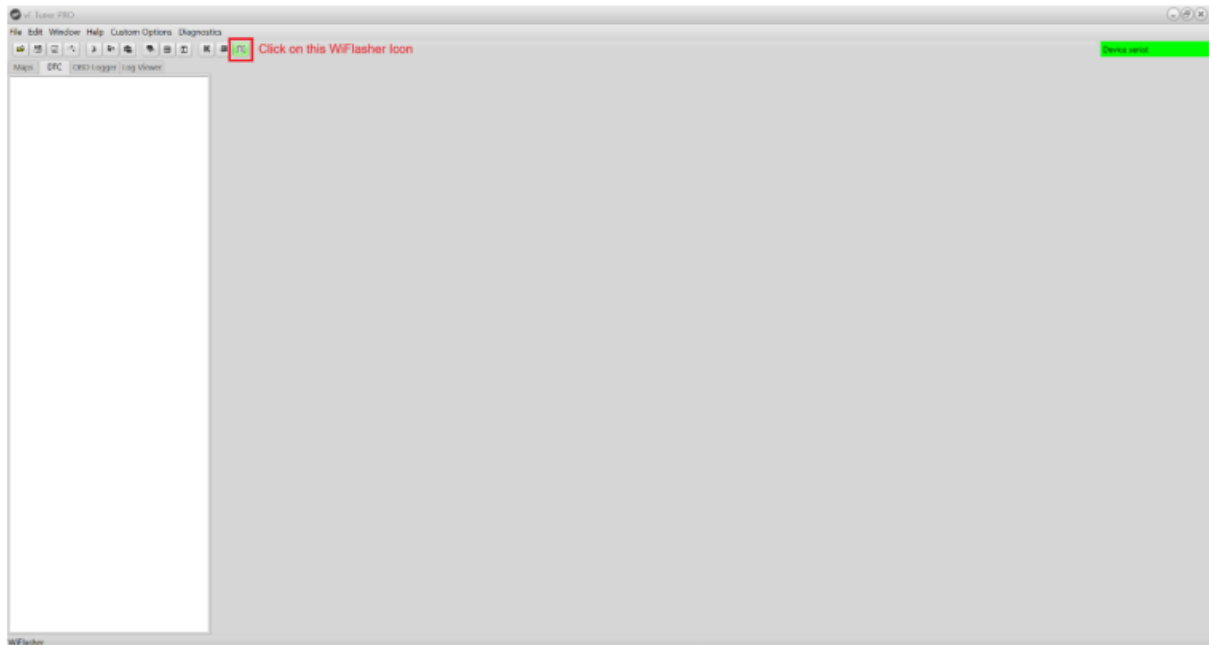


If your VF Tuner is on the start menu programs:

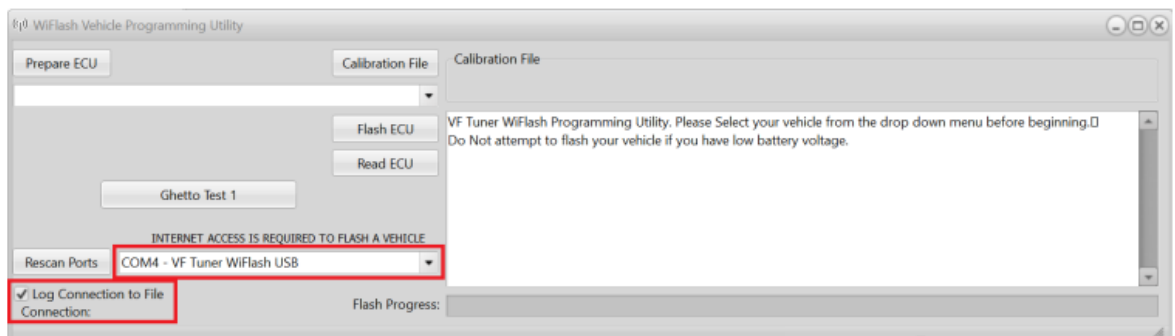


- 3-A) If you have the WiFlash device, click on the WiFlash Icon. From here on out, please follow the -A

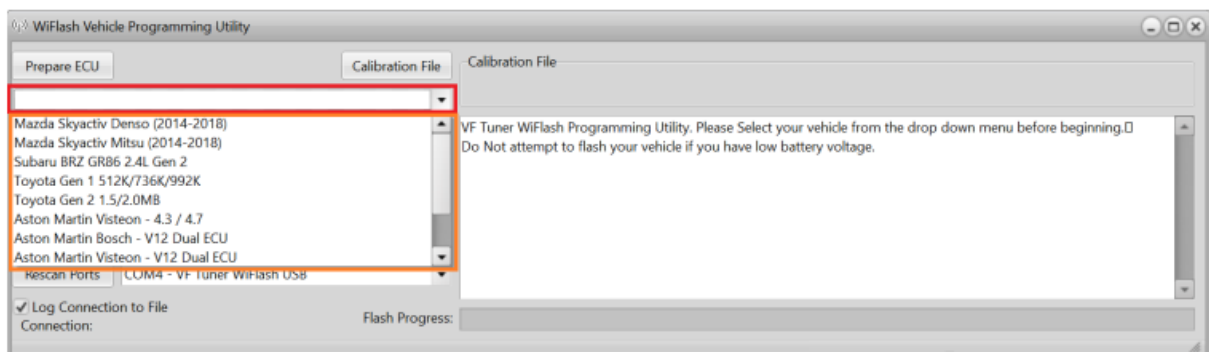
instructions.



- 4-A) The WiFlash Vehicle Programming Utility window will pop up.
 - Make sure that the “Log Connection to File” is checked.
 - this saves a log file on the VF Tuner install folder, which we may ask you to send if there are concerns that arises.
 - And that there is a text on the “Device” dropdown.
 - if the dropdown is empty, then the WiFlash device cannot be detected

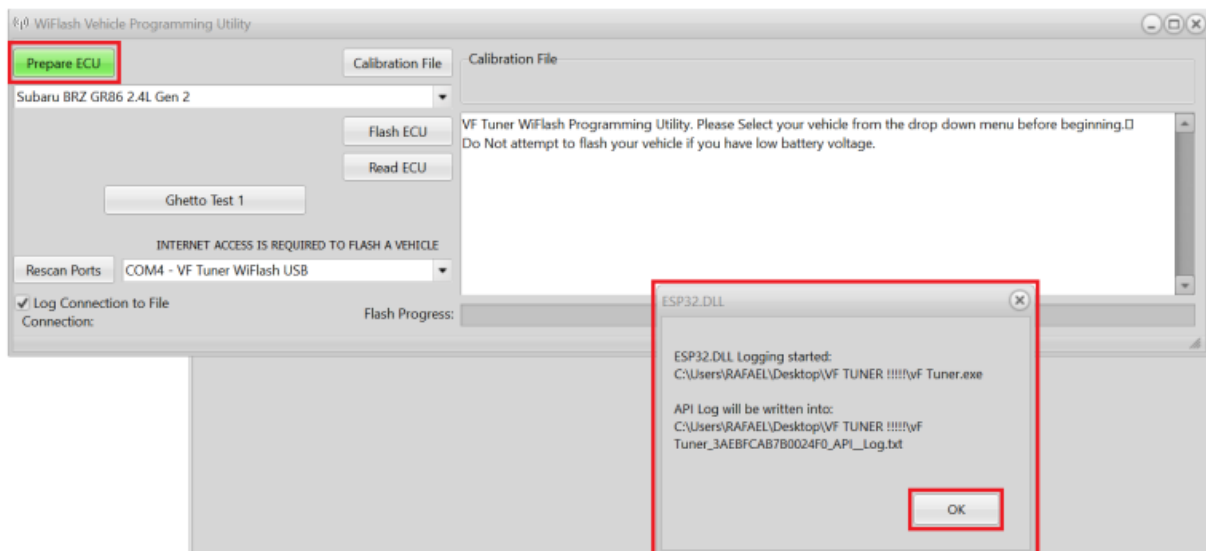


- 5-A) Click on the dropdown menu and select the appropriate template for your vehicle.

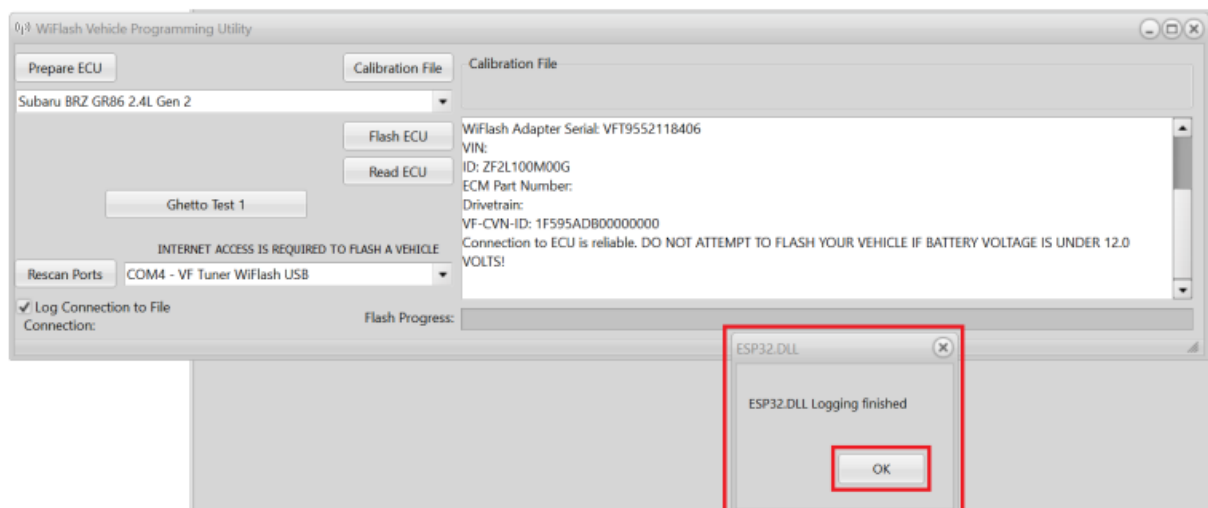


- Mazda Skyactiv Denso (2014-2018)
- Mazda Skyactiv Mitsu (2014-2018)
 - For 2014-2018 Mazda vehicles, except MX-5
 - You can choose either
- **Subaru BRZ GR86 2.4L Gen 2**
 - For 2022+ BRZ/GR86 FA24 vehicles
- **Toyota Gen 1 512K/736K/992K**

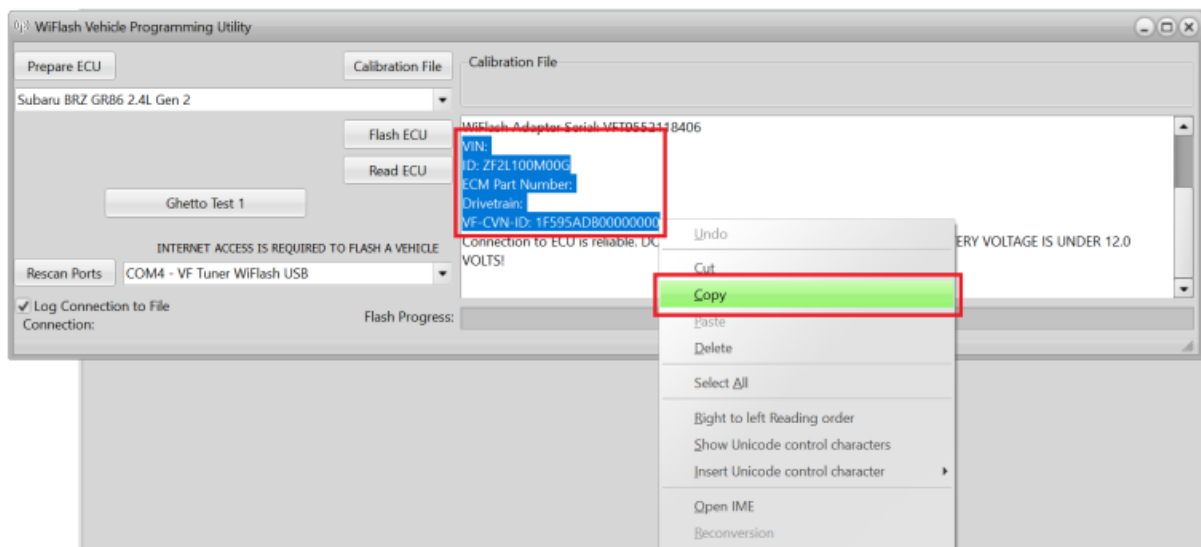
- Toyota Gen 2 1.5/2.0MB
 - For Toyota/Lexus/Scion vehicles
 - You can choose either
 - Aston Martin Visteon – 4.3 / 4.7
 - Aston Martin Bosch – V12 Dual ECU
 - Aston Martin Visteon – V12 Dual ECU
 - For Aston Martin vehicles
- 6- A) Turn on your car's ignition. Make sure that:
 - **a)** all your electrical loads (like air conditioning, headlights, indoor lights, radio, etc) are completely off (or as much as you can turn off)
 - **b)** Your ignition must be on, but your engine is OFF/NOT idling.
 - **c)** Place your car keys as near as you can to the start/stop button.
 - **d)** Make sure you have at least 12V of power from your battery and can maintain that voltage for the duration of the flash.
 - **e)** Check the connections of your WiFlash/Legacy device to the laptop and to the OBD2 port.
 - **f)** Do not move the laptop or the WiFlash/Legacy device to prevent connection loss.
 - **g)** Wait 15-20 seconds before proceeding to the next step.
- 7-A) Click the “Prepare ECU” button. A small window will pop-up, please click “Ok”.



- 8-A) When the ECU prep is finished, a small window will pop-up, please click “Ok”.



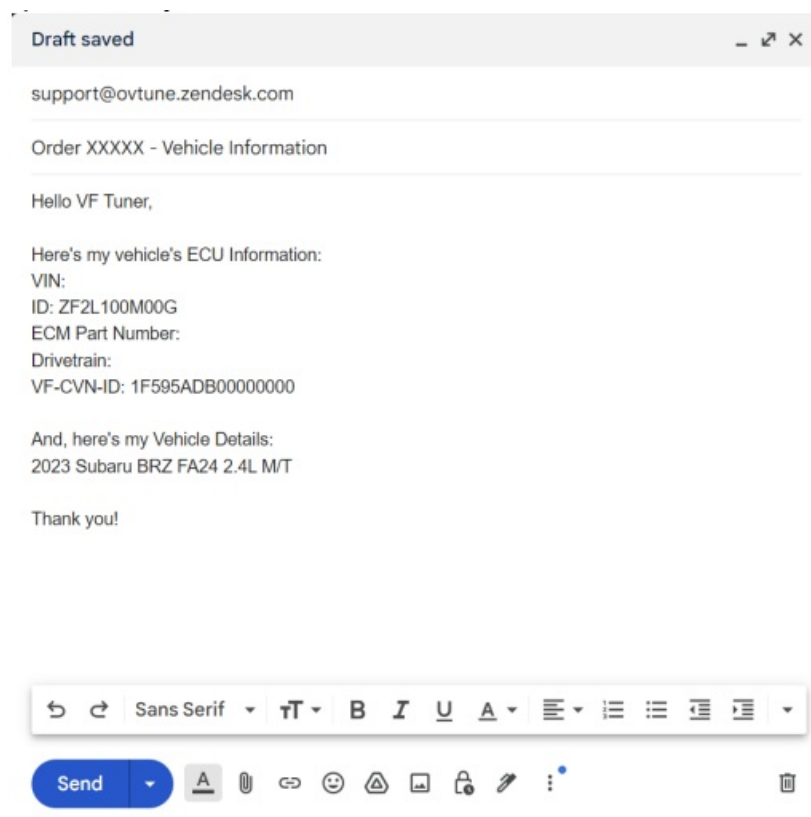
- 9-A) Your ECU's details will be displayed.
Please select your ECU's information, right click on it and select “Copy”.



The "ID" is your ECU ID. This is very important information.

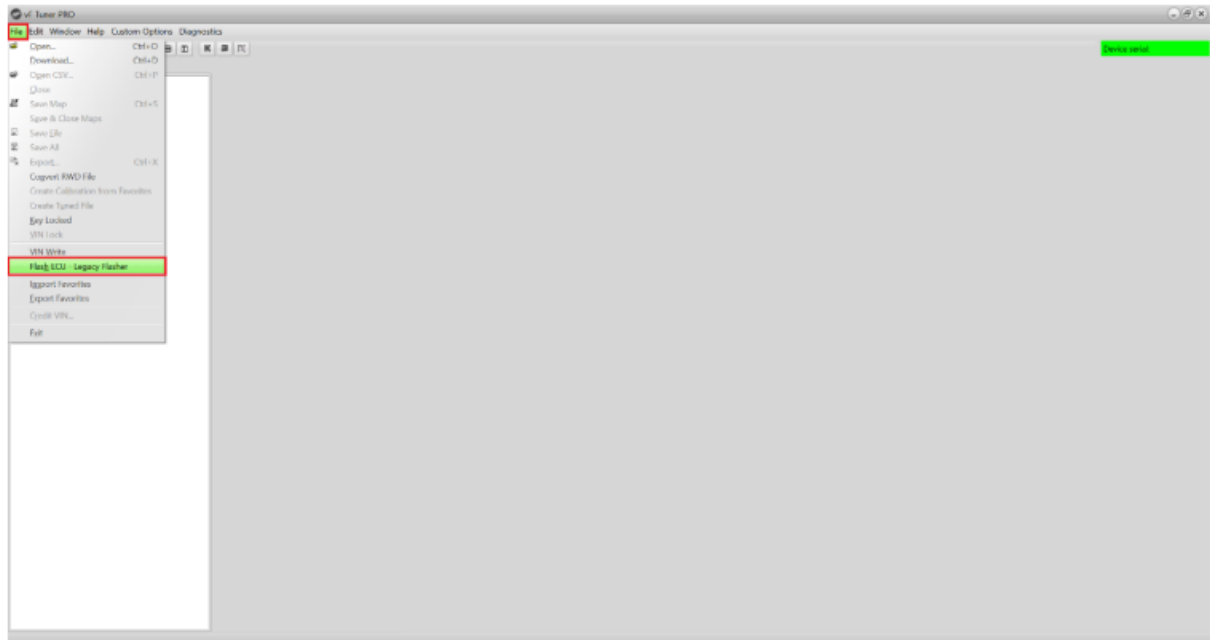
- 10- A) Email us (support@ovtune.zendesk.com) the following information:
 - **a)** Your vehicle's ECU Information (see Step 9-A)
 - **b)** Your vehicle's details (Year, Make, Model, Variant)

Here's an example of how your email should look like:



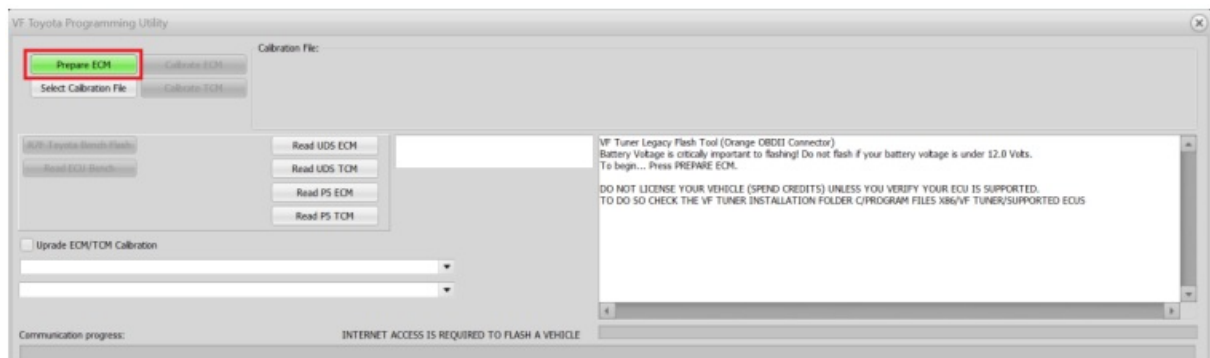
- 11- A) Based on the information you send us; we will reply and
 - **a)** ask you to read the ECU (see instructions manual on reading the ECU) or
 - **b)** inform you that you can start tuning your vehicle. or
 - **c)** send you our pre-made/off-the-shelf (OTS) tune files/pack

3-B) If you have the Legacy device, click on the "File" menu, and select "Flash ECU –Legacy Flasher". From here on out, please follow the -B instructions.



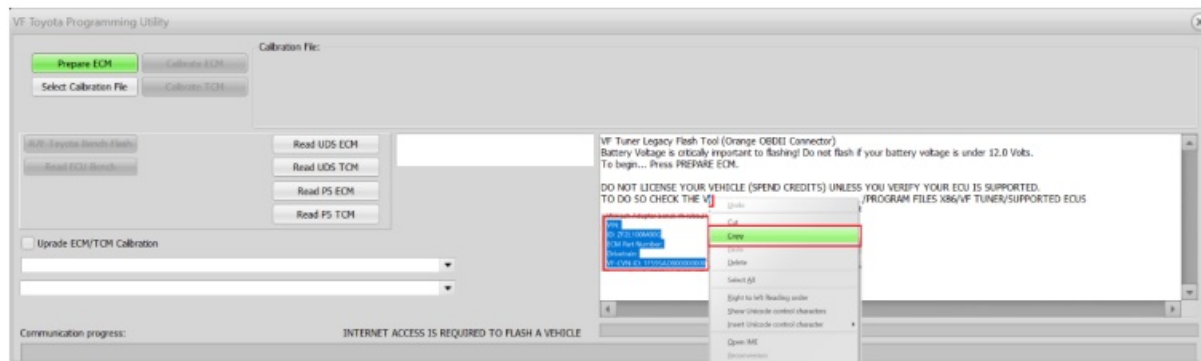
- 4- B) Turn on your car's ignition. Make sure that:
 - **a)** all your electrical loads (like air conditioning, headlights, indoor lights, radio, etc) are completely off (or as much as you can turn off)
 - **b)** Your ignition must be on, but your engine is OFF/NOT idling.
 - **c)** Place your car keys as near as you can to the start/stop button.
 - **d)** Make sure you have at least 12V of power from your battery and can maintain that voltage for the duration of the flash.
 - **e)** Check the connections of your WiFlash/Legacy device to the laptop and to the OBD2 port.
 - **f)** Do not move the laptop or the WiFlash/Legacy device to prevent connection loss.
 - **g)** Wait 15-20 seconds before proceeding to the next step.
- 5- B) The VF Toyota Programming Utility window will pop up.

Click the “Prepare ECM” button.



6-A) Your ECU's details will be displayed.

Please select your ECU's information, right click on it and select “Copy”.

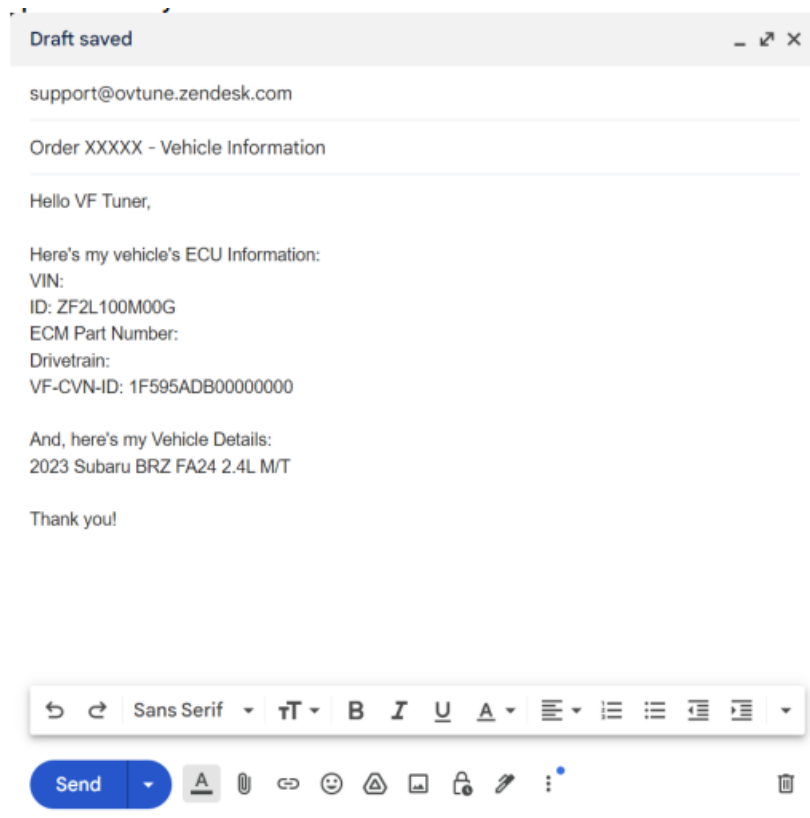


The “ID” is your ECU ID. This is very important information.

7- A) Email us (support@ovtune.zendesk.com) the following information:

- **a)** Your vehicle’s ECU Information (see Step 6-A)
- **b)** Your vehicle’s details (Year, Make, Model, Variant)

Here’s an example of how your email should look like:



8-A) Based on the information you send us; we will reply and

- **a)** ask you to read the ECU (see instructions manual on reading the ECU) or
- **b)** inform you that you can start tuning your vehicle. or
- **c)** send you our pre-made/off-the-shelf (OTS) tune files/pack

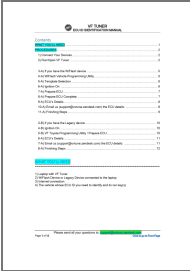
FAQ

- **Q: Where can I send my questions?**

- A: Please send all your questions to: support@ovtune.zendesk.com

Please send all your questions to: support@ovtune.zendesk.com

Documents / Resources



[VF Tuner App \[pdf\] User Guide](#)
Tuner App, App

References

-  [Zendesk | We build softwares to make customer service better](#)
- [User Manual](#)

Manuals+, Privacy Policy

This website is an independent publication and is neither affiliated with nor endorsed by any of the trademark owners. The "Bluetooth®" word mark and logos are registered trademarks owned by Bluetooth SIG, Inc. The "Wi-Fi®" word mark and logos are registered trademarks owned by the Wi-Fi Alliance. Any use of these marks on this website does not imply any affiliation with or endorsement.