



**Singlepass Curl X
Professional
Curling Iron**



T3 Singlepass Curl X Professional Curling Iron User Guide

[Home](#) » [T3](#) » T3 Singlepass Curl X Professional Curling Iron User Guide 

Contents

- [1 T3 Singlepass Curl X Professional Curling Iron](#)
- [2 Product Usage Instructions](#)
- [3 IMPORTANT SAFETY INSTRUCTIONS](#)
- [4 MAINTENANCE INSTRUCTIONS](#)
- [5 OPERATING INSTRUCTIONS](#)
- [6 HOW TO USE YOUR](#)
- [7 T3 LIMITED WARRANTY TERMS & CONDITIONS](#)
- [8 DECLARATION OF CONFORMITY](#)
- [9 FCC](#)
- [10 Documents / Resources](#)
 - [10.1 References](#)



T3 Singlepass Curl X Professional Curling Iron



Product Usage Instructions

How to Use the Product:

1. **Prepare Hair:** Always begin with dry, detangled hair.
2. **Section Hair:** Insert the tip of a 1-2 inch section into the clip and roll the iron upwards toward the scalp.
3. **Wrap Hair:** While rolling, ensure the section of hair does not overlap itself. Make sure the entire section of hair is evenly wrapped around the barrel.
4. **Apply Heat:** Hold the iron until heat has fully penetrated the section of hair.
5. **Release Curl:** Carefully open the clip and release the curl.
6. **Repeat:** Repeat until all sections are styled. For looser curls, tug lightly on the curled section before allowing it to cool.

Frequently Asked Questions (FAQ)

- **Q: How do I clean the product?**

A: To clean the product, make sure it is unplugged and completely cooled down. Use a soft, damp cloth to wipe the barrel and other surfaces. Do not use harsh chemicals or immerse the product in water.

- **Q: What should I do if the product stops working?**

A: If the product stops working, first check the power source and ensure it is plugged in correctly. If the issue persists, refer to the user manual for troubleshooting steps or contact customer support for assistance.

IMPORTANT SAFETY INSTRUCTIONS

READ ALL INSTRUCTIONS BEFORE USING

When using electrical appliances, especially when children are present, basic safety precautions should always be followed, including the following:

KEEP AWAY FROM WATER

Electricity and water are a dangerous combination and can cause death by electric shock. Do not allow electrical cords to come into contact with water or other liquids.

ELECTRICAL APPLIANCES ARE ELECTRICALLY LIVE WHEN PLUGGED IN, EVEN IF TURNED OFF.

To reduce the risk of death by electric shock:

1. Always unplug the appliance immediately after using.
2. Do not use while bathing.
3. Do not place or store the appliance where it can fall or be pulled into a bathtub or sink.
4. Do not place in or drop into water or other liquid.
5. If the appliance falls into water, unplug it immediately. Do not reach into the water.

To reduce the risk of burns, electrocution, fire or injury to persons:

1. An appliance should never be left unattended when plugged in.
2. Close supervision is necessary when this appliance is used on, or near children or individuals with certain disabilities.
3. Use this appliance only for its intended use as described in this manual. Do not use attachments not recommended by the manufacturer.
4. Never operate this appliance if it has a damaged cord or plug, if it is not working properly, or if it has been dropped, damaged, or dropped into water. Return the appliance to a service center for examination and repair.
5. Keep the cord away from heated surfaces. Do not wrap the cord around the appliance.
6. Never use while sleeping
7. Never insert any object into the styling iron.
8. Do not use outdoors or operate where aerosol (spray) products are being used or where oxygen is being administered.
9. Do not use an extension cord with this appliance.
10. This styling iron is hot when in use. Do not let eyes and bare skin touch the heated surfaces.
11. Do not place the heated styling iron directly on any surface while it is hot or plugged in.
12. Do not use if the plug is loose in the outlet, as there may be risk of fire, electric shock, electrical shortage and burning.
13. Make sure to remove the plug from the wall outlet after use.

Do not use the appliance near a bathtub, washbasin or other vessel filled with water. Never place the appliance in water or any other liquid.

MAINTENANCE INSTRUCTIONS

1. Your appliance is virtually maintenance-free. It contains no user-serviceable parts, and no lubrication is needed.

2. Keep heated surfaces clean and free of dust, dirt, and hairspray.
3. If cleaning becomes necessary, disconnect the appliance from the power source and let it cool. Wipe the exterior with a damp cloth.
4. If any malfunction occurs, unplug the appliance, allow it to cool, and return it to a service center to repair.
5. Never wrap the cord around the appliance since this will cause the cord to wear prematurely and break. If the cord becomes twisted, untwist it prior to use.
6. Handle the cord carefully for a longer life and do not put any stress on the cord where it enters the handle. Avoid jerking, twisting or straining especially at the plug connections. It could cause the cord to fray and possibly break.
7. Do not attempt to repair the appliance yourself.

STORAGE

When not in use, your styling iron should be disconnected and stored in a safe, dry location, out of reach of children. Do not wrap the cord around the styling iron. Allow the cord to hang or lie loose and straight at the point of entry into the styling iron.

SERVICING OF DOUBLE-INSULATED APPLIANCES

In a double-insulated appliance, two systems of insulation are provided instead of earthing. No earthing means is provided on a double-insulated appliance, nor should a means for earthing be added to the appliance.

Replacement parts for double-insulated appliances must be identical to the parts they replace. A double-insulated appliance is marked with the words "DOUBLE INSULATION" or "DOUBLE INSULATED". The symbol (square within a square) may also be marked on the appliance.

OPERATING INSTRUCTIONS

This appliance is intended for household use. Use on Alternating Current (50/60 Hz) only.

This appliance has a polarized plug (one blade is wider than the other). As a safety feature, this plug will fit in a polarized outlet only one way. If the plug does not fit fully in the outlet, reverse the plug. If it still does not fit, contact a qualified electrician. Do not attempt to defeat this safety feature.

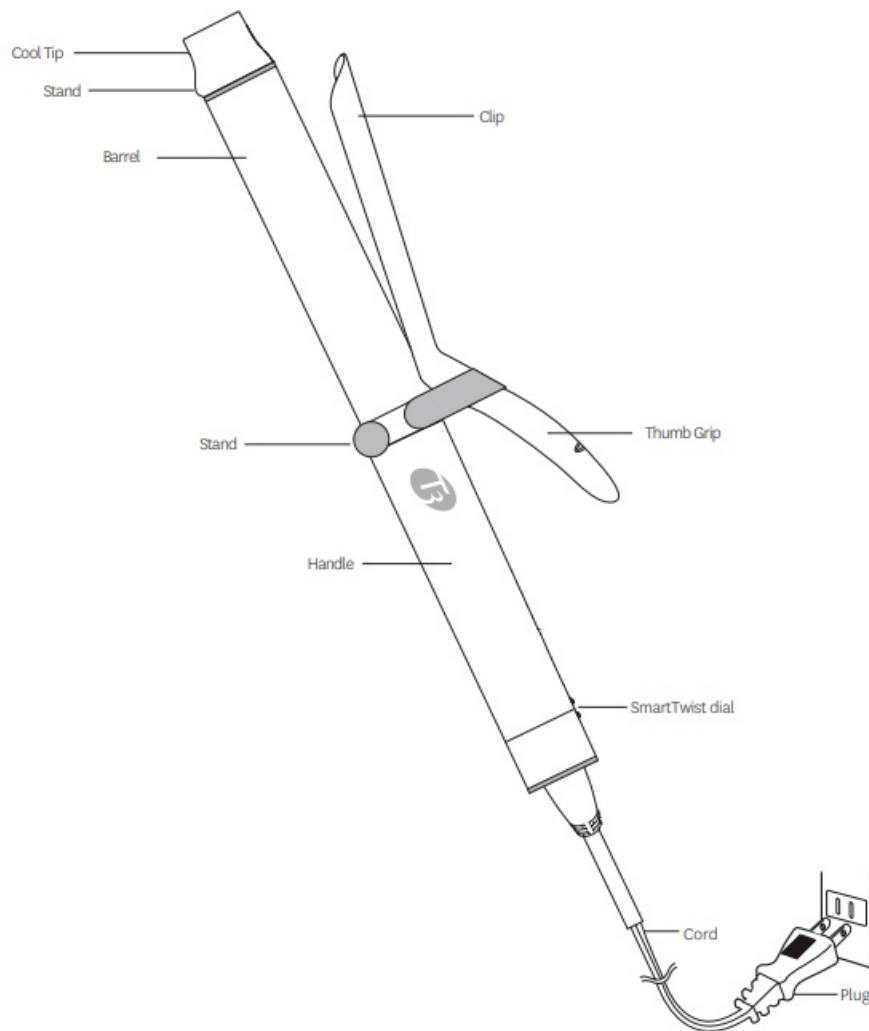
AUTO SHUT-OFF

After approximately one hour, the unit will automatically shut itself off. To reactivate the unit, press and hold the lit Power Button until the iron vibrates, and lights start to cascade up.

AUTO WORLD VOLTAGE

This appliance contains a special electronic circuit that automatically converts it for worldwide usage – from 100 to 240 volts AC 50/60 Hz. Just plug it into the local power outlet and use it as normal; the styler will automatically adjust to the local current. You may need a plug adapter to allow the plug to fit into the local outlets.

Note: Tool heat-up time may vary based on country and voltage.



*The diagram does not accurately reflect all T3 SinglePass Curl X sizes.

TEMPERATURE GUIDE

For optimal results, select the right heat setting for your hair type. See the temperature guide below to determine your heat setting. We suggest starting at a lower setting and building your way up as needed.



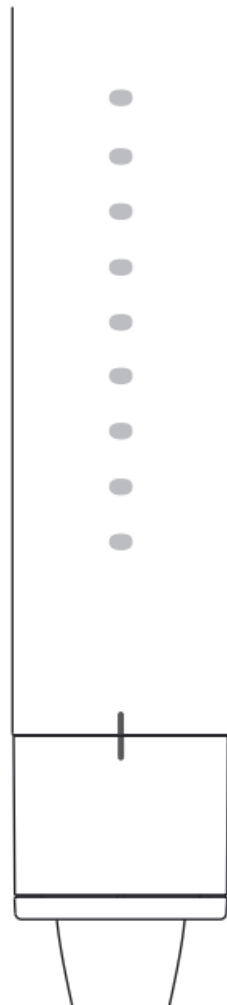
Fine — #1-4



Medium — #5-6



Coarse — # 7-9

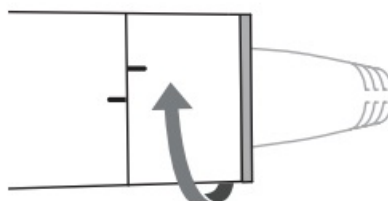


- 9 (410°F / 210°C)
- 8 (400°F / 205°C)
- 7 (390°F / 199°C)
- 6 (370°F / 188°C)
- 5 (350°F / 177°C)
- 4 (325°F / 163°C)
- 3 (300°F / 149°C)
- 2 (280°F / 138°C)
- 1 (260°F / 127°C)

* If your hair is color-treated,
reduce temperature by 1-2 heat
settings for optimal results.

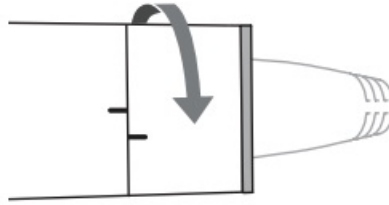
1. To power on, turn the SmartTwist dial once to the right. Lights will cascade, then turn solid when the tool is ready to use.

To power off, turn the SmartTwist dial to the left and hold for 2 seconds. The lights will cascade down and turn off.

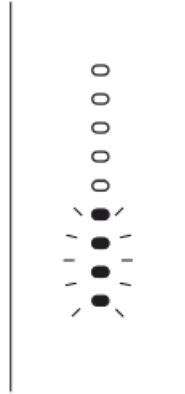


2. To increase the temperature, turn the SmartTwist dial once to the right. Repeat until you reach your preferred heat setting.

To decrease the temperature, turn the SmartTwist dial once to the left. Repeat until you reach your preferred heat setting.



3. Release the SmartTwist dial after reaching your desired heat setting. The selected temperature lights) will blink twice, and lights will cascade up or down to your selected heat setting. Wait for the lights to turn solid before using the tool.



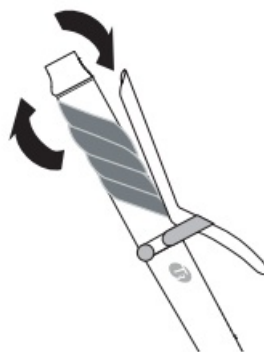
Note: Each time you turn on this styling tool, it will heat up to your last set temperature.

HOW TO USE YOUR

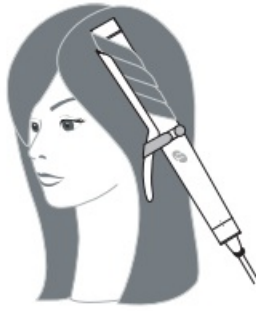
1. Always begin with dry, detangled hair. Insert the tip of a 1-2" section into the clip and roll the iron upwards toward the scalp.



2. While rolling, make sure the section of hair does not overlap itself. Ensure the entire section of hair is evenly wrapped around the barrel.



3. Hold the iron until the heat has fully penetrated the section of the hair. Then carefully open the clip and release the curl.



4. Repeat until all sections are styled. For looser curls, tug lightly on the curled section before allowing it to cool.



Styling tip: For extra styling control, use your non-dominant hand to grasp the cool tip as you style.

T3 LIMITED WARRANTY TERMS & CONDITIONS

T3 Micro will repair or replace (at our option) T3 products for twenty- four (24) months from the date of purchase if they are defective in workmanship or materials. This limited warranty does not cover (1) damage due to misuse or abuse, such as incorrect voltage supply, dropping, or failure to follow enclosed instructions or (2) tampering, such as repair or attempt to repair. To obtain service under this warranty, please visit www.T3Micro.com/warranty-info to submit a warranty claim, or call us at [866-376-8880](tel:866-376-8880) to receive detailed instructions. You will be required to provide proof of purchase.

THIS LIMITED WARRANTY IS ONLY VALID IF THE PRODUCT IS PURCHASED FROM AN AUTHORIZED SELLER OF T3 GOODS AND IF THE ORIGINAL SERIAL NUMBER ON THE PRODUCT HAS NOT BEEN REMOVED OR OTHERWISE TAMPERED WITH.

Any implied warranties, obligations, or liabilities, including but not limited to the implied warranty of merchantability and fitness for a particular purpose, shall be limited in duration to the 24 month duration of this written limited warranty. Some states do not allow a limitation on how long an implied warranty lasts, so the above limitation may not apply to you.

IN NO EVENT SHALL T3 BE LIABLE FOR ANY SPECIAL, INCIDENTAL, OR CONSEQUENTIAL DAMAGES FOR BREACH OF THIS OR ANY OTHER WARRANTY, EXPRESS OR IMPLIED.

Visit www.T3Micro.com/customer-service to complete your warranty registration.

DECLARATION OF CONFORMITY

SUPPLIER'S DECLARATION OF CONFORMITY 47 CFR § 2.1077 COMPLIANCE INFORMATION

- **Model Name:** T3 SinglePass Curl X
- **Model Description:** 1", 1 1/4", 1 1/2" professional curling iron with extra-long barrel
- **Model Number:** 300292-UL, 300392-UL, 300492-UL, 300297-UL, 300397-UL, 300497-UL, 300298-UL,

300398-UL, 300498-UL, 300299-UL, 300399-UL, 300499-UL

- **Responsible Party in USA:**

T3 Micro, Inc.

880 El Segundo Ca 90245

866.376.8880

- **Test Report Number:** 231010214GZU-001

FCC

This equipment has been tested and found to comply with the limits for a Class B digital device, under Part 15 of the FCC Rules. These limits are designed to provide reasonable protection against harmful interference in a residential installation. This equipment generates, uses, and can radiate radio frequency energy and, if not installed and used by the instructions, may cause harmful interference to radio communications. However, there is no guarantee that interference will not occur in a particular installation. If this equipment does cause harmful interference to radio or television reception, which can be determined by turning the equipment off and on, the user is encouraged to try to correct the interference by one or more of the following measures:

- Reorient or relocate the receiving antenna.
- Increase the separation between the equipment and the receiver.
- Connect the equipment to an outlet on a circuit different from that to which the receiver is connected.
- Consult the dealer or an experienced radio/TV technician for help.

FCC Compliance Statement

This device complies with Part 15 of the FCC Rules. Operation is subject to the following two conditions: (1) this device may not cause harmful interference, and (2) this device must accept any interference received, including interference that may cause undesired operation.

No change or modification to this equipment shall be made without the express written approval of the “responsible party” as defined in the FCC’s rules.

SPECIFICATIONS

- **Operating Voltage:** 100 – 240VAC
- **Power Consumption:** 300292-UL | 300297-UL | 300298-UL | 300299-UL: 78W 300392-UL | 300397-UL | 300398-UL | 300399-UL: 95W 300492-UL | 300497-UL | 300498-UL | 300499-UL: 110W


T3 Micro, Inc.

El Segundo, CA USA.

Made in China

WARNING: Do not use the appliance near a shower, bathtub, washbasin or other vessel filled with water. Never place the appliance in water or any other liquid.

Documents / Resources

 T3 SINGLEPASS CURL X <small>100% Nickel Stainless Steel Professional Curling Iron</small> <small>T3 Singlepass Curl X Professional Curling Iron with rotary heating has a 100% professional curling iron with rotary heating in 10 min. 30 min. 45 min. Regular professional curling iron with rotary heating in 20 min. 30 min. 45 min.</small> <small>Model No. T3 Singlepass Curl X Professional Curling Iron 300292-UL, 300392-UL, 300492-UL, 300297-UL, 300397-UL, 300497-UL, 300298-UL, 300398-UL, 300498-UL, 300299-UL, 300399-UL, 300499-UL</small>	T3 Singlepass Curl X Professional Curling Iron [pdf] User Guide 300299-UL-10, Singlepass Curl X Professional Curling Iron, Singlepass Curl X, Singlepass Curl X Curling Iron, Professional Curling Iron, Curling Iron, Iron, 300292-UL, 300392-UL, 300492-UL, 300297-UL, 300397-UL, 300497-UL, 300298-UL, 300398-UL, 300498-UL, 300299-UL, 300399-UL, 300499-UL
---	--

References

- [User Manual](#)

[Manuals+](#), [Privacy Policy](#)

This website is an independent publication and is neither affiliated with nor endorsed by any of the trademark owners. The "Bluetooth®" word mark and logos are registered trademarks owned by Bluetooth SIG, Inc. The "Wi-Fi®" word mark and logos are registered trademarks owned by the Wi-Fi Alliance. Any use of these marks on this website does not imply any affiliation with or endorsement.