



T3 SinglePass StylePlus 1" Algorithmic Straightening and Styling Iron: User Guide

[Home](#) » [T3](#) » T3 SinglePass StylePlus 1" Algorithmic Straightening and Styling Iron: User Guide

The T3 SinglePass StylePlus 1 Algorithmic Straightening and Styling Iron is a versatile and innovative tool for achieving salon-quality hair styling at home. However, it is important to follow the safety instructions and guidelines provided in the user guide to ensure safe and effective use of the product. The guide includes important safety precautions, maintenance instructions, and operating instructions for the T3 SinglePass StylePlus 1 Algorithmic Straightening and Styling Iron. The guide also provides information on T3 StylePlus Technology, which automatically tailors the heat setting to your hair texture to protect against heat exposure and deliver one-pass results. Additionally, the guide includes troubleshooting tips and instructions on how to use the product to achieve optimal results. Whether you are looking to straighten, curl, or style your hair, the T3 SinglePass StylePlus 1 Algorithmic Straightening and Styling Iron is a must-have tool for any hair care routine.

Contents [[hide](#)]

- [1 T3 77590 SinglePass StylePlus](#)
- [2 IMPORTANT SAFETY INSTRUCTIONS](#)
- [3 MAINTENANCE INSTRUCTIONS](#)
- [4 OPERATING INSTRUCTIONS](#)
 - [4.1 SELECT HEAT SETTING](#)
- [5 TROUBLESHOOTING](#)
 - [5.1 HOW TO USE YOUR](#)
- [6 T3 LIMITED WARRANTY TERMS & CONDITIONS](#)
- [7 SPECIFICATIONS](#)
- [8 FAQs](#)
- [9 Documents / Resources](#)
- [10 Related Posts](#)



T3 77590 SinglePass StylePlus



IMPORTANT SAFETY INSTRUCTIONS

READ ALL INSTRUCTIONS BEFORE USING When using electrical appliances, especially when children are present, basic safety precautions should always be followed, including the following: **DANGER KEEP AWAY FROM WATER** Electricity and water are a dangerous combination and can cause death by electric shock. Do not allow electrical cords to come into contact with water or other liquids. **ELECTRICAL APPLIANCES ARE ELECTRICALLY LIVE WHEN PLUGGED IN, EVEN IF TURNED OFF.** To reduce the risk of death by electric shock:

1. Always unplug the appliance immediately after using.
2. Do not use while bathing.
3. Do not place or store the appliance where it can fall or be pulled into a bath tub or sink.
4. Do not place in or drop into water or other liquid.
5. If the appliance falls into water, unplug it immediately. Do not reach into the water.

WARNING To reduce the risk of burns, electrocution, fire or injury to persons:

1. An appliance should never be left unattended when plugged in.
2. Close supervision is necessary when this appliance is used on, or near children or individuals with certain disabilities.
3. Use this appliance only for its intended use as described in this manual. Do not use attachments not recommended by the manufacturer.
4. Never operate this appliance if it has a damaged cord or plug, if it is not working properly, or if it has been dropped, damaged, or dropped into water. Return the appliance to a service center for examination and repair.
5. Keep the cord away from heated surfaces. Do not wrap the cord around the appliance.
6. Never use while sleeping.

7. Never insert any object into the styling iron.
 8. Do not use outdoors or operate where aerosol (spray) products are being used or where oxygen is being administered.
 9. Do not use an extension cord with this appliance **DANGER**
 10. This styling iron is hot when in use. Do not let eyes and bare skin touch the heated surfaces.
 11. Do not place the heated styling iron directly on any surface while it is hot or plugged in.
 12. Do not use if the plug is loose in the outlet, as there may be risk of fire, electric shock, electrical shortage and burning.
 13. Make sure to remove the plug from the wall outlet after use.
- Do not use the appliance near a bath tub, washbasin or other vessel filled with water. Never place the appliance in water or any other liquid. **SAVE THESE INSTRUCTIONS**

MAINTENANCE INSTRUCTIONS

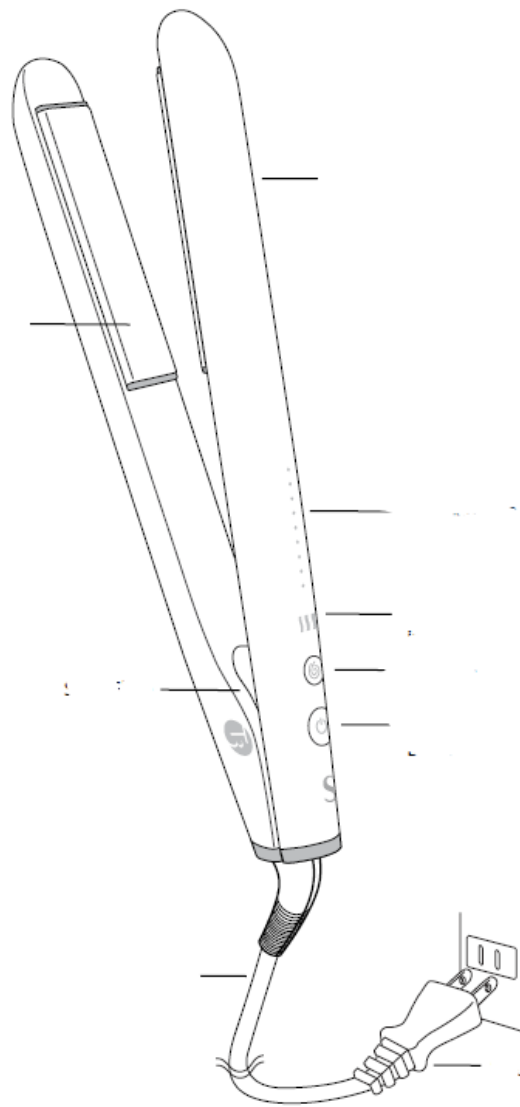
1. Your appliance is virtually maintenance free. It contains no user serviceable parts, and no lubrication is needed.
2. Keep heated surfaces clean and free of dust, dirt & hairspray.
3. If cleaning becomes necessary, disconnect the appliance from the power source and let it cool. Wipe the exterior with a damp cloth.
4. If any malfunction occurs, unplug the appliance, allow it to cool and return it to a service center to repair.
5. Never wrap the cord around the appliance since this will cause the cord to wear prematurely and break. If the cord becomes twisted, untwist it prior to use.
6. Handle the cord carefully for longer life and do not put any stress on the cord where it enters the handle. Avoid jerking, twisting or straining especially at the plug connections. It could cause the cord to fray and possibly break.
7. Do not attempt to repair the appliance yourself.

STORAGE

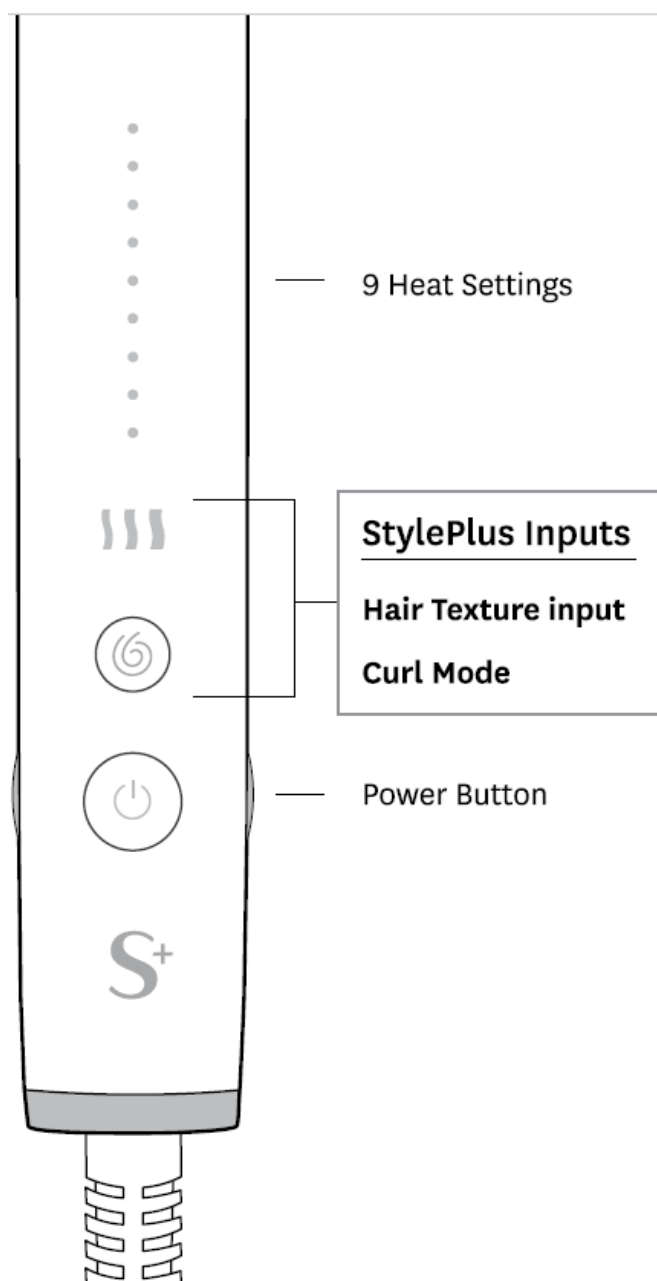
When not in use, your styling iron should be disconnected and stored in a safe, dry location, out of reach of children. Do not wrap the cord around the styling iron. Allow the cord to hang or lie loose and straight at the point of entry into the styling iron.

OPERATING INSTRUCTIONS

This appliance is intended for household use. Use on Alternating Current (60/50Hz) only. This appliance has a polarized plug (one blade is wider than the other). As a safety feature, this plug will fit in a polarized outlet only one way. If the plug does not fit fully in the outlet, reverse the plug. If it still does not fit, contact a qualified electrician. Do not attempt to defeat this safety feature. **WARNING AUTO SHUT-OFF** After approximately one hour, the unit will automatically shut itself off. To reactivate the unit, press and hold the lit Power button until the iron vibrates, and lights start to cascade up. **AUTO WORLD VOLTAGE** This appliance contains a special electronic circuit that automatically converts it for worldwide usage – from 100- 240V, 60/50Hz, 53W. Just plug it into the local power outlet and use it as normal; the styler will automatically adjust to the local current. You may need a plug adapter to allow the plug to fit into the local outlets. **Note:** Tool heat up time may vary based on country and voltage. **OPERATING INSTRUCTIONS T3 SINGLEPASS STYLEPLUS**



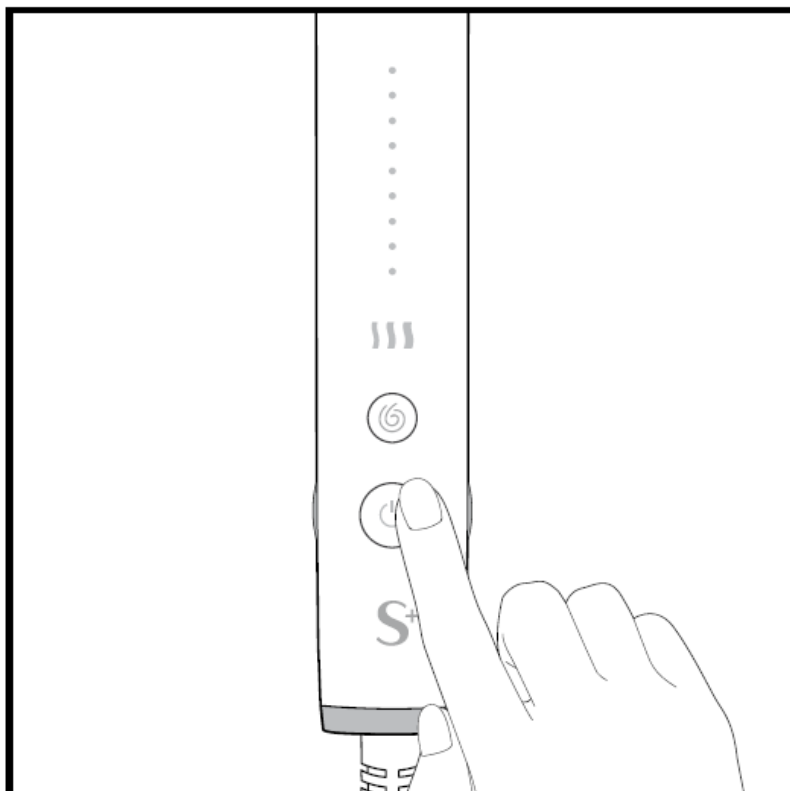
- Heating Plate
- Sleek Glide Hinge
- Cord
- Main Body
- Temperature Panel
- Hair Texture input
- Curl Mode
- Power Button
- Plug
- **CAUTION**
- Do not let the heated plates touch your skin as you may get burnt



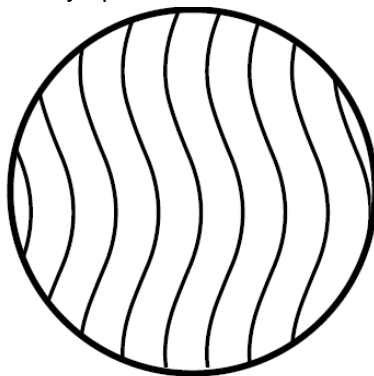
POWER ON Connect the styling iron to a power source. To turn on, press and hold the Power button. The iron will automatically display T3 StylePlus Technology. Hair texture icons will light up and flash repeatedly. See page 11 to input your hair texture. **TURN T3 STYLEPLUS TECHNOLOGY ON/OFF** If you prefer to manually select your temperature, you can switch to Manual Mode. See page 12 for operation in Manual Mode. **POWER OFF** To turn off, press and hold the Power button until lights cascade down. **Note:** On second time use, the iron will immediately begin heat up to your previous heat setting. To adjust settings follow instructions on page 11. **T3 STYLEPLUS TECHNOLOGY** Enter your hair texture input and T3 SinglePass StylePlus will automatically tailor your heat setting to help protect against heat exposure and deliver one-pass results. **IDENTIFYING YOUR HAIR TEXTURE** Run one hair strand between your fingers. Can you barely feel and see the strand? Select Fine hair texture. Can you easily feel the strand and does it glide smoothly through your fingers? Select Medium hair texture. Does the strand feel thick and textured as it runs through your fingers? Select Coarse hair texture. **Note:** If still unsure about your hair texture, select the Medium hair texture. You may need to manually adjust heat as necessary. **INPUT YOUR HAIR TEXTURE** Press the Power button to toggle through texture options. When your texture icon is illuminated, wait 3 seconds to lock in your texture setting. The temperature lights will cascade up as the iron heats up. **READY TO USE** Once the temperature lights turn solid, the iron has reached your unique setting and is ready to use. **Note:** To re-enter texture selection, press the Power and Curl Mode buttons together to unlock hair texture icons. Then, follow the steps above. **CURL MODE** To create curls or waves, press and hold the Curl Mode button. The temperature will decrease by 1 heat setting for optimal styling while limiting heat exposure. Press and hold the Curl Mode button to exit Curl Mode. **MANUAL MODE** You can manually select or adjust your heat settings. **SWITCH TO MANUAL MODE** Double tap the Power button to unlock heat settings. Heat settings will flash with the last used settings on and texture icon lights will turn off.

SELECT HEAT SETTING

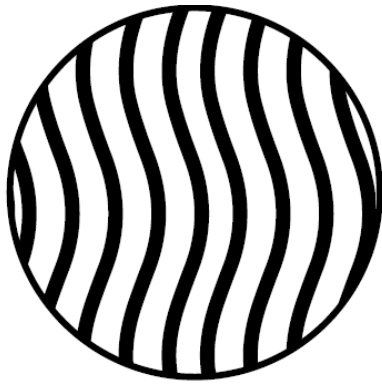
Press the Power button to toggle through heat selections.



LOCK YOUR HEAT SETTING Once your desired heat selection is illuminated, wait 3 seconds to lock in your heat setting. Lights will cascade up as T3 SinglePass StylePlus heats up. **READY TO USE** Once the lights turn solid, the iron has reached your heat selection and is ready to use. **TEMPERATURE GUIDE** For optimal results, select the right heat setting for your hair type. See temperature guide below to determine your heat setting. We suggest starting at a lower setting and building your way up as needed.



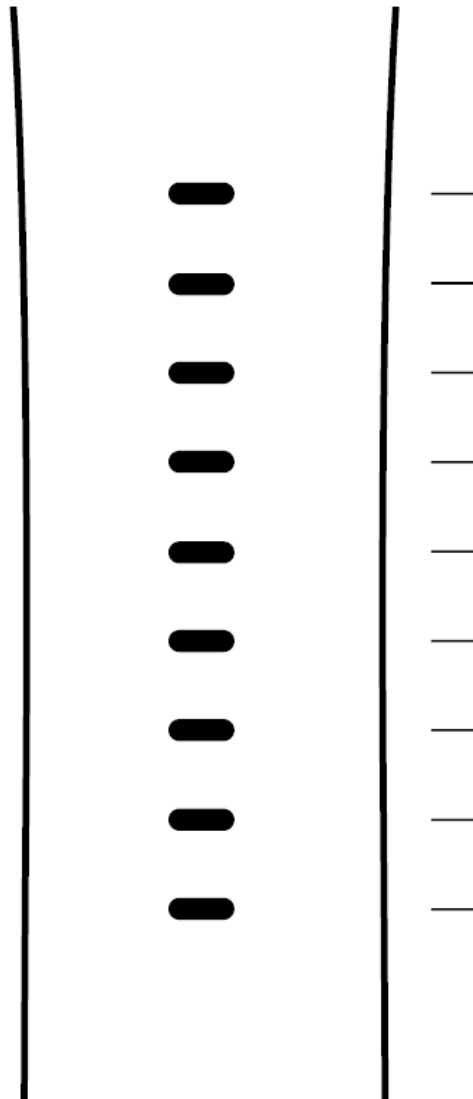
Fine — #1-4



Medium — #5-6



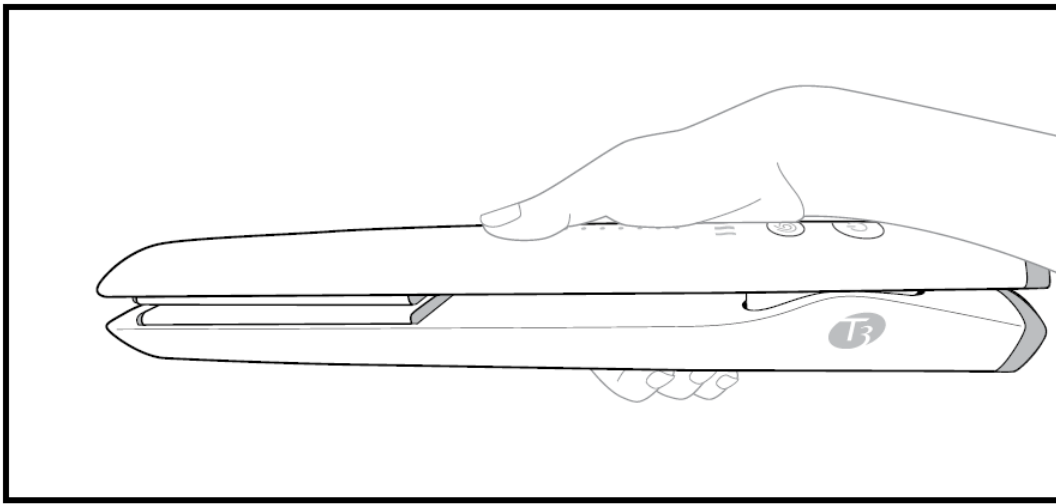
Coarse — #7-9



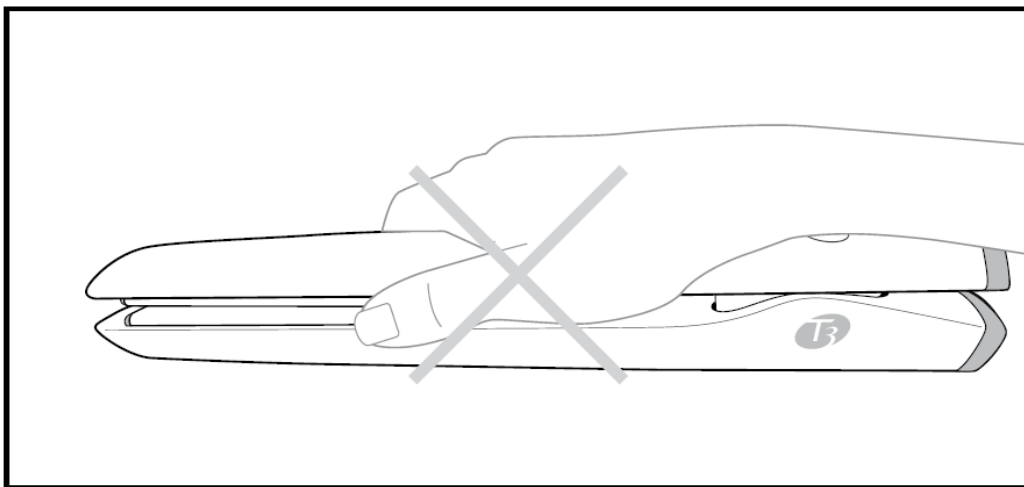
- 9 (410°F / 210°C)
- 8 (400°F / 205°C)
- 7 (390°F / 199°C)
- 6 (370°F / 188°C)
- 5 (350°F / 177°C)
- 4 (325°F / 163°C)
- 3 (300°F / 149°C)
- 2 (280°F / 138°C)
- 1 (260°F / 127°C)
- If your hair is color-treated or damaged, reduce temperature by 1-2 heat settings for optimal results.

RESET To reset the iron to original factory settings, press and hold the Power button and Curl Mode button until the iron turns off. Follow the instructions on page 11 to set your new settings. **T3 THERMATOUCH™**

TECHNOLOGY Advanced insulation technology makes the arms of the styling iron more comfortable to hold. However, as any other heat styling tool, this styling iron must be used with caution. Avoid touching the side of the styling iron arms, where the plates are hot. **CORRECT**



- **INCORRECT**

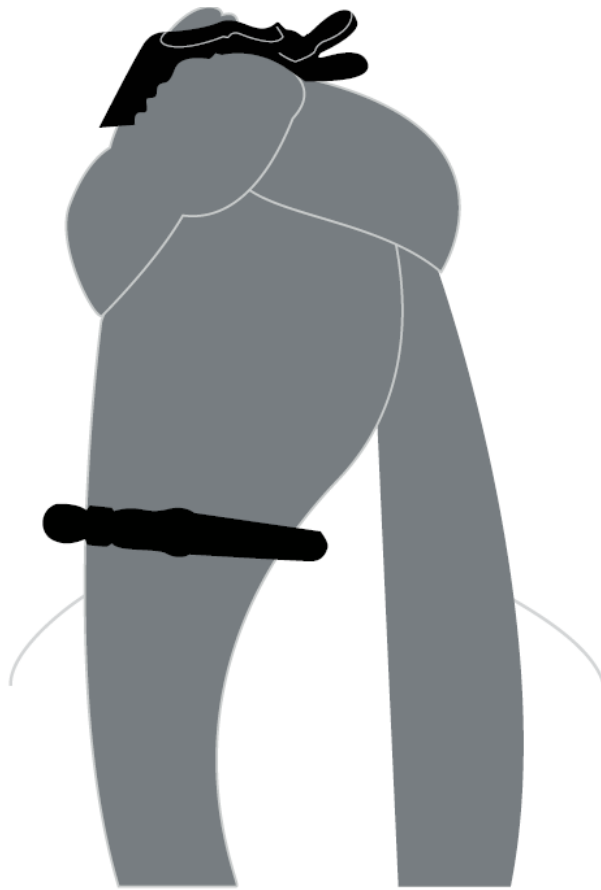


TROUBLESHOOTING

If you experience accidental activation: Keep your fingers away from buttons to avoid unintended interface activation during styling. **If interface is not responsive:** Ensure you are pressing the intended button. If contact is made with more than one button at the same time, the tool may not respond. If tool is still unresponsive, unplug, wait 15 seconds and plug in again. **If your tool won't turn on:** Ensure you are holding the Power button for a full 3 seconds. If tool still will not turn on, unplug, wait 15 seconds, and plug in again. **If your tool won't turn off:** Ensure you are holding the Power button for a full 3 seconds. If tool still will not turn off, unplug, wait 15 seconds, and plug in again. If you continue to experience issues after trouble shooting your T3 SinglePass StylePlus , please contact customer service at [T3Micro.com/contact-us](https://www.t3micro.com/contact-us). use iron with caution and select settings with caution. There are individual variations in how hair responds to heat. The optimal selection of settings may vary from person to person. In the first use, it is best to test at a low heat and for a short duration. If there are any adverse or unexpected effects, stop use of the iron immediately.

HOW TO USE YOUR

Start with dry, detangled hair. Twist the top part of your hair out of the way and secure it with a sectioning clip. Gather the rest of your hair into another clip, leaving a 1-2" section out to begin styling.



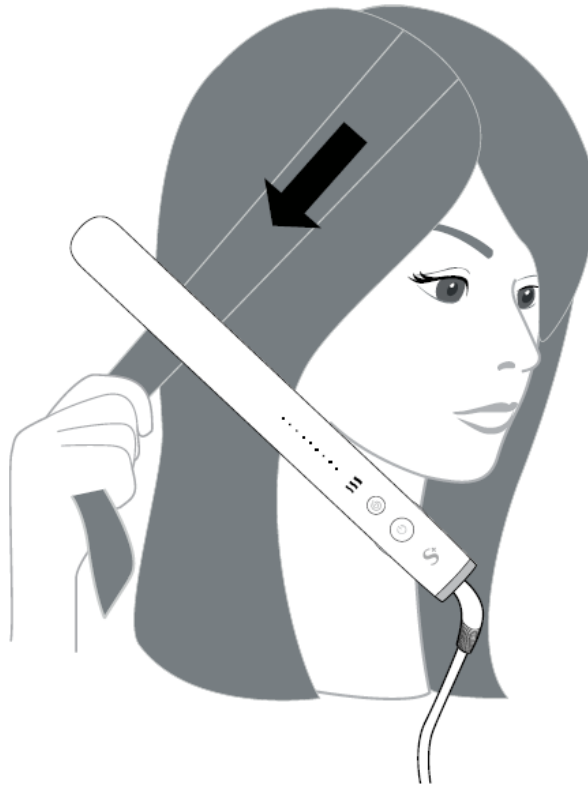
- To avoid kinks, style your hair L using thin, horizontal sections so the iron can be positioned close to the roots.



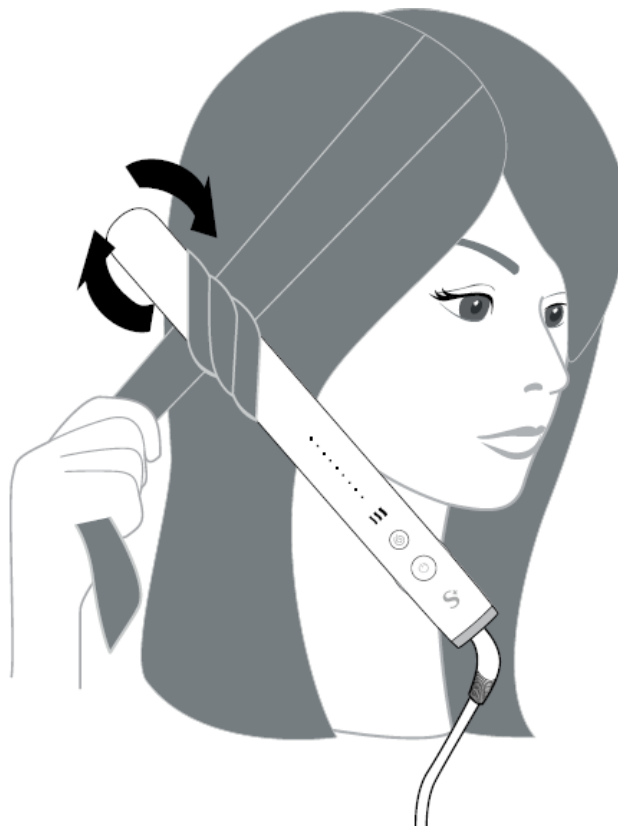
Expert Tips Slow down for perfect results in a single glide:

- Fine hair: Glide iron at 2-3 inches per second
- Medium Hair: Glide iron at 2 inches per second

- Coarse Hair: Glide iron at 1 inch per second
- Glide iron through in the direction of hair growth at a speed slower than when brushing hair. Continue working with thin sections, repeating steps 2 and 3 until hair is fully styled.



- **Curl Mode:** Rotate iron away from the face and guide iron through in the direction of hair growth at a speed slower than when brushing hair. Continue working with 1-2" sections until hair is fully styled.



T3 Micro will repair or replace (at our option) T3 products for twenty-four (24) months from the date of purchase if they are defective in workmanship or materials. This limited warranty does not cover

1. damage due to misuse or abuse, such as incorrect voltage supply, dropping, or failure to follow enclosed instructions or
2. tampering, such as repair or attempt to repair. To obtain service under this warranty, please visit [T3Micro.com/warranty-info](https://www.T3Micro.com/warranty-info) to submit a warranty claim, or call us at (866) 376-8880 to receive detailed instructions. You will be required to provide proof of purchase. THIS LIMITED WARRANTY IS ONLY VALID IF THE PRODUCT IS PURCHASED FROM AN AUTHORIZED SELLER OF T3 GOODS AND IF THE ORIGINAL SERIAL NUMBER ON THE PRODUCT HAS NOT BEEN REMOVED OR OTHERWISE TAMPERED WITH. Any implied warranties, obligations, or liabilities, including but not limited to the implied warranty of merchantability and fitness for a particular purpose, shall be limited in duration to the 24 month duration of this written limited warranty. Some states do not allow a limitation on how long an implied warranty lasts, so the above limitation may not apply to you. IN NO EVENT SHALL T3 BE LIABLE FOR ANY SPECIAL, INCIDENTAL, OR CONSEQUENTIAL DAMAGES FOR BREACH OF THIS OR ANY OTHER WARRANTY, EXPRESS OR IMPLIED. Visit www.T3Micro.com/customer-service to complete your warranty registration.

SPECIFICATIONS

Product Name	T3 SinglePass StylePlus 1" Algorithmic Straightening and Styling Iron
Important Safety Instructions	Read all instructions before using
Auto Shut-Off	After approximately one hour, the unit will automatically shut itself off
Auto World Voltage	Contains a special electronic circuit that automatically converts it for worldwide usage – from 100-240V, 60/50Hz, 53W
Maintenance Instructions	Your appliance is virtually maintenance free. It contains no user serviceable parts, and no lubrication is needed. Keep heated surfaces clean and free of dust, dirt & hairspray. If cleaning becomes necessary, disconnect the appliance from the power source and let it cool. Wipe the exterior with a damp cloth. If any malfunction occurs, unplug the appliance, allow it to cool and return it to a service center to repair. Never wrap the cord around the appliance since this will cause the cord to wear prematurely and break. If the cord becomes twisted, untwist it prior to use. Handle the cord carefully for longer life and do not put any stress on the cord where it enters the handle. Avoid jerking, twisting or straining especially at the plug connections. It could cause the cord to fray and possibly break. Do not attempt to repair the appliance yourself.

Storage	When not in use, your styling iron should be disconnected and stored in a safe, dry location, out of reach of children. Do not wrap the cord around the styling iron. Allow the cord to hang or lie loose and straight at the point of entry into the styling iron.
Operating Instructions	This appliance is intended for household use. Use on Alternating Current (60/50Hz) only. This appliance has a polarized plug (one blade is wider than the other). As a safety feature, this plug will fit in a polarized outlet only one way. If the plug does not fit fully in the outlet, reverse the plug. If it still does not fit, contact a qualified electrician. Do not attempt to defeat this safety feature.
T3 StylePlus Technology	Automatically tailors the heat setting to your hair texture to protect against heat exposure and deliver one-pass results
Curl Mode	Decreases temperature by 1 heat setting for optimal styling while limiting heat exposure
Manual Mode	Allows for manual selection or adjustment of heat settings
Temperature Guide	For optimal results, select the right heat setting for your hair type. See temperature guide below to determine your heat setting. We suggest starting at a lower setting and building your way up as needed. 10 (410°F / 210°C), 8 (400°F / 205°C), 7 (390°F / 199°C), 6 (370°F / 188°C), 5 (350°F / 177°C), 4 (325°F / 163°C), 3 (300°F / 149°C), 2 (280°F / 138°C), 1 (260°F / 127°C). If your hair is color-treated or damaged, reduce temperature by 1-2 heat settings for optimal results.
T3 Thermatouch Technology	Advanced insulation technology makes the arms of the styling iron more comfortable to hold. However, as any other heat styling tool, this styling iron must be used with caution. Avoid touching the side of the styling iron arms, where the plates are hot.
Troubleshooting	If you experience accidental activation: Keep your fingers away from buttons to avoid unintended interface activation during styling. If interface is not responsive: wait 15 seconds and plug in again. If your tool won't turn on:

FAQS

What should I do if the styling iron falls into water?

Unplug it immediately and do not reach into the water.

Can I use an extension cord with the T3 SinglePass StylePlus?

No, you should not use an extension cord with this appliance.

How do I clean the styling iron?

Disconnect the appliance from the power source and let it cool. Wipe the exterior with a damp cloth.

What should I do if the cord becomes twisted?

Untwist it prior to use to avoid premature wear and breakage.

Can I repair the appliance myself?

No, you should not attempt to repair the appliance yourself.

How should I store the styling iron when not in use?

Disconnect it and store it in a safe, dry location out of reach of children. Do not wrap the cord around the styling iron.

How do I turn on the styling iron?

Connect it to a power source and press and hold the Power button.

How do I input my hair texture for the T3 StylePlus Technology?

Press the Power button to toggle through texture options and wait 3 seconds to lock in your texture setting.


Can I manually select my temperature settings?

Yes, you can switch to Manual Mode to manually select or adjust your heat settings.

What should I do if my tool won't turn on?

Check that it is connected to a power source and try plugging it in again after waiting 15 seconds.

Documents / Resources

 T3 SINGLEPASS STYLEPLUS User Guide Guide de l'utilisateur Manual del usuario Professional T3 algorithmic straightening and styling iron Fer à lisser et à lisseur algorithmique professionnel de 25 mm Plancha de alisado y peinado algorítmica profesional de 25 mm Model No./N° de modelo/N° de modelo 77590, 77590-CA, 77591, 77592, 77593	T3 77590 SinglePass StylePlus [pdf] User Guide 77590 SinglePass StylePlus, 77590, SinglePass StylePlus
--	---