



T3 77582 Edge Heated Smoothing and Styling Brush User Guide

[Home](#) » [T3](#) » T3 77582 Edge Heated Smoothing and Styling Brush User Guide 

T3 77582 Edge Heated Smoothing and Styling Brush User Guide



Contents

- [1 IMPORTANT SAFETY INSTRUCTIONS](#)
- [2 OPERATING INSTRUCTIONS](#)
- [3 HOW TO USE YOUR T3 EDGE](#)
- [4 T3 LIMITED WARRANTY TERMS & CONDITIONS](#)
- [5 Documents / Resources](#)
- [6 Related Posts](#)

IMPORTANT SAFETY INSTRUCTIONS

READ ALL INSTRUCTIONS BEFORE USING

When using electrical appliances, especially when children are present basic safety precautions should always be

followed. including the following:



DANGER
KEEP AWAY FROM WATER

Electricity and water are a dangerous combination and can cause death by electric shock. Do not allow electrical cords to come into contact with water or other liquids.

ELECTRICAL APPLIANCES ARE ELECTRICALLY LIVE WHEN PLUGGED IN, EVEN IF TURNED OFF.

To reduce the risk of death by electric shock:

1. Always unplug the appliance immediately after using.
2. Do not use while bathing.
3. Do not place or store the appliance where it can fall or be pulled into a bath tub or sink.
4. Do not place in or drop into water or other liquid.
5. If the appliance falls into water, unplug it immediately. Do not reach into the water.



WARNING
To reduce the risk of burns, electrocution, fire or injury to persons:

1. An appliance should never be left unattended when plugged in.
2. Close supervision is necessary when this appliance is used on, or near children or individuals with certain disabilities.
3. Use this appliance only for its intended use as described in this manual. Do not use attachments not recommended by the manufacturer.
4. Never operate this appliance if it has a damaged cord or plug, if it is not working properly, or if it has been dropped, damaged, or dropped into water. Return the appliance to a service center for examination and repair.
5. Keep the cord away from heated surfaces. Do not wrap the cord around the appliance.
6. Never use while sleeping.
7. Never insert any object into the styling iron.
8. Do not use outdoors or operate where aerosol (spray) products are being used or where oxygen is being administered.
9. Do not use an extension cord with this appliance.
10. This styling iron is hot when in use. Do not let eyes and bare skin touch the heated surfaces.
11. Do not place the heated styling iron directly on any surface while it is hot or plugged in.
12. Do not use if the plug is loose in the outlet, as there may be risk of fire, electric shock, electrical shortage and burning.
13. Make sure to remove the plug from the wall outlet after use.
14. The appliance is not intended for use by persons (including children) with reduced physical, sensory or mental capabilities, or lack of experience or knowledge, unless they have been given supervision or instruction concerning use of the appliance by a person responsible for their safety.
15. Children should be supervised to ensure that they do not play with the appliance.
16. If the supply cord is damaged, it must be replaced by the manufacturer, its service agent or similarly qualified

persons in order to avoid a hazard.



Do not use the appliance near a bath tub, wash basin or other vessel filled with water. Never place the appliance in water or any other liquid.

SAVE THESE INSTRUCTIONS

1. Your appliance is virtually maintenance free. It contains no user serviceable parts, and no lubrication is needed.
2. Keep heated surfaces clean and free of dust, dirt & hairspray.
3. If cleaning becomes necessary, disconnect the appliance from the power source and let it cool. Wipe the exterior with a damp cloth.
4. If any malfunction occurs, unplug the appliance, allow it to cool and return it to a service center to repair.
5. Never wrap the cord around the appliance since this will cause the cord to wear prematurely and break. If the cord becomes twisted, untwist it prior to use.
6. Handle the cord carefully for longer life and do not put any stress on the cord where it enters the handle. Avoid jerking, twisting or straining especially at the plug connections. It could cause the cord to fray and possibly break.
7. Do not attempt to repair the appliance yourself.
8. Any other servicing should be performed by an authorized service representative.

STORAGE

When not in use your styling iron should be disconnected and stored in a safe, dry location, out of reach of children. Do not wrap the cord around the styling iron. Allow the cord to hang or lie loose and straight at the point of entry into the styling iron.

SERVICING OF DOUBLE-INSULATED APPLIANCES

In a double-insulated appliance, two systems of insulation are provided instead of grounding. No grounding means is provided on a double-insulated appliance, nor should a means for grounding be added to the appliance.

Servicing a double-insulated appliance requires extreme care and knowledge of the system, and should be done only by qualified service personnel.

Replacement parts for double-insulated appliance must be identical to the parts they replace. A double-insulated appliance is marked with the words "DOUBLE INSULATION" or "DOUBLE INSULATED". The symbol (square within a square) may also be marked on the appliance.

OPERATING INSTRUCTIONS

THIS APPLIANCE IS INTENDED FOR HOUSEHOLD USE. USE ON ALTERNATING CURRENT (50Hz-60Hz) ONLY.

This appliance has a polarized plug (one blade is wider than the other). As a safety feature, this plug will fit in a polarized outlet only one way. If the plug does not fit fully in the outlet, reverse the plug. If it still does not fit, contact a qualified electrician. Do not attempt to defeat this safety feature.

WARNING

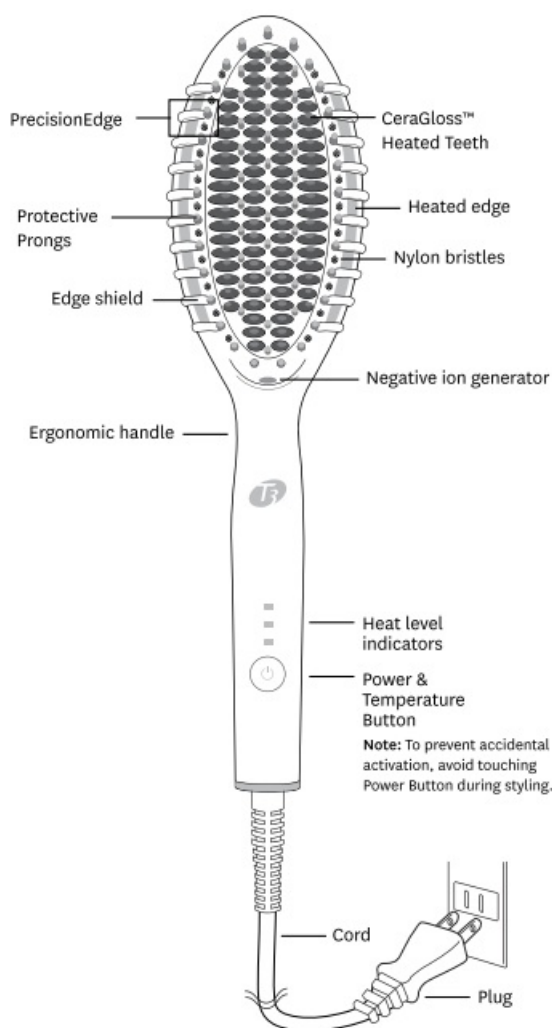
AUTO SHUT-OFF

After approximately one hour, the unit will auto-matically shut itself off. To reactivate the unit, press the Power & Temperature Button.

AUTO WORLD VOLTAGE

This appliance contains a special electronic circuit that automatically converts it for worldwide usage – from 100V-240V, 50Hz-60Hz, 70W. Just plug it into the local power outlet and use it as normal; the styler will automatically adjust to the local current. You may need a plug adapter to allow the plug to fit into the local outlets.

Note: Tool heat up time may vary based on country and voltage.

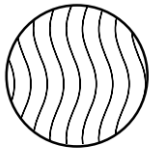


CAUTION

Do not let any heated surface, including the PrecisionEdge, touch your skin as you may get burnt.

TEMPERATURE GUIDE

For optimal results, select the right heat setting for your hair type. See temperature guide below to determine your heat setting. We suggest starting at a lower setting and building your way up as needed.*



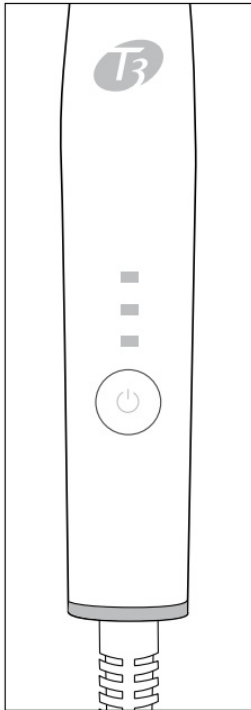
Straight — #1



Wavy — #2

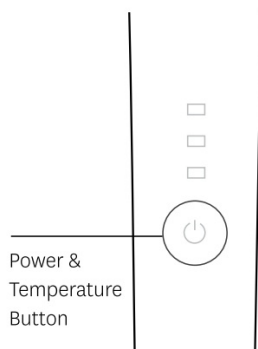


Curly — #3

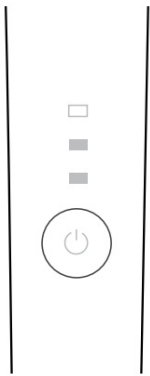


- _3 (410°F/210°C)
- _2 (370°F/188°C)
- _1 (330°F/166°C)

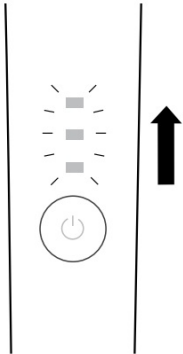
1. Press the Power & Temperature Button to turn the iron on. Lights will cascade up, then turn solid when the unit is ready to use. Note: To prevent accidental activation, avoid touching Power Button during styling.



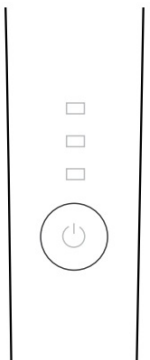
2. To change the temperature, click the Power & Temperature Button. Then continue to click to cycle through to your exact temperature setting.



3. Release the Power & Temperature Button after selecting your desired temperature. The temperature lights will cascade up or down to your selected temperature. Lights will turn solid when the iron is ready to use.



4. To turn off the iron, press and hold the Power & Temperature Button until the lights turn off.

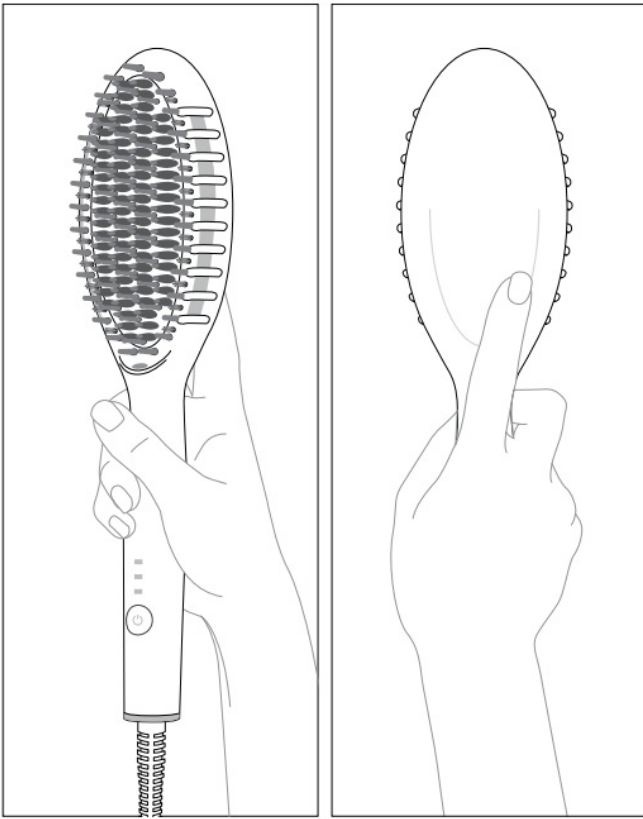


* See Temperature Guide on page 11 for recommended settings.

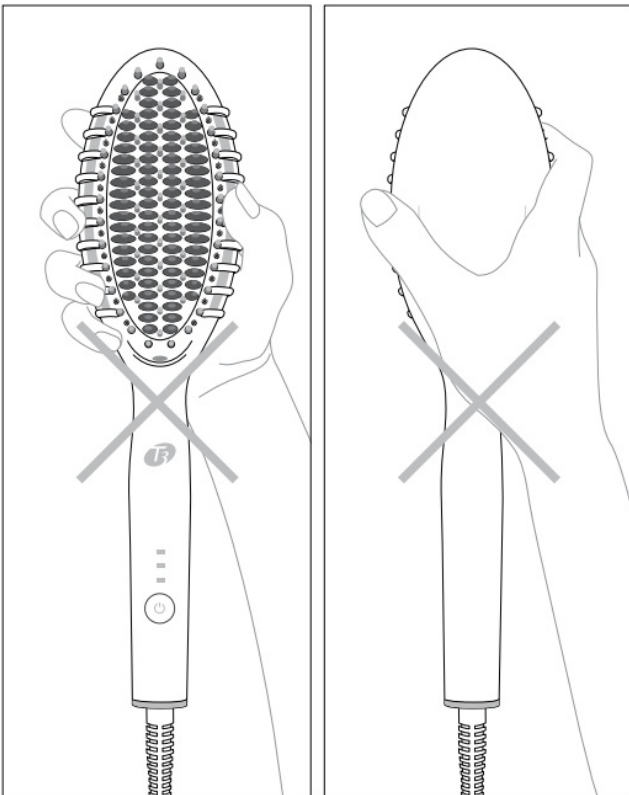
T3 THERMATOUCH® TECHNOLOGY

Advanced insulation technology makes the back of the heated brush head more comfortable to hold. However, this heated brush must be used with caution. Avoid touching the sides of the heated brush head, including the PrecisionEdge, where the surface is hot.

CORRECT

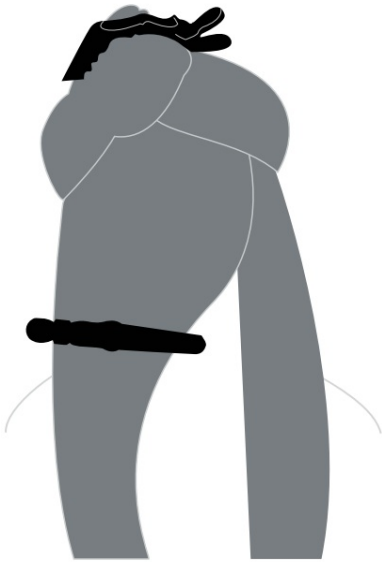


INCORRECT



HOW TO USE YOUR T3 EDGE

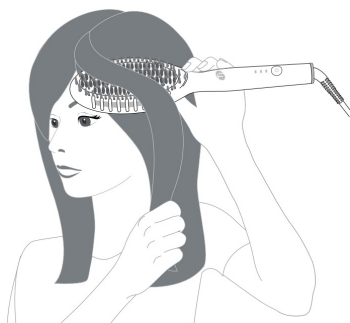
1. Start with dry, detangled hair. Twist the top part of your hair out of the way and secure it with a sectioning clip. Gather the rest of your hair into another clip, leaving a 2" section out to begin styling.



2. Begin by brushing the section from root to tip, gliding slowly in the direction of hair growth. The heated teeth should be visible through the hair. If you cannot see heated teeth through hair, your section may be too large. Continue working with 2' sections until hair is fully styled.



3. Turn the brush slightly to use the heated edge for smoothing and adding volume at the roots. When nearing the ends, turn the brush slightly, as the heated edge will help create shape and bend at the ends.



Expert Tip:

While brushing, hold the end of your section with your free hand to increase tension.

Hold the brush underneath the strands or from above for comfortable styling.

T3 LIMITED WARRANTY TERMS & CONDITIONS

T3 Micro will repair or replace (at our option) T3 products for twenty-four (24) months from the date of purchase if they are defective in workmanship or materials. This limited warranty does not cover

1. damage due to misuse or abuse, such as incorrect voltage supply, dropping, or failure to follow enclosed instructions or
2. tampering, such as repair or attempt to repair.

TO obtain service under this warranty, please visit www.T3Micro.Com/warranty-info to submit a warranty claim, or call us at (866) 376-8880 to receive detailed instructions. You will be required to provide proof of purchase.

THIS LIMITED WARRANTY IS ONLY VALID IF THE PRODUCT IS PURCHASED FROM AN AUTHORIZED SELLER OF T3 GOODS AND IF THE ORIGINAL SERIAL NUMBER ON THE PRODUCT HAS NOT BEEN REMOVED OR OTHERWISE TAMPERED WITH.

Any implied warranties, obligations, or liabilities, including but not limited to the implied warranty of merchantability and fitness for a particular purpose, shall be limited in duration to the 24 month duration of this written limited warranty. Some states do not allow a limitation on how long an implied warranty lasts, so the above limitation may not apply to you.

IN NO EVENT SHALL T3 BE LIABLE FOR ANY SPECIAL, INCIDENTAL, OR CONSEQUENTIAL DAMAGES FOR BREACH OF THIS OR ANY OTHER WARRANTY, EXPRESS OR IMPLIED.

Visit www.T3Micro.com/customer-service to complete your warranty registration.

SUPPLIER'S DECLARATION OF CONFORMITY 47 CFR § 2.1077 COMPLIANCE INFORMATION

Model Name: T3 Edge Model Description. Heated smoothing 8 styling brush **Model Number:** 77582
Responsible Party in USA: T3 Micro, Inc. 880 El Segundo Ca 90245 866.376.8880
Test Report Number: 21090203HKG-001

This equipment has been tested and found to comply with the limits for a Class 8 digital device, pursuant to Part 15 of the FCC Rules. These limits are designed to provide reasonable protection against harmful interference in a residential installation. This equipment generates, uses and can radiate radio frequency energy and, if not installed and used in accordance with the instructions, may cause harmful interference to radio communications. However, there is no guarantee that interference will not occur in a particular installation.

If this equipment does cause harmful interference to radio or television reception, which can be determined by turning the equipment off and on, the user is encouraged to try to correct the interference by one or more of the following measures:

- Reorient or relocate the receiving antenna.
- Increase the separation between the equipment and receiver.
- Connect the equipment into an outlet on a circuit different from that to which the receiver is connected.
- Consult the dealer or an experienced radio/TV technician for help.

FCC Compliance Statement

This device complies with Part 15 or the FCC Rules. Operation is subject to the following two Conditions: (1) this device may not Cause harmful interference, and (2) this device must accept any interference received. including interference that may cause undesired operation.

NO change or modification to this equipment shall be made without the express written approval of the

“responsible party” as defined in the FCC’s rules



MODEL NO. 77582,77583,77584,77585,77586,77587

SPECIFICATIONS

Operating Voltage 100-240V, 50Hz-60Hz, 70W

Power Consumption: 70W

T3 Micro, Inc.
El Segundo, CA USA. Made in China




WARNING

Do not use the appliance near a shower, bathtub, washbasin or other vessel filled with water. Never place the appliance in water or any other liquid.



Documents / Resources

 T3 EDGE <small>User Guide Guide utilisateur Manual del usuario</small> <small>Heated smoothing & styling brush Lissage chauffé et à sec sans chaleur Cepillo alisador con alisado y peinado</small> <small>Model No./N° de modelo/N° de modelo/TITEL/TITEL/TITEL T382, T383, T384</small>	<p>T3 77582 Edge Heated Smoothing and Styling Brush [pdf] User Guide 77585, 77583, 77584, 77585, 77586, 77587, Edge Heated Smoothing and Styling Brush, 77582 Edge Heated Smoothing and Styling Brush</p>
--	---