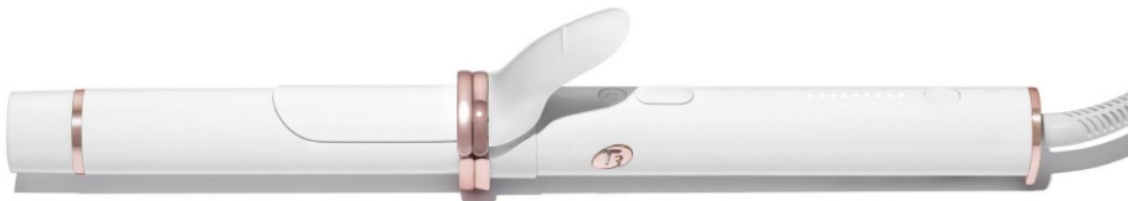




T3 76680 CurlWrap 1.25 Inch Automatic Rotating Curling Iron User Guide

[Home](#) » [T3](#) » T3 76680 CurlWrap 1.25 Inch Automatic Rotating Curling Iron User Guide 

T3 76680 CurlWrap 1.25 Inch Automatic Rotating Curling Iron User Guide



Contents

- [1 IMPORTANT SAFETY INSTRUCTIONS](#)
- [2 MAINTENANCE INSTRUCTIONS](#)
- [3 OPERATING INSTRUCTIONS](#)
- [4 HOW TO USE YOUR](#)
- [5 T3 LIMITED WARRANTY TERMS & CONDITIONS](#)
- [6 Documents / Resources](#)
 - [6.1 References](#)
- [7 Related Posts](#)

IMPORTANT SAFETY INSTRUCTIONS

READ ALL INSTRUCTIONS BEFORE USING

When using electrical appliances, especially when children are present, basic safety precautions should always be followed, including the following



DANGER

KEEP AWAY FROM WATER

Electricity and water are a dangerous combination and can cause death by electric shock. Do not allow electrical cords to come into contact with water or other liquids.

ELECTRICAL APPLIANCES ARE ELECTRICALLY LIVE WHEN PLUGGED IN, EVEN IF TURNED OFF.

To reduce the risk of death by electric shock:

1. Always unplug the appliance immediately after using.
2. Do not use while bathing.
3. Do not place or store the appliance where it can fall or be pulled into a bath tub or sink.
4. Do not place in or drop into water or other liquid,
5. If the appliance falls into water, unplug it immediately. Do not reach into the water.



WARNING

To reduce the risk of burns, electrocution, fire or injury to persons:

1. An appliance should never be left unattended when plugged in
2. Close supervision is necessary when this appliance is used on, or near children or individuals with certain disabilities.
3. Use this appliance only for its intended use as described in this manual. Do not use attachments not recommended by the manufacturer.
4. Never operate this appliance if it has a damaged cord or plug, if it is not working properly, or if it has been dropped, damaged, or dropped into water. Return the appliance to a service center for examination and repair.
5. Keep the cord away from heated surfaces. Do not wrap the cord around the appliance.
6. Never use while sleeping.
7. Never insert any object into the styling iron.
8. Do not use outdoors or operate where aerosol (spray) products are being used or where oxygen is being administered.
9. Do not use an extension cord with this appliance.
10. This styling iron is hot when in use. Do not let eyes and bare skin touch the heated surfaces.
11. Do not place the heated styling iron directly on any surface while it is hot or plugged in.
12. Do not use if the plug is loose in the outlet, as there may be risk of fire, electric shock, electrical shortage and burning.
13. Make sure to remove the plug from the wall outlet after use.
14. When the appliance is used in a bathroom, unplug it after use since the proximity of water presents a hazard even when the appliance is switched off.
15. For additional protection, the installation of a residual current device (RCD) having a rated residual operating current not exceeding 30 mA is advisable in the electrical circuit supplying the bathroom. Ask your installer for advice.



Do not use the appliance near a bath tub, washbasin or other vessel filled with water. Never place the appliance in water or any other liquid.

SAVE THESE INSTRUCTIONS

MAINTENANCE INSTRUCTIONS

1. Your appliance is virtually maintenance free. It contains no user serviceable parts, and no lubrication is needed.
2. Keep heated surfaces clean and free of dust, dirt and hairspray.
3. If cleaning becomes necessary, disconnect the appliance from the power source and let it cool. Wipe the exterior with a damp cloth.
4. If any malfunction occurs, unplug the appliance, allow it to cool and return it to a service center to repair.
5. Never wrap the cord around the appliance since this will cause the cord to wear prematurely and break. If the cord becomes twisted, untwist it prior to use.
6. Handle the cord carefully for longer life and do not put any stress on the cord where it enters the handle. Avoid jerking, twisting or straining especially at the plug connections. It could cause the cord to fray and possibly break.
7. Do not attempt to repair the appliance yourself.

STORAGE

When not in use, your styling iron should be disconnected and stored in a safe, dry location, out of reach of children. Do not wrap the cord around the styling iron. Allow the cord to hang or lie loose and straight at the point of entry into the styling iron.

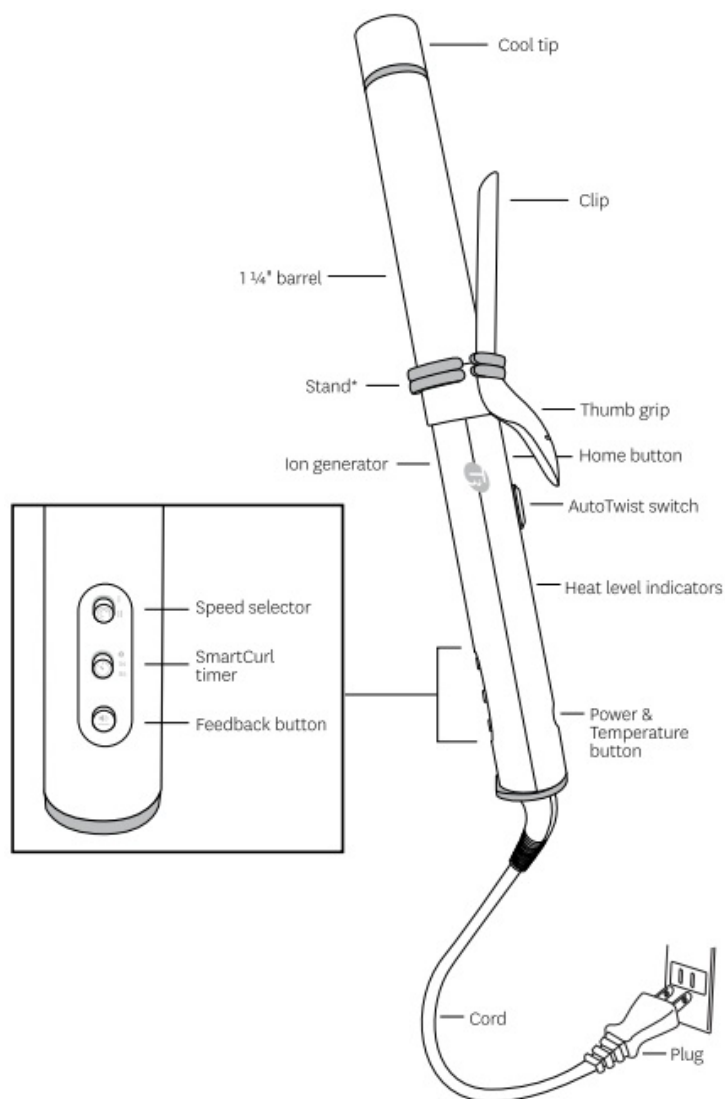
SERVICING OF DOUBLE-INSULATED APPLIANCES

In a double-insulated appliance, two systems of insulation are provided instead of earthing. No earthing means is provided on a double-insulated appliance, nor should a means for earthing be added to the appliance.

Servicing a double-insulated appliance requires extreme care and knowledge of the system, and should be done only by qualified service personnel.

Replacement parts for double-insulated appliances must be identical to the parts they replace. A double-insulated appliance is marked with the words "DOUBLE INSULATION" or "DOUBLE INSULATED" The symbol (square within a square) may also be marked on the appliance.

OPERATING INSTRUCTIONS



This appliance is intended for household use. Use on Alternating Current (50/60 Hz) only.

This appliance has a polarized plug (one blade is wider than the other). As a safety feature, this plug will fit in a polarized outlet only one way. If the plug does not fit fully in the outlet, reverse the plug. If it still does not fit, contact a qualified electrician. Do not attempt to defeat this safety feature.



WARNING

AUTO SHUT-OFF

After approximately one hour, the unit will automatically shut itself off. To reactivate the unit, press and hold the lit Power Button until the iron vibrates, and lights start to cascade up.

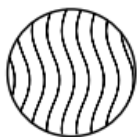
AUTO WORLD VOLTAGE

This appliance contains a special electronic circuit that automatically converts it for worldwide usage from 100 to 240 volts AC 50/60 Hz. Just plug it into the local power outlet and use it as normal; the styler will automatically adjust to the local current. You may need a plug adapter to allow the plug to fit into the local outlets

Note: Tool heat up time may vary based on country and voltage

TEMPERATURE GUIDE

For optimal results, select the right heat setting for your hair type. See temperature guide below to determine your heat setting. We suggest starting at a lower setting and building your way up as needed.



Fine — #1-4



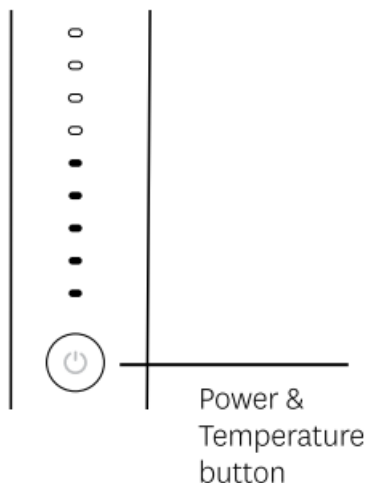
Medium — #5-6



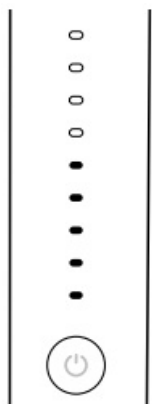
Coarse — #7-9

1. Press the Power & Temperature button to turn the iron on. Lights will cascade up, then turn solid when the unit is ready to use.

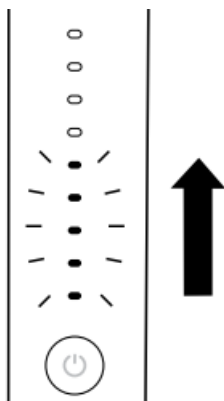
Note: Each time you turn on the unit will heat up to the last set temperature.



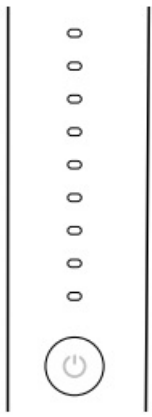
2. To change the temperature, double-tap the Power & Temperature button. Then continue to click to cycle through to your exact temperature setting.



3. Release the Power & Temperature button after selecting your desired temperature. The temperature lights will cascade up or down to your selected temperature. Lights will turn solid when the iron is ready to use.



4. To turn off the iron, press and hold the Power & Temperature button until the lights turn off.



Barrel Rotation Speed Settings

To adjust barrel rotation speed, slide the Speed selector to low at high

Note: We recommend starting at low speed and working your way up as needed



SmartCurl Timer Settings

To adjust timer settings, slide the SmartCurl timer to 5 or 8 seconds, To turn timer and feedback settings off, slide to D

Note: We recommend starting with the 5-second timer and working your way up



Sensory Feedback Settings

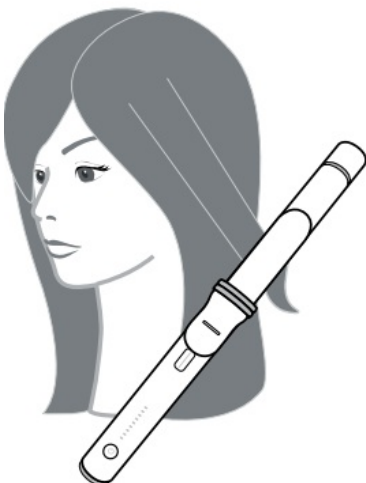
To unlock feedback settings, double-tap the Feedback button. Then, tap the Feedback button for sound only. Tap again for vibration only. Tap a third time to activate both sound and vibration.

Training Mode

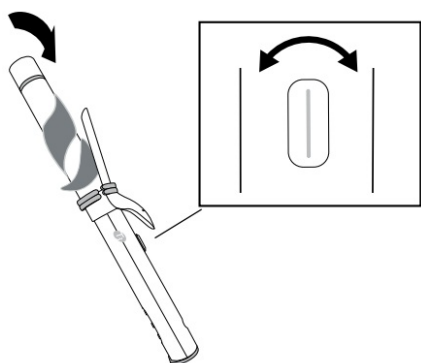
Training Mode allows you to test barrel rotation direction and speed without using heat. To activate Training Mode, ensure tool is powered off Press and hold the Power button and Feedback button simultaneously for 3 seconds. All 9 heat settings will flash 3 times before landing on heat settings. To exit Training Mode, press and hold the Power button and feedback button again for 3 seconds

HOW TO USE YOUR

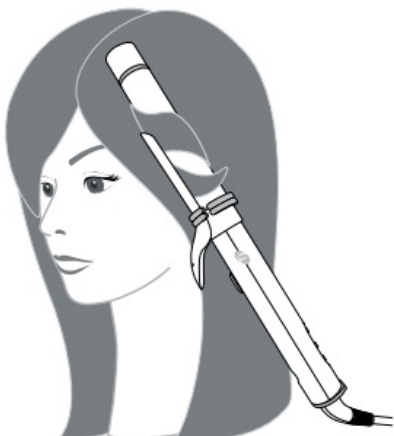
1. Always begin with dry hair insert the tip of a 1-2 section into the cap. For optimal results position hair in the upper half of the cap



2. Slide the AutoTwist switch to the Soft or right to guide the barrel rotation toward or away from your face. Hold the switch until hair is fully wrapped around the barrel, then release the switch to activate the time



3. Hold the iron in place until the timer signals, then carefully open the clip and release the hair. For looser curls, tug lightly on the styled section before allowing to cool.



4. Ensure all hair has been cleared from the clip, then press the Home button to reset the barrel. Repeat until hair is fully styled



T3 LIMITED WARRANTY TERMS & CONDITIONS

T3 Micro will repair or replace (at our option) T3 products for twenty- four (24) months from the date of purchase if they are defective in workmanship or materials. This limited warranty does not cover (1) damage due to misuse or abuse, such as incorrect voltage supply, dropping, or failure to follow enclosed instructions or (2) tampering. such as repair or attempt to repair. To obtain service under this warranty, please visit www.T3Micro.com/warranty-info to submit a warranty claim, or call us at (866) 376-8880 to receive detailed Instructions. You will be required to provide proof of purchase

THIS LIMITED WARRANTY IS ONLY VALID IF THE PRODUCT IS PURCHASED FROM AN AUTHORIZED SELLER OF T3 GOODS AND IF THE ORIGINAL SERIAL NUMBER ON THE PRODUCT HAS NOT BEEN REMOVED OR OTHERWISE TAMPERED WITH

Any implied warranties, obligations, or liabilities, including but not limited to the implied warranty of merchantability and fitness for a particular purpose, shall be limited in duration to the 24 month duration of this written limited warranty. Some states do not allow a limitation on how long an implied warranty lasts. so the above limitation may not apply to you.

IN NO EVENT SHALL T3 BE LIABLE FOR ANY SPECIAL, INCIDENTAL OR CONSEQUENTIAL DAMAGES FOR BREACH OF THIS OR ANY OTHER WARRANTY, EXPRESS OR IMPLIED,

Visit www.T3Micro.com/customer-service to complete your warranty registration.

Model Name: T3 CurlWrap

Model Description:

Model Number: 76680 114" automatic rotating curling iron

Responsible Party in USA: T3 Micro, Inc. 880 El Segundo Ca 90245 866.376.8880

Test Report Number: CN2301KM 001

This equipment has been tested and found to comply with the limits for a Class B digital device, pursuant to Part 15 of the FCC Rules. These limits are designed to provide reasonable protection against harmful interference in a residential installation. This equipment generates, uses and can radiate radio frequency energy and, if not installed and used in accordance with the instructions, may cause harmful interference to radio communications. However, there is no guarantee that interference will not occur in a particular installation

If this equipment does cause harmful interference to radio or television reception, which can be determined by turning the equipment off and on, the user is encouraged to try to correct the interference by one or more of the following measures

- Reorient or relocate the receiving antenna
- increase the separation between the equipment and receiver
- Connect the equipment into an outlet on a circuit different from that to which the receiver is connected.
- Consult the dealer or an experienced radio/TV technician for help


FCC Compliance Statement

This device complies with Part 15 of the FCC Rules. Operation in subject to the following two conditions: (1) this device may not cause harmful interference, and (2) this device must accept any interference received, including interference that may cause undesired operation



No change or modification to this equipment shall be made without the express written approval of the "responsible party as defined in the FCC's rules.



 T3 CURLWRAP <small>User Guide CurlWrap 1.25 Inch Model No. 76680</small> <small>1.25" automatic rotating curling iron for a three speed automatic 1.25 inch rotating curling iron model 76680 Model No. 76680 is model 76680</small>	<p>T3 76680 CurlWrap 1.25 Inch Automatic Rotating Curling Iron [pdf] User Guide 76680 CurlWrap 1.25 Inch Automatic Rotating Curling Iron, 76680, CurlWrap 1.25 Inch Automatic Rotating Curling Iron, 1.25 Inch Automatic Rotating Curling Iron, Automatic Rotating Curling Iron, Rotating Curling Iron, Curling Iron, Iron</p>
--	--

References

- [User Manual](#)