

EVAL-L99H02QF STMicroelectronics User Manual

[Home](#) » [ST](#) » EVAL-L99H02QF STMicroelectronics User Manual 



Contents

- [1 Introduction](#)
- [2 EVAL-L99H02QF board](#)
- [3 Hardware description and setup](#)
- [4 Documents / Resources](#)
 - [4.1 References](#)
- [5 Related Posts](#)

Introduction

The EVAL-L99H02QF is an evaluation board designed to control 4 external N-channel MOS transistors in bridge configuration for DC-motor driving in automotive applications.

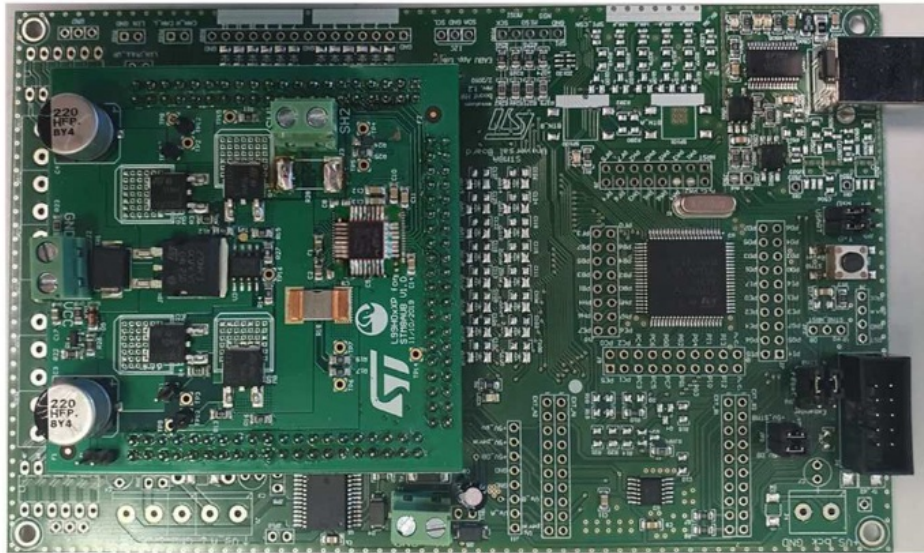
EVAL-L99H02QF board

The EVAL-L99H02QF is composed of a motherboard and a daughterboard on which is pre-assembled the EVAL-L99H02QF (see Figure 1). The system features an enhanced power management power supply functionality including various standby modes.

The motherboard, based on the STM8 microcontroller, provides the logic section for monitoring and driving the EVAL-L99H02QF assembled in the daughterboard.

With the aim to make the board usage and setting simpler, STM provides a dedicated Graphic User Interface (GUI). This enables the user to set EVAL-L99H02QF parameters and at the same time, it shows real-time device information.

Figure 1. EVAL-L99H02QF



Hardware description and setup

This section provides a description of the main components of this evaluation kit, giving instructions for a quick setup of the system.

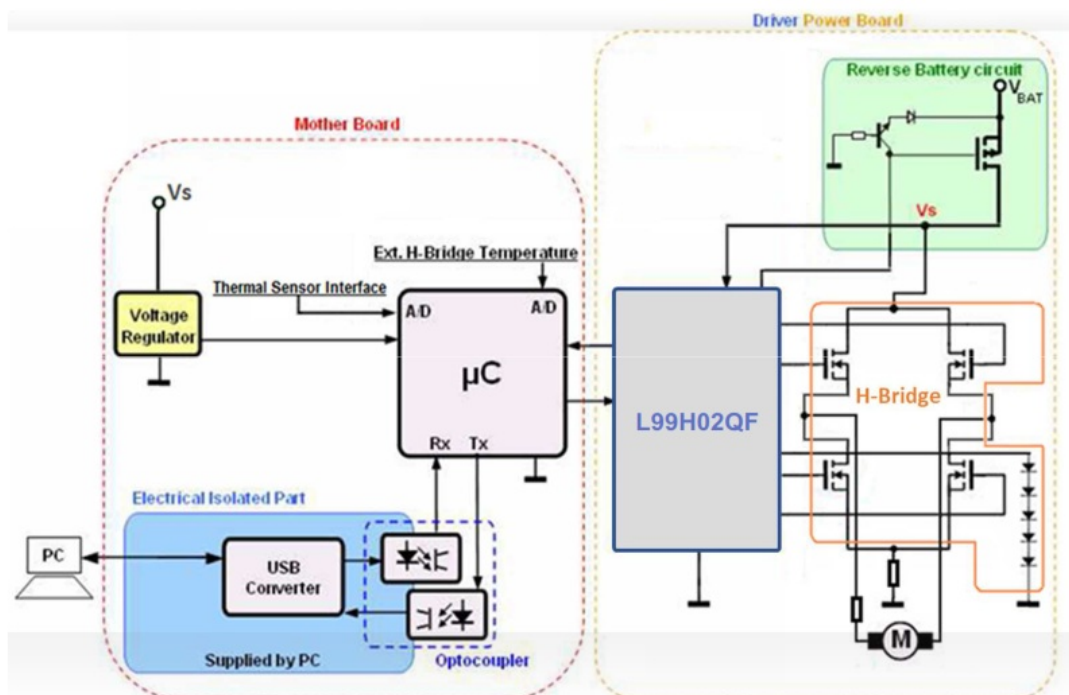
2.1 Components description

The evaluation kit consists of two main components:

- 1 Motherboard based on STM8A microcontroller, interfacing host PC with daughterboard. The communication with the PC is established through an isolated USB.
- 1 Daughterboard assembling EVAL-L99H02QF.

The daughterboard with EVAL-L99H02QF and the motherboard is already properly plugged provided.

Figure 2. EVAL-L99H02QF block diagram



2.2 Motherboard schematic

A universal motherboard is used to control and drive the daughterboard containing the EVAL-L99H02QF. The motherboard has the following functions:

- USB-to-UART conversion: an FT232RL USB-to-serial UART interface is used to convert the data from the GUI, in the PC, in commands that are processed by the microcontroller.
- STM8AF51xAT microcontroller: it is used to convert the commands from the GUI in control signals for the L99H02QF in the daughterboard. Also, it processes the data received from the L99H02QF and returns the results to the GUI by USB.
- L4995R LDO: this LDO is used to convert the +12 V used to supply the motherboard to a +5 V voltage used to supply the microcontroller and the L99H02QF in the daughterboard.
- Socket and connectors to plug the daughterboard.

The motherboard schematic is shown in the following figures. The Schematic and BOM of the motherboard can be found on the ST website.

Figure 3. STM8 Uni board - I/O and body

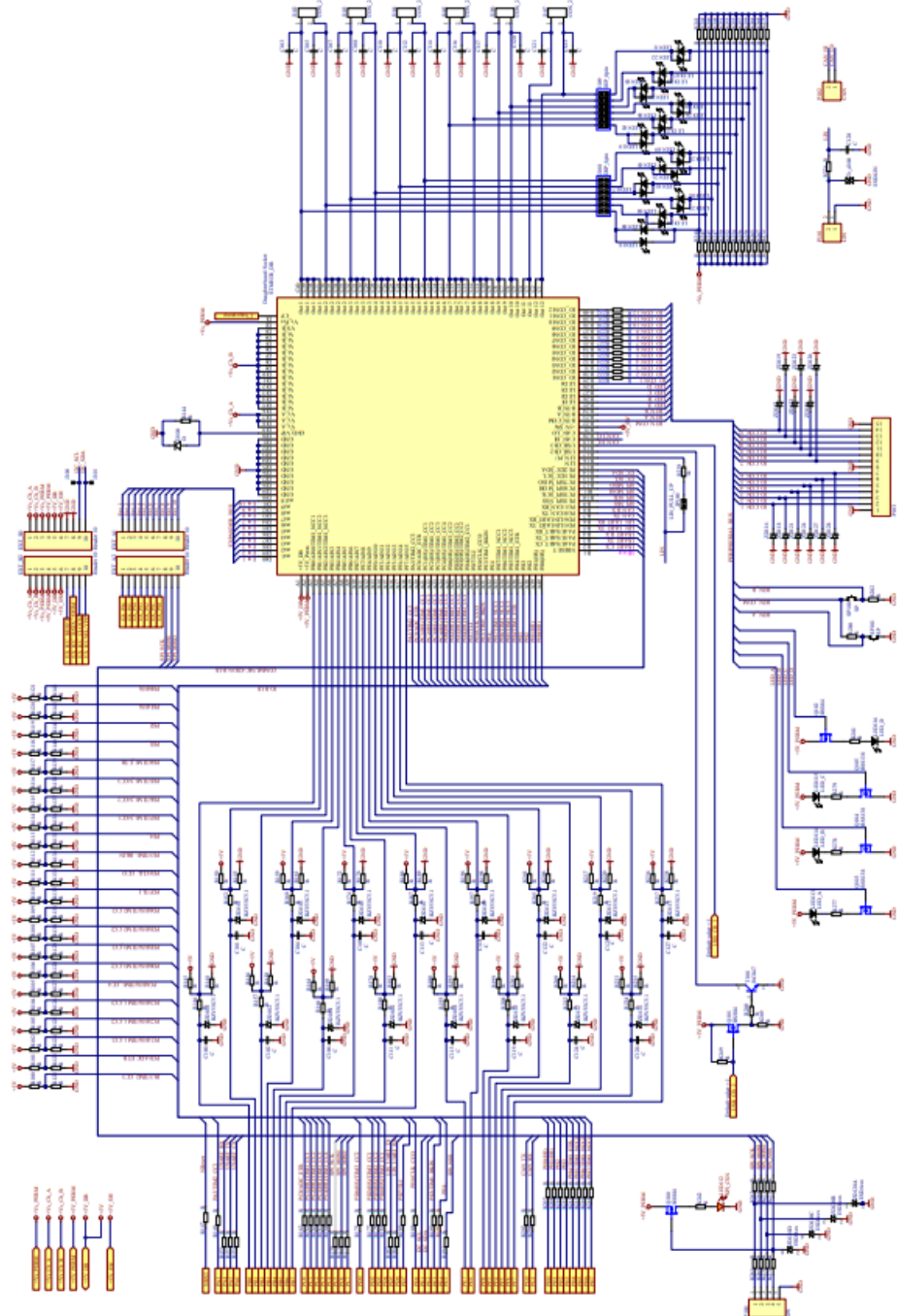


Figure 4. STM8 Uni board - USB interface

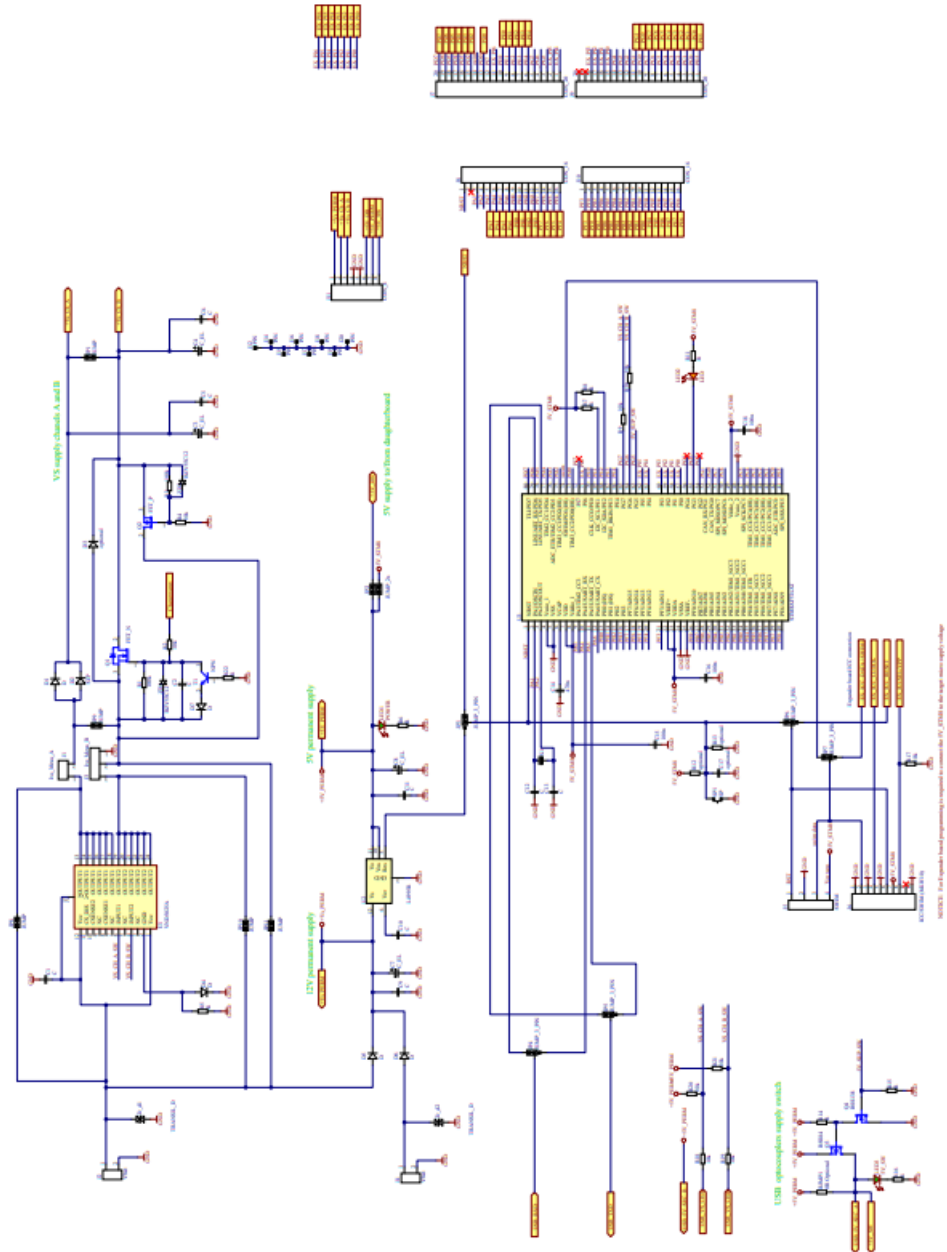
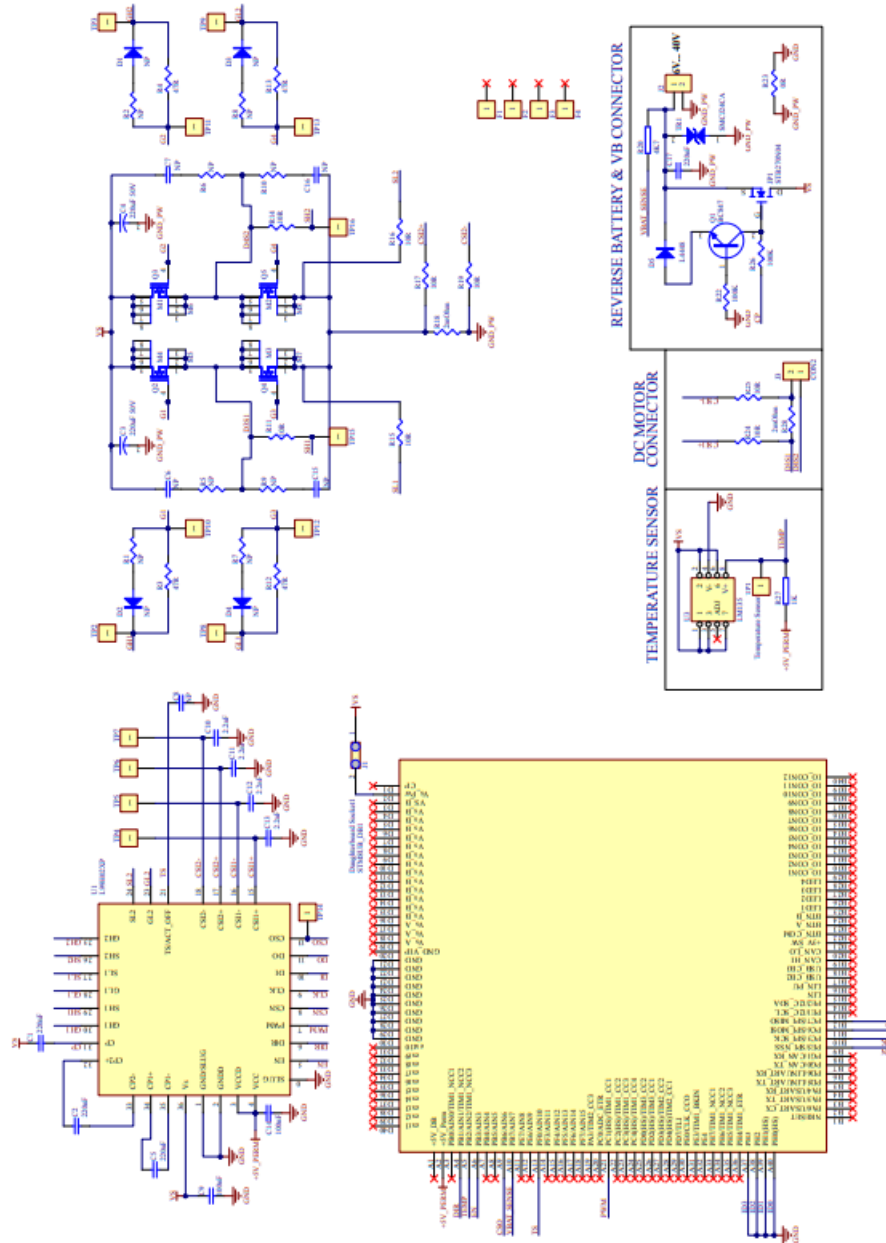


Figure 6 shows the schematic of the daughterboard.

- 1 EVAL-L99H02QF and the components necessary for its functionality.
- 1 connector to the motherboard.
- 1 temperature sensor LM135.
- 1 DC motor connector.
- 1 reverse battery network and VB connector.
- 1 H-bridge.

The schematic and BOM of the daughterboard can be found on the ST website.

Figure 6. EVAL-L99H02QF daughterboard schematic



2.4 Motherboard layout

The EVAL-L99H02QF motherboard was designed in a 2 layers board. The motherboard's Top and Bottom layers are shown in Figure 7 and Figure 8. Gerber files of the motherboard can be found on the ST website

Figure 7. Assembly Top

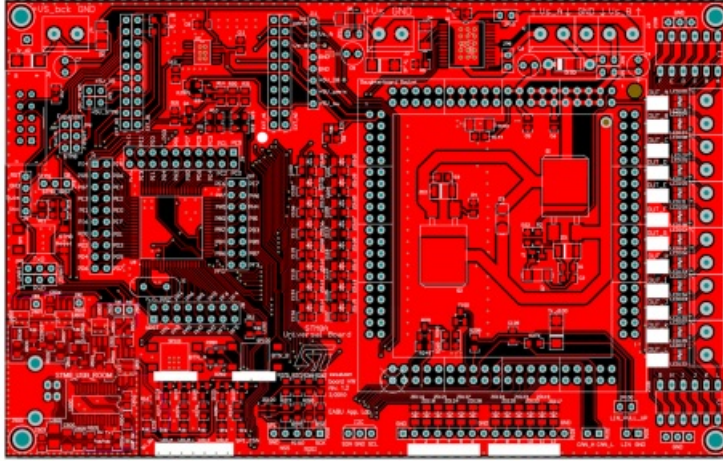
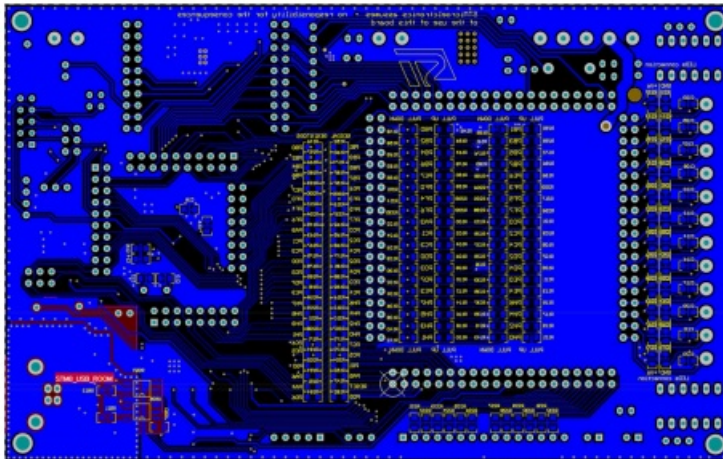


Figure 8. Assembly Bottom



2.5 Daughterboard layout

Different choices regarding the number of layers can be used. A two-layer or an N-layers (where N can be 3 or 4) application board can be used to develop the board for the L99H02QF application.

A 4 layers solution was chosen to design the EVAL-L99H02QF daughterboard to increase the ground area on which to disperse the heat.

The Top, Inner 1, Inner 2, and Bottom layers are shown in the following figures.

Gerber files of the daughterboard can be found on the ST website.

Figure 9. Assembly Top

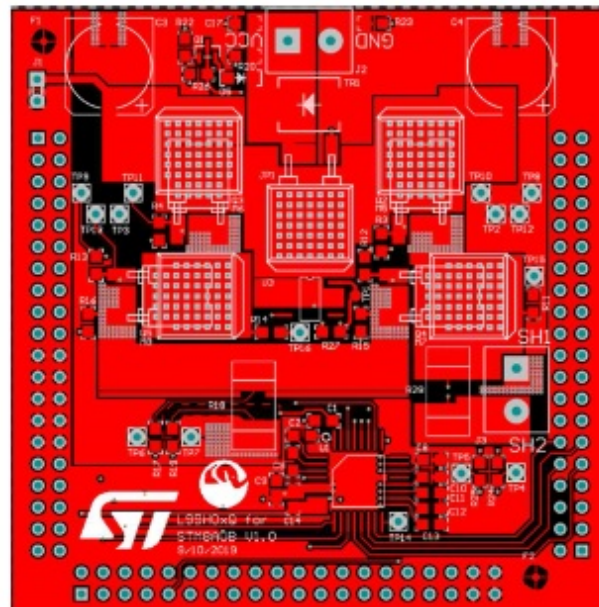


Figure 10. Inner 1

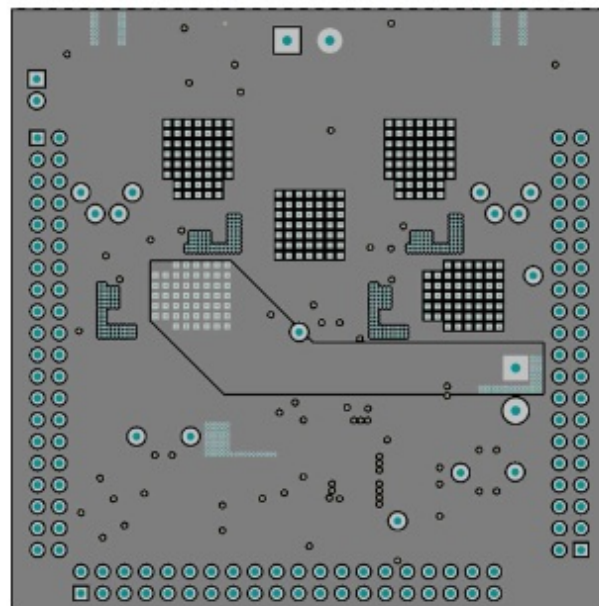


Figure 11. Inner 2

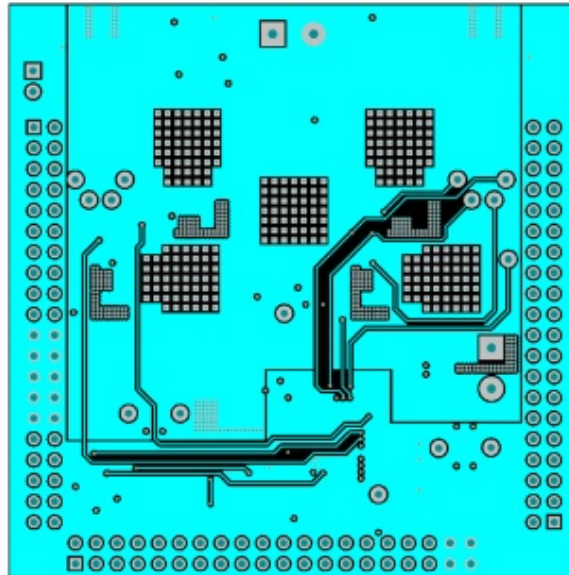
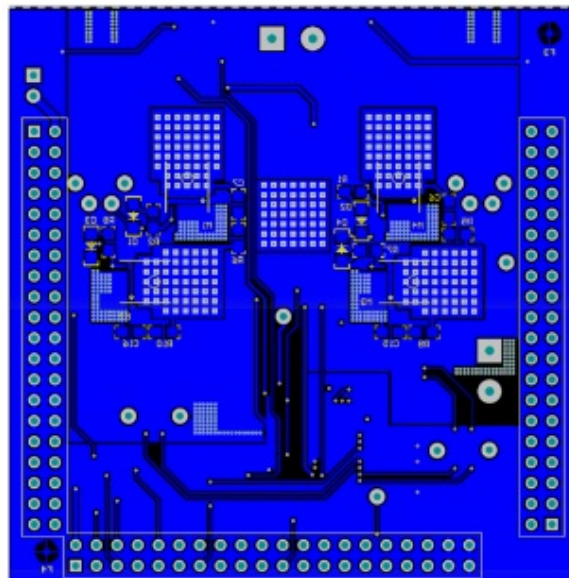


Figure 12. Assembly Bottom



2.6 Board connection and setup

Figure 13 shows the placement of the components on the motherboard. Also, the placement of the connectors to be used to supply the evaluation board and to connect with a host PC through a USB cable is shown.

Figure 13. Motherboard section

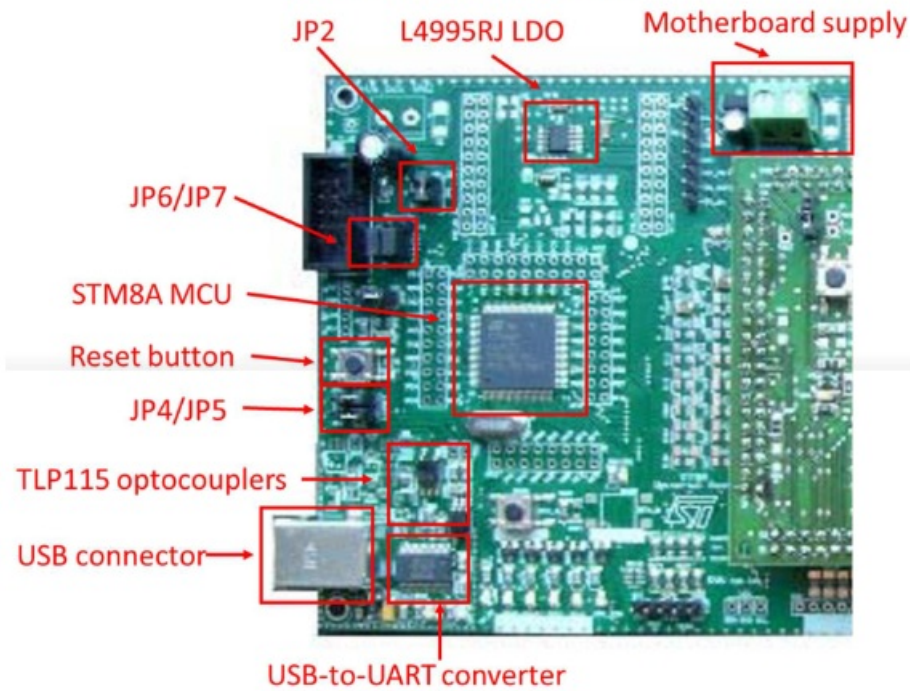
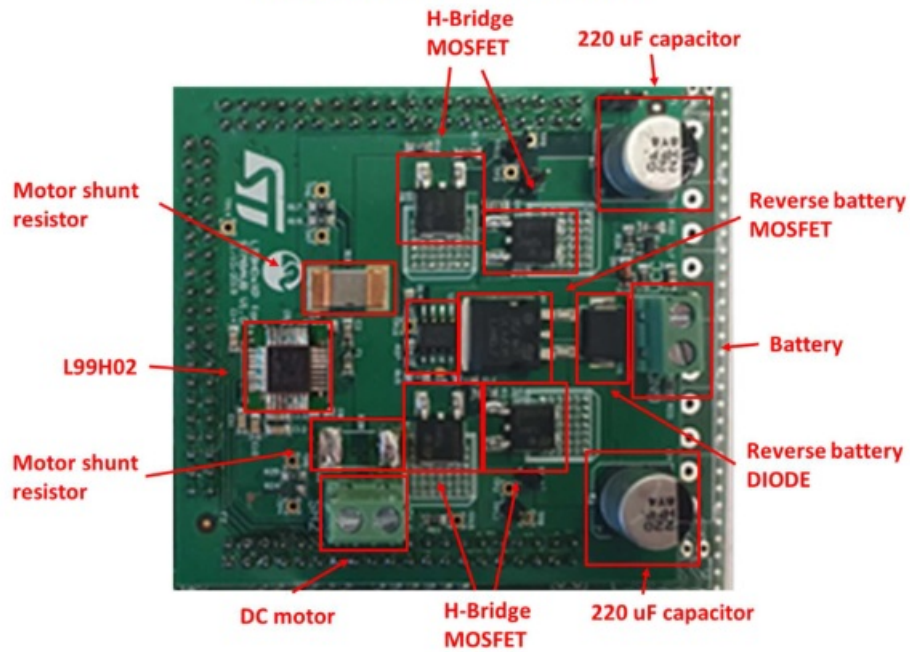


Figure 14 shows the placement of the components on the daughterboard.

Figure 14. Daughterboard section



The jumpers of the motherboard are already set in their default position.

Table 1. Motherboard jumper configuration

Jumper	Description	Default position
JP2	+5 V_DB	Not present
JP2	+5 V_STM8	Present
JP4	RxD	USART
JP5	TxD	USART
JP6	Reset	STM8
JP7	Swim	STM8

Revision history

Table 2. Document revision history

Date	Version	Changes
2-Nov-21	1	Initial release.

IMPORTANT NOTICE – PLEASE READ CAREFULLY

STMicroelectronics NV and its subsidiaries (“ST”) reserve the right to make changes, corrections, enhancements, modifications, and improvements to ST products and/or to this document at any time without notice. Purchasers should obtain the latest relevant information on ST products before placing orders. ST products are sold pursuant to ST’s terms and conditions of sale in place at the time of order acknowledgment.

Purchasers are solely responsible for the choice, selection, and use of ST products and ST assumes no liability for application assistance or the design of Purchasers’ products.

No license, express or implied, to any intellectual property right is granted by ST herein.


Resale of ST products with provisions different from the information set forth herein shall void any warranty granted by ST for such product.

ST and the ST logo are trademarks of ST. For additional information about ST trademarks, please refer to www.st.com/trademarks. All other product or service names are the property of their respective owners.

Information in this document supersedes and replaces information previously supplied in any prior versions of this document.

© 2021 STMicroelectronics – All rights reserved
UM2922 – Rev 1

Documents / Resources

	<p>ST EVAL-L99H02QF STMicroelectronics [pdf] User Manual EVAL-L99H02QF STMicroelectronics, EVAL-L99H02QF, STMicroelectronics</p>
---	---

References

-  [STMicroelectronics: Our technology starts with you](#)
-  [STMicroelectronics Trademark List - STMicroelectronics](#)

