



Contents [[hide](#)]

- [1 SB Ara-TX Bookshelf Speaker Kit](#)
- [2 Technical Specifications](#)
- [3 Special Features](#)
- [4 Frequency](#)
- [5 Mechanical Drawing](#)
- [6 PARTS DESCRIPTION](#)
- [7 Crossover Schematic](#)
- [8 Part List](#)
- [9 Assembly Instructions](#)
- [10 Documents / Resources](#)
 - [10.1 References](#)



SB Ara-TX Bookshelf Speaker Kit



Technical Specifications

- **Frequency range:** 45-32000 Hz +/-3 dB
- **Sensitivity (2.83V / 1m):** 87 dB
- **Nominal impedance:** 40Ω
- **Max SPL:** 105 dB
- **Recommended amplifier:** 40-150 W
- **Cross-over frequency:** 2500 Hz
- **Speaker type:** 2-way
- **Enclosure type:** Bass reflex
- **Port tuning frequency:** 36.5 Hz

Drive Units:

- **High frequency driver:** SATORI TW29TXN-B-8 (Textreme Tweeter)
- **Low frequency drivers:** 6½" SATORI MW16TX-4 (advanced midwoofer)

Cabinet:

- 18 mm MDF
- **Dimensions** (H x W x D): 391 x 190 x 388 mm / 15.4 x 7.48 x 15.27 inch

Net Weight (each):

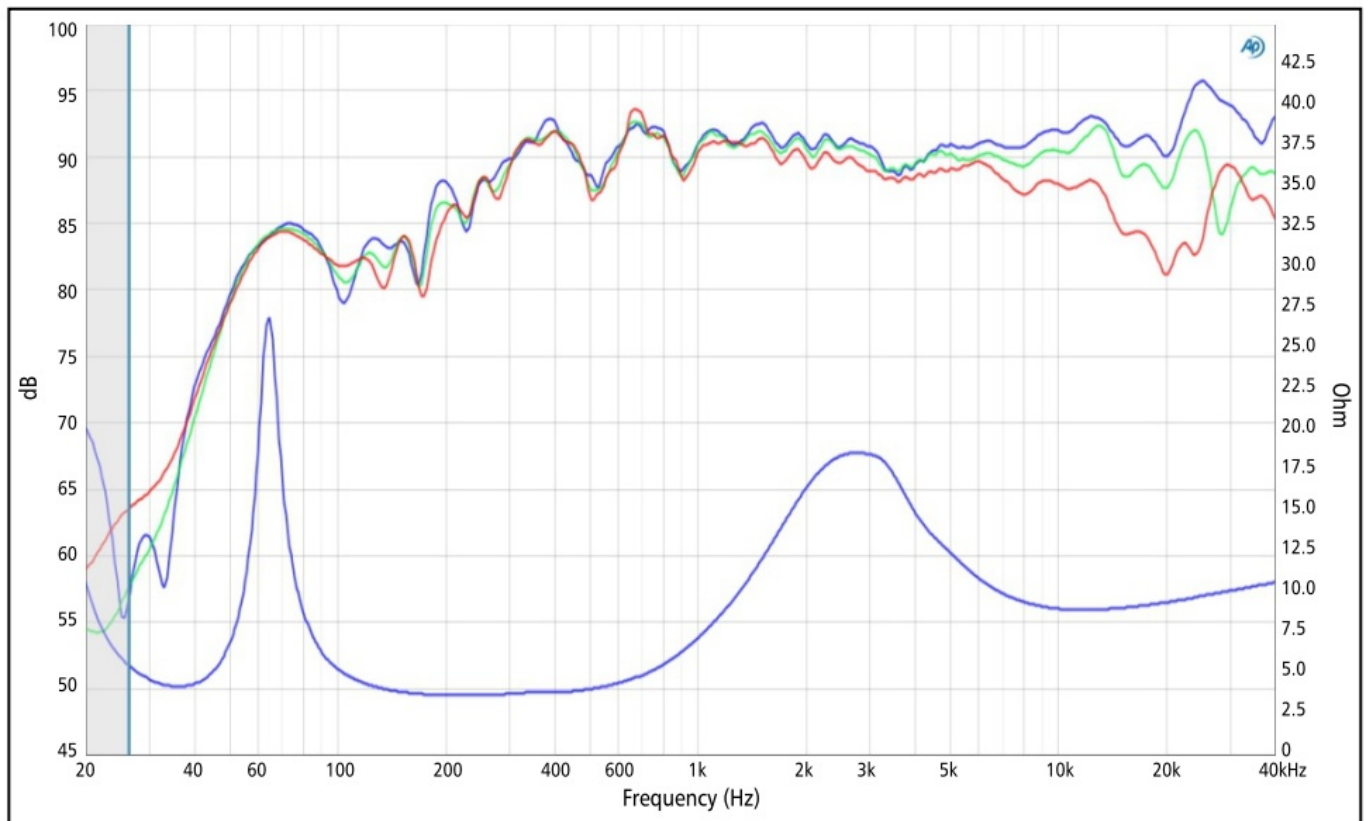
- **Cabinet only:** 8.06 kg / 17.77 lb
- **Full assembly:** 10.3 kg / 22.71 lb

Special Features

- Advanced high-end drivers.
- Faceted cabinet baffle for reduced high-frequency diffraction.
- Inclined baffle for correct time alignment of drivers (allowing for simpler crossover design).
- Wedge-shaped inner rear walls behind the midwoofer for reduced direct reflections.
- Internal bracing to reduce and distribute cabinet vibrations and hence lower sound colouration.
- Solid single-wiring binding posts.

Frequency

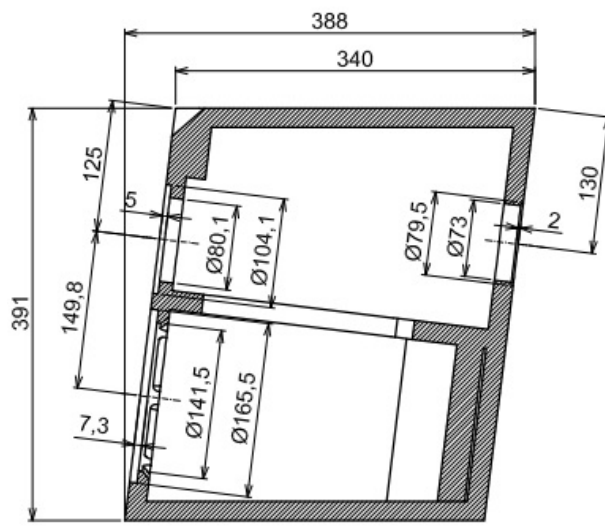
Frequency Response Ara-TX



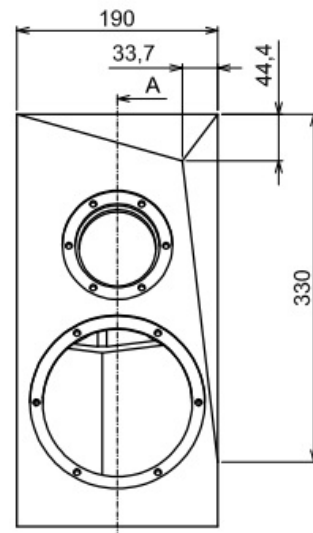
- Measured on-axis, 15° and 30° at 1m in an ordinary room at the bottom of the tweeter faceplate.
- Lower frequency dips and peaks are caused by room modes/reflections.

Mechanical Drawing

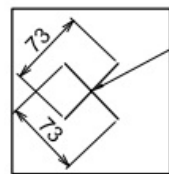
(dimensions in mm)



A-A'

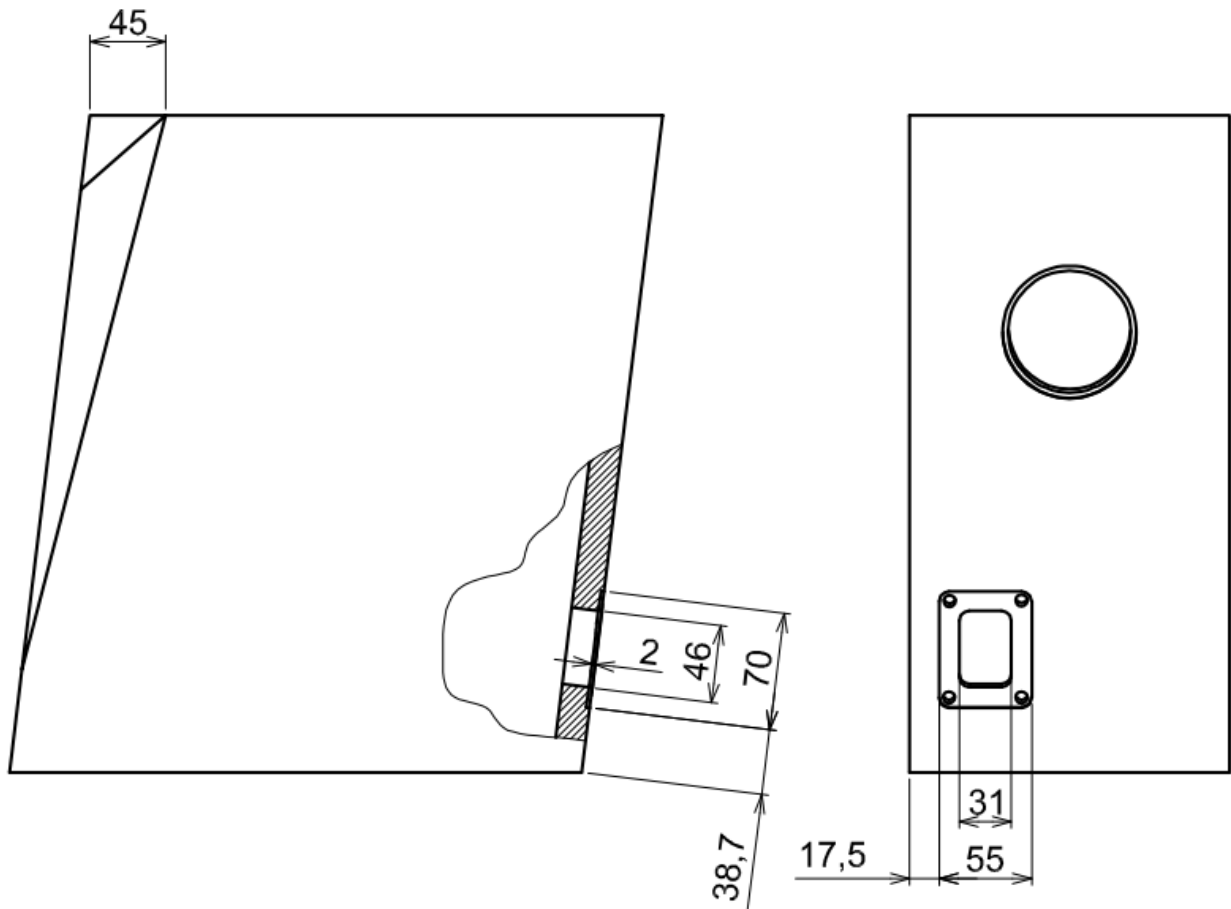


A'

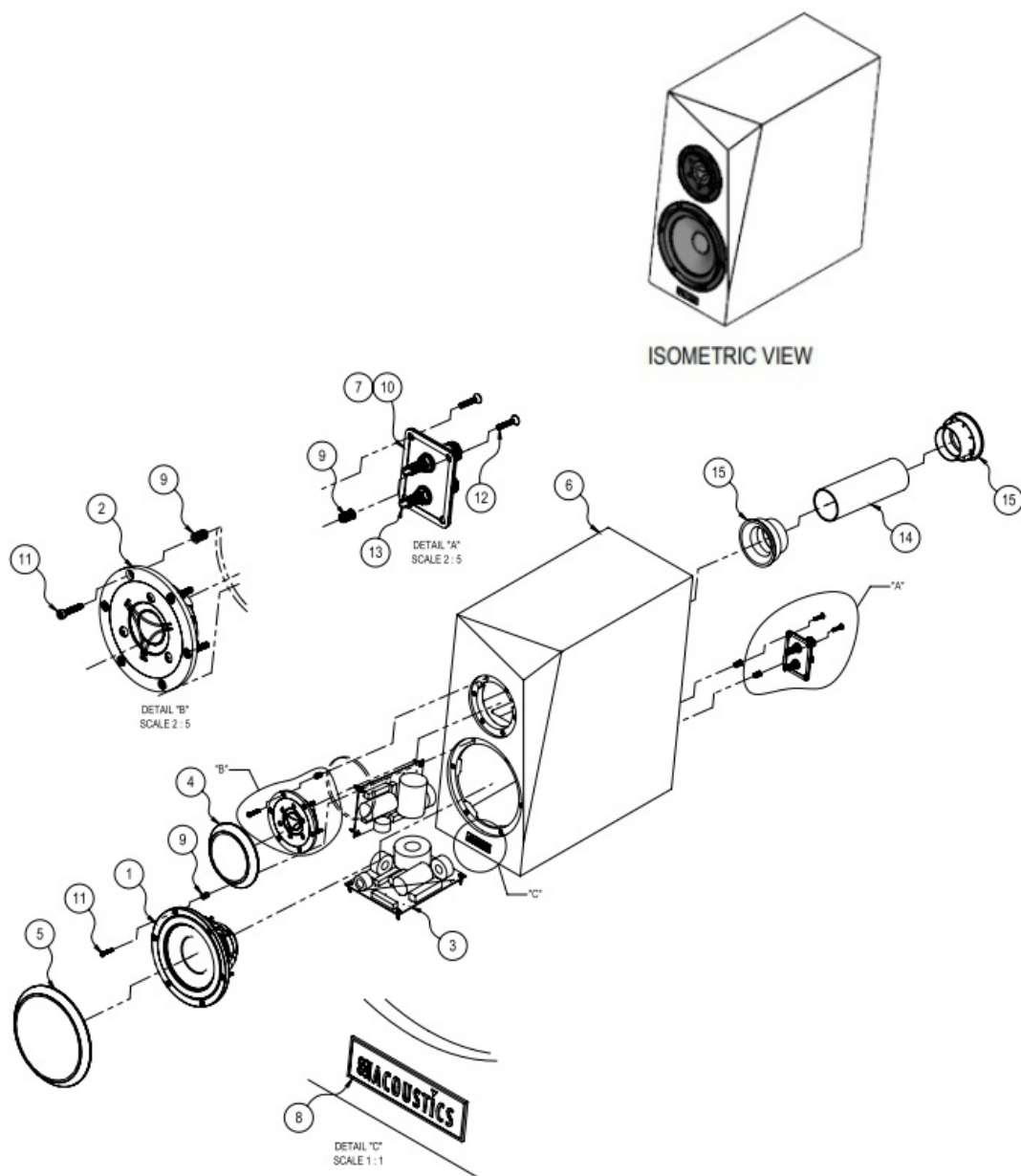


X-CUT
FOR
PAPER PORT

X-CUT EXAMPLE



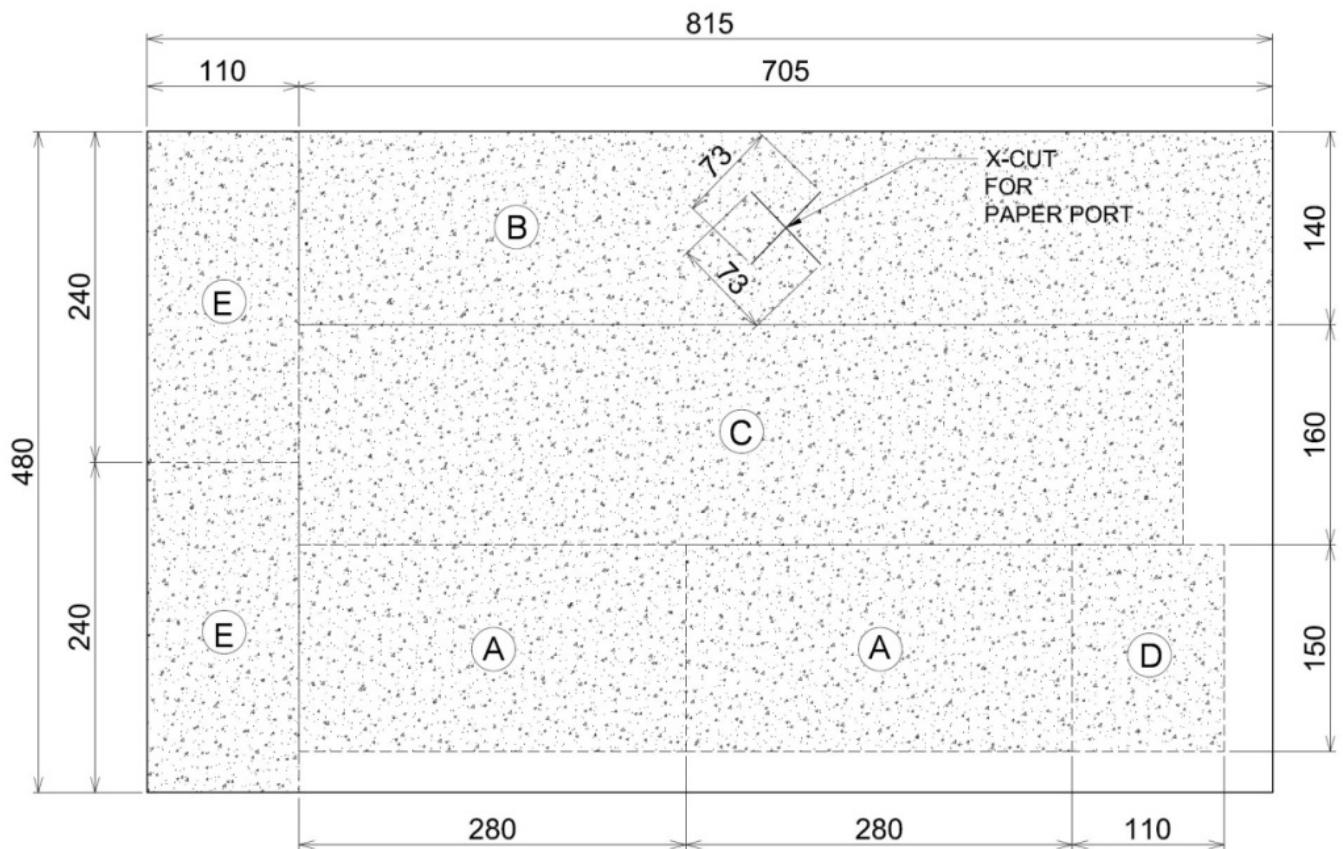
PARTS DESCRIPTION



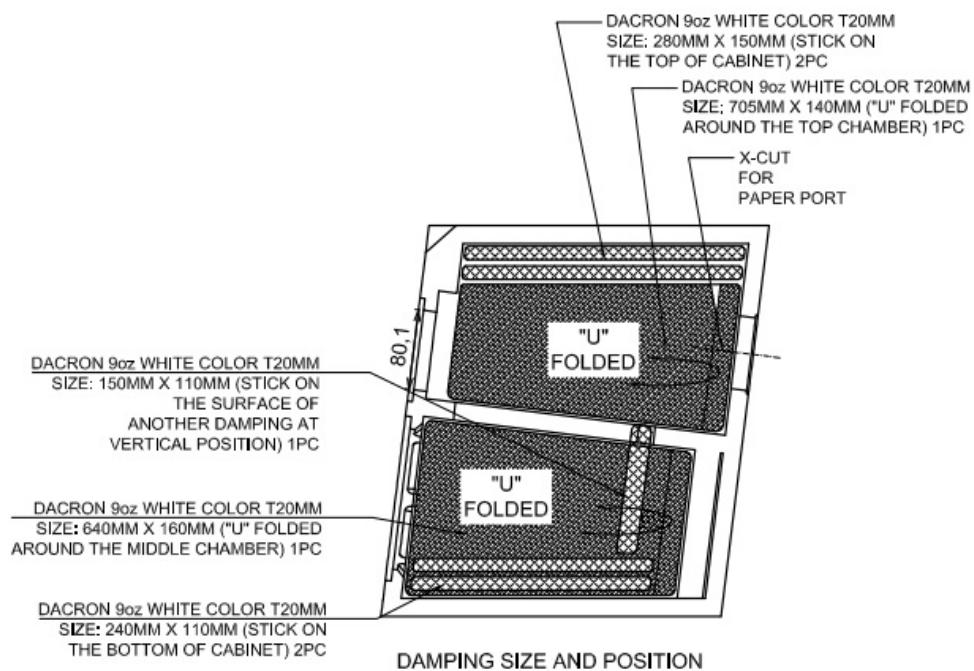
NO.	DESCRIPTION	QTY.
1	6.5in SATORI MW16TX-4	1
2	SATORI TW29TXN-B-8	1
3	ARA TX CROSSOVER	2
4	GRILL ASSY-SATORI TW29 MAGNETIC GRILL	1
5	GRILL ASSY-SATORI 16 MAGNETIC GRILL	1
6	BO-MDF-ARA BLACK HIGH GLOSS (SBE1)	1
7	GS-SEAL-PE FOAM30-240x4x1t-GRAY+3M1000NF0.15	1
8	NT-AL-SB ACOUSTICS-51.5x14.5x0.75t-BLK,TEKS SL&RED	1

NO.	DESCRIPTION	QTY.
9	NU-INSERT NUT M4 WITH FLANGE	16
10	PN-STAINLESS-TERMINAL PLATE SBA SATORI ARA	1
11	SR-MSIH-4x20-ED BLK	12
12	SR-YFS-4x20-STAINLESS	4
13	TM-BINDING POST HD-520-A RED & BLK CLR	1
14	WT-PORT TUBE (OD54x160x2t)mm BLK PAPER	1
15	WT-ABS-PORT FLARE 2in BLK	2

Damping Material Cut Pattern (dimensions in mm)

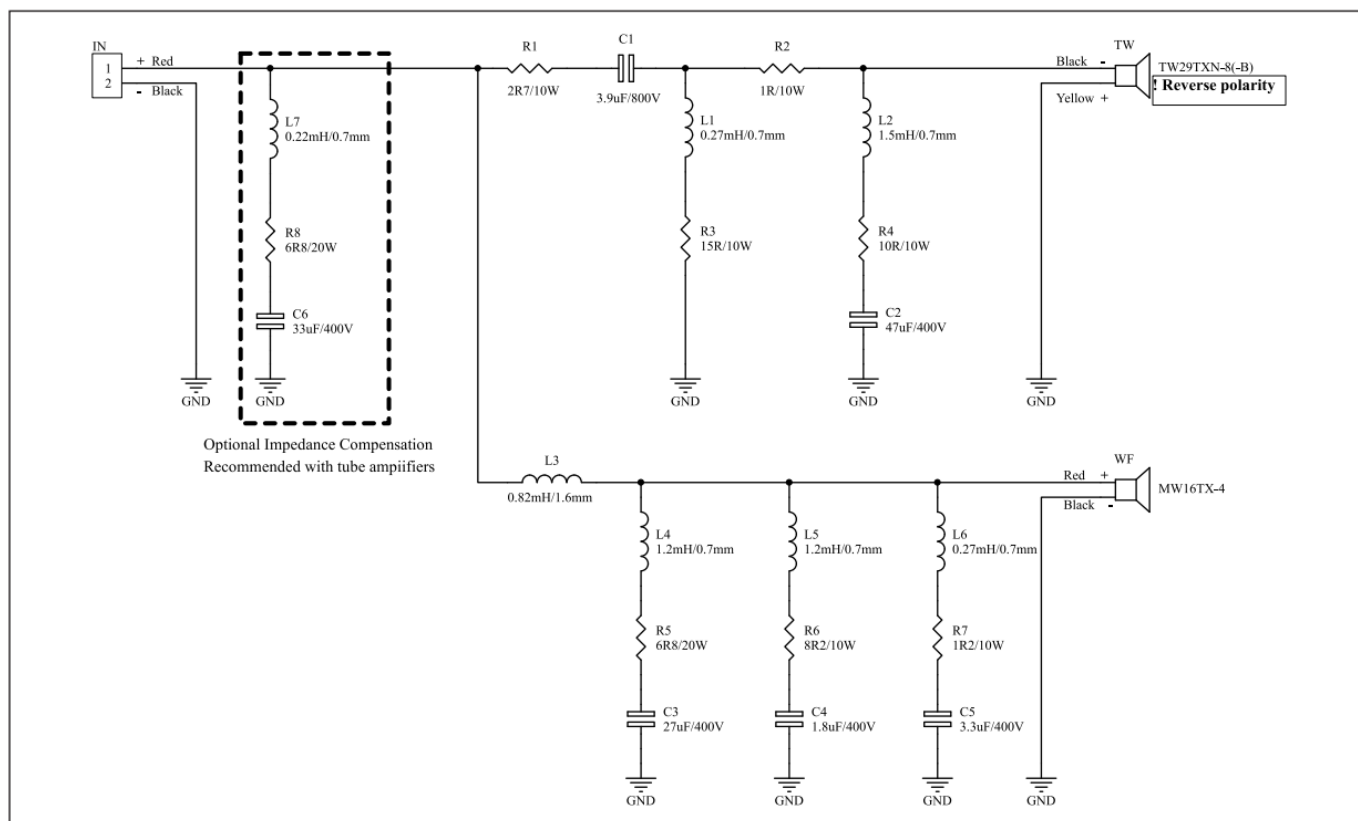


Damping Material Position (dimensions in mm)



Crossover Schematic

Crossover Schematic Ara-TX



Part List

(each cabinet):

- High frequency driver SATORI TW29TXN-B-8 (sold separately)..... 1 pc
- Low frequency driver 6½" SATORI MW16TX-4 (sold separately) 1 pc
- Ara crossover kit (sold separately) 1 pc
- Hex socket screw M4 x 20mm (for drivers)..... 12 pcs
- Countersunk screw M4 x 20mm (for terminal plate) 4 pcs
- Wood screw 4 x 16 mm for crossover (from crossover kit) 6 pcs
- Insert nut M4 (installed on cabinet) 16 pcs
- Stainless Terminal plate 1 pc
- Binding post 1 pair
- Seal gasket (for terminal plate) 1 pc
- Port flare (installed on cabinet) 1 pc

- Port paper tube (installed on cabinet) 1 pc
- Damping •••• 1 pc
- Name plate ••••••••••
•••• 1 pc
- Tweeter grille ••••••••••
•• .. 1 pc
- Woofer grille ••• 1 pc

Tools Needed:

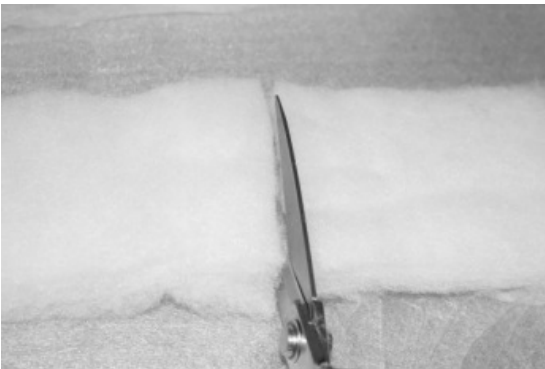
- Hex key 3mm size (for driver screw).
- Hex key 2.5mm size (for terminal plate screw).
- Philips screwdriver no. 2 (for crossover screw)
- Hot melt glue gun (for attaching the damping and sealing the wire hole).

Assembly Instructions

1. Take out the cabinet from the packaging and take out the raw damping material from the cabinet.



2. Cut the raw damping material into 7 pieces of damping according to the cutting pattern diagram.



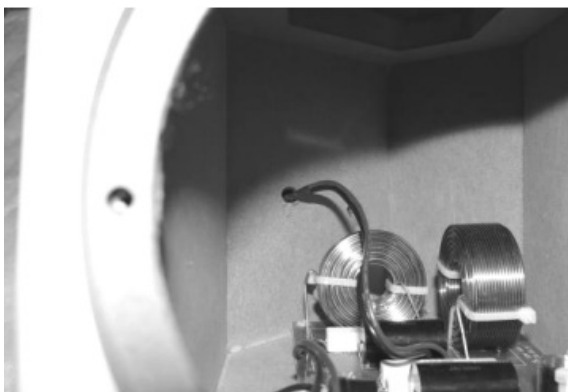
3. Place the crossover on the bottom and side panel inside the cabinet as shown. Place the big inductor towards the rear terminal.



4. Mount the crossover with the 6 screws supplied.



5. Pass the input wire through the hole in the rear panel of the cabinet.



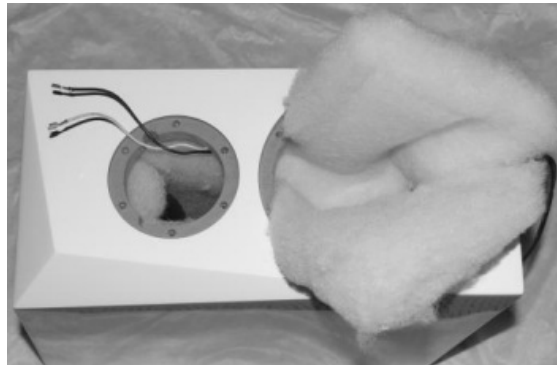
6. Seal the cable hole with hot melt glue.



7. Pull the tweeter cable through the hole in the cabinet bracing.



8. Place each damping part into the cabinet according to the position in the diagram.
Add a bit of glue if needed to hold the damping material in place



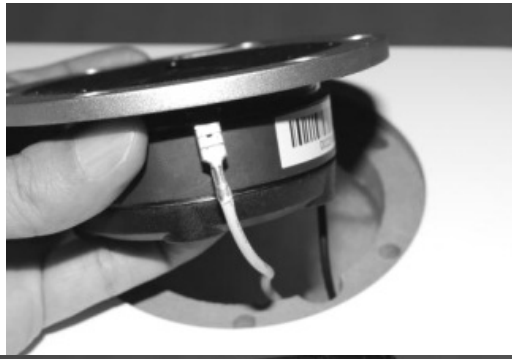
- Pass the input cable through the terminal hole on the back of the cabinet, and connect it to the binding posts.



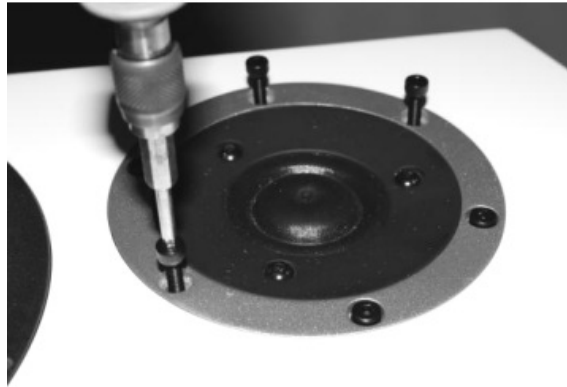
9. Mount the terminal plate to the terminal hole at the back of the cabinet.



10. Hook up the cable to the tweeter and woofer terminals.



11. Carefully place the drivers in the cabinet and fasten the screws.




12. Repeat for the other cabinet and your SB ACOUSTICS Ara-TX are now complete.
Enjoy!.



• Find Us On

◦ www.sbacoustics.com

Documents / Resources



SB ACOUSTICS


Ara-TX | User Manual



[SB Ara-TX Bookshelf Speaker Kit \[pdf\]](#) User Manual

Ara-TX Bookshelf Speaker Kit, Ara-TX, Bookshelf Speaker Kit, Speaker Kit

References

- [User Manual](#)

 Ara-TX, Ara-TX Bookshelf Speaker Kit, Bookshelf Speaker Kit, SB, Speaker Kit

 SB  Kit

Leave a comment

Your email address will not be published. Required fields are marked *

Comment *

Name

Email

Website

☐ Save my name, email, and website in this browser for the next time I comment.

Post Comment

Search:

e.g. whirlpool wrf535swhz

Search

[Manuals+](#) | [Upload](#) | [Deep Search](#) | [Privacy Policy](#) | [@manuals.plus](#) | [YouTube](#)

This website is an independent publication and is neither affiliated with nor endorsed by any of the trademark owners. The "Bluetooth®" word mark and logos are registered trademarks owned by Bluetooth SIG, Inc. The "Wi-Fi®" word mark and logos are registered trademarks owned by the Wi-Fi Alliance. Any use of these marks on this website does not imply any affiliation with or endorsement.