

RL R65091432 LED Light User Guide

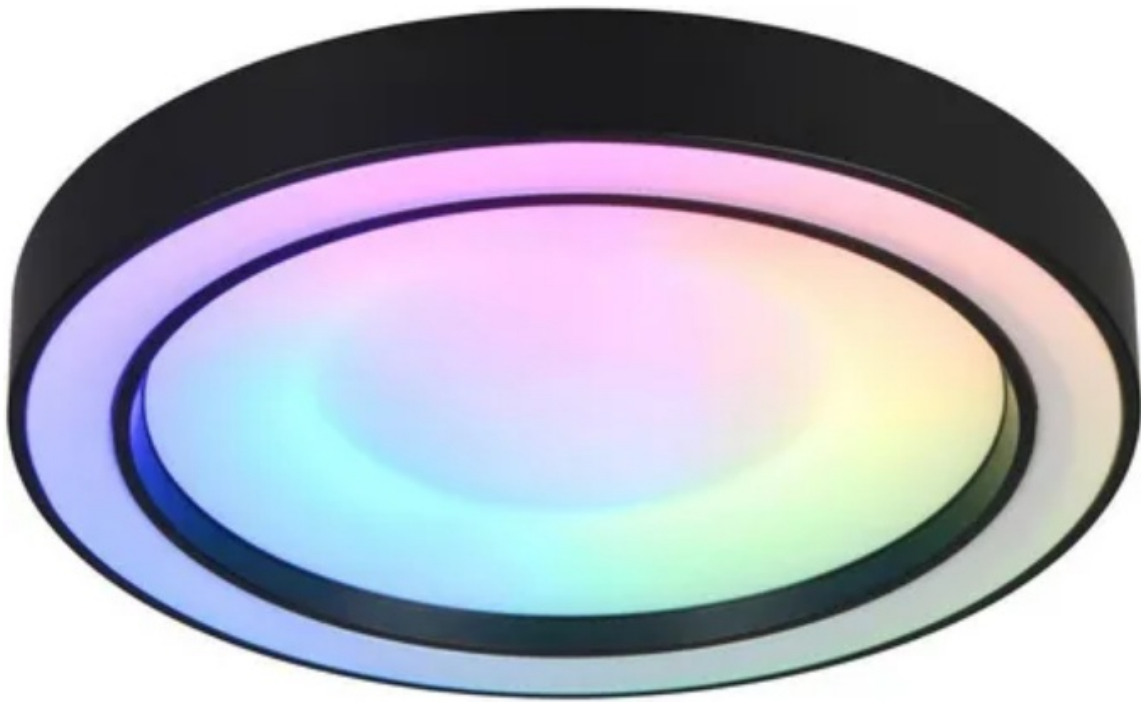
[Home](#) » [RL](#) » RL R65091432 LED Light User Guide 

Contents

- [1 RL R65091432 LED Light](#)
- [2 Product Information](#)
- [3 FAQ](#)
- [4 Installation Instructions](#)
- [5 Remote Instructions](#)
- [6 Symbols](#)
- [7 Contact](#)
- [8 Documents / Resources](#)
 - [8.1 References](#)
- [9 Related Posts](#)



RL R65091432 LED Light



Product Information

Product Details

- Art.-№: R65091432
- Type: 93833IR

Specifications

Feature	Description
Power Supply	230V~50Hz
Light Source	1 x LED 22W + RGB
Battery Type	Infrared battery: 2 x AAA, 1.5V

Operating Instructions

- ON: Turn the device on.
- OFF: Turn the device off.
- RGB: Adjust the RGB settings.

FAQ

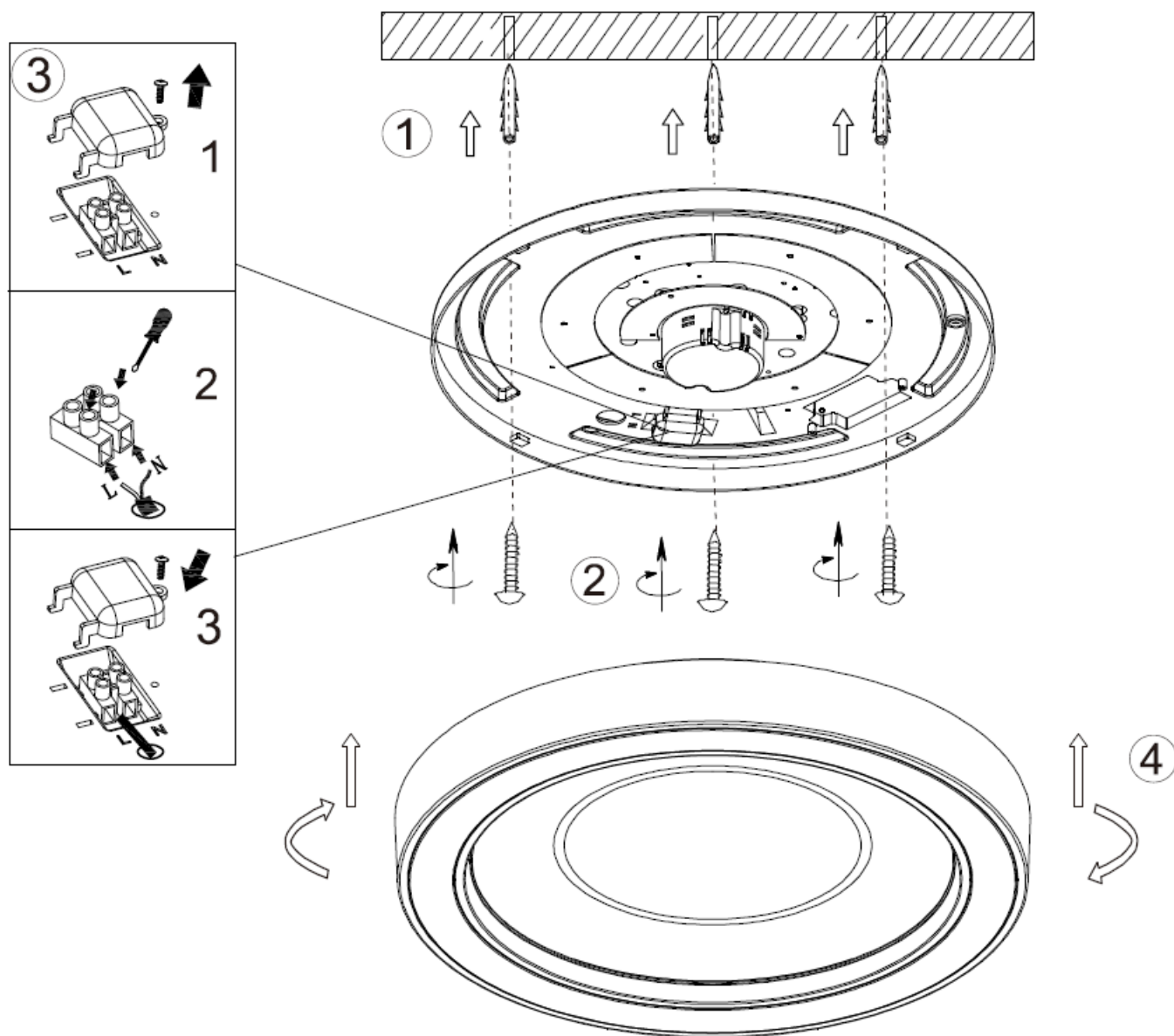
- **What type of batteries does this device use?**
 - This device uses 2 x AAA, 1.5V infrared batteries.
- **What is the power requirement for this device?**
 - The device requires a power supply of 230V~50Hz.
- **What is the light source specification?**

- The device uses 1 x LED 22W with RGB capabilities.

WARNING!

- Before assembling, please read carefully the safety instructions!

Installation Instructions

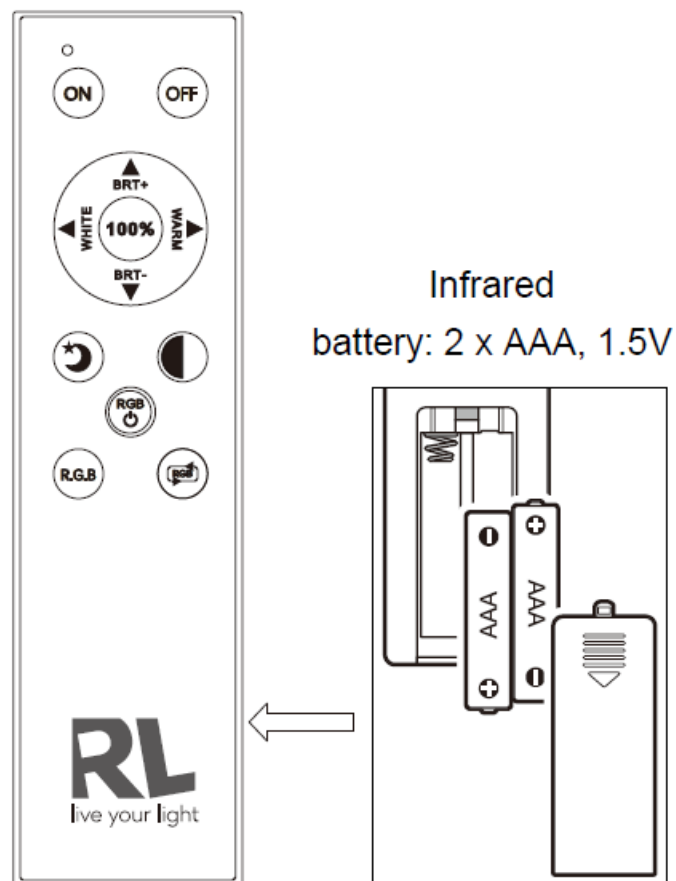


Specs

- 230V~50Hz, 1 x LED 22W+RGB

Remote Instructions

[Type: 93833IR]



This product contains light source(s) of energy efficiency classes) F

Symbols



Contact

Reality Leuchten GmbH

- Gut Nierhof 17 | D-59757 Arnsberg
- www.reality-leuchten.de

Info

- reality-leuchten.de/R65091432


Reality Leuchten GmbH

- TRIO International GmbH
- Gut Nierhof 17 D-59757 Arnsberg
- www.reality-leuchten.de

WEEE-Reg. N^o: DE78273666
TRIO Lighting Ibérica s.l.: RAEE 4544
TRIO Lighting Italia s.r.l.: RAEE IT13020000007829
TRIO Lighting Scandinavia Oy: WEEE PIR2005Y354114/2114

Developed in Germany by RL
Made in PRC

Documents / Resources



[RL R65091432 LED Light](#) [pdf] User Guide
R65091432 LED Light, R65091432, LED Light, Light

References

- [User Manual](#)

[Manuals+](#), [Privacy Policy](#)

This website is an independent publication and is neither affiliated with nor endorsed by any of the trademark owners. The "Bluetooth®" word mark and logos are registered trademarks owned by Bluetooth SIG, Inc. The "Wi-Fi®" word mark and logos are registered trademarks owned by the Wi-Fi Alliance. Any use of these marks on this website does not imply any affiliation with or endorsement.