

PZ CV-W061 Crew Cab Running Boards



PZ CV-W061 Crew Cab Running Boards Instruction Manual

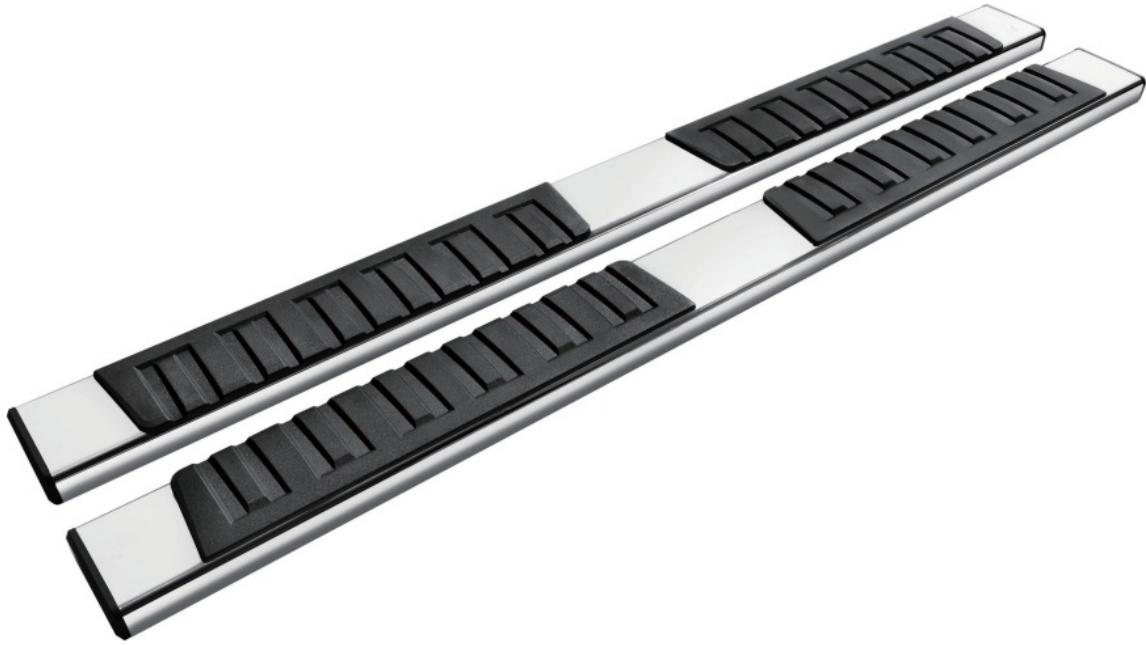
[Home](#) » [PZ](#) » PZ CV-W061 Crew Cab Running Boards Instruction Manual 

Contents

- [1 PZ CV-W061 Crew Cab Running Boards](#)
- [2 Tools Required](#)
- [3 Step 1](#)
- [4 Step 2](#)
- [5 Step 3](#)
- [6 Step 4](#)
- [7 Part List](#)
- [8 Documents / Resources](#)
 - [8.1 References](#)



PZ CV-W061 Crew Cab Running Boards



Tools Required

- 13mm Socket
- Ratchet
- Torque Wrench

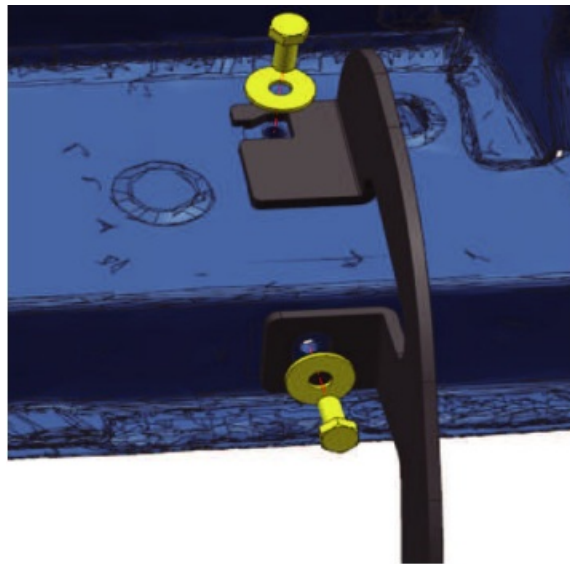
Notes

- Read this instruction carefully before starting installation.
- Proper tools will improve the quality of installation and reduce the time required.
- If missing parts or any damage is found, please take a picture, and contact us.

Step 1

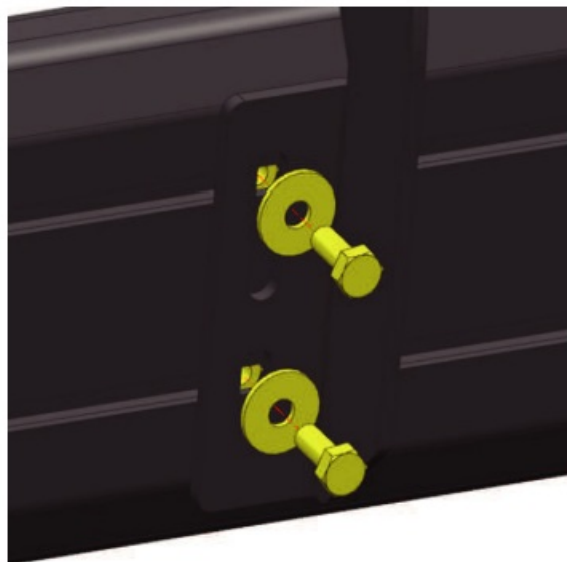
1. Locate (3) mounting positions on each side.
2. There are 4 mounting positions on each side, we will use the 1st, 2nd, 4th.
3. Clean the sealant and dirt around mounting positions.
4. Remove rubber plugs and clean factory threaded inserts.

Step 2



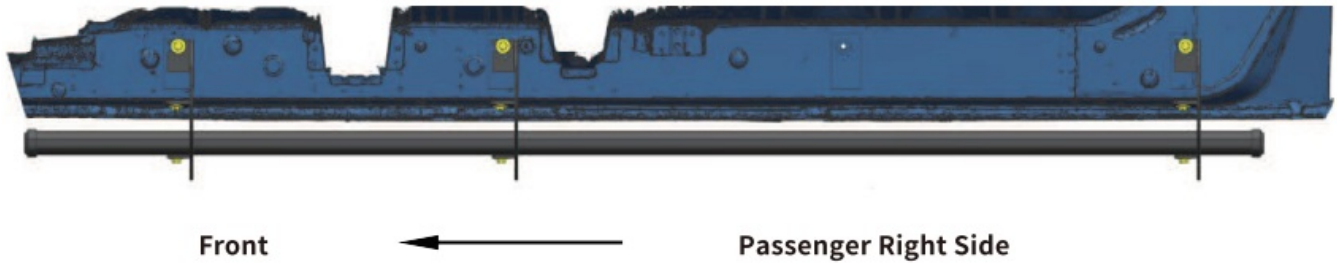
1. Attach the bracket to the rocker panel and secure it with (2) M8 hex bolts, and (2) M8 flat washers.
2. Repeat to install other brackets, do not fully tighten.

Step 3



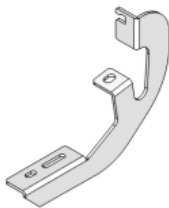
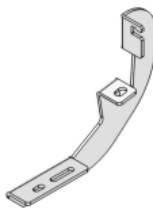
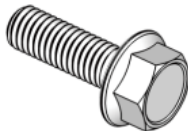


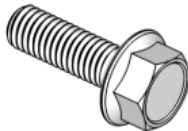

1. Remove (6) M8 hex bolts and (6) M8 flat washers behind the step bar.
2. Slide mounting tracks to proper positions.
3. With assistance, lift and attach the step bar to brackets. Secure the step bar on brackets with (6) M8 hex bolts and (6) M8 flat washers.
4. Repeat to install the other side step bar, do not fully tighten.

Step 4

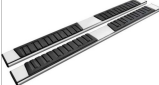


1. Tighten M8 hex bolts on a vehicle with 15 ft. lbs. torque.
2. Adjust the step bar to level and tighten M8 hex bolts with 15 ft. lbs. torque.
3. After the step bar is installed, periodic checks to ensure all mounting hardware remains secure and tight.

Part List

					
Driver Left Side Bracket	×3	Passenger Right Side Bracket	×3	M8 Hexagon Bolt	×12
					
M8 Flat Washer	×12	M8 Hexagon Nut	×12	M8 Hexagon Bolt (on step bar)	×12
					
M8 Flat Washer (on step bar)	×12				

Documents / Resources

<div><div>Installation & CARE</div><div>CV-W061</div><div></div><div><p>Read these instructions carefully before using the product. Improper use of the product may result in injury or property damage. Please read the entire instruction manual before using the product.</p></div><div>- 1 -</div></div>	<p>PZ CV-W061 Crew Cab Running Boards [pdf] Instruction Manual</p> <p>CV-W061 Crew Cab Running Boards, CV-W061, Crew Cab Running Boards, Cab Running Boards, Running Boards, Boards</p>
---	---

References

- [User Manual](#)

Manuals+, Privacy Policy

This website is an independent publication and is neither affiliated with nor endorsed by any of the trademark owners. The "Bluetooth®" word mark and logos are registered trademarks owned by Bluetooth SIG, Inc. The "Wi-Fi®" word mark and logos are registered trademarks owned by the Wi-Fi Alliance. Any use of these marks on this website does not imply any affiliation with or endorsement.