

PZ C-3029 Running Boards



PZ C-3029 Running Boards Installation Guide

[Home](#) » [PZ](#) » PZ C-3029 Running Boards Installation Guide 

Contents

- [1 PZ C-3029 Running Boards](#)
- [2 Tools Required](#)
- [3 Part List](#)
- [4 Installation Instruction](#)
- [5 Documents / Resources](#)
 - [5.1 References](#)
- [6 Related Posts](#)

PZ

PZ C-3029 Running Boards



Tools Required

- 13mm Socket
- Ratchet
- Torque Wrench

Part List

1. X2 Step Bar
2. X4 Driver Left Side Bracket
3. X4 Passenger Right Side Bracket
4. X16 M8 Hexagon Bolt
5. X32 M8 Flat Washer
6. X 16 M8 Spring Washer
7. X 16 M8 Hexagon Nut
8. X8 M8 Clip Nut
9. X 16 M8 Hexagon Bolt (on step bar)
10. X16 M8 Flat Washer (on step bar)



Notes

Read this instruction carefully before starting installation. Proper tools will improve the quality of installation and reduce the time required. If missing parts or any damage found, please take a picture, and contact us.

Installation Instruction

Step 1:

1. Locate (2) mounting positions each side.
2. There are 3 mounting positions each side, we will use the 1st and the 3rd.
3. Remove the factory tape and clean the dirt around the mounting positions.

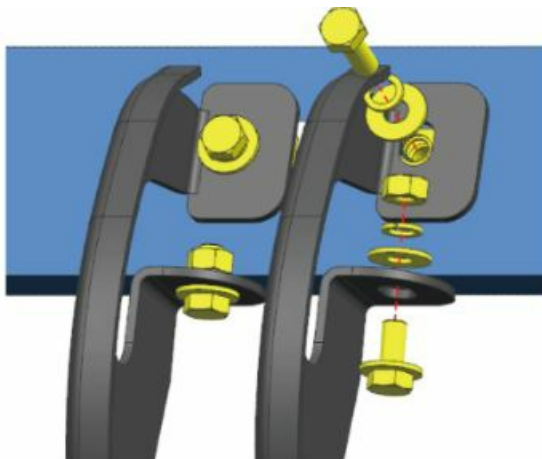
Step 2:

1. Insert M8 clip nuts onto square holes on the inner rocker panel. (Insert M8 clip nut onto the square hole and over the smaller hole next to it).
2. Attach the bracket to inner rocker panel (vehicle front side first).
3. Secure the bracket on rocker panel with (1) M8 hex bolt, (1) M8 spring washer, (1) M8 flat washer.
4. Secure the bracket on pinch weld with (1) M8 hex bolt, (1) M8 spring washer, (2) M8 flat washers, (1) M8 hex nut.



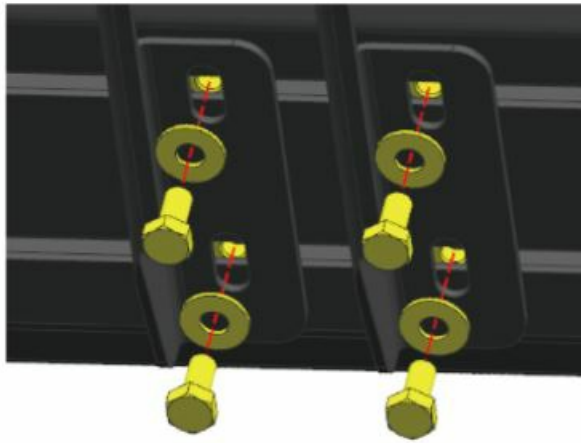
Step 3:

1. In same mounting position, attach another bracket to the mounting hole next to the first bracket.
2. Secure the bracket on rocker panel with (1) M8 hex bolt, (1) M8 spring washer, (1) M8 flat washer.
3. Secure the bracket on pinch weld with (1) M8 hex bolt, (1) M8 spring washer, (2) M8 flat washers, (1) M8 hex nut.
4. Repeat step 2 and step 3 to install remaining brackets.



Step 4:

1. Remove (8) M8 hex bolts and (8) M8 flat washers behind step bar.
2. Slide mounting tracks to proper positions.
3. With assistance, lift and attach the step bar to brackets. Secure the step bar with (8) M8 hex bolts, (8) M8 flat washers.
4. Repeat to install the other side step bar, do not fully tighten.



Step 5:

1. Tighten M8 hex bolts and nuts on vehicle with 15 ft. lbs. torque.
2. Adjust the step bar to level and tighten M8 hex bolts with 15 ft. lbs. torque.
3. After the step bar installed, periodic check to ensure all mounting hardware remains secure and tight.



Documents / Resources

	<p>PZ C-3029 Running Boards [pdf] Installation Guide C-3029 Running Boards, C-3029, Running Boards, Boards</p>
--	---

References

- [User Manual](#)

[Manuals+](#), [Privacy Policy](#)

This website is an independent publication and is neither affiliated with nor endorsed by any of the trademark owners. The "Bluetooth®" word mark and logos are registered trademarks owned by Bluetooth SIG, Inc. The "Wi-Fi®" word mark and logos are registered trademarks owned by the Wi-Fi Alliance. Any use of these marks on this website does not imply any affiliation with or endorsement.