



OE A250 All In One POS System Installation Guide

[Home](#) » [oe](#) » OE A250 All In One POS System Installation Guide 

OE A250 All In One POS System Installation Guide



Contents

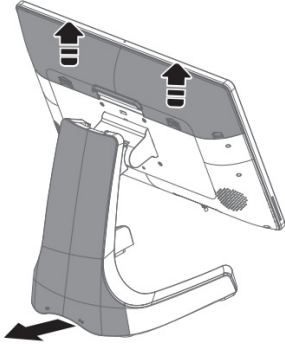
- [1 Installation Options](#)
- [2 Safety Precautions](#)
- [3 Package Contents](#)
- [4 Configuration](#)
- [5 System Connection and Power on](#)
- [6 Documents / Resources](#)
- [7 Related Posts](#)

Installation Options

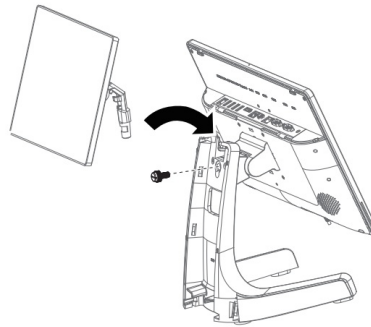
2nd Display

Please turn it on after connecting all the option items.

1. Please disassemble I/O cover and stand rear cover.

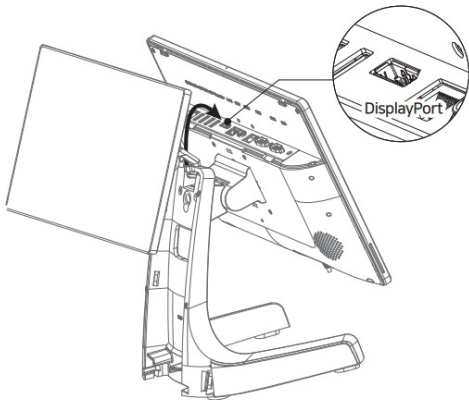


2. Please strongly tighten the plastic bolt at the rear side of stand after inserting the round-edge part of 2nd

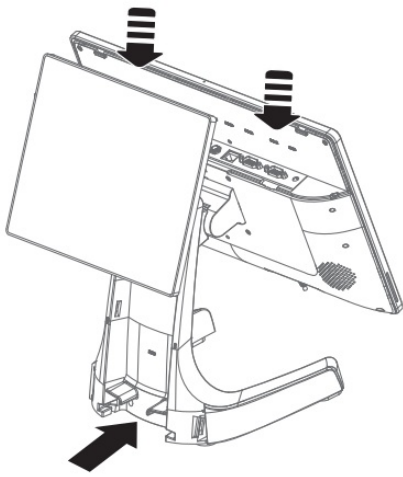


display cradle into the hole between POS system and stand.

3. Please insert cable into display port out of I/O ports.

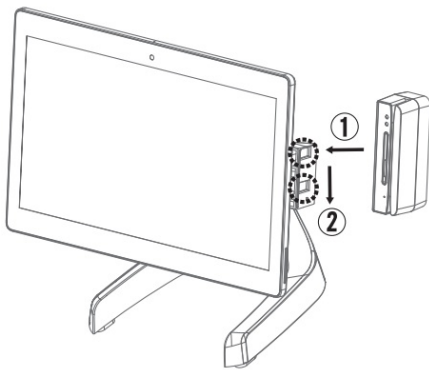


4. Please assemble I/O cover and stand rear cover.

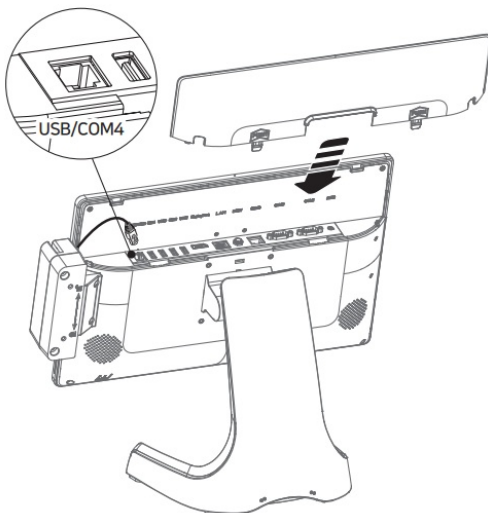


Card Reader

1. Please insert Card Reader at the groove in monitor to the arrow direction after disassembling I/O cover and set it well by pushing to the arrow direction.



2. Please close I/O cover after inserting the cable into COM4/USB port of I/O ports.



Safety Precautions

- Be sure to read the Safety Precautions before using the POS system.
- Before connecting, make sure the operating voltage is AC100~240V. Otherwise, you may damage the system.
- Do not install the system in an extremely hot or cold place.
- Avoid exposing the product in direct sunlight or in an enclosed space for a long period of time.
- Be careful not to place the system near other high-frequency electromagnetic devices; there is a strong

possibility it will lead to a system malfunction or system error.

- Do not place heavy objects on the system.
- Please do not allow external substances to be contaminated inside the system.
- Do not change the motherboard's battery by yourself. It can damage the system.
- Before disassembling the system, disconnect all power and cables.
- Do not remove or repair the system by yourself. We highly recommend an engineer's assistance or an experienced technician to open the system, especially the LCD and touch panels which could be easily broken.
- An electrical outlet is needed near the device and it should be easily accessible.
- Risk of explosion if battery is replaced by an incorrect type. Replace only with the same type of batteries recommended by the manufacturer.
- This device complies with the EMC (Electromagnetic Compatibility) Regulations, for business purposes. Distributors and users are advised of this matter.
- Do not use excessive force when using or pressing the touch panel.
Do not use objects with sharp edges on the touch panel.
- Please exchange the equipment if you mistakenly sold or purchased this product.
- Cleaning and Maintenance is relevantly necessary for POS terminal to be operated well.



POS Terminal Security Guideline

Operating System Security

System-provided and managed by the operating system's default security settings must be configured.



Touch Screen Security Guideline

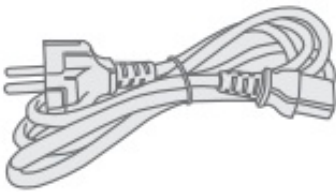
Please take special care with the touch panel as it is vulnerable to scratches.

- Do not use excessive force when using or pressing the touch panel. Do not use objects with sharp edges on the touch panel.
- Be careful not to spill any liquid on the screen.
- Turn off the power switch and unplug all cables before cleaning the screen and/or the system.
- Use a soft, clean, dry cloth for cleaning the system, and do not use chemicals or detergents.

Package Contents



A-250



Power cord



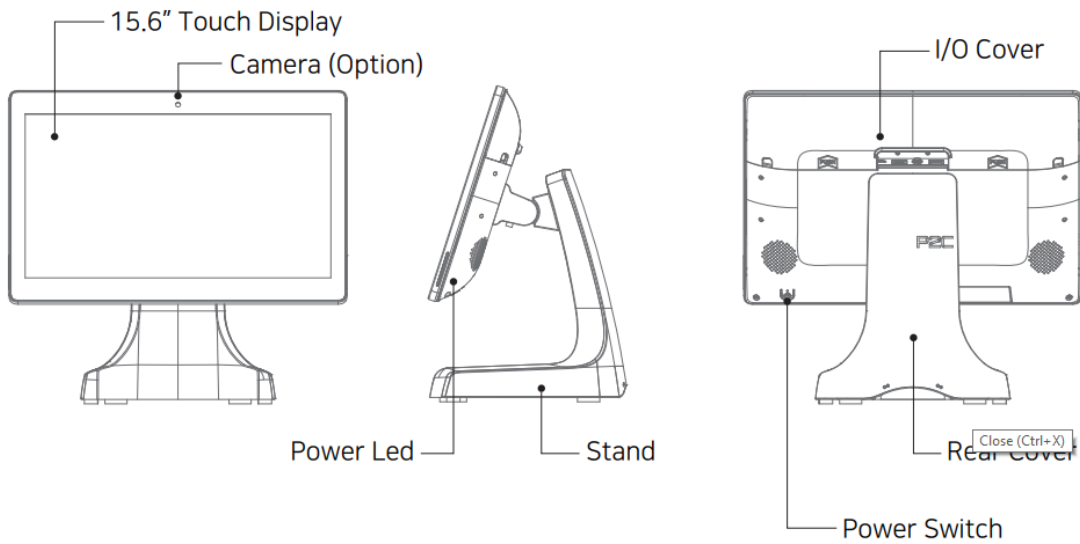
Adapter

Installation Guide

Component images are for reference only and may vary by model and option

Configuration

Front/Side/Rear view



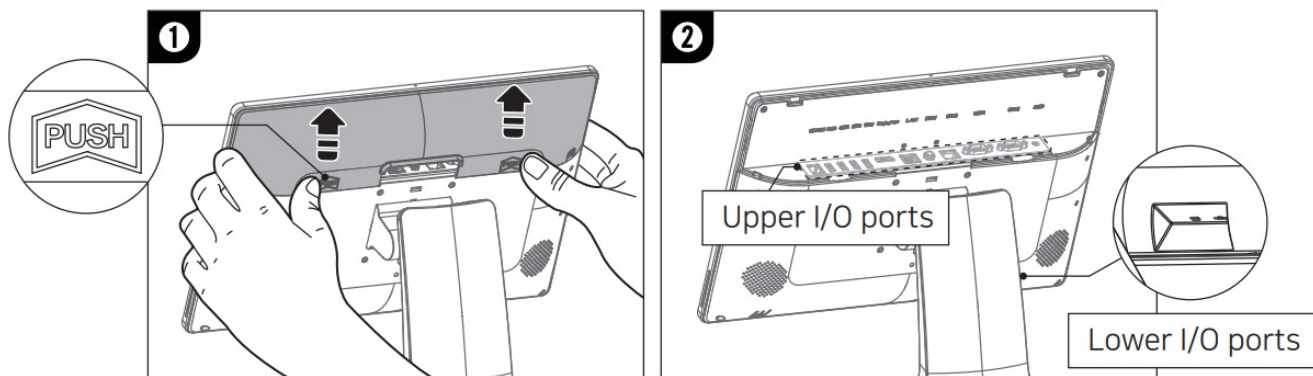
1/0 Ports

1/0 Cover Disassembly

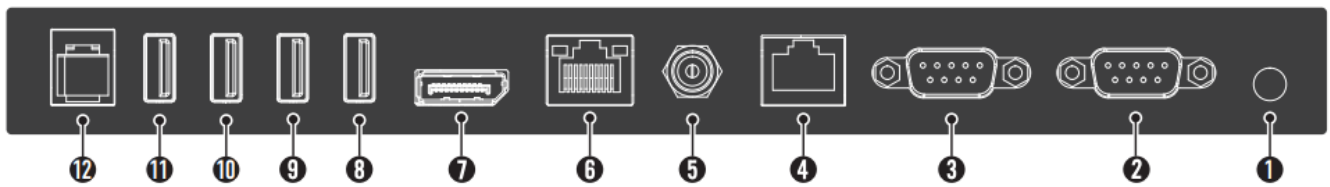


Please proceed with I/ ports connection after powering off the system.

1. 1/0 cover will be disassembled by pushing the "PUSH" part of both sides.
2. Please check I/O port position before connecting Input and Output Port



Upper I/O Ports

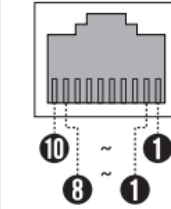


Lower I/O ports



RJ45 Pin Map 정보

Signal Name	PJ45
DCD	1
DSR	2
TXD	3
RXD	4
RTS	5
CTS	6
GND	7
DTR	8



① ~ ⑧ : RJ45
① ~ ⑩ : RJ50

1/ ports can be changed based on medals Specifications options. *®,0,, 8, ® special-purpose port From the RIS port supply to power connector used by RIS pug

Description	
1	Audio
2	seral059) oM
3	sera059) -COM2
4	SerallRISRIS0) -COM3
5	DC 12V
6	Display Port
7	USB1
8	USB2
9	USB3
10	USB4
11	Cord Reader (RJ11)- USBICOM4.
13	SD CARD
14	Micro US

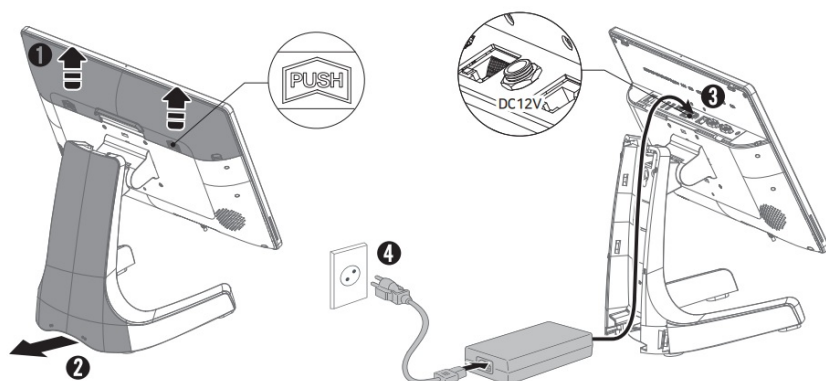
System Connection and Power on

Power Cord Connection

! Please connect power adaptor DC jack and power cord by turns after all option items are connected. 01/0 cover will be disassembled by pushing the

1. “PUSH” part of both sides.

2. Please disassemble it by pushing up stand rear cover.
3. Please insert power adaptor cable by turning it into DC 12V port at upper I/O ports.
4. Please connect power cord after assembling it in a reverse way of disassemble.



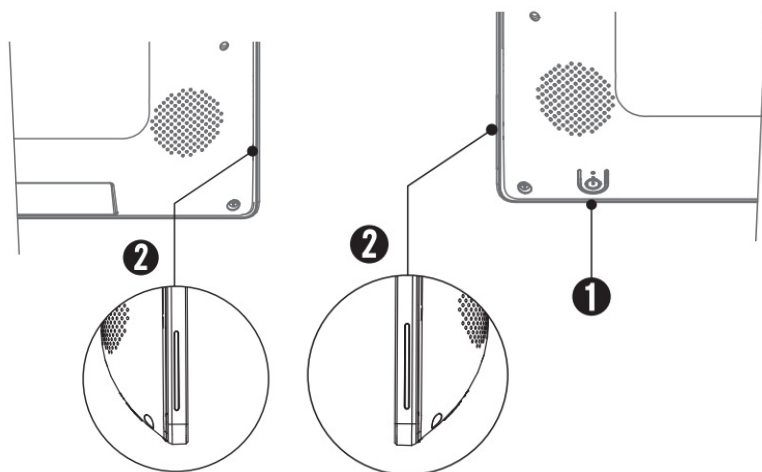
Power on



Please turn the power on after installing all optional items.

After connecting the DC Plug to POS, Plug in. The power switch (button) on the left side of the rear, and the power is turned on when the button pressed. Led lamps on the left and right are turned on.

1. Power Switch(BUTTON)
2. Power Led(GREEN)



Documents / Resources



[OE A250 All In One POS System](#) [pdf] Installation Guide

A250 All In One POS System, A250, All In One POS System, One POS System, POS System