



## ML W163 QUICK START Key Tool Keys Installation Guide

[Home](#) » [ML](#) » ML W163 QUICK START Key Tool Keys Installation Guide 

### Contents

- [1 ML W163 QUICK START Key Tool Keys](#)
- [2 Product Usage Instruction](#)
- [3 Step-by-Step Instructions](#)
- [4 Main Menu Options](#)
- [5 How to use ML Quick Start](#)
- [6 PROCEDURE TO FIX “START ERROR”](#)
- [7 PROCEDURE FOR “UNLOCK PCF”](#)
- [8 FAQ's](#)
- [9 Documents / Resources](#)
  - [9.1 References](#)
- [10 Related Posts](#)



**ML W163 QUICK START Key Tool Keys**



## Specifications

Feature	Description
Device	ML Quick Start
Compatibility	Mercedes ML-Class W163
Functions	Program Key, Fix Start Error, Unlock PCF
Special Requirements	Special remotes purchased from the online store

## Product Usage Instruction

ML Quick Start is a new device designed to program a Mercedes ML-Class W163 key quickly and easily. You just need to connect the device to the OBDII in the car. The entire process only takes a few moments. The device also fixes the common “Start Error” problem.

**Note:** The device works only with special remotes purchased in our online store!

## Step-by-Step Instructions

1. Cut a new blade and turn the ignition on.
2. Next, connect the device to OBDII.
3. Press the start button. You will go to the main menu.

## Main Menu Options

- Program Key
- Fix Start Error
- Unlock PCF

## **Procedure for Programming a New Remote and PCF Transponder**

1. Press the "Program Key" button, then select "REMOTE+PCF" button on the next screen.
2. The device starts to find modules in the car. The process will take a few seconds.
3. When the device finds the module, remove the remote from the ignition lock and insert it into the device's coil.
4. Within 5-6 seconds, if you see the message "Successfully" the programming key procedure is complete. You can now use the new key to start the car. The remote was programmed automatically and is ready to use immediately.

**Note:** If you want to program another remote, be sure to start the car with the newly programmed remote before you start the procedure for programming the next remote.

## **Procedure for Programming a New PCF 7935 Transponder**

1. Press the "Program Key" button, then select "PCF ONLY" button on the next screen.
2. The device starts to find modules in the car. The process will take a few seconds.
3. When the device finds the module, remove the key from the ignition lock and insert it into the device's coil.
4. Within 5-6 seconds, if you see the message "Successfully" the programming key procedure is complete. You can now use the new key to start the car.

**Note:** If you want to program another transponder, be sure to start the car with the newly programmed transponder before you start the procedure for programming the next transponder.

## **Procedure to Fix "Start Error"**

1. If you see "Start Error" or "Error" on the dash, make sure that the ignition key has a transponder in it.
2. If the transponder is in the key, start the "Fix Start Error" procedure.
3. Within 5-6 seconds, if you see the message "Successfully" the "Fix Start Error" procedure is complete. Now you can start the car.

## **Procedure for "Unlock PCF"**

If something went wrong during the programming procedure and the PCF is programmed, you can use this option to unlock the PCF to use it again. During this procedure, the ignition must be on!

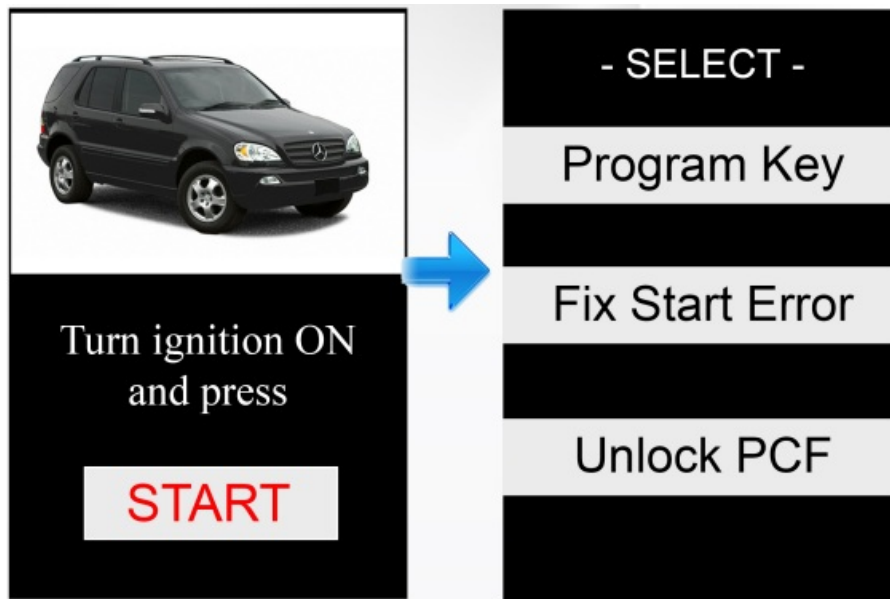
1. Press the "Unlock PCF" button.
2. Within 5-6 seconds, if you see the message "Successfully" the "Unlock PCF" procedure is complete.

## **How to use ML Quick Start**

ML QUICK START IS A NEW DEVICE, TO PROGRAM A MERCEDES ML -CLASS W163 KEV QUICKLY AND EASILY. YOU JUST NEED TO CONNECT -THE DEVICE TO THE OBDi IN THE CAR. THE ENTIRE PROCESS ONLY TAKES A FEW MOMENTS. THE DEVICE ALSO FIXES THE COMMON "START ERROR" PROBLEM.

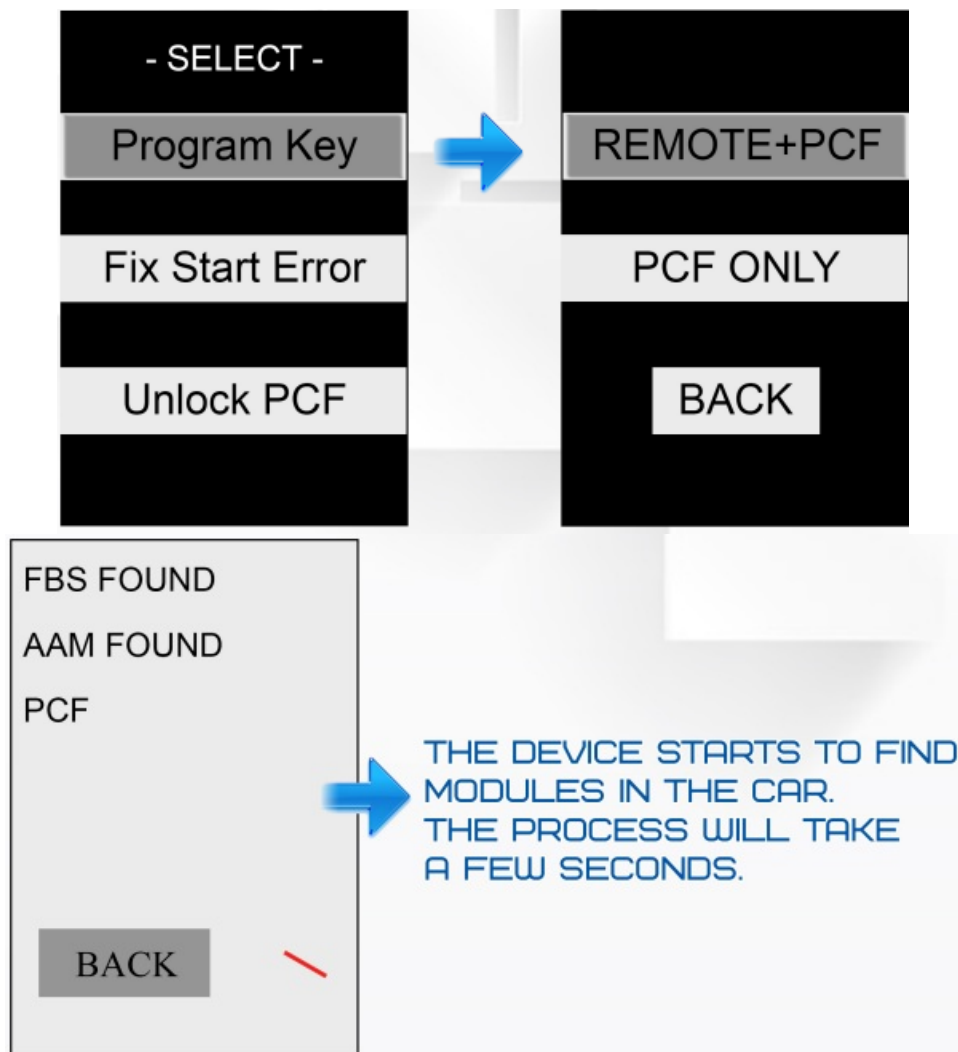
1. THE DEVICE WORKS ONLY WITH SPECIAL REMOTES PURCHASED IN OUR ONLINE STORE!
  - CUT NEW BLADE AND TURN IGNITION ON. NEXT CONNECT DEVICE TO OBDi.
2. PRESS THE START BUTTON.

- YOU WILL GO TO THE MAIN MENU.



#### PROCEDURE FOR PROGRAMMING A NEW REMOTE AND PCF TRANSPONDER

- PRESS THE "PROGRAM KEV" BUTTON, THEN SELECT THE "REMOTE+PCF" BUTTON ON THE NEXT SCREEN.





IF YOU WANT TO PROGRAM ANOTHER REMOTE, BE SURE TO START THE CAR WITH THE NEWLY PROGRAMMED REMOTE BEFORE VDU STARTS PROCEDURE FOR PROGRAMMING THE NEXT REMOTE.

AFTER PROGRAMMING THE NEW TRANSPONDER, YOU NEED TO SYNCHRONIZE THE REMOTE CONTROL

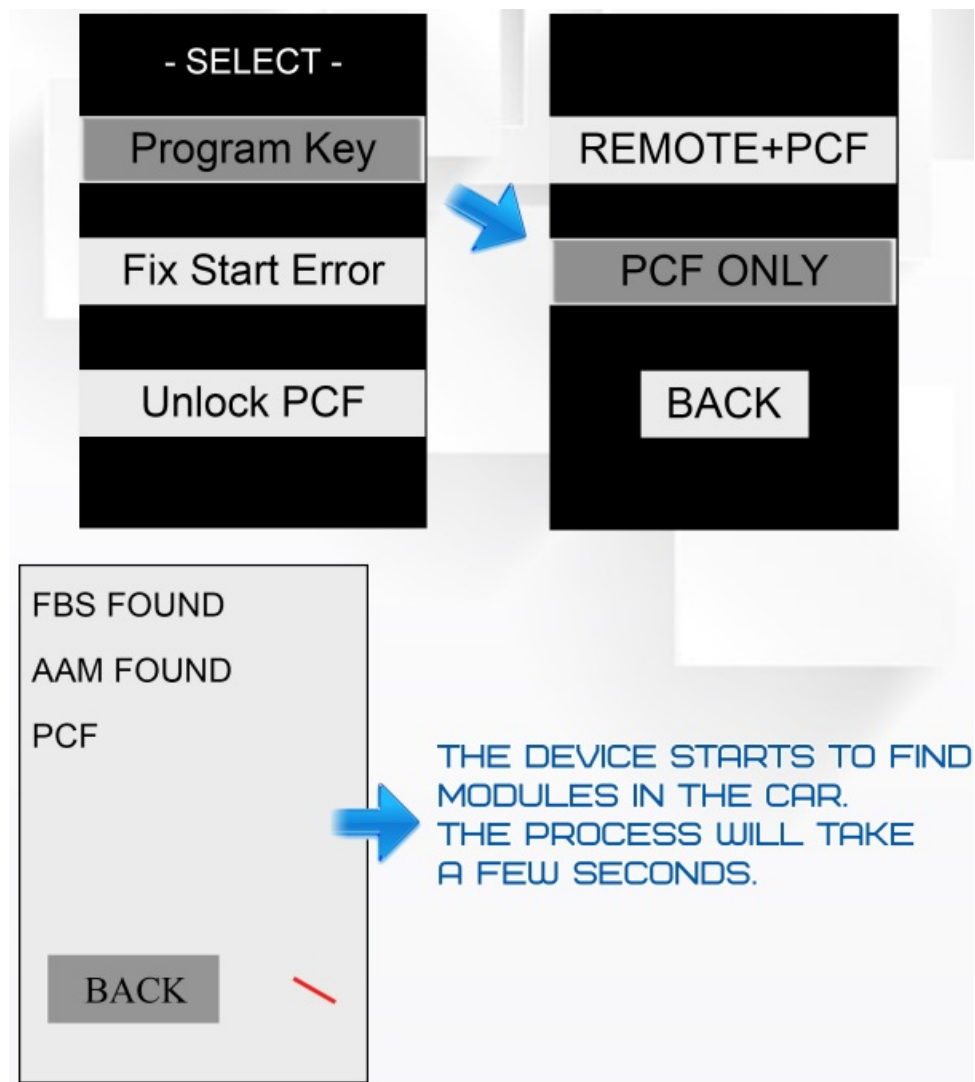


1. INSERT THE NEW KEY INTO THE IGNITION AND TURN ON THE IGNITION.
2. REMOVE THE KEY FROM THE IGNITION, NOW YOU HAVE 10 SECONDS TO COMPLETE THE NEXT STEP
3. PRESS AND HOLD THE LOCK BUTTON ON THE REMOTE CONTROL.
4. WHILE HOLDING THE LOCK BUTTON QUICKLY PRESS THE UNLOCK BUTTON 5 TIMES.
5. RELEASE ALL BUTTONS. IF THE REMOTE CONTROL DOES NOT WORK, TRY THE SYNC PROCESS

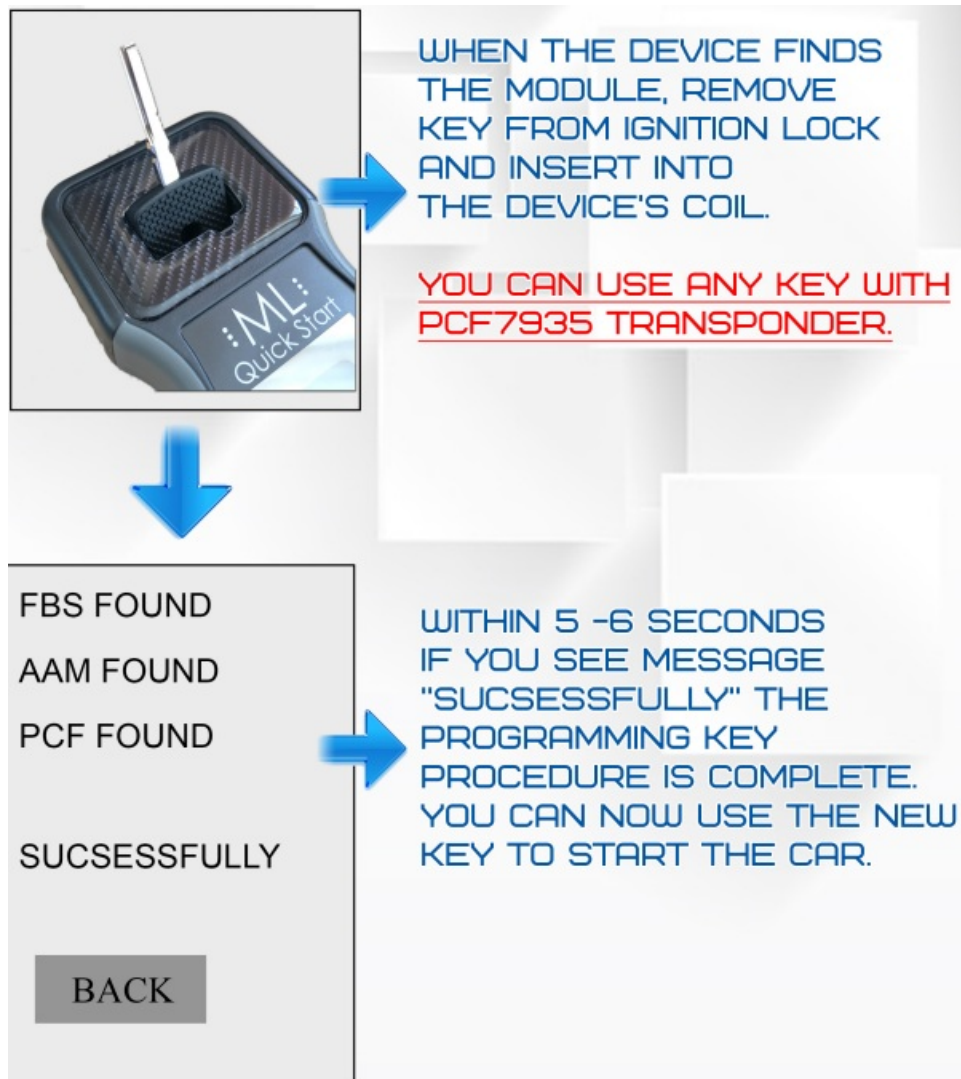
AGAIN.

**PROCEDURE FOR PROGRAMMING A NEW PCF 7935 TRANSPONDER**

PRESS THE "PROGRAM KEV" BUTTON, THEN SELECT "PCF ONLY" BUTTON ON THE NEXT SCREEN.



IF YOU WANT TO PROGRAM ANOTHER TRANSPONDER, BE SURE TO START THE CAR WITH THE NEWLY PROGRAMMED TRANSPONDER BEFORE YOU START THE PROCEDURE FOR PROGRAMMING THE NEXT TRANSPONDER.

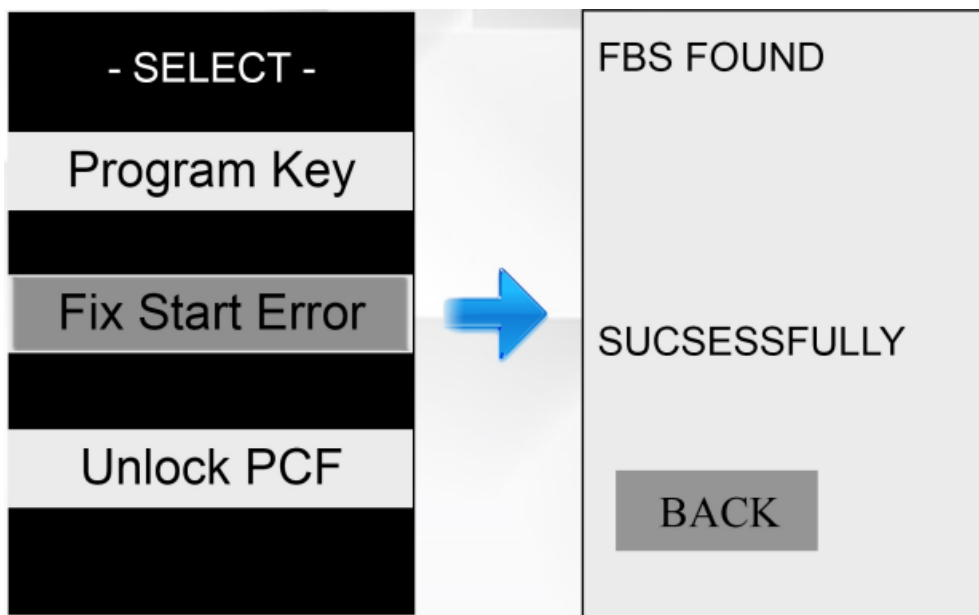


#### PROCEDURE TO FIX "START ERROR"



IF VDU SEE "START ERROR" OR "ERROR" ON THE DASH, MAKE SURE THAT THE IGNITION KEY HAS A TRANSPONDER IN IT IF THE TRANSPONDER IS IN THE KEY, START THE "FIX START ERROR" PROCEDURE.





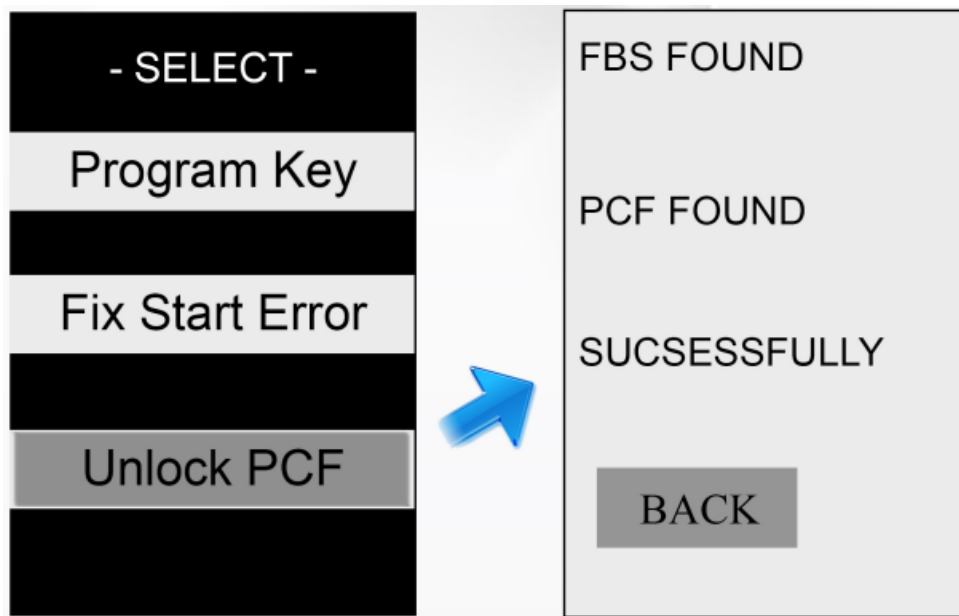
WITHIN 5-6 SECONDS IF VDU SEE MESSAGE "SUCSESSFULLY" THE "FIX START ERROR" PROCEDURE IS COMPLETE. NOW VDU CAN START THE CAR.

#### PROCEDURE FOR "UNLOCK PCF"



IF SOMETHING WENT WRONG DURING THE PROGRAMMING PROCEDURE AND THE PCF IS PROGRAMMED, YOU CAN USE THIS OPTION TO UNLOCK THE PCF TO USE IT AGAIN. DURING THIS PROCEDURE IGNITION MUST BE ON!





PRESS THE “UNLOCK PCF” BUTTON WITHIN 5-6 SECONDS IF YOU SEE THE MESSAGE “SUCSESSFULLY” THE “UNLOCK PCF” PROCEDURE IS COMPLETE.

### FAQ's

What is ML Quick Start?

ML Quick Start is a device designed to program a Mercedes ML-Class W163 key quickly and easily.

What if something goes wrong during the programming procedure?

What does the device do?

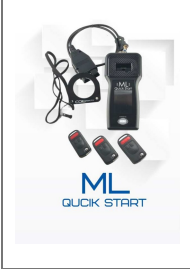
What are the special requirements for using the device?

The device works only with special remotes purchased from the online store.

How long does the programming process take?

The entire process only takes a few moments.

Documents / Resources

	<p><a href="#">ML W163 QUICK START Key Tool Keys</a> [pdf] Installation Guide</p> <p>W163 QUICK START Key Tool Keys, W163, QUICK START Key Tool Keys, START Key Tool Keys, Key Tool Keys, Tool Keys, Keys</p>
---	---

References

- [User Manual](#)

[Manuals+](#), [Privacy Policy](#)

This website is an independent publication and is neither affiliated with nor endorsed by any of the trademark owners. The "Bluetooth®" word mark and logos are registered trademarks owned by Bluetooth SIG, Inc. The "Wi-Fi®" word mark and logos are registered trademarks owned by the Wi-Fi Alliance. Any use of these marks on this website does not imply any affiliation with or endorsement.