



M3 M8*35 Floor Sweeper Instruction Manual

[Home](#) » [M3](#) » M3 M8*35 Floor Sweeper Instruction Manual 

Contents

- [1 M3 M8*35 Floor Sweeper](#)
- [2 Product Information](#)
- [3 Product Usage Instructions](#)
- [4 INSTALLATION INSTRUCTIONS](#)
- [5 Documents / Resources](#)
 - [5.1 References](#)
- [6 Related Posts](#)

M3

M3 M8*35 Floor Sweeper



Product Information

The M3 Floor Sweeper is a versatile cleaning tool designed to efficiently sweep and collect debris from various floor surfaces. It is equipped with a front glass, support frame, bracket fixing plate, back mounting plate for the ceiling, connecting R-plate, ceiling fixing pipe, headlights, roof, and reflector.

Key Features:

- Front glass for visibility and protection
- Support frame for stability
- Bracket fixing plate for secure installation
- Back mounting plate for the ceiling for added support
- Connecting R-plate for structural reinforcement
- Ceiling fixing pipe for overhead attachment
- Headlights for enhanced visibility
- Roof for weather protection
- Reflector for increased visibility

Product Usage Instructions

1. **STEP 1:** Install the front glass
 - Use Hexagon screws M8*35 (2pcs) and go through the headlight line.
 - Plug it in.
2. **STEP 2:** Install the support frame
 - Use Flanged screws M8*20 (4pcs each side) to secure the support frame.
3. **STEP 3:** Install the bracket fixing plate
 - Use Flanged screws M6*12 (4pcs in total) to attach the bracket fixing plate.
4. **STEP 4:** Install the back mounting plate for the ceiling
 - Use Flanged screws M6*12 (2pcs each side) to mount the back plate.
5. **STEP 5:** Install the connecting R-plate
 - Use Flanged screws M6*12 to secure the connecting R-plate.
6. **STEP 6:** Install the ceiling fixing pipe
 - Use Flanged screws M6*25 and M6*12 to attach the ceiling fixing pipe.
7. **STEP 7:** Install the headlights
 - Use Flanged screws M6*12 to install the headlights.
8. **STEP 8:** Install the roof
 - Use Flanged screws M6*12 to secure the roof.
9. **STEP 9:** Install the reflector
 - Use Flanged screws M8*20 to attach the reflector.

Installation is now complete, and your M3 Floor Sweeper is ready for use.

INSTALLATION INSTRUCTIONS

- **STEP 1** Install the front glass.



②Hexagon screws M8*35 (2pcs)



①Go through the headlight line



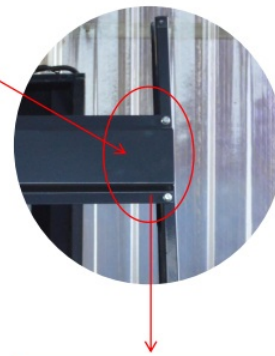
③Plug it in

- **STEP 2** Install the support frame.



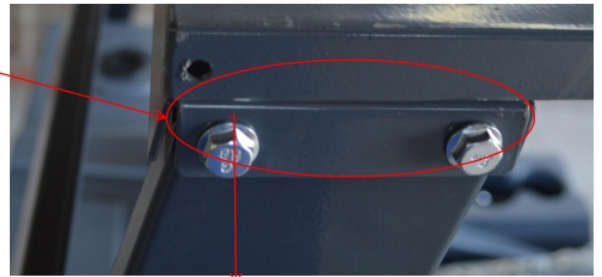
Flanged screws M8*20
(4pcs each side)

- **STEP 3** Install the bracket fixing plate.



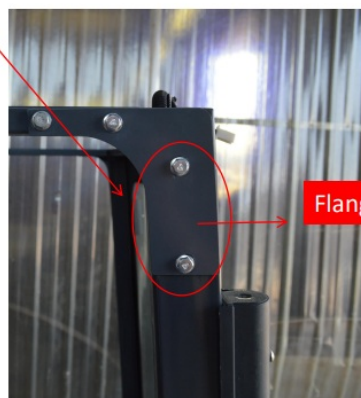
Flanged screws M6*12 (4pcs in total)

- **STEP 4** Install the back mounting plate for the ceiling.



Flanged screws M6*12 (2pcs each side)

- **STEP 5** Install connecting R-plate.

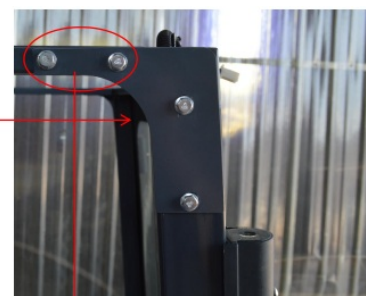


Flanged screws M6*12

- **STEP 6** Install the ceiling fixing pipe.



Flanged screws M6*25



Flanged screws M6*12

- **STEP 7** Install headlights.



Flanged screws M6*12

- **STEP 8** Install the roof.



Flanged screws M6*12

- **STEP 9** Install the reflector.



Flanged screws M8*20

Installation complete.



Documents / Resources



M3 Floor Sweeper
Assembly Instruction

[M3 M8*35 Floor Sweeper](#) [pdf] Instruction Manual
M8 35, M8 20, M6 12, M6 25, M8 35 Floor Sweeper, Floor Sweeper, Sweeper

References

- [User Manual](#)