



LG WTP3 WaoCast Audio Controller Owner's Manual

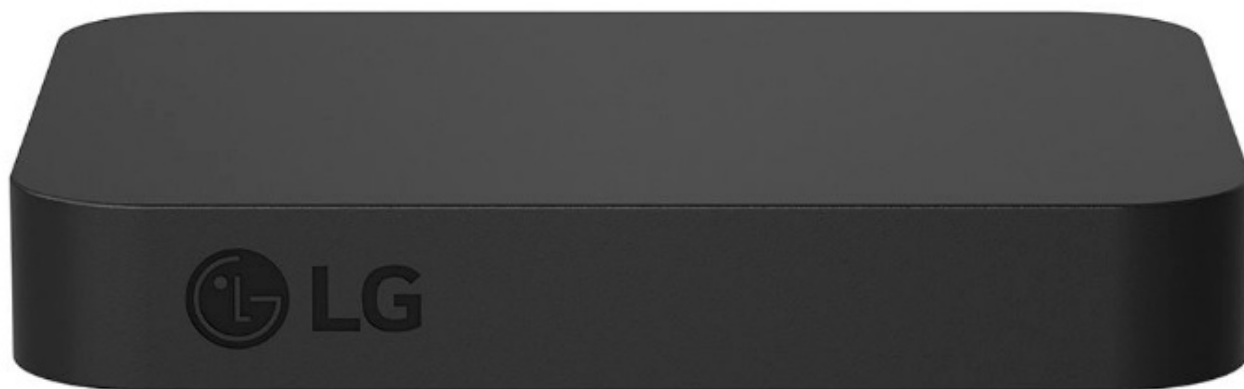
[Home](#) » [LG](#) » LG WTP3 WaoCast Audio Controller Owner's Manual 

Contents

- 1 LG WTP3 WaoCast Audio Controller Owner's
- 2 Installing and using the Product
- 3 Connecting to the TV
- 4 Supported LG Wi-Fi Sound Bar models
- 5 Connecting LG WOWCAST automatically
- 6 Connecting LG WOWCAST manually
- 7 Resetting the Products
- 8 Safety Precautions
- 9 Before Reporting Product Malfunction
- 10 Appendix
- 11 Registered Trademarks and Licenses
- 12 Open Source Software Notice Information
- 13 Handling the Product
- 14 FCC STATEMENT
- 15 Documents / Resources
 - 15.1 References
- 16 Related Posts

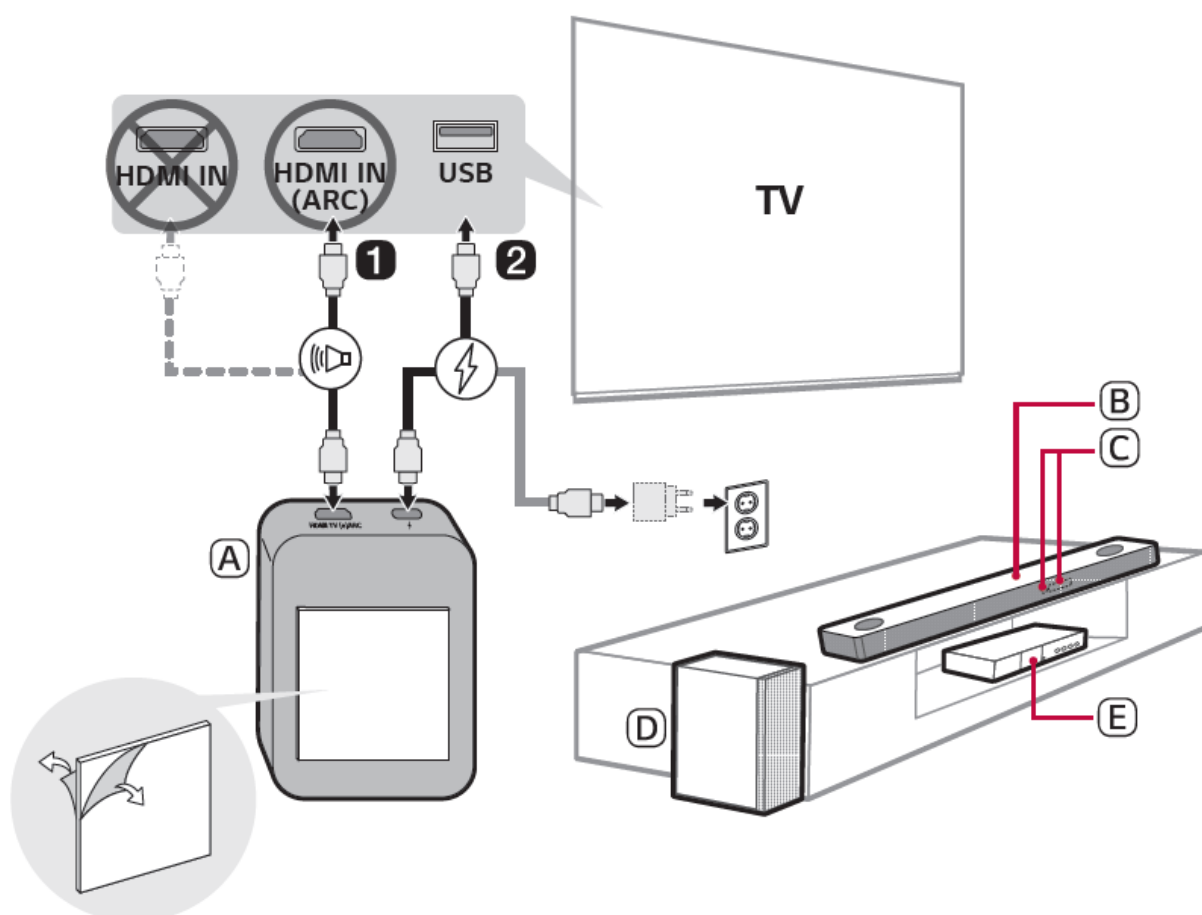


LG WTP3 WaoCast Audio Controller Owner's



Installing and using the Product

- Connect the LG WOWCAST to your TV via an HDMI cable.



- LG HOWCAST
- Soundbar
- Remote Control Receiver / Status Display
- Wireless Subwoofer – Install it close to the
- soundbar.
- External Device – (Blu-ray player, game console,
- Connect the LG WOWCAST to your TV via a USB cable for the power supply. You can also connect to an electrical outlet for a stable power supply.
- Install the LG WOWCAST on the rear panel of your TV. After attaching the double-sided foam tape on the LG

WOWCAST, fix it to the rear panel of the TV.

- On your TV's settings, set the output speaker to [HDMI (e)ARC].
- Turn on the sound bar. When the connection is automatically established with the LG WOWCAST and the sound bar, "CONNECTED" and then "LG WOWCAST" appear on the status display of the sound bar.

Manually connecting the LG WOWCAST to the sound bar ([See "Connecting LG WOWCAST manually" on page 8.) If your LG WOWCAST and the sound bar don't connect each other, the sound bar may need to reset and firmware update. If this is the case, connect them in the following order.

1. Press and hold the RESET button on the LG WOWCAST.
2. B Press and hold the Wi-Fi button or Mic mute button on the sound bar to reset the sound bar.
3. Connect the sound bar to your smartphone by using Google Home app. If you don't have the app, download the app on Google Play or the App Store and install it to your smartphone.
4. Run the Google Home app and follow the instructions. The sound bar will be connected to your smartphone and updated automatically. When the connection is automatically established with the LG WOWCAST and the sound bar, "CONNECTED" and then "LG WOWCAST" appear on the status display of the sound bar.

Connecting to the TV

You can enjoy the sound by connecting LG WOWCAST to the sound bar.

Supported LG Wi-Fi Sound Bar models

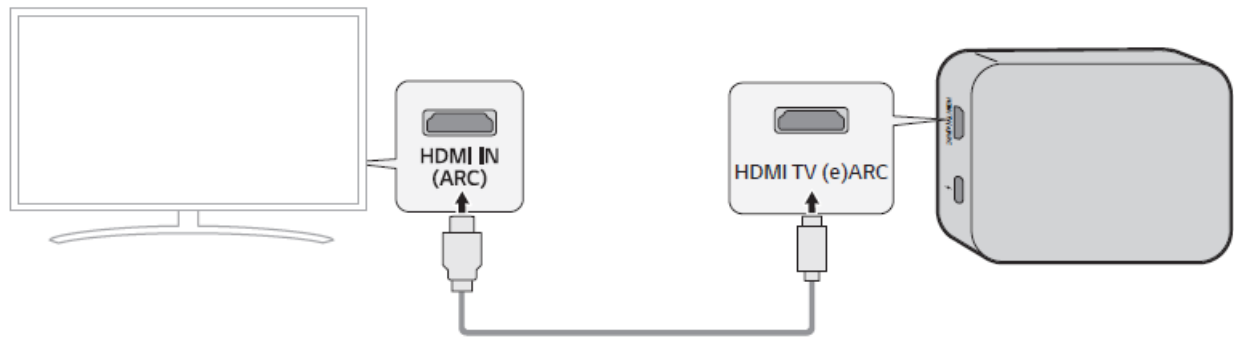
- SN11RG
- SN11R
- DSN11RG
- SN10YG
- SN10Y
- DSN10YG
- SN9YG
- SN9Y
- DSN9YG
- SN8YG
- SN8Y
- DSN8YG
- SNC75
- SP11RA
- DSP11RA
- SP9YA
- SP9A
- DSP9YA
- SP8YA
- SP8A
- DSP8YA

- SPD75YA
- SPD75A

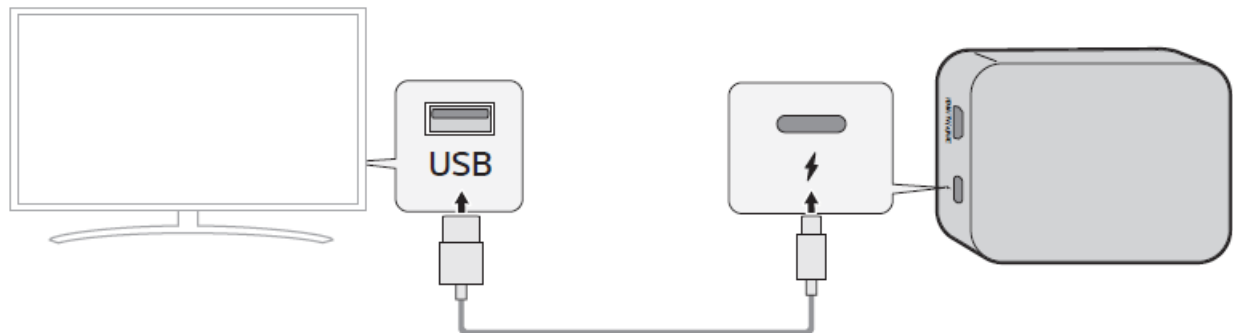
Connecting LG WOWCAST automatically

After completing installation, LG WOWCAST will automatically be connected to the sound bar. Connect the LG WOWCAST to the sound bar in the following order.

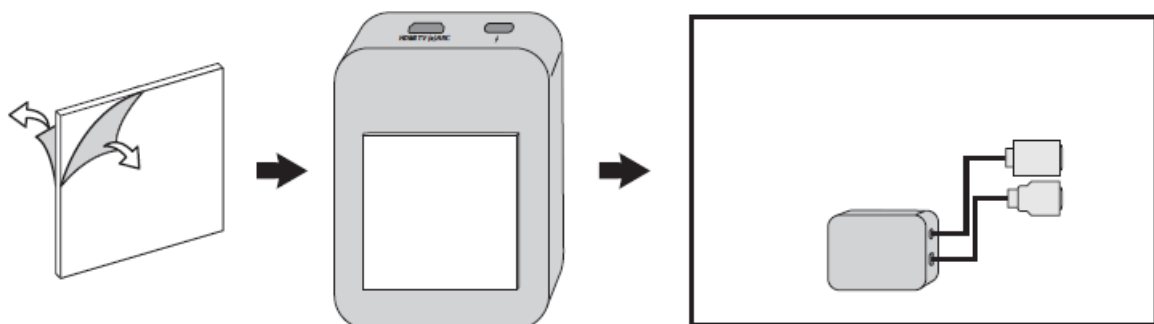
1. Using the HDMI cable, connect the HDMI TV (e)ARC terminal on the LG WOWCAST to the HDMI ARC or eARC terminal on the TV as shown in the picture.



2. Using the USB cable, connect the terminal on the LG WOWCAST to the USB terminal. Connect the USB type C plug to the terminal on the LG WOWCAST and the standard type A plug to the USB terminal of your TV.



3. Install the LG WOWCAST on the rear panel of your TV. After attaching the double-sided foam tape on the LG WOWCAST, fix it to the rear panel of the TV.



4. Press the Function / button on the remote control of the sound bar repeatedly until "OPT/HDMI ARC" appears on the status display.
5. Press the Settings button on the TV remote control to enter the [Speaker] menu and set the output speaker to [HDMI (e)ARC]. Settings and menu items may vary depending on the TV manufacturer.

When the connection is automatically established with the LG WOWCAST and the sound bar, "CONNECTED"

and then “WOWCAST” appear on the status display of the sound bar.

Note

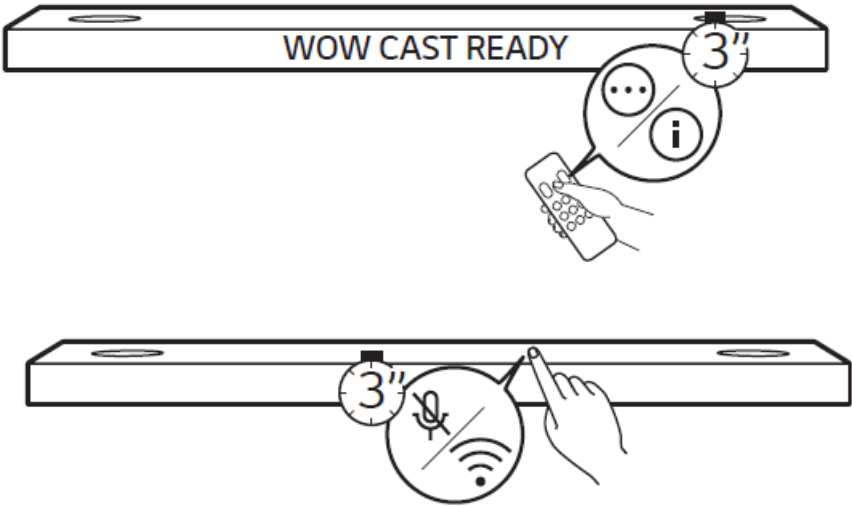
- Depending on the TV manufacturer, the time it takes for sound to come out may vary. So you can plug into the electrical outlet for a stable power supply.
- If the optical input signal and the LG WOWCAST signal attempt to connect at the same time, the LG WOWCAST signal will take priority.

Checking the connection with the LED on LG WOWCAST

You can check the connection status by looking at the LED on the LG WOWCAST.

You can check the connection status by looking at the LED on the LG WOWCAST.	
LED	Status
Blinking	Connecting in progress
On	Connected successfully
Off	No power supply

Connecting LG WOWCAST manually



- Using the HDMI cable and the USB cable, connect the LG WOWCAST to your TV. ([See “Connecting LG WOWCAST automatically” on page 6.)
- Press the Function / button on the remote control of the sound bar repeatedly until “OPT/HDMI ARC” appears on the status display.
- Press the Settings button on the TV remote control to enter the [Speaker] menu and set the output speaker to [HDMI (e)ARC]. Settings and menu items may vary depending on the TV manufacturer.

- When the connection is automatically established with the LG WOWCAST and the sound bar, “CONNECTED” and then “WOWCAST” appear on the status display of the sound bar.

Resetting the Products

If LG WOWCAST is frozen and does not work, you will need to reset the LG WOWCAST and your sound bar. If the sound bar has been reseted, you will need to connect it to your smartphone again.

How to reset

1. Press and hold the RESET button on the LG WOWCAST. The LED on the LG WOWCAST will blink and “DISCONNECTED” appear on the status display of the sound bar.
2. Press and hold the Wi-Fi button or Mic mute button on the top of the sound bar until you hear a sound signal. You will see “RESET” appear on the status display, and all wireless network settings on the sound bar will be cleared.

Note

- Once you reset the soundbar, you will also need to reconnect the product to the smartphone via Wi-Fi on the Google Home app.

Safety Precautions

Safety and Regulatory

CAUTION RISK OF ELECTRIC SHOCK DO NOT OPEN

CAUTION: TO REDUCE THE RISK OF ELECTRIC SHOCK DO NOT REMOVE COVER (OR BACK) NO USER-SERVICEABLE PARTS INSIDE REFER SERVICING TO QUALIFIED SERVICE PERSONNEL.

This lightning flash with an arrowhead symbol within an equilateral triangle is intended to alert the user to the presence of uninsulated dangerous voltage within the product's enclosure that may be of sufficient magnitude to constitute a risk of electric shock to persons. The exclamation point within an equilateral triangle is intended to alert the user to the presence of important operating and maintenance (servicing) instructions in the literature accompanying the product.

WARNING:

- TO PREVENT FIRE OR ELECTRIC SHOCK HAZARD, DO NOT EXPOSE THIS PRODUCT TO RAIN OR MOISTURE.
- Do not install this equipment in a confined space such as a book case or similar unit.
- This unit contains magnets which can be harmful to some kind of object (Ex: Magnetic card, Pacemaker etc.).

CAUTION:

- No naked flame sources, such as lighted candles, should be placed on the apparatus.
- The apparatus should not be exposed to water (dripping or splashing) and no objects filled with liquids, such as vases, should be placed on the apparatus.

- To avoid fire or electric shock, do not open the unit. contact to qualified personnel only.
- Do not leave the unit in a place near the heating appliances or subject to direct sunlight, moisture, or mechanical shock.
- Do not use volatile liquids such as insecticide spray near the unit. Wiping with strong pressure may damage the surface. Do not leave rubber or plastic products in contact with the unit for a long period of time.
- Do not leave the unit on an unstable place such as high shelves. it may fall down because of the vibration of the sound.
- Do not use high voltage products around this product. (ex. Electrical swatter) This product may malfunction due to electrical shock.
- For safety marking information including product identification and supply ratings, please refer to the main label on the bottom or the other surface of the product.

CAUTION when using this product in environments of low humidity.

- It may cause static electricity in environments of low humidity.
-
- It is recommended to use this product after touching any metal object which conducts electricity.

Symbols			
	Alternating current (AC).	1	Standby power state.
0	Direct current (DC).	!	The power is turned on.
	This is a class II equipment.		Danger voltage.

Before Reporting Product Malfunction

Troubleshooting

If you experience the following issues while using the product, please perform several checks, as they may not be malfunctions.

General Errors

Issue Solution

The product does not work properly

- Unplug the power cables and any external devices such as your TV, sound bar, or amplifier from the product, then plug them in again.
- After resetting the products, connect the LG WOWCAST and your sound bar again. ([See “Connecting LG WOWCAST manually” on page 8.)
- Please beware that previous product settings may be lost.

The power does not turn on

- Is the power cord plugged into the outlet properly? – Connect the power plug to the outlet correctly.

There is no sound

- Is the volume set to a minimum?
- Press the Volume button on the remote control to turn up the volume.
- If you are using an external device such as a set-top box, portable device, or Bluetooth device, adjust the volume of the external device.
- Is the mute function activated?
- If “MUTE” appears on the status display, the mute function is on. Press the Mute button to unmute.
- Is the correct product function selected according to the external device connected?
- Press the Function button to check if you selected the correct function.

The product volume is low

- Check the following and change the settings accordingly.
- Run the LG Sound Bar app, tap the Settings button on the first screen, and change the [DRC] function to [Off] on the next screen.
- When the product is connected to a TV, press the Settings button on the TV remote control, select the [Speaker] menu, and change the [Digital Sound Output] setting from [PCM] to [AUTO] or [BITSTREAM].
- If the product is connected to a playback device such as a DVD player or Blu-ray disc player, go to the connected device's Settings menu. Change the [Digital Sound Output] setting from [PCM] to [PRIMARY PASS-THROUGH] or [BITSTREAM]. Set the [DRC] of the connected device to [OFF].
- If the product's Night Time mode is on, turn it off by pressing the Settings button and Left/Right and then Up/Down.

Appendix

Specifications

General	
Power Requirement	Refer to the main label.
Power Consumption	Refer to the main label.
	Standby power: < 0.5 W
Dimensions (W x H x D)	Approx. 85.0 mm x 13.0 mm x 65.0 mm
Operation Temperature Range	5 °C – 40 °C
Operation Humidity Range	5 % – 60 % RH
Bus Power Supply (USB)	5 V 0 500 mA
Available Digital Input Audio Sampling Frequency	32 kHz, 44.1 kHz, 48 kHz, 88.2 kHz, 96 kHz, 176.4 kHz, 192 kHz
Available Digital Input Audio format	L-PCM, PCM-multichannel, Dolby, Dolby +, DolbyTruHD, Dolby Atmos, DTS-HD Master, DTS:X

Input/Output	
HDMI IN	19-pin (Type C, HDMI™ connection terminal) × 1

- Design and specifications are subject to change without notice.

Registered Trademarks and Licenses

All trademarks and trade names are the property of their respective owners. The terms HDMI, HDMI High-Definition Multimedia Interface, and the HDMI Logo are trademarks or registered trademarks of HDMI Licensing Administrator, Inc.

Open Source Software Notice Information

To obtain the source code under GPL, LGPL, MPL, and other open source licenses, that is contained in this product, please visit <https://opensource.lge.com>. In addition to the source code, all referred license terms, warranty disclaimers and copyright notices are available for download. LG Electronics will also provide open source code to you on CD-ROM for a charge covering the cost of performing such distribution (such as the cost of media, shipping, and handling) upon email request to opensource@lge.com. This offer is valid for a period of three years after our last shipment of this product. This offer is valid to anyone in receipt of this information.

Handling the Product

When shipping the Product

Please save the original shipping carton and packing materials. If you need to ship the product, for maximum protection, re-pack the product as it was originally packed at the factory.

Keeping the exterior surfaces clean

- Do not use volatile liquids such as insecticide spray near the product.
- Wiping with strong pressure may damage the surface.
- Do not leave rubber or plastic products in contact with the product for a long period of time.

Cleaning the product

To clean the product, use a soft, dry cloth. If the surfaces are extremely dirty, use a soft cloth lightly moistened with a mild detergent solution. Do not use strong solvents such as alcohol, benzine, or thinner, as these might damage the surface of the product. Product Description

Temperature Range	0 °C ~ 60 °C	
MAX RF OUTPUT POWER	WLAN 2.4 GHz	17.16 dBm
	5 150 MHz ~ 5 250 MHz Band	15.67 dBm
	5 250 MHz ~ 5 350 MHz Band	20.88 dBm
	5 470 MHz ~ 5 725 MHz Band	19.07 dBm
	5 725 MHz ~ 5 850 MHz Band	20.94 dBm
OPERATING FREQUENCY	WLAN 2.4 GHz	2 412 MHz ~ 2 472 MHz (802.11b/g/n(HT20))
	5 150 MHz ~ 5 250 MHz Band	5 180 MHz ~ 5 240 MHz (802.11a/n(HT20)/ac(VHT20))
		5 190 MHz ~ 5 230 MHz (802.11n(HT40)/ac(VHT40))
		5 210 MHz (802.11ac(VHT80))
	5 250 MHz ~ 5 350 MHz Band	5 260 MHz ~ 5 320 MHz (802.11a/n(HT20)/ac(VHT20))
		5 270 MHz ~ 5 310 MHz (802.11n(HT40)/ac(VHT40))
		5 290 MHz (802.11ac(VHT80))
	5 470 MHz ~ 5 725 MHz Band	5 500 MHz ~ 5 700 MHz (802.11a/n(HT20)/ac(VHT20))
		5 510 MHz ~ 5 670 MHz (802.11n(HT40)/ac(VHT40))
		5 530 MHz (802.11ac(VHT80))
	5 725 MHz ~ 5 850 MHz Band	5 745 MHz ~ 5 825 MHz (802.11a/n(HT20)/ac(VHT20))
		5 755 MHz ~ 5 795 MHz (802.11n(HT40)/ac(VHT40))
		5 775 MHz (802.11ac(VHT80))
MODULATION TYPE	WLAN 2.4 GHz	802.11b: DSSS Modulation(DBPSK/DQPSK/CCK) 802.11g/n(HT20): OFDM Modulation(BPSK/QPSK/16QAM/64QAM)
	WLAN 5 GHz	802.11a/n(HT20)/n(HT40)/ac(VHT80): OFDM Modulation(BPSK/QPSK/16QAM/64QAM)

RFOIY1PUT POWER	IVLIL>I 2.4 GHz	Antenna 0	12.32 cIBm(S02.Ilb) 14.76 dBm(SOI.Ilg) 13.96 c1Bm(S02.Iln_HT20)
		Antenna 1	13.84 cIBm(S02.Ilb) 15.34 cIBm(S02.Ilg) 14.34 c1Bm(S02.I In_HT20)
		Multiple Antenna	17.16 dBm(SOI.Iln HTIO)
	5 150 Mliz- 5 250 Mliz Band	Antenna0	15.67 dBm(SOI.Ih) 10.81 c1Bm(S02.Iln_HT20) 11.06 c1Bm(S02.Iln_HT40) 3.04 c1Bm(S02.I lac_VHTSO)
		Antenna 1	15.45 cIBm(S02.Ila) 10.64 c1Bm(S02.I In_HT20) 10.97 c1Bm(S02.Iln_HT40) 2.17 c1Bm(S02.Ilac_VHTSO)
		Multiple Antenna	13.74 c1Bm(S02.Iln_HT20) 14.03 dBm(SOI.Iln HT40)
			5.64 c1Bm(S02.I lac_VHTSO)
		Antenna0	16.68 cIBm(S02.Ila) 15.16 c1Bm(S02.I In_HT20) 18.48 dBm(SOI.Iln HT40) 5.31 c1Bm(S02.Ilac_VHTSO)
	5 250Mliz- 5 350 Mliz Band	Antenna 1	15.61 cIBm(S02.11a) 12.96 c1Bm(S02.I In_HT20) 17.15 c1Bm(S02.I In_HT40) 2.96 c1Bm(S02.I lac_VHTSO)
		Multiple Antenna	17.21 c1Bm(S02.Iln_HT20) 10.88 dBm(SOI.Iln HT40)
			7.20 c1Bm(S02.Ilac_VHTSO)

RFOIY1PUT POWER	5 470MHz- 5 725 MHz Band	Antenna0	17.58 c1Bm(S02.l la) 15.36 c1Bm(S02.l ln_HT20) 15.93 c1Bm(S02.l ln_HT40) 5.10 c1Bm(S02.lhe_VHTS0)
		AntennaO_Straddle	16.58 c1Bm(S02.l la) 14.06 c1Bm(S02.l ln_HT20) 9.9S c1Bm(S02.l ln_HT40) 4.57 c1Bm(S02.lhe_VHTS0)
		Antenna 1	18.37 dBm(S01.lh) 15.29 c1Bm(S02.l ln_HT20) 16.18 c1Bm(S02.l ln_HT40) 4.S3 c1Bm(S02.lhe_VHTS0)
		Antenna I_Straddle	16.90 c1Bm(S02.l la) 13.S9 c1Bm(S02.l ln_HT20) 9.43 c1Bm(S02.l ln_HT40) 4.7S c1Bm(S02.lhe_VHTS0)
		Multiple Antenna	18.20 c1Bm(S02.l ln_HT20) 19.07 dBm(S01.l ln_HT40)
			7.9S c1Bm(S02.lhe_VHTS0)
		Multiple Antenna –Straddle	16.99 c1Bm(S02.l ln_HT20) 12.72 c1Bm(S02.l ln_HT40) 7.69 c1Bm(S02.lhe_VHTS0)

RFOIY"TPUT POWER	5 725MHz- 5 S50 MHz Band	Antenna 0	19.37 dBm(SOI.lb) 1S.00 dBm(S02.I ln_HT20) 16.10 dBm(S02.I ln_HT40) 7.67 dBm(S02.lhc_VHTSO)
		AntennaO_Straddle	8.65 dBIII(802.lh) 6.79 dBm(S02.I ln_HTIO) -2.25 dBm(S02.lln_HT40) -12.51 dBm(S02.1lac_VHTSO)
		Antenna 1	19.11 dBm(S02.lh) 17.S5 dBm(S02.I ln_HT20) 15.60 dBm(S02.I ln_HT40) 7.60 dBm(S02.lhc_VHTSO)
		Antennal_Straddle	8.S9 dBIII(802.lh) 6.26 dBm(S02.lln_HT10) -2.75 dBm(S02.I ln_HT40) -10.04 dBm(S02.1lac_VHTSO)
		Multiple Antenna	10.94 dBm(SO!.lln HTIO}
			1S.S7 dBm(S02.I ln_HT40) 10.65 dBm(S02.lhc_VHTSO)
		Multiple Antenna -Straddle	9.54 dBm(S02.lln_HT10) 0.52 dBm(S02.lln_HT40) -S.09 dBm(S02. llac_VHTSO)

ANTENNA TYPE		Antenna0	PCB Antenna
		Antenna 1	
ANTENNA GAIN	WLAN2.4GHz	Antenna0	0.61 dBi
		Antenna 1	0.90 dBi
		Multiple Antenna.	3.77 dBi
	5 00MHz~ 5 250 MHz B,nd	Antenna0	0.30 dBi
		Antenna 1	0.65 dBi
		Multiple Antenna	3.49 dBi
	5250MHz~ 5 350 MHz B,nd	Antenna0	0.30 dBi
		Antenna 1	0.28 dBi
		Multiple Antenna.	3.30 dBi
	5470MHz~ 5 725 MHz B,nd	Antenna0	0.70 dBi
		Antenna 1	0.67 dBi
		Multiple Antenna.	3.70 dBi
	5 725 MHz~ 5 850 MHz B,nd	Antenna0	0.66 dBi
		Antenna 1	0.62 dBi
		Multiple Antenna	3.65 dBi
List of each Osc. or crystal			
Freq.(Freq. =1 MHz)		26 MHz, 27 MHz	

FCC STATEMENT

FCC Information to User

This equipment has been tested and found to comply with the limits for a Class B digital device, pursuant to Part 15 of the FCC Rules. These limits are designed to provide reasonable protection against harmful interference in a residential installation. This equipment generates, uses and can radiate radio frequency energy and, if not installed and used in accordance with the instructions, may cause harmful interference to radio communications. However, there is no guarantee that interference will not occur in a particular installation. If this equipment does cause harmful interference to radio or television reception, which can be determined by turning the equipment off and on, the user is encouraged to try to correct the interference by one of the following measures:

- Reorient or relocate the receiving antenna.
- Increase the separation between the equipment and receiver.

- Connect the equipment into an outlet on a circuit different from that to which the receiver is connected.
- Consult the dealer or an experienced radio/TV technician for help.

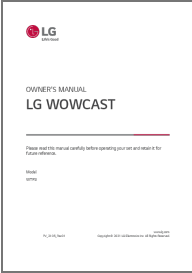
Caution

Modifications not expressly approved by the party responsible for compliance could void the user’s authority to operate the equipment.
FCC Compliance Information: This device complies with Part 15 of the FCC Rules. Operation is subject to the following two conditions: (1) This device may not cause harmful interference, and (2) this device must accept any interference received, including interference that may cause undesired operation.

IMPORTANT NOTE:

FCC RF Radiation Exposure Statement:
This equipment complies with FCC RF radiation exposure limits set forth for an uncontrolled environment. This equipment should be installed and operated with a minimum distance of 20 centimeters between the radiator and your body. This transmitter must not be co-located or operating in conjunction with any other antenna or transmitter.French Canadian Compliance Statements “Operation is subject to the following two conditions: (1) this device may not cause interference, and (2) this device must accept any interference, including interference that may cause undesired operation of the device.” “This Class B digital apparatus complies with Canadian ICES-003.”“This device and its antenna(s) must not be co-located or operating in conjunction with any other antenna or transmitter.

Documents / Resources

	<p>LG WTP3 WaoCast Audio Controller [pdf] Owner's Manual WTP3, BEJ-WTP3, BEJWTP3, WTP3, WaoCast Audio Controller</p>
--	--

References

-  [LG Open Source](#)