



# LG QNED81 Smart LED Display User Guide

[Home](#) » [LG](#) » LG QNED81 Smart LED Display User Guide 

## Contents

- [1 LG QNED81 Smart LED Display](#)
- [2 Product Information](#)
- [3 Specifications](#)
- [4 Product Usage Instructions](#)
- [5 WHATS IN THE BOX](#)
- [6 INSTALLATION INSTRUCTIONS](#)
- [7 CONNECTIONS](#)
- [8 BATTERY](#)
- [9 POWER ON/OFF](#)
- [10 DIMENSIONS](#)
- [11 QR CODE](#)
- [12 Documents / Resources](#)
- [13 Related Posts](#)



## LG QNED81 Smart LED Display



## Product Information

The QNED81\* and QNED82\* are TV models produced by the manufacturer. These TVs come in two sizes: 55 inches and 65 inches. The product manual code is MFL718796022204REV01.

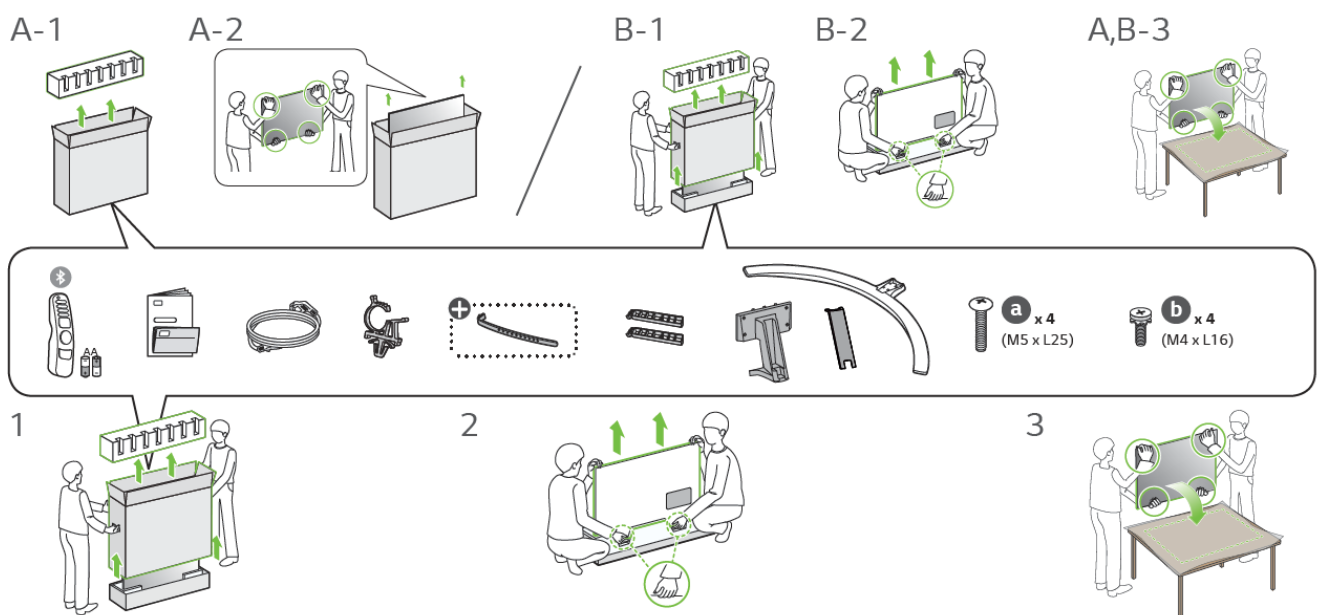
## Specifications

- **55QNED81/82\* dimensions:** 1233 x 716 x 44.2 mm
- **65QNED81/82\* dimensions:** 1452 x 839 x 44.3 mm
- **Weight:** 17.9 kg (55 inch) and 26.2 kg (65 inch)
- **Power requirement:** AC 100-240 V~ 50/60 Hz
- **VESA mount compatibility:** 300 x 300 mm with M6 screws

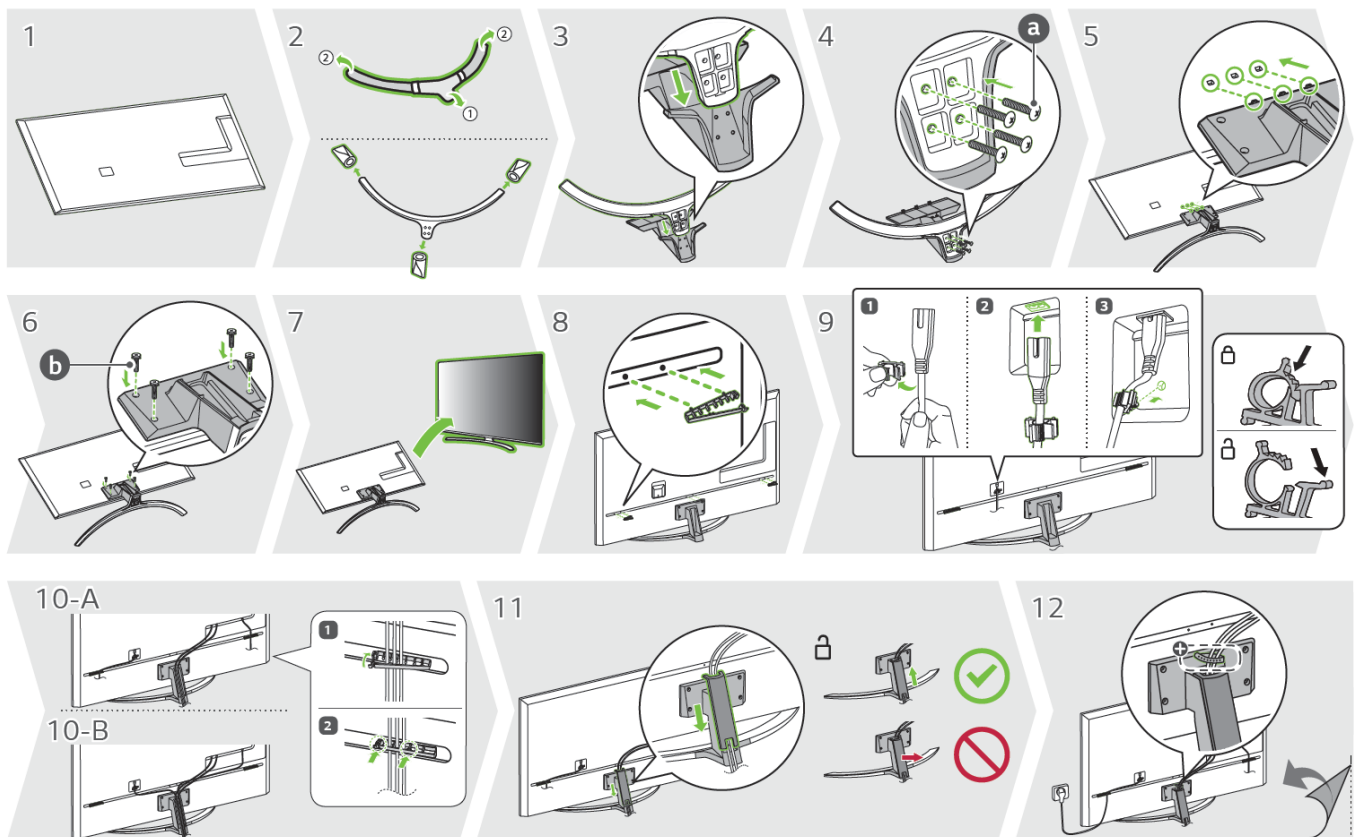
## Product Usage Instructions

1. Place the TV on a flat and stable surface.
2. If you are mounting the TV on a wall, ensure that it is securely mounted using a VESA mount compatible with the TV's dimensions (300 x 300 mm with M6 screws).
3. Connect the power cord to the TV and plug it into an electrical outlet with a voltage of AC 100-240 V~ 50/60 Hz.
4. Connect any external devices such as a cable box or gaming console to the TV using the appropriate cables.
5. Press the power button on the remote control or on the TV to turn it on.
6. Use the remote control to navigate through the TV settings and select your preferred language, time zone, and other settings.
7. You can now start watching TV or using any connected devices.

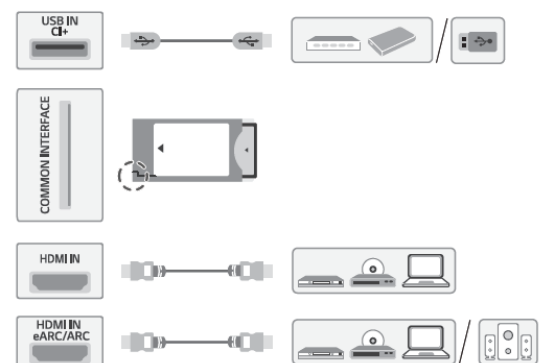
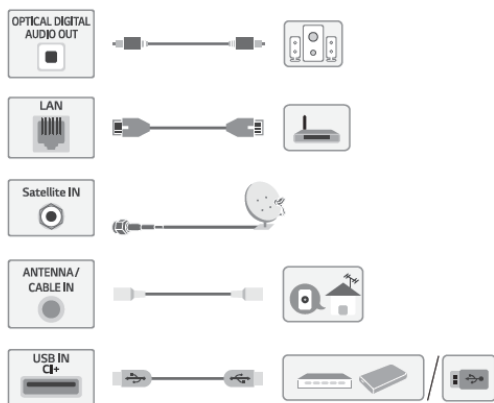
## WHATS IN THE BOX

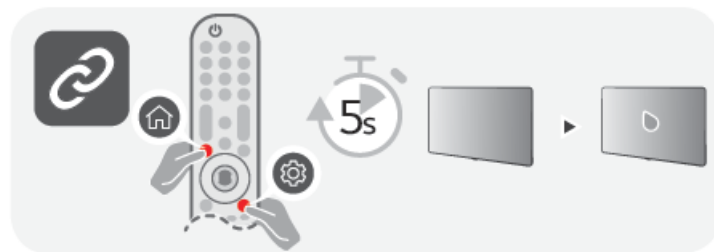


## INSTALLATION INSTRUCTIONS

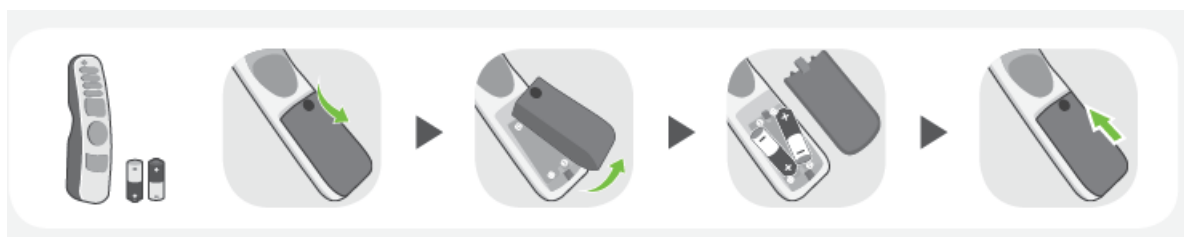


## CONNECTIONS





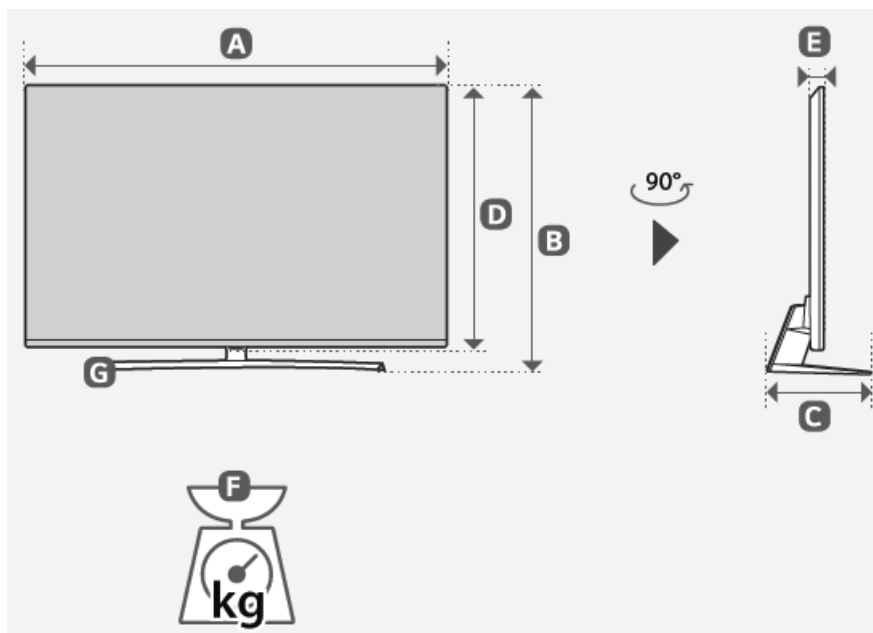
## BATTERY



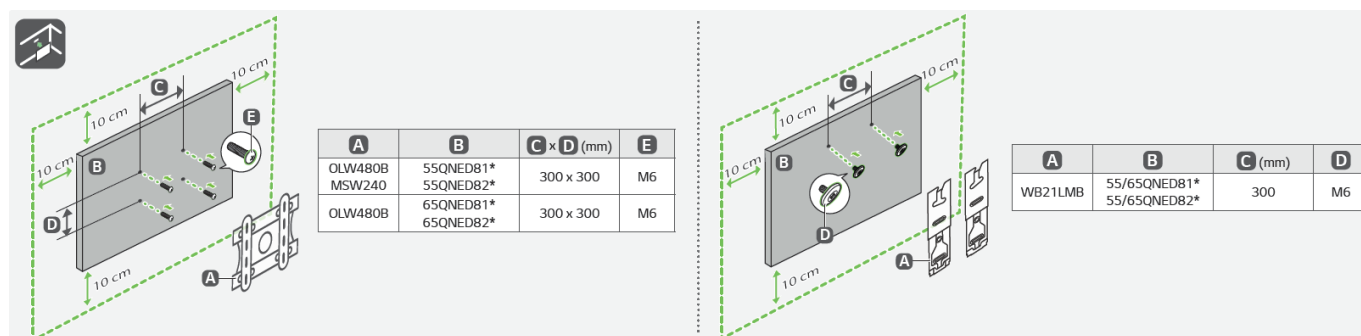
## POWER ON/OFF



## DIMENSIONS



	A	B	C	D	E	F	F G
55QNED813QA 55QNED816QA 55QNED819QA 55QNED823QB 55QNED826QB 55QNED829QB	1233	781	271	716	44.2	17.9	16.3
65QNED813QA 65QNED816QA 65QNED819QA 65QNED823QB 65QNED826QB 65QNED829QB	1452	911	336	839	44.3	26.2	24.5
Power requirement				AC 100-240 V~ 50/60 Hz			



Read Safety and Regulatory. Depending on model

## QR CODE



[www.lg.com/support](http://www.lg.com/support)

## Documents / Resources

A thumbnail image showing the cover of the LG QNED81 Smart LED Display User Guide, featuring various icons and a diagram of the display.	<p><a href="#">LG QNED81 Smart LED Display</a> [pdf] User Guide QNED81, QNED82, QNED81 Smart LED Display, QNED81, Smart LED Display, LED Display, Display</p>
--	---

[Manuals+](#)