

# LG LK75C Ice Maker Owner's Manual

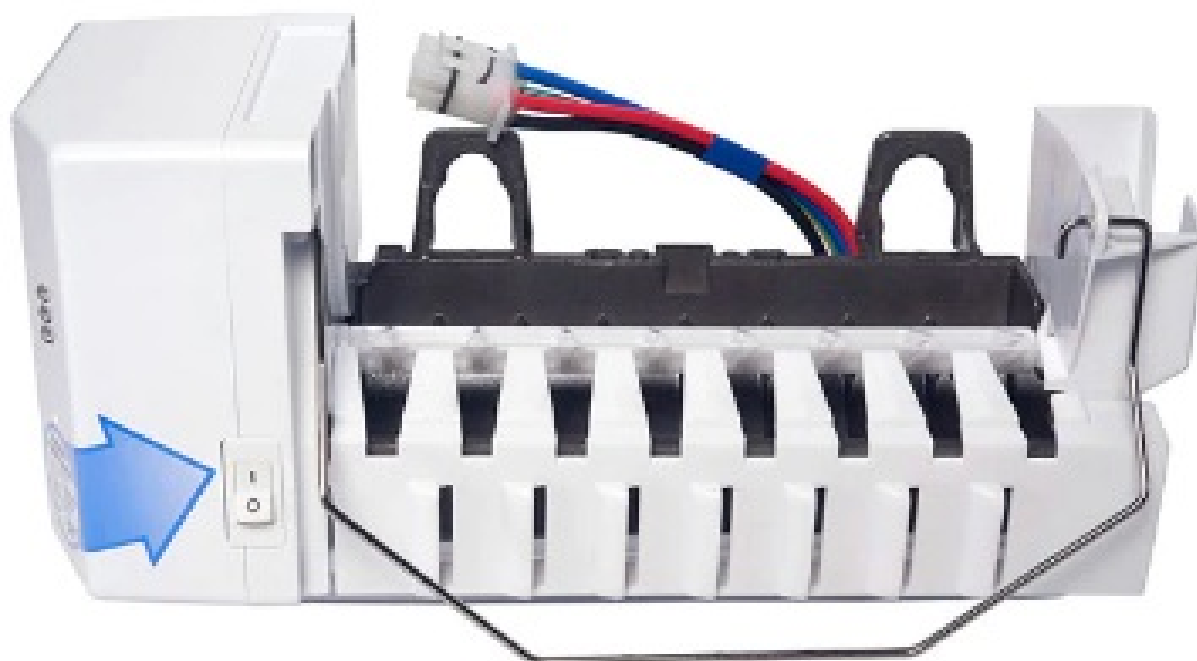
[Home](#) » [LG](#) » LG LK75C Ice Maker Owner's Manual

## Contents [ [hide](#) ]

- 1 LG LK75C Ice Maker Owner's
- 2 WARRANTY
- 3 IMPORTANT SAFETY INSTRUCTIONS
- 4 BEFORE YOU BEGIN
- 5 INTRODUCTION TO THE AUTOMATIC ICEMAKER
- 6 CONTENTS OF KIT
- 7 ICEMAKER INSTALLATION
- 8 WATER VALVE INSTALLATION
- 9 FILL TUBE INSTALLATION
- 10 CARE
- 11 TROUBLESHOOTING GUIDE
- 12 Documents / Resources
  - 12.1 References
- 13 Related Posts



LG LK75C Ice Maker Owner's



## WARRANTY

### LG ELECTRONICS CANADA, INC. LG REFRIGERATOR LIMITED WARRANTY – Canada

**WARRANTY:** Should your LG Ice Maker Kit (“Product”) fail due to a defect in material or workmanship under normal home use during the warranty period set forth below, LG Canada will at its option repair or replace the Product upon receipt of proof of original retail purchase.

This warranty is valid only to the original retail purchaser of the product and applies only to a Product distributed in Canada by LG Canada or an authorized Canadian distributor. The warranty only applies to Products located and used within Canada.

#### LG Icemaker Kit Warranty Period

<b>WARRANTY PERIOD:</b> (Note: If the original date of purchase cannot be verified, the warranty will begin ninety (90) days from the date of manufacture of the ice maker).		
Product	Parts	Labor
Icemaker Kit	1 year	1 year [In-Home Service]

- Replacement products and parts are warranted for the remaining portion of the original warranty period or ninety (90) days, whichever is greater.
- Replacement products and parts may be new or remanufactured.
- LG Authorized Service Center warranties their repair work for thirty (30) days.

LG CANADA’S SOLE LIABILITY IS LIMITED TO THE WARRANTY SET OUT ABOVE. EXCEPT AS EXPRESSLY PROVIDED ABOVE, LG CANADA MAKES NO AND HEREBY DISCLAIMS ALL OTHER WARRANTIES AND

CONDITIONS RESPECTING THE PRODUCT, WHETHER EXPRESS OR IMPLIED, INCLUDING, BUT NOT LIMITED TO, ANY IMPLIED WARRANTY OR CONDITION OF MERCHANTABILITY OR FITNESS FOR A PARTICULAR PURPOSE AND NO REPRESENTATIONS SHALL BE BINDING ON LG CANADA. LG CANADA DOES NOT AUTHORIZE ANY PERSON TO CREATE OR ASSUME FOR IT ANY OTHER WARRANTY OBLIGATION OR LIABILITY IN CONNECTION WITH THE PRODUCT. TO THE EXTENT THAT ANY WARRANTY OR CONDITION IS IMPLIED BY LAW, IT IS LIMITED TO THE EXPRESS WARRANTY PERIOD ABOVE. LG CANADA, THE MANUFACTURER OR DISTRIBUTOR SHALL NOT BE LIABLE FOR ANY INCIDENTAL, CONSEQUENTIAL, SPECIAL, DIRECT OR INDIRECT DAMAGES, LOSS OF GOODWILL, LOST PROFITS, PUNITIVE OR EXEMPLARY DAMAGES OR ANY OTHER DAMAGE, WHETHER ARISING DIRECTLY OR INDIRECTLY FROM ANY CONTRACTUAL BREACH, FUNDAMENTAL OR OTHERWISE, OR FROM ANY ACTS OR OMISSIONS, TORT, OR OTHERWISE. This warranty gives you specific legal rights. You may have other rights which may vary from province to province depending on applicable provincial laws. Any term of this warranty that negates or varies any implied condition or warranty under provincial law is severable where it conflicts with provincial law without affecting the remainder of this warranty's terms.

#### **THIS LIMITED WARRANTY DOES NOT COVER:**

1. Service trips to deliver, pick up, or install the product; instructing a customer on operation of the product; repair or replacement of fuses or correction of wiring, or correction of unauthorized repairs/installation.
2. Failure of the product to perform during power failures and interruptions or inadequate electrical service.
3. Damage caused by leaky or broken water pipes, frozen water pipes, restricted drain lines, inadequate or interrupted water supply or inadequate supply of air.
4. Damage resulting from operating the Product in a corrosive atmosphere or contrary to the instructions outlined in the Product owner's manual.
5. Damage to the Product caused by accidents, pests and vermin, lightning, wind, fire, floods, or acts of God.
6. Damage resulting from the misuse, abuse, improper installation, repair, or maintenance of the Product. Improper repair includes use of parts not approved or specified by LG Canada.
7. Damage or product failure caused by unauthorized modification or alteration, or use for other than its intended purpose, or resulting from any water leakage due to improper installation.
8. Damage or Product failure caused by incorrect electrical current, voltage, commercial or industrial use, or use of accessories, components, or cleaning products that are not approved by LG Canada.
9. Damage caused by transportation and handling, including scratches, dents, chips, and/or other damage to the finish of your product, unless such damage results from defects in materials or workmanship and is reported within one (1) week of delivery.
10. Damage or missing items to any display, open box, discounted, or refurbished Product.
11. Products with original serial numbers that have been removed, altered, or cannot be readily determined. Model and Serial numbers, along with original retail sales receipt, are required for warranty validation.
12. Increases in utility costs and additional utility expenses.
13. Replacement of consumable parts.
14. Repairs when your Product is used in other than normal and usual household use (including, without limitation, commercial use, in offices or recreational facilities) or contrary to the instructions outlined in the Product owner's manual.
15. Costs associated with removal of the Product from your home for repairs.
16. The removal and reinstallation of the Product if it is installed in an inaccessible location or is not installed in accordance with published installation instructions, including the Product owner's and installation manuals.
17. Accessories to the Product such as door bins, drawers, handles, shelves, etc. Also excluded are parts besides those that were originally included with the Product.

**All costs associated with the above excluded circumstances shall be borne by the consumer.**

For complete warranty details and customer assistance, please call or visit our website: Call 1-888-542-2623 (24 hours a day, 365 days a year) and select the appropriate option from the menu or visit our website at <http://www.lg.com>

Write your warranty information below: Product Registration Information:

- Model:
- Serial Number:
- Date of Purchase:

## **IMPORTANT SAFETY INSTRUCTIONS**

This guide contains many important safety messages. Always read and obey. This is the safety alert symbol. It alerts you to safety messages that inform you of hazards that can kill or hurt you or others, or cause damage to the product. All safety messages will be preceded by the safety alert symbol and the hazard signal word DANGER, WARNING, or CAUTION. These words mean:

- **DANGER** You will be killed or seriously injured if you do not follow instructions.
- **WARNING** You can be killed or seriously injured if you do not follow instructions.
- **CAUTION** Indicates an imminently hazardous situation which, if not avoided, may result in minor or moderate injury, or product damage only All safety messages will identify the hazard, tell you how to reduce the chance of injury and tell you what can happen if the instructions are not followed.

## **WARNING**

**IMPORTANT:** Please read carefully all instructions before using. To reduce the risk of fire, electric shock or injury to persons when using your product, basic safety precautions should be followed, including the following. Read all instructions before using this appliance.

- NEVER unplug your refrigerator by pulling on the power cord. Always grip the plug firmly and pull it straight out from the outlet.
- When moving your refrigerator away from the wall, be careful not to roll over or damage the power cord in any way.
- Do not crush or damage the water line.
- Keep fingers out of 'pinch point' areas; clearances between the doors and cabinet are necessarily small. Be careful when you open the doors when children are in the area.
- Unplug your refrigerator before cleaning or making any repairs.

**NOTE:** We strongly recommend that any servicing be performed by a qualified individual.

- The refrigerator-freezer should be positioned so that the power supply plug is accessible for quick disconnection if an accident happens.
- For personal safety, this appliance must be properly grounded. Have the wall outlet and the circuit checked by a qualified electrician to make sure the outlet is properly grounded.
- For refrigerators with an automatic icemaker, avoid contact with the moving parts of the ejector mechanism and

with the heating element that releases the cubes. DO NOT place fingers or hands on the automatic ice making mechanism while the refrigerator is plugged in.

## BEFORE YOU BEGIN

Read these instructions completely and carefully.

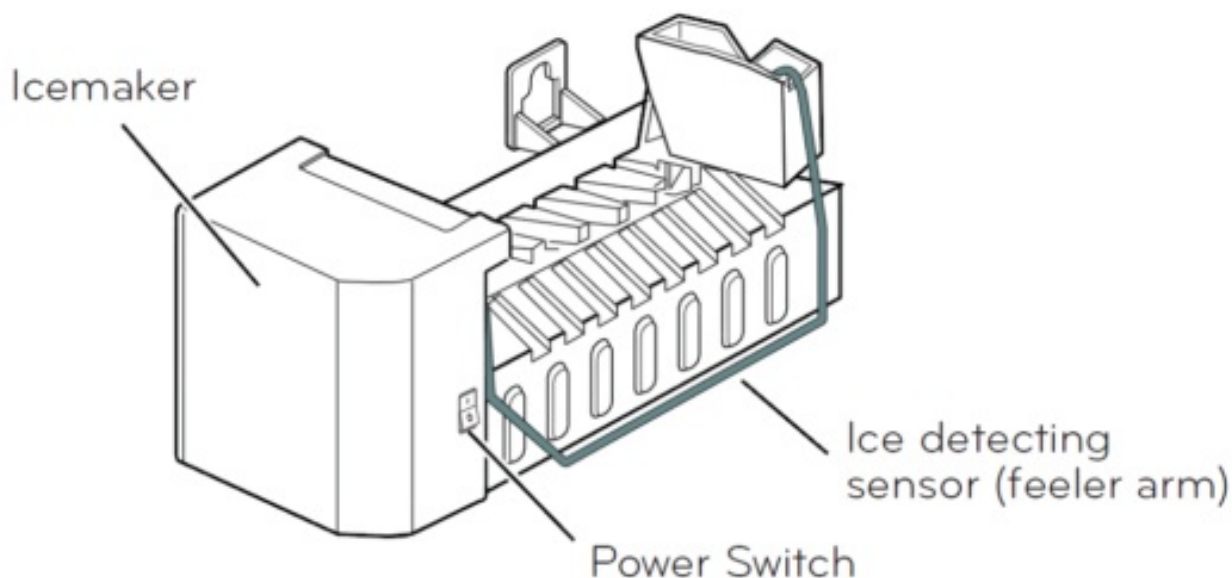
- **IMPORTANT:** Save these instructions for local servicer's use.
- **IMPORTANT:** Observe all governing codes and ordinances.
- **Note to Installer:** Be sure to leave these instructions with the consumer.
- **Note to Consumer:** Keep these instructions for future reference.
- **Skill level:** Installation of this appliance requires basic mechanical and electrical skills.
- Completion time: 20~60 minutes
- Proper installation is the responsibility of the installer.
- Product failure due to improper installation is not covered under the warranty.

## INTRODUCTION TO THE AUTOMATIC ICEMAKER

### WARNING

#### Personal Injury Hazard

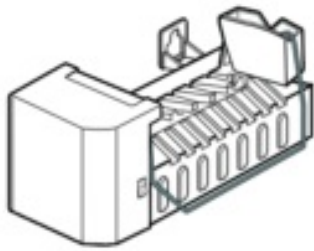
Avoid contact with the moving parts. DO NOT place fingers or hands on the automatic icemaking mechanism while the refrigerator is plugged in. A newly installed refrigerator may take 12 to 24 hours to begin making ice.



The icemaker will produce 8 cubes per cycle, approximately 64-128 cubes in a 24 hour period, depending on freezer compartment temperature, room temperature, how frequently refrigerator doors are opened, and other use conditions. If you wish to operate the refrigerator without connecting a water supply, set the icemaker switch to O (off). When the refrigerator has been connected to the water supply, set the switch to I (on). The icemaker will fill with water when it reaches the proper temperature. A newly installed refrigerator may take 12 to 24 hours to begin making ice cubes. Discard the first few batches of ice to allow the water line to clear. Be sure nothing interferes with the movement of the feeler arm. When the bin fills to the level of the feeler arm, the icemaker will stop producing ice. If ice is not used frequently, old ice cubes will become cloudy, taste stale and shrink.

## CONTENTS OF KIT

1



Ice maker

2



Screw 5EA

3



Ice maker Owner's Manual

4



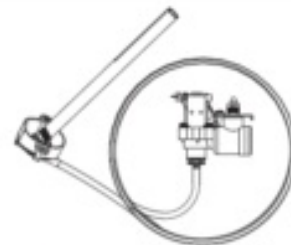
Ice maker Screw 2 EA  
(0.55 in WHITE)

5



Band 3EA

6



Water Valve Assembly

7

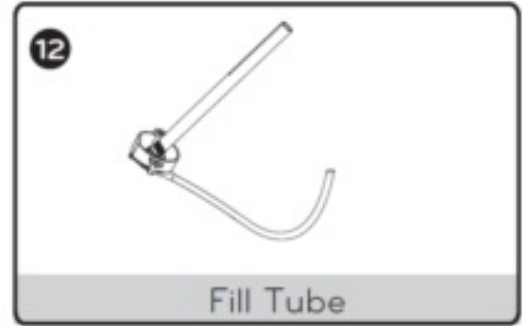
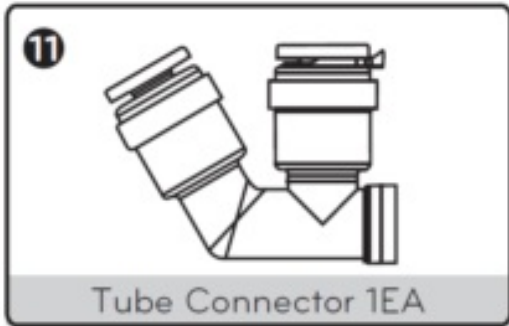
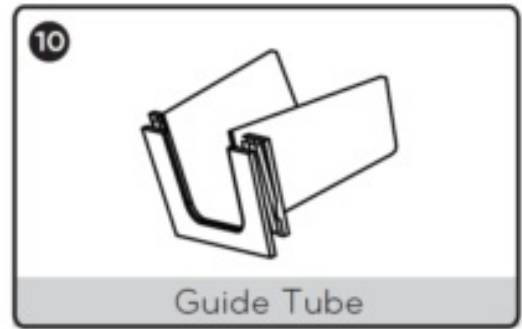
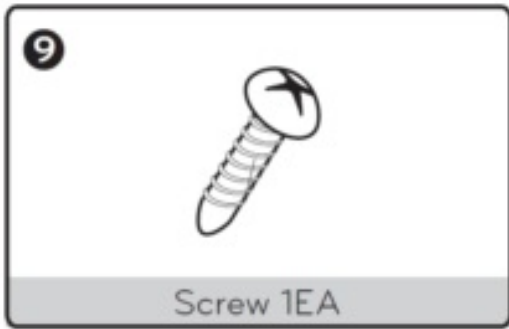


Valve Screw 1 EA

8



Ice Bucket



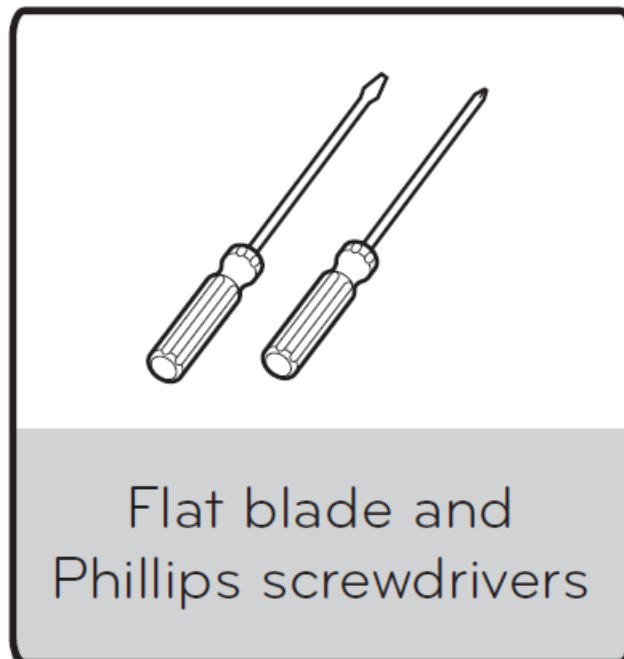
## ICEMAKER INSTALLATION

### BEFORE YOU BEGIN

Read each step thoroughly before proceeding.

**CAUTION:** Unplug the refrigerator power cord from the outlet.

### TOOLS YOU WILL NEED



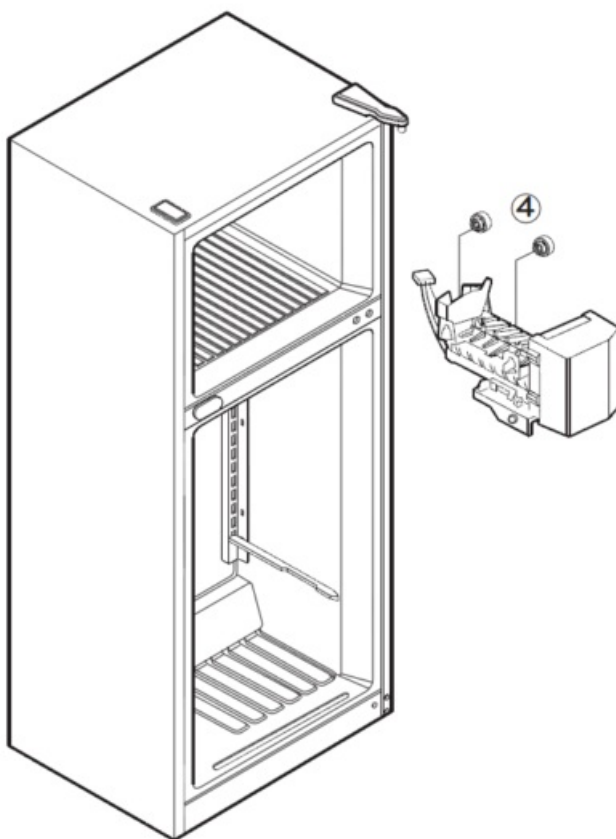
## INSTALLATION INSTRUCTIONS

### TURN OFF THE ICEMAKER

Turn the icemaker switch to O (off). Leave the icemaker off until the refrigerator is connected to the water supply to prevent premature operation.

## INSTALL THE ICEMAKER

Before installing icemaker, remove the freezer shelf. To mount the icemaker, insert the two icemaker screws provided through the holes at the base of the icemaker and into the slots located in the freezer left wall.



## PLUG IN THE ICEMAKER

First remove connector cover, press like arrow indicate in order to connect the icemaker into the freezer. (Figure 1)

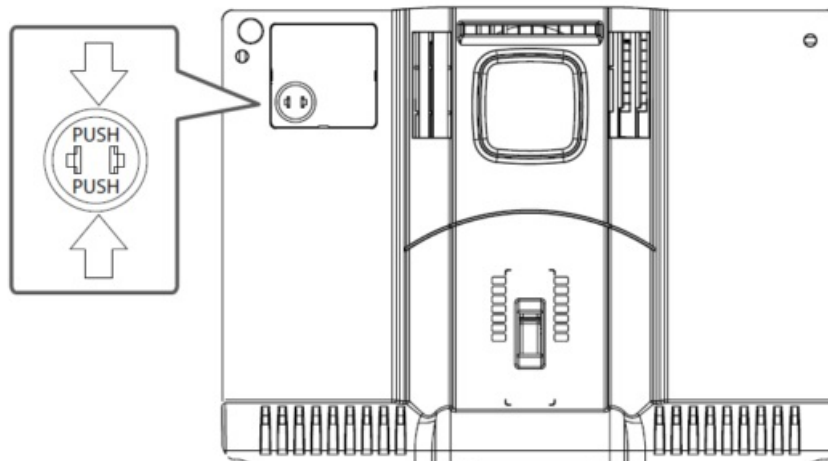


Figure 1

Plug the icemaker wire harness into the connector (that is visible when the cover is removed) located in the freezer wall until you hear a click sound. (Figure 2)

**NOTE:** Secure the icemaker to the freezer using 1 screw .9



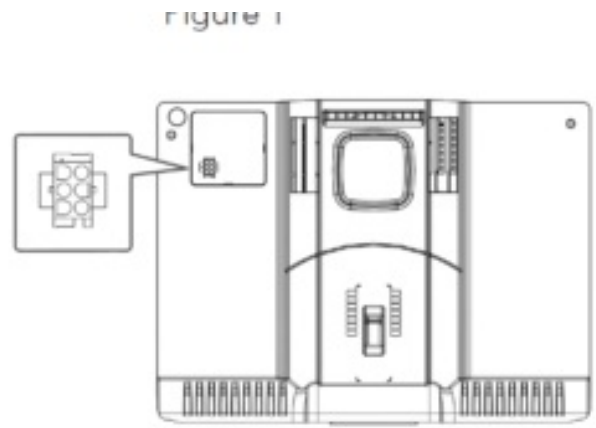
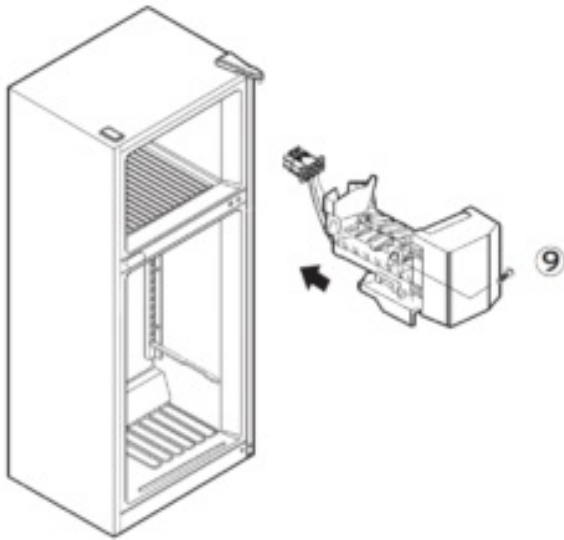


Figure 2

Plug the icemaker wire harness into the connector located in the freezer wall until you hear a click sound.

**NOTE:** Secure the icemaker to the freezer using 1 screw .9

### INSTALL THE ICE BUCKET

Before installing the ice bucket, install the freezer shelf. Put the ice bucket directly under the icemaker (to the left and all the way to the rear of the shelf under the icemaker). Make sure that the icemaker switch is set to O (off) position.



**KEEP THIS MANUAL**

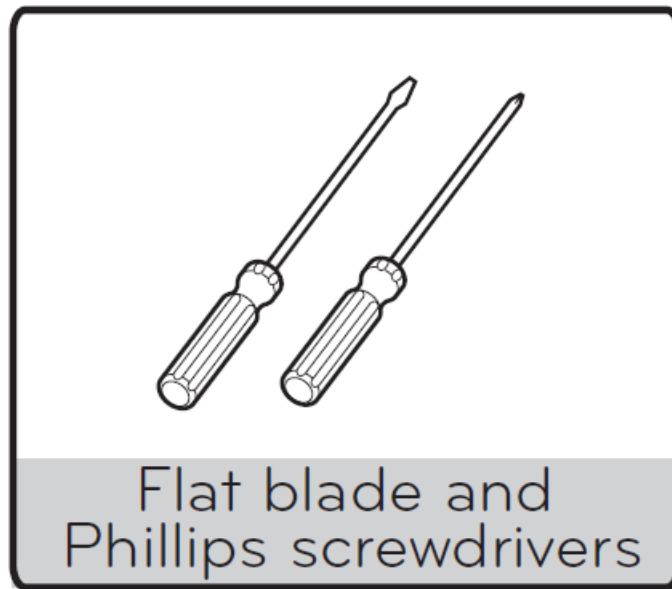
## WATER VALVE INSTALLATION

### BEFORE YOU BEGIN

Read each step thoroughly before proceeding.

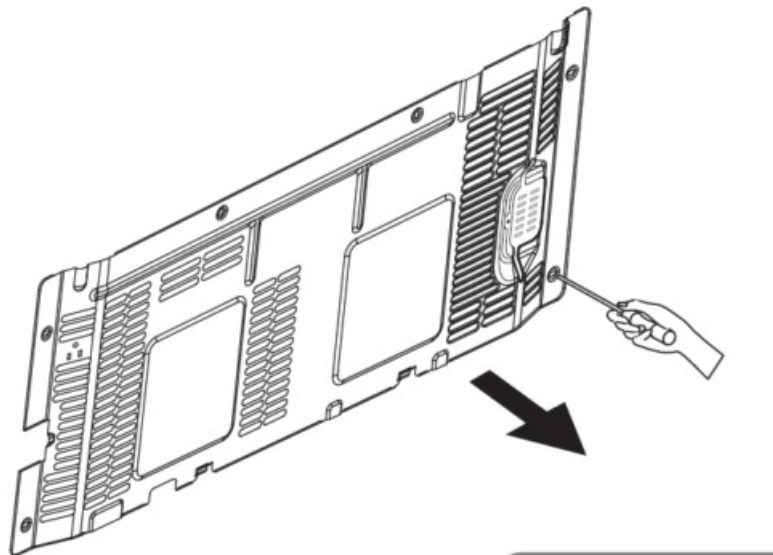
**CAUTION:** Unplug the refrigerator power cord from the outlet.

### TOOLS YOU WILL NEED



## INSTALLATION INSTRUCTIONS

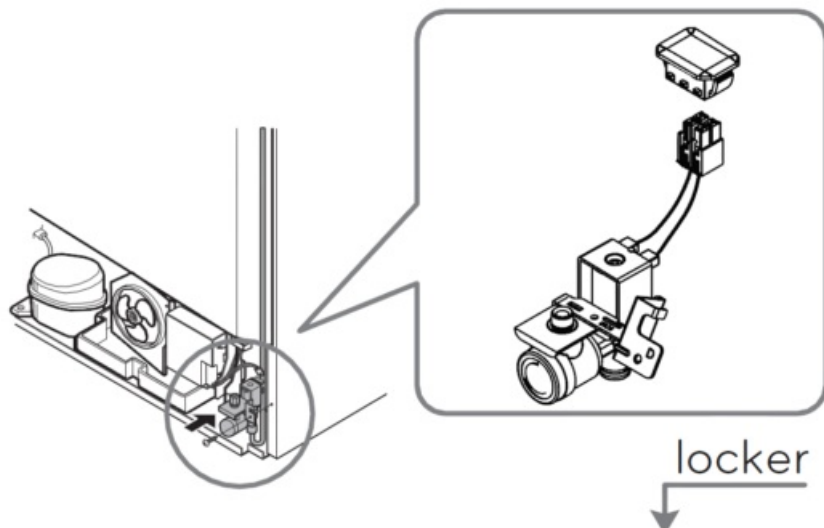
(Only for models; LTCS20120\*, LTCS20020\* and LTCS20040\*)



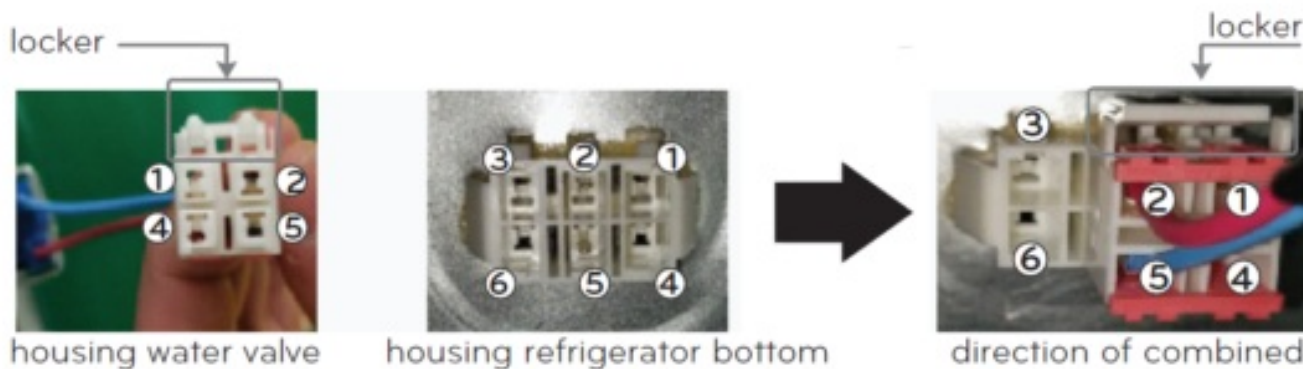
## REMOVE THE BACK COVER

Remove the back cover of the refrigerator using a Phillips screwdriver.

## CONNECT THE WATER VALVE WIRE HARNESS

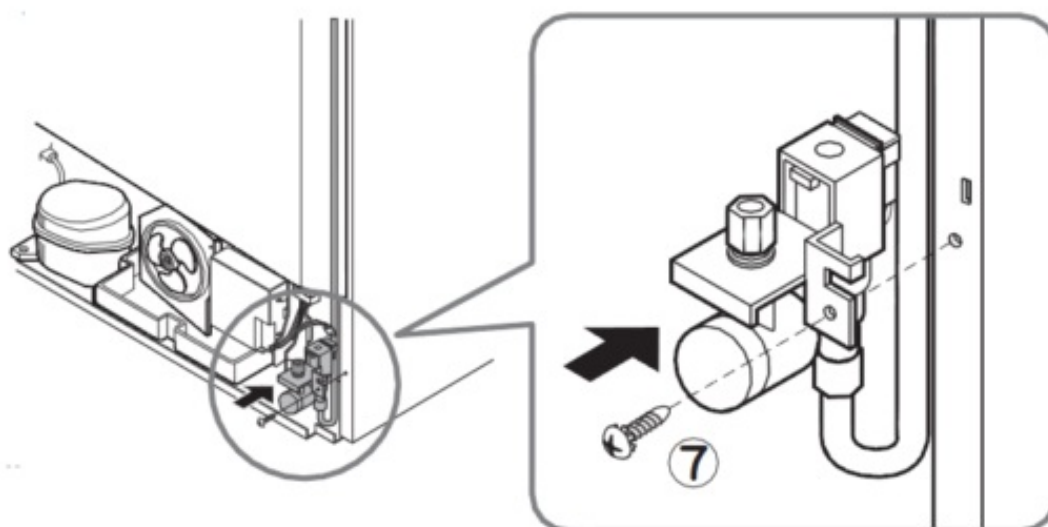


Facing the back of the refrigerator, locate the wiring harness for the water valve at the lower right side. Plug the connector of the water valve harness onto the refrigerator terminals.



### ATTACH THE WATER VALVE

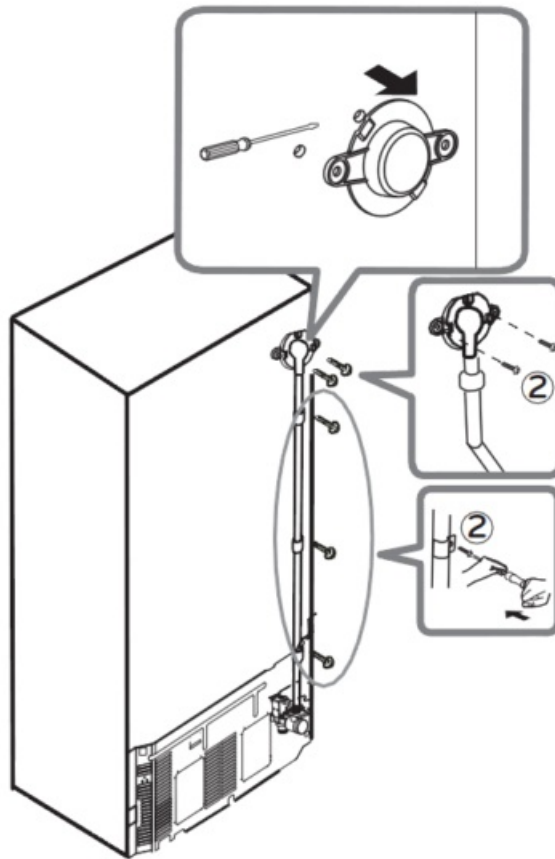
Fasten the water valve to the back of the refrigerator using one Phillips screw .7



**NOTE:** Make sure the fill tube connection on water valve is secure.

### REMOVE THE ICEMAKER FILL TUBE COVER

Remove and discard the icemaker fill tube opening cover located on the upper right side of the refrigerator; insert the icemaker fill tube all the way into the opening until it stops.

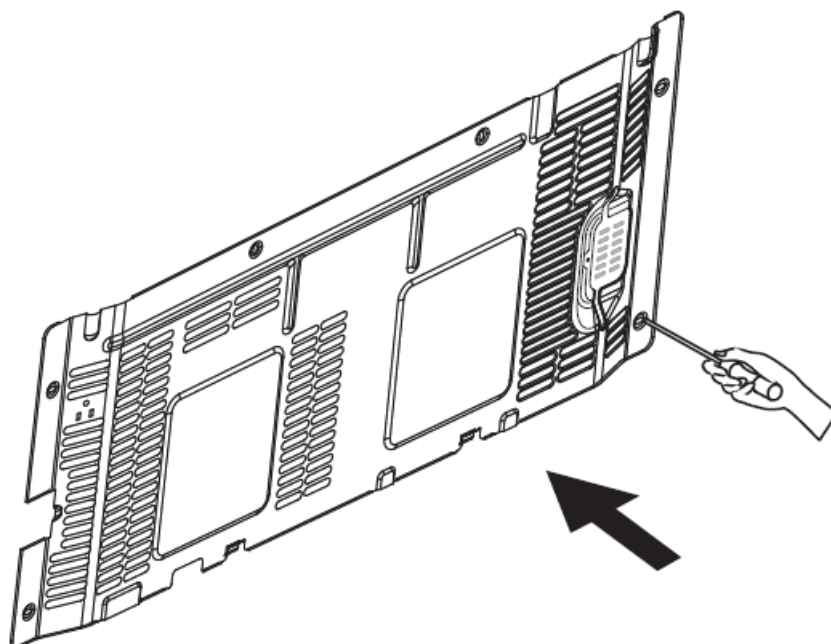


### SECURE THE FILL TUBE

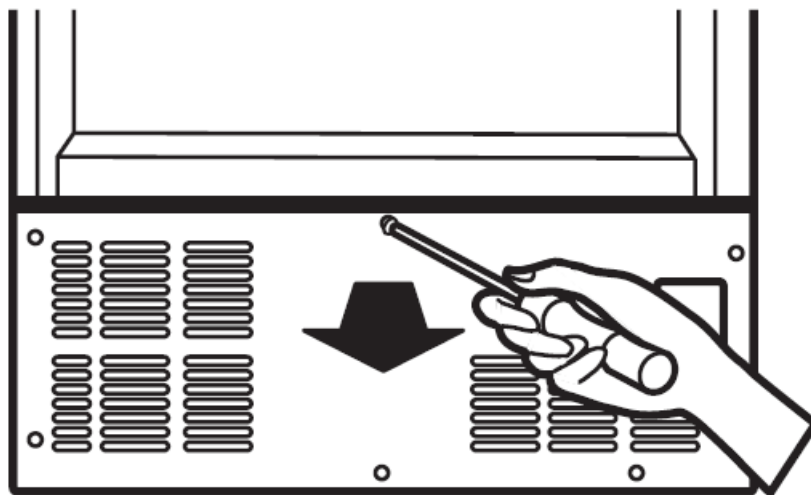
Locate the marks on the back of the cabinet where the fill tube 6 will be installed. Place the 25 screws on the marks and tap them with the screwdriver to make a small hole. Fasten the fill tube using the band and the Phillips5 screws.

### ATTACH THE BACK COVER

Fasten the back cover with the previously removed screws.



### CONNECT TO WATER LINE



To connect to the home water supply, refer to the Water Line Installation Instructions within the refrigerator's Owner's Manual. Once the home water supply line is connected and turned on, be sure to turn the icemaker switch to the I (on) position. The icemaker will require 12 to 24 hours for ice to be produced. It is recommended to discard the first few batches of ice prior to using a batch for consumption.

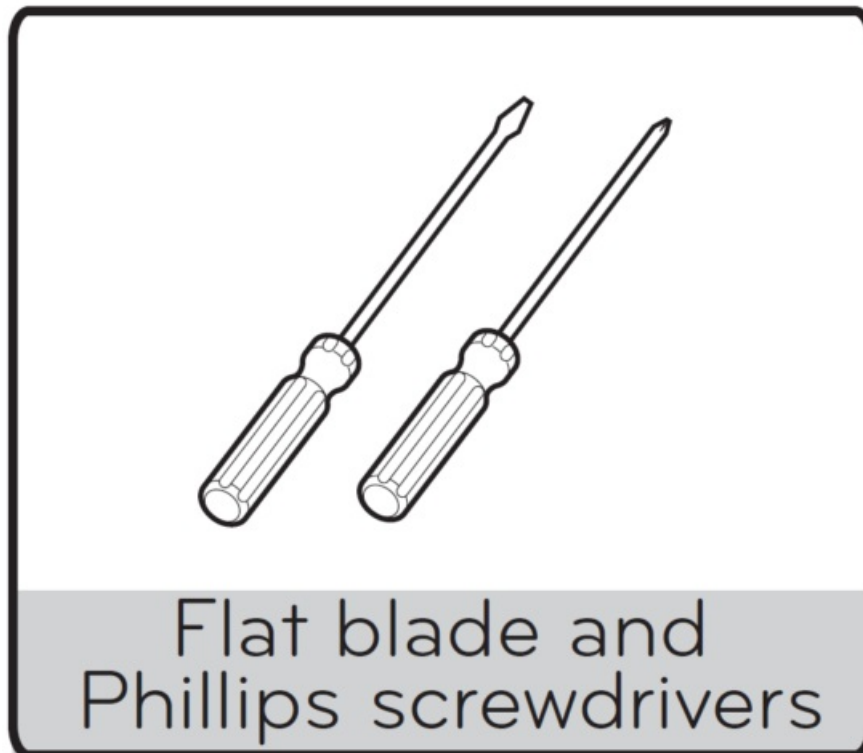
## FILL TUBE INSTALLATION

### BEFORE YOU BEGIN

Read each step thoroughly before proceeding.

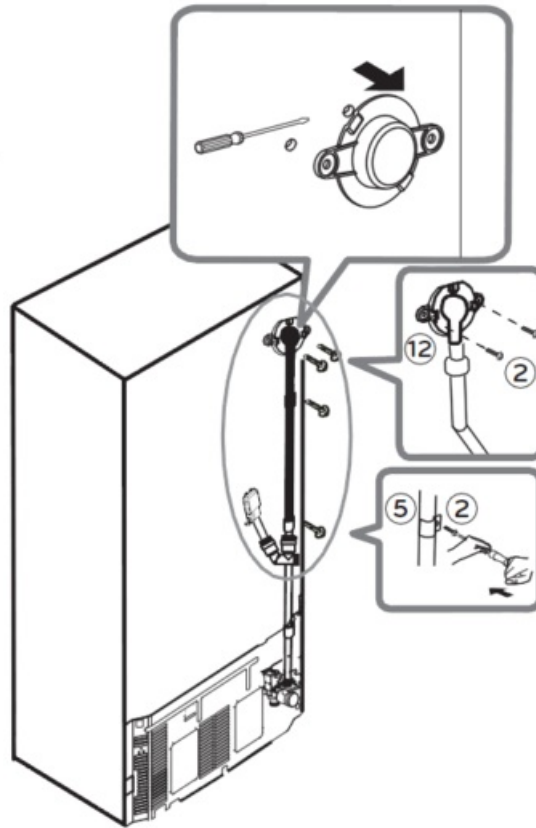
**CAUTION:** Unplug the refrigerator power cord from the outlet.

### TOOLS YOU WILL NEED



## INSTALLATION INSTRUCTIONS

(Apply only for model; LRTLS2403\*)



#### **REMOVE THE ICEMAKER FILL TUBE COVER**

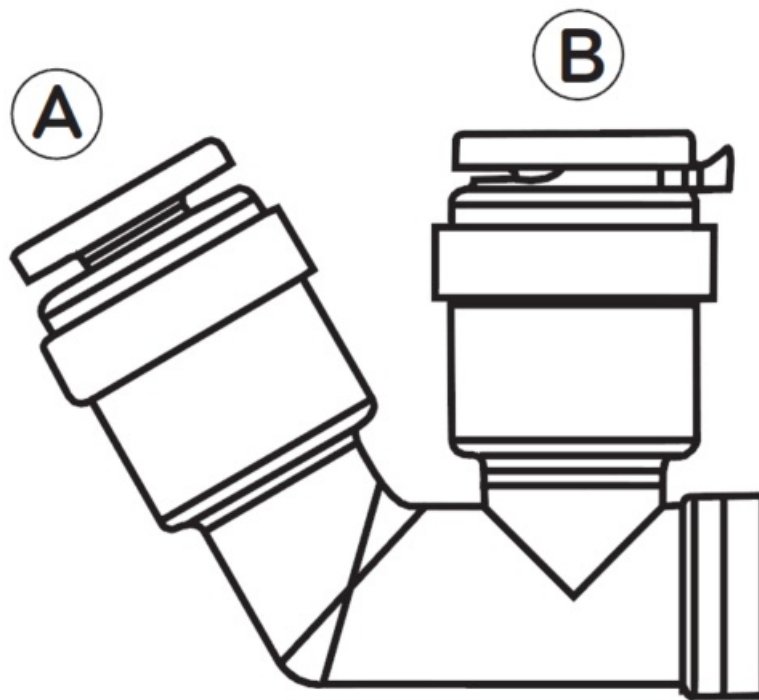
Remove and discard the icemaker fill tube opening cover located on the upper right side of the refrigerator; insert the icemaker fill tube all the way into the opening until it stops.

#### **SECURE THE FILL TUBE**

Locate the marks on the back of the cabinet 12 where the fill tube will be installed. Place the 25 screws on the marks and tap them with the screwdriver to make a small hole. Fasten the fill tube using the band and the Phillips screws.

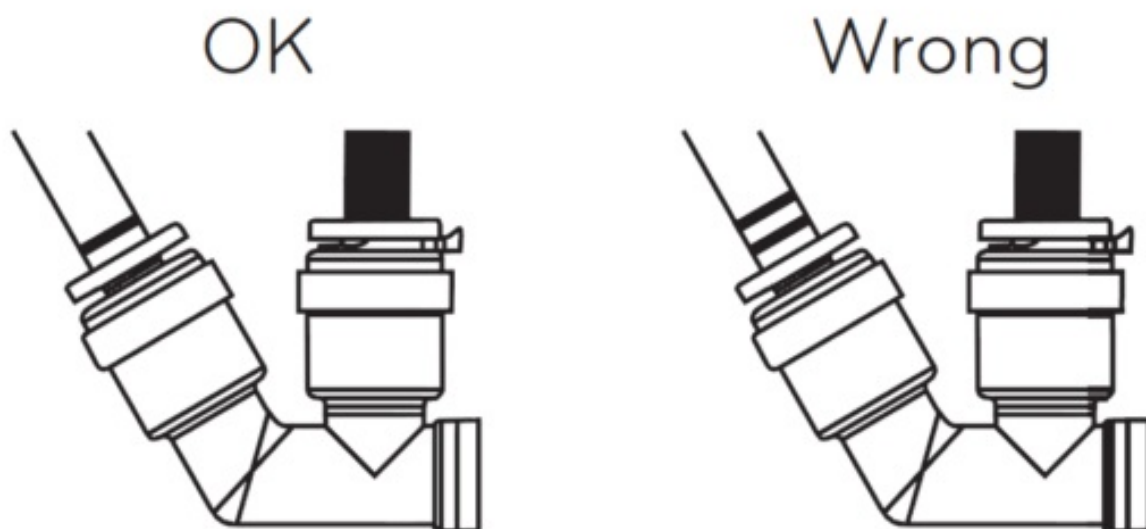
#### **SECURE THE FILL TUBE**

Position the tube connector as shown. Insert the tube from the water valve (white) in the left opening. Then remove the clip from around the right opening, insert the icemaker fill tube (black), and reinsert to secure the tube.



## FILL TUBE INSTALLATION

Insert tubes until only one guideline is showing. Tug gently to make sure the tube is secure.



## CARE

### WHEN SHOULD YOU SET THE ICEMAKER SWITCH TO O (OFF)

- When the ice storage bin is removed for more than a few minutes.
- When the water supply will be shut off for several hours.
- When the refrigerator will not be used for several days.

### NORMAL SOUNDS YOU MAY HEAR

- During use, you may hear an occasional “buzzing” noise coming from the back of your refrigerator. This is

normal and occurs when the water valve is turned on to allow water to fill the ice tray. If the refrigerator is not connected to a water supply, this noise will still occur and damage can result from operating the icemaker without having a water supply line installed. To avoid unnecessary operating noises, and avoid damaging the icemaker, locate the icemaker switch and place it in the O (off) position.

- You may occasionally hear the sound of ice dropping into the ice bin, and running water during use as the icemaker refills.

## WHEN YOU GO ON VACATION

Set the icemaker switch to the O (off) position, and shut off the water supply line to the refrigerator. If you anticipate that the temperature surrounding the refrigerator may drop below freezing, have a qualified plumber drain the water supply system to prevent property damage due to flooding from ruptured water lines or connections.

## TROUBLESHOOTING GUIDE

### AUTOMATIC ICEMAKER DOES NOT WORK

Check if... Then...

Icemaker switch in the <b>O</b> (off) position.	Move the switch to the <b>I</b> (on) position.
Water supply turned off or not connected.	See Connecting the Water Line.
Freezer compartment too warm.	After installing icemaker, wait 24 hours for freezer to reach its set temperature.  Recommended freezer temperature is 0 degrees F (-18°C).
Piled up cubes in the storage bin causes the icemaker to shut off.	Level cubes by hand.

### CUBES PRODUCED BY ICEMAKER ARE TOO SMALL

Check if... Then...

Water shutoff valve is not fully open or the water supply pressure is not adequate.	Check water supply for proper pressure. Recommended pressure is 20 -120 psi (138 – 827 kPa).
---	---

### ICE CUBES ARE FREEZING TOO SLOWLY

Check if... Then...



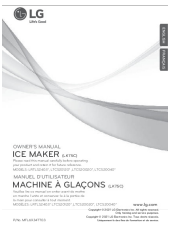


The doors have been left open.	Check to ensure doors are closed properly.
Temperature control not set cold enough.	Refer to refrigerator's Owner's Manual to the Control Panel Features for temperature adjustments.

## ICE CUBES HAVE A BAD TASTE OR ODOR

Check if... Then...

Ice storage bin needs cleaning.	Empty and thoroughly wash the ice bin.
Food transmitting odor/taste to ice cubes.	Cover or wrap food items to prevent the spread of odors.
Interior of refrigerator needs cleaning.	Refer to refrigerator's Owner's Manual. The Care and Cleaning section see General Cleaning Tips.

## Documents / Resources

	<a href="#">LG LK75C Ice Maker</a> [pdf] Owner's Manual LK75C Ice Maker, LK75C, Ice Maker
	<a href="#">LG LK75C Ice Maker</a> [pdf] Owner's Manual LK75C, Ice Maker, LK75C Ice Maker, Maker
	<a href="#">LG LK75C Ice Maker</a> [pdf] Owner's Manual LK75C Ice Maker, LK75C, Ice Maker

## References

- 
[LG Electronics & Home Appliances | Shop Now | LG USA](#)