

[Skip to content](#)

**Manuals+**

User Manuals Simplified.

# LG 75QND90SQA Smart LED Display User Guide

[Home](#) » [LG](#) » LG 75QND90SQA Smart LED Display User Guide



Contents [hide](#)

- [1 LG 75QND90SQA Smart LED Display](#)
- [2 WHAT'S INCLUDE](#)
- [3 UNBOXING](#)
- [4 INSTALLATION](#)
- [5 CONNECTIVITY](#)
- [6 BATTERY](#)
- [7 POWER](#)

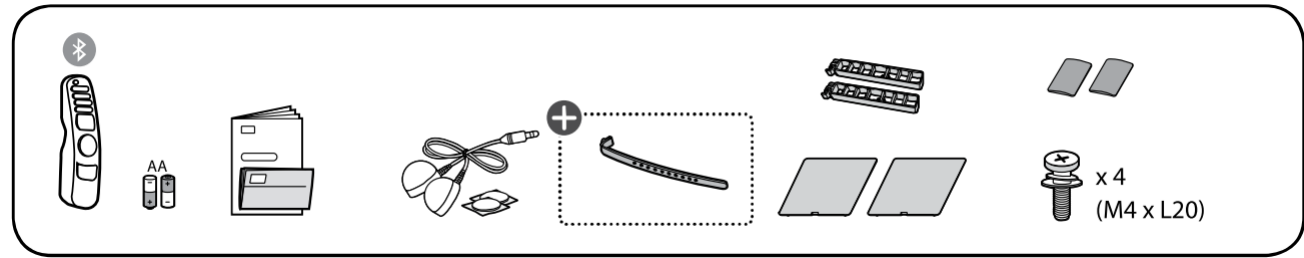
[8 DIMENSION](#)  
[9 Documents / Resources](#)  
[10 Related Posts](#)



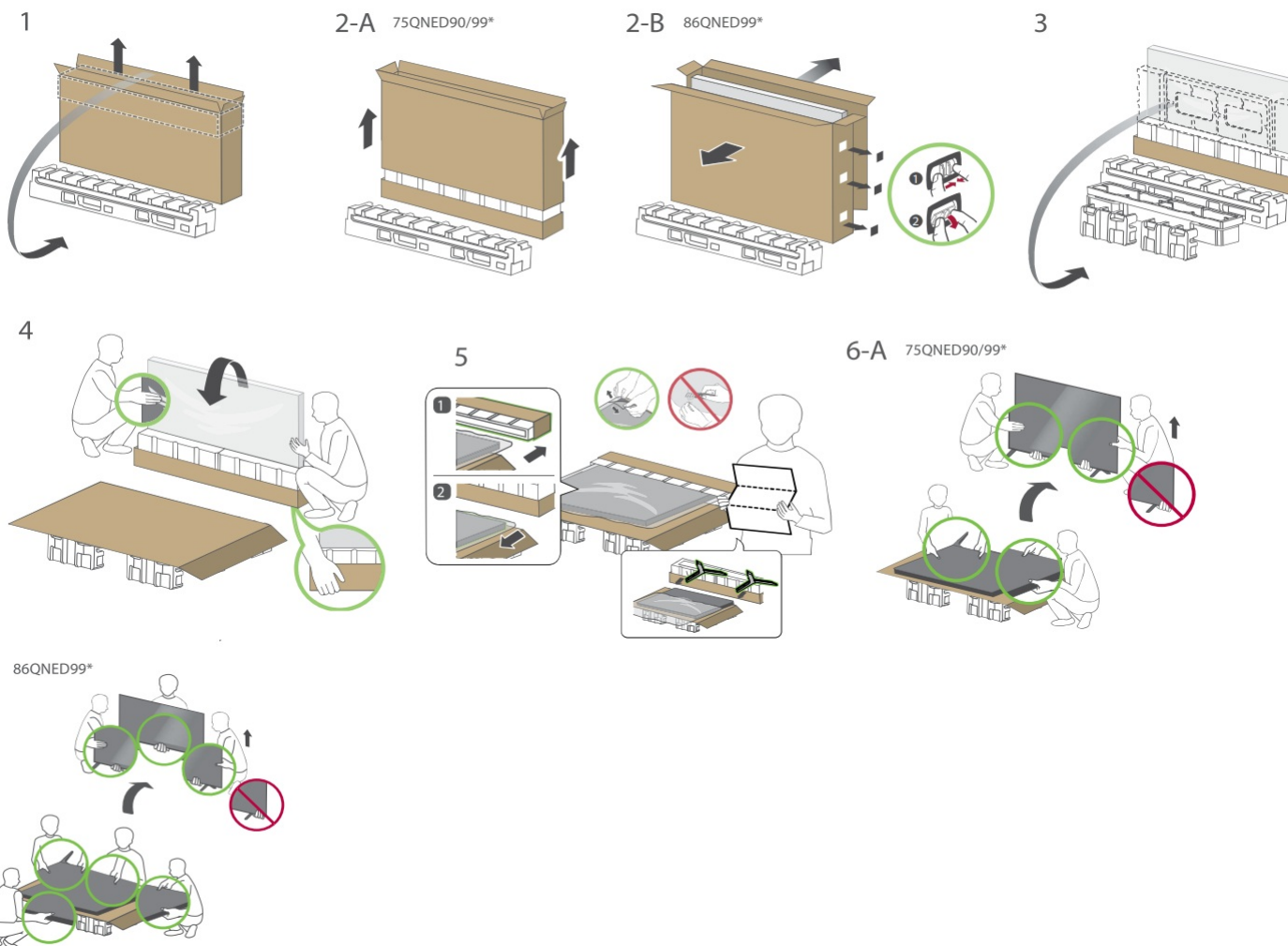
LG 75QND90SQA Smart LED Display



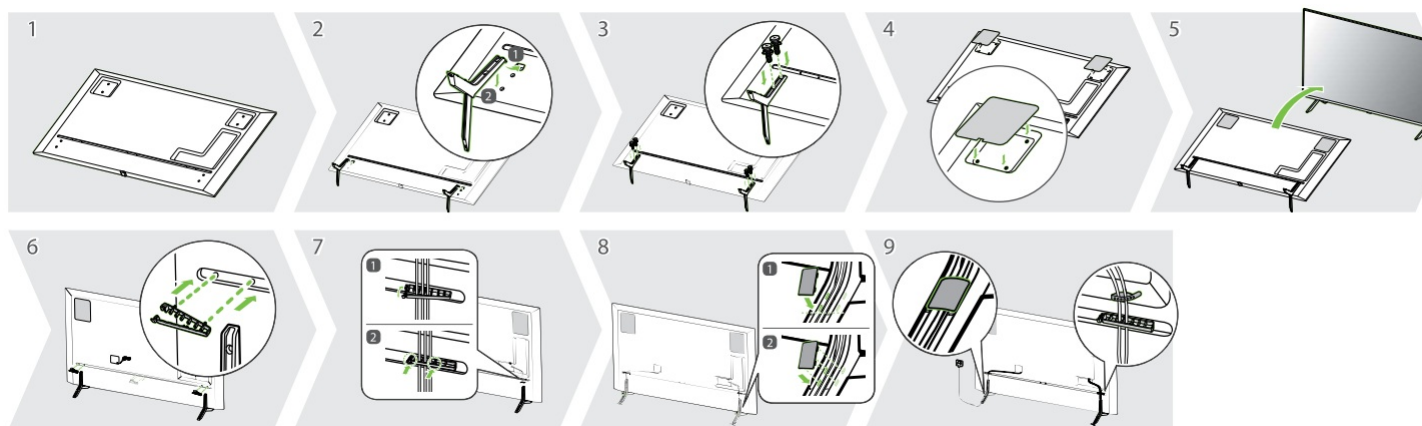
## WHAT'S INCLUDE



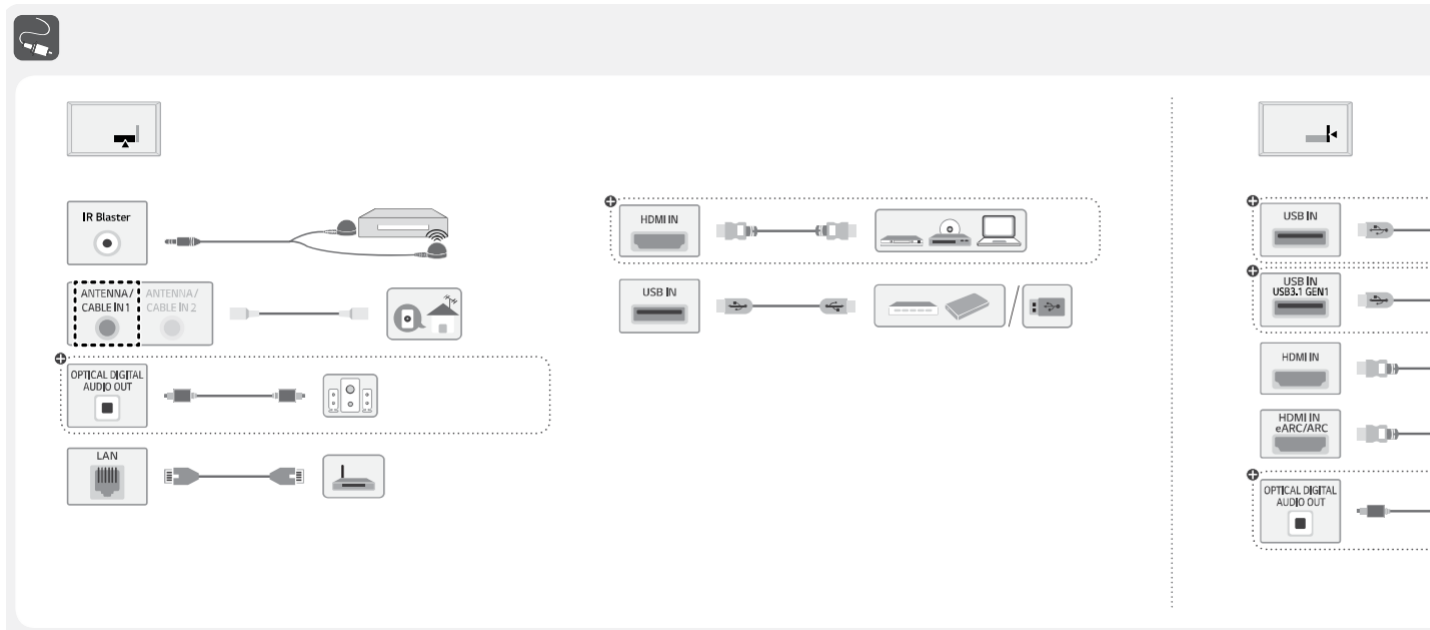
## UNBOXING



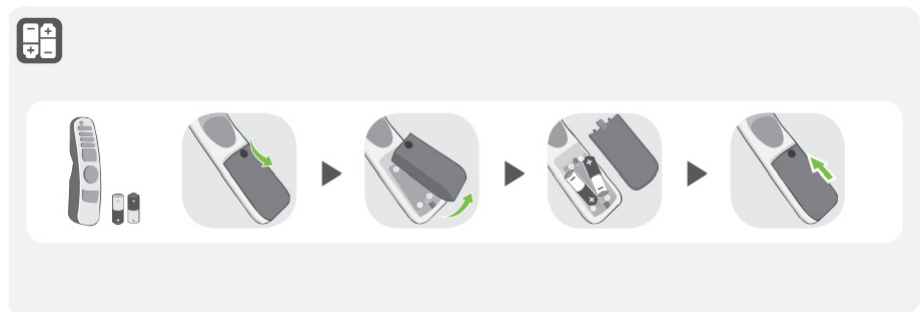
## INSTALLATION



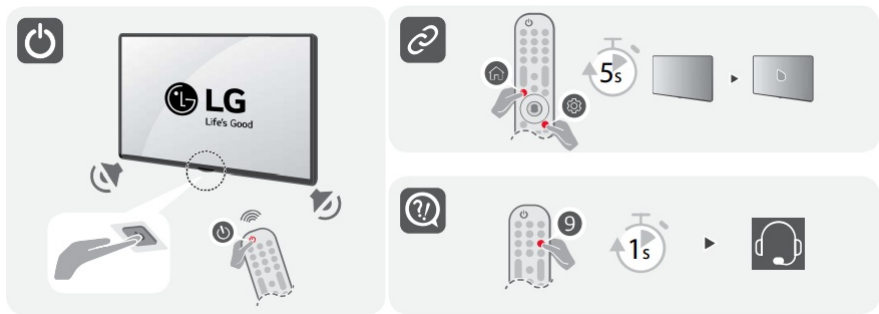
## CONNECTIVITY



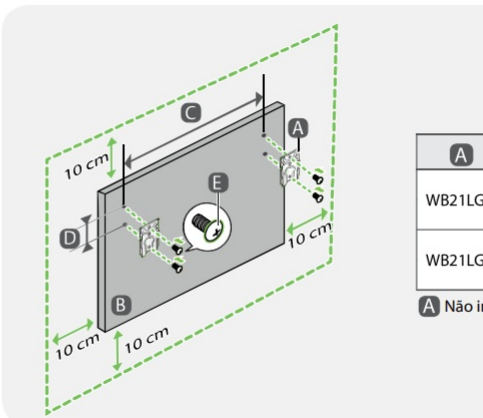
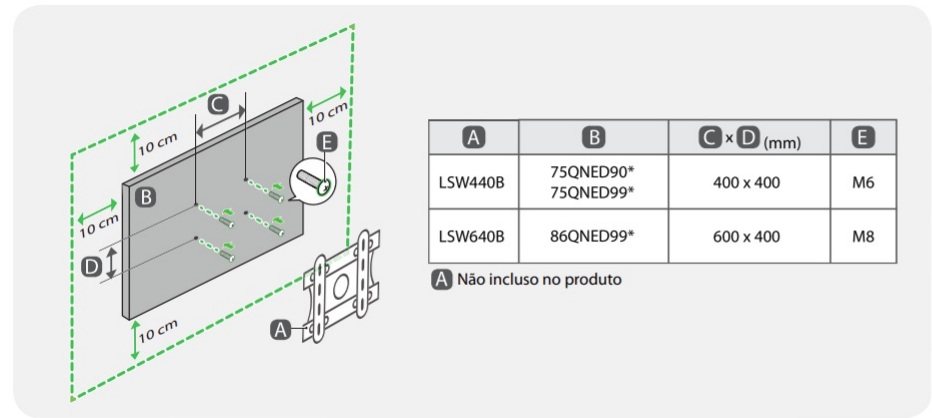
### BATTERY

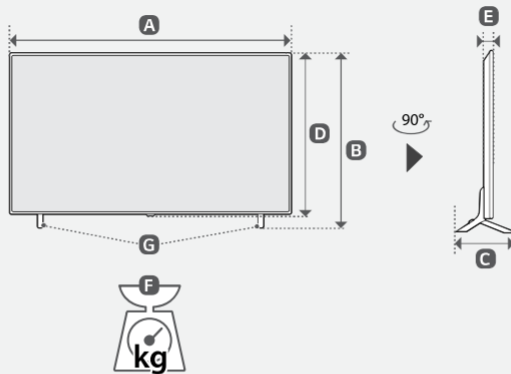


### POWER



### DIMENSION





MODELOS	A		B		C		D		E		F		F - G		Consumo
	(mm)										(kg)				
75QNED90SQA	1.665	1.665	1.022	1.022	359	359	958	958	29,5	29,5	37,0	37,0	36,0	36,0	340 W
75QNED99SQA	1.665	1.665	1.022	1.022	359	359	958	958	29,5	29,5	39,0	39,0	38,0	38,0	440 W
86QNED99SQA	1.917	1.917	1.162	1.162	359	359	1.098	1.098	29,9	29,9	55,9	55,9	54,9	54,9	660 W
Alimentação										AC 100-240 V~ 50/60 Hz					

[www.lg.com](http://www.lg.com)

#### Documents / Resources



[LG 75QNED90SQA Smart LED Display](#) [pdf] User Guide  
75QNED90SQA Smart LED Display, 75QNED90SQA, Smart LED Display, LED Display, Display

#### Manuals+.

- [home](#)
- [privacy](#)