



LG 35BN77C LED LCD Monitor User Guide

[Home](#) » [LG](#) » LG 35BN77C LED LCD Monitor User Guide 

Contents

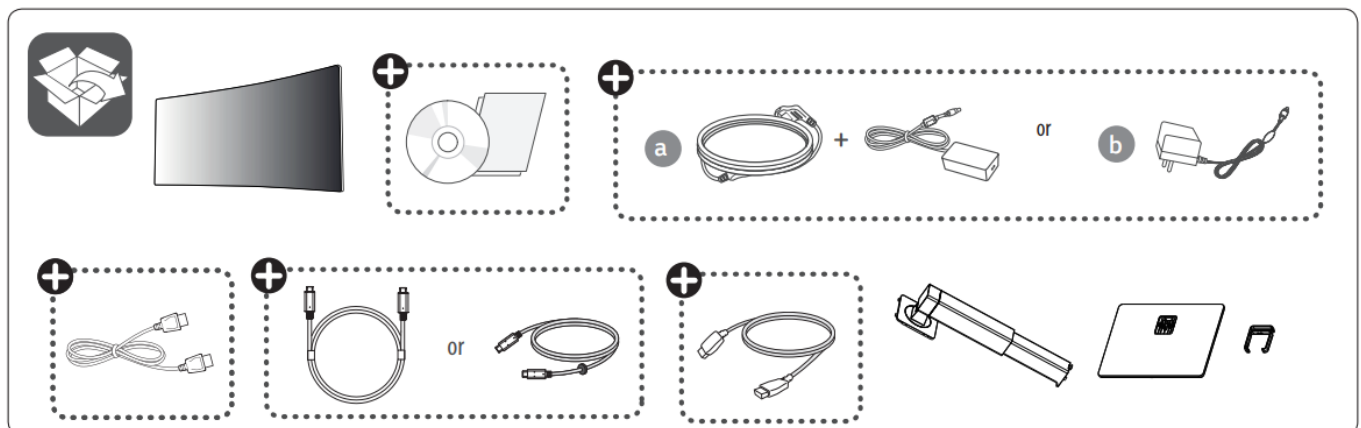
- 1 LG 35BN77C LED LCD Monitor
- 2 WHAT'S IN THE BOX
- 3 INSTALLTION
- 4 Connection
- 5 POWER
- 6 Documents / Resources
 - 6.1 References
- 7 Related Posts



LG 35BN77C LED LCD Monitor



WHAT'S IN THE BOX



Precautions

- Take a 10-minute break after 30 minutes of use.
- Children under the age of 2 should not watch the screen, and children over the age of 2 should not watch the screen for more than 1 hour a day.

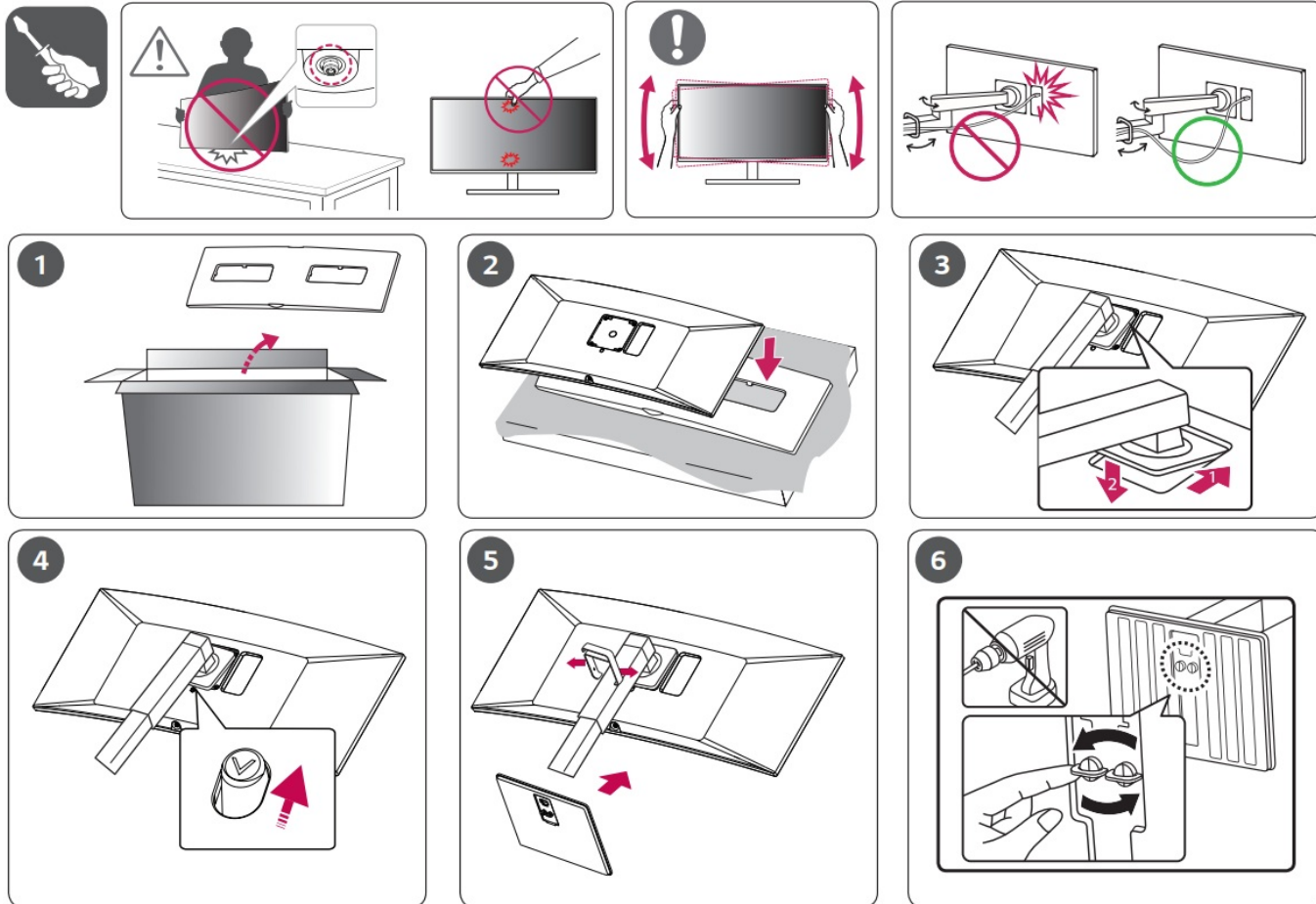
warn

- Excessive use may damage eyesight.

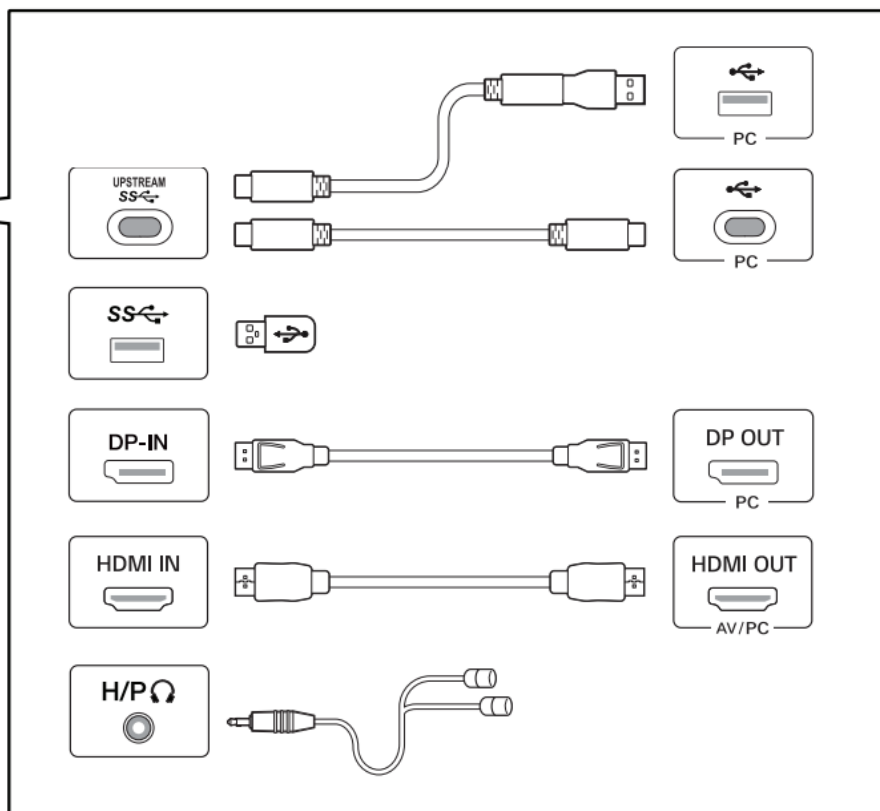
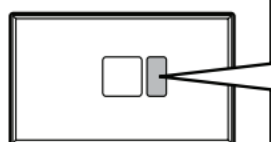
Depending on country

- It is recommended that use the supplied components
- You can download manuals from the LGE website

INSTALLTION

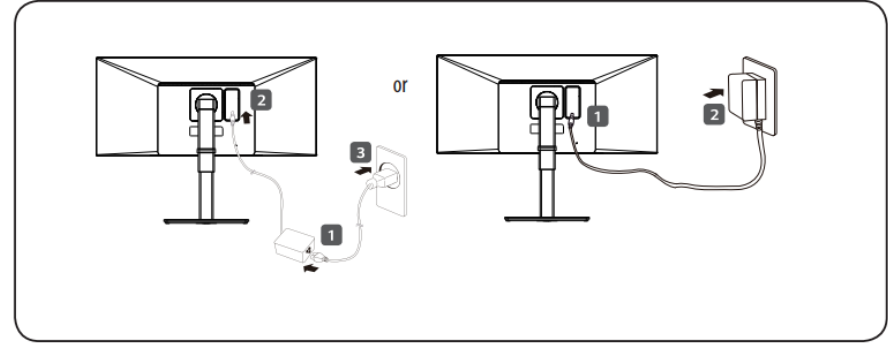


Connection

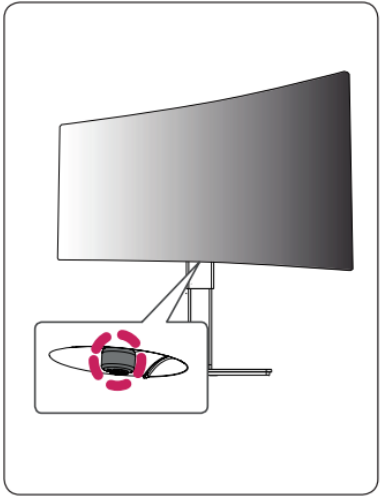


- Using a DVI to HDMI / DP (DisplayPort) to HDMI cable may cause compatibility issues.

POWER




TAIWAN ONLY



- www.lg.com

Documents / Resources

	LG 35BN77C LED LCD Monitor [pdf] User Guide 35BN77C LED LCD Monitor, 35BN77C, LED LCD Monitor, LCD Monitor, Monitor
---	--

References

-  [LG Electronics & Home Appliances | Shop Now | LG USA](#)